



**ENERGY SYSTEMS  
POWER GENERATION - GAS COMPRESSION**



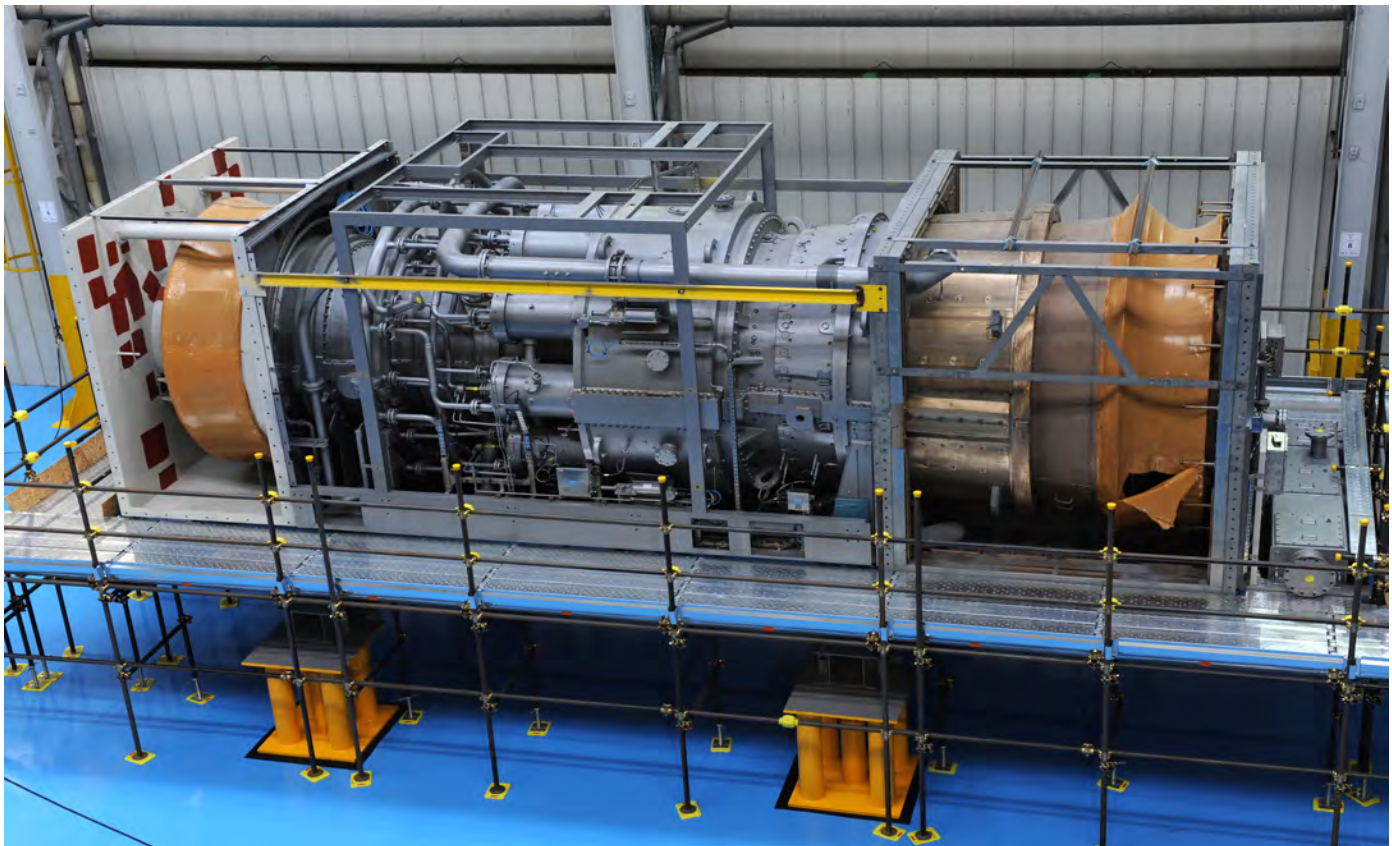
**Waukesha Pearce Industries**

## **STEAM & GAS TURBINES**



## **STEAM & GAS TURBINES**

**GE Heavy-Duty (Frame 5 • 6B • 6FA • 7E/EA • 7FA)**



### **Typical assessment scope**

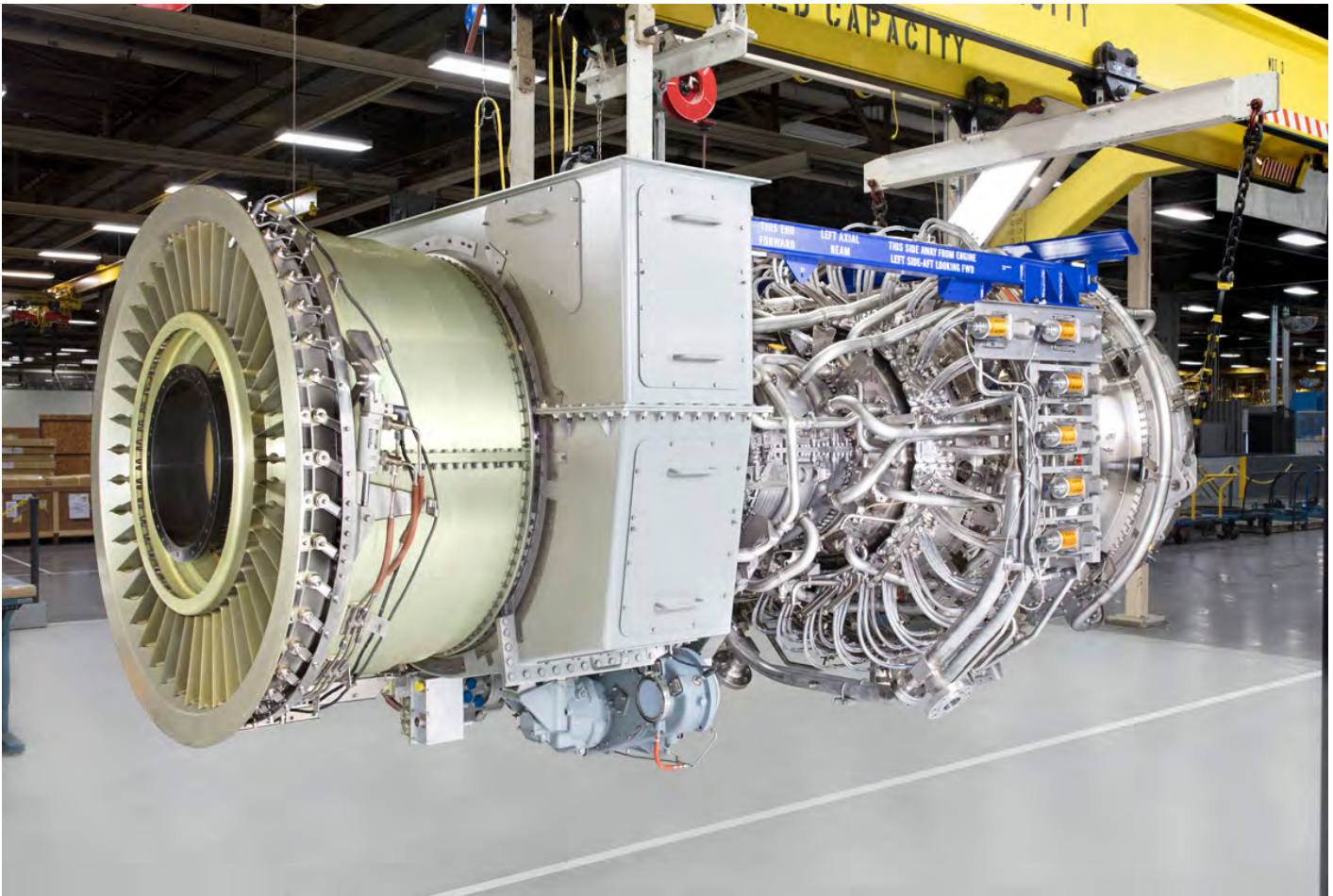
- Inlet: IGV condition, bellmouth, compressor fouling & erosion mapping.
- Combustion: liners, transition pieces, fuel nozzles, crossfire tubes; check for hotspots, cracking, wear lips.
- HGP: S1/S2 nozzles & buckets, shrouds, tip clearances, platform cracks, oxidation/slugging; diffuser & exhaust struts.
- Auxiliaries: lube oil coolers/filters, hydraulic actuators, atomizing air, purge air, inlet bleed heat.
- Deliverables: defect register (severity/codes), photo log, remaining-life opinion, outage plan with parts list.

### **Quick-ship parts focus**

- Buckets/nozzles (select frames), transition pieces, liners, seals & gaskets, pads/bolting, thermocouples/RTDs, LVDTs, flame detectors, igniters, inlet/oil/fuel filters, valve kits, actuators.

## STEAM & GAS TURBINES

GE Aeroderivative (LM2500 • LM6000)



### Typical assessment scope

- On-wing borescope: HPC/HPT blades/vanes, combustor liner, diffuser cases, sumps & seals.
- Accessory gearbox & mounts; fuel/nozzle condition; variable geometry checks.
- Field services: module swaps, hot-section change-outs, performance restores.

### Quick-ship parts focus

- Combustor hardware, liners & domes, fuel nozzles, igniters, O-rings & seal kits, sensors, filters.

# **STEAM & GAS TURBINES**

## **Pratt & Whitney (FT4)**



### **Typical assessment scope**

- Combustion & HPT borescope; diffuser/TBC condition; vane/bucket trailing-edge inspections.
- Lube/fuel/air systems checks; starter & control logic validation.

### **Quick-ship parts focus**

- Fuel nozzles & manifolds, igniters, liners, transitions, seals, sensors, filters.

## **STEAM & GAS TURBINES**

**Solar Turbines (Saturn • Centaur • Taurus)**



### **Typical assessment scope**

- Inlet/compressor condition, combustor can inspections, turbine wheels & nozzles.
- Enclosure/auxiliaries: ventilation, filtration, lube, controls.

### **Quick-ship parts focus**

- Combustion components, nozzle segments, wheel hardware, filters, sensors, gaskets & seals.

## **STEAM & GAS TURBINES**

**Westinghouse / Siemens-Westinghouse (W501D5)**



### **Typical assessment scope**

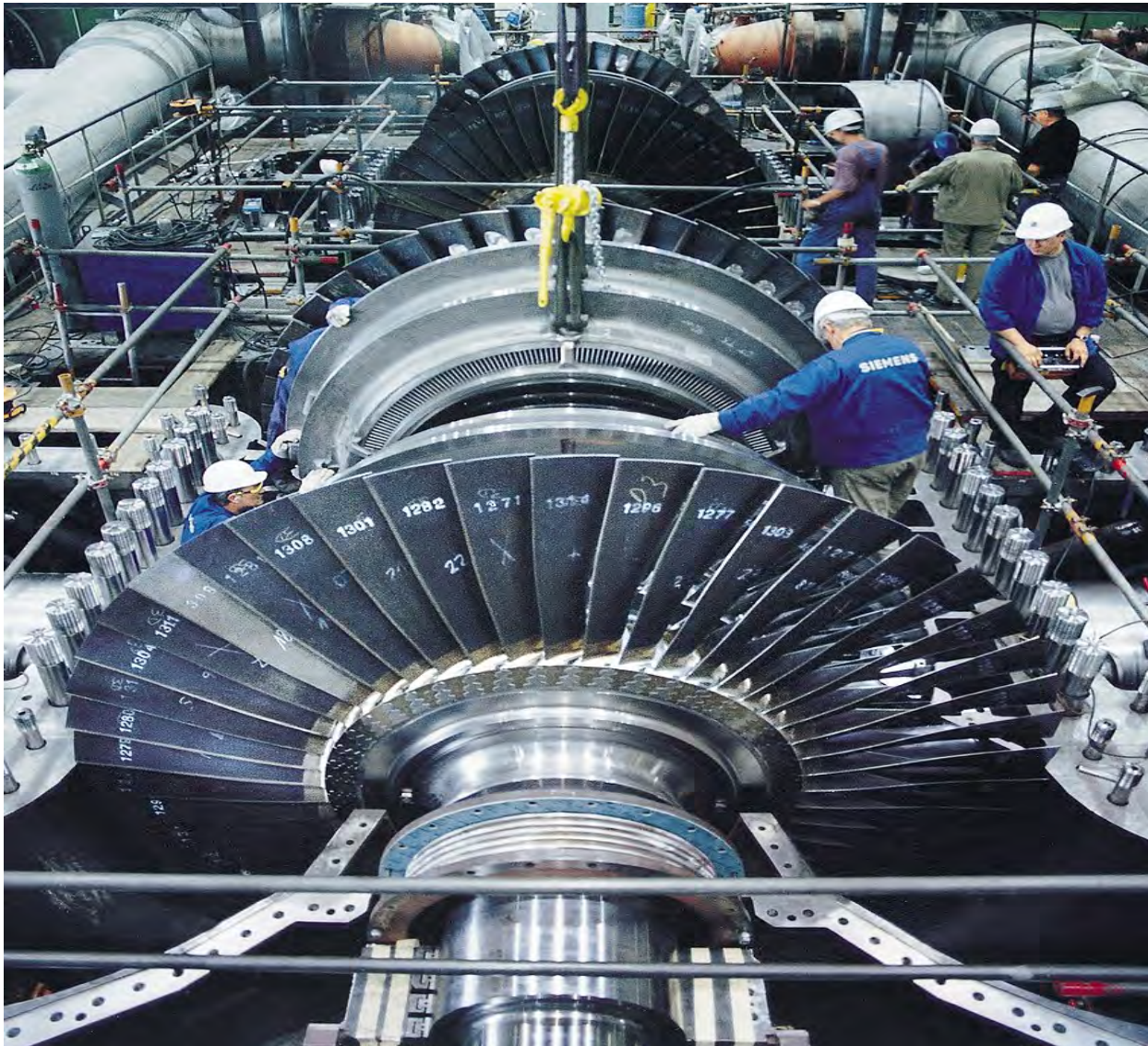
- Compressor mapping, combustor tiles/liners, transition pieces; first-stage nozzle/bucket inspection, platform cracks.
- Exhaust diffuser & shell; IGV & inlet system.

### **Quick-ship parts focus**

- Transition pieces, liners, seals, thermocouples, flame scanners, bolting kits, filters..

## **STEAM & GAS TURBINES**

### **Steam Turbines & Generators (multi-OEM)**



#### **Typical assessment scope**

- Valve inspections (stop/governor), casing & seal clearances, blade/diaphragm wear, rotor run-outs & alignment.
- Generator borescope, wedge tightness, PD testing coordination