

# Ford Landi CNG PCM Recalibration

## Outsource Process

1. Complete a Repair Assistance Form on the Landi Renzo USA Service website
2. Flash the PCM with the as-built data on gasoline using one of the following methods:
  - \* Providing the PCM to a Ford dealership for flashing OR
  - \* Using the Ford IDS tool by following Ford GSB 0000150. The engine serial number and transmission ID number will need to be inputted as part of the process.
3. After successfully flashing the PCM with the gasoline calibration, ship it to the address below for the CNG update. Shipping contents should include:
  - \* PCM with gasoline calibration
  - \* Shipping return label
  - \* Printout of the complete Repair Assistance Form received via email

Landi Renzo USA

Attention: Programming

23535 Telo Avenue

Torrance, CA 90505

4. Once the PCM is received by Landi Renzo, it will take approximately 2 business days to program the PCM.

\*Ford PCMs not be replaced under Ford warranty, there is a \$239 fee for PCM re-flashing.

# Ford Landi CNG PCM Recalibration

## In-House Process

1. Procure MyCANIC FD, Landi Part #1003144, from Landi Renzo (\$1,100),  
<https://www.landiusa.com/service/parts-purchase-request/>
2. Flash the PCM with the as-built data on gasoline using one of the following methods:
  - \* Providing the PCM to a Ford dealership for flashing OR
  - \* Using the Ford IDS tool by following Ford GSB 0000150. The engine serial number and transmission ID number will need to be inputted as part of the process.
3. After successfully flashing the PCM with the gasoline calibration, program with MyCANIC FD using the instructions that follow

# MyCanic - FD Flash Process

Procure MyCANIC FD, Landi Part #1003144, from Landi Renzo (\$1,100)  
<https://www.landiusa.com/service/parts-purchase-request/>



# Warning

Before proceeding please ensure battery is fully charge and sufficient charge throughout this process. If you are unsure connect a battery charger. Having a dead battery mid-process will cause damage to PCM.

DO NOT disconnect MyCanic – FD during flashing.

DO NOT turn key off during flashing.

Suggest to not to sit in vehicle during flashing process, this is to prevent any accidental disconnection of the OBD 2 connector and MyCanic – FD.

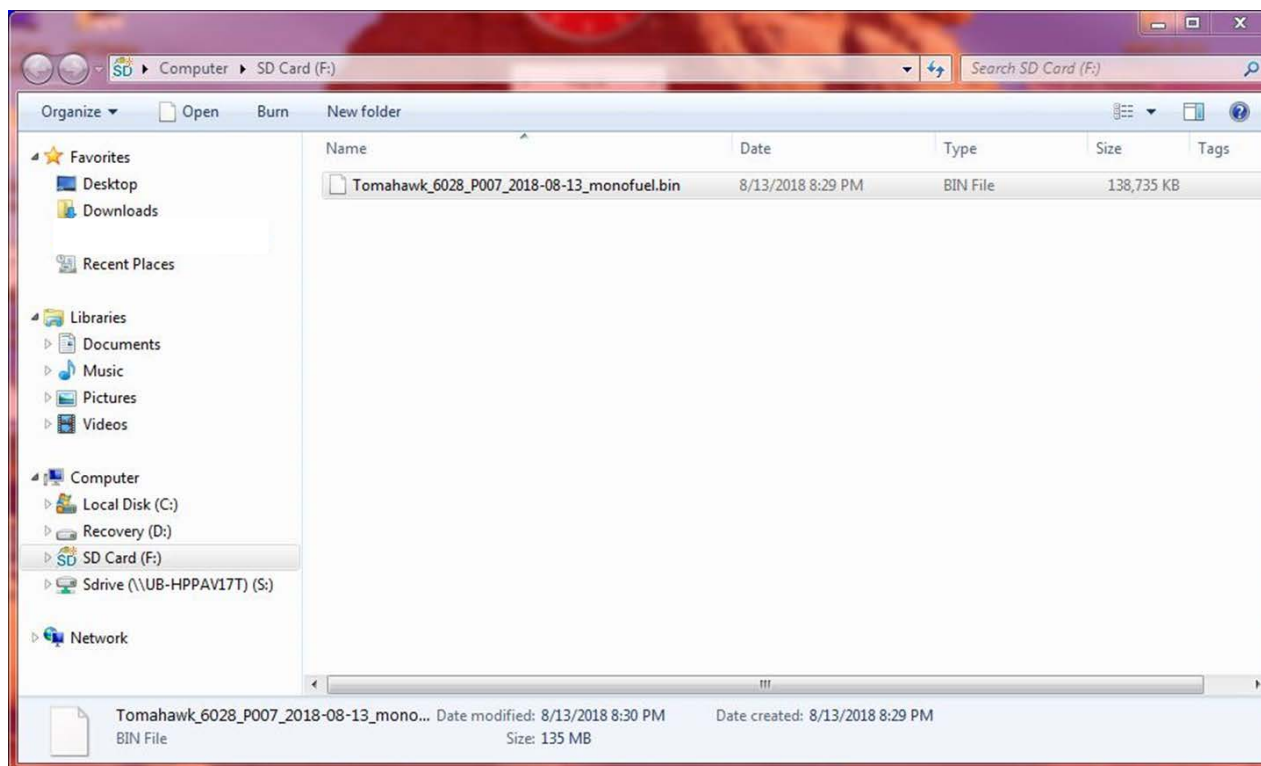
# Installing File to SD Card

1. Remove protective cap from MyCanic – FD.
2. Eject SD Card by pushing the SD card into the MyCanic – FD the SD card will pop out.



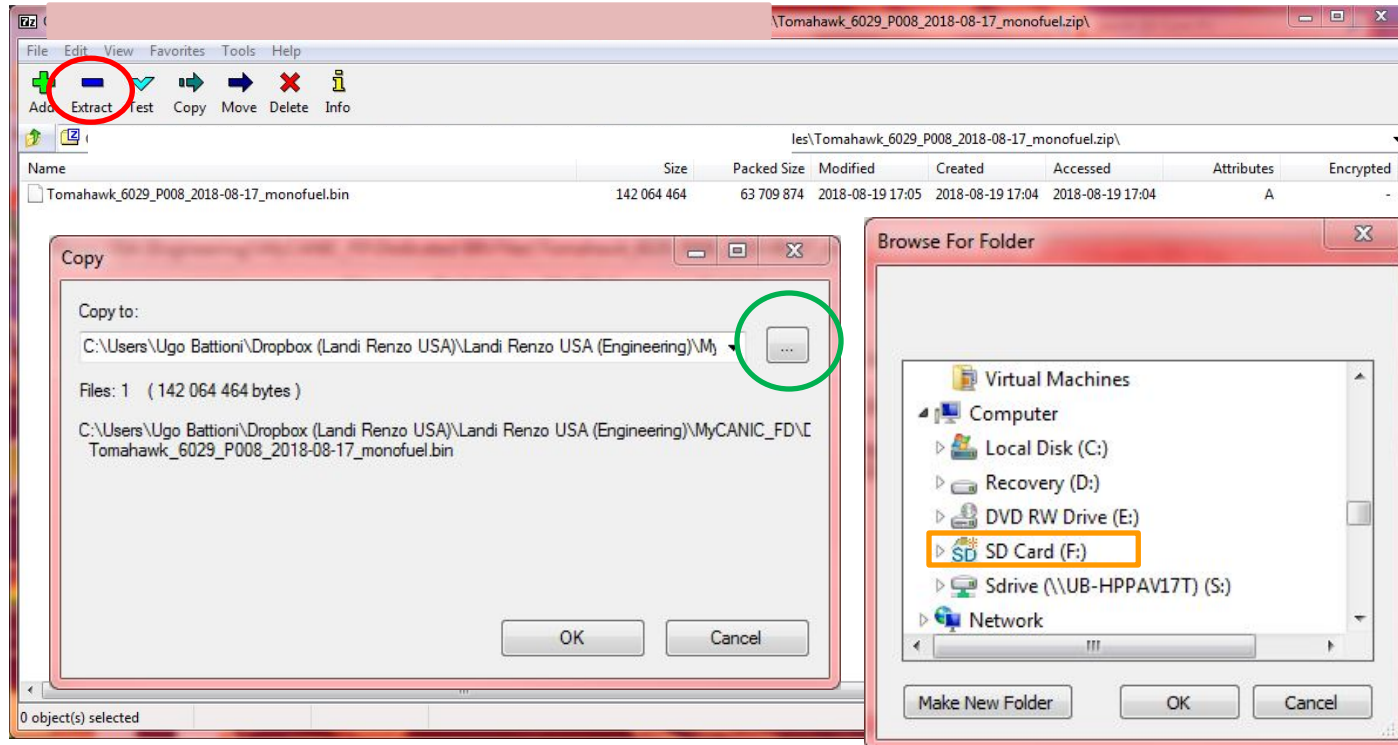
# Installing File to SD Card

1. Insert the SD card to your computer.
2. Delete the .BIN file preinstalled in the SD card.
3. After deleting the .BIN file you shouldn't have no files saved to the SD card.



# Installing File to SD Card

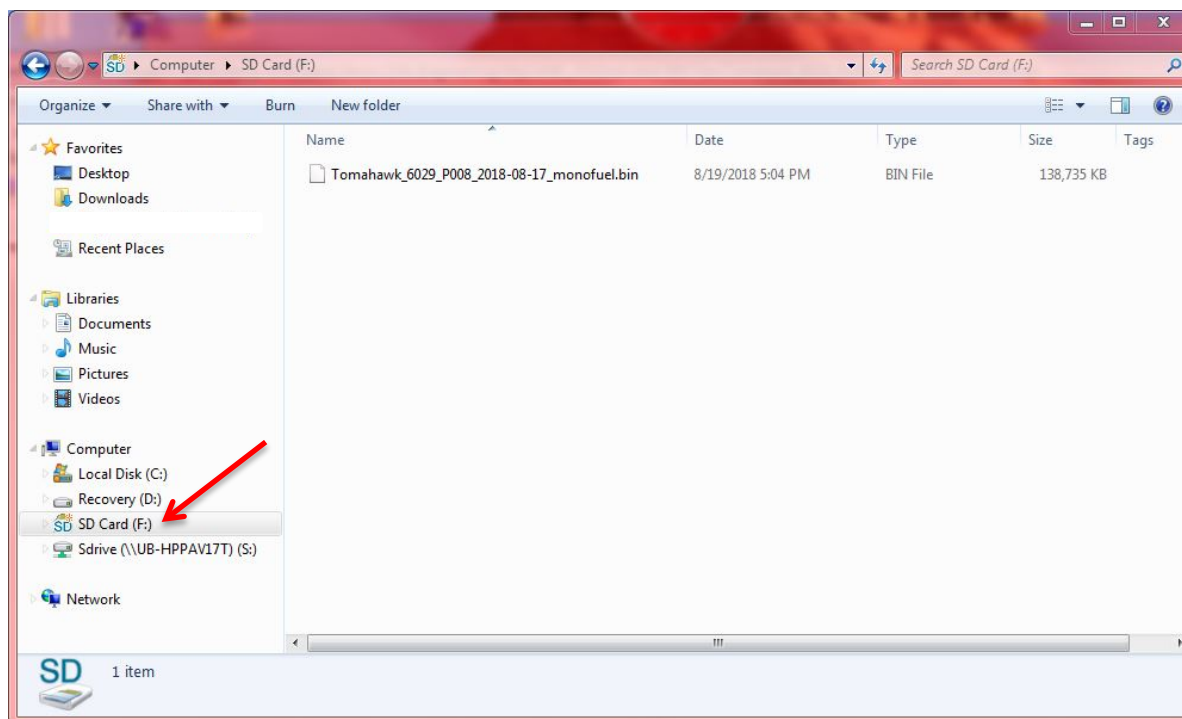
1. Open the .ZIP file sent to you from Landi Renzo USA
2. Click on the Extract button (red circle). After clicking a copy window will appear.
3. Copy the file to the SD card (green circle) Browse For Folder Window will appear.
4. Click on the SD card (orange rectangle) and click OK.



# Installing File to SD Card

The .BIN file will be copied if the previous steps were done properly.

1. After successfully copying the .BIN file, properly eject the SD card by right clicking on the SD card (red arrow).
2. Click Eject.
3. Now you can physically remove the SD card from the computer. Insert the SD card Fully into the MyCanic – FD.





# Getting to Know the MyCanic – FD

1. Up
2. Enter
3. Down
4. Right
5. Back
6. Left



# Flashing The Vehicle

1. Connect the MyCanic – FD into the vehicle via the OBD2 connector.
2. Turn the key on engine off.
3. The MyCanic – FD will turn on. At this point it will load any updates in to MyCanic.
4. After loading you will see Landi Renzo in the screen.
5. Press enter.



# Flashing The Vehicle

After clicking enter it will bring you to the main menu.

1. Press enter on programming



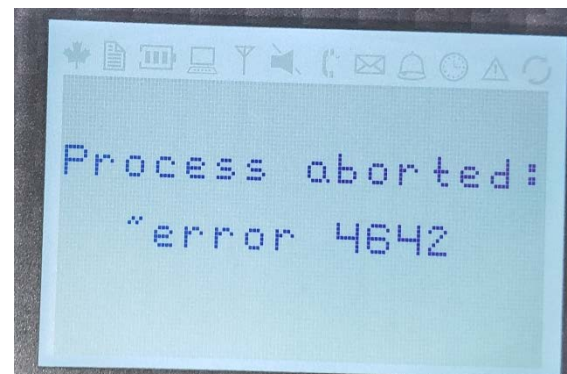
2. Press enter on Software Update



If you get “The Specified Calibration is Available for download!” continue to the steps in the following page.

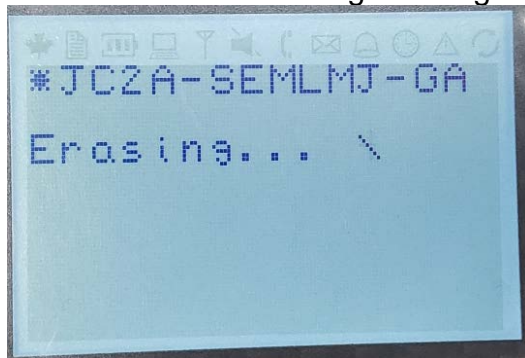


If you get “Process Aborted Error XXXX” STOP and contact Landi Renzo for further assistance.

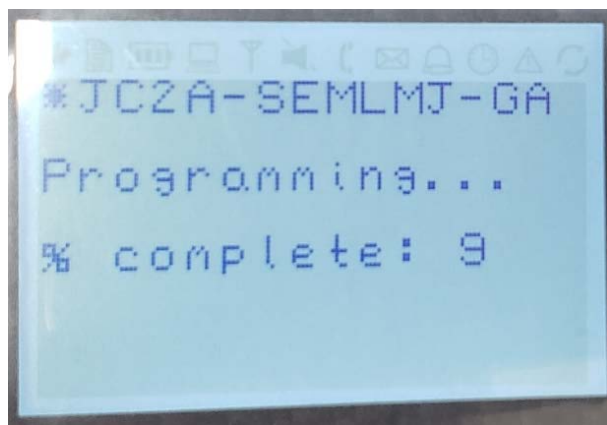


# Flashing The Vehicle

1. Press enter to start flashing. Erasing will begin.

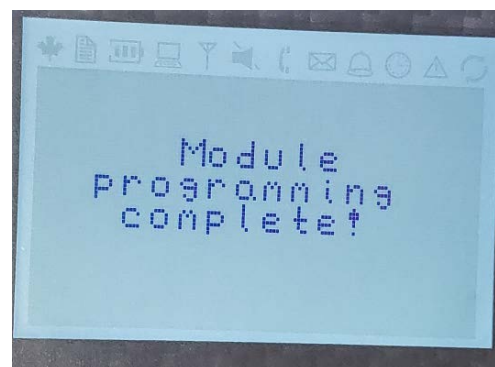


After Erasing it will start a % complete



After counting to 100% you will get "Module Programming complete!"

2. Press enter after seeing complete message.



This will bring you back to the main screen.

