



Ford F-59 CNG
UPS Service Parts Catalog
2019 P80 - Job # 20-26



SPC.0001
October 20, 2020

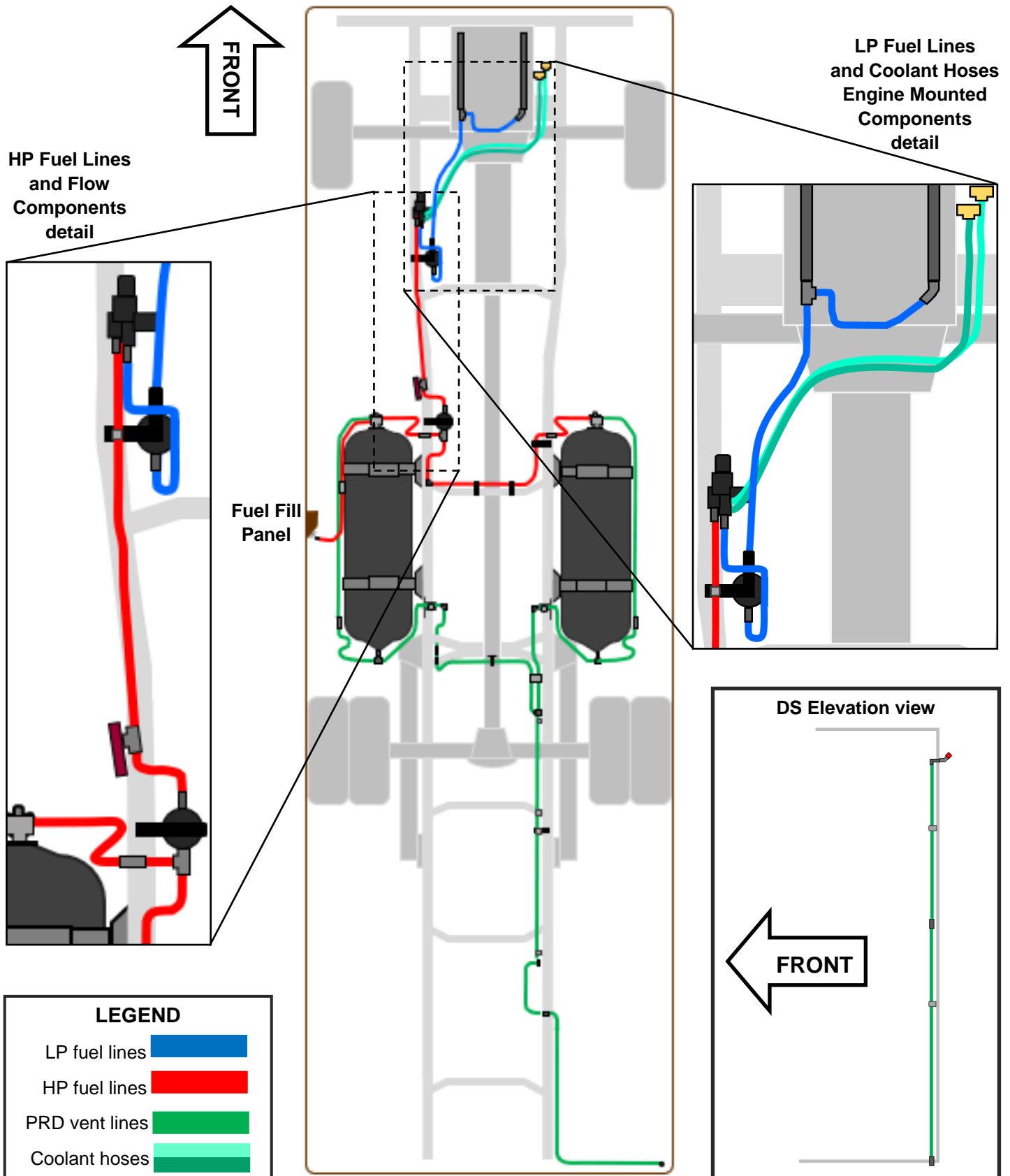
Table of Contents

	Page
Abbreviations Used	3
Fuel System Schematic	4
Engine Mounted Components	5
LP Fuel Lines & Coolant Hoses	6
LP Fuel Line & Coolant Hose Schematic	7
HP Fuel Lines	8
HP Fuel Line Schematic	9
PRD Vent Lines - tubes & fittings	10
PRD Vent Line Schematic	11
PRD Vent Lines - brackets, clamps, clips & fasteners	12
PRD Vent Line Schematic - brackets, clamps, clips & fastener locations	13
PRDs and PRD Vent Lines - cylinder mounted	14
Cylinder & Shield Components	15
Cylinder Mounting Components	16
Flow & Filtration Components	19
Fuel Fill Panel Components - front	20
Fuel Fill Panel Components - back	21
Special Tools	21
Electrical Components	22
Decals and Labels	23
Contact Information	24

Abbreviations Used

Item	Description
ASM	Assembly
CNG	Compressed natural gas
DS	Driver side
HP	High-pressure
LP	Low-pressure
MY	Model year
NPT	National pipe taper; full name: American National Standard Taper Pipe Thread
NS	Not serviced
POA	Part of assembly
PRD	Pressure relief device
PS	Passenger side
SS	Stainless steel
T-PRD	Thermal PRD
WB	Wheelbase

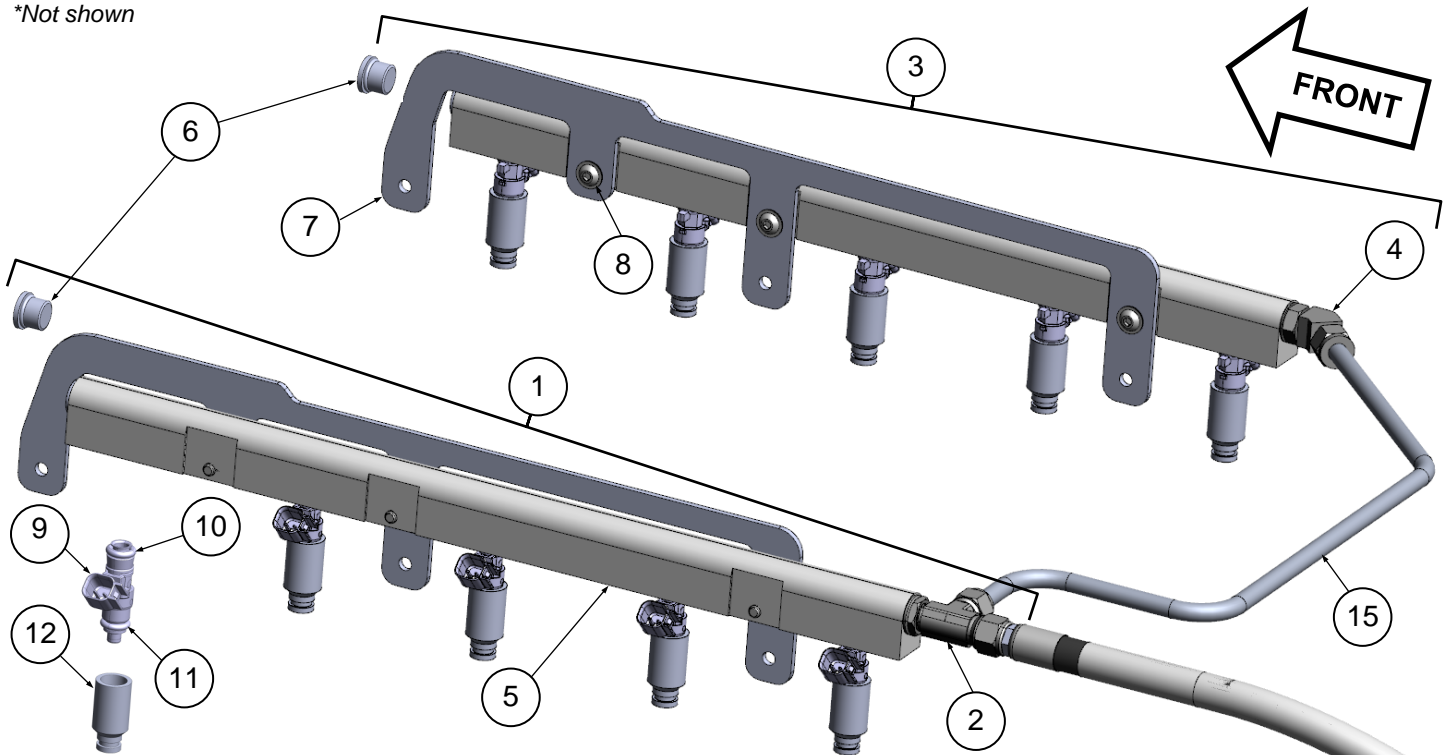
Fuel System Schematic



Engine Mounted Parts

Item	UPS p/n	Service p/n	Description	Chassis QTY
1		63100000	ASM, fuel rail, DS, 6.8L, CNG - includes 2, 5, 6, 7, (3) 8, (5) 9, (5) 11	1
2		10200226	Fitting, tee, fuel rail, driver side, 6.8L, CNG	1
3		63100001	ASM, fuel rail, PS, 6.8L, CNG - includes 4, 5, 6, 7, (3) 8, (5) 9, (5) 11	1
4		10200201	Fitting, 45-degree elbow, fuel rail, passenger side, 6.8L, CNG	1
5		61010013	Fuel rail, 6.8L, CNG (bare)	2
6		10200283	Fitting, straight plug, fuel rail, 6.8L, CNG	2
7		62080038	Bracket, single piece, fuel rail, 6.8L, CNG	2
8		69000541	Screw, fuel rail to fuel rail bracket mounting, 6.8L CNG - SET OF 6	6
9		61020015	Fuel injector, 6.8L, CNG [NOTE: requires QTY: 1 O-ring from (10)]	10
10		69000420	O-ring, fuel injector, upper, black, 6.8L, CNG – SET OF 5	10
11		69000517	O-ring, fuel injector, lower, 6.8L, CNG (POA 9) – SET OF 5	10
12		61180042	Spacer, fuel injector, 6.8L, CNG	10
13*		69000421	O-ring, fuel injector spacer, 6.8L, CNG (POA 11) - SET OF 5	10
14*		61090096	Cap, vacuum	1
15		63060016	ASM, LP fuel tube, fuel rail crossover	1
16*		69000419	Bolt, fuel rail bracket to intake manifold mounting - SET OF 6	6

*Not shown

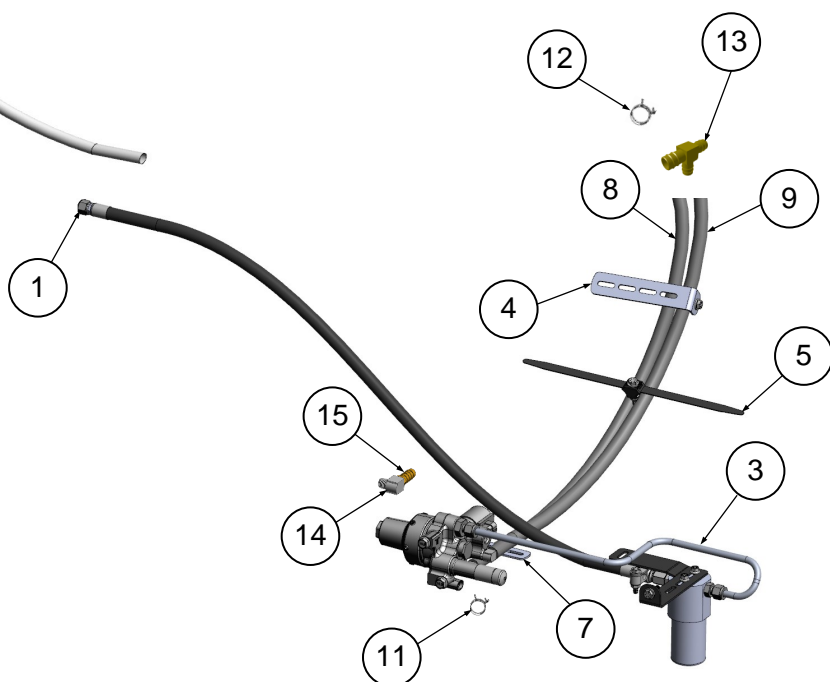
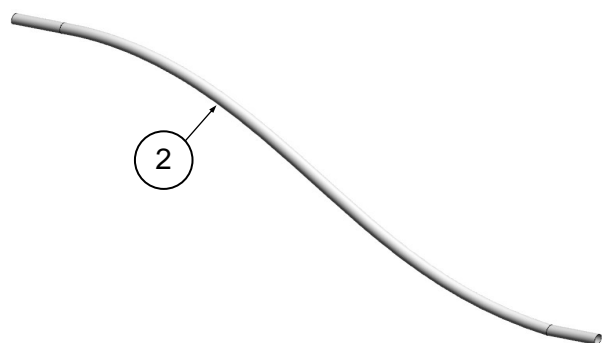
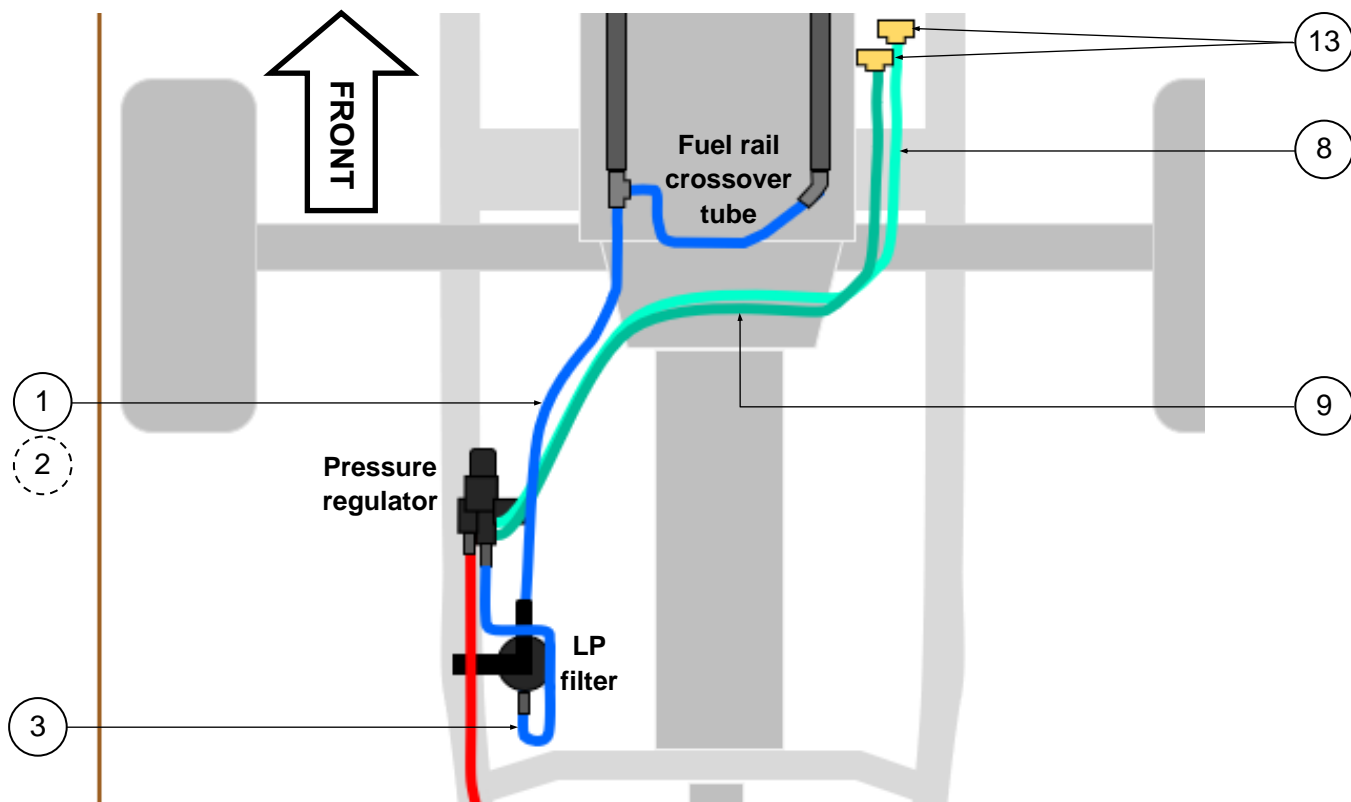


LP Fuel Lines & Coolant Hoses

Item	UPS p/n	Service p/n	Description	Chassis QTY
1		63060009	Hose, LP fuel, flexible - includes fittings and heat sleeve	1
2		61270000	Heat sleeve, LP fuel hose	1
3		63060007	ASM, LP fuel tube, regulator to LP filter	1
4		69000504	ASM, bracket, coolant hose routing, with hardware	1
5		69000422	Clip, dual tie strap - SET OF 13	13
6*		69000423	Clip, single tie strap - SET OF 2	2
7		69000505	ASM, bracket, fuel and coolant hose, with hardware	1
8		61170039	Hose, pressure regulator coolant, supply	1
9		61170038	Hose, pressure regulator coolant, return	1
10*		61270001	Heat sleeve, pressure regulator coolant hose	2
11		61180044	Clamp, coolant hose, 3/4 in	4
12		61180045	Clamp, coolant hose, 15/16 in	4
13		61180033	Fitting, tee, coolant hose	2
14		61180046	Fitting, elbow, pressure regulator coolant port	2
15		61180047	Fitting, straight barb	2
16*		10760200-1,5	Hex cap screw, 1/4-20 x 1.5 in <i>[NOTE: use QTY: 1 with (5)]</i>	n/a
17*		10761300	Flange top lock nut, 1/4 in <i>[NOTE: use QTY: 1 with (5)]</i>	n/a
18*		10761000	Flat washer, 1/4 in <i>[NOTE: use QTY: 2 with (5)]</i>	n/a

*Not illustrated

LP Fuel Line & Coolant Hose Schematic



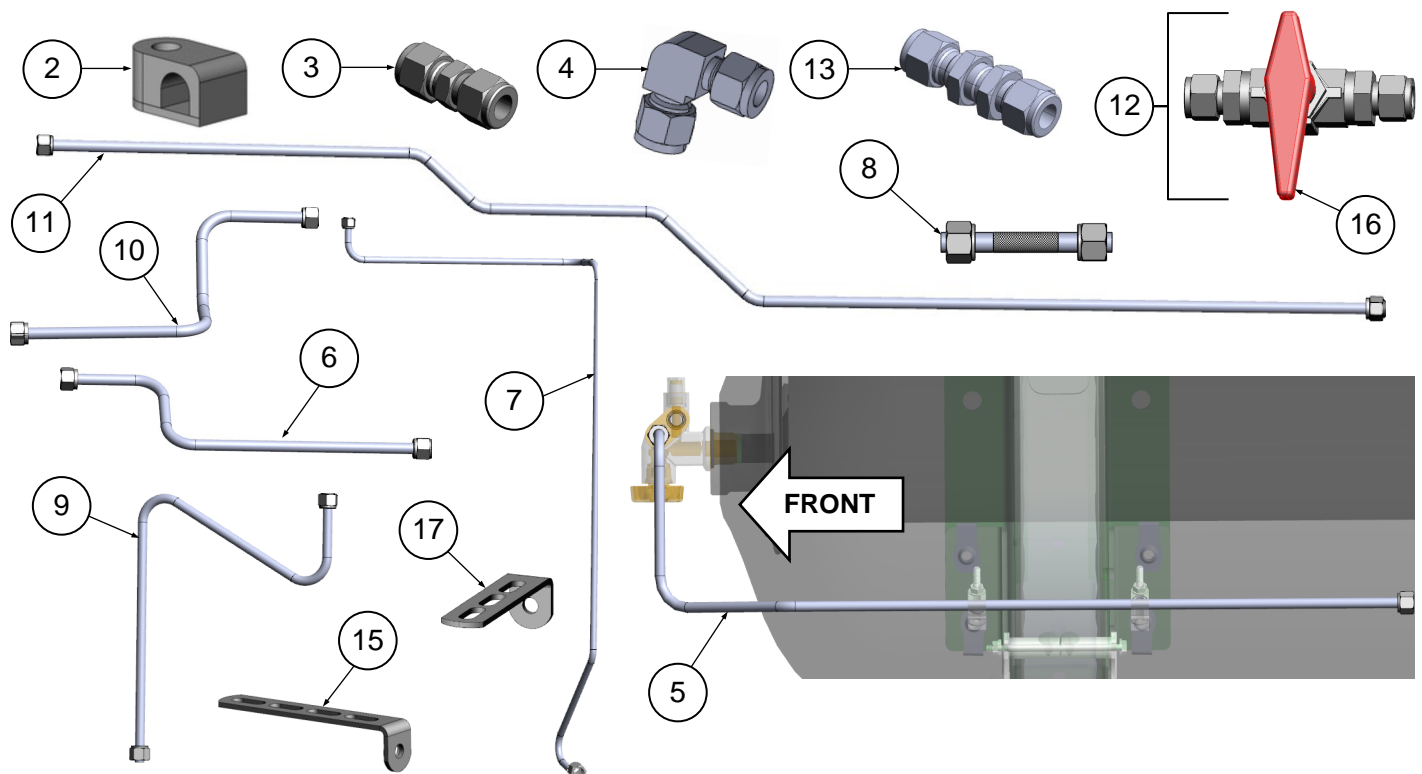
LEGEND

- LP fuel lines
- HP fuel lines
- Coolant hoses

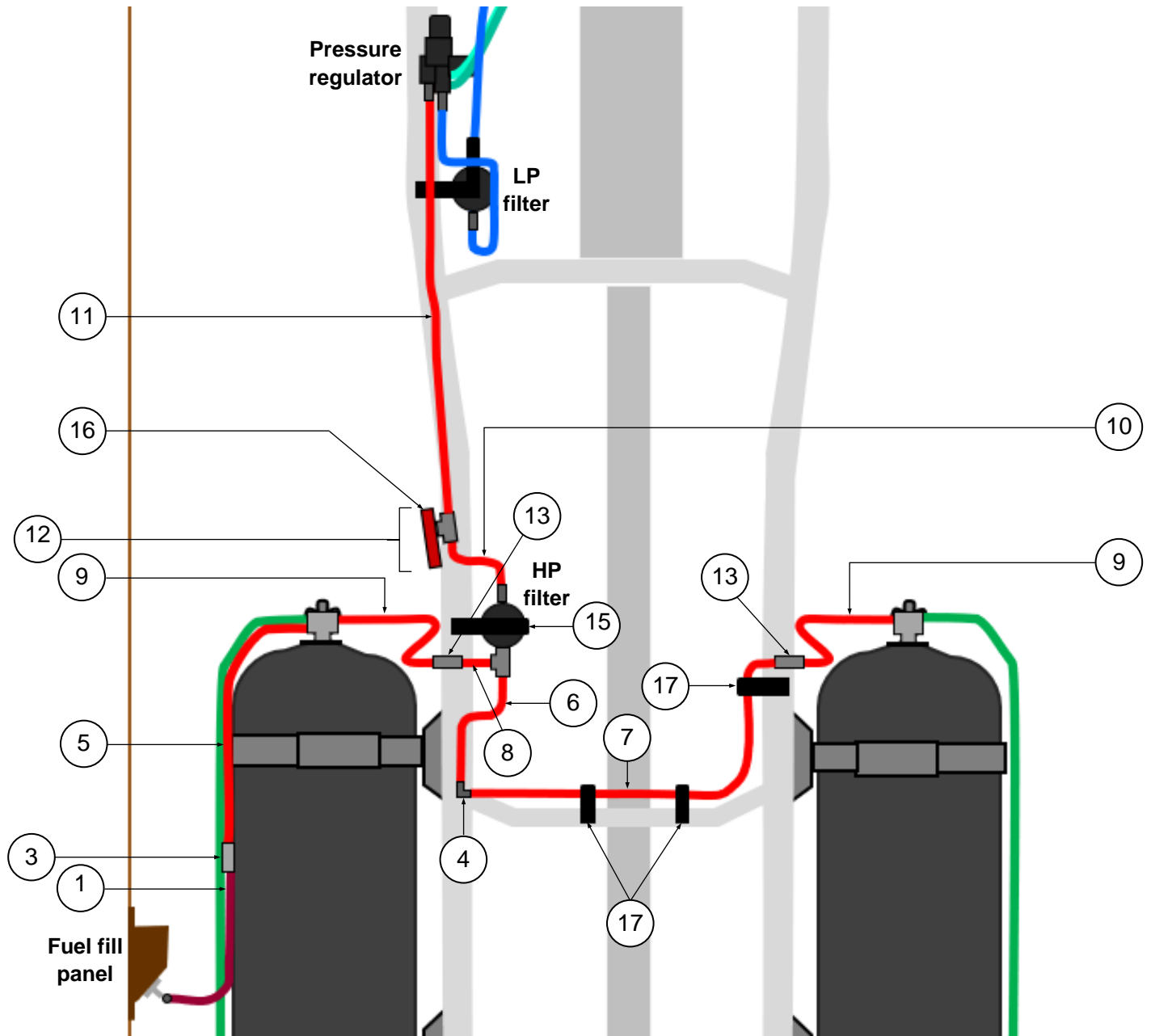
HP Fuel Lines

Item	UPS p/n	Service p/n	Description	Chassis QTY
1		61170046	Hose, HP flexible fuel	1
2		69000427	Clamp, tube, 3/8 in - SET OF 4	4
3		10200002	Fitting, union, 3/8 in	1
4		10200155	Fitting, elbow, 3/8 in	1
5		63060023	ASM, tube, HP fuel, flex hose to shutoff, 168 in WB, MY19	1
6		63060003	ASM, HP fuel tube, tee to tee, 168 in WB	1
7		63060008	ASM, HP fuel tube, tank to tank crossover, 168 in WB	1
8		63060006	ASM, HP fuel tube, HP filter tee to bulkhead	1
9		63060010	ASM, HP fuel tube, bulkhead to shutoff, 168 in WB	2
10		63060004	ASM, HP fuel tube, HP filter to quarter turn valve	1
11		63060005	ASM, HP fuel tube, quarter turn valve to regulator	1
12	4820721	10300158	Valve, 1/4-turn manual shutoff <i>[NOTE: includes (16)]</i>	1
13		10200023	Fitting, straight, bulkhead, 3/8 in, HP fuel line	2
14*		10761009	Flat Washer, 1/2 in <i>[NOTE: use QTY: 2 with (13)]</i>	4
15		62080033	Bracket, 4-slot, 1/4 in mounting hole	1
16	4823484	10300160	Valve handle, red	1
17		20103228	Bracket, 3-slot x 3/8 in hole, 90-degrees	3

*Not illustrated



HP Fuel Line Schematic

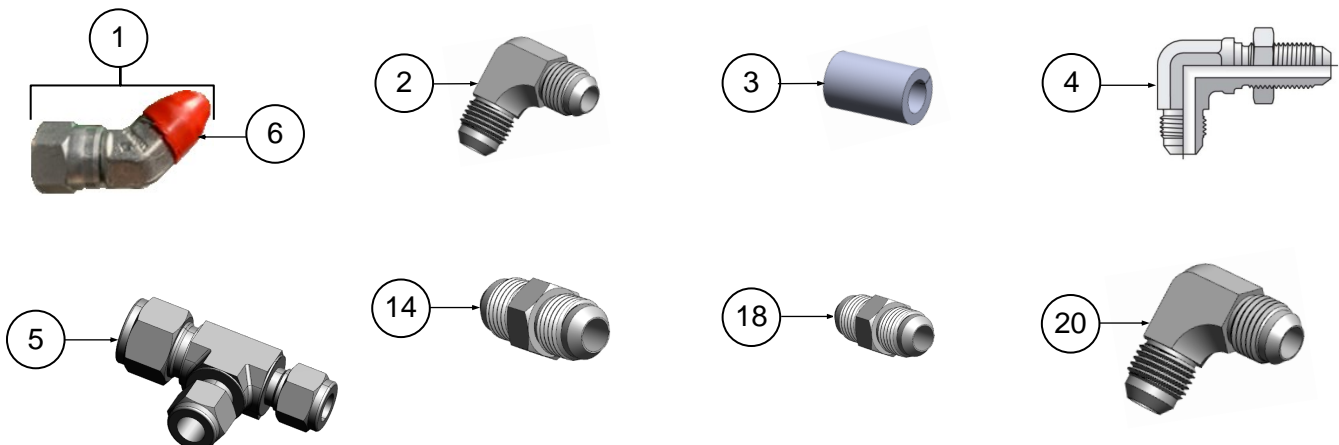


LEGEND

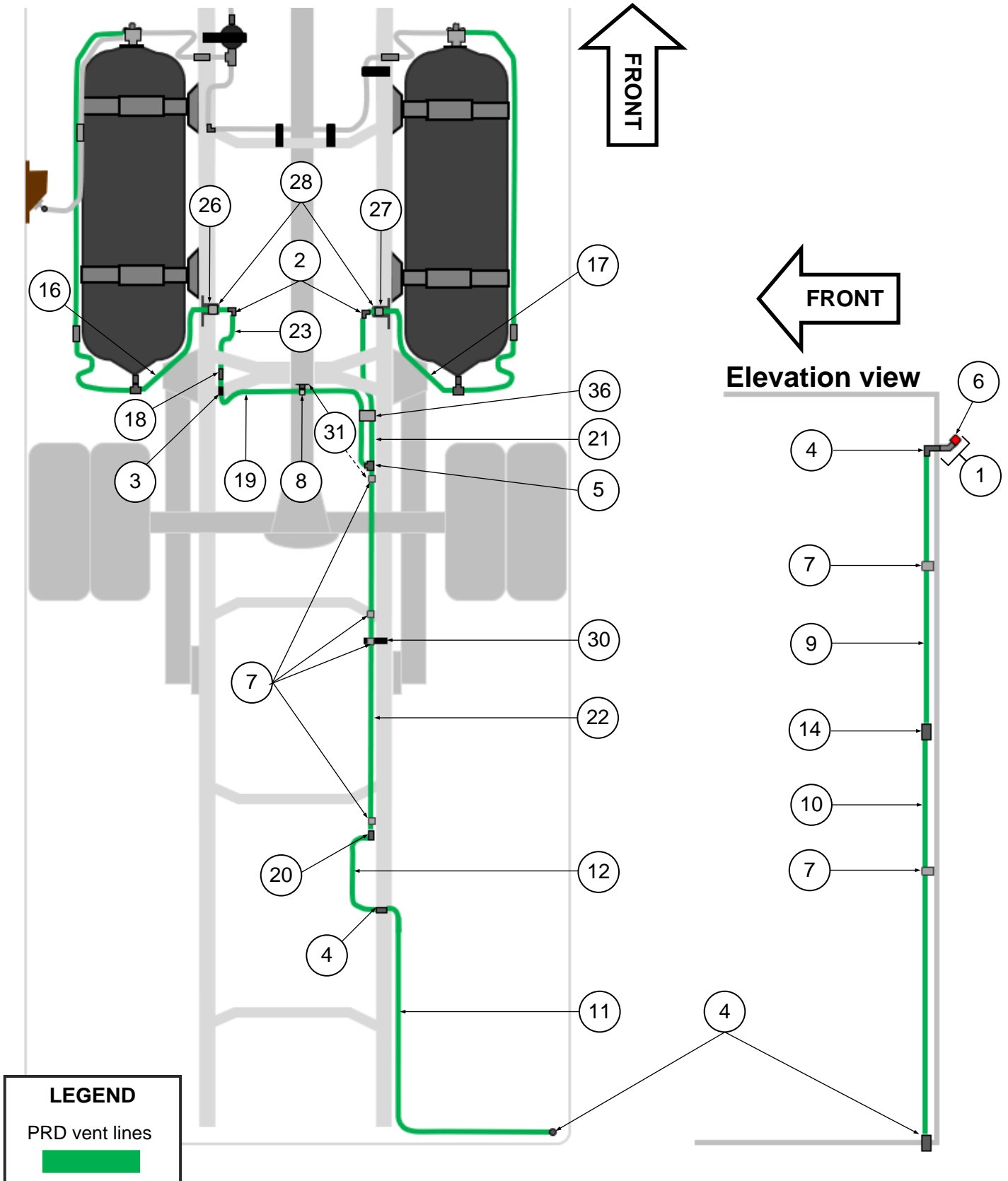
- LP fuel lines █
- HP fuel lines █
- PRD vent lines █
- Coolant hoses █

PRD Vent Lines - tubes & fittings

Item	UPS p/n	Service p/n	Description	Chassis QTY
1		63120000	ASM, fitting, 45-degree elbow, PRD vent outlet with heat shrink cap (6)	1
2		10210066	Fitting, JIC, 90-degree elbow, -6 male JIC, -6 male JIC	2
3		69000428	Bushing, tube - SET OF 3 [NOTE: bushing slips onto (19) where it is supported by OEM clamp]	1
4		10200518	Fitting, bulkhead, 90-degree elbow, -8 male JIC, -8 male JIC	3
5		10200285	Fitting, 1/2 in Tube O.D., 3/8 in Tube O.D., 3/8 in Tube O.D.	1
6		NS	Cap, heat shrink, PRD vent outlet (POA 1) [NOTE: if cap is missing, (1) must be ordered]	1
9		63060022	ASM, tube, PRD vent, body, 1/2 in, union to bulkhead (interior)	1
10		63060042	ASM, tube, PRD vent, body, 1/2 in, elbow to union (interior)	1
11		63060043	ASM, tube, PRD vent, body, 1/2 in, bulkhead to elbow (exterior)	1
12		63060019	ASM, tube, PRD vent, body, 1/2 in, union to bulkhead (exterior)	1
14		10200518	Fitting, 1/2 in, union, straight, 1/2 in JIC, 1/2 in JIC	1
16		63060011	ASM, tube, PRD vent, chassis, 3/8 in, PRD to union (DS), 168 in WB	1
17		63060013	ASM, tube, PRD vent, chassis, 3/8 in, PRD to union (PS), 168 in WB	1
18		10240068	Fitting, JIC, straight, -6 male JIC, -6 male JIC	1
19		63060014	ASM, tube, PRD vent, chassis, 3/8 in, union to tee (PS), 168 in WB	1
20		10240226	Fitting, 1/2 in, 90-degree elbow, -8 male JIC, -8 male JIC	
21		63060018	ASM, tube, PRD vent, chassis, 3/8 in, union to tee (PS), 168 in WB	1
22		63060015	ASM, tube, PRD vent, chassis, 1/2 in, tee to union	1
23		63060017	ASM, tube, PRD vent, chassis, 3/8 in, elbow to union (DS), 168 in WB	1



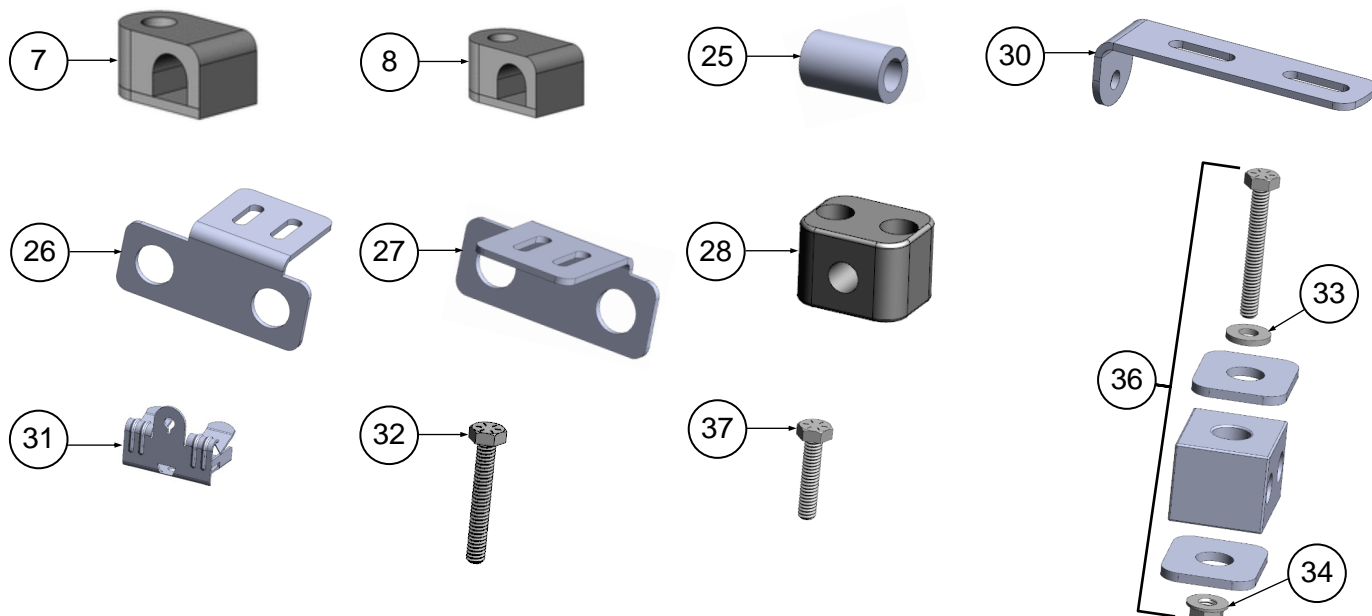
PRD Vent Line Schematic



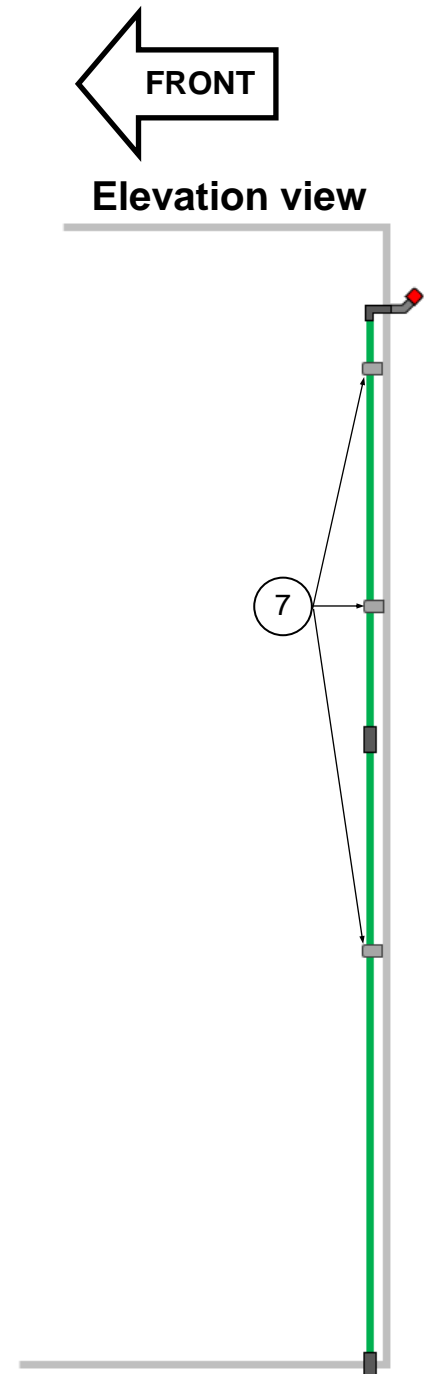
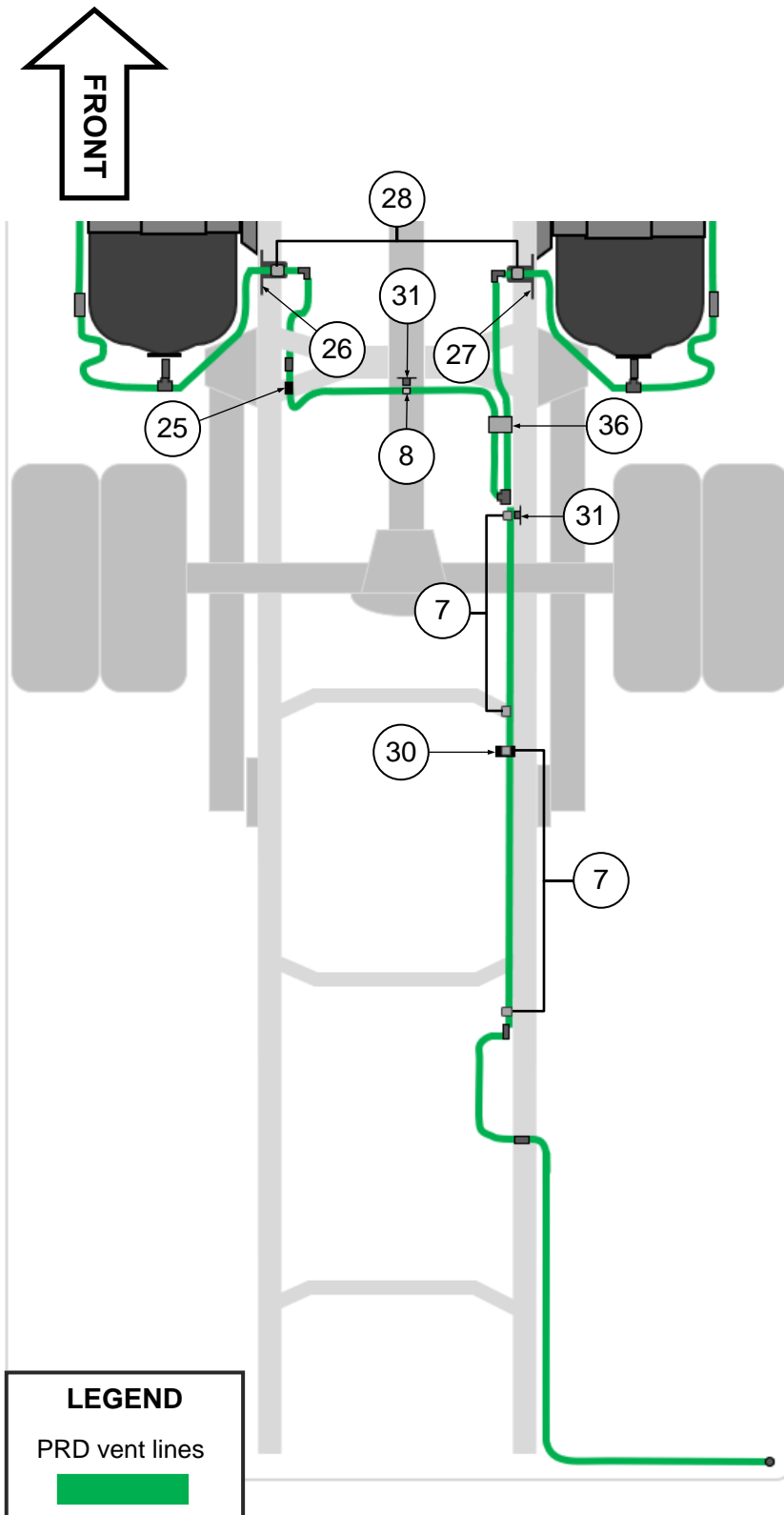
PRD Vent Lines - brackets, clamps, clips & fasteners

Item	UPS p/n	Service p/n	Description	Chassis QTY
7		69000425	Clamp, tube, 1/2 in - SET OF 5	7
8		69000427	Clamp, tube, 3/8 in, single hole - SET OF 4	4
25		69000428	Bushing, tube - SET OF 3 [NOTE: Bushing slips onto (19) where it is supported by OEM clamp]	1
26		62080040	Bracket, tube support, DS	1
27		62080041	Bracket, tube support, PS	1
28		10701506	Tube clamp, kit, 3/8 in, double mounting hole [NOTE: includes top plate (not shown)]	2
29*		61090115	Metric hex nut, M18 x 2.5 mm [NOTE: used with (26) & (27); QTY: 2 required per side]	4
30		20103227	Bracket, 2-slot x 3/8 in hole, 90-degrees [NOTE: used with QTY: 1 (7)]	1
31		61090095	Flange clip, zip tie mount [NOTE: used with (7) and (8)]	1
32		10760200-1,25	Hex cap screw, 1/4-20 x 1.75 in [NOTE: used with (7)]	3
33		10760100	Washer, 1/4-in	4
34		10761300	Flange top lock nut, 1/4 in	4
35*		10760200-1,5	Hex cap screw, 1/4-20 x 1.5 in [NOTE: used with (7) on inside of body]	3
36		61090114	Kit, service, clamp, twin tube, 1/4 in or 3/8 in tubing, with plates and hardware	1
37		10760200-1,25	Hex cap screw, 1/4-20 x 1.25 in [NOTE: used with (7)]	1
38*		10760200-1	Hex cap screw, 1/4-20 x 1 in [NOTE: used with 8)]	1

*Not shown



PRD Vent Line Schematic - brackets, clamps, clips & fastener locations

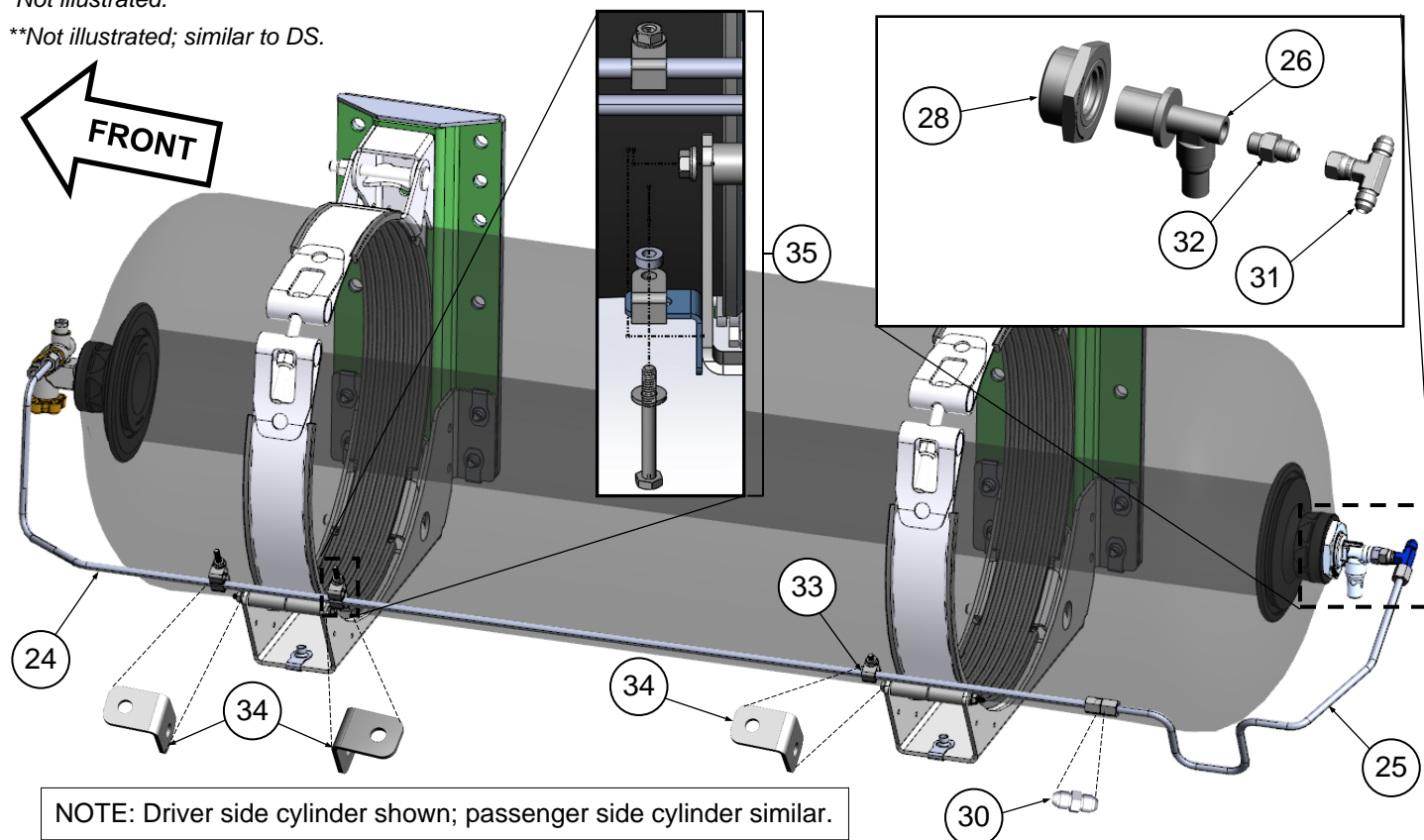


PRDs & PRD Vent Lines - cylinder mounted

Item	UPS p/n	Service p/n	Description	Chassis QTY
22**		21619007	ASM, PRD vent tube, 3/8 in, valve to union, PS	1
23**		21619009	ASM, PRD vent tube, 3/8 in, union to PRD, PS	1
24		21619006	ASM, PRD vent tube, 3/8 in, valve to union, DS	1
25		21619008	ASM, PRD vent tube, 3/8 in, union to PRD, DS	1
26	4819419	10300077	T-PRD - includes (27)	2
27*		10500021	O-ring, T-PRD (POA 26)	2
28		240321-97	PRD adapter <i>[NOTE: Requires (29)]</i>	2
29*		240318-226	O-ring, PRD adapter	2
30		10240068	Fitting, union, male to male	2
31		10240697	Fitting, tee, male, male, female	2
32		10240004	Fitting, union, 1/2-20 Male SAE ORB to -6 Male JIC	2
33		69000506	Tube clamp, 3/8 in, cylinder PRD vent tube, with hardware - SET OF 4	7
34		69000507	Bracket, tube clamp, with hardware	5
35		69000542	Kit, 3/8 in tube clamps with spacer and hardware	2

*Not illustrated.

**Not illustrated; similar to DS.

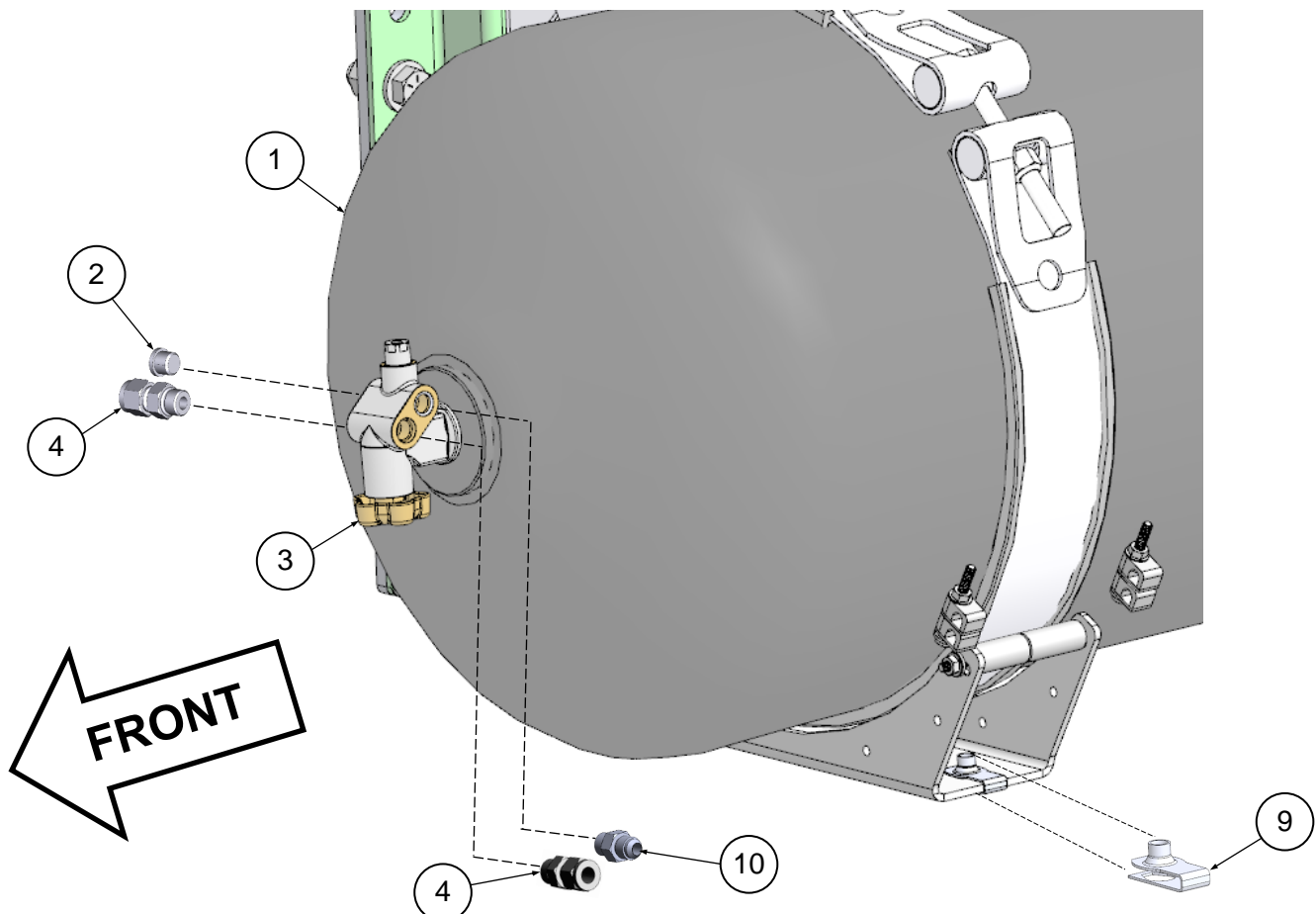


Cylinder & Shield Components**

Item	UPS p/n	Service p/n	Description	Chassis QTY
1		240101-248A	Cylinder, CNG, 18-in x 60-in, 20 year life	2
2		10200283	Plug, manual shutoff valve	3
3	4820709	10300102	Manual shutoff valve, cylinder	2
4	4820658	10200062	Fitting, SAE, connector	3
5*		61090105	Washer, flat, cylinder shield mounting	16
6*		10761507	Lock washer, cylinder shield mounting	16
7*		10760202-1,75	Hex cap screw, cylinder shield mounting, inside	8
8*		10760202-1,25	Hex cap screw, cylinder shield mounting, outside	8
9		69000508	Nut clip, cylinder shield mounting - SET OF 4	20
10		10240105	Fitting, JIC, Straight, -6 Male JIC, 9/16-18 Male SAE, SS (QTY	2

*Not illustrated

**Refer to PRDs & PRD Vent Lines - cylinder mounted (above) for other cylinder components.



NOTE: Driver side cylinder shown; passenger side cylinder similar.

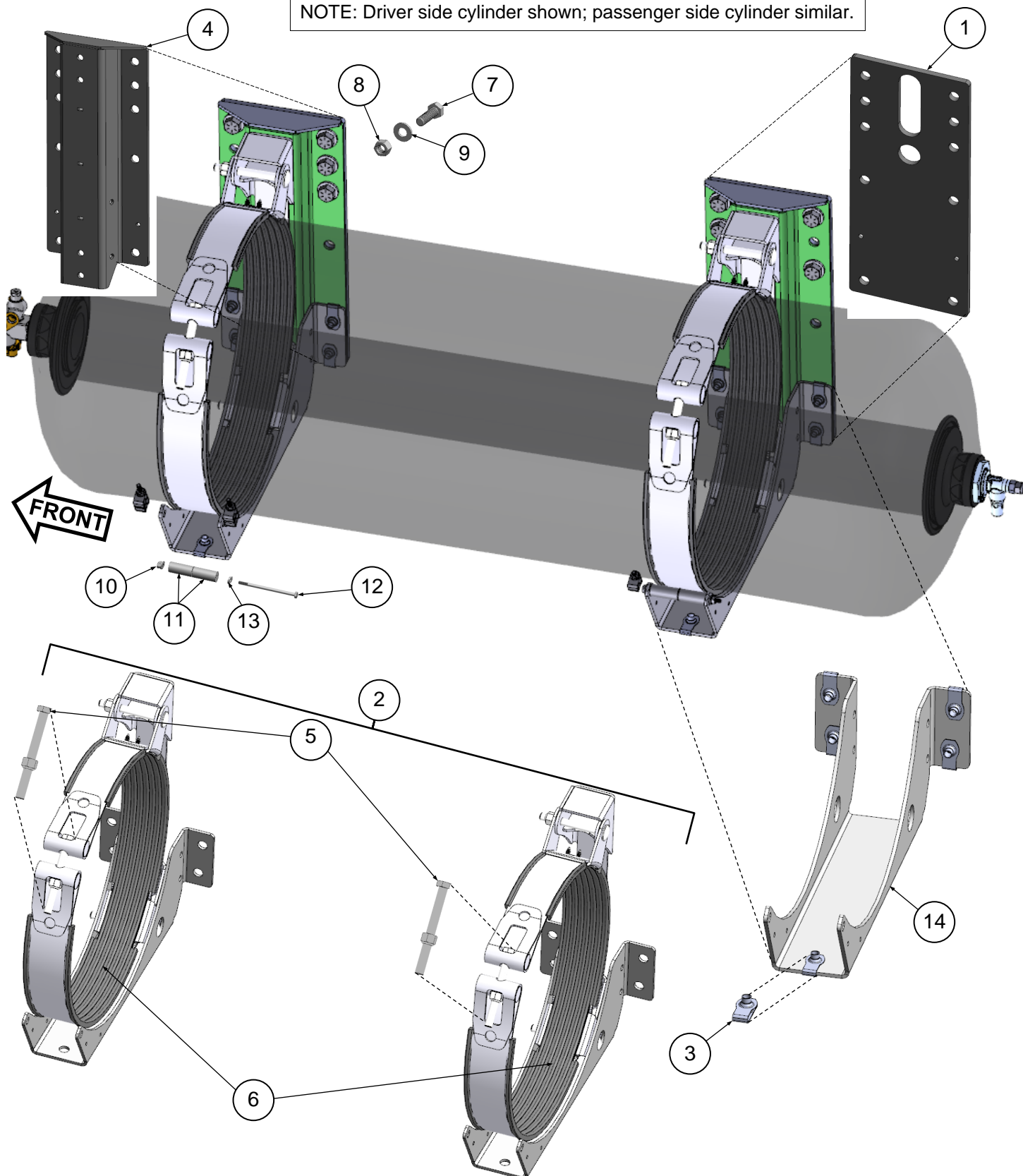
Cylinder Mounting Components

Item	UPS p/n	Service p/n	Description	Chassis QTY
1		62080050	Plate, stiffener, cylinder bracket mount	4
2		240085-25	Kit, bracket, cylinder mounting, pair <i>[NOTE: Brackets must be supplied in pairs.]</i>	4
3		69000508	Nut clip, cylinder shield mounting - SET OF 4	20
4		62080052	Subassembly, welded adapter bracket	4
5		NS	Hardware, strap tightening (POA 6)	4
6		69000540	Kit, isolator, cylinder mounting - includes strap tightening hardware (5) - SET OF 2 <i>[NOTE: Isolators must be replaced in pairs]</i>	4
7		10760206-2	Hex cap screw, cylinder bracket mounting	16
8		10761660	Lock nut, cylinder bracket mounting	16
9		10710005	Flat washer, cylinder bracket mounting	32
10		10761300	Flange top lock nut, cylinder bracket spacer	4
11		61090117	Spacer <i>(NOTE: two required per cylinder mount)</i>	8
12		10760200-4,75	Hex cap screw, cylinder bracket spacer	4
13		10761000	Flat washer, cylinder bracket spacer	4
14		62080043	Bracket, cylinder shield mounting	4

**Not illustrated*

Cylinder Mounting Components

NOTE: Driver side cylinder shown; passenger side cylinder similar.

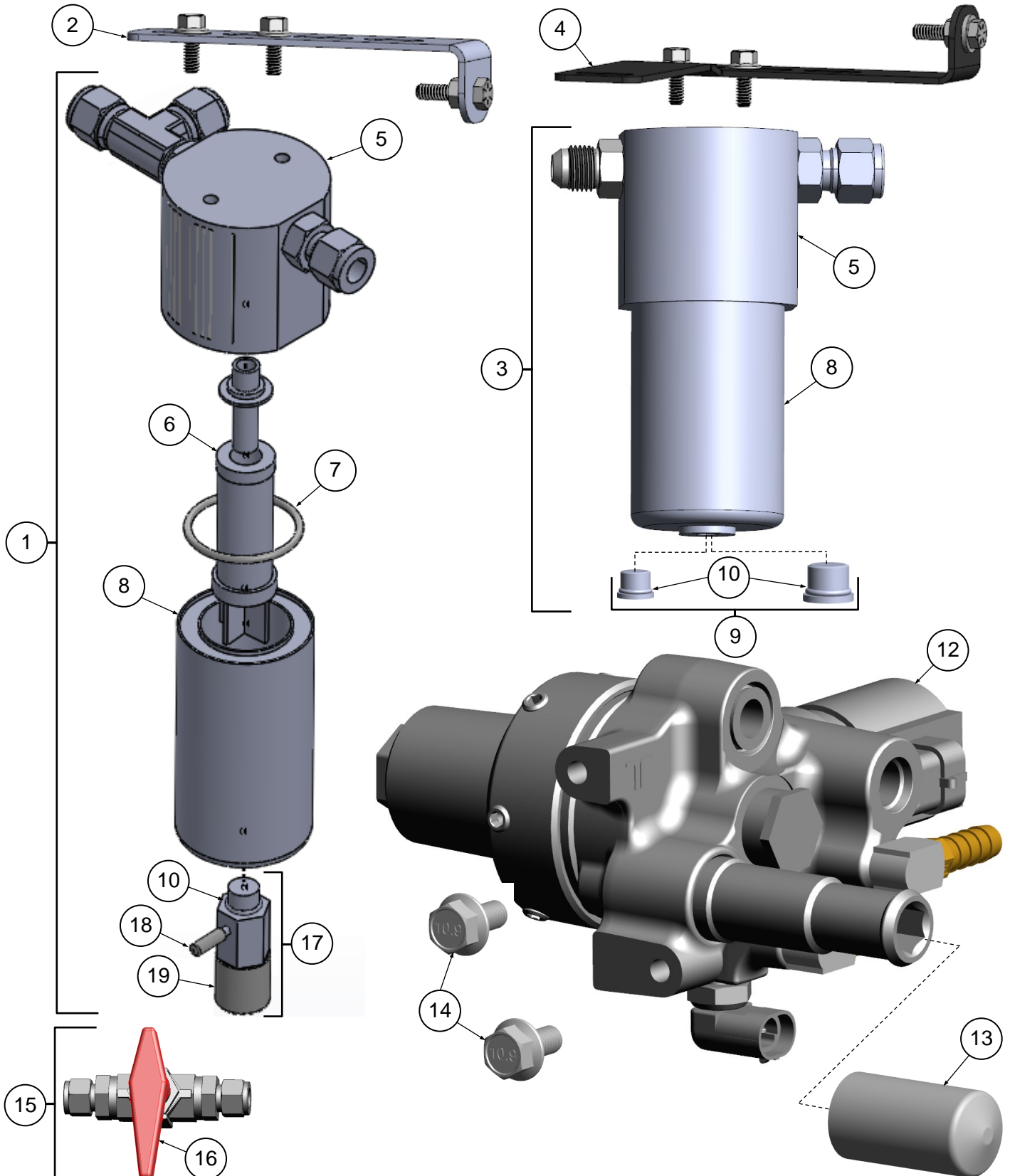


Flow & Filtration Components

Item	UPS p/n	Service p/n	Description	ASM QTY
1		63110019	ASM, HP fuel filter - includes fittings, bleed valve, element, and O-rings	1
2		69000433	Kit, Service, HP fuel filter mounting - includes bracket and hardware	1
3		63110020	ASM, LP fuel filter - includes fittings, plug, element, and O-rings	1
4		69000434	Kit, Service, LP fuel filter mounting - includes bracket and hardware	1
5	NS	NS	Filter head - (POA 1 and 3)	2
6		NS	Filter element, CNG, F-59 (POA 11)	2
7		61160020	O-ring, filter bowl (POA 1 and 3) <i>[NOTE: also included in (11)]</i>	2
8	NS	NS	Filter bowl (POA 1 and 3)	2
9		69000543	Kit, filter bowl plug - includes QTY: 1 -4 plug with (10) and QTY: 1 -6 plug with (10) <i>[NOTE: Used on LP filter only]</i>	1
10	NS	NS	O-ring, LP filter plug (POA 9) <i>[NOTE: also included with ((10), 11), and (17)]</i>	2
11*		69000481	Kit, Service, filter element - includes (6), (7), and O-ring lube	2
12		63110002	ASM, pressure regulator - includes compression fittings <i>(not shown)</i> and cap (13)	1
13		61090107	Cap, pressure regulator PRD cover	1
14		69000429	Bolt, pressure regulator mounting - SET OF 2	2
15	4820721	10300158	Valve, 1/4-turn manual shutoff, includes (16)	1
16	4823484	10300160	Valve handle, red	1
17		69000539	Kit, bleed valve, HP filter - includes (17), (18) and (19)	1
18		61090128	Cap, 1/8 in <i>[NOTE: Must be used with (17)]</i>	1
19		61090129	Cap, 5/8 in-11/16 in I.D. <i>[NOTE: Must be used with (17)]</i>	1

*Not illustrated

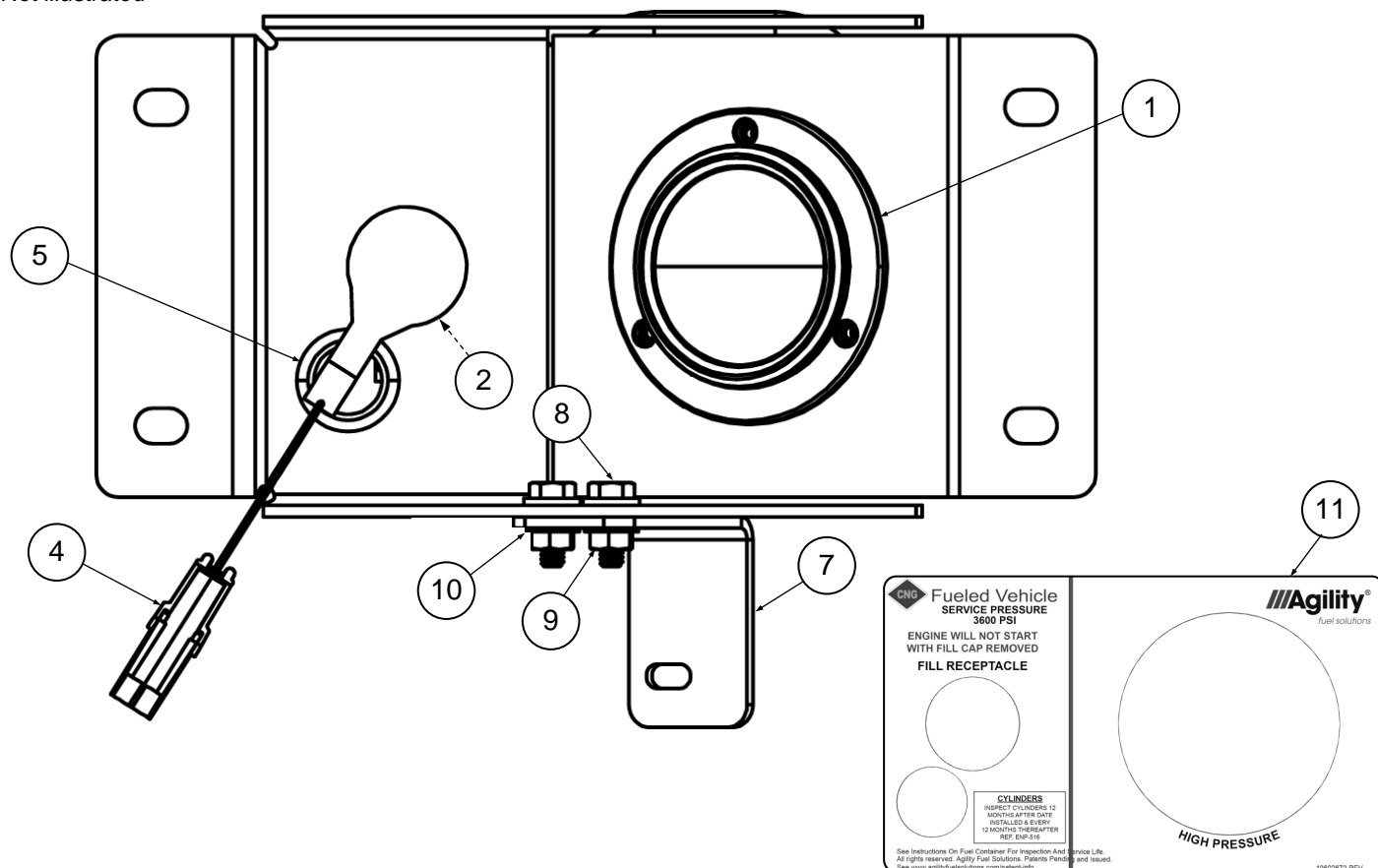
Flow & Filtration Components



Fuel Fill Panel Components - front

Item	UPS p/n	Service p/n	Description	ASM QTY
1		24100072	ASM, HP fuel gauge - includes nut and ferrule	1
2	4819410	10300712	Receptacle, fuel fill	1
3*	NS	NS	O-ring, fuel fill receptacle - POA 12 <i>[NOTE: O-ring is included in (6)]</i>	1
4	4819371	10404006	Kill cap, Drive Away Protection (DAP)	1
5		10702936	Grommet, fuel fill panel	1
6*	4822716	10500059	Kit, service, O-ring assortment	n/a
7		62080057	Bracket, FMM box, UPS 2020	1
8		10761300	Flange top lock nut, 1/4-20	2
9		10760200-0075	Hex cap screw, 1/4-20 X 3/4 in	2
10		10761000	Flat washer, 1/4 in	2
11		10602672	Decal, 631, Fill Panel	1
12*		63110009	ASM, fuel fill panel, complete <i>Includes (1), (2), (3), (4), (5), (7), (8), (9), (10), (11), (14), (15), (16), (17), (18)</i>	1
13*		61090124	Clamp, ratchet <i>[NOTE: Used to secure HP flex hose to (7)]</i>	1

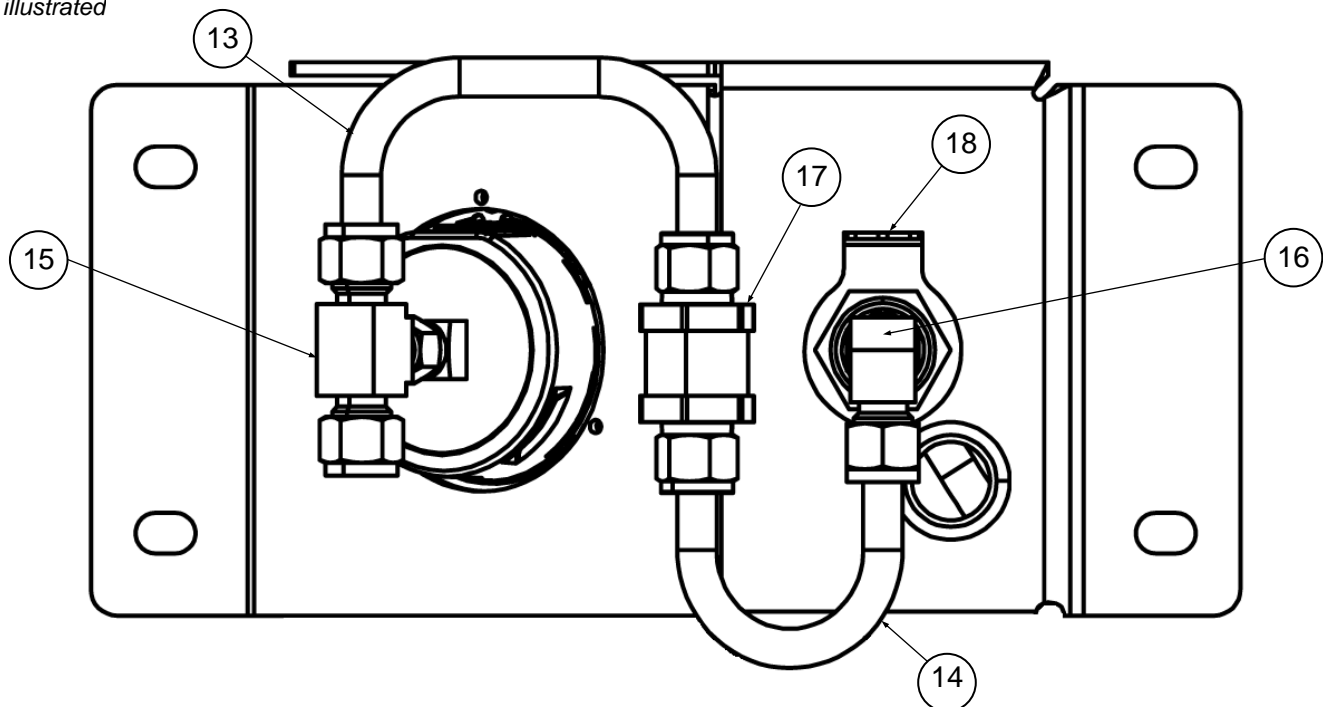
*Not illustrated



Fuel Fill Panel Components - rear

Item	UPS p/n	Service p/n	Description	Chassis QTY
13		63060111	ASM, HP fuel tube, fill panel, HP gauge to check valve	1
14		63060112	ASM, HP fuel tube, fill panel, fill receptacle to check valve	1
15		10200213	Fitting, tube, tee, HP gauge	1
16		10200180	Fitting, tube, elbow, fill receptacle	1
17		10300323	Check valve	1
18		20104137	Bracket, grounding wire	1

*Not illustrated



Special Tools

Item	UPS p/n	Service p/n	Description
1*		69500019	Kit, defueling, CNG, service - includes (2), (3), (4)
2		69500020	Hose, defueling, CNG, service
3*		69500018	Supply solenoid jumper harness, service
4*		69500024	Defueling ground harness, service

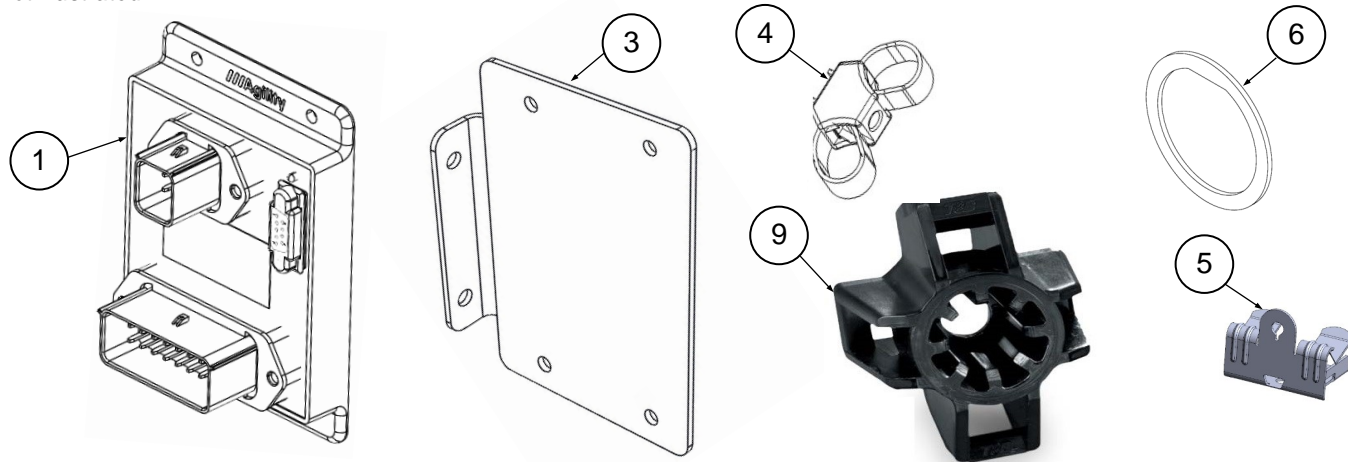
*Not illustrated



Electrical Components

Item	UPS p/n	Service p/n	Description	Chassis QTY
1		20102905	ECU, Ford CNG, PTS_FORD_03.GAU, FW 5.0	1
2*		69000487	Kit, ECU mounting hardware	1
3		69000486	Kit, Service, Ford F-59 ECU bracket mounting - includes bracket, hardware, and (2)	1
4		69000422	Clip, dual tie strap - SET OF 13	13
5		61090095	Flange clip, zip tie mount	2
6		62160001	Gasket, engine compartment bulkhead harness connector	1
7*		61040014	Harness, chassis, Ford F-59, mid-body FMM	1
8*		61040013	Harness, cabin, Ford F-59	1
9		61090110	Mount, stud, 4-way tie down	2
10*		62280000	Edge guard <i>[NOTE: Used to protect chassis harness as it passes below frame rail to fill panel]</i>	1
11*		61090106	Button head zip tie	2

*Not illustrated

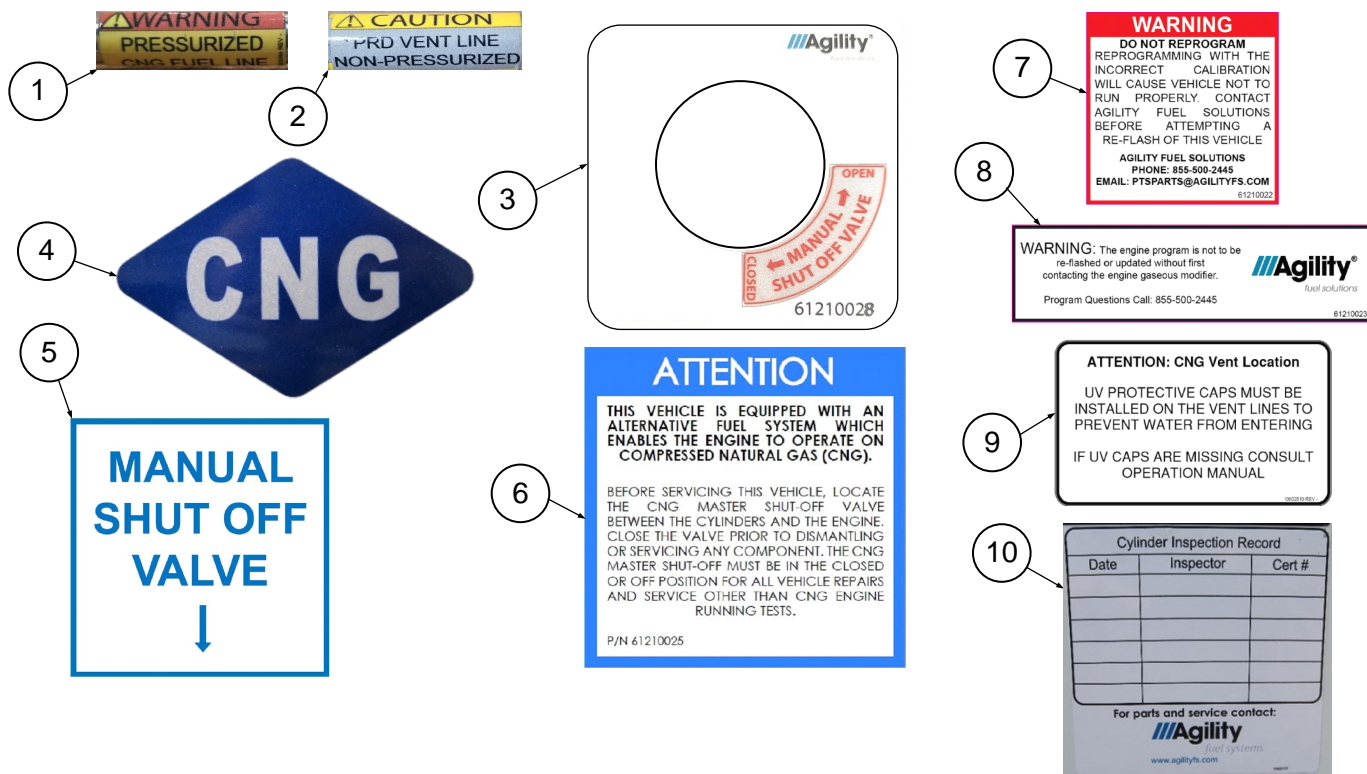


Decals & Labels

Item	UPS p/n	Service p/n	Description	Chassis QTY	Location
1	4824783	10602484	Decal, WARNING Pressurized CNG Fuel Line	†	Fuel lines
2		10602442	Decal, PRD Vent Line, CAUTION	†	PRD vent lines
3		61210028	Decal, Manual Shut Off Valve	1	DS chassis rail
4	3467644	10602105	Decal, CNG blue diamond	3	Body sides and rear††
5		61210024	Decal, Manual Shut Off Valve, 2.5x2.5	1	DS body
6		61210025	Decal, ATTENTION, Master Shut-Off Valve, CNG, 3x3	1	Engine compartment firewall
7		61210022	Decal, Reprogram Warning, 2x2	1	Engine compartment firewall
8		61210023	Decal, Reprogram Warning, 1x4	1	Adjacent to OBD-II port
9		10602610	Decal, WARNING PRD Vent Location	1	Body, adjacent to PRD vent tube outlet
10		10602107	Decal, Cylinder Inspection Record	2	Cylinders; visible inside shield

†Decal shall be installed every 18-in. to 24-in.

††Decal cannot be installed on rear bumper per U.S. DOT mandate. Side decals must be installed adjacent to DOT number.





3335 Susan Street
Suite 100
Costa Mesa, CA 92626
www.agilityfuelsolutions.com



Customer Care

+1 877 234 1722 (toll-free, U.S. and Canada)

UPS Direct Access Prompt: 6



Parts Orders

ptsparts@agilityfs.com

SPC.0001
October 20, 2020