

# HARMONEE SQUARE MIXED-USE DEVELOPMENT

*Harmonee Ave  
& Underwood Ave  
Wauwatosa, Wisconsin*



## DEVELOPMENT FEATURES

RETAIL SPACE	7,509 SF Total
# OF APARTMENTS	30
SPACE AVAILABLE	2,801 SF (Divisible)
ON-SITE PARKING	Min 34 Stalls + street parking (See parking map)
PUBLIC PARKING AVAILABLE IN AREA	Approx. 480 Spaces
LEASE RATE / TYPE	Negotiable / NNN
NET EXPENSES	\$6.42 / SF

## DEMOGRAPHICS

	1 MILE	3 MILES	5 MILES
Population	15,686	166,202	466,486
Median Income	\$68,994	\$45,403	\$37,979
# of HH	6,882	68,827	180,395

## TRAFFIC COUNT

Underwood Avenue	12,300 (AADT)
------------------	---------------

For more information, please contact:

**ANDY FISHLER, MBA, CCIM**  
Principal  
(414) 699-1637 (mobile)  
[afishler@luthergrp.com](mailto:afishler@luthergrp.com)

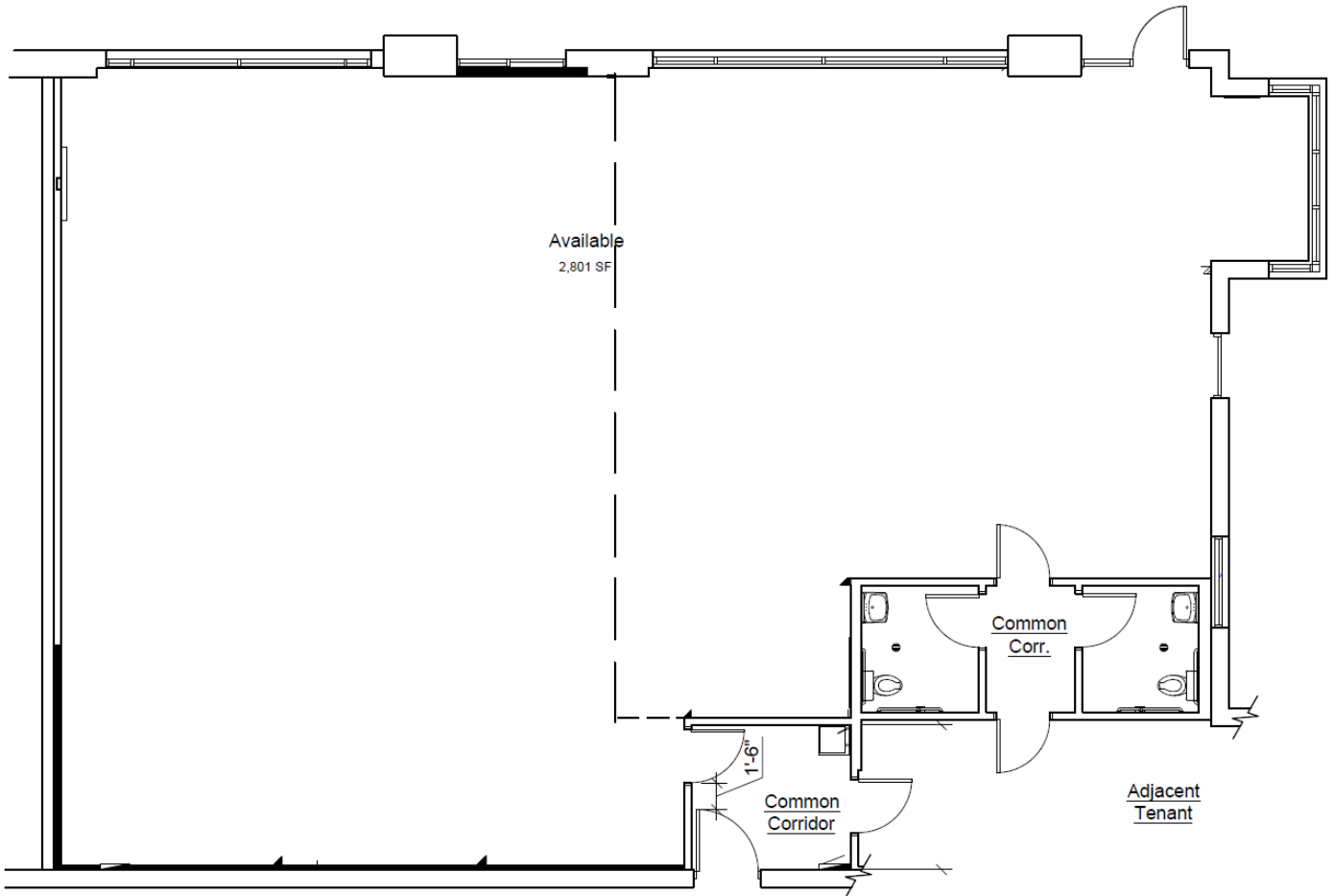
**KATE SCHROEDER**  
Broker / Associate  
(262) 765-9331 (mobile)  
[kate.schroeder@luthergrp.com](mailto:kate.schroeder@luthergrp.com)



**LUTHER GROUP**  
780 ELM GROVE ROAD  
SUITE 120  
ELM GROVE, WI 53122  
(414) 979-1001  
[www.luthergrp.com](http://www.luthergrp.com)

# SITE PLAN & PARKING

*Harmonee Ave  
& Underwood Ave  
Wauwatosa, Wisconsin*



For more information, please contact:

**ANDY FISHLER, MBA, CCIM**  
Principal  
(414) 699-1637 (mobile)  
[afishler@luthergrp.com](mailto:afishler@luthergrp.com)

**KATE SCHROEDER**  
Broker / Associate  
(262) 765-9331 (mobile)  
[kate.schroeder@luthergrp.com](mailto:kate.schroeder@luthergrp.com)



**LUTHER GROUP**  
780 ELM GROVE ROAD  
SUITE 120  
ELM GROVE, WI 53122  
(414) 979-1001  
[www.luthergrp.com](http://www.luthergrp.com)

# AREA PARKING MAP

*Harmonee Ave  
& Underwood Ave  
Wauwatosa, Wisconsin*



## Wauwatosa Village Public Parking Lots

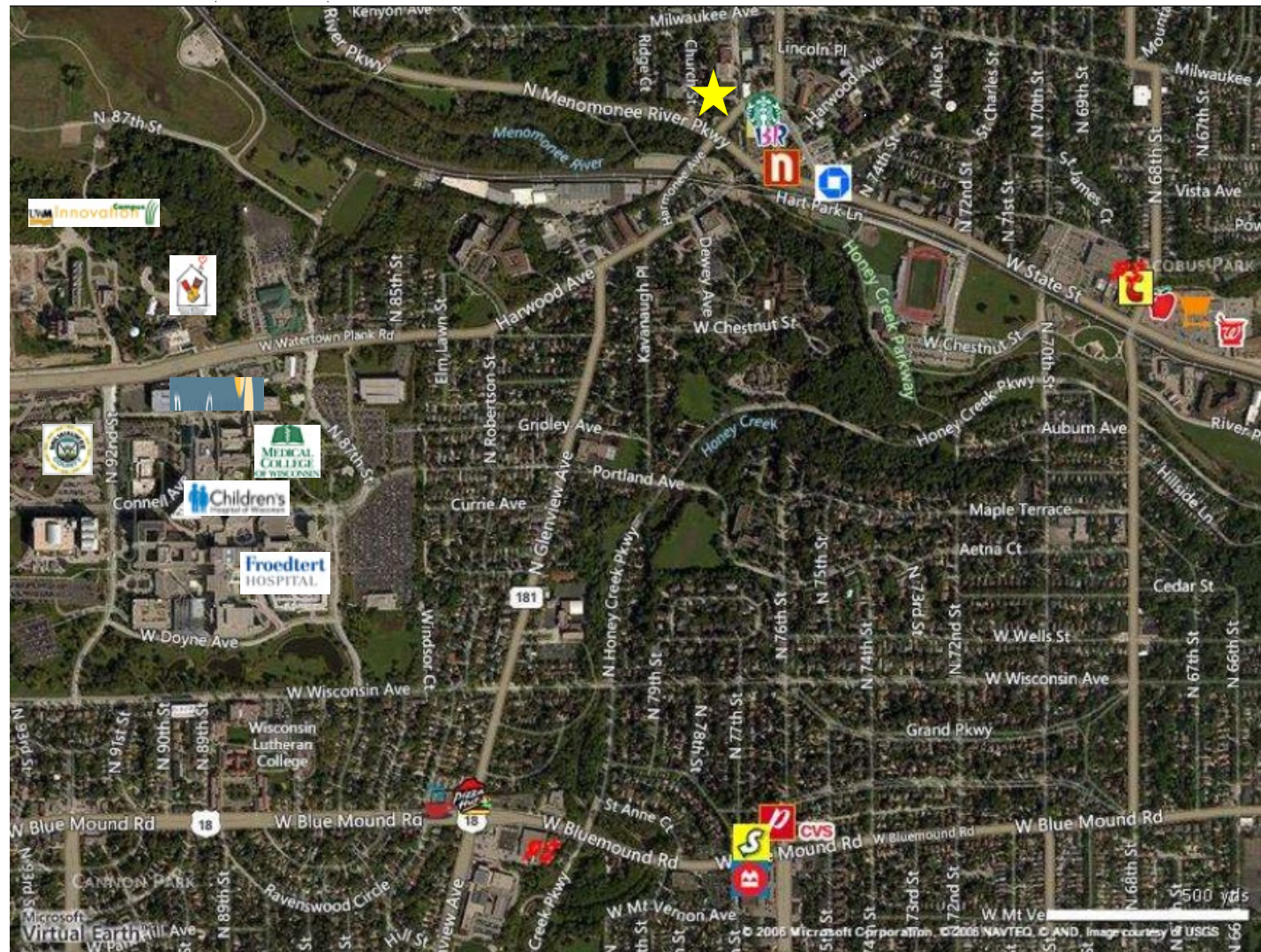
- |                            |                  |
|----------------------------|------------------|
| 1. Hart's Mill Parking Lot | = 76 Spaces      |
| 2. Red Store Lot           | = 142 Spaces     |
| 3. Blanchard St. Lot       | = 101 Spaces     |
| 4. State Street Station    | = 85 Spaces      |
| 5. Harmonee Square         | = 44 Spaces      |
| 6. Adjacent Street Parking | = 20 – 30 Spaces |

**Total Public Parking Available = 468 - 478 Spaces**



# AERIAL MAP

*Harmonee Ave  
& Underwood Ave  
Wauwatosa, Wisconsin*



- Only ½ mile to the Milwaukee Regional Medical Center (MRMC), home to a consortium of 6 healthcare institutions including Froedtert Hospital, Children's Hospital of Wisconsin, The Medical College of Wisconsin, the Blood Center of Wisconsin, Curative Care Network, and Milwaukee County Behavioral Health. Together these entities form the largest academic health care cluster in Southeast Wisconsin, employing more than 15,000 people and having an annual economic impact of over \$3.5 billion.
- Within one mile to the Milwaukee County Research Park (GE Healthcare Headquarters) and UWM Innovation Research Park.
- Within one-third mile to the central Village of Wauwatosa



**BROKER DISCLOSURE TO NON-RESIDENTIAL CUSTOMERS**

1 Prior to negotiating on your behalf the Broker must provide you the following disclosure statement:

2 **BROKER DISCLOSURE TO CUSTOMERS**

3 You are a customer of the broker. The broker is either an agent of another party in the transaction or a subagent of another broker  
4 who is the agent of another party in the transaction. The broker, or a salesperson acting on behalf of the broker, may provide  
5 brokerage services to you. Whenever the broker is providing brokerage services to you, the broker owes you, the customer, the  
6 following duties:

- 7 ■ The duty to provide brokerage services to you fairly and honestly.
- 8 ■ The duty to exercise reasonable skill and care in providing brokerage services to you.
- 9 ■ The duty to provide you with accurate information about market conditions within a reasonable time if you request it, unless  
10 disclosure of the information is prohibited by law.
- 11 ■ The duty to disclose to you in writing certain material adverse facts about a property, unless disclosure of the information is  
12 prohibited by law (See Lines 47-55).
- 13 ■ The duty to protect your confidentiality. Unless the law requires it, the broker will not disclose your confidential information or the  
14 confidential information of other parties (See Lines 22-39).
- 15 ■ The duty to safeguard trust funds and other property the broker holds.
- 16 ■ The duty, when negotiating, to present contract proposals in an objective and unbiased manner and disclose the advantages and  
17 disadvantages of the proposals.

18 Please review this information carefully. A broker or salesperson can answer your questions about brokerage services, but if you  
19 need legal advice, tax advice, or a professional home inspection, contact an attorney, tax advisor, or home inspector.

20 This disclosure is required by section 452.135 of the Wisconsin statutes and is for information only. It is a plain-language summary of  
21 a broker's duties to a customer under section 452.133 (1) of the Wisconsin statutes.

22 **CONFIDENTIALITY NOTICE TO CUSTOMERS**

23 **BROKER WILL KEEP CONFIDENTIAL ANY INFORMATION GIVEN TO BROKER IN CONFIDENCE, OR ANY INFORMATION  
24 OBTAINED BY BROKER THAT HE OR SHE KNOWS A REASONABLE PERSON WOULD WANT TO BE KEPT CONFIDENTIAL,  
25 UNLESS THE INFORMATION MUST BE DISCLOSED BY LAW OR YOU AUTHORIZE THE BROKER TO DISCLOSE PARTICULAR  
26 INFORMATION. A BROKER SHALL CONTINUE TO KEEP THE INFORMATION CONFIDENTIAL AFTER BROKER IS NO LONGER  
27 PROVIDING BROKERAGE SERVICES TO YOU.**

28 THE FOLLOWING INFORMATION IS REQUIRED TO BE DISCLOSED BY LAW:

- 29 1. MATERIAL ADVERSE FACTS, AS DEFINED IN SECTION 452.01 (5g) OF THE WISCONSIN STATUTES (SEE LINES 47-55).
  - 30 2. ANY FACTS KNOWN BY THE BROKER THAT CONTRADICT ANY INFORMATION INCLUDED IN A WRITTEN INSPECTION  
31 REPORT ON THE PROPERTY OR REAL ESTATE THAT IS THE SUBJECT OF THE TRANSACTION.
- 32 TO ENSURE THAT THE BROKER IS AWARE OF WHAT SPECIFIC INFORMATION YOU CONSIDER CONFIDENTIAL, YOU MAY LIST  
33 THAT INFORMATION BELOW (SEE LINES 35-36). AT A LATER TIME, YOU MAY ALSO PROVIDE THE BROKER WITH OTHER  
34 INFORMATION YOU CONSIDER TO BE CONFIDENTIAL.

35 **CONFIDENTIAL INFORMATION:** \_\_\_\_\_

36  
37 **NON-CONFIDENTIAL INFORMATION** (The following information may be disclosed by Broker): \_\_\_\_\_

38  
39 *(INSERT INFORMATION YOU AUTHORIZE THE BROKER TO DISCLOSE SUCH AS FINANCIAL QUALIFICATION INFORMATION.)*

40 **CONSENT TO TELEPHONE SOLICITATION**

41 I/We agree that the Broker and any affiliated settlement service providers (for example, a mortgage company or title company) may  
42 call our/my home or cell phone numbers regarding issues, goods and services related to the real estate transaction until I/we  
43 withdraw this consent in writing. **List Home/Cell Numbers:** \_\_\_\_\_

44 **SEX OFFENDER REGISTRY**

45 *Notice: You may obtain information about the sex offender registry and persons registered with the registry by contacting the  
46 Wisconsin Department of Corrections on the Internet at: <http://offender.doc.state.wi.us/public/> or by phone at 608-240-5830.*

47 **DEFINITION OF MATERIAL ADVERSE FACTS**

48 A "material adverse fact" is defined in Wis. Stat. § 452.01(5g) as an adverse fact that a party indicates is of such significance, or that  
49 is generally recognized by a competent licensee as being of such significance to a reasonable party, that it affects or would affect  
50 the party's decision to enter into a contract or agreement concerning a transaction or affects or would affect the party's decision  
51 about the terms of such a contract or agreement. An "adverse fact" is defined in Wis. Stat. § 452.01(1e) as a condition or occurrence  
52 that a competent licensee generally recognizes will significantly and adversely affect the value of the property, significantly reduce  
53 the structural integrity of improvements to real estate, or present a significant health risk to occupants of the property; or information  
54 that indicates that a party to a transaction is not able to or does not intend to meet his or her obligations under a contract or  
55 agreement made concerning the transaction.

No representation is made as to the legal validity of any provision or the adequacy of any provision in any specific transaction.  
Copyright 2007 by Wisconsin REALTORS® Association