

RETAIL / OFFICE REDEVELOPMENT

7954 Harwood Avenue /
Watertown Plank
Wauwatosa, Wisconsin

PROPERTY FEATURES

- Close proximity to Milwaukee Regional Medical Center & Wauwatosa Village District
- Located in one of Wisconsin's Hottest and most desirable markets
- Over 15,600 daytime employees within 1 mile
- Great visibility from Harwood Avenue / Watertown Plank & Glenview / 84th St.
- Located at Controlled Intersection with 2 points of Ingress / Egress
- Plans to redevelop existing building
- High traffic – approx. 15,000 Cars per day
- “Very Walkable” location – Walk Score of 79



BUILDING FEATURES

BUILDING SIZE	9,050 SF
AVAILABLE SPACE	1,900 SF – Garden Level Retail
LOT SIZE	.56 AC
ZONING	C-2 General Commercial
PARKING	30 stalls + Street Parking
LEASE RATE	\$19.00 / SF NNN
NET EXPENSES	Est. \$6.87 / SF

DEMOGRAPHICS

MILES FROM SITE	1 MILE	2 MILES	3 MILES
AVG HH INCOME	\$87,878	\$72,052	\$58,797
POPULATION	14,354	64,816	156,813
DAYTIME EMPLOYEES	15,636	50,836	101,676
# OF HOUSEHOLDS	6,375	28,661	66,811

For more information, please contact:

ANDY FISHLER, MBA, CCIM
Vice President
(414) 979-1001
(414) 699-1637 [mobile]
afishler@luthergrp.com

KATE SCHROEDER
Associate
(414) 979-1001
kate.schroeder@luthergrp.com

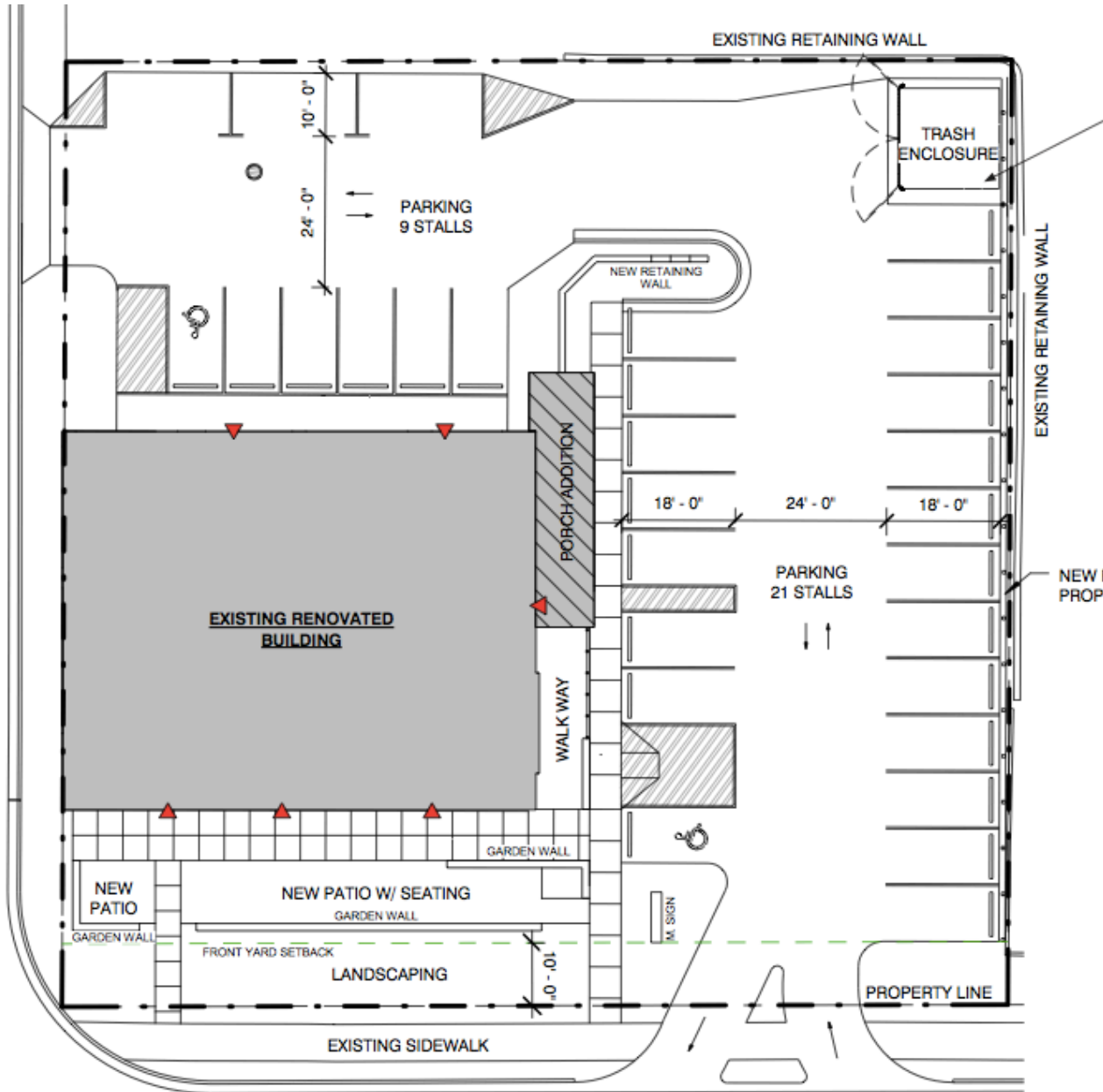


LUTHER GROUP
780 ELM GROVE ROAD
SUITE 120
ELM GROVE, WI 53122
(414) 979-1001
www.luthergrp.com

SITE PLAN

7954 Harwood Avenue /
Watertown Plank
Waunatosa, Wisconsin

GLENVIEW PLACE

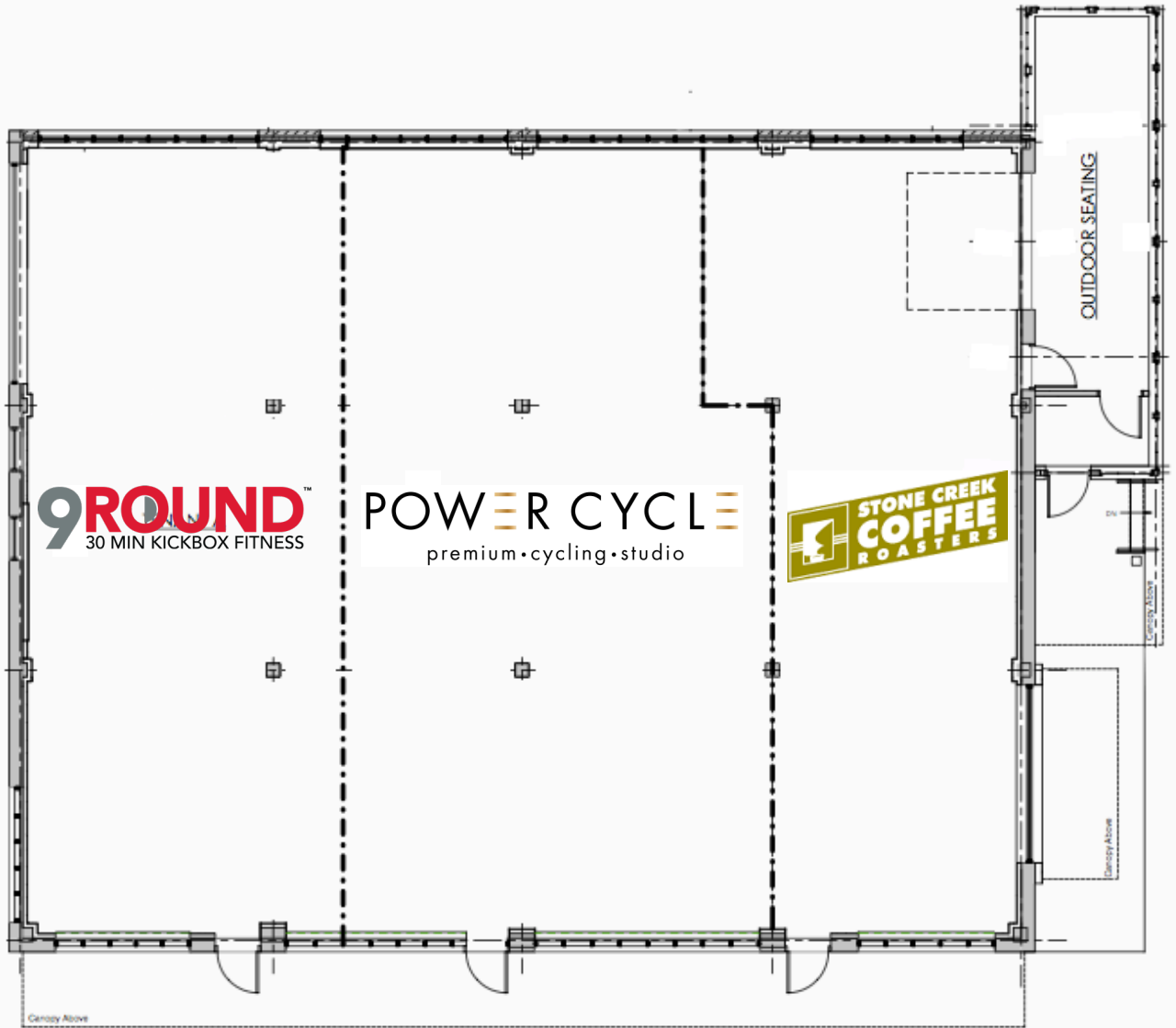


HARWOOD AVE



FLOOR PLANS – 1ST FLOOR

7954 Harwood Avenue /
Watertown Plank
Waunatosa, Wisconsin

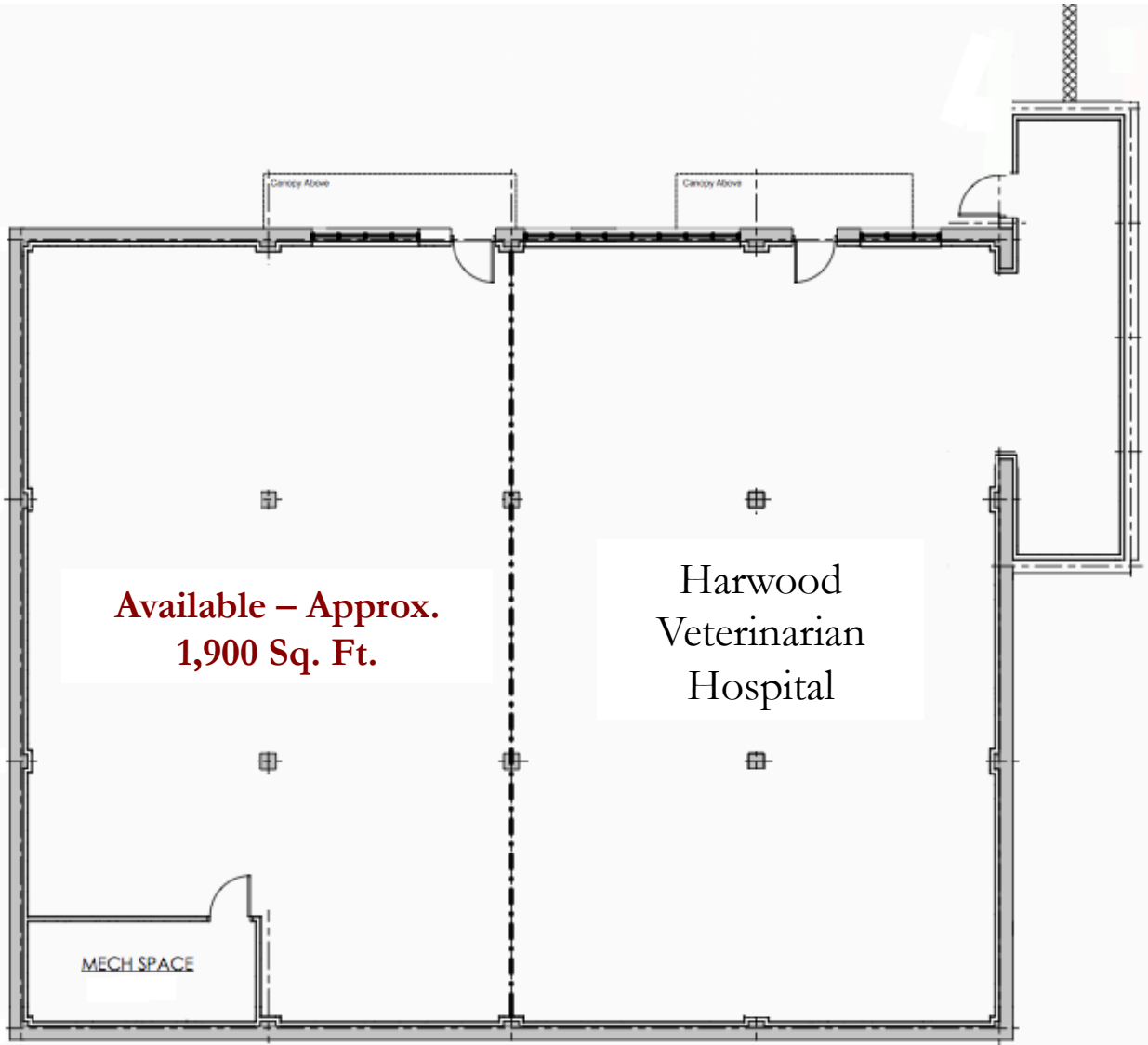


1st Floor Retail – 4,400 SF



FLOOR PLANS – GARDEN LEVEL

7954 Harwood Avenue /
Watertown Plank
Waunatosa, Wisconsin



Garden Level – 4,650 Sq. Ft.



CONCEPTUAL RENDERINGS

7954 Harwood Avenue /
Watertown Plank
Waunatosa, Wisconsin

P
R
O
P
O
S
E
D

E
L
E
V
A
T
I
O
N
S

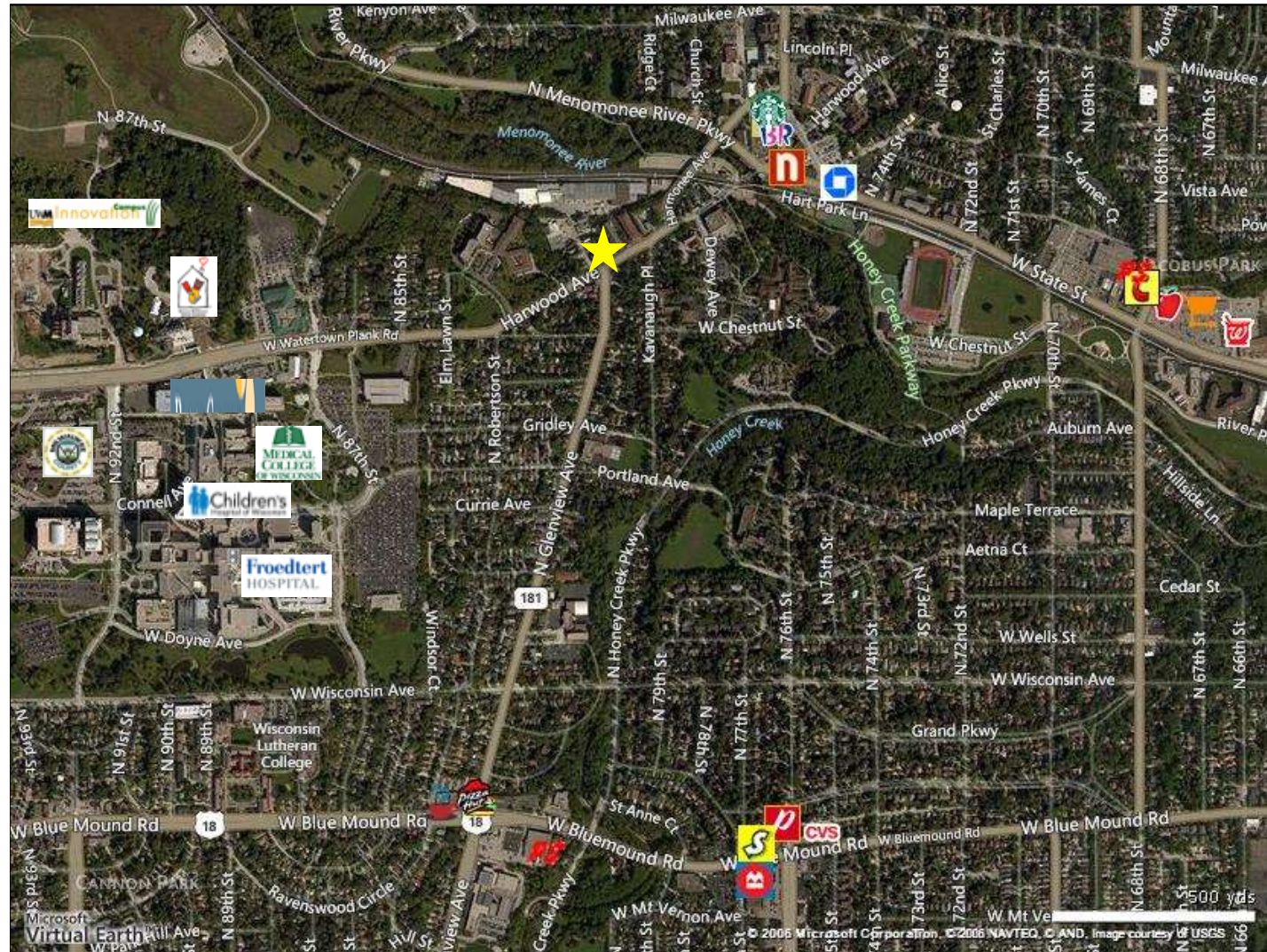


7954 HARWOOD



AERIAL MAP

7954 Harwood Avenue /
Watertown Plank
Wauwatosa, Wisconsin



- Within one-third mile to the Milwaukee Regional Medical Center (MRMC), home to a consortium of 6 healthcare institutions including Froedtert Hospital, Children's Hospital of Wisconsin, The Medical College of Wisconsin, the Blood Center of Wisconsin, Curative Care Network, and Milwaukee County Behavioral Health. Together these entities form the largest academic health care cluster in Southeast Wisconsin, employing more than 15,000 people and having an annual economic impact of over \$3.5 billion.
- Within one mile to the Milwaukee County Research Park (GE Healthcare Headquarters) and UWM Innovation Research Park.
- Within one-third mile to the central Village of Wauwatosa



BROKER DISCLOSURE TO NON-RESIDENTIAL CUSTOMERS

1 Prior to negotiating on your behalf the Broker must provide you the following disclosure statement:

2 **BROKER DISCLOSURE TO CUSTOMERS**

3 You are a customer of the broker. The broker is either an agent of another party in the transaction or a subagent of another broker
4 who is the agent of another party in the transaction. The broker, or a salesperson acting on behalf of the broker, may provide
5 brokerage services to you. Whenever the broker is providing brokerage services to you, the broker owes you, the customer, the
6 following duties:

- 7 ■ The duty to provide brokerage services to you fairly and honestly.
- 8 ■ The duty to exercise reasonable skill and care in providing brokerage services to you.
- 9 ■ The duty to provide you with accurate information about market conditions within a reasonable time if you request it, unless
10 disclosure of the information is prohibited by law.
- 11 ■ The duty to disclose to you in writing certain material adverse facts about a property, unless disclosure of the information is
12 prohibited by law (**See Lines 47-55**).
- 13 ■ The duty to protect your confidentiality. Unless the law requires it, the broker will not disclose your confidential information or the
14 confidential information of other parties (**See Lines 22-39**).
- 15 ■ The duty to safeguard trust funds and other property the broker holds.
- 16 ■ The duty, when negotiating, to present contract proposals in an objective and unbiased manner and disclose the advantages and
17 disadvantages of the proposals.

18 Please review this information carefully. A broker or salesperson can answer your questions about brokerage services, but if you
19 need legal advice, tax advice, or a professional home inspection, contact an attorney, tax advisor, or home inspector.

20 This disclosure is required by section 452.135 of the Wisconsin statutes and is for information only. It is a plain-language summary of
21 a broker's duties to a customer under section 452.133 (1) of the Wisconsin statutes.

22 **CONFIDENTIALITY NOTICE TO CUSTOMERS**

23 **BROKER WILL KEEP CONFIDENTIAL ANY INFORMATION GIVEN TO BROKER IN CONFIDENCE, OR ANY INFORMATION**
24 **OBTAINED BY BROKER THAT HE OR SHE KNOWS A REASONABLE PERSON WOULD WANT TO BE KEPT CONFIDENTIAL,**
25 **UNLESS THE INFORMATION MUST BE DISCLOSED BY LAW OR YOU AUTHORIZE THE BROKER TO DISCLOSE PARTICULAR**
26 **INFORMATION. A BROKER SHALL CONTINUE TO KEEP THE INFORMATION CONFIDENTIAL AFTER BROKER IS NO LONGER**
27 **PROVIDING BROKERAGE SERVICES TO YOU.**

28 THE FOLLOWING INFORMATION IS REQUIRED TO BE DISCLOSED BY LAW:

- 29 1. MATERIAL ADVERSE FACTS, AS DEFINED IN SECTION 452.01 (5g) OF THE WISCONSIN STATUTES (**SEE LINES 47-55**).
 - 30 2. ANY FACTS KNOWN BY THE BROKER THAT CONTRADICT ANY INFORMATION INCLUDED IN A WRITTEN INSPECTION
31 REPORT ON THE PROPERTY OR REAL ESTATE THAT IS THE SUBJECT OF THE TRANSACTION.
- 32 TO ENSURE THAT THE BROKER IS AWARE OF WHAT SPECIFIC INFORMATION YOU CONSIDER CONFIDENTIAL, YOU MAY LIST
33 THAT INFORMATION BELOW (**SEE LINES 35-36**). AT A LATER TIME, YOU MAY ALSO PROVIDE THE BROKER WITH OTHER
34 INFORMATION YOU CONSIDER TO BE CONFIDENTIAL.

35 **CONFIDENTIAL INFORMATION:** _____

36 _____

37 **NON-CONFIDENTIAL INFORMATION** (The following information may be disclosed by Broker): _____

38 _____

39 *(INSERT INFORMATION YOU AUTHORIZE THE BROKER TO DISCLOSE SUCH AS FINANCIAL QUALIFICATION INFORMATION.)*

40 **CONSENT TO TELEPHONE SOLICITATION**

41 I/We agree that the Broker and any affiliated settlement service providers (for example, a mortgage company or title company) may
42 call our/my home or cell phone numbers regarding issues, goods and services related to the real estate transaction until I/we
43 withdraw this consent in writing. **List Home/Cell Numbers:** _____

44 **SEX OFFENDER REGISTRY**

45 *Notice: You may obtain information about the sex offender registry and persons registered with the registry by contacting the*
46 *Wisconsin Department of Corrections on the Internet at: <http://offender.doc.state.wi.us/public/> or by phone at 608-240-5830.*

47 **DEFINITION OF MATERIAL ADVERSE FACTS**

48 A "material adverse fact" is defined in Wis. Stat. § 452.01(5g) as an adverse fact that a party indicates is of such significance, or that
49 is generally recognized by a competent licensee as being of such significance to a reasonable party, that it affects or would affect
50 the party's decision to enter into a contract or agreement concerning a transaction or affects or would affect the party's decision
51 about the terms of such a contract or agreement. An "adverse fact" is defined in Wis. Stat. § 452.01(1e) as a condition or occurrence
52 that a competent licensee generally recognizes will significantly and adversely affect the value of the property, significantly reduce
53 the structural integrity of improvements to real estate, or present a significant health risk to occupants of the property; or information
54 that indicates that a party to a transaction is not able to or does not intend to meet his or her obligations under a contract or
55 agreement made concerning the transaction.

No representation is made as to the legal validity of any provision or the adequacy of any provision in any specific transaction.

Copyright 2007 by Wisconsin REALTORS® Association