

## Category Cable



Category 6A	
REVConnect CAT6A Premium, CMR	10GXS12
REVConnect CAT6A Premium, CMP	10GXS13
REVConnect CAT6A Enhanced, CMR	10GXW12
REVConnect CAT6A Enhanced, CMP	10GXW13
DataConnect CAT6A Stds-compliant, CMR	DAUR
DataConnect CAT6A Stds-compliant, CMP	DAUP
REVConnect CAT6A Shielded, CMR	10GXW52
REVConnect CAT6A Shielded, CMP	10GXW53
Category 6	
REVConnect CAT6 Enhanced, CMR	2412
REVConnect CAT6 Enhanced, CMP	2413
DataConnect CAT6 Stds-compliant, CMR	D6UR
DataConnect CAT6 Stds-compliant, CMP	D6UP
REVConnect CAT6 Shielded, CMR	2412FS
REVConnect CAT6 Shielded, CMP	2413FS
Category 5e	
REVConnect CAT5e Enhanced, CMR	1212
REVConnect CAT5e Enhanced, CMP	1213
DataConnect CAT5e Stds-compliant, CMR	1583A
DataConnect CAT5e Stds-compliant, CMP	1585A
REVConnect CAT5e Shielded, CMR	1212F
REVConnect CAT5e Shielded, CMP	1213F

Refer to catalog for color and put-up codes.

## Mohawk Cable

Category 6A	White	Blue
XSD CAT6A Stds-compliant, CMR	M59224	M59222
XSD CAT6A Stds-compliant, CMP	M59233	M59235
Category 6	White	Blue
6LAN CAT6 Stds-compliant, CMR	M58291	M58292
6LAN CAT6 Stds-compliant, CMP	M58280	M58281
Category 5e	White	Blue
5eLAN CAT5e Stds-compliant, CMR	M57554	M57553
5eLAN CAT5e Stds-compliant, CMP	M57547	M57546

Other colors available.



## REVConnect Modular Connectors

	10GX	CAT6+	CAT5E
Gray	RVAMJKUGY-S1	RV6MJKUGY-S1	RV5MJKUGY-S1
Almond	RVAMJKUAL-S1	RV6MJKUAL-S1	RV5MJKUAL-S1
Electrical White	RVAMJKUEW-S1	RV6MJKUEW-S1	RV5MJKUEW-S1
Black	RVAMJKUBK-S1	RV6MJKUBK-S1	RV5MJKUBK-S1
Ivory	RVAMJKUIV-S1	RV6MJKUIV-S1	RV5MJKUIV-S1
Orange	RVAMJKUOR-S1	RV6MJKUOR-S1	RV5MJKUOR-S1
Red	RVAMJKURD-S1	RV6MJKURD-S1	RV5MJKURD-S1
Yellow	RVAMJKUYL-S1	RV6MJKUYL-S1	RV5MJKUYL-S1
Green	RVAMJKUGN-S1	RV6MJKUGN-S1	RV5MJKUGN-S1
Blue	RVAMJKUBL-S1	RV6MJKUBL-S1	RV5MJKUBL-S1
Purple	RVAMJKUPR-S1	RV6MJKUPR-S1	RV5MJKUPR-S1
Brown	RVAMJKUBN-S1	RV6MJKUBN-S1	RV5MJKUBN-S1
Orange, TIA 606	RVAMJKUTO-S1	RV6MJKUTO-S1	RV5MJKUTO-S1
Red, TIA 606	RVAMJKUTR-S1	RV6MJKUTR-S1	RV5MJKUTR-S1
Yellow, TIA 606	RVAMJKUTY-S1	RV6MJKUTY-S1	RV5MJKUTY-S1
Green, TIA 606	RVAMJKUTG-S1	RV6MJKUTG-S1	RV5MJKUTG-S1
Blue, TIA 606	RVAMJKUTB-S1	RV6MJKUTB-S1	RV5MJKUTB-S1
Purple, TIA 606	RVAMJKUTP-S1	RV6MJKUTP-S1	RV5MJKUTP-S1
Brown, TIA 606	RVAMJKUTN-S1	RV6MJKUTN-S1	RV5MJKUTN-S1
Shielded Jack	RVAMJKSME-S1	RV6MJKSME-S1	RV5MJKSME-S1
UTP Plug	RVAFPUBK-S1	-	-
STP Plug	RVAFPSME-S1	-	-

Single packs shown. All parts available in bulk packaging of 24 jacks (replace S1 with B24).

## Modular Patch Cords



	Blue	Gray	White	Black	Green	Yellow
10GX Patch Cord, Bonded-Pair, 4-pair, 24 AWG Solid, T568A/B-T568A/B, CMR						
7 ft (2.1 m)	CA21106007	CA21108007	CA21109007	CA21100007	CA21105007	CA21104007
xxx*	CA21106xxx	CA21108xxx	CA21109xxx	CA21100xxx	CA21105xxx	CA21104xxx
CAT6+ Patch Cord, Bonded-Pair, 4-pair, 24 AWG Solid, T568A/B-T568A/B, CMR						
7 ft (2.1 m)	C601106007	C601108007	C601109007	C601100007	C601105007	C601104007
xxx*	C601106xxx	C601108xxx	C601109xxx	C601100xxx	C601105xxx	C601104xxx
CAT5E Patch Cord, Bonded-Pair, 4-pair, 24 AWG Solid, T568A/B-T568A/B, CMR						
7 ft (2.1 m)	C501106007	C501108007	C501109007	C501100007	C501105007	C501104007
xxx*	C501106xxx	C501108xxx	C501109xxx	C501100xxx	C501105xxx	C501104xxx

\*xxx represents 3-digit length in ft.

10GX, CAT6+ and CAT5E patch cords available in 1 ft to 100 ft in increments of 1ft, 105 ft to 250 ft in increments of 5 ft. Other colors available.

## DataConnect Patch Cords

	Blue	Gray	White	Black	Green	Yellow
DataConnect Category 6A Patch Cords, UTP, Nonbonded-Pair, T568A/B, CM						
7 ft (2.1 m)	CA43106007	CA43108007	CA43109007	CA43100007	CA43105007	CA43104007
xxx*	CA43106xxx	CA43108xxx	CA43109xxx	CA43100xxx	CA43105xxx	CA43104xxx
DataConnect Category 6 Patch Cords, UTP, Nonbonded-Pair, T568A/B, CM						
7 ft (2.1 m)	C643106007	C643108007	C643109007	C643100007	C643105007	C643104007
xxx*	C643106xxx	C643108xxx	C643109xxx	C643100xxx	C643105xxx	C643104xxx
DataConnect Category 5e Patch Cords, UTP, Nonbonded-Pair, T568A/B, CM						
7 ft (2.1 m)	C543106007	C543108007	C543109007	C543100007	C543105007	C543104007
xxx*	C543106xxx	C543108xxx	C543109xxx	C543100xxx	C543105xxx	C543104xxx

\*xxx represents 3-digit length in ft.

DataConnect Patch Cords are available in other lengths and colors.

## Small-Diameter Patch Cords



	Blue	Gray	White	Black	Green	Yellow
Simple Patch Cord, Bonded-Pair, 4-Pair, 24 AWG Solid, D568A/B-D568A/B, CMR						
7 ft (2.1 m)	CAD1106007	CAD1108007	CAD1109007	CAD1100007	CAD1105007	CAD1104007
xxx*	CAD1106xxx	CAD1108xxx	CAD1109xxx	CAD1100xxx	CAD1105xxx	CAD1104xxx
CAT6+ Simple Patch Cord, Bonded-Pair, 4-Pair, 24 AWG Solid, D568A/B-D568A/B, CMR						
7 ft (2.1 m)	C6D1106007	C6D1108007	C6D1109007	C6D1100007	C6D1105007	C6D1104007
xxx*	C6D1106xxx	C6D1108xxx	C6D1109xxx	C6D1100xxx	C6D1105xxx	C6D1104xxx

\*xxx represents 3-digit length in ft.

Small-Diameter patch cords available in 1 ft to 50 ft in increments of 1ft. Other colors available.

## REVConnect Preloaded Patch Panels



Category 6A	Black Panels	White Panels
10GX REVConnect Patch Panel 24-port, 1U (Preloaded)	RVAPPF1U24BK	RVAPPF1U24WH
10GX REVConnect Patch Panel 48-port, 2U (Preloaded)	RVAPPF2U48BK	RVAPPF2U48WH
10GX REVConnect Angled Patch Panel 24-port, 1U (Preloaded)	RVAPPA1U24BK	RVAPPA1U24WH
10GX REVConnect Angled Patch Panel 48-port, 2U (Preloaded)	RVAPPA2U48BK	RVAPPA2U48WH
Category 6		
CAT6+ REVConnect Patch Panel 24-port, 1U (Preloaded)	RV6PPF1U24BK	RV6PPF1U24WH
CAT6+ REVConnect Patch Panel 48-port, 2U (Preloaded)	RV6PPF2U48BK	RV6PPF2U48WH
CAT6+ REVConnect Angled Patch Panel 24-port, 1U (Preloaded)	RV6PPA1U24BK	RV6PPA1U24WH
CAT6+ REVConnect Angled Patch Panel 48-port, 2U (Preloaded)	RV6PPA2U48BK	RV6PPA2U48WH
Category 5e		
CAT5E REVConnect Patch Panel 24-port, 1U (Preloaded)	RV5PPF1U24BK	RV5PPF1U24WH
CAT5E REVConnect Patch Panel 48-port, 2U (Preloaded)	RV5PPF2U48BK	RV5PPF2U48WH
CAT5E REVConnect Angled Patch Panel 24-port, 1U (Preloaded)	RV5PPA1U24BK	RV5PPA1U24WH
CAT5E REVConnect Angled Patch Panel 48-port, 2U (Preloaded)	RV5PPA2U48BK	RV5PPA2U48WH

## REVConnect Modular Patch Panels (Empty)

	Black	White
REVConnect Modular Patch Panel 24-port, 1U (Empty)	RVMPFF1U24BK	RVMPFF1U24WH
REVConnect Modular Patch Panel 48-port, 2U (Empty)	RVMPFF2U48BK	RVMPFF2U48WH
REVConnect Angled Modular Patch Panel 24-port, 1U (Empty)	RVMPPA1U24BK	RVMPPA1U24WH
REVConnect Angled Modular Patch Panel 48-port, 2U (Empty)	RVMPPA2U48BK	RVMPPA2U48WH

## KeyConnect Modular Jacks



	10GX	CAT6+	CAT5E
Gray	AX102280	AX101318*	AX101307*
Almond	AX102281	AX101319*	AX101308*
Electrical White	AX102282	AX101320*	AX101309*
Black	AX102283	AX101321*	AX101310*
Ivory	AX103073	AX103076*	AX103079*
Orange	AX104152	AX104189*	AX104182*
Red	AX104153	AX104190*	AX104183*
Yellow	AX104154	AX104191*	AX104184*
Green	AX104155	AX104192*	AX104185*
Blue	AX104156	AX104193*	AX104186*
Purple	AX104157	AX104194*	AX104187*
Brown	AX104158	AX104195*	AX104188*
Orange, TIA 606	AX102284	AX101322	AX101311
Red, TIA 606	AX102285	AX101323	AX101312
Yellow, TIA 606	AX102286	AX101324	AX101313
Green, TIA 606	AX102287	AX101325	AX101314
Blue, TIA 606	AX102288	AX101326	AX101315
Purple, TIA 606	AX102289	AX101327	AX101316
Brown, TIA 606	AX102290	AX101328	AX101317
Shielded Jack	AX104562	AX104596	AX104595

\*Also available in bulk packaging (add -B24 after the part number)

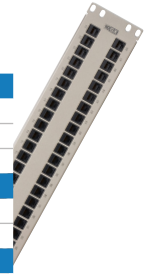


## DataConnect Jacks

	Category 6A	Category 6	Category 5e
Black	DCAMJKUBK-S1	DC6MJKUBK-S1	DC5MJKUBK-S1
Electrical White	DCAMJKUEW-S1	DC6MJKUEW-S1	DC5MJKUEW-S1
Gray	DCAMJKUGY-S1	DC6MJKUGY-S1	DC5MJKUGY-S1
Purple	DCAMJKUPR-S1	DC6MJKUPR-S1	DC5MJKUPR-S1
Red	DCAMJKURD-S1	DC6MJKURD-S1	DC5MJKURD-S1
Yellow	DCAMJKUYL-S1	DC6MJKUYL-S1	DC5MJKUYL-S1
Blue	DCAMJKUBL-S1	DC6MJKUBL-S1	DC5MJKUBL-S1
Green	DCAMJKUGN-S1	DC6MJKUGN-S1	DC5MJKUGN-S1
Ivory	DCAMJKUIV-S1	DC6MJKUIV-S1	DC5MJKUIV-S1
Orange	DCAMJKUOR-S1	DC6MJKUOR-S1	DC5MJKUOR-S1

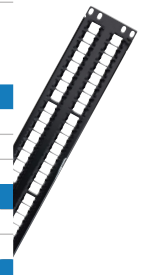
## KeyConnect Preloaded Patch Panels

10GX KeyConnect Patch Panels	
24-Port, 1U, Titanium (Preloaded)	AX103254
48-Port, 2U, Titanium (Preloaded)	AX103256
48-Port, 1U, Titanium (Preloaded)	AX103264
CAT6+ KeyConnect Patch Panels	
24-Port, 1U, Black (Preloaded)	AX103253
48-Port, 2U, Black (Preloaded)	AX103255
CAT5E KeyConnect Patch Panels	
24-Port, 1U, Black (Preloaded)	AX104013
48-Port, 2U, Black (Preloaded)	AX104014



## KeyConnect Modular Patch Panels (Empty)

KeyConnect Modular Patch Panels	
24-port, 1U, Black (Empty)	AX103114
48-port, 2U, Black (Empty)	AX103115
48-port, 1U, Black (Empty)	AX103121
KeyConnect AngleFlex Modular Patch Panels	
24-Port, 1U, AngleFlex, Black (Empty)	AX103248
48-Port, 2U, AngleFlex, Black (Empty)	AX103249
KeyConnect Angled Modular Patch Panels	
24-port, 1U, Angled, Black (Empty)	AX104599
48-port, 2U, Angled, Black (Empty)	AX104601
48-port, 1U, Angled, Black (Empty)	AX104600



Compatible with DataConnect Jacks.

## DataConnect Preloaded Patch Panels

Category 6A	
CAT6A DataConnect Patch Panel, Flat, 24-Port, 1U	DCAPPF1U24BK
CAT6A DataConnect Patch Panel, Flat, 48-Port, 2U	DCAPPF2U48BK
Category 6	
CAT6 DataConnect Patch Panel, Flat, 24-Port, 1U	DC6PPF1U24BK
CAT6 DataConnect Patch Panel, Flat, 48-Port, 2U	DC6PPF2U48BK
Category 5e	
CAT5e DataConnect Patch Panel, Flat, 24-Port, 1U	DC5PPF1U24BK
CAT5e DataConnect Patch Panel, Flat, 48-Port, 2U	DC5PPF2U48BK



## Tools

REVConnect Universal Termination Tool	RVUTT01
Rapid Termination Tool*	AX105566
110 Connecting Tool**	AX100749

\*Use for KeyConnect and DataConnect Modules

\*\*Use for KeyConnect CAT6A Modules



## Workstation Outlets

1-port Faceplate	AX102660
2-port Faceplate	AX102655
4-port Faceplate	AX102249
6-port Faceplate	AX102251
4-port decora Adapter	AX106575-EW
4-port 106 Adapter	AX104124
4-port mod. furn. Adapter	AX102900
2-port Side-Entry Box	AX105353-EW
4-port Side-Entry Box	AX105354-EW



Compatible with REVConnect, KeyConnect and DataConnect Modules.

Part numbers are either Electric White (EW) or White.

For other colors, please refer to catalog.

### Questions?

Contact your local Belden representative,  
call us at 1.800.BELDEN.1 (1.800.235.3361)  
or visit [www.belden.com](http://www.belden.com)