

SPECIALTY FOOD PACKAGING



DELI CATERING



RESTAURANT BAKERY

WINE



WHAT'S INSIDE



PAPER BAGS 4-9

shoppers • take-out & grocery • lunch • bottle & bread • tin tie



A LA CARTE 10-15

coordinated paper shoppers, merchandise bags & boxes



WINE PACKAGING 15-17

coordinated bottle bags, merchandise bags & boxes



PLASTIC BAGS 18-23

catering • take-out • to-go • t-shirt • cello • lip 'n' tape



NON-WOVEN BAGS 24-27

catering • grocery • wine • restaurant to-go



BAKERY 28-31

bakery boxes • cupcake boxes & inserts • wedding cake boxes



TISSUE 32-33

bakery pick-up • white • prints • solids • custom printed



ACCESSORIES 34-35

ribbon • pop-up gift card folders and boxes



CUSTOMIZATION 36-39

hot stamping • ink printing • silk screening • color charts

CUSTOMIZE YOUR PACKAGING!

Put your packaging to work for you. We can personalize your bags, boxes and tissue with the lowest minimums available. Plates and screens are stored for reorders. Let your bags be your walking billboards!

Just look for the **IMPRINT ME!** message. More details on pp.36-39.



POST PRINTING LOW MINIMUMS – QUICK TURNAROUND

HOT STAMPING – OUR MOST POPULAR IMPRINTING PROCESS!

For a metallic image, hot stamping is the best option. A plate is created, then through heat and pressure, the foil is transferred to the surface of the product. We offer a wide range of foil colors including metallic, matte and gloss. See the color selection on page 38.

INK PRINTING

Fast and economical, ink printing is a process through which ink is transferred from a flexible plate to a product's surface. Ink printing is best for 1 or 2-color designs when tight registration is less critical. It's ideal for printing uncoated boxes and bags allowing for better ink absorption. See the color selection on page 39.

SILK SCREEN PRINTING

Ink is transferred to a product through a fine screen. This method is very precise and is ideal for non-woven bags or when multiple colors are needed and registration is critical. It's also a great choice when you have specific PMS colors to match. See the color selection on page 39.



Natural Kraft shopping bags except for Regal and Magnum, are made from 50% recycled fiber.



NATURAL KRAFT

WHITE KRAFT

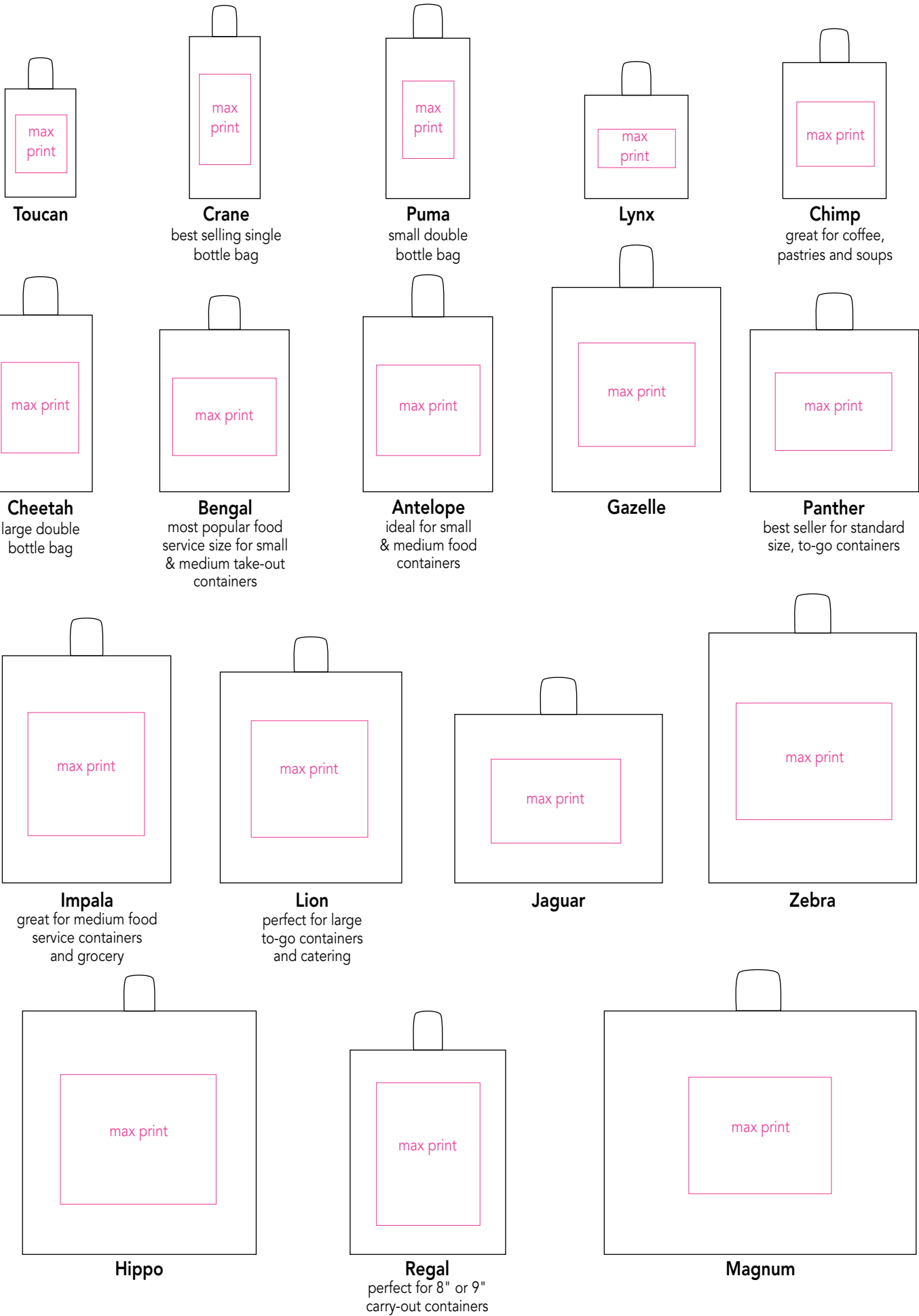
NATURAL KRAFT

size	item#	name	case pack	wt./case	max print	1-9 cases (ea)	10-24 cases (ea)	25+ cases (ea)
5-1/2 x 3-1/4 x 8-3/8	S10490	Toucan	250	20#	4 x 4-1/2			
5-1/2 x 3-1/4 x 12-1/2	S20114	Crane	250	22#	4 x 7			
6-1/2 x 3-1/2 x 12-3/8	S21163	Puma	250	23#	4 x 6			
8 x 4 x 8	S10586	Lynx	250	22#	6 x 3			
8 x 4-3/4 x 10-1/2	S10620	Chimp	250	29#	6 x 5			
8 x 4-3/4 x 13-5/8	S20115	Cheetah	250	31#	6 x 7			
10 x 7 x 12-1/2	S21164	Bengal	250	38#	8 x 6			
10 x 5 x 13-1/2	S10650	Antelope	250	35#	8 x 7			
13 x 6 x 15-3/4	S10660	Gazelle	250	43#	9 x 8			
13 x 7 x 12-1/2	S10373	Panther	250	41#	9 x 6			
13 x 7 x 17-1/2	S10670	Impala	250	48#	9 x 9-1/2			
14 x 9-1/2 x 16-1/4	S10690	Lion	200	50#	9 x 9			
16 x 6 x 13	S10630	Jaguar	250	43#	10 x 6-1/2			
16 x 6 x 19-1/4	S10640	Zebra	200	47#	12 x 9			
18 x 7 x 18-3/4	S10680	Hippo	200	51#	12 x 10			
12 x 9 x 15-3/4	S46065	Regal (65#)	200	33#	8 x 11			
24 x 7-1/4 x 18-3/4	S46066	Magnum (80#)	125	45#	11 x 9			

WHITE KRAFT

size	item#	name	case pack	wt./case	max print	1-9 cases (ea)	10-24 cases (ea)	25+ cases (ea)
5-1/2 x 3-1/4 x 8-3/8	S21064	Toucan	250	20#	4 x 4-1/2			
5-1/2 x 3-1/4 x 12-1/2	S20124	Crane	250	22#	4 x 7			
6-1/2 x 3-1/2 x 12-3/8	S21161	Puma	250	23#	4 x 6			
8 x 4 x 8	S21114	Lynx	250	22#	6 x 3			
8 x 4-3/4 x 10-1/2	S21090	Chimp	250	29#	6 x 5			
10 x 7 x 12-1/2	S21162	Bengal	250	38#	8 x 6			
10 x 5 x 13-1/2	S21170	Antelope	250	35#	8 x 7			
13 x 6 x 15-3/4	S21180	Gazelle	250	43#	9 x 8			
13 x 7 x 12-1/2	S10374	Panther	250	41#	9 x 6			
13 x 7 x 17-1/2	S21190	Impala	250	48#	9 x 9-1/2			
14 x 9-1/2 x 16-1/4	S21220	Lion	200	50#	9 x 9			
16 x 6 x 13	S21150	Jaguar	250	43#	10 x 6-1/2			
16 x 6 x 19-1/4	S21160	Zebra	200	47#	12 x 9			
18 x 7 x 18-3/4	S21200	Hippo	200	51#	12 x 10			
12 x 9 x 15-3/4	S46067	Regal (65#)	200	33#	8 x 11			
24 x 7-1/4 x 18-3/4	S46068	Magnum (80#)	125	45#	11 x 9			

PROPORTIONAL PAPER BAG SIZE CHART



100% RECYCLED KRAFT BAGS

Made in USA



IMPRINT ME!



100% recycled natural kraft with compliant bottom logo print. See below.



reusable and recyclable
90% post-consumer
10% post-industrial fibers
natural • water-based inks
• compostable



RECYCLED NATURAL KRAFT

size	item#	name	case pack	wt./case	max print	1-9 cases (ea)	10-24 cases (ea)	25+ cases (ea)
5-1/2 x 3-1/4 x 8-3/8	S21115	Toucan	250	20#	4 x 4-1/2			
6-1/2 x 3-1/2 x 12-3/8	S21165	Puma	250	23#	4 x 6			
8 x 4-3/4 x 10-1/2	S21116	Chimp	250	29#	6 x 5			
10 x 7 x 12-1/2	S21166	Bengal	250	38#	8 x 6			
10 x 5 x 13-1/2	S21141	Antelope	250	35#	8 x 7			
13 x 7 x 12-1/2	S21142	Panther	250	41#	9 x 6			
16 x 6 x 13	S21117	Jaguar	250	43#	10 x 6-1/2			
14 x 9-1/2 x 16-1/4	S21143	Lion	200	50#	9 x 9			
16 x 6 x 19-1/4	S21118	Zebra	200	47#	12 x 9			

Due to rough texture of kraft material, there may be inconsistencies with ink printing.



100% recycled white kraft with compliant bottom logo print. See below.



reusable and recyclable
50% post-consumer
50% post-industrial fibers
white • water-based inks
• compostable



RECYCLED WHITE KRAFT

size	item#	name	case pack	wt./case	max print	1-9 cases (ea)	10-24 cases (ea)	25+ cases (ea)
5-1/2 x 3-1/4 x 8-3/8	S21146	Toucan	250	20#	4 x 4-1/2			
6-1/2 x 3-1/2 x 12-3/8	S21167	Puma	250	23#	4 x 6			
8 x 4-3/4 x 10-1/2	S21147	Chimp	250	29#	6 x 5			
10 x 5 x 13-1/2	S21148	Antelope	250	35#	8 x 7			
16 x 6 x 13	S21149	Jaguar	250	43#	10 x 6-1/2			

Due to rough texture of kraft material, there may be inconsistencies with ink printing.

PAPER BAGS – GROCERY & TAKE-OUT

Made in USA 

IMPRINT ME!

IMPRINT YOUR LOGO
TO PROMOTE
YOUR BRAND!



40# KRAFT PAPER BAGS, DIE-CUT HANDLES

size	item#	name	case pack	wt./case	max print	1-9 cases (ea)	10-24 cases (ea)	25+ cases (ea)
11 x 6 x 11	S46069	natural kraft	500	29#	7 x 9			
11 x 6 x 11	S46070	white kraft	500	29#	7 x 9			



These self-standing
bags are preferred
for their strength
and great value!



70# KRAFT GROCERY BAGS, FLAT HANDLES

size	item#	name	case pack	wt./case	max print	1-9 cases (ea)	10-24 cases (ea)	25+ cases (ea)
12 x 7 x 17	S46071	natural kraft, handles up	300	49#	8 x 10			
12 x 7 x 14	S46072	natural kraft, handles down	300	43#	8 x 8			

PAPER LUNCH BAGS Made in USA

IMPRINT ME!



WHITE KRAFT

size	item#	case pack	wt./case	max print	1-9 cases	10-24 cases	25+ cases
(4#) 5 x 3-1/8 x 9-5/8	S66010	500	10#	3 x 5			
(6#) 6 x 3-5/8 x 11-1/16	S66011	500	13#	4 x 6			
(12#) 7-1/8 x 4-3/8 x 13-15/16	S66012	500	19#	5 x 8			
(16#) 7-11/16 x 4-7/8 x 16-1/16	S66013	500	22#	5 x 8			

RECYCLED NATURAL KRAFT



size	item#	case pack	wt./case	max print	1-9 cases	10-24 cases	25+ cases
(4#) 5 x 3-1/8 x 9-5/8	S66006	500	10#	3 x 5			
(6#) 6 x 3-5/8 x 11-1/16	S66007	500	13#	4 x 6			
(12#) 7-1/8 x 4-3/8 x 13-15/16	S66008	500	19#	5 x 8			
(16#) 7-11/16 x 4-7/8 x 16-1/16	S66009	500	22#	5 x 8			

BOTTLE & BREAD BAGS Made in USA

IMPRINT ME!



Build your brand by adding your logo!

NATURAL AND WHITE KRAFT

size	item#	color	case pack	wt./case	max print	1-9 cases (ea)	10-24 cases (ea)	25+ cases (ea)
5 x 2 x 18	S20116	natural	1000	28#	12 x 3			
5 x 2 x 18	S20126	white	1000	28#	12 x 3			

PAPER SHOPPING BAGS



IMPRINT ME!



**Earth
Friendly**

Natural Kraft shopping bags are made from 50% recycled fiber.

color	toucan	chimp
Chocolate Brown	S30652	S30653
Apple Green	S30483	S30340
Really Red	S30484	S30370
India Ink	S30485	S30430
Forest Green	S30651	S30530
Lipstick	S30491	S30492

Chocolate	Apple Green	Really Red
India Ink	Forest Green	Lipstick



NATURAL TINTS WITH SHADOW STRIPES

size	item#	name	case pack	wt./case	max print	1-9 cases (ea)	10-24 cases (ea)	25+ cases (ea)
5-1/2 x 3-1/4 x 8-3/8	see chart	toucan	250	20#	4 x 4-1/2			
8 x 4-3/4 x 10-1/2	see chart	chimp	250	29#	6 x 5			

TIN TIE BAGS



IMPRINT ME!



Great for
coffee,
candy or
cookies!

75 gauge polypropylene liner keeps contents fresh

WHITE AND NATURAL KRAFT

size	item#	bag	color	case pack	max print	wt./case	1-9 cases	10-24 cases	25+ cases
3-3/8 x 2-1/2 x 7-3/4	S77244	1/2 lb.	White	100	2-1/2 x 5	3#			
3-3/8 x 2-1/2 x 7-3/4	S77245	1/2 lb.	Natural Kraft	100	2-1/2 x 5	3#			
3-3/8 x 2-1/2 x 7-3/4	S77246	1/2 lb.	White with Window	100	2-1/2 x 1-3/4	3#			
3-3/8 x 2-1/2 x 7-3/4	S77247	1/2 lb.	Natural Kraft with Window	100	2-1/2 x 1-3/4	3#			
4-1/4 x 2-1/2 x 9-3/4	S77248	1 lb.	White	100	3-1/4 x 6	4#			
4-1/4 x 2-1/2 x 9-3/4	S77249	1 lb.	Natural Kraft	100	3-1/4 x 6	4#			
4-1/4 x 2-1/2 x 9-3/4	S77250	1 lb.	White with Window	100	3-1/4 x 2-1/4	4#			
4-1/4 x 2-1/2 x 9-3/4	S77251	1 lb.	Natural Kraft with Window	100	3-1/4 x 2-1/4	4#			
6 x 2-3/4 x 9-1/2	S77252	Cookie	White with Window	100	4-3/4 x 1-1/2	5#			

INTRODUCING A LA CARTE COLLECTIONS

WE STOCK THE ENTIRE LINE!

FRUIT BOWL COLLECTION Made in USA



Shopping Bags – 40% PCW recycled natural kraft.

Box covering and Merchandise Bags – 70% PCW recycled natural kraft.



size	item#	name	case pack	wt./case	1-9 cases	10-24 cases	25+ cases
8 x 4-3/4 x 10-1/2	S20134	shopping bag – small	250	29#			
5-1/2 x 3-1/4 x 12-1/2	S20135	single bottle bag	250	22#			
8 x 4-3/4 x 13-5/8	S20136	large double bottle bag	250	31#			
5 x 2 x 18	S20138	merchandise bag – bottle & bread	1000	28#			
8 x 4-7/8 x 5-1/4	B20140	gable box – medium	100	18#			
9 x 6 x 6	B20141	gable box – large	100	27#			
9 x 7 x 3	B20143	stackable deli box	100	21#			

MARKET FRESH COLLECTION Made in USA



Shopping Bags – 40% PCW recycled natural kraft with compliant bottom logo.

Box covering – 70% PCW recycled natural kraft.



Gable & stackable deli boxes are perfect for boxed lunches!

size	item#	name	case pack	wt./case	1-9 cases	10-24 cases	25+ cases
8 x 4-3/4 x 10-1/2	S20486	shopping bag – small	250	29#			
13 x 7 x 12-1/2	S20487	shopping bag – medium	250	41#			
8 x 4-7/8 x 5-1/4	B20476	gable box – medium	100	18#			
9 x 7 x 4	B20488	stackable deli box	100	25#			

GREEN GARDENS COLLECTION Made in USA

IMPRINT ME!



Shopping Bags – 40% PCW recycled natural kraft with compliant bottom logo.

Box covering – 70% PCW recycled natural kraft.



size	item#	name	case pack	max print	wt./case	1-9 cases (ea)	10-24 cases (ea)	25+ cases (ea)
8 x 4-3/4 x 10-1/2	S20479	shopping bag – small	250	6 x 5	29#			
13 x 7 x 12-1/2	S20481	shopping bag – medium	250	9 x 6	41#			
8 x 4-7/8 x 5-1/4	B20475	gable box – medium	100	6 x 3	18#			
9 x 7 x 4	B20482	stackable deli box	100	*7 x 3	25#			

*max print area for side of box

NEWSPRINT COLLECTION Made in USA



Shopping Bags – 40% PCW recycled natural kraft with compliant bottom logo.

Merchandise Bags – 70% PCW recycled natural kraft with compliant bottom logo.

Box covering – 70% PCW recycled natural kraft.



size	item #	name	case pack	wt./case	1-9 cases	10-24 cases	25+ cases
5-1/2 x 3-1/4 x 8-3/8	S90203	shopping bag – mini	250	20#			
8 x 4-3/4 x 10-1/2	S90204	shopping bag – small	250	29#			
16 x 6 x 13	S90205	shopping bag – large	250	43#			
8 x 4-7/8 x 5-1/4	B41086	gable box – medium	100	18#			
8-1/2 x 11	S66026	merchandise bag – small	1000	44#			
11-1/2 x 3 x 18	S66027	merchandise bag – large	500	25#			

GEO TRIO COLLECTION Made in USA



Shopping Bags – 40% PCW recycled natural kraft with compliant bottom logo.

Box covering – 70% PCW recycled natural kraft.



Treasure Boxes have a one piece auto bottom and attached side wall snap lock lid creating a colorful, vibrant way to pack treats, meals, gifts & more!

size	item #	name	case pack	wt./case	1-9 cases	10-24 cases	25+ cases
5-1/2 x 3-1/4 x 8-3/8	S90199	shopping bag – mini – cubes	250	20#			
8 x 4-3/4 x 10-1/2	S90200	shopping bag – small – dots	250	29#			
8 x 4-3/4 x 10-1/2	S90201	shopping bag – small – zig zag	250	29#			
16 x 6 x 13	S90202	shopping bag – large – zig zag	250	43#			
8 x 4-7/8 x 5-1/4	B41082	gable box – medium – dots	100	18#			
8 x 4-7/8 x 5-1/4	B41083	gable box – medium – zig zag	100	18#			
4 x 4 x 4	B41084	treasure box – small	100	8#			
8 x 5 x 5-1/2	B41085	treasure box – large	100	14#			

NOIR COLLECTION Made in USA

IMPRINT ME!



Shopping Bags – 40% PCW recycled natural kraft with compliant bottom logo.

Box covering – 70% PCW recycled natural kraft.



size	item#	name	case pack	wt./case	max print	1-9 cases (ea)	10-24 cases (ea)	25+ cases (ea)
5-1/2 x 3-1/4 x 8-3/8	S30766	shopping bag – mini	250	20#	4 x 4-1/2			
8 x 4-3/4 x 10-1/2	S30774	shopping bag – small	250	29#	6 x 5			
10 x 5 x 13-1/2	S30785	shopping bag – carry out	250	35#	8 x 7			
13 x 7 x 12-1/2	S30786	shopping bag – medium	250	41#	9 x 6			
16 x 6 x 13	S30781	shopping bag – large	250	43#	10 x 6-1/2			
8 x 4-7/8 x 5-1/4	B20474	gable box – medium	100	18#	6 x 3			
4 x 2-1/2 x 2-1/2	B20473	gable box – mini	100	6#	n/a			
9 x 7 x 4	B30787	stackable deli box	100	25#	*7 x 3			

FOREST GREEN COLLECTION Made in USA

IMPRINT ME!



Shopping Bags – 40% PCW recycled natural kraft with compliant bottom logo.

Merchandise Bags – 70% PCW recycled natural kraft with compliant bottom logo.

Box covering – 70% PCW recycled natural kraft.



size	item#	name	case pack	wt./case	max print	1-9 cases (ea)	10-24 cases (ea)	25+ cases (ea)
5-1/2 x 3-1/4 x 8-3/8	S30651	shopping bag – mini	250	20#	4 x 4-1/2			
8 x 4-3/4 x 10-1/2	S30530	shopping bag – small	250	29#	6 x 5			
5-1/2 x 3-1/4 x 12-1/2	S20145	single bottle bag	250	22#	4 x 7			
8 x 4-3/4 x 13-5/8	S20146	large double bottle bag	250	31#	6 x 7			
5 x 2 x 18	S20148	merchandise bag – bottle & bread	1000	28#	12 x 3			
8 x 4-7/8 x 5-1/4	B20150	gable box – medium	100	18#	6 x 3			
9 x 6 x 6	B20151	gable box – large	100	27#	7 x 4			

REALLY RED COLLECTION Made in USA



Shopping Bags – 40% PCW recycled natural kraft with compliant bottom logo.

Merchandise Bags – 70% PCW recycled natural kraft with compliant bottom logo.

Box covering – 70% PCW recycled natural kraft.



size	item#	name	case pack	wt./case	max print	1-9 cases (ea)	10-24 cases (ea)	25+ cases (ea)
5-1/2 x 3-1/4 x 8-3/8	S30484	shopping bag – mini	250	20#	4 x 4-1/2			
8 x 4-3/4 x 10-1/2	S30370	shopping bag – small	250	29#	6 x 5			
5-1/2 x 3-1/4 x 12-1/2	S20154	single bottle bag	250	22#	4 x 7			
8 x 4-3/4 x 13-5/8	S20155	large double bottle bag	250	31#	6 x 7			
5 x 2 x 18	S20157	merchandise bag – bottle & bread	1000	28#	12 x 3			
8 x 4-7/8 x 5-1/4	B20159	gable box – medium	100	18#	6 x 3			
9 x 6 x 6	B20161	gable box – large	100	27#	7 x 4			
4 x 2-1/2 x 2-1/2	B20349	gable box – mini	100	6#	n/a			
9 x 7 x 3	B20162	stackable deli box	100	21#	*7 x 2			

*max print area for side of box

NATURAL KRAFT COLLECTION Made in USA

IMPRINT ME!



Box Covering – 70% PCW recycled natural kraft.

Brand your
packaging
with your
logo!



IMPRINT ME!



Shopping Bags – 40% PCW recycled natural kraft.



size	item#	name	case pack	wt./case	max print	1-9 cases (ea)	10-24 cases (ea)	25+ cases (ea)
5-1/2 x 3-1/4 x 8-3/8	S10490	shopping bag – mini	250	20#	4 x 4-1/2			
8 x 4-3/4 x 10-1/2	S10620	shopping bag – small	250	29#	6 x 5			
5-1/2 x 3-1/4 x 12-1/2	S20114	single bottle bag	250	22#	4 x 7			
6-1/2 x 3-1/2 x 12-3/8	S21163	small double bottle bag	250	23#	4 x 6			
8 x 4-3/4 x 13-5/8	S20115	large double bottle bag	250	31#	6 x 7			
10 x 5 x 13-1/2	S10650	shopping bag – carry out	250	35#	8 x 7			
10 x 7 x 12-1/2	S21164	shopping bag – wide carry out	250	38#	8 x 6			
13 x 7 x 12-1/2	S10373	shopping bag – medium	250	41#	9 x 6			
14 x 9-1/2 x 16-1/4	S10690	shopping bag – large	200	50#	9 x 9			
5 x 2 x 18	S20116	merchandise bag – bottle & bread	1000	28#	12 x 3			
4 x 2-1/2 x 2-1/2	B20118	gable box – mini	100	6#	n/a			
8 x 4-7/8 x 5-1/4	B20119	gable box – medium	100	18#	6 x 3			
9 x 6 x 6	B20121	gable box – large	100	27#	7 x 4			
8 x 4-7/8 x 3-1/2	B20122	stackable meal box	100	14#	* 6 x 3-1/2			
9 x 7 x 3	B20354	stackable deli box	100	21#	** 7 x 2			
3-1/2 x 3-1/2 x 13-1/2	B20123	single bottle box	100	17#	11 x 2			

*max print area for lid of box

**max print area for side of box

WHITE KRAFT COLLECTION

Made in USA 

IMPRINT ME!



Recyclable white kraft.



size	item#	name	case pack	wt./case	max print	1-9 cases (ea)	10-24 cases (ea)	25+ cases (ea)
5-1/2 x 3-1/4 x 8-3/8	S21064	shopping bag – mini	250	20#	4 x 4-1/2			
8 x 4-3/4 x 10-1/2	S21090	shopping bag – small	250	29#	6 x 5			
5-1/2 x 3-1/4 x 12-1/2	S20124	single bottle bag	250	22#	4 x 7			
6-1/2 x 3-1/2 x 12-3/8	S21161	small double bottle bag	250	23#	4 x 6			
10 x 5 x 13-1/2	S21170	shopping bag – carry out	250	35#	8 x 7			
10 x 7 x 12-1/2	S21162	shopping bag – wide carry out	250	38#	8 x 6			
13 x 7 x 12-1/2	S10374	shopping bag – medium	250	41#	9 x 6			
14 x 9-1/2 x 16-1/4	S21220	shopping bag – large	200	50#	9 x 9			
5 x 2 x 18	S20126	merchandise bag – bottle & bread	1000	28#	12 x 3			
4 x 2-1/2 x 2-1/2	B20128	gable box – mini	100	6#	n/a			
8 x 4-7/8 x 5-1/4	B20129	gable box – medium	100	18#	6 x 3			
9 x 6 x 6	B20131	gable box – large	100	27#	7 x 4			

WINE PACKAGING

Made in USA 



Shopping Bags – 40% PCW recycled natural kraft with bottom logo.

Merchandise Bags – 70% PCW recycled natural kraft with bottom logo.



Great for wineries & BYOB restaurants!

GRAPE COLLECTION

size	item#	name	case pack	wt./case	1-9 cases	10-24 cases	25+ cases
5-1/2 x 3-1/4 x 12-1/2	S20181	single bottle bag	250	22#			
8 x 4-3/4 x 13-5/8	S20182	large double bottle bag	250	31#			
5 x 2 x 18	S20185	merchandise bag – bottle and bread	1000	28#			



Shopping Bags – 50% PCW recycled white kraft with compliant bottom logo.

Merchandise Bags – 40% PCW recycled white kraft with compliant bottom logo.

Box covering – 40% PCW recycled white kraft.



BEAUJOLAIS COLLECTION

size	item #	name	case pack	wt./case	1-9 cases	10-24 cases	25+ cases
5-1/2 x 3-1/4 x 12-1/2	S20483	single bottle bag	250	22#			
5 x 2 x 18	S20484	merchandise bag – grape	1000	28#			
5 x 2 x 18	S20485	merchandise bag – words	1000	28#			
8 x 4-7/8 x 5-1/4	B20477	gable box – medium	100	18#			



Shopping Bags – 40% PCW recycled natural kraft with compliant bottom logo.

Merchandise Bags – 70% PCW recycled natural kraft with compliant bottom logo.

Box covering – 70% PCW recycled natural kraft.



NOIR WINERY COLLECTION

size	item #	name	case pack	wt./case	1-9 cases	10-24 cases	25+ cases
5-1/2 x 3-1/4 x 12-1/2	S30788	single bottle bag	250	22#			
6-1/2 x 3-1/2 x 12-3/8	S30789	small double bottle bag	250	23#			
5 x 2 x 18	S30790	merchandise bag – bottle and bread	1000	28#			
3-1/2 x 3-1/2 x 13-1/2	B30791	single bottle box	100	17#			

WINE PACKAGING GROUPS Made in USA

IMPRINT ME! Bags, except Fruit Bowl, may be hot stamped, ink printed and silk screened.

See pp.36-39.



WHITE KRAFT

see p.15



NATURAL KRAFT

see p.14



FOREST GREEN

see p.13



REALLY RED

see p.13



FRUIT BOWL

see pg.10

PLASTIC CATERING AND TAKE-OUT BAGS

BEST SELLING CATERING BAGS!

Our bags can safely and conveniently carry your round catering trays, full trays and half trays!



S40386 Lunch Bag

Holds small salad or sandwich with a drink and chips, small side orders or two small tart boxes. Heat sealed square bottom.



S40377 Roaster

Holds roaster dome, 9" round or rectangle containers, hot food to-go containers with room for side orders or two 10" cake boxes. Cardboard bottom.



S40304 Diner

Holds light 12" cake or pie boxes, three 9" clam shells or four 5" clam shells. Cardboard bottom.



S10367 Large Take-Out Shopper

Shopper for many assorted size containers, disposables, catering accessories and cake boxes. Folded loop handles. Cardboard bottom.



S40378 Heavy Caker

Heavy duty bag. Great for bakeries. Holds 10" and 12" cake or pie boxes, four 9" clam shells or eight 5" clam shells. Cardboard bottom.



S40387 Rounder 16"/18"

Holds 14", 16" or 18" round catering trays and high end party platters with assorted shapes. 14"-16" cake boxes. Also holds cupcake boxes. Cardboard bottom.



S40388 Side by Side

Holds up to eight 9" clam shells or rounds side by side with room for assorted side orders. Cardboard bottom.



S40389 Half Tray

Holds 2 hotel size catering trays (1/2 trays). Can handle high temperature and lots of weight. Holds heavy 12" cake boxes or 14" sheet cake boxes. Extra strong handles. Cardboard bottom.



S40390 Full Tray

Holds up to 2 full catering trays. Can handle high temperature and lots of weight. Extra strong handles. Heat sealed square bottom.

Designed for caterers. Ideal for drop-offs!

WHITE HIGH DENSITY, DIE-CUT HANDLES, CARDBOARD BOTTOM (EXCEPT LUNCH BAG)

size	description	item#	case pack	wt./case	gauge	1-9 cases	10-24 cases	25+ cases
8-1/4 x 6 x 14 x 6	Lunch Bag	S40386	1000	30#	1.75 mil			
12 x 9 x 16 x 9	Roaster	S40377	500	55#	2 mil			
14 x 10 x 14 x 10	Diner	S40304	250	34#	2 mil			

WHITE HIGH DENSITY, FOLDED LOOP HANDLES, CARDBOARD BOTTOM

size	description	item#	case pack	wt./case	gauge	1-9 cases	10-24 cases	25+ cases
12 x 10 x 16 x 10	Large Take-Out Shopper	S10367	250	32#	2 mil			

WHITE HIGH DENSITY, RIGID HANDLES, CARDBOARD BOTTOM

size	description	item#	case pack	wt./case	gauge	1-9 cases	10-24 cases	25+ cases
14 x 10 x 14-3/4 x 10	Heavy Caker	S40378	200	39#	2.25 mil			
18 x 17 x 18 x 17	Rounder 16"/18"	S40387	100	37#	2.5 mil			
19 x 10 x 12 x 10	Side by Side	S40388	200	40#	2.25 mil			

WHITE HIGH DENSITY, SOFT LOOP HANDLES, CARDBOARD BOTTOM (EXCEPT FULL TRAY)

size	description	item#	case pack	wt./case	gauge	1-9 cases	10-24 cases	25+ cases
14 x 11-1/2 x 12 x 11-1/2	Half Tray	S40389	200	37#	3 mil			
22 x 14 x 15-1/4 x 14	Full Tray	S40390	100	21#	3.5 mil			

PLASTIC RESTAURANT TO-GO BAGS



BEST SELLING TO-GO BAG!

- holds up to three 9" food containers
- strong, soft loop handles
- put your logo on this bag – order as few as 1 case!

IMPRINT ME!

WHITE HIGH DENSITY, SOFT LOOP HANDLES, CARDBOARD BOTTOM

size	description	item#	case pack	wt./case	max print	gauge	1-9 cases (ea)	10-24 cases (ea)	25+ cases (ea)
12 x 10 x 12 x 10	Restaurant Take-Out Bag	S46075	250	37#	7 x 5	2.25 mil			



SQUARE BOTTOM T-SHIRT BAG

- heavy gauge stand-up t-shirt bag
- easy loading
- holds up to three 9" containers



WAVE TOP BAG

- easy to use
- holds up to three 9" containers

SQUARE HEAT-SEALED BOTTOM T-SHIRT BAG

size	item#	case pack	wt./case	gauge	1-9 cases	10-24 cases	25+ cases
11-1/2 x 9-1/2 x 16 x 9-1/2	S40391	500	20#	1.5 mil			

WAVE TOP BAG

size	item#	case pack	wt./case	gauge	1-9 cases	10-24 cases	25+ cases
21 x 18 x 10	S40292	500	18#	1.25 mil			

HIGH DENSITY CLEAR SOFT LOOP BAGS

IMPRINT ME!



CLEAR SOFT LOOP HANDLE SHOPPING BAGS (CARDBOARD BOTTOM)

size	item#	case pack	wt./case	gauge	max print	1-9 cases	10-24 cases	25+ cases
8 x 4 x 10 x 4	S20345	250	19#	3 mil				
14 x 10 x 13 x 10	S20348	200	34#	3 mil				

T-SHIRT BAGS



HIGH DENSITY T-SHIRT BAGS – WHITE

size	item#	case pack	wt./case	gauge	1-9 cases	10-24 cases	25+ cases
12 x 7 x 22	S50959	1000	13#	0.5 mil			
12 x 7 x 22 Thank You	S50960	1000	13#	0.5 mil			
14 x 10 x 30	S50961	500	16#	0.7 mil			



Encore bags are made from 25% post consumer recycled material.



SUPER WAVE® BAGS WITH DIE-CUT HANDLE – CLEAR

size	item#	case pack	wt./case	gauge	max print	1-9 cases	10-24 cases	25+ cases
12 x 11 x 4	S24232	250	5#	2 mil	8 x 6			
18 x 15 x 6	S27038	250	12#	2.25 mil	11 x 9			
22 x 18 x 8	S24234	250	17#	2.25 mil	12 x 9			

SUPER WAVE® BAGS WITH DIE-CUT HANDLE – COLORS

size	item#	case pack	wt./case	gauge	max print	1-9 cases	10-24 cases	25+ cases
12 x 11 x 4	see chart	250	5#	2 mil	8 x 6			
18 x 15 x 6	see chart	250	12#	2.25 mil	11 x 9			
22 x 18 x 8	see chart	250	17#	2.25 mil	12 x 9			

color	12 x 11 x 4	18 x 15 x 6	22 x 18 x 8
Purple Grape	S24211	S24217	S24223
Citrus Green	S24212	S24218	S24224
Lagoon Blue	S24215	S24221	S24227
Sizzling Pink	S24216	S24222	S24228

CLEAR CELLO BAGS Made in USA 



Perfect for
cookies,
candies &
snacks!

CLEAR CELLO BAGS (1.2 MIL)

size	item#	case pack	wt./case	1-9 cases	10-24 cases	25+ cases
2-3/4 x 2-1/2 x 9	T10358	100	1#			
3-1/2 x 2 x 7-1/2	T10359	100	1#			
4 x 2-1/2 x 9-1/2	T10360	100	1#			
5 x 3 x 11-1/2	T10361	100	1#			
6 x 3-1/4 x 13-1/2	T10362	100	1#			

LIP 'N' TAPE BAGS Made in USA 



LIP 'N' TAPE BAGS (1.2 MIL)

size	item#	case pack	wt./case	1-9 cases	10-24 cases	25+ cases
4-3/8 x 5-3/4	S10704	100	1#			
4-3/4 x 6-1/2	S10705	100	1#			
6 x 9-1/2	S10706	100	1#			
6-1/2 x 6-1/2	S10707	100	1#			
9 x 12	S10708	100	1#			
10 x 8	S10709	100	1#			

NON-WOVEN SONIC WELD RESTAURANT TO-GO BAGS

IMPRINT ME!



80 gsm recycled polypropylene.
Reusable and recyclable.

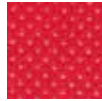
Our specially constructed, sonic weld bags expand to carry so much more!



White



Black



Red



Royal

	10 x 4-1/2 x 13 x 4-1/2	13 x 6-3/4 x 15 x 6-3/4
color	18" handle	18" handle
White	S56040	S56035
Black	S56041	S56036
Red	S56043	S56038
Royal	S56044	S56039



10 x 4-1/2 x 13 x 4-1/2



13 x 6-3/4 x 15 x 6-3/4

Holds
up to 3
9"
containers!

PRICING FOR UNPRINTED BAGS

size	handle	item#	case pack	wt./case	max print	1-9 cases (ea)	10-24 cases (ea)	25+ cases (ea)
10 x 4-1/2 x 13 x 4-1/2	18"	see chart	100	9#	6 x 8			
13 x 6-3/4 x 15 x 6-3/4	18"	see chart	100	11#	9 x 9			

NON-WOVEN CATERING BAGS

IMPRINT ME!

- 80 GSM
- extra wide opening for loading carryout items
- side pockets for menus, silverware and condiments
- sewn side seams and gussets for extra strength

Holds up
to 2
full pans!



color	24 x 14 x 14 x 14 28" handle
Black	S46099
Red	S46100

PRICING FOR UNPRINTED BAGS

size	color	handle	item#	case pack	wt./case	max print	1-9 cases (ea)	10-24 cases (ea)	25+ cases (ea)
24 x 14 x 14 x 14	see chart	28"	see chart	50	13#	12 x 6			

USE UPRIGHT OR FLAT!



SIDE LOADING PROTECTS
FOOD FROM SPILLAGE;
SAVES LOADING TIME

	13 x 7 x 13 x 7	15 x 8 x 15 x 8	17 x 9 x 17 x 9
color	15" handle	18" handle	18" handle
Black	S46092	S46095	S46098
Red	S46093	S46096	N/A
Hunter Green	S46094	S46097	N/A

PRICING FOR UNPRINTED BAGS

size	handle	item#	case pack	wt./case	max print	1-9 cases (ea)	10-24 cases (ea)	25+ cases (ea)
13 x 7 x 13 x 7	15"	see chart	100	11#	3-1/2 x 3-1/2			
15 x 8 x 15 x 8	18"	see chart	100	15#	3-1/2 x 3-1/2			
17 x 9 x 17 x 9	18"	see chart	100	18#	4 x 4			

NON-WOVEN GROCERY BAGS

IMPRINT ME!



100 gsm recycled polypropylene.
Reusable and recyclable.



20" reinforced handles.
8" or 10" gussets for bulky items.
Plain black vinyl bottom insert.

Please note the color Pink is only available while supplies last.
A new, Dark Pink color will replace current stock.



color	12 x 8 x 13 20" handle	13 x 10 x 15 20" handle
Black	S55006	S55029
Dark Green	S55007	S55030
Khaki	S55008	S55031
Lime	S55009	S55032
Natural	S55010	S55033
Navy Blue	S55011	S55034
Pink	S55012	S55035
Royal Blue	S55013	S55036
Red	S55014	S55037
White	S55015	S55038
Burgundy	S55097	S55101
Aqua Blue	S55098	S55102
Charcoal	S55099	S55103
Yellow	S55100	S55104
Orange	S55105	S55107
Chocolate	S55106	S55108



Black



Dark Green



Khaki



Lime



Natural



Navy Blue



Pink



Royal Blue



Red



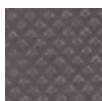
White



Burgundy



Aqua Blue



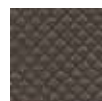
Charcoal



Yellow



Orange



Chocolate

PRICING FOR UNPRINTED BAGS

size	handle	item#	case pack	wt./case	max print	1-9 cases (ea)	10-24 cases (ea)	25+ cases (ea)
12 x 8 x 13	20"	see chart	100	24#	5 x 8			
13 x 10 x 15	20"	see chart	100	29#	5-3/4 x 10			

NON-WOVEN WINE TOTES

IMPRINT ME!



**Earth
Friendly**

100 gsm recycled polypropylene.
Reusable and recyclable.



Black



Burgundy



Natural

	4 x 16 1 bottle die-cut	7 x 3-1/2 x 11 2 bottle 20" handle	7 x 7 x 11 4 bottle 20" handle	10 x 7 x 11 6 bottle 36" handle
color				
Black	S55186	S55178	S55093	S55095
Burgundy			S55094	S55096
Natural			S55130	S55131



Sewn-in bottle divider.



PRICING FOR UNPRINTED BAGS

size	handle	item#	case pack	wt./case	max print	1-9 cases (ea)	10-24 cases (ea)	25+ cases (ea)
4 x 16	die-cut	see chart	100	14#	3-1/2 x 5			
7 x 3-1/2 x 11	20"	see chart	100	16#	4 x 4			
7 x 7 x 11	20"	see chart	100	17#	4 x 4			
10 x 7 x 11	36"	see chart	100	20#	2-1/2 x 5			

NON-WOVEN ECONO GROCERY TOTES

IMPRINT ME!



**Earth
Friendly**

60 gsm recycled polypropylene.
Reusable and recyclable.
Plain black vinyl bottom insert.

color	12 x 8 x 13 18" handle
Red	S55112
Black	S55113
Dark Green	S55114
Natural	S55115
Royal Blue	S55116



Red



Black



Dark Green



Natural



Royal Blue



PRICING FOR UNPRINTED BAGS

size	handle	item#	case pack	wt./case	max print	1-9 cases (ea)	10-24 cases (ea)	25+ cases (ea)
12 x 8 x 13	18"	see chart	100	15#	8 x 5			



- 100% recycled
- kraft interiors
- one piece construction

Imprint
your logo
on your
boxes!



WHITE BAKERY BOXES

size	item#	case pack	wt./case*	max print	1-9 cases (ea)	10-24 cases (ea)	25+ cases (ea)
5-1/2 x 5-1/2 x 4	B46039	250	30#	4 x 4			
8 x 8 x 4	B46040	200	42#	6-1/2 x 6-1/2			
9 x 5 x 4	B46041	250	35#	7 x 3-1/2			
9 x 9 x 4	B46042	200	50#	7-1/2 x 7-1/2			
10 x 10 x 2-1/2	B46043	250	56#	8-1/2 x 8-1/2			
10 x 10 x 5	B46044	100	38#	8-1/2 x 8-1/2			
14 x 10 x 4	B46045	100	39#	11 x 8			

CHOCOLATE BAKERY BOXES

size	item#	case pack	wt./case*	max print	1-9 cases (ea)	10-24 cases (ea)	25+ cases (ea)
4 x 4 x 4 (1 cup)	B46046	200	16#	2-1/2 x 2-1/2			
8 x 4 x 4 (2 cup)	B46048	200	20#	6-1/2 x 2-1/2			
7 x 7 x 4 (4 cup)	B46047	200	34#	5-1/2 x 5-1/2			
10 x 10 x 4 (6 cup)	B46049	100	30#	8-1/2 x 8-1/2			
14 x 10 x 4 (12 cup)	B46050	100	39#	11 x 8			

STRAWBERRY BAKERY BOXES

size	item#	case pack	wt./case*	max print	1-9 cases (ea)	10-24 cases (ea)	25+ cases (ea)
4 x 4 x 4 (1 cup)	B46051	200	16#	2-1/2 x 2-1/2			
8 x 4 x 4 (2 cup)	B46053	200	20#	6-1/2 x 2-1/2			
7 x 7 x 4 (4 cup)	B46052	200	34#	5-1/2 x 5-1/2			
10 x 10 x 4 (6 cup)	B46054	100	30#	8-1/2 x 8-1/2			
14 x 10 x 4 (12 cup)	B46055	100	39#	11 x 8			

* case weights may vary

**Cupcake inserts
available!
See below.**



WHITE WINDOWED BAKERY BOXES

size	item#	case pack	wt./case	1-9 cases	10-24 cases	25+ cases
6 x 6 x 3	B46057	200	19#			
10 x 10 x 2-1/2	B46058	150	25#			
13 x 8-3/8 x 2-1/4	B46059	100	18#			

WHITE WINDOWED CUPCAKE BOXES

size	item#	case pack	wt./case	1-9 cases	10-24 cases	25+ cases
4 x 4 x 4 (1 cup)	B46056	100	7#			
8 x 4 x 4 (2 cup)	B46115	100	10#			
7 x 7 x 4 (4 cup)	B46114	100	14#			
10 x 10 x 4 (6 cup)	B46116	100	23#			
14 x 10 x 4 (12 cup)	B46117	100	28#			

WHITE CUPCAKE INSERTS

size	item#	case pack	wt./case	1-9 cases	10-24 cases	25+ cases
3-15/16 x 3-15/16 x 7/8 (1 cup)	B46060	100	2#			
7-15/16 x 3-15/16 x 7/8 (2 cup)	B46062	100	3#			
6-15/16 x 6-15/16 x 7/8 (4 cup)	B46061	100	3#			
9-15/16 x 9-15/16 x 7/8 (6 cup)	B46063	100	6#			
13-15/16 x 9-15/16 x 7/8 (12 cup)	B46064	100	7#			

BETTER BAKERS BOX

- made from best quality heavy-weight SBS board
- elegant gloss white exterior and flat white interior to show off your cakes, pies and cookies
- comes completely assembled – simply pop the box open, insert your baked goods and close the top
- locking corners keep box shape rigid

If time, quality, value, and customer satisfaction are important to you
then there is no substitute for a **BETTER BAKERS BOX!**



IMPRINT ME!

pie/cookie box

See pp.36-38.



pie/cookie box, open



pie/cookie box, with window



single cupcake box



single cupcake insert
Reversible! One side for small and regular
cupcakes; reverse side for jumbo cupcakes.



cake/pie/cookie box



IMPRINT ME!

1/4 sheet cake/doz. cupcake box

See pp.36-38.



1/4 sheet cake/doz. cupcake box, with window



cupcake box insert
Fits small or regular size cupcakes.

**PERFECT SOLUTION FOR TIERED CAKES AND WEDDING CAKES!
MADE FROM E-FLUTE CORRUGATED FOR STRENGTH AND DURABILITY.**



2-piece rigid cake box



2-piece rigid cake box, with window



TOP



BOTTOM



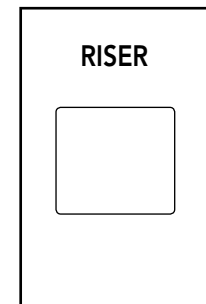
3-piece rigid tiered cake box



3-piece rigid tiered cake box, with window



TOP



RISER



BOTTOM

BETTER BAKERS BOX – SBS BOARD

name	size	item#	case pack	wt./case	max print	1-9 cases (ea)	10-24 cases (ea)	25+ cases (ea)
single cupcake box	4 x 4 x 4-1/4 box, with window	B46076	50	5#				
single cupcake insert	fits 4 x 4 x 4-1/4 box	B46077	50	2#				
pie/cookie box	9 x 9 x 2-1/2 box, no window	B46078	50	9#	7 x 7			
pie/cookie box	9 x 9 x 2-1/2 box, with window	B46079	50	9#				
cake/pie/cookie box	10 x 10 x 4 box, with window	B46080	50	12#				
1/4 sheet cake/doz. cupcake box	14 x 10 x 4-1/4 box, no window	B46081	50	17#	11 x 8			
1/4 sheet cake/doz. cupcake box	14 x 10 x 4-1/4 box, with window	B46082	50	15#				
1 doz. cupcake insert	fits 14 x 10 x 4-1/4 box	B46083	50	8#				

BETTER BAKERS BOX – E-FLUTE CORRUGATED

name	size	item#	case pack	wt./case	1-9 cases	10-24 cases	25+ cases
2-piece rigid cake box, no window	10 x 10 x 6	B46084	25	18#			
2-piece rigid cake box with window	10 x 10 x 6	B46085	25	17#			
2-piece rigid cake box, no window	12 x 12 x 6,	B46086	25	22#			
2-piece rigid cake box with window	12 x 12 x 6	B46087	25	21#			
3-piece rigid tiered cake box, no window	12 x 12 x 18	B46088	13	21#			
3-piece rigid tiered cake box with window	12 x 12 x 18	B46089	13	20#			
3-piece rigid tiered cake box, no window	14 x 14 x 18	B46090	13	25#			
3-piece rigid tiered cake box with window	14 x 14 x 18	B46091	13	24#			

2-piece = top and bottom

3 piece = top, riser and bottom

FOOD SERVICE TISSUE Made in USA

LIGHTWEIGHT DRY WAX TISSUE: Ideal for “pick-up” applications and light food handling. Perfect for cookies, donuts, pastries, bagels, pretzels and candies.

HIGH PERFORMANCE DRY WAX TISSUE: Most versatile basket liners are perfect for chips & salsa, fries, wings or burgers, tacos and sandwich wraps!

BAKERY PICK-UP TISSUE – SOLIDS • ORDER BY THE PACK!



Strawberry T46101



Chocolate T46102



Cream T46103



Strawberry/Chocolate T46104

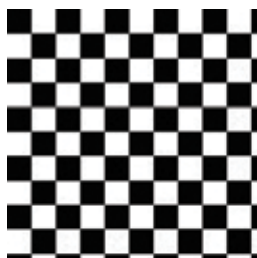
LIGHTWEIGHT 11/13# DRY WAX, INTERFOLD

sheet size	name/item#	sheets/pack	wt./pack	1-9 packs	10-24 packs	25+ packs
6" x 10-3/4"	see photos	1000	3#			

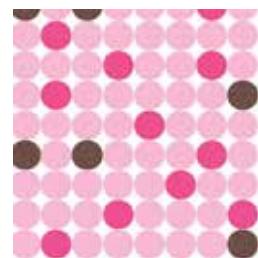
FOOD SERVICE TISSUE – PRINTS • ORDER BY THE PACK!



Game Changer
T46108



Black Check
T46113



Dots
T46105

HIGH PERFORMANCE 15/18# DRY WAX, FLAT

sheet size	item#	name	sheets/pack	wt./pack	1-9 packs	10-24 packs	25+ packs
12" x 12"	T46108	game changer	1000	7#			
12" x 12"	T46113	black check	1000	7#			
12" x 12"	T46105	dots	1000	7#			

FOOD SERVICE TISSUE – SOLIDS • ORDER BY THE PACK!

Our low minimums make it easy to add a splash of color to your packaging.



Caramel T46109



Cherry T46110



Grape T46111

HIGH PERFORMANCE 15/18# DRY WAX, FLAT

sheet size	name/item#	sheets/pack	wt./pack	1-9 packs	10-24 packs	25+ packs
12" x 12"	see photos	1000	7#			

FOOD SERVICE TISSUE – WHITE • ORDER BY THE PACK!



White T46112

HIGH PERFORMANCE 15/18# DRY WAX, FLAT

sheet size	item#	name	sheets/pack	wt./pack	1-9 packs	10-24 packs	25+ packs
12" x 12"	T46112	white	1000	7#			

CUSTOM PRINTED FOOD SERVICE TISSUE



ADD YOUR LOGO FOR AS FEW AS 25,000 SHEETS!

- 1-2 COLOR DESIGNS <25% INK COVERAGE
- 25 PACK MINIMUM (25,000 SHEETS)
- PACKED 5 PACKS PER CASE

We offer
the lowest
minimums!

CUSTOM PRINTED FOOD SERVICE TISSUE (WHITE AND CARAMEL HIGH PERFORMANCE 15/18# DRY WAX)

sheet size	item#	name	sheets/pack	wt./pack	25 packs
12" x 12"	N/A	1-color custom	1000	7#	
12" x 12"	N/A	2-color custom	1000	7#	
15" x 15"	N/A	1-color custom	1000	11#	
15" x 15"	N/A	2-color custom	1000	11#	

PRESENTATION POP-UP GIFT CARD FOLDERS



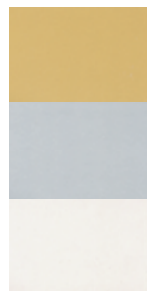
IMPRINT ME!

U.S. Patent Pending



Made from 80% recycled post-consumer board and are 100% recyclable.

Call for information on Custom Printed Folders



Gold
A28067

Silver
A28066

White
A28068



Black
A28064

Pearl
Stripe
A28069

Red
A28065

PRESENTATION POP-UP GIFT CARD FOLDERS

size	item#	case pack	wt./case	max print	1-9 cases	10-24 cases	25+ cases
5 x 3-3/8 x 1/8	see chart	100	3#	3-1/2 x 2			



Mailing Envelopes (sold separately)

PRESENTATION POP-UP GIFT CARD FOLDER ENVELOPES

type	size	item#	pack	wt./pack	1-9 packs	10-24 packs	25+ packs
white	5-7/16 x 3-1/2	A28075	100	2#			

PRESENTATION POP-UP GIFT CARD BOXES

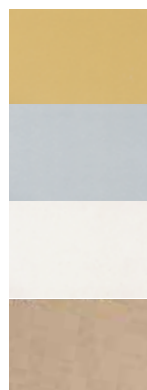
IMPRINT ME! Standard hot stamping costs do not apply. Call for quote. (minimum 500 boxes)



Boxes are made from recycled board.
U.S. Patent #8.47



white interior



B28026
Gold Metallic
(gold interior)

B28010
Silver Metallic
(silver interior)

B28008
White Gloss
(white interior)

B28007
Natural Kraft
(white interior)



B28009
Black Gloss
(silver interior)

B28019
Pearl Stripe
(silver interior)

B28011
Red Gloss
(gold interior)

B28025
Leather Jacket
(gold interior)

PRESENTATION POP-UP GIFT CARD BOXES

size	item#	case pack	wt./case	1-9 cases	10-24 cases	25+ cases
4-5/8 x 3-3/8 x 5/8	see chart	50	4#			

STRETCH LOOPS

10" STRETCH LOOPS WORK WELL WITH POP-UP GIFT CARD FOLDERS AND BOXES



Gold



Silver



STRETCH LOOPS – GOLD AND SILVER

loops	gold item #	silver item #	case pack	wt./case	1-9 cases	10-24 cases	25+ cases
10" stretch loops, 18" cut	A50171	A50172	1000	3#			

SPLENDORETTE® CRIMPED CURLING RIBBON



White *	R40098
Daffodil Yellow *	R40102
Gold *	R40103
Holiday Gold *	R40104
Melon *	R40105
Burgundy *	R40106
Red *	R40107

* Food Safe

Pink *	R40108
Azalea *	R40110
Lavender *	R40114
Purple *	R40115
Light Blue *	R40117
Royal *	R40119
Teal *	R40123

Citrus *	R40126
Mint *	R40127
Emerald *	R40129
Hunter *	R40130
Silver *	R40131
Black *	R40132
Tropical Orange *	R40133

SPLENDORETTE® CURLING RIBBON – SOLIDS

ribbon	item #	wt./roll	1-9 rolls	10-24 rolls	25+ rolls
3/16" x 500 yds.	see chart	1#			

FLORA-SATIN® PERFECT BOWS®



color	perfect bows®		
	4" x 18 loops 3/4" ribbon	5-1/2" x 20 loops 1-7/16" ribbon	8" x 20 loops 1-7/16" ribbon
White	A50329	A50361	
Pink	A50330	A50362	
Light Blue	A50331	A50363	
Lavender	A50333	A50365	
Purple	A50334	A50366	
Royal	A50335	A50367	
Gold	A50336	A50368	
Silver	A50337	A50369	
Emerald	A50338	A50370	
Black	A50341	A50373	
Azalea	A50342	A50374	
Imperial Red	A50347	A50379	A50511
Daffodil Yellow	A50349	A50381	
Burgundy	A50352	A50002	
Holiday Gold	A50353	A50003	
Citrus	A77098	A77100	

EASY AS 1 – 2 – 3!
Pull tie strings to make an instant bow!



FLORA-SATIN® PERFECT BOWS®

bows and ribbon	item #	case pack	wt./case	1-9 cases	10-24 cases	25+ cases
4" x 18 loops, 3/4" ribbon	see chart	50	1#			
5-1/2" x 20 loops, 1-7/16" ribbon	see chart	50	1#			
8" x 20 loops, 1-7/16" ribbon	see chart	50	3#			

MATTE WRAPHIA®



White - A50105
Black - A50136
Daffodil - A50109
Oatmeal - A50113
Kraft - A50117

Tropical Orange - A50859
Imperial Red - A50126
Beauty - A50133
Lavender - A50111
Purple - A50119

Sage - A50108
Kelly Green - A50116
Hunter - A50120
Aqua - A50123
Royal - A50127

wraphia®	item #	wt./roll	1-9 rolls	10-24 rolls	25+ rolls
Matte - Rayon, 100 yds.	see chart	1#			

HOT STAMPING STOCK COLORS



Navy Blue Matte



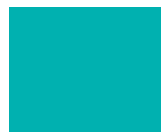
Electric Blue Matte



Baby Blue Matte



Peacock Matte



Turquoise Matte



Forest Green Matte



Green Matte



Olive Matte



Light Green Matte



Burgundy Matte



Red Matte



Orange Matte



Yellow Matte



Orchid Matte



Purple Matte



Deep Pink Matte



Rose Quartz Matte



Baby Pink Matte



Dark Brown Matte



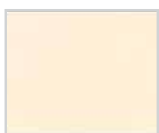
Medium Brown
Matte



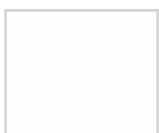
Grey Matte



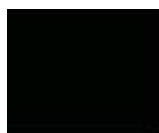
Taupe Matte



Ivory Matte



White*



Black*



Champagne Matte
Metallic



Teal Matte
Metallic



Red Matte
Metallic



Purple Matte
Metallic



Copper Matte
Metallic



Gold Matte
Metallic



Silver Matte
Metallic



Blue Metallic



Teal Metallic



Green Metallic



Lime Metallic



Burgundy Metallic



Red Metallic



Fuchsia Metallic



Pink Metallic



Purple Metallic



Copper Metallic



Gold Metallic



Silver Metallic



Chocolate Metallic



Black Metallic



Iridescent

***Available in both Gloss and Matte. The colors on this page are 4-color process simulations of actual colors.**

INK PRINTING STOCK COLORS

						
Navy Blue PMS 281C	Royal Blue PMS 293C	Lake Blue PMS 286C	Reflex Blue	Azul PMS 285C	Process Blue	Aquamarine PMS 3115C
						
Peacock PMS 3145C	Teal PMS 322C	Bright Teal PMS 327C	Forest Green PMS 560C	Shamrock Green PMS 342C	Kelly Green PMS 347C	Greensboro Green PMS 354C
						
Leaf PMS 384C	Acid Green PMS 382C	Bamboo PMS 379C	Yellow PMS 108C	Warm Burgundy PMS 209C	Ruby PMS 222C	Brick Red PMS 1805C
						
Lipstick Red PMS 199C	Bright Red PMS 185C	Rhodamine Red	Hot Pink PMS 219C	Orange PMS 021C	Pantone Purple	Royal Purple PMS 526C
						
Pantone Violet	Milk Chocolate PMS 174C	Bruno PMS 477C	Dark Chocolate PMS 490C	Smoke Grey PMS 431C	Copper PMS 876C	Gold PMS 872C
		<p>The colors on this page are 4-color process simulations of designated Pantone® colors. Actual colors may vary. Please keep in mind the background color of the ink printed item may alter the appearance of the ink, especially light colors printed on dark backgrounds.</p> <p>TRY OUR TWO-COLOR INK PRINTING PROGRAM!</p> <p>2-Color/1-Side SAME PRICE As 1-Color/1-Side (2-Color Requires <u>2</u> Plates)</p>				
Silver PMS 877C	Black					

SILK SCREEN COLORS

				
White	Cream PMS 1205C	Lemon Yellow PMS 107C	Golden Yellow PMS 136C	Orange PMS 021C
				
Texas Orange PMS 174C	Red PMS 185C	Dark Red PMS 201C	Maroon PMS 209C	Brandywine PMS 233C
				
Violet PMS 2587C	Purple PMS 268C	Ultra Blue PMS 2726C	Light Blue PMS 299C	Columbia Blue PMS 659C
				
Island Blue PMS 285C	Reflex Blue	Navy Blue PMS 281C	Teal PMS 7466C	Kelly Green PMS 347C
				
Dark Green PMS 342C	Lime Green PMS 360C	Brown PMS 490C	Grey PMS 430C	Black
				
Copper PMS 876C	Gold Shimmer	Metallic Silver	Metallic Blue	Metallic Green
		<p>The PMS colors on this page are 4-color process simulations.</p> <p>Note: On custom PMS color matches, the color of the bag may affect the silk screen ink color match. We will make every effort to compensate for that when mixing inks to achieve as close a match as possible to the PMS color requested.</p>		
Metallic Purple	Metallic Ruby			

