



 **ecopak**
bags and gift packaging

AGI
#49854

SAGE
SUPPLIER MEMBER
#68815

Non-Woven Reusable Shopping Bags

2 color pre-printed bags



Plain Pre-Printed Bag Prices: All pricing is per hundred (C) bags.

Bag size	Weight/ Case	< 500	500 < 1 M	1 M < 1.5 M	1.5 M < 2.5 M	2.5 M < 5 M
8"x5"x10"x5"	10#					
10"x6"x13"x6"	13#					
13"x7"x15"x7"	19#					
16"x6"x16"x6"	21#					

Bags including silk screening 1C/1S

Bag size	Weight/ Case	1-4 cases	5-9 cases	10-14 cases	15-24 cases	25-49 cases
8"x5"x10"x5"	10#					
10"x6"x13"x6"	13#					
13"x7"x15"x7"	19#					
16"x6"x16"x6"	21#					

All pricing is per case of 100 pieces and includes 1 color / 1 side silk screening. All prices are FOB our plant

Set up charge:

Maximum plate size pre-printed bags:

Bag size	Width x Height
8"x5"x10"x5"	6" x 5"
10"x6"x13"x6"	8" x 7"
13"x7"x15"x7"	10" x 9"
16"x6"x16"x6"	13" x 10"

Stock ink colors for silk screening:

Hexachrome Green C		
Bright Orange	Black	Lt. Blue
Cherry Red	White	Flesh Tan
Bright Green	Neon Pink	Solar Blue
Bright Yellow	Metallic Gold	

Available Bag Colors

Chocolate



Kelly Green



8"x5"x10"x5" not available in Chocolate,
13"x7"x15"x7" not available in Kelly Green

Made from 80 GSM polypropylene with matching piping and 18" "X" stitched handles with polypropylene bottom boards, packed 100 per case.

Minimum order is one case.

Due to different manufacturer's varying specifications actual bag sizes may differ by up to 1/2 inch.

Non-Woven Reusable Shopping Bags

plain bags



Plain Bag Prices: All pricing is per hundred (C) bags.

Bag size	Weight/ Case	< 500	500 < 1 M	1 M < 1.5 M	1.5 M < 2.5 M	2.5 M < 5 M
8"x5"x10"x5"	10#					
10"x6"x13"x6"	13#					
13"x7"x15"x7"	19#					
16"x6"x16"x6"	21#					

Bags including silk screening 1C/1S

Bag size	Weight/ Case	1-4 cases	5-9 cases	10-14 cases	15-24 cases	25-49 cases
8"x5"x10"x5"	10#					
10"x6"x13"x6"	13#					
13"x7"x15"x7"	19#					
16"x6"x16"x6"	21#					

All pricing is per case of 100 pieces and includes 1 color / 1 side silk screening. All prices are FOB our plant

Set up charge:

Maximum plate size pre-printed bags:

Bag size	Width x Height
8"x5"x10"x5"	6" x 6"
10"x6"x13"x6"	8" x 8"
13"x7"x15"x7"	10" x 10"
16"x6"x16"x6"	13" x 11"

Stock ink colors for silk screening:

Hexachrome Green C		
Bright Orange	Black	Lt. Blue
Cherry Red	White	Flesh Tan
Bright Green	Neon Pink	Solar Blue
Bright Yellow	Metallic Gold	

Available Bag Colors

Black (All Sizes) Ivory (all sizes) Chocolate (8"x5"x10"x5" only) Kelly Green (13"x7"x15"x7" only)



Made from 80 GSM polypropylene with matching piping and 18" "X" stitched handles with polypropylene bottom boards, packed 100 per case.

Minimum order is one case.

Due to different manufacturer's varying specifications actual bag sizes may differ by up to 1/2 inch.

Laminated Eurotote Shopping Bags



Plain Bag Prices: All pricing is per hundred (C) bags.

Size	Bag Color(s)	< 5C	5C < 10C	10C < 15C	15C < 25C	> 25C
Plain Bag Prices: All pricing is per hundred (C) bags, FOB our plant.						
6½" X 3½" X 6½" Case pack: 100 per case Weight per case 9#	Gloss White					
	Matte White					
	Gloss Colors*					
	Matte Colors*					
8" X 4" X 10" Case pack: 100 per case Weight per case 14#	Gloss White					
	Matte White					
	Gloss Colors*					
	Matte Colors*					
9" X 3½" X 7" Case pack: 100 per case Weight per case 12#	Gloss White					
	Matte White					
	Gloss Colors*					
	Matte Colors*					
13" X 5" X 10" Case pack: 100 per case Weight per case 23#	Gloss White					
	Matte White					
	Gloss Colors*					
	Matte Colors*					
16" X 6" X 12" Case pack: 100 per case Weight per case 30#	Gloss White					
	Matte White					
	Gloss Colors*					
	Matte Colors*					
20" X 6" X 16" Case pack: 100 per case Weight per case 40#	Gloss White					
	Matte White					
	Gloss Black					
	Matte Black					

These Laminated Eurototes are made from 157 gsm art paper with matching four knot rope handles and have cardboard reinforced tops and bottoms. Darker colors are likely to show scratches and fold marks more than light colors. No returns or credits are issued for this reason.

Due to different manufacturer's varying specifications actual bag sizes may differ by up to 1/2 inch.

*See chart below for color and size availability.

All prices are FOB our plant

Bag Size	N/A - This bag size is not available in this color						High Gloss:			Matte:		
	6½x3½x6½	8x4x10	9x3½x7	13x5x10	16x6x12	20x6x16	Black	Burgundy	Gold	Black	Burgundy	Chocolate
Gloss Colors												
Black	✓	✓	✓	✓	✓	✓						
Burgundy	✓	✓	N/A	N/A	✓	N/A						
Gold	N/A	✓	N/A	N/A	✓	N/A						
Hunter	✓	✓	N/A	N/A	✓	N/A						
Navy	N/A	✓	N/A	✓	✓	N/A						
Red	N/A	✓	N/A	N/A	✓	N/A						
Royal	N/A	✓	N/A	✓	✓	N/A						
Silver	✓	✓	N/A	N/A	✓	N/A						
White	✓	✓	✓	✓	✓	✓						
Matte Colors												
Black	✓	✓	✓	✓	✓	✓						
Burgundy	✓	✓	N/A	N/A	✓	N/A						
Chocolate	N/A	✓	✓	✓	✓	N/A						
Hunter	✓	✓	N/A	N/A	✓	N/A						
Ivory	✓	✓	✓	✓	✓	N/A						
Navy	N/A	✓	✓	✓	✓	N/A						
Silver	N/A	✓	N/A	N/A	✓	N/A						
White	✓	✓	✓	✓	✓	✓						

Minimum order is one case.

Fashion Tint Paper Eurotote Bags



Plain Bag Prices: all pricing is per hundred (C) bags.

Size	Case Pack/Weight	< 5C	5C < 10C	10C < 15C	15C < 25C	> 25C
5½" X 3½" X 6"	Case pack: 100 per case Weight per case 8#					
8" X 4" X 10"	Case pack: 100 per case Weight per case 13#					
16" X 6" X 12"	Case pack: 100 per case Weight per case 26#					

Bags including Ink Printing 1 color/1 side: all pricing is per hundred (C) bags.

Bag Size	1 Case	2 Cases	5 Cases	7 Cases	10 Cases	15 Cases	25 Cases
5½" X 3½" X 6"							
8" X 4" X 10"							
16" X 6" X 12"							

Since bags are packed 100 per case all printed bag pricing is per case.

All prices are FOB our plant

We do not recommend ink printing the darker colors of these bags and using metallic inks does not always present the best possible image. For best results we suggest that you foil stamp these bags when a custom logo is desired.

To have these bags foil stamped, please see chart below for additional stamping charge. The hot stamping charge must be added to the plain bag price for total cost. Multi-color or multi-side printing or foil stamping may be available. Please contact office for feasibility and pricing. Please see page 39 for plate charges.

Minimum order is one case.

Fashion tint shopping bags are nonlaminated eurotote style paper bags made from 128 GSM art board tinted inside and out to desired color with a varnish finish. Each bag has matching four knot rope handles with cardboard reinforced tops.

Available Bag Colors



*Cerise Red not available in 16"x6"x12" size.

EUROTOTE HOT STAMPING CHARGES

Imprint Area	Minimum Stamping Charge	Price Per Hundred			
		1M < 3 M	3 M < 5 M	5 M < 10 M	> 10 M
Up to 20 Square Inches					
21 to 40 Square Inches					
41 to 60 Square Inches					
61 to 80 Square Inches					
81 to 100 Square Inches					
101 to 120 Square Inches					



Plain Bag Prices: All pricing is per thousand (M) bags.

Bag Size	Weight/ Case	Case Pack	< 1 M	1M < 3 M	3 M < 5 M	5 M < 10 M	> 10 M
5¼" x 3¼" x 8¾"	18#	250					
8" x 4½" x 10¼"	27#	250					
10" x 5" x 13"	34#	250					
16" x 6" x 12"	43#	250					

Bags including Ink Printing 1 color/1 side: Except for orders less than 1,000 all pricing is per thousand (M) bags.

Bag Size	1 Case	2 Cases	3 Cases	1M < 3 M	3 M < 5 M	5 M < 10 M	> 10 M
5¼" x 3¼" x 8¾"							
8" x 4½" x 10¼"							
10" x 5" x 13"							
16" x 6" x 12"							

Printed bag pricing for quantities less than 1,000 is priced per case.

All prices are FOB our plant

Available Bag Colors



*** Pet Paws design not available in the 5¼" x 3¼" x 8¾" size.**

We do not recommend ink printing the darker colors of these bags and using metallic inks does not always present the best possible image. For best results we suggest that you foil stamp these bags when a custom logo is desired. To have these bags foil stamped, please see chart on page 7. The stamping charge must be added to the plain bag price for total cost. Multi-color or multi-side printing or foil stamping may be available. Please contact office for feasibility and pricing. Please see page 39 for plate charges.

Minimum order is one case.

Due to different manufacturer's varying specifications actual bag sizes may differ by up to ½ inch.

High Gloss Paper Shopping Bags



Plain Bag Prices: All pricing is per thousand (M) bags.

Bag Size	Color	Weight /Case	Case Pack	< 1 M	1M < 3 M	3 M < 5 M	5 M < 10 M	> 10 M
5 1/4" x 3 1/4" x 8 3/8"	High Gloss White	18#	250					
8" x 4 1/2" x 10 1/4"	High Gloss White	27#	250					
8" x 4 1/2" x 10 1/4"	High Gloss Colors	27#	250					
16" x 6" x 12"	High Gloss White	46#	250					
16" x 6" x 12"	High Gloss Colors	46#	250					
16" x 6" x 19 1/4"	High Gloss White	43#	200					
16" x 6" x 19 1/4"	High Gloss Colors	43#	200					

Bags including Ink Printing 1 color/1 side: Except for orders less than 1,000 all pricing is per thousand (M) bags.

Bag Size	Color	1 Case	2 Cases	3 Cases	1M < 3 M	3 M < 5 M	5 M < 10 M	> 10 M
5 1/4" x 3 1/4" x 8 3/8"	High Gloss White							
8" x 4 1/2" x 10 1/4"	High Gloss White							
8" x 4 1/2" x 10 1/4"	High Gloss Colors							
16" x 6" x 12"	High Gloss White							
16" x 6" x 12"	High Gloss Colors							
16" x 6" x 19 1/4"	High Gloss White							
16" x 6" x 19 1/4"	High Gloss Colors							

Printed bag pricing for quantities less than 1,000 is priced per case.

All prices are FOB our plant

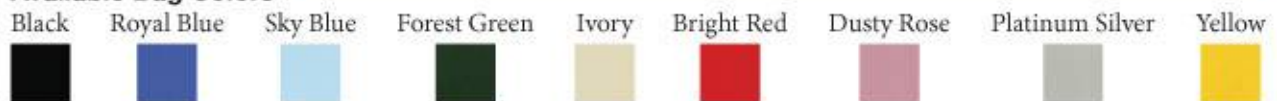
Due to possible smearing and halving we do not recommend ink printing on this type of bag. For best results we suggest that you foil stamp these bags when a custom logo is desired. To have these bags foil stamped, please see chart on page 7. The stamping charge must be added to the plain bag price for total cost. Multi-color or multi-side printing or foil stamping may be available.

Please contact office for feasibility and pricing. Please see page 39 for plate charges.

Bag Color	8"x4 1/2"x10 1/4"	16"x6"x12"	16"x6"x19 1/4"
Black	✓	✓	✓
Royal Blue	✓	✓	N/A
Sky Blue	✓	✓	✓
Forest Green	✓	✓	N/A
Ivory	✓	✓	✓
Bright Red	✓	✓	✓
Dusty Rose	✓	✓	✓
Platinum Silver	✓	✓	N/A
Yellow	✓	✓	N/A

N/A = This bag size **not available** in this color

Available Bag Colors



Minimum order is one case.

Due to different manufacturer's varying specifications actual bag sizes may differ by up to 1/2 inch

Oatmeal Kraft Paper Shopping Bags



Plain Bag Prices: All pricing is per thousand (M) bags.

Bag Size	Weight/ Case	Case Pack	< 1 M	1M < 3 M	3 M < 5 M	5 M < 10 M	> 10 M
8" x 4½" x 10¼"	27#	250					
16" x 6" x 12"	46#	250					
16" x 6" x 19¼"	43#	200					

Bags including Ink Printing 1 color/1 side: Except for orders less than 1,000 all pricing is per thousand (M) bags.

Bag Size	1 Case	2 Cases	3 Cases	1M < 3 M	3 M < 5 M	5 M < 10 M	> 10 M
8" x 4½" x 10¼"							
16" x 6" x 12"							
16" x 6" x 19¼"							

Printed bag pricing for quantities less than 1,000 is priced per case.

All prices are FOB our plant

To have these bags foil stamped, please see chart below. The Stamping charge must be added to the plain bag price for total cost. Multi-color or multi-side printing or foil stamping may be available. Please contact office for feasibility and pricing. Please see page 39 for plate charges.

HOT STAMPING CHARGES PAPER SHOPPERS

Imprint Area	Minimum Stamping Charge	Price Per M			
		1 M < 3 M	3 M < 5 M	5 M < 10 M	> 10 M
Up to 20 Square Inches					
21 to 40 Square Inches					
41 to 60 Square Inches					
61 to 80 Square Inches					
81 to 100 Square Inches					
101 to 120 Square Inches					

Please add the hot stamping charge to the appropriate plain bag cost to get your total cost.

Food Service Paper Shopping Bags



Plain Bag Prices: All pricing is per thousand (M) bags.

Bag Size	Color	Weight /Case	Case Pack	< 1 M	1M < 3 M	3 M < 5 M	5 M < 10 M	> 10 M
13" x 7" x 12½"	Natural 65#	41#	250					
13" x 7" x 12½"	White 65#	41#	250					
12" x 9" x 15¼"	Natural 65#	34#	200					
12" x 9" x 15¼"	White 65#	34#	200					
14" x 8" x 14¾"	Natural 65#	38#	200					
14" x 8" x 14¾"	White 65#	38#	200					
14½" x 9½" x 16¼"	Natural 63#	50#	200					
14½" x 9½" x 16¼"	White 63#	50#	200					
14" x 10" x 15½"	Natural 70#	43#	200					
14" x 10" x 15½"	White 70#	43#	200					
16" x 11" x 18¼"	Natural 70#	54#	200					
16" x 11" x 18¼"	White 70#	54#	200					

Bags including Ink Printing 1 color/1 side: Except for orders less than 1,000 all pricing is per thousand (M) bags.

Bag Size	Color	1 Case	2 Cases	3 Cases	1M < 3 M	3 M < 5 M	5 M < 10 M	> 10 M
13" x 7" x 12½"	Natural 65#							
13" x 7" x 12½"	White 65#							
12" x 9" x 15¼"	Natural 65#							
12" x 9" x 15¼"	White 65#							
14" x 8" x 14¾"	Natural 65#							
14" x 8" x 14¾"	White 65#							
14½" x 9½" x 16¼"	Natural 63#							
14½" x 9½" x 16¼"	White 63#							
14" x 10" x 15½"	Natural 70#							
14" x 10" x 15½"	White 70#							
16" x 11" x 18¼"	Natural 70#							
16" x 11" x 18¼"	White 70#							

Printed bag pricing for quantities less than 1,000 is priced per case.

All prices are FOB our plant

These bags may be ink printed with any of our stock ink colors. To have these bags foil stamped, please see chart on page 7. The stamping charge must be added to the plain bag price for total cost. Multi-color or multi-side printing or foil stamping may be available. Please contact office for feasibility and pricing. Please see page 39 for plate charges.

Minimum order is one case.

Due to different manufacturer's varying specifications actual bag sizes may differ by up to ½ inch.

Available Bag Colors

Kraft

White



Matte White Tint Paper Shopping Bags



Plain Bag Prices: All pricing is per thousand (M) bags.

Size	Weight/ Case	Case Pack	Colors	< 1 M	1M < 3 M	3 M < 5 M	5 M < 10 M	> 10 M
GEM/ROSE	18#	250	Standard Colors					
5¼" x 3½" x 8¾"	18#	250	Recycled Colors					
CUB/TEMPO	27#	250	Standard Colors					
8" X 4½" X 10¼"	27#	250	Recycled Colors					
MISSY	37#	250	Standard Colors					
10" X 5" X 13"	37#	250	Recycled Colors					
VOUGE/TOTE	46#	250	Standard Colors					
16" X 6" X 12"	46#	250	Recycled Colors					
QUEEN/TOWNER	43#	200	Standard Colors					
16" X 6" X 19¼"	43#	200	Recycled Colors					

Bags including Ink Printing 1 color/1 side: Except for orders less than 1,000 all pricing is per thousand (M) bags.

Bag Size	Color	1 Case	2 Cases	3 Cases	1M < 3 M	3 M < 5 M	5 M < 10 M	> 10 M
5¼" x 3½" x 8¾"	Standard Colors							
5¼" x 3½" x 8¾"	Recycled Colors							
8" x 4½" x 10¼"	Standard Colors							
8" x 4½" x 10¼"	Recycled Colors							
10" x 5" x 13"	Standard Colors							
10" x 5" x 13"	Recycled Colors							
16" x 6" x 12"	Standard Colors							
16" x 6" x 12"	Recycled Colors							
16" x 6" x 19¼"	Standard Colors							
16" x 6" x 19¼"	Recycled Colors							

Printed bag pricing for quantities less than 1,000 is priced per case.

All prices are FOB our plant

Due to the lighter colors of these bags they may be ink printed with most stock ink colors. To have these bags foil stamped, please see chart on page 7. The stamping charge must be added to the plain bag price for total cost. Multi-color or multi-side printing or foil stamping may be available. Please contact office for feasibility and pricing. Please see page 39 for plate charges.

Standard Colors



Recycled Colors



WHITE MATTE TINTED AVAILABILITY CHART

Color	Size				
	5¼" x 3½" x 8¾"	8" x 4½" x 10¼"	10" x 5" x 13"	16" x 6" x 12"	16" x 6" x 19¼"
Buttercup	✓	✓	✓	✓	N/A
Cerise	N/A	✓	N/A	✓	✓
Citrus Green	N/A	✓	✓	✓	N/A
Cyan Blue	N/A	✓	N/A	✓	✓
French Vanilla	✓	✓	✓	✓	N/A
Fuchsia	N/A	✓	N/A	✓	✓
Grape	N/A	✓	N/A	✓	✓
Lime Green	N/A	✓	N/A	✓	✓
Mon Cheri	N/A	✓	N/A	✓	N/A
Orange	N/A	✓	N/A	✓	✓
Turquoise	N/A	✓	N/A	✓	✓
Yellow	N/A	✓	N/A	✓	✓

Minimum order is one case.

Due to different manufacturer's varying specifications actual bag sizes may differ by up to ½ inch.

Matte Kraft Tint Paper Shopping Bags



Plain Bag Prices: All pricing is per thousand (M) bags.

Size	Weight/ Case	Case Pack	Colors	< 1 M	1M < 3 M	3 M < 5 M	5 M < 10 M	> 10 M
GEM/ROSE 5¼" x 3¼" x 8¾"	18#	250	Standard Colors					
	18#	250	Premium Colors					
	18#	250	Metallic Colors					
CUB/TEMPO 8" X 4½" X 10¼"	27#	250	Standard Colors					
	27#	250	Premium Colors					
	27#	250	Metallic Colors					
MISSY 10" X 5" X 13"	37#	250	Standard Colors					
	37#	250	Premium Colors					
	37#	250	Metallic Colors					
VOUGE/TOTE 16" X 6" X 12"	46#	250	Standard Colors					
	46#	250	Premium Colors					
	46#	250	Metallic Colors					
QUEEN/TOWNER 16" X 6" X 19¼"	43#	200	Standard Colors					
	43#	200	Premium Colors					
	43#	200	Metallic Colors					

Bags including Ink Printing 1 color/1 side: Except for orders less than 1,000 all pricing is per thousand (M) bags.

Bag Size	Color	1 Case	2 Cases	3 Cases	1M < 3 M	3 M < 5 M	5 M < 10 M	> 10 M
5¼" x 3¼" x 8¾"	Standard Colors							
5¼" x 3¼" x 8¾"	Premium Colors							
5¼" x 3¼" x 8¾"	Metallic Colors							
8" X 4½" X 10¼"	Standard Colors							
8" X 4½" X 10¼"	Premium Colors							
8" X 4½" X 10¼"	Metallic Colors							
10" x 5" x 13"	Standard Colors							
10" x 5" x 13"	Premium Colors							
10" x 5" x 13"	Metallic Colors							
16" x 6" x 12"	Standard Colors							
16" x 6" x 12"	Premium Colors							
16" x 6" x 12"	Metallic Colors							
16" X 6" X 19¼"	Standard Colors							
16" X 6" X 19¼"	Premium Colors							
16" X 6" X 19¼"	Metallic Colors							

Printed bag pricing for quantities less than 1,000 is priced per case.

All prices are FOB our plant

We do not recommend ink printing the darker colors of these bags and using metallic inks does not always present the best possible image. For best results we suggest that you foil stamp these bags when a custom logo is desired. To have these bags foil stamped, please see chart on page 7. The stamping charge must be added to the plain bag price for total cost. Multi-color or multi-side printing or foil stamping may be available. Please contact office for feasibility and pricing. Please see page 39 for plate charges.

Minimum order is one case.

Standard Colors



Premium Colors



Metallic Colors



Due to different manufacturer's varying specifications actual bag sizes may differ by up to ½ inch.

MATTE KRAFT TINTED AVAILABILITY CHART

Color	Size				
	5¼" x 3¼" x 8 ³ / ₈ "	8" x 4½" x 10¼"	10" x 5" x 13"	16" x 6" x 12"	16" x 6" x 19¼"
Black	✓	✓	✓	✓	✓
Navy Blue	N/A	✓	N/A	✓	N/A
Parade Blue	✓	✓	✓	✓	N/A
Pacific Blue	N/A	✓	N/A	✓	✓
Peacock Blue	✓	✓	✓	✓	N/A
Charcoal	N/A	✓	N/A	✓	N/A
Chocolate	N/A	✓	N/A	✓	✓
Metallic Copper	N/A	✓	N/A	✓	✓
Dubonnet	N/A	✓	N/A	✓	N/A
Metallic Gold	N/A	✓	N/A	✓	✓
Deepwoods Green	N/A	✓	N/A	✓	✓
Forest Green	N/A	✓	N/A	✓	✓
Kelly Green	✓	✓	✓	✓	N/A
Tea Green	✓	✓	✓	✓	N/A
Magenta	N/A	✓	N/A	✓	N/A
Dark Purple	N/A	✓	N/A	✓	✓
Light Purple	N/A	✓	N/A	✓	✓
Brick	N/A	✓	N/A	✓	N/A
Sangria Red	N/A	✓	N/A	✓	✓
Scarlet	✓	✓	✓	✓	N/A
Metallic Silver	N/A	✓	N/A	✓	✓
Teal	N/A	✓	N/A	✓	✓

Natural Kraft Paper Shopping Bags



Plain Bag Prices: All pricing is per thousand (M) bags.

Bag Size	Weight /Case	Case Pack	< 1 M	1M < 3 M	3 M < 5 M	5 M < 10 M	> 10 M
5¼" x 3¼" x 8¾"	18#	250					
5¼" x 3¼" x 13"	22#	250					
8" x 4½" x 10¼"	26#	250					
8¾" x 5½" x 13½"	34#	250					
10" x 5" x 13"	34#	250					
16" x 6" x 12"	46#	250					
13" x 7" x 17"	43#	250					
16" x 6" x 15½"	38#	200					
16" x 6" x 19¼"	43#	200					
18" x 7" x 18"	48#	200					
24" x 7¼" x 18¾"	45#	125					

Bags including Ink Printing 1 color/1 side: Except for orders less than 1,000 all pricing is per thousand (M) bags.

Bag Size	1 Case	2 Cases	3 Cases	1M < 3 M	3 M < 5 M	5 M < 10 M	> 10 M
5¼" x 3¼" x 8¾"							
5¼" x 3¼" x 13"							
8" x 4½" x 10¼"							
8¾" x 5½" x 13½"							
10" x 5" x 13"							
16" x 6" x 12"							
13" x 7" x 17"							
16" x 6" x 15½"							
16" x 6" x 19¼"							
18" x 7" x 18"							
24" x 7¼" x 18¾"							

Printed bag pricing for quantities less than 1,000 is priced per case.

All prices are FOB our plant.

These bags may be ink printed with any of our stock ink colors. To have these bags foil stamped, please see chart on page 7. The stamping charge must be added to the plain bag price for total cost. Multi-color or multi-side printing or foil stamping may be available. Please contact office for feasibility and pricing. Please see page 39 for plate charges.

Minimum order is one case.

Due to different manufacturer's varying specifications actual bag sizes may differ by up to ½ inch.

White Kraft Paper Shopping Bags



Plain Bag Prices: All pricing is per thousand (M) bags.

Bag Size	Weight /Case	Case Pack	< 1 M	1M < 3 M	3 M < 5 M	5 M < 10 M	> 10 M
5¼" x 3¼" x 8⅓"	18#	250					
5¼" x 3¼" x 13"	22#	250					
8" x 4½" x 10¼"	26#	250					
8¾" x 5½" x 13½"	34#	250					
10" x 5" x 13"	34#	250					
16" x 6" x 12"	46#	250					
13" x 7" x 17"	43#	250					
16" x 6" x 15½"	38#	200					
16" x 6" x 19¼"	43#	200					
18" x 7" x 18"	48#	200					
24" x 7¼" x 18¾"	45#	125					

Bags including Ink Printing 1 color/1 side: Except for orders less than 1,000 all pricing is per thousand (M) bags.

Bag Size	1 Case	2 Cases	3 Cases	1M < 3 M	3 M < 5 M	5 M < 10 M	> 10 M
5¼" x 3¼" x 8⅓"							
5¼" x 3¼" x 13"							
8" x 4½" x 10¼"							
8¾" x 5½" x 13½"							
10" x 5" x 13"							
16" x 6" x 12"							
13" x 7" x 17"							
16" x 6" x 15½"							
16" x 6" x 19¼"							
18" x 7" x 18"							
24" x 7¼" x 18¾"							

Printed bag pricing for quantities less than 1,000 is priced per case.

All prices are FOB our plant

These bags may be ink printed with any of our stock ink colors. To have these bags foil stamped, please see chart on page 7. The stamping charge must be added to the plain bag price for total cost. Multi-color or multi-side printing or foil stamping may be available. Please contact office for feasibility and pricing. Please see page 39 for plate charges.

Minimum order is one case.

Due to different manufacturer's varying specifications actual bag sizes may differ by up to ½ inch.

Shadow Stripe Paper Shopping Bags



Plain Bag Prices: All pricing is per thousand (M) bags.

Bag Size	Color	Weight/ Case	Case Pack	< 1 M	1M < 3 M	3 M < 5 M	5 M < 10 M	> 10 M
8" x 4½" x 10¼"	Natural	27#	250					
8" x 4½" x 10¼"	White	27#	250					
8" x 4½" x 10¼"	Oatmeal	27#	250					
8" x 4½" x 10¼"	Colors	27#	250					
16" x 6" x 12"	Natural	46#	250					
16" x 6" x 12"	White	46#	250					
16" x 6" x 12"	Oatmeal	46#	250					
16" x 6" x 12"	Colors	46#	250					
16" x 6" x 19¼"	Natural	43#	200					
16" x 6" x 19¼"	White	43#	200					
16" x 6" x 19¼"	Oatmeal	43#	200					
16" x 6" x 19¼"	Colors	43#	200					

Bags including Ink Printing 1 color/1 side: Except for orders less than 1,000 all pricing is per thousand (M) bags.

Bag Size	Color	1 Case	2 Cases	3 Cases	1M < 3 M	3 M < 5 M	5 M < 10 M	> 10 M
8" x 4½" x 10¼"	Natural							
8" x 4½" x 10¼"	White							
8" x 4½" x 10¼"	Oatmeal							
8" x 4½" x 10¼"	Colors							
16" x 6" x 12"	Natural							
16" x 6" x 12"	White							
16" x 6" x 12"	Oatmeal							
16" x 6" x 12"	Colors							
16" x 6" x 19¼"	Natural							
16" x 6" x 19¼"	White							
16" x 6" x 19¼"	Oatmeal							
16" x 6" x 19¼"	Colors							

Printed bag pricing for quantities less than 1,000 is priced per case.

All prices are FOB our plant

We do not recommend ink printing the darker colors of these bags and using metallic inks does not always present the best possible image. For best results we suggest that you foil stamp these bags when a custom logo is desired. To have these bags foil stamped, please see chart on page 7. The stamping charge must be added to the plain bag price for total cost. Multi-color or multi-side foil stamping may be available. Please contact office for feasibility and pricing. Please see page 39 for plate charge.

Minimum order is one case.

Due to different manufacturer's varying specifications actual bag sizes may differ by up to ½ inch.

Available Colors

Apple Green	Black*	Brick Red	Boysenberry	Chocolate	Crushed Grape*	French Country Blue	Forest Green*
Sage Green	Lipstick	Picket Fence	Mellow Yellow	Natural	Navy Blue*	Oatmeal	Really Red*
Teal	Terra Cotta	White					

* This color shadow stripe shopper matches the shadow stripe merchandise bags on page #15.

Shadow Stripe Tinted Merchandise Bags



Plain Bag Prices: All pricing is per thousand (M) bags.

Bag Size	Weight/ Case	500	1M < 3 M	3 M < 5 M	5 M < 10 M	> 10 M
8½" X 11"	19#					
11½" X 15"	35#					
11½" X 2¼" X 18"	52#					
14½" X 3" X 21"	70#					
Bags including Ink Printing 1 color/1 side: Except for orders less than 1,000 all pricing is per thousand (M) bags.						
8½" X 11"	19#					
11½" X 15"	35#					
11½" X 2¼" X 18"	52#					
14½" X 3" X 21"	70#					
Bags including Foil Stamping 1 color/1 side: Except for orders less than 1,000 all pricing is per thousand (M) bags.						
8½" X 11"	19#					
11½" X 15"	35#					
11½" X 2¼" X 18"	52#					
14½" X 3" X 21"	70#					

Minimum order for this style of bag is 500 pieces.

All prices are FOB our plant

Natural kraft paper merchandise bags tinted and with a varnish stripe to match selected colors of shadow stripe paper shopping bags shown on page 14.

See swatches below for available colors.

Multi color or multi side printing or foil stamping may be available. Please contact office for feasibility and pricing.

We consider normal case pack of 8½ X 11 and 11½ X 15 bags to be 1,000 bags.

We consider normal case pack of 11½ X 3 X 18 and 14½ X 3 X 21 bags to be 500 bags.

Please see page 39 for plate charges.

Available Colors



* Crushed Grape no longer available in 8½ x 11 size.

6¼" x 9¼" Paper Merchandise Bags



Plain Bag Prices: All pricing is per thousand (M) bags.

Bag Color(s)	500	1M < 3 M	3 M < 5 M	5 M < 10 M	> 10 M
NATURAL MG, RECYCLED NATURAL MG					
FLORAL / PATTERN – RANDOM DESIGN					
WHITE MG					
COLORS					
Bags including Ink Printing 1 color/1 side: Except for orders less than 1,000 all pricing is per thousand (M) bags.					
NATURAL MG, RECYCLED NATURAL MG					
FLORAL / PATTERN – RANDOM DESIGN					
WHITE MG					
COLORS					
Bags including Foil Stamping 1 color/1 side: Except for orders less than 1,000 all pricing is per thousand (M) bags.					
NATURAL MG, RECYCLED NATURAL MG					
FLORAL / PATTERN – RANDOM DESIGN					
WHITE MG					
COLORS					

Minimum order for this style of bag is 500 pieces.

All prices are FOB our plant

Multi-color or multi-side printing or foil stamping may be available. Please contact office for feasibility and pricing.

We consider normal case pack of this size bag to be 1,000 pieces.

Approximate Shipping Weight per M: 9#

Plain bags of all types, styles and colors may be combined for volume discounts.

Floral bags are random designs; therefore specific designs or patterns cannot be requested. Swatches shown below are samples of possible designs. Actual designs **will** be different.

Please see page 39 for plate charges.

Available Colors

Black	Cream (tint)	Forest Green (tint)	Lime Green	Misty Gray (tint)	Navy Blue	Natural	Newsprint
Oatmeal	Orange	Petal Pink	Purple	Recycled Natural	Red	Sky Blue	Sunbrite Yellow
Teal (tint)	White	Wild Rose (tint)					

8½" x 11" Paper Merchandise Bags



Plain Bag Prices: All pricing is per thousand (M) bags.

Bag Color(s)	500	1M < 3 M	3 M < 5 M	5 M < 10 M	> 10 M
NATURAL MG, RECYCLED NATURAL MG					
FLORAL / PATTERN – RANDOM DESIGN					
WHITE MG					
COLORS					
Bags including Ink Printing 1 color/1 side: Except for orders less than 1,000 all pricing is per thousand (M) bags.					
NATURAL MG, RECYCLED NATURAL MG					
FLORAL / PATTERN – RANDOM DESIGN					
WHITE MG					
COLORS					
Bags including Foil Stamping 1 color/1 side: Except for orders less than 1,000 all pricing is per thousand (M) bags.					
NATURAL MG, RECYCLED NATURAL MG					
FLORAL / PATTERN – RANDOM DESIGN					
WHITE MG					
COLORS					

Minimum order for this style of bag is 500 pieces.

All prices are FOB our plant

Multi-color or multi-side printing or foil stamping may be available. Please contact office for feasibility and pricing.

We consider normal case pack of this size bag to be 1,000 pieces.

Approximate Shipping Weight per M: 19#

Plain bags of all types, styles and colors may be combined for volume discounts.

Floral bags are random designs; therefore specific designs or patterns cannot be requested. Swatches shown below are samples of possible designs. Actual designs **will** be different.

Please see page 39 for plate charges.

Available Colors

Black	Cream (tint)	Forest Green (tint)	Lime Green	Misty Gray (tint)	Navy Blue	Natural	Newsprint
							
Oatmeal	Orange	Petal Pink	Purple	Recycled Natural	Red	Sky Blue	Sunbrite Yellow
							
Teal (tint)	White	Wild Rose (tint)	Floral Sample	Floral Sample			
							

12" x 15" Paper Merchandise Bags



Plain Bag Prices: All pricing is per thousand (M) bags.

Bag Color(s)	500	1M < 3 M	3 M < 5 M	5 M < 10 M	> 10 M
NATURAL MG, RECYCLED NATURAL MG					
FLORAL / PATTERN – RANDOM DESIGN					
WHITE MG					
COLORS					
Bags including Ink Printing 1 color/1 side: Except for orders less than 1,000 all pricing is per thousand (M) bags.					
NATURAL MG, RECYCLED NATURAL MG					
FLORAL / PATTERN – RANDOM DESIGN					
WHITE MG					
COLORS					
Bags including Foil Stamping 1 color/1 side: Except for orders less than 1,000 all pricing is per thousand (M) bags.					
NATURAL MG, RECYCLED NATURAL MG					
FLORAL / PATTERN – RANDOM DESIGN					
WHITE MG					
COLORS					

Minimum order for this style of bag is 500 pieces.

All prices are FOB our plant

Multi-color or multi-side printing or foil stamping may be available. Please contact office for feasibility and pricing.

We consider normal case pack of this size bag to be 1,000 pieces.



Approximate Shipping Weight per M: 35#

Plain bags of all types, styles and colors may be combined for volume discounts.

Floral bags are random designs; therefore specific designs or patterns cannot be requested. Swatches shown below are samples of possible designs. Actual designs **will** be different.

Please see page 39 for plate charges.

Available Colors

Black	Cream (tint)	Forest Green (tint)	Lime Green	Misty Gray (tint)	Navy Blue	Natural	Newsprint
							
Oatmeal	Orange	Petal Pink	Purple	Recycled Natural	Red	Sky Blue	Sunbrite Yellow
							
Teal (tint)	White	Wild Rose (tint)					
							

12" x 2³/₄" x 18" Paper Merchandise Bags



Plain Bag Prices: All pricing is per thousand (M) bags.

Bag Color(s)	500	1M < 3 M	3 M < 5 M	5 M < 10 M	> 10 M
NATURAL MG, RECYCLED NATURAL MG					
FLORAL / PATTERN – RANDOM DESIGN					
WHITE MG					
COLORS					
Bags including Ink Printing 1 color/1 side: Except for orders less than 1,000 all pricing is per thousand (M) bags.					
NATURAL MG, RECYCLED NATURAL MG					
FLORAL / PATTERN – RANDOM DESIGN					
WHITE MG					
COLORS					
Bags including Foil Stamping 1 color/1 side: Except for orders less than 1,000 all pricing is per thousand (M) bags.					
NATURAL MG, RECYCLED NATURAL MG					
FLORAL / PATTERN – RANDOM DESIGN					
WHITE MG					
COLORS					

Minimum order for this style of bag is 500 pieces.

All prices are FOB our plant

Multi-color or multi-side printing or foil stamping may be available. Please contact office for feasibility and pricing.

We consider normal case pack of this size bag to be 500 pieces.

Approximate Shipping Weight per M: 52#

Plain bags of all types, styles and colors may be combined for volume discounts.

Floral bags are random designs; therefore specific designs or patterns cannot be requested. Swatches shown below are samples of possible designs. Actual designs will be different.

Please see page 39 for plate charges.

Available Colors

Black	Cream (tint)	Forest Green (tint)	Lime Green	Misty Gray (tint)	Navy Blue	Natural	Newsprint
							
Oatmeal	Orange	Petal Pink	Purple	Recycled Natural	Red	Sky Blue	Sunbrite Yellow
							
Teal (tint)	White	Wild Rose (tint)					
							

14" x 3" x 21" Paper Merchandise Bags



Plain Bag Prices: All pricing is per thousand (M) bags.

Bag Color(s)	500	1M < 3 M	3 M < 5 M	5 M < 10 M	> 10 M
NATURAL MG, RECYCLED NATURAL MG					
FLORAL / PATTERN – RANDOM DESIGN					
WHITE MG					
COLORS					
Bags including Ink Printing 1 color/1 side: Except for orders less than 1,000 all pricing is per thousand (M) bags.					
NATURAL MG, RECYCLED NATURAL MG					
FLORAL / PATTERN – RANDOM DESIGN					
WHITE MG					
COLORS					
Bags including Foil Stamping 1 color/1 side: Except for orders less than 1,000 all pricing is per thousand (M) bags.					
NATURAL MG, RECYCLED NATURAL MG					
FLORAL / PATTERN – RANDOM DESIGN					
WHITE MG					
COLORS					

Minimum order for this style of bag is 500 pieces.

All prices are FOB our plant

Multi-color or multi-side printing or foil stamping may be available. Please contact office for feasibility and pricing.

We consider normal case pack of this size bag to be 500 pieces.

Approximate Shipping Weight per M: 70#

Plain bags of all types, styles and colors may be combined for volume discounts.

Floral bags are random designs; therefore specific designs or patterns cannot be requested. Swatches shown below are samples of possible designs. Actual designs **will** be different.

Please see page 39 for plate charges.

Available Colors

Black	Cream (tint)	Forest Green (tint)	Lime Green	Misty Gray (tint)	Navy Blue	Natural	Newsprint
Oatmeal	Orange	Petal Pink	Purple	Recycled Natural	Red	Sky Blue	Sunbrite Yellow
Teal (tint)	White	Wild Rose (tint)					

16" x 3³/₄" x 24" Paper Merchandise Bags



Plain Bag Prices: All pricing is per thousand (M) bags.

Bag Color(s)	500	1M < 3 M	3 M < 5 M	5 M < 10 M	> 10 M
NATURAL MG, RECYCLED NATURAL MG					
FLORAL / PATTERN – RANDOM DESIGN					
WHITE MG					
COLORS					
Bags including Ink Printing 1 color/1 side: Except for orders less than 1,000 all pricing is per thousand (M) bags.					
NATURAL MG, RECYCLED NATURAL MG					
FLORAL / PATTERN – RANDOM DESIGN					
WHITE MG					
COLORS					
Bags including Foil Stamping 1 color/1 side: Except for orders less than 1,000 all pricing is per thousand (M) bags.					
NATURAL MG, RECYCLED NATURAL MG					
FLORAL / PATTERN – RANDOM DESIGN					
WHITE MG					
COLORS					

Minimum order for this style of bag is 500 pieces.

All prices are FOB our plant

Multi-color or multi-side printing or foil stamping may be available. Please contact office for feasibility and pricing.

We consider normal case pack of this size bag to be 500 pieces.

Approximate Shipping Weight per M: 99#

Plain bags of all types, styles and colors may be combined for volume discounts.

Floral bags are random designs; therefore specific designs or patterns cannot be requested. Swatches shown below are samples of possible designs. Actual designs will be different.

Please see page 39 for plate charges.

Available Colors

Black	Cream (tint)	Forest Green (tint)	Lime Green	Misty Gray (tint)	Navy Blue	Natural	Newsprint
							
Oatmeal	Orange	Petal Pink	Purple	Recycled Natural	Red	Sky Blue	Sunbrite Yellow
							
Teal (tint)	White	Wild Rose (tint)	Floral Sample	Floral Sample			
							

Special Size Paper Merchandise Bags



Plain Bag Prices: All pricing is per thousand (M) bags.

Bag Size and Color	Weight/M	500	1M < 3 M	3 M < 5 M	5 M < 10 M	> 10 M
NATURAL MG 5" x 7½"	9#					
WHITE MG 5" x 7½"	9#					
NATURAL MG 7½" x 10½"	16#					
WHITE MG 7½" x 10½"	16#					
NATURAL MG 10" x 13"	24#					
WHITE MG 10" x 13"	24#					

Bags including Ink Printing 1 color/1 side: Except for orders less than 1,000 all pricing is per thousand (M) bags.

NATURAL MG 5" x 7½"	9#					
WHITE MG 5" x 7½"	9#					
NATURAL MG 7½" x 10½"	16#					
WHITE MG 7½" x 10½"	16#					
NATURAL MG 10" x 13"	24#					
WHITE MG 10" x 13"	24#					

Bags including Foil Stamping 1 color/1 side: Except for orders less than 1,000 all pricing is per thousand (M) bags.

NATURAL MG 5" x 7½"	9#					
WHITE MG 5" x 7½"	9#					
NATURAL MG 7½" x 10½"	16#					
WHITE MG 7½" x 10½"	16#					
NATURAL MG 10" x 13"	24#					
WHITE MG 10" x 13"	24#					

Minimum order for this style of bag is 500 pieces.

All prices are FOB our plant

Multi-color or multi-side printing or foil stamping may be available. Please contact office for feasibility and pricing.

We consider normal case pack of these bag sizes to be 1,000 pieces.
Plain bags of all types, styles and colors may be combined for volume discounts.
Please see page 39 for plate charges.

Available Colors

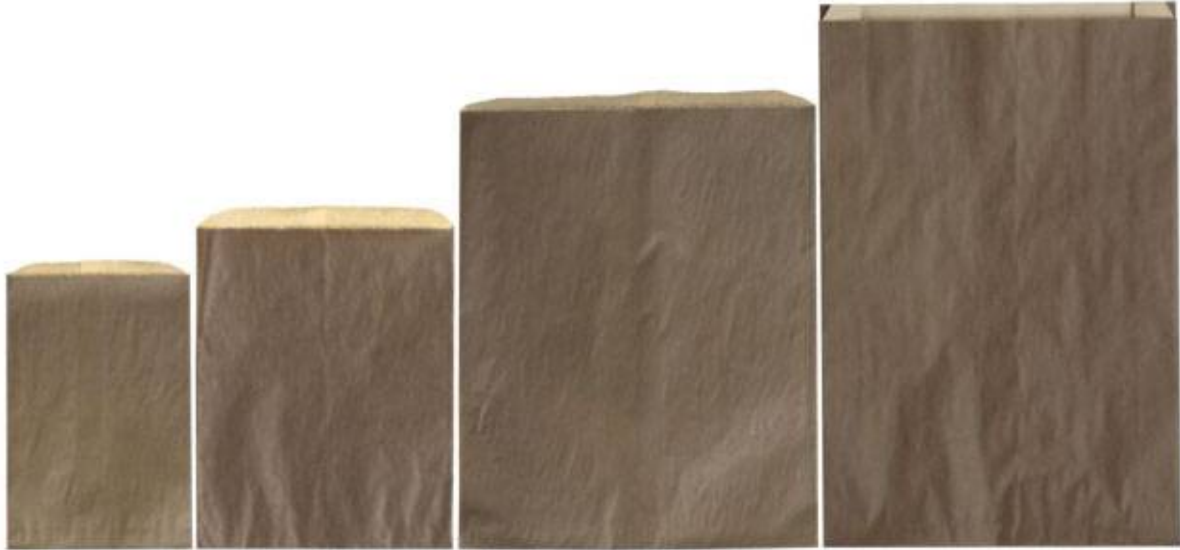
Natural



White



Chocolate Tint on Natural Kraft Paper Merchandise Bags



Plain Bag Prices: All pricing is per thousand (M) bags.						
Bag Size	Weight/M	500	1M < 3 M	3 M < 5 M	5 M < 10 M	> 10 M
6¼" x 9¼"	10#					
8½" x 11"	20#					
12" x 15"	35#					
12" x 2¼" x 18"	52#					
Bags including Ink Printing 1 color/1 side: Except for orders less than 1,000 all pricing is per thousand (M) bags.						
6¼" x 9¼"	10#					
8½" x 11"	20#					
12" x 15"	35#					
12" x 2¼" x 18"	52#					
Bags including Foil Stamping 1 color/1 side: Except for orders less than 1,000 all pricing is per thousand (M) bags.						
6¼" x 9¼"	10#					
8½" x 11"	20#					
12" x 15"	35#					
12" x 2¼" x 18"	52#					

Natural kraft paper merchandise bags fully tinted to listed color. These bags closely match the chocolate kraft tint paper shopping bags shown on page 10.

Minimum order for this style of bag is 500 pieces.

All prices are FOB our plant

Multi-color or multi-side printing or foil stamping may be available. Please contact office for feasibility and pricing.

We consider normal case pack of 6¼ X 9¼ and 8½ X 11 bags to be 1,000 bags.
 We consider normal case pack of 12 X 15 and 12 X 2¼ X 18 bags to be 500 bags.
 Plain bags of all types, styles and colors may be combined for volume discounts.
 Please see page 39 for plate charges.

Colored SOS Bags



Plain Bag Prices: All pricing is per thousand (M) bags.

Bag Size	Weight/M	Bag Color	500	1M < 3 M	3 M < 5 M	5 M < 10 M	> 10 M
#2	14#	Natural					
	14#	White					
	14#	Colors					
#4	20#	Natural					
	20#	White					
	20#	Colors					

Print or hot stamping prices if desired must be added to plain bag prices. All prices except less than 1,000 are per 1,000

Ink Printing 1c/1s Size # 2 & #4	Minimum charge						
Hot Stamping 1c/1s Size # 2 & #4	Minimum charge						
#6	26#	Natural					
	26#	White					
	26#	Colors					
#8	30#	Natural					
	30#	White					
	30#	Colors					
#10	32#	Natural					
	32#	White					
	32#	Colors					
#12	37#	Natural					
	37#	White					
	37#	Colors					

Print or hot stamping prices if desired must be added to plain bag prices. All prices except less than 1,000 are per 1,000

Ink Printing 1c/1s Size # 6 - #12	Minimum charge						
Hot Stamping 1c/1s Size # 6 - #12	Minimum charge						

Minimum order for this style of bag is 500 pieces.

All prices are FOB our plant

Multi-color or multi-side printing or foil stamping may be available. Please contact office for feasibility and pricing. We consider normal case pack of this size bag to be 500 pieces.

Plain bags of all types, styles and colors may be combined for volume discounts. Please see page 39 for plate charges.

Available Colors



Kraft & White Grocery Bags



Plain Bag Prices: All pricing is per thousand (M) bags.

Bag Order Size	Approximate Dimensions	Approximate Weight Per M	Kraft Regular Weight	Kraft Heavy Weight	White Regular Weight
#2	$4\frac{3}{16} \times 2\frac{7}{16} \times 7\frac{7}{8}$	10#			
#3	$4\frac{3}{4} \times 2\frac{15}{16} \times 8\frac{9}{16}$	13#			
#4	$5 \times 3\frac{1}{8} \times 9\frac{3}{4}$	13#			
#5	$5\frac{1}{4} \times 3\frac{7}{16} \times 10\frac{15}{16}$	22#			
#6	$6 \times 3\frac{3}{8} \times 11\frac{1}{16}$	22#			
#8	$6\frac{1}{8} \times 4\frac{1}{16} \times 12\frac{1}{16}$	27#			
#10	$6\frac{5}{16} \times 4\frac{3}{16} \times 13\frac{3}{8}$	29#			
#12	$7\frac{1}{16} \times 4\frac{1}{2} \times 13\frac{3}{4}$	37#			
#16	$7\frac{3}{4} \times 4\frac{13}{16} \times 16$	47#			
#20*	$8\frac{1}{4} \times 5\frac{7}{16} \times 16\frac{1}{8}$	51#			
#25*	$8\frac{1}{4} \times 5\frac{1}{4} \times 18$	57#			
1/8 BBL	$9\frac{11}{16} \times 6 \times 16\frac{3}{8}$	100#			
1/6 BBL	$11 \times 7 \times 18\frac{1}{4}$	120#			

All prices are FOB our plant

*#20 and #25 regular weight kraft bags are available in both short and tall styles
 Dimensions shown are for tall bags. Please specify style on all orders of these size bags
 Basis weight of paper for 1/8 BBL bag is 50#
 Basis weight of paper for 1/6 BBL regular weight bag is 57#
 Basis weight of paper for 1/6 BBL heavy weight bag is 75#
 Basis weight of paper for 1/6 BBL white bag is 60#

Printed Grocery Bags

Ink Printed 1 color/1 side: All pricing is per thousand (M) bags and includes both bag and print.

Bag Order Size	Approximate Dimensions	Approximate Weight Per M	Kraft Regular Weight	Kraft Heavy Weight	White Regular Weight
#16	$7\frac{3}{4} \times 4\frac{13}{16} \times 16$	47#			
#20*	$8\frac{1}{4} \times 5\frac{7}{16} \times 16\frac{1}{8}$	51#			
#25*	$8\frac{1}{4} \times 5\frac{1}{4} \times 18$	57#			
1/8 BBL	$9\frac{11}{16} \times 6 \times 16\frac{3}{8}$	100#			
1/6 BBL	$11 \times 7 \times 18\frac{1}{4}$	120#			

Minimum 500 Per Size.
 For orders of 5,000 or more, deduct 10% from the above prices.
 Order less than 1,000; add 50% to above price.
 Please see page 39 for plate charges.

Printing minimum is 500 per size.
 We do not offer printing services on grocery bags smaller than #16.

High Density Soft Loop Shopping Bags



Plain Bag Prices: All pricing is per thousand (M) bags.

Bag Size	Color	Weight/ Case	< 1 M	1M < 3 M	3 M < 5 M	5 M < 10 M	> 10 M
7" x 3½" x 10½" x 3½" SOS Die Cut Handle	Translucent	9#					
	3 Mil Tint	9#					
8" x 4" x 10" x 4" Soft Loop Shopper	Translucent	15#					
	3 Mil Tint	15#					
	4 Mil Tint	20#					
16" x 6" x 12" x 6" Soft Loop Shopper	Translucent	35#					
	3 Mil Tint	35#					
	4 Mil Tint	43#					
16" x 6" x 18" x 6" Soft Loop Shopper	Translucent	40#					
	3 Mil Tint	40#					
	4 Mil Tint	50#					

Bags including Ink Printing 1 color/1 side: Except for orders less than 1,000 all pricing is per thousand (M) bags.

Bag Size	Color	1 Case	2 Cases	3 Cases	1M < 3 M	3 M < 5 M	5 M < 10 M	> 10 M
7" x 3½" x 10½" x 3½" SOS Die Cut Handle	Translucent							
	3 Mil Tint							
8" x 4" x 10" x 4" Soft Loop Shopper	Translucent							
	3 Mil Tint							
	4 Mil Tint							
16" x 6" x 12" x 6" Soft Loop Shopper	Translucent							
	3 Mil Tint							
	4 Mil Tint							
16" x 6" x 18" x 6" Soft Loop Shopper	Translucent							
	3 Mil Tint							
	4 Mil Tint							

Printed bag pricing for quantities less than 1,000 is priced per case.

All prices are FOB our plant

We do not recommend ink printing the darker colors of these bags and using metallic inks does not always present the best possible image. While it is possible to ink print these bags, we find that large areas of coverage can cause a halo effect. Any logo that crosses a side gusset or the bottom cardboard will have a break in the print. **For best results we suggest that you foil stamp these bags when a custom logo is desired.**

For foil stamping charges please see chart on page 27. Add stamping charges to plain bag price for final cost. Multi-color or multi-side printing or foil stamping may be available. Please contact office for feasibility and pricing. Please see page 39 for plate charges.

All bags of this type are packed 250 bags per case.

All bags have a cardboard reinforced bottom.

Available 3 Mil Colors



Minimum order is one case.

Due to different manufacturer's varying specifications actual bag sizes may differ by up to ¼ inch.

Available 4 Mil Colors



* These colors are Opaque. ** These colors not available in SOS

8x4x10x4 not available in Royal Blue or Green. 16x6x12x6 Scarlet no longer available.

16x6x18x6 no longer available in Green, Royal Blue or White.

Hot Stamp Charges

HIGH DENSITY POLY SHOPPING BAGS

Imprint Area	Minimum Stamping Charge	Price Per Thousand (M)			
		1M < 3 M	3 M < 5 M	5 M < 10 M	> 10 M
Up to 20 Square Inches					
21 to 40 Square Inches					
41 to 60 Square Inches					
61 to 80 Square Inches					
81 to 100 Square Inches					
101 to 120 Square Inches					

Translucent High Density Poly Merchandise Bags



Plain Bag Prices: All pricing is per thousand (M) bags.

Bag Size	Mil	Weight/ Case	Case Pack	250	500	1 M < 2½ M	2½ M < 5 M	> 5 M
9" x 12"	3 Mil	23#	1000					
12" x 15"	3 Mil	37#	1000					
15" x 18"	3 Mil	55#	1000					
16" x 19"	3 Mil	62#	500					
17" x 21"	3 Mil	72#	500					

Bags including Ink Printing 1 color/1 side: Except for orders less than 1,000 all pricing is per thousand (M) bags.

Bag Size	Mil	250	500	1 M < 2½ M	2½ M < 5 M	> 5 M
9" x 12"	3 Mil					
12" x 15"	3 Mil					
15" x 18"	3 Mil					
16" x 19"	3 Mil					
17" x 21"	3 Mil					

Bags including Foil Stamping 1 color/1 side: Except for orders less than 1,000 all pricing is per thousand (M) bags.

Bag Size	Mil	250	500	1 M < 2½ M	2½ M < 5 M	> 5 M
9" x 12"	3 Mil					
12" x 15"	3 Mil					
15" x 18"	3 Mil					
16" x 19"	3 Mil					
17" x 21"	3 Mil					

All prices are FOB our plant.

Large reverses or blocks of coverage are not recommended due to tendency to show a moiré effect.

Multi-color or multi-side printing may be available. Please contact office for feasibility and pricing. Please see page 39 for plate charges.

Tinted High Density Poly Merchandise Bags



Plain Bag Prices: All pricing is per thousand (M) bags.

Bag Size	Mil	Weight/ Case	Case Pack	250	500	1 M < 2½ M	2½ M < 5 M	> 5 M
9" x 12"	3 Mil	23#	1000					
9" x 12"	4 Mil	30#	1000					
12" x 15"	3 Mil	37#	1000					
12" x 15"	4 Mil	48#	1000					
16" x 19"	3 Mil	62#	500					
16" x 19"	4 Mil	70#	500					

Bags including Ink Printing 1 color/1 side: Except for orders less than 1,000 all pricing is per thousand (M) bags.

Bag Size	Mil	250	500	1 M < 2½ M	2½ M < 5 M	> 5 M
9" x 12"	3 Mil					
9" x 12"	4 Mil					
12" x 15"	3 Mil					
12" x 15"	4 Mil					
16" x 19"	3 Mil					
16" x 19"	4 Mil					

Bags including Foil Stamping 1 color/1 side: Except for orders less than 1,000 all pricing is per thousand (M) bags.

Bag Size	Mil	250	500	1 M < 2½ M	2½ M < 5 M	> 5 M
9" x 12"	3 Mil					
9" x 12"	4 Mil					
12" x 15"	3 Mil					
12" x 15"	4 Mil					
16" x 19"	3 Mil					
16" x 19"	4 Mil					

All prices are FOB our plant.

We do not recommend ink printing the darker colors of these bags and using metallic inks does not always present the best possible image. Large reverses or blocks of coverage are also not recommended due to tendency to show a moiré effect. For best results we suggest that you foil stamp these bags when a custom logo is desired.

Available 3 Mil Colors



Available 4 Mil Colors



*Royal Blue and Scarlet no longer available in 9"x12" size.

Please see page 39 for plate charges.

Tinted Low Density Poly Merchandise Bags



Plain Bag Prices: All pricing is per thousand (M) bags.

Bag Size	Style	Color	Weight/ Case	Case Pack	250	500	1 M < 2½ M	2½ M < 5 M	> 5 M
9" x 12"	FODC	White	19#	1000					
9" x 12"	FODC	Colors	19#	1000					
12" x 15"	FODC	White	30#	1000					
12" x 15"	FODC	Colors	30#	1000					
15" x 18"	FODC	White	44#	1000					
15" x 18"	FODC	Colors	44#	1000					
17" x 21"	FODC	White	52#	1000					
17" x 21"	FODC	Colors	52#	1000					
14" x 16"x 6"	Poly Draw	White	46#	500					
14" x 16"x 6"	Poly Draw	Colors	46#	500					
15" x 18" x 4"	FODC	White	52#	500					
15" x 18" x 4" *	FODC	Colors	52#	500					

Bags including Ink Printing 1 color/1 side: Except for orders less than 1,000 all pricing is per thousand (M) bags.

Bag Size	Style	Color	250	500	1 M < 2½ M	2½ M < 5 M	> 5 M
9" x 12"	FODC	White					
9" x 12"	FODC	Colors					
12" x 15"	FODC	White					
12" x 15"	FODC	Colors					
15" x 18"	FODC	White					
15" x 18"	FODC	Colors					
17" x 21"	FODC	White					
17" x 21"	FODC	Colors					
14" x 16"x 6"	Poly Draw	White					
14" x 16"x 6"	Poly Draw	Colors					
15" x 18" x 4"	FODC	White					
15" x 18" x 4" *	FODC	Colors					

* Not available in dusty rose color

All prices are FOB our plant

All bags listed are 2 mil low density poly. Except for the 14" x 16" x 6" the bags are fold over top with die cut handles. The 14" x 16" x 6" bags have a poly tape draw handle.

We do not recommend ink printing the darker colors of these bags and using metallic inks does not always present the best possible image. Large reverses or blocks of coverage are also not recommended due to tendency to show a moiré effect.

Multi-color or multi-side printing or foil stamping may be available. Please contact office for feasibility and pricing. Please see page 39 for plate charges.

Available Colors

Cream



Dusty Rose



White



Yellow



Stock Apparel Boxes



White Gloss Apparel Boxes

Size	Case Weight	Case Pack	< 1 M	1 M	2.5 M	5 M
10 X 7 X 1¼	15#	100				
11½ X 5½ X 1½	15#	100				
11½ X 8½ X 1½	21#	100				
15 X 9½ X 2	31#	100				
17 X 11 X 2½	23#	50				
19 X 12 X 3	29#	50				
24 X 14 X 4	23#	25				

2 piece pop-up box with white gloss exterior and an off white interior. All prices are per hundred, plain boxes

Natural Kraft Shadow Stripe Apparel Boxes

Size	Case Weight	Case Pack	< 1 M	1 M	2.5 M	5 M
10 X 7 X 1¼	12#	100				
11½ X 5½ X 1½	18#	100				
11½ X 8½ X 1½	20#	100				
15 X 9½ X 2	23#	100				
17 X 11 X 2½	18#	50				
19 X 12 X 3	22#	50				
24 X 14 X 4	17#	25				

2 piece natural kraft pop-up box with a natural kraft interior. All prices are per hundred, plain boxes

See page 36 for Print and Hot Stamp charge. Please see page 39 for plate charges.

Drop Ship Apparel Boxes



High Gloss Tint Apparel Boxes

Size	Case Weight	Case Pack	< 1 M	1 M	2.5 M	5 M
11½ X 8½ X 1½	16#	100				
15 X 9½ X 2	23#	100				
17 X 11 X 2½	18#	50				
19 X 12 X 3	22#	50				
24 X 14 X 4	17#	25				

2 piece pop-up gloss tint, tops and bottoms interchangeable, with white interior.

*Colors: Black, Silver and Holiday Red.

All prices are per hundred, plain boxes

Kraft Tint Apparel Boxes*

Size	Case Weight	Case Pack	< 1 M	1 M	2.5 M	5 M
11½ X 8½ X 1½	16#	100				
15 X 9½ X 2	23#	100				
17 X 11 X 2½	18#	50				
19 X 12 X 3	22#	50				
24 X 14 X 4	17#	25				

2 piece pop-up kraft tint, tops and bottoms interchangeable, with kraft interior.

Colors: Black Pinstripe, Oatmeal Pinstripe, Deepwoods Green, Brick Red and Cocoa.

All prices are per hundred, plain boxes

Stock 1 Piece Giftware Boxes

White Gloss Giftware Boxes



1 piece quick lock white gloss giftware boxes

Size	Case Wt.	Pack	< 1M	1M	2.5M	5M
3 X 3 X 2	5#	100				
3 X 3 X 3	6#	100				
4 X 4 X 2	7#	100				
4 X 4 X 4	10#	100				
5 X 5 X 3	11#	100				
6 X 4 1/2 X 4 1/2	15#	100				
6 X 6 X 4	17#	100				
6 X 6 X 6	21#	100				
6 1/2 X 6 1/2 X 1 5/8*	14#	100				
7 X 7 X 7	27#	100				
8 X 8 X 3 1/2	26#	100				
8 X 8 X 6	17#	50				
8 X 8 X 8 1/2	20#	50				
9 X 4 1/2 X 4 1/2	18#	100				
12 X 6 X 6	17#	50				
12 X 12 X 2 1/2*	22#	50				
12 X 12 X 5 1/2*	39#	50				
14 X 6 X 6	19#	50				
14 X 14 X 7 1/2	47#	50				
15 X 7 X 7	25#	50				

*2 piece pop-up style all others are quick lock.

(Prices are per hundred)

Please see page 36 for ink print and hot stamping charges. Please see page 39 for plate charges.

White Set-Up Boxes

No.	Size	Case Wt.	Pack	< 1M	1M	2.5M	5M
270	8 X 8 X 1 1/2	17#	100				
271	9 1/2 X 7 X 5/8	19#	100				
273-A	14 X 3 3/4 X 3/4	17#	100				
273	14 X 4 1/2 X 3/4	19#	100				

White Krome and White Swirl.

All Prices are per hundred, plain boxes

Please see page 36 for ink print and hot stamping charges. Please see page 39 for plate charges.

Stock 1 Piece Natural Kraft Shadow Stripe Giftware Boxes



1 piece quick lock natural kraft with natural kraft interior unless otherwise noted (Prices are per hundred)

Size	Case Wt.	Pack	< 1M	1M	2.5M	5M
3 X 3 X 2	4#	100				
4 X 4 X 2	5#	100				
4 X 4 X 4	7#	100				
5 X 5 X 3	8#	100				
6 X 4½ X 4½	10#	100				
6 X 6 X 4	12#	100				
6 X 6 X 6	15#	100				
6½ X 6½ X 1½*	13#	100				
7 X 7 X 7	20#	100				
8 X 8 X 3½	17#	100				
9 X 4½ X 4½	13#	100				
12 X 6 X 6	12#	50				
12 X 12 X 2½*	19#	50				
12 X 12 X 5½*	27#	50				
14 X 6 X 6	14#	50				

*2 piece pop up

Please see page 36 for ink print and hot stamping charges. Please see page 39 for plate charges.

White Matte Millinery Hat Boxes

Size	Case Wt.	Pack	< 1M	1M	2.5M	5M
12 X 12 X 6 X 2	36#	50				
14 X 14 X 7 X 2	24#	25				
16 X 16 X 7 X 2	29#	25				
18 X 18 X 7 X 2	34#	25				

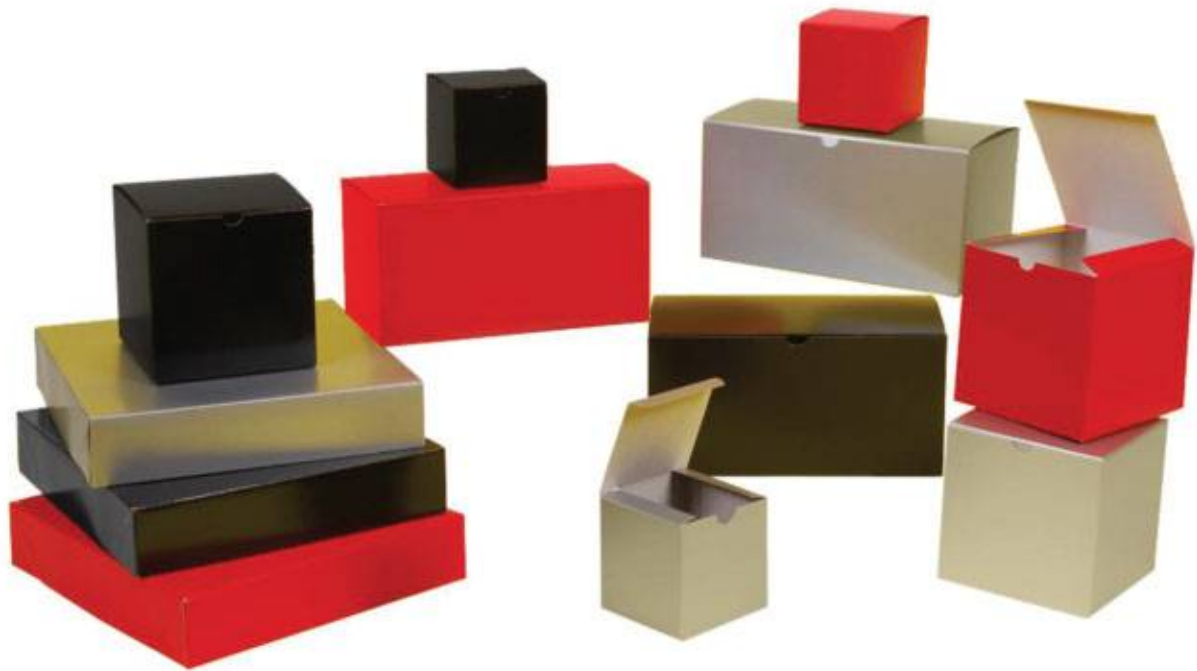
All hat boxes are 2 piece pop-up style.

All Prices are per hundred, plain boxes

Please see page 36 for ink print and hot stamping charges. Please see page 39 for plate charges.

Drop Ship Tinted Giftware Boxes

Tinted Gloss Giftware Boxes



1 piece quick gloss tinted giftware boxes unless otherwise noted.

Size	Case Wt.	Pack	< 1M	1M	2.5M	5M
4 X 4 X 2	5#	100				
4 X 4 X 4	7#	100				
6 X 4½ X 4½	10#	100				
6 X 6 X 4	12#	100				
6 X 6 X 6	15#	100				
8 X 8 X 3½	17#	100				
9 X 4½ X 4½	13#	100				
10 X 10 X 6	17#	50				
12 X 6 X 6	12#	50				
12 X 12 X 2½*	19#	50				
12 X 12 X 5½*	27#	50				
14 X 6 X 6	14#	50				

*2 piece pop-up style all others are quick lock.

(Prices are per hundred)

Colors: Black, Silver and Holiday Red

Please see page 36 for ink print and hot stamping charges. Please see page 39 for plate charges.

Drop Ship Tinted Giftware Boxes

Tinted Kraft Giftware Boxes



1 piece quick-lock matte tinted giftware boxes unless otherwise noted.

Size	Case Wt.	Pack	< 1M	1M	2.5M	5M
3 X 3 X 3	4#	100				
4 X 4 X 2	5#	100				
4 X 4 X 4	7#	100				
5 X 5 X 3	8#	100				
6 X 4½ X 4½	10#	100				
6 X 6 X 4	12#	100				
6 X 6 X 6	15#	100				
8 X 8 X 3½	17#	100				
9 X 4½ X 4½	13#	100				
10 X 5 X 4	15#	100				
10 X 10 X 6	17#	50				
12 X 6 X 6	12#	50				
12 X 12 X 2½*	19#	50				
12 X 12 X 5½*	27#	50				
14 X 6 X 6	14#	50				

*2 piece pop-up style all others are quick lock.

(Prices are per hundred)

Colors: Black Pinstripe, Oatmeal Pinstripe, Deepwoods Green, Brick Red, Deep Purple and Cocoa.

Please see page 36 for ink print and hot stamping charges. Please see page 39 for plate charges.

Stock Jewelry Boxes

Kraft and White Cotton Filled



White Krome, White Swirl and Kraft Jewelry Boxes

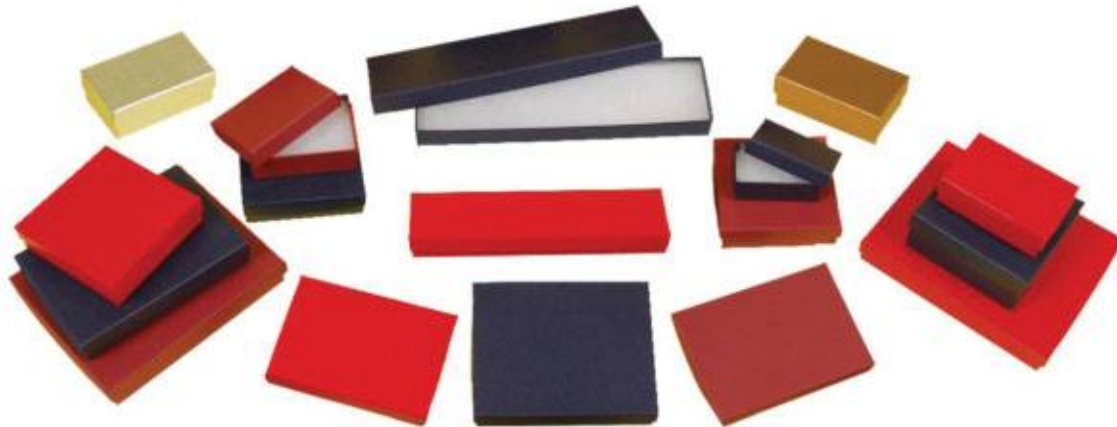
No.	Size	Case Wt.	Pack	< 1M	1M	2.5M	5M
11*	1 ³ / ₄ X 1 ¹ / ₈ X ⁵ / ₈	2#	100				
21	2 ¹ / ₂ X 1 ¹ / ₂ X ⁷ / ₈	3#	100				
32	3 ¹ / ₁₆ X 2 ¹ / ₈ X 1	4#	100				
33	3 ¹ / ₂ X 3 ¹ / ₂ X 1	6#	100				
33D*	3 ¹ / ₂ X 3 ¹ / ₂ X 1 ¹ / ₂	7#	100				
34*	3 ¹ / ₂ X 3 ¹ / ₂ X 2	8#	100				
53	5 ¹ / ₄ X 3 ³ / ₄ X ⁷ / ₈	8#	100				
65*	6 X 5 X 1	7#	50				
75	7 X 5 ¹ / ₂ X 1	8#	50				
82A	8 X 2 X ⁷ / ₈	8#	100				
85	8 X 5 ¹ / ₂ X 1 ³ / ₄	9#	50				

All Prices are per hundred, plain boxes

* These items are non-stock items in natural kraft. Please allow 3-4 weeks for delivery if ordered.

All above boxes are plain cotton filled jewelry boxes and priced per hundred. They cannot be ink printed if custom imprint is desired. They must be hot stamped. Please see page 36 for hot stamping charges. Please see page 39 for plate charges.

Drop Jewelry Boxes



Gloss and Matte Tint Jewelry Boxes

No.	Size	Case Wt.	Pack	< 1M	1M	2.5M	5M
11	1 ³ / ₄ X 1 ¹ / ₈ X 3 ³ / ₈	2#	100				
21	2 ¹ / ₂ X 1 ¹ / ₂ X 7 ⁷ / ₈	3#	100				
32	3 ¹ / ₁₆ X 2 ¹ / ₈ X 1	4#	100				
33	3 ¹ / ₂ X 3 ¹ / ₂ X 1	6#	100				
33D	3 ¹ / ₂ X 3 ¹ / ₂ X 1 ¹ / ₂	7#	100				
34	3 ¹ / ₂ X 3 ¹ / ₂ X 2	8#	100				
53	5 ¹ / ₄ X 3 ³ / ₄ X 7 ⁷ / ₈	8#	100				
65	6 X 5 X 1	7#	50				
75	7 X 5 ¹ / ₂ X 1	8#	50				
82A	8 X 2 X 7 ⁷ / ₈	8#	100				
85	8 X 5 ¹ / ₂ X 1 ³ / ₄	9#	50				

All Prices are per hundred, plain boxes

Gloss Colors: Gloss Black, Gloss Cherry Red, Gold Linen and Silver Linen.

Matte Colors: Black Kraft Pinstripe, Oatmeal Groove, Cocoa, Deepwoods Green, Midnight Blue, Navy Blue, Jade, Orange and Deep Purple.

PRINTING & HOT STAMPING CHARGES

Ink Printing Charge ● Gift and Apparel Boxes

Sizes using the same plate may be combined for volume discounts

(Prices are per hundred boxes)

Box style	Minimum Charge	1 M	3 M	5 M
1 piece quick lock				
2 piece gift or apparel box				

Printing prices are based on copy position in center of box top only. Other plate positioning may require special quote. Printing top and bottom is double the regular printing price, but volume discounts would apply. Different copy will require a plate change charge of \$17.00.

Hot Stamping Charge ● Gift and Apparel Boxes

Sizes using the same plate may be combined for volume discounts

(Prices are per hundred boxes)

Box style	Minimum Charge	1 M	3 M	5 M
1 piece quick lock				
2 piece gift or apparel box				

Hot Stamping Charge ● Jewelry Boxes and Setup Boxes

Sizes using the same plate may be combined for volume discounts

(Prices are per hundred boxes)

Box style	Minimum Charge	1 M	3 M	5 M
2 piece box				

Hot stamping prices are based on copy position in center of box top only. Other plate positioning may require a special quote. Printing top and bottom is double the regular printing price, but volume discounts would apply. Different copy will require a plate change charge of \$17.00

Printing and Hot Stamping prices above are only for our STOCK apparel, giftware and jewelry boxes. If printing or hot stamping is desired on any drop ship products, each request must be handled as a custom quote.

Post Printing Information

The short run post printing and hot stamping service offered in this catalog is a hand fed, one piece at a time operation that is done on post converted bags and boxes. Because of this we can offer very short quantities of your custom imprinted products with lead times normally shorter than a large converter's, and a rush program. There are certain limitations associated with this type of printing that need to be considered when designing your custom logo. Because of this type of printing we recommend printing in the lower two-thirds of the bag. We must stay away from the handles of all shopping bags a minimum of 1½ inches for best results. Close registration multi-color logos must meet our limitations in order to be printed. We recommend hot stamping instead of ink printing all high gloss paper bags, and all laminated eurototes must be foil stamped if a custom logo is desired. Solid blocks of coverage and large blocks with reverse outs, screens and half tones are not always possible. All artwork must be approved by our art department prior to acceptance of any order.

Plates: Ink printing plates are \$1.30 per square inch and hot stamping plates are \$20.00 per copy plus \$3.50 per square inch. To determine the square inch area of a plate for printing or hot stamping, draw a box around the desired logo keeping the box parallel to the sides and the bottom of the bags. Add ½ inch to the height and length of the box and multiply the two numbers together to get the total square inches of the logo.

We possibly can use your existing plates if the ink plates are photopolymer or rubber, with a reverse image, at least .107 inch thick and have a sticky back.

For foil stamping we use ¼ inch thick magnesium plates. We could possibly use customer supplied magnesium plates if they are at least ¼ inch thick. We reserve the right to make any modifications we feel are necessary to obtain the best possible image on all customer supplied plates.

Our plate charges are one time charges. We will replace at no cost to you any plate we make that wears out. Replacement of customer supplied plates is the responsibility of the customer.

We normally keep all plates on file for a period of three years. Customer is responsible for freight for all returned or forwarded plates.

Ink Colors: We stock a wide variety of stock ink colors as shown below. These are standard PMS colors. Due to the reaction of the inks with the dye and natural color of the product, the finished products may not exactly match the normal PMS shade.



We also offer the below list of colors at an up charge of \$20.00 per order. However for best results with these colors we recommend that you consider having them foil stamped.



If an exact color match is desired, special ink can be purchased to match a particular shade. Special inks are invoiced at cost, plus freight. If a non-stock ink PMS color is required, a minimum of 1 gallon must be purchased. The normal shelf life on an ink is approximately 2 years. Customer will be invoiced for any reorder of their custom ink when necessary.

Foil Color: We offer 60 colors of hotstamp foils, including metallic, gloss pigment or matte pigment colors as shown below:

Metallic Colors:



Gloss Pigments:



Matte Pigments:



Please note that all foil colors or types may not work on all substrates. Gloss pigment foils will not work on laminated eurototes or high density poly bags. Other foil colors may be available; however custom colors are not possible.

Although we have made every effort to recreate all colors as closely as possible to the actual colors, please be aware that there may be some difference between the colors shown in this catalog and the actual product colors.

Colors may also vary slightly from one manufacturing run to another.

Guidelines for Bag Imprint Areas

Paper Merchandise Bags

Bag Size	Plate Size
6¼" x 9¼"	4½"w x 5"h
8½" x 11"	6½"w x 6½"h
12" x 15"	9"w x 9"h
12" x 3" x 18"	9"w x 10"h
14" x 3" x 21"	11"w x 12"h
16" x 3" x 24"	12"w x 12"h



Printable Poly Bags

Bag Size	Plate Size
Litter Bag	6"w x 5"h
9" x 12"	6½"w x 6½"h
12" x 15"	9½"w x 8"h
15" x 18"	12"w x 11"h
16" x 19"	12"w x 11½"h
17" x 21"	12"w x 12"h
14" x 16" x 6"	11"w x 6"h

Paper Shopping Bags

Bag Size	Plate Size
5" x 3" x 8"	3½"w x 5½"h
8" x 5" x 10"	6"w x 5"h
9" x 5" x 13"	6½"w x 7"h
10" x 5" x 13"	7"w x 7"h
16" x 6" x 12"	9½"w x 6"h
13" x 7" x 17"	8"w x 8½"h
14" x 8" x 14"	9"w x 7"h
14" x 10" x 15"	9"w x 7"h
16" x 6" x 16"	9½"w x 7"h
16" x 6" x 19"	10"w x 10"h
18" x 7" x 18"	11"w x 10"h



Grocery & SOS Bags

Bag Size	Plate Size
2#	3"w x 3"h
4#	3½"w x 4½"h
6#	4"w x 6"h
8#	5"w x 7"h
10#	5"w x 7½"h
12#	5½"w x 8"h
16#	6"w x 8½"h
20# Tall	6½"w x 8½"h
25# Tall	7"w x 9"h
1/6 BBL	8½"w x 9"h

Hot Stamp *(If hot stamping merchandise bags refer to the above sizes.)*

Bag Size	8" x 5" x 10"	16" x 6" x 12"	16" x 6" x 19"
Plate Size	6½"w x 6"h	14"w x 7"h	14"w x 10"h

PRECIOUS METALS

Made in USA 



Natural Kraft shopping bags are made from 50% recycled fiber.



color	toucan	chimp	jaguar	zebra
Copper Penny	S41020	S41160	S41170	S41180
Hi Ho Silver	S41016	S41190	S41220	S41210
Gold Rush	S41017	S41230	S41240	S41250

PRECIOUS METALS ON NATURAL KRAFT

size	item#	name	case pack	wt./case	1-9 cases (ea)	10-24 cases (ea)	25+ cases (ea)
5-1/2 x 3-1/4 x 8-3/8	see chart	Toucan	250	20#			
8 x 4-3/4 x 10-1/2	see chart	Chimp	250	29#			
16 x 6 x 13	see chart	Jaguar	250	43#			
16 x 6 x 19-1/4	see chart	Zebra	200	47#			

BRIGHT WHITE & GLOSS COLORS

Made in USA 

IMPRINT ME! May be hot stamped. See pp.127-130.

color	chimp	jaguar
Fire Engine Red	S51620	S51630
Midnight Black	S51650	S51660
Platinum Silver (met.)	S60800	S60810



BRIGHT WHITE GLOSS

size	item#	name	case pack	wt./case	max print	1-9 cases (ea)	10-24 cases (ea)	25+ cases (ea)
8 x 4-3/4 x 10-1/2	S51490	Chimp	250	29#	6 x 5			
16 x 6 x 13	S51600	Jaguar	250	43#	10 x 6-1/2			
16 x 6 x 19-1/4	S51610	Zebra	200	47#	12 x 9			

GLOSS COLORS

size	item#	name	case pack	wt./case	max print	1-9 cases (ea)	10-24 cases (ea)	25+ cases (ea)
8 x 4-3/4 x 10-1/2	see chart	Chimp	250	29#	6 x 5			
16 x 6 x 13	see chart	Jaguar	250	43#	10 x 6-1/2			

GEO TRIO COLLECTION

Made in USA 



Bags made from 40% post consumer waste recycled natural kraft.

Box covering made from 70% post consumer waste recycled natural kraft.



Treasure Boxes have a one piece auto bottom and attached side wall snap lock lid creating a colorful, vibrant way to pack treats, meals, gifts & more!

LOWER PRICES!

GEO TRIO COLLECTION

size	item #	name	case pack	wt./case	1-9 cases	10-24 cases	25+ cases
5-1/2 x 3-1/4 x 8-3/8	S90199	toucan – cubes	250	20#			
8 x 4-3/4 x 10-1/2	S90200	chimp – dots	250	29#			
8 x 4-3/4 x 10-1/2	S90201	chimp – zig zag	250	29#			
16 x 6 x 13	S90202	jaguar – zig zag	250	43#			
8 x 4-7/8 x 5-1/4	B41082	8" gable box – dots	100	18#			
8 x 4-7/8 x 5-1/4	B41083	8" gable box – zig zag	100	18#			
4 x 4 x 4	B41084	treasure box-small	100	8#			
8 x 5 x 5-1/2	B41085	treasure box-large	100	14#			

NEWSPRINT COLLECTION

Made in USA 



Bags made from 40% post consumer waste recycled natural kraft.

Box covering and Merchandise Bags made from 70% post consumer waste recycled natural kraft.



LOWER PRICES!

NEWSPRINT COLLECTION

size	item #	name	case pack	wt./case	1-9 cases	10-24 cases	25+ cases
5-1/2 x 3-1/4 x 8-3/8	S90203	toucan	250	20#			
8 x 4-3/4 x 10-1/2	S90204	chimp	250	29#			
16 x 6 x 13	S90205	jaguar	250	43#			
8 x 4-7/8 x 5-1/4	B41086	8" gable box	100	18#			
8-1/2 x 11	S66026	merchandise bag-small	1000	44#			
11-1/2 x 3 x 18	S66027	merchandise bag-large	500	25#			

RECYCLED KRAFT SHOPPING BAGS

IMPRINT ME! May be hot stamped. See pp.127-130.



S90210
jaguar

S90208
toucan

S90209
chimp

NEW! WINTER BRANCHES 

Tissue shown:
Cherry Red T10237



S90178
toucan

S90180
jaguar

S90179
chimp

SANTA STRIPE 

Tissue shown:
Merry Merry T10724
Kelly Green T10085



Snowflakes
S90187
chimp



Trees
S90186
chimp



Snowman
S90185
chimp

CHRISTMAS CHIMPS 

Tissue shown:
Iris T10241
Lavender T10093
Citrus Green T10076



S90159 jaguar

S90162 crane

S90066 chimp

S90054 toucan

S90070 jaguar

S90152 chimp

S90144 toucan

SNOWBIRDS/KRAFT 

Tissue shown:
Kelly Green T10085

HOMESPUN CHRISTMAS/KRAFT 

Tissue shown:
Scarlet T10081



Chevron
S90194
chimp

S90195
toucan

S90192
jaguar

Dots
S90193
chimp

CHRISTMAS DOTS & CHEVRON/KRAFT 

Tissue shown:
Cherry Red T10237
Kelly Green T10085
Merry Merry T10724

RECYCLED KRAFT SHOPPING BAGS

size	item#	description	case pack	wt./case	max print	1-9 cases	10-24 cases	25+ cases
5-1/2 x 3-1/4 x 8-3/8	see photos	toucan	100	7#	4 x 4-1/2			
5-1/2 x 3-1/4 x 12-1/2	see photos	crane	100	8#	4 x 7			
8 x 4-3/4 x 10-1/2	see photos	chimp	100	12#	6 x 5			
16 x 6 x 13	see photos	jaguar	100	19#	10 x 6-1/2			

RECYCLED KRAFT SHOPPING BAGS



IMPRINT ME! May be hot stamped. See pp.127-130.



Snowman
S90211 chimp



Birdie
S90212 chimp



'tis the Season
S90213 chimp

Deck the Halls
S90214 chimp

NEW! CHILLY CHUMS

Tissue shown:
Black Dots/White T10736
Citrus Green T10076

NEW! CHRISTMAS NIGHT
(SILK SCREENED)

Tissue shown:
Red Gingham Check T10771



S90215 chimp



S90217
chimp



S90218
jaguar



S90216
toucan

NEW! BURLAP SNOWFLAKE
(HOT STAMPED)

Tissue shown:
Black Gingham Check T10772

NEW! BURLAP

Tissue shown:
Cornflower T10758



Periwinkle
S90189
chimp



S90191
toucan

S90188
jaguar



BUBBLES/PERIWINKLE

Tissue shown:
Turquoise T10110
Lavender T10093



Bubbles
S90190
chimp



S90176
chimp

S90177
jaguar

S90175
toucan

BERRY BRANCHES 
Tissue shown:
Limon T10074



S90171
jaguar

CHIC LINK 
Tissue shown:
Apricot T10235

S90169
toucan



S90071
jaguar

S90067
chimp

S90055
toucan

LEAVES & BERRIES/KRAFT 
Tissue shown:
Pistachio T10244



S90124
toucan

S90127
gazelle

S90125
chimp

KENSINGTON PLAID/KRAFT 
with Shadow Stripe
Tissue shown:
Aloe T10379

RECYCLED KRAFT SHOPPING BAGS

size	item#	description	case pack	wt./case	max print	1-9 cases	10-24 cases	25+ cases
5-1/2 x 3-1/4 x 8-3/8	see photos	toucan	100	7#	4 x 4-1/2			
8 x 4-3/4 x 10-1/2	see photos	chimp	100	12#	6 x 5			
13 x 6 x 15-3/4	see photos	gazelle	100	19#	9 x 8			
16 x 6 x 13	see photos	jaguar	100	19#	10 x 6-1/2			

RECYCLED KRAFT SHOPPING BAGS

IMPRINT ME! May be hot stamped. See pp.127-130.



Greek Key
S90168
chimp



Red/White Circles
S90167
chimp



Spring Leaf
S90164
chimp



Lime Chevron
S90181
chimp



Red Chevron
S90182
chimp



Orange Chevron
S90166
chimp



Black Chevron
S90165
chimp

RECYCLED KRAFT SHOPPING BAGS

size	item#	description	case pack	wt./case	max print	1-9 cases	10-24 cases	25+ cases
8 x 4-3/4 x 10-1/2	see photos	chimp	100	12#	6 x 5			

PAPER SHOPPING BAGS



IMPRINT ME! May be hot stamped. See pp.127-130.



Tissue shown:
Cool Mint T10098

S90142
toucan

S90157
jaguar

POLKA DOT PEARL

S90150
chimp



S90174
jaguar

S90173
chimp

S90172
toucan

ELEGANT FLOURISH

Tissue shown:
Pearlescence™ Sun Gold T10225



S90122
crane

S90120
toucan

BOLD SCROLL

Tissue shown:
Citrus Green T10076

S90123
jaguar

S90121
chimp

PRINTED PAPER SHOPPING BAGS

size	item#	description	case pack	wt./case	max print	1-9 cases	10-24 cases	25+ cases
5-1/2 x 3-1/4 x 8-3/8	see photos	toucan	100	7#	4 x 4-1/2			
5-1/2 x 3-1/4 x 12-1/2	see photos	crane	100	8#	4 x 7			
8 x 4-3/4 x 10-1/2	see photos	chimp	100	12#	6 x 5			
16 x 6 x 13	see photos	jaguar	100	19#	10 x 6-1/2			

PAPER SHOPPING BAGS

Made in USA 

IMPRINT ME! May be hot stamped. See pp.127-130.



S90154 jaguar

S90147 chimp

S90139 toucan

S90146 chimp

BOLD FLORAL/CHEVRON

Tissue shown:
Citrus Green T10076



Moroccan Tile
S90148 chimp

Make a Splash
S90117 chimp

Cheery Dots
S90080 chimp

Domino Dots
S90097 chimp

Contempo Canes
S90115 chimp



S90160 jaguar

S90163 crane

S90153 chimp

S90145 toucan

SNOWFLAKE SWIRL/WATERFALL

Tissue shown:
Sky Blue T10109



MOD ORNAMENTS/ORNAMENTAL STRIPE

Tissue shown:
Pistachio T10244

CHRISTMAS LACE

Tissue shown:
Ruby Gemstones T10447



CHRISTMAS CHECK/SNOWFLAKE BLING

Tissue shown:
Kelly Green T10085

PRINTED PAPER SHOPPING BAGS

size	item#	description	case pack	wt./case	max print	1-9 cases	10-24 cases	25+ cases
5-1/2 x 3-1/4 x 8-3/8	see photos	toucan	100	7#	4 x 4-1/2			
5-1/2 x 3-1/4 x 12-1/2	see photos	crane	100	8#	4 x 7			
8 x 4 x 8	see photos	lynx	100	7#	6 x 3			
8 x 4-3/4 x 10-1/2	see photos	chimp	100	12#	6 x 5			
16 x 6 x 13	see photos	jaguar	100	19#	10 x 6-1/2			

RECYCLED PAPER EUROTOTES (150 GSM)



Natural Kraft interior on all except white totes.

Solid color eurototes are made of paper with a recycled content of at least 80%.
 White eurototes are made of paper with a recycled content of at least 50%.
 The handles are made of recycled polyester grosgrain.



	handle & tote color	Mini Cub	Cub	Large Vogue
<i>New</i>	Brown	S33022	S33028	
	Red	S33056	S33057	S33059
	Black	S33023	S33029	S33041
	Jungle Green	S33024	S33030	S33042
	White	S33025	S33031	
	Natural Kraft*	S33026	S33032	S33044
	Platinum (metallic)	S33027	S33033	S33045

*natural kraft tote has white handles

size	item#	name	case pack	wt./case	max print	1-9 cases (ea)	10-24 cases (ea)	25+ cases (ea)
6 x 3-1/2 x 6-1/2 x 3-1/2	see chart	Mini Cub	25	2#	4-1/2 x 3			
8 x 4 x 10 x 4	see chart	Cub	25	3#	6 x 5			
16 x 6 x 12 x 6	see chart	Large Vogue	25	7#	10 x 6			

NEW! ECONOMY SONIC WELD NON-WOVEN TOTES (80 GSM) WITH BOTTOM GUSSETS



80 gsm recycled polypropylene.
Reusable and recyclable.



White



Black



Hunter



Red



Royal



15 x 15 + 5



16 x 12 + 6



22 x 17 + 6



20 x 16 + 6

	15 x 15 + 5	16 x 12 + 6	20 x 16 + 6	22 x 17 + 6
color	28" handle	28" handle	28" handle	28" handle
White	S56000	S56005	S56010	S56015
Black	S56001	S56006	S56011	S56016
Hunter	S56002	S56007	S56012	S56017
Red	S56003	S56008	S56013	S56018
Royal	S56004	S56009	S56014	S56019

NEW! PRICING FOR UNPRINTED BAGS

size	handle	item#	case pack	wt./case	max print	1-9 cases (ea)	10-24 cases (ea)	25+ cases (ea)
15 x 15 + 5	28"	see chart	100	9#	10 x 10			
16 x 12 + 6	28"	see chart	100	8#	10 x 8			
20 x 16 + 6	28"	see chart	100	13#	13 x 10			
22 x 17 + 6	28"	see chart	100	14#	13 x 10			

NEW! ECONOMY SONIC WELD NON-WOVEN TOTES (80 GSM) WITH BOTTOM AND SIDE GUSSETS



80 gsm recycled polypropylene.
Reusable and recyclable.



White



Black



Hunter



Red



Royal



11-1/2 x 3-1/2 x 13 x 3-1/2



10 x 4-1/4 x 11 x 4-1/4



16 x 6 x 12 x 6



11-3/4 x 4 x 9-1/2 x 4



10 x 4-1/2 x 13 x 4-1/2



13 x 6-3/4 x 15 x 6-3/4

	10 x 4-1/4 x 11 x 4-1/4	11-3/4 x 4 x 9-1/2 x 4	11-1/2 x 3-1/2 x 13 x 3-1/2	13 x 6-3/4 x 15 x 6-3/4	10 x 4-1/2 x 13 x 4-1/2	16 x 6 x 12 x 6
color	18" handle	18" handle	18" handle	18" handle	18" handle	18" handle
White	S56020	S56025	S56030	S56035	S56040	S56045
Black	S56021	S56026	S56031	S56036	S56041	S56046
Hunter	S56022	S56027	S56032	S56037	S56042	S56047
Red	S56023	S56028	S56033	S56038	S56043	S56048
Royal	S56024	S56029	S56034	S56039	S56044	S56049

NEW! PRICING FOR UNPRINTED BAGS

size	handle	item#	case pack	wt./case	max print	1-9 cases (ea)	10-24 cases (ea)	25+ cases (ea)
10 x 4-1/4 x 11 x 4-1/4	18"	see chart	100	7#	6 x 8			
11-3/4 x 4 x 9-1/2 x 4	18"	see chart	100	7#	7 x 6			
11-1/2 x 3-1/2 x 13 x 3-1/2	18"	see chart	100	7#	7 x 8			
13 x 6-3/4 x 15 x 6-3/4	18"	see chart	100	11#	9 x 9			
10 x 4-1/2 x 13 x 4-1/2	18"	see chart	100	9#	6 x 8			
16 x 6 x 12 x 6	18"	see chart	100	14#	10 x 8			

NON-WOVEN GROCERY BAGS



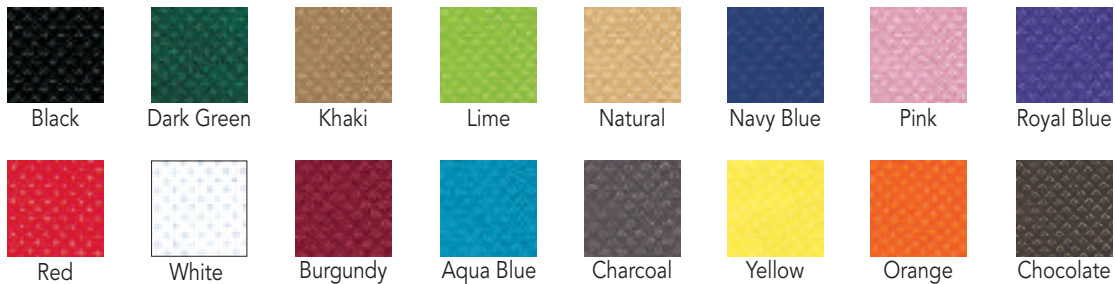
100 gsm recycled polypropylene.
Reusable and recyclable.



20" reinforced handles.
8" or 10" gussets for bulky items.
Plain black vinyl bottom insert.

Please note the color Pink is only available while supplies last.
A new, Dark Pink color will replace current stock.

color	12 x 8 x 13 20" handle	13 x 10 x 15 20" handle
Black	S55006	S55029
Dark Green	S55007	S55030
Khaki	S55008	S55031
Lime	S55009	S55032
Natural	S55010	S55033
Navy Blue	S55011	S55034
Pink	S55012	S55035
Royal Blue	S55013	S55036
Red	S55014	S55037
White	S55015	S55038
Burgundy	S55097	S55101
Aqua Blue	S55098	S55102
Charcoal	S55099	S55103
Yellow	S55100	S55104
Orange	S55105	S55107
Chocolate	S55106	S55108



NEW! PRICING FOR UNPRINTED BAGS

size	handle	item#	case pack	wt./case	max print	1-9 cases (ea)	10-24 cases (ea)	25+ cases (ea)
12 x 8 x 13	20"	see chart	100	24#	5 x 8			
13 x 10 x 15	20"	see chart	100	29#	5-3/4 x 10			

NON-WOVEN TOTE BAGS



100 gsm recycled polypropylene.
Reusable and recyclable.



16 x 6 x 12



16 x 6 x 12



8 x 5 x 10



13 x 5 x 13



20 x 6 x 16



15 x 16

color	8 x 5 x 10 14" handle	13 x 5 x 13 18" handle	15 x 16 28" handle	16 x 6 x 12 18" handle	16 x 6 x 12 28" handle	20 x 6 x 16 28" handle
Aqua Blue		S55016		S55057	S55044	S55070
Black	S55133	S55017	S55039	S55058	S55045	S55071
Chocolate		S55018		S55059	S55046	S55072
Dark Green		S55019	S55040	S55060	S55047	S55073
Khaki		S55020		S55061	S55048	S55074
Lime		S55021		S55062	S55049	S55075
Orange		S55022		S55063	S55050	S55076
Pink	S55179	S55023		S55064	S55051	
Purple		S55024		S55065	S55052	S55078
Royal Blue	S55134	S55025	S55041	S55066	S55053	S55079
Red	S55135	S55026		S55067	S55054	S55080
White	S55136	S55027	S55043	S55068	S55055	S55081
Yellow		S55028		S55069	S55056	S55082
Charcoal	S55137	S55120	S55122	S55124	S55126	S55128

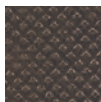
Please note the color Pink is only available while supplies last. A new, Dark Pink color will replace current stock.



Aqua Blue



Black



Chocolate



Dark Green



Khaki



Lime



Orange



Pink



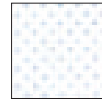
Purple



Royal Blue



Red



White



Yellow



Charcoal

NEW! PRICING FOR UNPRINTED BAGS

size	handle	item#	case pack	wt./case	max print	1-9 cases (ea)	10-24 cases (ea)	25+ cases (ea)
8 x 5 x 10	14"	see chart	100	8#	5 x 5			
13 x 5 x 13	18"	see chart	100	13#	7 x 9			
15 x 16	28"	see chart	100	12#	10 x 12			
16 x 6 x 12	18"	see chart	100	14#	12 x 8			
16 x 6 x 12	28"	see chart	100	15#	12 x 8			
20 x 6 x 16	28"	see chart	100	20#	10 x 12			

NON-WOVEN WINE TOTES



100 gsm recycled polypropylene.
Reusable and recyclable.



Black



Burgundy



Natural

	4 x 16 1 bottle die-cut	7 x 3-1/2 x 11 2 bottle 20" handle	7 x 7 x 11 4 bottle 20" handle	10 x 7 x 11 6 bottle 36" handle
color				
Black	S55186	S55178	S55093	S55095
Burgundy			S55094	S55096
Natural			S55130	S55131

New tote!



Sewn-in bottle divider.

NEW! PRICING FOR UNPRINTED BAGS

	size	handle	item#	case pack	wt./case	max print	1-9 cases (ea)	10-24 cases (ea)	25+ cases (ea)
New	4 x 16	N/A	see chart	100	14#	3-1/2 x 5			
	7 x 3-1/2 x 11	20"	see chart	100	16#	4 x 4			
	7 x 7 x 11	20"	see chart	100	17#	4 x 4			
	10 x 7 x 11	36"	see chart	100	20#	2-1/2 x 5			

NON-WOVEN ECONO GROCERY TOTES

IMPRINT ME! May be hot stamped and silk screened. See p.67.



60 gsm recycled polypropylene.
Reusable and recyclable.
Plain black vinyl bottom insert.

color	12 x 8 x 13 18" handle
Red	S55112
Black	S55113
Dark Green	S55114
Natural	S55115
Royal Blue	S55116



Red



Black



Dark Green



Natural



Royal Blue



NEW! PRICING FOR UNPRINTED BAGS

size	handle	item#	case pack	wt./case	max print	1-9 cases (ea)	10-24 cases (ea)	25+ cases (ea)
12 x 8 x 13	18"	see chart	100	15#	8 x 5			

NON-WOVEN THERMO LUNCH TOTES

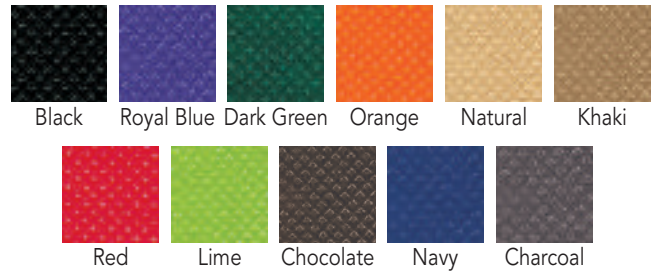


100 gsm recycled polypropylene. Reusable and recyclable. Thermal insulation keeps food cold or hot for hours. Zipper closure. 3-1/2" x 2" clear ID holder pocket. Side zip pocket.



8 x 6 x 8-1/2

color	16" handle
Black	S55090
Royal Blue	S55092
Dark Green	S55177
Orange	S55176
Natural	S55170
Khaki	S55091
Red	S55173
Lime	S55175
Chocolate	S55171
Navy	S55172
Charcoal	S55174



NEW! PRICING FOR UNPRINTED BAGS

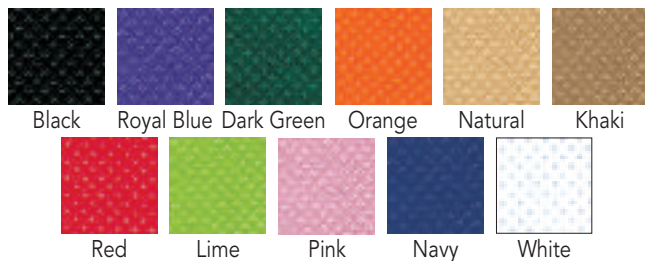
size	handle	item#	case pack	wt./case	max print	1-9 cases (ea)	10-24 cases (ea)	25+ cases (ea)
8 x 6 x 8-1/2	16"	see chart	50	10#	5-1/2 x 3-1/2			

NON-WOVEN THERMO TOTES



100 gsm recycled polypropylene. Reusable and recyclable. Thermal insulation keeps food cold or hot for hours. Zipper closure.

color	12 x 8 x 13 20" handle	13 x 10 x 15 20" handle
Black	S55148	S55083
Royal Blue	S55150	S55086
Dark Green	S55149	S55084
Orange	S55147	S55166
Natural	S55151	
Khaki		S55085
Red		S55161
Lime		S55162
Pink		S55163
Navy		S55164
White	S55152	S55165



Please note the color Pink is only available while supplies last. A new, Dark Pink color will replace current stock.



NEW! PRICING FOR UNPRINTED BAGS

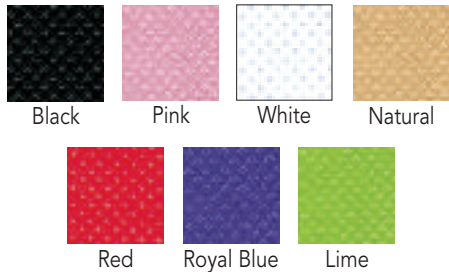
size	handle	item#	case pack	wt./case	max print	1-9 cases (ea)	10-24 cases (ea)	25+ cases (ea)
12 x 8 x 13	20"	see chart	50	19#	5 x 8			
13 x 10 x 15	20"	see chart	50	24#	5-3/4 x 10			

Note: White bags come with a white PVC bottom board; all other colors have a black PVC bottom board.

NON-WOVEN UNIVERSAL TOTES



100 gsm recycled polypropylene.
Reusable and recyclable.



16-1/2 x 4-1/2 x 13-1/2

color	15" handle
Black	S55087
Pink	S55109
White	S55110
Natural	S55111
Red	S55180
Royal Blue	S55181
Lime	S55182



Adjustable drawstring.

Please note the color Pink is only available while supplies last. A new, Dark Pink color will replace current stock.



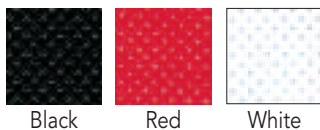
NEW! PRICING FOR UNPRINTED BAGS

size	handle	item#	case pack	wt./case	max print	1-9 cases (ea)	10-24 cases (ea)	25+ cases (ea)
16-1/2 x 4-1/2 x 13-1/2	15"	see chart	100	15#	12 x 7			

NON-WOVEN DIE-CUT BAGS



60 gsm recycled polypropylene.
Reusable and recyclable.



15 x 18 + 4

color	die-cut handle
Black	S55118
Red	S55119
White	S55132



NEW! PRICING FOR UNPRINTED BAGS

size	handle	item#	case pack	wt./case	max print	1-9 cases (ea)	10-24 cases (ea)	25+ cases (ea)
15 x 18 + 4	die-cut	see chart	100	8#	8 x 8			

SILK SCREEN LIST PRICE FOR NON-WOVEN BAGS

SILK SCREEN COLORS



The PMS colors on this page are 4-color process simulations.

Note: On custom PMS color matches, the color of the bag may affect the silk screen ink color match. We will make every effort to compensate for that when mixing inks to achieve as close a match as possible to the PMS color requested.

NEW! HOT STAMPING STOCK COLORS FOR NON-WOVEN BAGS



HOT STAMPING LIST PRICE

(for non-woven bags as noted)

- 2-Color/1-Side or 1-Color/2-Sides – Double the Per Bag Price
- 2-Color/2-Sides – Multiply Per Bag Price x 4

ORGANZA BAGS



ZEBRA ORGANZA BAGS

size	item #	#/pack	wt./pack	1-9 packs	10-24 packs	25+ packs
3 x 4	S22095	12	1#			
4 x 6	S22096	12	1#			
5 x 7	S22097	12	1#			
6 x 10	S22098	12	1#			

POLKA DOT ORGANZA BAGS

size	item #	#/pack	wt./pack	1-9 packs	10-24 packs	25+ packs
3 x 4	see chart	12	1#			
4 x 6	see chart	12	1#			

color	3 x 4	4 x 6
Black/White Dot	S22010	S22018
Red/White Dot	S22011	S22019
Pink/White Dot	S22012	S22020
Yellow/White Dot	S22013	S22021
Lt. Blue/White Dot	S22014	S22022
Moss Green/White Dot	S22015	S22023
Copper/White Dot	S22016	S22024
White/White Dot	S22017	S22025



Black/White Dot Red/White Dot Pink/White Dot Yellow/White Dot Lt. Blue/White Dot Moss Green/White Dot Copper/White Dot White/White Dot

ORGANZA BAGS – SOLIDS

size	item#	#/pack	wt./pack	1-9 packs	10-24 packs	25+ packs
3 x 4	see chart	10	1#			
4 x 5	see chart	10	1#			
5 x 6-1/2	see chart	10	1#			
5-1/2 x 9	see chart	10	1#			



color	3 x 4	4 x 5	5 x 6-1/2	5-1/2 x 9
White	S82000	S82012	S82024	S82036
Black	S82001	S82013	S82025	S82037
Red	S82002	S82014	S82026	S82038
Copper	S82003	S82015	S82027	S82039
Pink	S82004	S82016	S82028	S82040
Lavender	S82005	S82017	S82029	S82041
Light Blue	S82006	S82018	S82030	S82042
Silver	S82007	S82019	S82031	S82043
Burgundy	S82008	S82020	S82032	S82044
Olive Green	S82010	S82022	S82034	S82046
Ivory	S82011	S82023	S82035	S82047
Navy	S82088	S82090	S82092	S82094
Fruit Punch	S82089	S82091	S82093	S82095

NATURAL JUTE POUCHES



NATURAL JUTE POUCHES

size	item#	#/pack	wt./pack	1-9 packs	10-24 packs	25+ packs
3 x 5	see chart	12	1#			
5 x 7	see chart	12	1#			
6 x 10	see chart	12	1#			

color	3 x 5	5 x 7	6 x 10
Natural	S22079	S22083	S22087
Moss	S22080	S22084	S22088
Orange	S22081	S22085	S22089
Purple	S22082	S22086	S22090

SUPER WAVE® BAGS



Encore bags are made from 25% post consumer recycled material.



SUPER WAVE® BAGS WITH DIE-CUT HANDLE – CLEAR

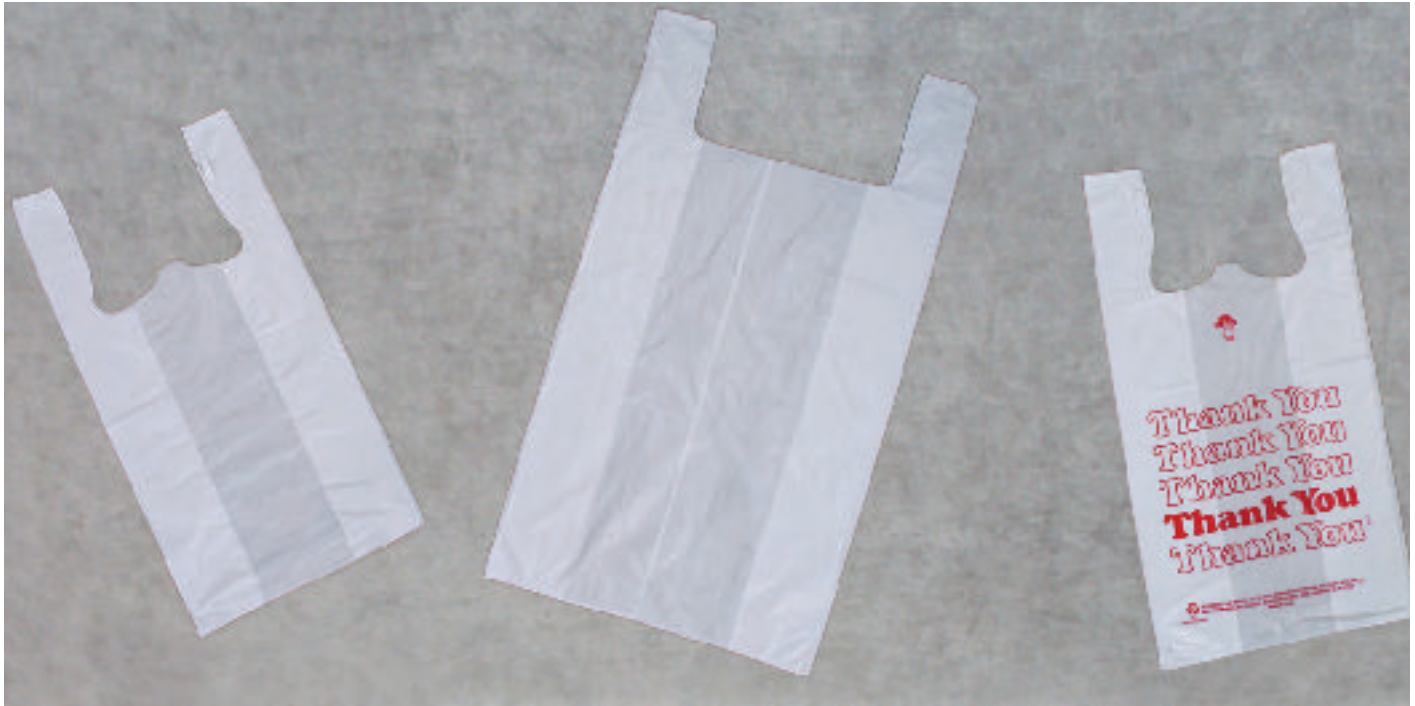
size	item#	case pack	wt./case	gauge	max print	1-9 cases	10-24 cases	25+ cases
12 x 11 x 4	S24232	250	5#	2 mil	8 x 6			
18 x 15 x 6	S27038	250	12#	2.25 mil	11 x 9			
22 x 18 x 8	S24234	250	17#	2.25 mil	12 x 9			

SUPER WAVE® BAGS WITH DIE-CUT HANDLE – COLORS

size	item#	case pack	wt./case	gauge	max print	1-9 cases	10-24 cases	25+ cases
12 x 11 x 4	see chart	250	5#	2 mil	8 x 6			
18 x 15 x 6	see chart	250	12#	2.25 mil	11 x 9			
22 x 18 x 8	see chart	250	17#	2.25 mil	12 x 9			

color	12 x 11 x 4	18 x 15 x 6	22 x 18 x 8
Purple Grape	S24211	S24217	S24223
Citrus Green	S24212	S24218	S24224
Lagoon Blue	S24215	S24221	S24227
Sizzling Pink	S24216	S24222	S24228

T-SHIRT BAGS



HIGH DENSITY T-SHIRT BAGS – WHITE

size	item#	case pack	wt./case	gauge	1-9 cases	10-24 cases	25+ cases
12 x 7 x 22	S50959	1000	13#	0.5 mil			
12 x 7 x 22 Thank You	S50960	1000	13#	0.5 mil			
14 x 10 x 30	S50961	500	16#	0.7 mil			

HIGH DENSITY CLEAR SOFT LOOP BAGS



CLEAR SOFT LOOP HANDLE SHOPPING BAGS (CARDBOARD BOTTOM)

size	item#	case pack	wt./case	gauge	max print	1-9 cases	10-24 cases	25+ cases
5-1/4 x 3-1/4 x 8-1/2 x 3-1/4	S20344	250	9#	3 mil	3 x 5			
8 x 4 x 10 x 4	S20345	250	19#	3 mil	6 x 4			
14 x 10 x 13 x 10	S20348	200	34#	3 mil	9 x 5			
16 x 6 x 12 x 6	S20346	250	32#	3 mil	10 x 6			
16 x 6 x 18 x 6	S20347	200	31#	3 mil	10 x 6			

FROSTED HIGH DENSITY BAGS – CLEAR



SOS STYLE BAGS – CLEAR (DIE-CUT HANDLES W/CARDBOARD BOTTOM)

size	item#	case pack	wt./case	gauge	max stamp	1-9 cases	10-24 cases	25+ cases
7 x 3 x 10 x 3	S20195	500	25#	3.5 mil	5 x 5			
7-3/4 x 3-1/2 x 15 x 3-1/2	S20196	250	18#	4 mil	5 x 6-1/2			
10 x 5 x 13 x 5	S20197	250	24#	4 mil	7 x 7			
16 x 6 x 15 x 6	S20198	250	44#	4 mil	10 x 6			

MERCHANDISE BAGS – CLEAR (DIE-CUT HANDLES)

size	item#	case pack	wt./case	gauge	max stamp	max ink	1-9 cases	10-24 cases	25+ cases
9 x 12	S20192	500	10#	2.5 mil	6 x 6	5 x 5			
12 x 15	S20193	500	16#	2.5 mil	7 x 7	6 x 6			
14 x 3 x 21	S20194	500	32#	2.5 mil	9 x 9	8 x 8			

SHOPPING BAGS – CLEAR (TRI-FOLD HANDLES W/CARDBOARD BOTTOM)

size	item#	case pack	wt./case	gauge	max stamp	1-9 cases	10-24 cases	25+ cases
5 x 3 x 7-1/2 x 3	S20199	250	10#	3.5 mil	3 x 4			
5-1/4 x 3-1/4 x 13 x 3-1/4	S82062	250	12#	3.5 mil	3 x 5			
8 x 4 x 7 x 4	S20200	250	15#	3.5 mil	6 x 4			
8 x 5 x 10 x 5	S20201	250	20#	3.5 mil	6 x 5			
16 x 6 x 12 x 6	S20202	250	37#	3.5 mil	10 x 6			
16 x 6 x 16 x 6	S20203	250	46#	3.5 mil	10 x 6			
17 x 7 x 18 x 7	S20204	200	41#	3.5 mil	10 x 8			

HIGH DENSITY SHOPPING BAGS – COLORS



SHOPPING BAGS – COLORS (TRI-FOLD HANDLES W/CARDBOARD BOTTOM)

size	item#	case pack	wt./case	gauge	max print	1-9 cases	10-24 cases	25+ cases
8 x 5 x 10 x 5	see chart	250	19#	3.5 mil	6 x 5			
16 x 6 x 12 x 6	see chart	250	37#	3.5 mil	10 x 6			

color	8 x 5 x 10 x 5	16 x 6 x 12 x 6
Red	S20205	
Grape	S20206	
Blue	S20211	S20219

SHOPPING BAGS – WHITE OR BLACK (TRI-FOLD HANDLES W/CARDBOARD BOTTOM)

size	white	black	case pack	wt./case	gauge	max print	1-9 cases	10-24 cases	25+ cases
8 x 5 x 10 x 5	S82063	S85061	250	19#	3.5 mil	6 x 5			
16 x 6 x 12 x 6		S85062	250	37#	3.5 mil	10 x 6			

SHOPPING BAGS – GOLD OR SILVER (TRI-FOLD HANDLES W/CARDBOARD BOTTOM)

size	gold	silver	case pack	wt./case	gauge	max print	1-9 cases	10-24 cases	25+ cases
8 x 5 x 10 x 5	S20209	S20212	250	19#	3.5 mil	6 x 5			
16 x 6 x 12 x 6	S20217		250	37#	3.5 mil	10 x 6			

SUPER SATIN® MERCHANDISE BAGS



Encore bags are made from 25% post consumer recycled material.



SUPER SATIN® HIGH DENSITY MERCHANDISE BAGS

size	item#	case pack	wt./case	gauge	1-9 cases	10-24 cases	25+ cases
6-1/2 x 9-1/2	see chart	1000	3#	0.55 mil			
8-1/2 x 11	see chart	1000	5#	0.6 mil			
12 x 15	see chart	1000	8#	0.6 mil			
12 x 3 x 18 die-cut	see chart	500	7#	0.7 mil			
13 x 3 x 21 die-cut	see chart	500	9#	0.7 mil			
16 x 4 x 24 die-cut	see chart	500	13#	0.75 mil			

color	6-1/2 x 9-1/2	8-1/2 x 11	12 x 15	12 x 3 x 18 die-cut	13 x 3 x 21 die-cut	16 x 4 x 24 die-cut
White	S24116	S24127	S24138	S24149	S24160	S24171
Magenta	S24118	S24129	S24140	S24151	S24162	S24173
Dark Blue	S24119	S24130	S24141	S24152	S24163	S24174
Red	S24120	S24131	S24142	S24153	S24164	S24175
Teal	S24122	S24133	S24144	S24155	S24166	S24177
Dark Green	S24125	S24136	S24147	S24158	S24169	S24180

SUPER SATIN® AMERITOTE® BAGS



Encore bags are made from 25% post consumer recycled material.



SUPER SATIN® SOFT LOOP BAGS

size	item#	case pack	wt./case	gauge	max print	1-9 cases	10-24 cases	25+ cases
12 x 4 x 10	see chart	250	7#	2.25 mil	8 x 6			
16 x 6 x 15	see chart	250	12#	2.25 mil	11 x 9			
22 x 8 x 18	see chart	200	18#	2.25 mil	12 x 9			

color	12 x 10 x 4	16 x 15 x 6	22 x 18 x 8
Frosted Clear	S12000	S12007	S12021
Purple Grape	S12001	S12008	S12022
Citrus Green	S12002	S12009	S12023
Hot Pink	S12006	S12013	S12027
Red	S12031	S12033	S12037

SUPER GLOSS® BAGS Made in USA



LOW DENSITY SINGLE LAYER KIDNEY DIE-CUT HANDLE BAGS

size	item#	case pack	wt./case	gauge	1-9 cases	10-24 cases	25+ cases
9 x 12	see chart	1000	9#	1.25 mil			
12 x 15	see chart	1000	15#	1.25 mil			
15 x 18 x 4	see chart	500	14#	1.25 mil			
18 x 18 x 4	see chart	500	17#	1.25 mil			
20 x 20 x 5	see chart	500	19#	1.5 mil			
24 x 24 x 5	see chart	500	27#	1.5 mil			

color	9 x 12	12 x 15	15 x 18 x 4	18 x 18 x 4	20 x 20 x 5	24 x 24 x 5
Dark Green	S24005	S24023	S24041	S24059	S24077	S24095
Red	S24008	S24026	S24044	S24062	S24080	S24098
Teal	S24009	S24027	S24045	S24063	S24081	S24099
White	S24010	S24028	S24046	S24064	S24082	S24100
Yellow	S24011	S24029	S24047		S24083	
Navy Blue	S24013	S24031	S24049		S24085	
Purple	S24014	S24032	S24050		S24086	
Clear	S24016	S24034	S24052		S24088	
Black	S24017	S24035	S24053		S24089	
Dark Blue	S24019	S24037	S24055		S24091	
Citrus Green	S24020	S24038	S24056		S24092	
Hot Pink	S24021	S24039	S24057		S24093	

NEW! PRESENTATION POP-UP GIFT CARD FOLDERS



Made in USA 

Made from 80% recycled post-consumer board and are 100% recyclable.

U.S. Patent Pending



10" STRETCH LOOPS WORK WELL WITH POP-UP GIFT CARD FOLDERS

See p.99 for stretch loops.



Hot Stamping • Custom Printing • Custom Packaging
Mailing Envelopes



Gold
A28067



White
A28068



Silver
A28066



Red
A28065



Black
A28064





Bold Scroll
A28070



Bright Christmas
A28071



Butterfly Reflection
A28072



Pearl Stripe
A28069



Camo
A28073



Christmas Weave
A28074

PRESENTATION POP-UP GIFT CARD FOLDERS

size	item#	case pack	wt./case	1-9 cases	10-24 cases	25+ cases
5 x 3-3/8 x 1/8	see photos	100	3#			



PRESENTATION POP-UP GIFT CARD FOLDER ENVELOPES

type	size	item#	pack	wt./pack	1-9 packs	10-24packs	25+
packs white	5-7/16 x 3-1/2	A28075	100	2#			

PRESENTATION POP-UP GIFT CARD BOXES

IMPRINT ME! Custom minimum – 500.



Standard hot stamping costs do not apply. Call for quote.
*Lime Ice and Pearl Pillows cannot be hot stamped.



Boxes are made from recycled board.
U.S. Patent #8.47



**GIFT CARDS,
BUSINESS CARDS,
SPECIAL PROMOTIONS!**



B28038*
Lime Ice
(white interior)



B28039
Yellow Ice
(white interior)



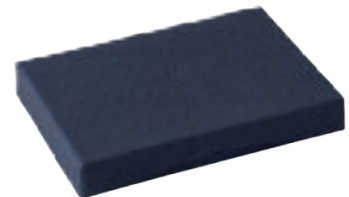
B28040
Purple Ice
(white interior)



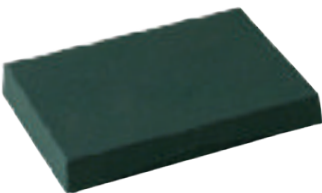
B28041
Pearl Sheen Ice
(white interior)



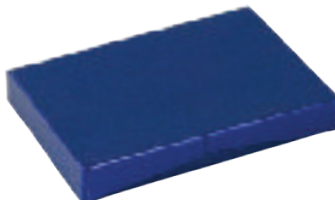
B28042
Black Matte
(white interior)



B28043
Navy Matte
(white interior)



B28044
Forest Green Matte
(white interior)



B28045
Blue Embossed Foil
(white interior)



B28046
Gold Moire Embossed Foil
(white interior)



B28047
Silver Moire Embossed Foil
(white interior)



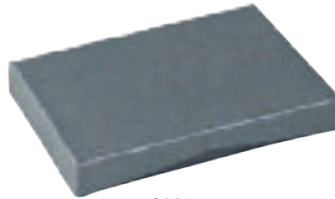
B28048
Red Moire Embossed Foil
(white interior)



B28049
Black Ribbed
(white interior)



B28050
Pink Ribbed
(white interior)



B28051
Slate Ribbed
(white interior)



B28052
Ivory Ribbed
(white interior)



B28053
Red Ribbed
(white interior)



B28054
Gold/Silver Stripe
(white interior)



B28055
Gold Mine
(white interior)



B28056
Leopard Print
(white interior)



B28057
Pearl Lace
(white interior)



B28058*
Pearl Pillows
(white interior)



B28007
Natural Kraft
(white interior)



B28008
Gloss White
(white interior)

PRESENTATION POP-UP GIFT CARD BOXES

IMPRINT ME! Standard hot stamping costs do not apply. Call for quote.



Boxes are made from recycled board.
U.S. Patent #8.47



silver interior



B28036
Silver Cheetah
(silver interior)



B28010
Silver Metallic
(silver interior)



B28019
Pearl Stripe
(silver interior)



B28009
Gloss Black
(silver interior)



B28034
Mock Croc
(silver interior)



B28061
Tuxedo Black Linen
(silver interior)



B28063
Black Tie Pinstripe
(silver interior)



gold interior



B28035
Golden Cheetah
(gold interior)



B28017
Little Trees/Kraft
(gold interior)



B28059
Tuxedo White Linen
(gold interior)



B28025
Leather Jacket
(gold interior)



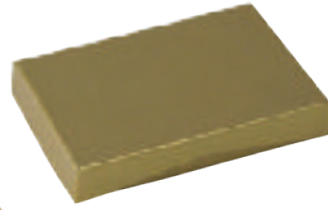
B28011
Gloss Red
(gold interior)



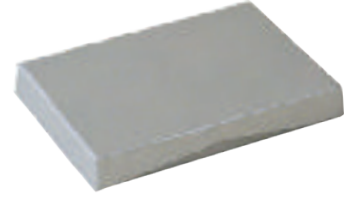
B28026
Gold Metallic
(gold interior)



matte black interior



B28060
Tuxedo Gold Linen
(matte black interior)



B28062
Tuxedo Silver Linen
(matte black interior)

PRESENTATION POP-UP GIFT CARD BOXES

size	item#	case pack	wt./case	1-9 cases	10-24 cases	25+ cases
4-5/8 x 3-3/8 x 5/8	see photos	50	4#			

CUSTOM PRINTED PRESENTATION POP-UP GIFT CARD BOXES



CALL FOR QUOTE

Custom minimum – 500 boxes

This product patented under U.S.Patent #8,47



plastic insert available
as a custom option



**10" STRETCH LOOPS WORK WELL
WITH POP-UPS**

GIFT CARD FOLDERS



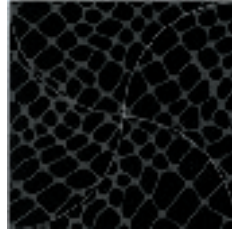
Gift Card Folders are made from 100% recycled board.



A21169
Silver Cheetah
(silver holder)



A21168
Golden Cheetah
(gold holder)



A21151
Mock Croc
(gold holder)



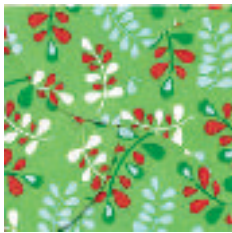
A21152
Candy Confetti
(silver holder)



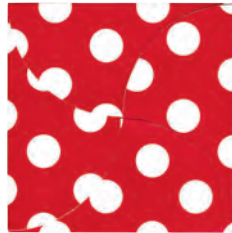
A21153
Quatrefoil
(silver holder)



A21154
Red Croc
(gold holder)



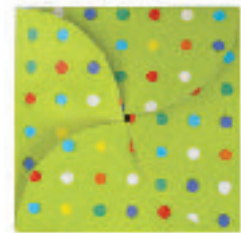
A21155
Christmas Kiss
(silver holder)



A21127
Cheery Dots
(silver holder)



A21131
Domino Dots
(silver holder)



A21080
Party Dots
(silver holder)



A21057
Polka Dot Pearl
(silver holder)



A21062
Zebra Stripes
(silver holder)



A21133
Midnight Black
(gold holder)



A21132
Platinum Silver
(silver holder)



A21054
Shimmer Frost Leaf
(gold holder)



A21055
Shimmer Frost Peacock
(gold holder)



Each folder comes with a die-cut holder, creating a beautiful presentation for your store's gift cards.

6 X 6 GIFT CARD FOLDERS & HOLDERS

item#	case pack	wt./case	max print	1-9 cases	10-24 cases	25+ cases
see photos	100	6#	5 x 5			

PILLOW BOXES

Made in USA 



7 X 3 GIFT CARD PILLOW BOXES

description	item #	case pack	wt./case	max print	1-9 cases	10-24 cases	25+ cases
Red	B25009	50	1#	4 x 1-1/2			
White	B25010	50	1#	4 x 1-1/2			
Black	B25011	50	1#	4 x 1-1/2			
Leaf	B25012	50	1#	4 x 1-1/2			
Hot Pink	B25028	50	1#	4 x 1-1/2			
Blue	B25029	50	1#	4 x 1-1/2			
Silver	B25034	50	1#	4 x 1-1/2			
Gold	B25035	50	1#	4 x 1-1/2			

12-1/4 X 4-5/8 GIFT CERTIFICATE PILLOW BOXES

description	item #	case pack	wt./case	max print	1-9 cases	10-24 cases	25+ cases
Red	B25013	50	2#	8 x 2			
White	B25014	50	2#	8 x 2			
Black	B25015	50	2#	8 x 2			
Leaf	B25016	50	2#	8 x 2			
Hot Pink	B25030	50	2#	8 x 2			
Blue	B25031	50	2#	8 x 2			
Silver	B25036	50	2#	8 x 2			
Gold	B25037	50	2#	8 x 2			

10-3/8 X 6 GIFT PILLOW BOXES

description	item #	case pack	wt./case	max print	1-9 cases	10-24 cases	25+ cases
Red	B25017	50	3#	7 x 3			
White	B25018	50	3#	7 x 3			
Black	B25019	50 3#	7 x 3	\$47.45			
Leaf	B25020	50	3#	7 x 3			
Hot Pink	B25032	50	3#	7 x 3			
Blue	B25033	50	3#	7 x 3			
Silver	B25038	50	3#	7 x 3			
Gold	B25039	50	3#	7 x 3			

BOXES

4" KRAFT GABLE BOXES

Made in USA 



Gable Boxes are made from 100% recycled board.



B20349
Really Red



B20128
White Kraft



B20118
Natural Kraft



NEW B20473
Noir

8" KRAFT GABLE BOXES

Made in USA 



Gable Boxes are made from 100% recycled board.



NEW B20129
White Kraft



NEW B20119
Natural Kraft



NEW B20150
Forest Green



NEW B20159
Really Red



NEW B20474
Noir



B41086
Newsprint



B41083
Zig Zag



B41082
Dots



NEW B20475
Green Garden



NEW B20476
Market Fresh



NEW B20477
Beaujolais



NEW B20140
Fruit Bowl

9" KRAFT GABLE BOXES



Gable Boxes are made from 100% recycled board.



B20151
Forest Green



B20161
Really Red



B20131
White Kraft



B20121
Natural Kraft

4" KRAFT GABLE BOXES

size	item#	name	case pack	wt./case	max print	1-9 cases	10-24 cases	25+ cases
4 x 2-1/2 x 2-1/2	B20349	really red	100	6#	N/A			
4 x 2-1/2 x 2-1/2	B20128	white kraft	100	6#	N/A			
4 x 2-1/2 x 2-1/2	B20118	natural kraft	100	6#	N/A			
4 x 2-1/2 x 2-1/2	B20473	noir	100	6#	N/A			

8" KRAFT GABLE BOXES

size	item #	name	case pack	wt./case	max print	1-9 cases	10-24 cases	25+ cases
8 x 4-7/8 x 5-1/4	B20129	white kraft	100	18#	6 x 3			
8 x 4-7/8 x 5-1/4	B20119	natural kraft	100	18#	6 x 3			
8 x 4-7/8 x 5-1/4	B20150	forest green	100	18#	6 x 3			
8 x 4-7/8 x 5-1/4	B20159	really red	100	18#	6 x 3			
8 x 4-7/8 x 5-1/4	B20474	noir	100	18#	6 x 3			
8 x 4-7/8 x 5-1/4	B41086	newsprint	100	18#	6 x 3			
8 x 4-7/8 x 5-1/4	B41083	zig zag	100	18#	6 x 3			
8 x 4-7/8 x 5-1/4	B41082	dots	100	18#	6 x 3			
8 x 4-7/8 x 5-1/4	B20475	green garden	100	18#	6 x 3			
8 x 4-7/8 x 5-1/4	B20476	market fresh	100	18#	6 x 3			
8 x 4-7/8 x 5-1/4	B20477	beaujolais	100	18#	6 x 3			
8 x 4-7/8 x 5-1/4	B20140	fruit bowl	100	18#	6 x 3			

9" KRAFT GABLE BOXES

size	item#	name	case pack	wt./case	max print	1-9 cases	10-24 cases	25+ cases
9 x 6 x 6	B20151	forest green	100	27#	7 x 4			
9 x 6 x 6	B20161	really red	100	27#	7 x 4			
9 x 6 x 6	B20131	white kraft	100	27#	7 x 4			
9 x 6 x 6	B20121	natural kraft	100	27#	7 x 4			

GABLE BOXES



Gable Boxes are made from 100% recycled board.



Build your brand with customized packaging!



4" GABLE BOXES



B41080
Red Chevron



B41078
Basket Weave



B41072
Golden Cheetah



B41074
Silver Cheetah



B41076
Santa Stripe



B41064
Quatrefoil



B41066
Christmas Kiss



B41062
Mock Croc



B41058
Kensington Plaid/Kraft



B41042
Cheery Dots



B41054
Midnight Black



B41055
Domino Dots



B41011
Polka Dot Pearl



B41010
Zebra Stripes



B41053
Platinum Silver



B41012
Shimmer Frost
Leaf



B41013
Shimmer
Frost Peacock

8" GABLE BOXES



B41081
Red Chevron



B41079
Basket Weave



B41073
Golden Cheetah



B41075
Silver Cheetah



B41077
Santa Stripe



B41067
Mock Croc



B41071
Christmas Kiss



B41069
Quatrefoil



B10697
Polka Dot Pearl



B41038
Cheery Dots



B41031
Snowbirds/Kraft



B41050
Domino Dots



B41027
Leaves & Berries/Kraft



B41007
Zebra Stripes



B41048
Platinum Silver



B41008
Shimmer Frost Leaf



B41009
Shimmer Frost Peacock

GABLE BOXES

size	item#	case pack	wt./case	max print	1-9 cases	10-24 cases	25+
cases 4 x 2-1/2 x 2-1/2	see photos	100	6#	N/A			
8 x 4-7/8 x 5-1/4	see photos	100	18#	6 x 3			

JEWELRY BOXES



Made from 100% recycled board.



● Boxes are made with rigid white lined board and filled with non-tarnishing jeweler's cotton.



Black Gloss



Black Kraft Groove



Cocoa Embossed



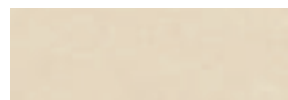
Deep Purple



Silver Linen Foil



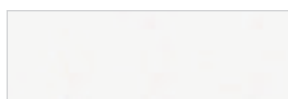
Gold Linen Foil



Brown Kraft



Oatmeal Groove



White Krome



White Swirl Embossed

TUCK-IT® ONE-PIECE FOLDING GIFT BOXES



White and tinted gloss are made with heavy 100% recycled white board; grey interior. Natural, groove and tinted kraft are made with recyclable kraft board.



TINTED GLOSS BLACK (BL), SILVER (SI), HOLIDAY RED (HR)

size	bl item#	si item#	hr item#	case pack	wt./case	max print	1-9 cases	10-24 cases	25+ cases
4 x 4 x 2	B30475	B30476	B30467	100	7#	3 x 3			
4 x 4 x 4	B30465	B30466	B30459	100	10#	3 x 3			
6 x 4-1/2 x 4-1/2	B30389	B30391	B30384	100	15#	5 x 3			
6 x 6 x 4	B30457	B30458	B30447	100	17#	5 x 5			
6 x 6 x 6	B30445	B30446	B30439	100	21#	5 x 5			
8 x 8 x 3-1/2	B30417	B30418	B30412	100	26#	6 x 6			
9 x 4-1/2 x 4-1/2	B30437	B30438	B30432	100	18#	6-1/2 x 3			
10 x 10 x 6	B30409	B30411	B30399	50	23#	8 x 8			
12 x 6 x 6	B30397	B30398	B30392	50	17#	10 x 5			

TINTED KRAFT – COCOA GROOVE

size	item#	case pack	wt./case	max print	1-9 cases	10-24 cases	25+ cases
4 x 4 x 2	B30511	100	7#	3 x 3			
4 x 4 x 4	B30512	100	10#	3 x 3			
6 x 4-1/2 x 4-1/2	B30513	100	15#	5 x 3			
6 x 6 x 4	B30514	100	17#	5 x 5			
6 x 6 x 6	B30515	100	21#	5 x 5			
8 x 8 x 3-1/2	B30516	100	26#	6 x 6			
9 x 4-1/2 x 4-1/2	B30517	100	18#	6-1/2 x 3			
10 x 10 x 6	B30518	50	23#	8 x 8			
12 x 6 x 6	B30519	50	17#	10 x 5			
12 x 12 x 2-1/2*	B30521	50	22#	10 x 10			

*Two piece pop-up

TWO-PIECE POP-UP APPAREL BOXES



IMPRINT ME!



White and tinted gloss are made with heavy 100% recycled white board; grey interior. Recycled kraft groove and tinted kraft are made with recyclable kraft board.



- Folding apparel boxes have matching bases and lids. Boxes fold flat for easy storage; assemble in seconds.

TINTED GLOSS – BLACK (BL), SILVER (SI)

size	bl item#	si item#	case pack	wt./case	max print	1-9 cases	10-24 cases	25+ cases
11-1/2 x 8-1/2 x 1-5/8	B30373	B30374	100	21#	7 x 4			
15 x 9-1/2 x 2	B30346	B30347	100	31#	8 x 4			
17 x 11 x 2-1/2	B30366	B30367	50	23#	10 x 5			
19 x 12 x 3	B30353	B30354	50	29#	11 x 7			

TINTED KRAFT – BLACK GROOVE

size	item#	case pack	wt./case	max print	1-9 cases	10-24 cases	25+ cases
11-1/2 x 8-1/2 x 1-5/8	B30249	100	21#	7 x 4			
15 x 9-1/2 x 2	B30250	100	31#	8 x 4			
17 x 11 x 2-1/2	B30251	50	23#	10 x 5			
19 x 12 x 3	B30252	50	29#	11 x 7			

WHITE FROST (GLOSS)

size	item#	case pack	wt./case	max print	1-9 cases	10-24 cases	25+ cases
10 x 7 x 1-1/4	B30068	100	15#	5 x 3-1/2			
11-1/2 x 5-1/2 x 1-1/2	B30069	100	15#	7 x 3			
11-1/2 x 8-1/2 x 1-5/8	B30070	100	21#	7 x 4			
15 x 9-1/2 x 2	B30071	100	31#	8 x 4			
17 x 11 x 2-1/2	B30072	50	23#	10 x 5			
19 x 12 x 3	B30073	50	29#	11 x 7			
24 x 14 x 4	B30074	25	23#	12 x 8			

RECYCLED NATURAL KRAFT GROOVE

size	item#	case pack	wt./case	max print	1-9 cases	10-24 cases	25+ cases
10 x 7 x 1-1/4	B30676	100	12#	5 x 3-1/2			
11-1/2 x 5-1/2 x 1-1/2	B30677	100	11#	7 x 3			
11-1/2 x 8-1/2 x 1-5/8	B30678	100	16#	7 x 4			
15 x 9-1/2 x 2	B30679	100	23#	8 x 4			
17 x 11 x 2-1/2	B30681	50	18#	10 x 5			
19 x 12 x 3	B30682	50	22#	11 x 7			
24 x 14 x 4	B30683	25	17#	12 x 8			

TIN TIE BAGS Made in USA  **IMPRINT ME!** *May be hot stamped (all) and ink printed (natural kraft only).*



WHITE AND NATURAL KRAFT

size	item#	bag	color	case pack	max print	wt./case	1-9 cases	10-24 cases	25+ cases
3-3/8 x 2-1/2 x 7-3/4	S77244	1/2 lb.	White	100	2-1/2 x 5	3#			
3-3/8 x 2-1/2 x 7-3/4	S77245	1/2 lb.	Natural Kraft	100	2-1/2 x 5	3#			
3-3/8 x 2-1/2 x 7-3/4	S77246	1/2 lb.	White with Window	100	2-1/2 x 1-3/4	3#			
3-3/8 x 2-1/2 x 7-3/4	S77247	1/2 lb.	Natural Kraft with Window	100	2-1/2 x 1-3/4	3#			
4-1/4 x 2-1/2 x 9-3/4	S77248	1 lb.	White	100	3-1/4 x 6	4#			
4-1/4 x 2-1/2 x 9-3/4	S77249	1 lb.	Natural Kraft	100	3-1/4 x 6	4#			
4-1/4 x 2-1/2 x 9-3/4	S77250	1 lb.	White with Window	100	3-1/4 x 2-1/4	4#			
4-1/4 x 2-1/2 x 9-3/4	S77251	1 lb.	Natural Kraft with Window	100	3-1/4 x 2-1/4	4#			
6 x 2-3/4 x 9-1/2	S77252	Cookie	White with Window	100	4-3/4 x 1-1/2	5#			

SILK SCREEN



SILK SCREEN COLORS

White	Cream PMS 1205C	Lemon Yellow PMS 107C	Golden Yellow PMS 136C	Orange PMS 021C
Texas Orange PMS 174C	Red PMS 185C	Dark Red PMS 201C	Maroon PMS 209C	Brandywine PMS 233C
Violet PMS 2587C	Purple PMS 268C	Ultra Blue PMS 2726C	Light Blue PMS 299C	Columbia Blue PMS 659C
Island Blue PMS 285C	Reflex Blue	Navy Blue PMS 281C	Teal PMS 7466C	Kelly Green PMS 347C
Dark Green PMS 342C	Lime Green PMS 360C	Brown PMS 490C	Grey PMS 430C	Black
Copper PMS 876C	Gold Shimmer	Metallic Silver	Metallic Blue	Metallic Green
Metallic Purple	Metallic Ruby			

The PMS colors on this page are 4-color process simulations.

Note: On custom PMS color matches, the color of the bag may affect the silk screen ink color match. We will make every effort to compensate for that when mixing inks to achieve as close a match as possible to the PMS color requested.

SILK SCREEN LIST PRICE FOR PAPER SHOPPING BAGS AND EUROTOTES

INK PRINTING STOCK COLORS

					
Navy Blue PMS 281C	Royal Blue PMS 293C	Lake Blue PMS 286C	Reflex Blue	Azul PMS 285C	Process Blue
					
Aquamarine PMS 3115C	Peacock PMS 3145C	Teal PMS 322C	Bright Teal PMS 327C	Forest Green PMS 560C	Shamrock Green PMS 342C
					
Kelly Green PMS 347C	Greensboro Green PMS 354C	Leaf PMS 384C	Acid Green PMS 382C	Bamboo PMS 379C	Yellow PMS 108C
					
Warm Burgundy PMS 209C	Ruby PMS 222C	Brick Red PMS 1805C	Lipstick Red PMS 199C	Bright Red PMS 185C	Rhodamine Red
					
Hot Pink PMS 219C	Orange PMS 021C	Pantone Purple	Royal Purple PMS 526C	Pantone Violet	Milk Chocolate PMS 174C
					
Bruno PMS 477C	Dark Chocolate PMS 490C	Smoke Grey PMS 431C	Copper PMS 876C	Gold PMS 872C	Silver PMS 877C
	<p>The colors on this page are 4-color process simulations of designated Pantone® colors. Actual colors may vary. Please keep in mind the background color of the ink printed item may alter the appearance of the ink, especially light colors printed on dark backgrounds.</p>				
Black					

TRY OUR TWO-COLOR INK PRINTING PROGRAM!

2-Color/1-Side **SAME PRICE** As 1-Color/1-Side (2-Color Requires 2 Plates)