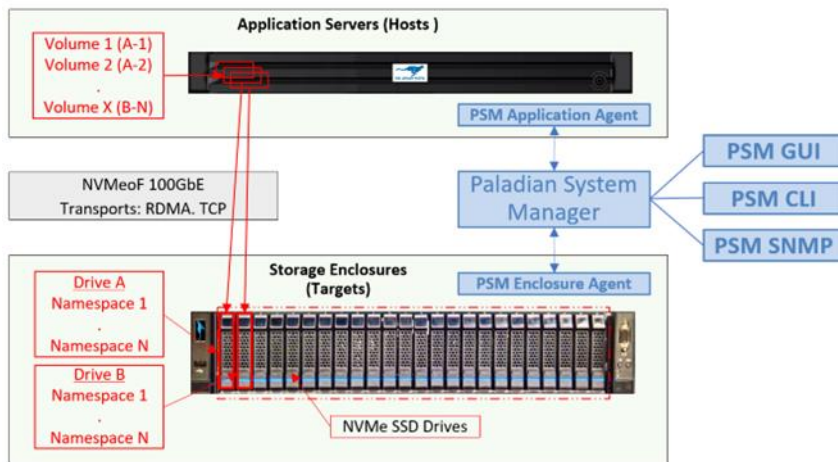


## Overview

Paladian’s Composable NVMeoF Storage Manager (PSM) provides administrators with the software tools needed to create and manage NVMeoF hyperconverged storage environments built up from commercial servers and NVMe SSDs - that can be scaled to petabytes.

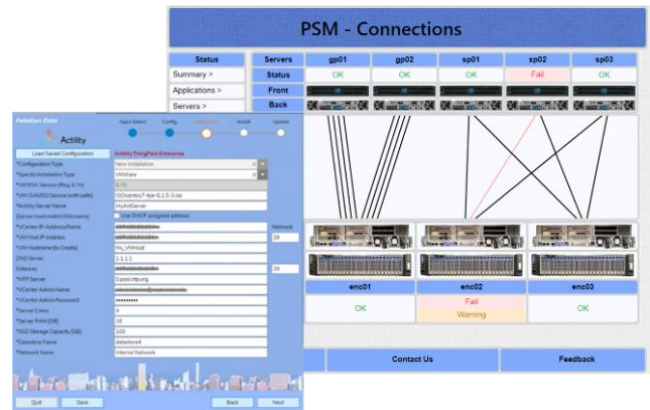
### Paladian Storage Manager Architecture



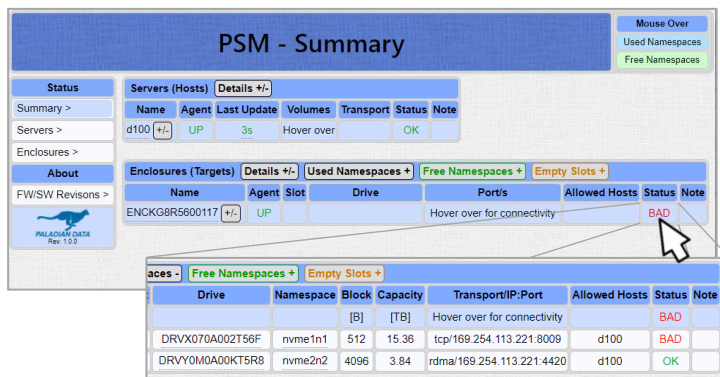
The management console, CLI or GUI, can be run from anywhere with network access to the PSM storage manager. Control mechanisms are in place to allow access by authorized personnel.

HTTPS/TLS and data encryption are integral to the environment.

Using a GUI interface customers can stand up and edit an enterprise class HCI NVMe storage environment in minutes, with industry leading performance, without the massive costs normally expected from high-end storage vendors.



## Key Features

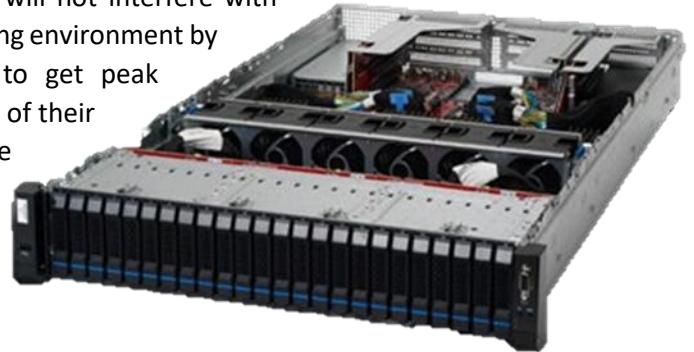


- **VIEW STORAGE RESOURCES**, from a single pane of glass. PSM eliminates the need to use a separate console for each application server and storage unit to manage the system.
- **ASSIGN AND CONFIGURE STORAGE**, to all application servers, using the storage manager CLI or GUI. Storage for all application servers can be managed from a single console. PSM tracks which storage resources have been allocated and which have not.

- **SHOW THE HEALTH FOR APPLICATION SERVERS**, overall health indication for the entire system and for each component of the system, alerting administrators of adverse trends or system issues. As the need for additional storage, or the movement of SSDs between servers arises it can be managed through the GUI
- **AIDS IN TRIAGING HEALTH PROBLEMS IN THE SYSTEM**, detailed health information is kept for each component in the system which can be used to identify the failing component.

## Conclusion

PSM works on any NVMeoF storage platform. Our software will not interfere with your performance but can enhance performance in your existing environment by identifying bottle necks and giving you recommendations to get peak performance from your storage. Administrators may make use of their preferred infrastructure vendors as needed. PSM will make recommendations on drive slot locations in storage enclosures to maximize system performance



PSM supports Windows™ or Linux operating systems while running NVMeoF TCP or RDMA transport protocols. As storage grows PSM can support rolling over storage to lower cost cloud storage for backup or disaster recovery with the purchase of the Hybrid Storage option. Paladian also offers automatic connection failover for customers interested in the most robust environments. Software agents are added to all application servers, and servers acting as storage shelves. A Storage Manager (SM) is then installed on a Windows or Linux system as directed. Once the components are installed, SSDs may be connected or removed to the attending application servers as needed. This assignment may be done at the SSD namespace level to provide the best economics.



<https://paladiandata.com>

1024 Iron Point Rd,  
Folsom, California, 95630 United States

Contact us through our website

<https://paladiandata.com/contact-us>

+1 (800) 822-1495

OR DIRECT

Mike Thompson [miket@paladiandata.com](mailto:miket@paladiandata.com)