



Issue 21



14/18k gold filled, non-tarnishing,  
jewelry with genuine pearls. Assorted  
designs to mix & match - and stack!



- 21GBA Anklet Size 9 Asstd \$34
- 21GBB Bracelet Size 7 Asstd \$24.50
- 21GBE Earrings Asstd \$19.50
- 21GBR Rings Sz 6-7 & 8-9 Asstd \$9.25
- 21GBT Toe Ring Asstd \$6.50

With gold filled hamsa or mother-of-pearl cross  
21GBAX Anklet \$36 21GBBX Bracelet \$26.50



MT21GBEX Earrings \$21.50



Choice of Judaica  
MT21GBAX Anklet \$36  
MT21GBBX Bracelet \$26.50



4EC Metal. Gold, copper & silver.



5J G



3



Charm Bracelet 22BC \$5.50  
Charm Choker 22CC \$6.25



Bar Bracelet 22BT \$5.50



Bar Choker 22CT \$6.25

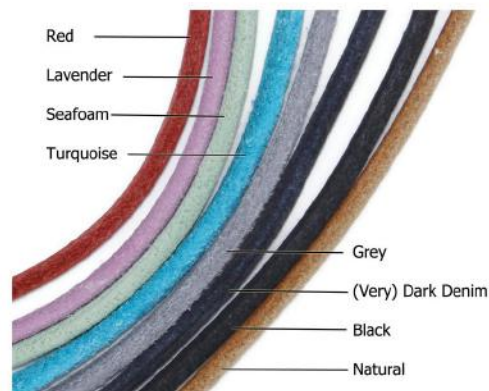


Charm & Bar Wrap  
22WT \$8.50

NEW Layering Looks!  
Petite layering jewelry  
crafted from 3mm suede  
and stainless steel. Adorable  
tiny charms just for this  
collection! Sturdy magnet  
clasp too.



Charm Wrap 22WC \$8



Butterfly



Heart



Star



Squirrel



Kitty



Smiley



Cross



Star of David



Clover

# Wear Everywhere Bracelets



Select a cotton pattern and we will add coordinating cork and suede.  
Wear one with our best-selling stone bracelet for a winning stack!



1PL	Large 18"	\$11
1PLB	Beaded, Large 18"	\$13
1PM	Medium 16"	\$10
1PMB	Beaded, Medium 16"	\$12
1PS	Small 15"	\$10
1PSB	Beaded, Small 15"	\$12

All natural stone, wood and coconut bracelets on stretch polymer cord. Each dozen includes 12 different stone or 6 different wood designs.

	Stone	Wood	Dozen
Anklets	8A	8B	\$75
Mens 8"	8M	8N	\$66
Womens 7"	8W	8X	\$60





Our classic beaded leather designs, in choice of leather color and charms.

(above right) 2FA 18" Necklace \$14.50

(above) 2FB Necklace with choice of charm \$16

(right) 1B Bracelet \$14

(below) 2C Charm Bracelet \$10



4CC Earrings \$6



(left) 4CB Beaded leather 18-19.5" necklace in choice of leather color. With magnet clasp. \$27

(right) 4CA Coordinating bracelet \$17



## So Very: A Mood-Style Collection in 5 Colorways

Cali - Dreamin' in soft, comfy colors. (natural, lilac, oasis, gold, pearl)

Gaia - Mother (Earth) knows best. (natural, antique brown, natural green/blue/red-brown)

Salty - Dive in, the water's fine. (pearl, sky blue, oasis, teal, royal)

Bright - Never a dull moment! (red, yellow, sky blue, pearl, mint)

Luxe - She's never fully dressed without metallics. (metallic red/olive/silver/bronze/berry)



16AB Bracelet (Cali) \$14  
16AN Necklace (Cali) \$19



16BB Bracelet (Cali) \$6.50  
16BN Necklace (Luxe) \$9



16CB Bracelet (Cali) \$11  
16CN Necklace (Salty) \$14



16DB Bracelet (Bright) \$10  
16DN Necklace (Cali) \$20



16E Necklace (Gaia) \$11

(indicates colorway shown)

### Summer Fun Pendants

A delightful pairing of resin and walnut wood in shaped pendants

Curved Bead Necklace on Natural Leather  
16" Adjustable. Set of 5. \$47.50 (9.50 ea)

- 11KBO Multicolor Kite
- 11KBR Assorted Colors Drop
- 11KBS Teal Only Drop
- 11KBT Assorted Color Square

Charm Necklace on Natural Leather  
16" Adjustable. Set of 5. \$35 (\$7 ea)

- 11EQ Multicolor Kite
- 11ER Assorted Colors Drop
- 11ES Teal Only Drop
- 11ET Assorted Color Square



Earrings on stainless steel  
Set of 5. \$42.50 (\$8.50 ea)

- 5NQ Multicolor Kite
- 5NR Assorted Colors Drop
- 5NS Teal Only Drop
- 5NT Assorted Color Square



Custom beach sand jewelry filled with sand from your location.  
Carded with beach name.  
Lobster clasp & 2" extender chain.

9M Bracelet with glass capsule and choice of leather color. \$13

9N Same style as a choker \$14



Super popular glass beaded jewelry features electroplated seed and rondelle beads that shine bright.



Violet



Turquoise



SkyBlue



Pink



Green



Cyan



Blue

Adult Ring \$5  
Size 5-6 20RA5  
Size 7-8 20RA7  
Size 9-10 20RA9



20BL \$6.50  
Large 7.5"  
Bracelet



20BM \$6  
Medium 6"  
Bracelet

20AN9 \$7.50  
9" Anklet



20AN10 \$8  
10" Anklet



20TRS \$3  
Small/Toe Ring

20BS \$5.50  
Small 5"  
Bracelet



Glass and metal beads  
on stretch polymer cord.



Freshwater white and black pearls on super-long black leather in 3 fun designs.

(above left) 10A 52" black & white pearl deconstructed tassel wrap necklace.. \$28

(above right) 10B 52" black & white pearl knotted wrap necklace. \$29

(right) 10C Deconstructed white pearl tassel, 26" necklace with lobster clasp and 2" extender chain. \$24



Always on trend pearl lariat with baroque pearls.  
On 16" black (of course) leather above the knotted  
strands. Lobster clasp and extender. 10E \$10

Coordinating Earrings 5C \$9



5A \$8



5B \$9

Freshwater pearls tassel necklace. Choose 15" or 24" (shown) in  
choice of leather.

11N Black/Peacock \$32      11O White \$21

11Q Almost 500 silver tone round beads  
strung on 7 strands of leather  
in choice of color. Hangs  
24-25.5" with lobster clasp  
and 2" extender. \$46





11KA \$7.50 (each)



11KB



1C



4AA

4AEB



4AC



1T



11KA Choker is 16" with lobster clasp, & extender chain. \$7.50

11KB. With a charm \$9

4AA Bracelet with magnet clasp. \$10

4AC Earrings \$6

4AEB. Bracelet (4AEA Anklet) with choice of charm \$7.50

4ADB or 4ADA - Bracelet or anklet with no charm. \$6

1C Bracelet with floating beads, magnet clasp. \$8

1T Interfaith/Tolerance Bracelet \$12

11L Necklace 16-19.5" with magnet clasp. \$24.50



11L



Boho tassel necklace and earrings in choice of leather and tassel colors.

2FC Necklace \$16

5S Earrings \$9



1R Ten-strand leather stack bracelet with choice of any 3 charms. Magnet clasp. \$21 (also available without charms)

Leather & cork bracelets with choice of slider bead. Finished with brushed stainless magnet clasp. Request a size.

1N \$12

1NX Without a Bead \$10



11A Convertible triple wrap bracelet or necklace in any leather color and charm. \$23



5N Charm Earrings \$7.50



17BB Bracelet \$7.50  
17BN Necklace \$10

Blue  
Glass beaded memory wire  
cuff bracelet and choker  
necklace in blues &  
transparent.



17BBS Bracelet with  
agate \$7.50  
17BNS Neckalce with  
agate \$10



17BBA Bracelet with  
abalone \$7.50  
17BNA Necklace with  
abalone \$10



17PB Bracelet \$7.50  
17PN Necklace \$10

Mystical  
Peacock & silver  
electroplated glass  
beads.



17PBA Bracelet abalone \$7.50  
17PNA Necklace with abalone \$10



17MB Bracelet \$7.50  
17MN Necklace \$10

Metal  
Gold, copper & silver  
electroplated glass  
beads.



17MBA Bracelet with abalone \$7.50  
17MNA Necklace with abalone \$10

(right) Pearlfection Collection includes bracelet, necklace and earrings in a combination of silver plated beads and genuine freshwater pearls.

4BA Bracelet \$18      4BC 18"+ Necklace \$30  
4BC Earrings \$8



(left) Tribal Sea Collection features handmade recycled glass, freshwater pearls, and plated beads in choice of leather and glass color.

4DA Bracelet \$17      4DB 18"+ necklace \$28  
5K Earrings \$9



1S Triple-wrap bracelet converts to a 20" necklace. On stretch polymer cord with freshwater pearls and faceted glass. Select dark blue, light blue, peacock, black, green, gold, copper or transparent glass beads. 1S \$17



11GA \$6

1H Bracelet with six freshwater pearls on choice of leather color with magnet clasp \$13



Baroque and black/peacock pearls on leather with lobster clasp and 2" extender chain.

1L Bracelet \$12  
10L 16" Necklace \$12



Petite freshwater pearls on choice of leather color with magnet clasp.

1M Bracelet \$14  
10M 16" Necklace \$17





11GA Pearl Necklace \$6  
(not shown) 11JA Black Pearl \$8.50



11I Black/Peacock pearls necklace with magnet clasp. 16-19.5" \$29



11H White pearls necklace  
with magnet clasp \$19



11GB Bracelet or Anklet \$5.50  
(not shown) 11JB Black Pearl \$8



5M earrings \$10



1F Black/Peacock and white pearls bracelet  
with magnet clasp, choice of leather \$18



1G Black/Peacock Pearls leather  
bracelet, magnet clasp \$25



(left) 12A  
Portuguese cork bracelet in choice  
of cork and slider bead. Magnet clasp.  
\$5.50

(above) 12B  
Cork with sewn accents in choice  
of brown, denim or black. \$6

12C Double cork bracelet  
with magnetic clasp. \$8



12G Double round cork bracelet  
in choice of color and sliders \$8



12H Cork charm bracelet with  
magnet clasp \$7.50

Durable, sustainably harvested, Portuguese cork jewelry featuring chunky Bali-style metal and acrylic "pearl" beads.



15AB\$7

15AN \$8



15ABX \$7

(not shown) 15ANX necklace \$8



15BB \$8

15BN \$9



15BBX \$8

(not shown) 15BNX necklace \$9



15CB \$7.50

(not shown) 15CN necklace \$8.50



15DB \$7.25

(not shown) 15DN necklace \$8.25

15F Triple cork bracelet with foldover clasp \$10





7A Starfish \$8  
7B Floating Heart \$8



7C Owl \$8  
7D Daisy \$8



7E Infinity \$8  
7F Peace \$8



7G Dolphin \$8  
7H Knot \$8



7I Elephant \$8  
7J Dragonfly \$8



7K Sea Turtle \$8  
7L Purple Mermaid \$8



7M Blue Mermaid \$8  
7N Sea Star \$8  
7P Kisses \$8



Assorted colors  
100% woven  
cotton, magnetic clasp.

Best Seller!



Best-selling cotton jewelry with stainless steel magnetic clasp. \$5

6A Womens 7"

6B Mens 8"

6C Teen 6.5"

6D Anklet 9"

6E 16" Choker (not pictured) \$5.50

6F Hammered curved tube beaded cotton bracelet in Womens size 7" \$7.50



70 Affirmation  
Select message. \$8



6G Charm Bracelet \$9

14ACP 15" stretch choker with hand-glazed Peruvian ceramic raku fired pendants. On white and frost blue glass strung on stretchy polymer cord.  
\$20 Choose Tree of Life, Wave, Maori Hook



Fair-trade assorted tagua and white fused glass.  
5X Earrings \$8  
11XA 16" Stretch necklace \$20



(above) 11F Necklace on choice of 16" leather color, with assorted glass. 2" extender. \$8

(right) 50 Earrings with cowrie shell & Krobo glass beads. In choice of glass color. \$7



11W Tagua collar necklace on 18" black leather with silver tone beads. In assorted colors. \$11.50

5W Coordinating earrings \$5



11X Layered tagua pendant in assorted colors on 18" black leather. \$6



11Y Tagua charm pendant necklace in assorted colors and choice of charm. \$6.25



1Z Ombre tagua stretch bracelets. Display pack of 6 as shown. \$57

Stacked stone & crystal earrings in a single color or chakra/rainbow.

3F earrings \$7

3FA Charm earrings \$10



# LIMITED RELEASE! Wire Wrapped Cultured Sea Glass Sets



Metal Bead Set \$24 **NOW \$18**  
(Left) F22ATUR Turquoise  
(Right) F22ASEA Sea Foam



Petite Pearl Set \$26 **NOW \$19.50**  
(Left) F22BSEA Sea Foam  
(Right) F22BPAC Pacific



Rice Pearl Set \$26 **NOW \$19.50**  
(Left) F22CPAC Pacific  
(Right) F22CSEA Sea Foam



Earrings (assorted based  
on availability)  
F22EAR \$9.50 **NOW \$7.15**

Upcycled fused glass beaded necklaces  
in choice of glass and leather colors.

16" with lobster clasp and  
2" extender chain.

11DA Knotted \$5

11DB Metal Beads \$5.50

11DC Pearls \$7.75

11DD Glass \$8



11M Glass Tassel Neckace. Shown at 15" or  
select 24" in your choice of leather and  
glass colors. Lobster clasp & extender chain. \$14

5I Coordinating glass earrings \$7



11B Fused glass necklace  
on choice of leather and  
glass colors. Stainless  
steel magnetic clasp,  
Hangs 16"-19.5". \$14



Fused glass beaded jewelry created on stretchy polymer elastic cord. In choice of glass colors.

All Glass  
Anklet 14AA \$12  
Bracelet 14AB \$9.50  
14AC Choker \$18

Baroque Pearl  
14BA Anklet \$13.50  
14BB Bracelet \$11  
14BC Choker \$18.50



Triple Pearl  
14CA Anklet \$14  
14CB Bracelet \$10.50  
14CC Choker \$19.50



11DD \$8

Handmade glass beads on stretch polymer cord Select Tree, Wave or Hook  
14DA Bracelet without raku pendant \$12      14DB Bracelet with raku pendant \$14



Fused glass earrings with choice of charm

(Left) 5HA \$9  
(Center) 5P \$10  
(Right) 5H \$7



Mixed media leather jewelry finished with an antique silver heart clasp. Beaded with a delightful combination of freshwater pearls, Bali-style beads and handmade fused glass in assorted colors. A lustrous baroque pearl hangs from the clasp.

(above) 18A Bracelet \$16

(right) 18B Charm Bracelet  
Choose our My Tribe Jewish charm assortment or select any four charms from our collection.  
\$24



(below) 18C Necklace  
20" leather asymmetrically beaded and knotted.  
\$39





Super-long necklaces on antique matte brown/black leather (or select any of our colors). Adjustable slide-knot closure to hang a maximum of 40". Select glass color(s).



13I \$8    13J \$10    13K \$9    13L \$7





13E \$34  
Inlaid brass star  
(ask about  
available colors)



13C \$24  
Baroque Pearls



13D \$29.50



13F \$11.50  
Adjusts  
26-44"

Ask about  
available  
colors

11R Freshwater pearl bib necklace with 2" extender.  
\$70

5A Pearl earrings \$8



Pearl bracelets with magnet close, choice of leather color.

(left) 1I \$20

(middle) 1J with glass bead \$20

(right) 1K with black pearl \$22



11P Freshwater coin pearl collar necklace on leather, silver tone beads, lobster clasp, 2" extender. \$30

5D Coin pearl earrings. \$9





DISP-A \$744  
Glass Charm Jewelry

- 6 dz 4E bracelets  
(page 5)
- 1 dz 5N charm earrings  
(page 21)
- 1 dz 5J glass earrings  
(page 5)

Choose Coastal or  
Mystical colorway



DISP-B \$720  
Cotton Jewelry

### Counter Displays \*16"x8"

- \*Whitewashed wood
- \*Rotating, 3-sided
- \*18 movable hooks
- \*Includes shipping



DISP-C \$780  
Cotton & Glass Jewelry

- 5 dz 6A 7" cotton bracelets  
(page 11)
- 5 dz 4E faceted glass bracelets  
(page 5)



DISP-D \$726  
Cowrie & Glass Charm Jewelry

- 3 dz 4E faceted glass bracelets  
(page 5)
- 1 dz 5J faceted glass earrings  
(page 5)
- 2 dz 5Q cowrie & glass earrings  
(page 19)
- 2 dz 11F cowrie & glass necklace  
(page 19)



Faceted glass stretch bracelet with silver plated beads.  
Choose Star, Hamsa or Charm.

MT4EB Blue and/or White Glass \$7.25

MT4EM Metallics Glass \$7.25



Memory wire jewelry beaded with silver,  
gold, and copper faceted glass, silver  
plated beads and synthetic tubing.

MT17MBS Star Bracelet \$7.50

MT17MNS Star Necklace \$10

MT17MBH Hamsa Bracelet \$7.50

MT17MNH Hamsa Necklace \$10



Memory wire jewelry beaded with blue  
and white faceted glass, silver plated  
beads and synthetic tubing.

MT17BBS Star Bracelet \$7.50

MT17BNS Star Necklace \$10

MT17BBH Hamsa Bracelet \$7.50

MT17BNH Hamsa Necklace \$10





Woven cotton bracelets with stainless steel magnetic clasp.  
Select size, color and bead.

(above) MT6A Swarovski Star of David bead \$11

(above right) MT6B Stainless Steel Carved Star of David Barrel \$11

(right) MT6C Hollow Star of David bead \$11



MT12F Portuguese cork with choice of  
bead and color. Stainless steel magnet clasp.  
\$11

Hamsa

Hollow  
Star

Swarovski  
Star

Slim Barrel

Carved Barrel



CHECK OUT THE NEW SUEDE  
COLLECTION ON PAGE

MT6B

MT6A

MT6C



Our most popular cotton styles are  
also available in Lucky Red paracord.  
Very durable and wear resistant!



MT11C



MT11D



MT11E



MT11B

Fair-traded brass pendants handcrafted by home-based artisans in Nepal. Inlaid with genuine and synthetic stones. On 16" leather with lobster clasp and 2" extender chain. Ask for available colors.

MT11B Fused glass \$21

MT11C Glass, Ethiopian brass beads, elephant clasp. \$21

MT11D \$19

MT11E Ethiopian brass beads, elephant clasp \$19.50

MT2FC Best selling leather necklace with Nepal star. \$22



MT2FC



Lava beads strung on stretch polymer cord \$6.50

8" mens size.

MT8MH - Hamsa

MT8MS - Star of David

7" womens size

MT8WH - Hamsa

MT8WS - Star of David



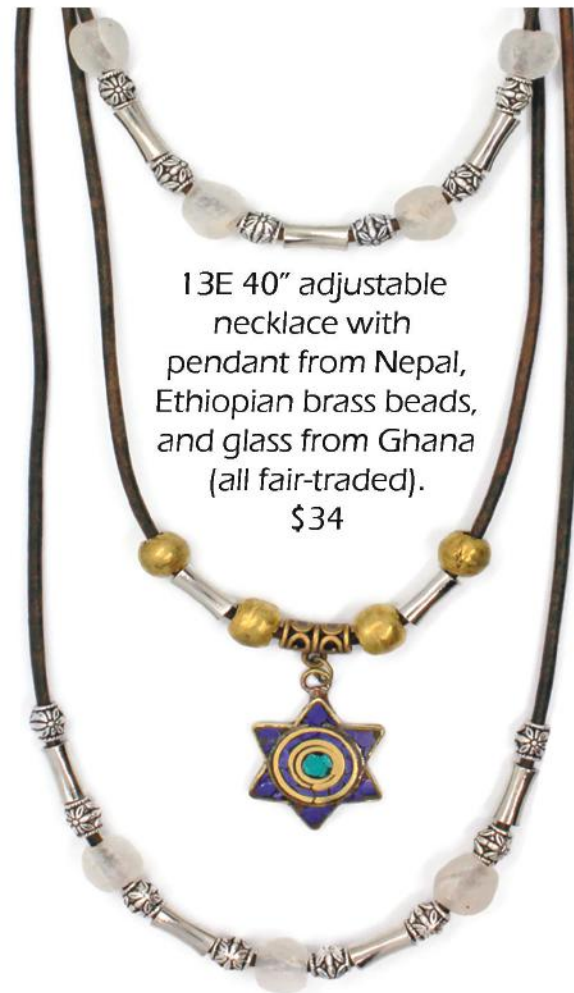
11Y Tagua pendants in assorted colors with charm of choice. On 16" leather with 2" extender chain. \$6.25



(left) 2FB Best selling 18" beaded leather necklace with choice of charm and leather color. \$16



(right) Curved tube bead bracelet and necklace with choice of charm and leather color.  
4AEB Bracelet \$7.50    11KB Necklace \$9



13E 40" adjustable necklace with pendant from Nepal, Ethiopian brass beads, and glass from Ghana (all fair-traded).  
\$34

11E 16" leather necklace with charm. \$6.50



5M Freshwater pearl charm earrings. \$10



5N Charm earrings, no pearls \$7.50

Leather & cork bracelets with brushed stainless magnet clasp. Request mens or womens size.



MT1NS Star of David \$14

MT1NC Carved Stainless Barrel Star \$15

12A Portuguese cork with your choice of slider bead or charm \$5.50

12B Choose one of our sewn cork styles (denim and brown stripe shown) \$6



Chunky beaded cork with silver plated star, beads, and acrylic pearls.

(left) MT15AB Bracelet \$10  
MT15AN 18" Necklace \$11

(below) MT15CB Bracelet \$10.50  
(not shown) MT15CN Necklace \$11.50



Hamsa



Carved



MT12G Portuguese cork beaded bracelet in choice of colors and bead. Finished with an antique silver alloy fold-over clasp. \$13



Slim Barrel



Hollow



Swarovski

MT1B Our best selling leather bracelet!  
 Choose a Star with two deep blue  
 Swarovski crystals or select the Hollow Star.  
 With magnetic clasp in choice of leather  
 color. \$17.50



MT1E Leather bracelet with freshwater pearls.  
 Select Star bead and leather color.  
 Magnetic clasp. \$21

MT4DA Beaded leather bracelet with  
 Swarovski or Hollow star bead and freshwater  
 pearls. In choice of leather color, magnetic  
 clasp. \$18



MT4CA Choose star bead and leather color \$18





MT6GDR

MT5NDR



MT5NMH



MT11SDRX



MT11SDR

MT1SDR



MT11DDDR



MT11DDDRX



Dreidel

Menorah

Woven cotton bracelet in choice of color \$11

MT6GDR

MT6GMH

Earrings \$9

MT5NDR

MT5NMH

16" beaded leather necklace with one charm. \$12

MT11SDRX

MT11MHX

Coordinating bracelet with one charm (not shown). \$13

MT1SDRX

MT1SMHX

16" beaded leather necklace with 3 charms \$16

MT11SDR

MT11SMH

Beaded leather bracelet with 3 charms. \$17

MT1SDR

MT1SMH

16" leather necklace, blue & white fused glass beads. \$11

MT11DDDR

MT11DDMH

16" leather necklace, blue fused glass beads. \$10

MT11DDDRX

MT11DDMHX

MT4EBDR



MT4AEDR



MT11EMH



MT12GMH



MT11KBDR



MT12GDR



MT12iDR



MT6FDR

Dreidel

Menorah

MT11EDR

MT11EMH

MT4AEDR

MT4AEMH

MT11KBDR

MT11KBMH

MT4EBDR

MT4EBMH

MT12GDR

MT12GMH

MT12iDR

MT12iMH

MT6FDR

MT6FMH

16" Leather charm necklace, choice of color \$8.50

Beaded leather charm bracelet with 2" extender. \$8.50

16" Leather necklace with silver tone bead. \$10

Glass beaded bracelet on stretch polymer cord. \$9.25

Round cork bracelet with magnetic clasp. \$8.50

Flat cork bracelet with alloy magnetic clasp. \$6.50

Cotton keychain, choice of color \$8

# Charms



MTN



PIN



TOL



SPR



WNG



TUR



SFH



MER



ANC



SDR



WHA



OTT



DRG



MSE



ELE



BER



HOR



PAW



LUK



HRT



HAM



CRS



ANK



RIB



LLS



CHT



SLS



SUN



OMM



PCE



BUD



HHD



CPR



BOK



CLF



NOT



DLS



SHS



TOR



CHA



RDR



HUM



WND



WCH



POT



HTE



HAT



PEN



CRE

# Leather Colors

 <p>RED (RED)</p>	 <p>METALLIC RED (MRD)</p>	 <p>NATURAL RED (NRD)</p>	 <p>MARIGOLD ORANGE (MAR)</p>	 <p>METALLIC GOLD (GLD)</p>	 <p>YELLOW (YEL)</p>
 <p>MINT GREEN (MNT)</p>	 <p>NATURAL TURQUOISE (TUR)</p>	 <p>NATURAL GREEN (NGR)</p>	 <p>METALLIC OLIVE (OLV)</p>	 <p>METALLIC OASIS (OAS)</p>	 <p>SKY BLUE (SKB)</p>
 <p>METALLIC TEAL (TEL)</p>	 <p>NATURAL BLUE (NBL)</p>	 <p>ROYAL BLUE (ROY)</p>	 <p>LILAC (LIL)</p>	 <p>LIGHT VIOLET (LVT)</p>	 <p>DARK VIOLET (DVT)</p>
 <p>METALLIC BERRY (BER)</p>	 <p>NATURAL (NAT)</p>	 <p>NATURAL RED-BROWN (NRB)</p>	 <p>METALLIC BRONZE (BNZ)</p>	 <p>CHOCOLATE BROWN (CHO)</p>	 <p>METALLIC PEARL (PRL)</p>
 <p>METALLIC SILVER (SIL)</p>	 <p>BLACK (BLK)</p>				

# Cotton Cord Colors



RAINBOW (RBW)



TUTTI FRUTTI (TUT)



RED/ORANGE (ROR)



PINK (PNK)



MARINE (MAR)



TURQUOISE (TUR)



CERULEAN (CER)



ROYAL (ROY)



NAVY/RED (NYR)



NAUTICAL (NAU)



GREEN (GRN)



BROWN/BLUE (BBL)



YELLOW (YLW)



PASTEL (PTL)



BEIGE (BGE)



SIENNA (SIE)



PURPLE (PPL)



PINK/PURPLE (PKP)



PURPLE STRIPES (PST)



COOL HUES (COO)



BLACK & BRITES (BRI)



MULTI (MLT)



CRIMSON (CMN)



BLACK & WHITE (BLK)

# Flat Cork Sliders



Flower

Tile

Circle Tree

Heart

Celtic



Medallion

Skull

Tree

Hamsa

Buddha



Believe

"Turquoise"

Turtle

Scallop

Wheel



Starfish

Cowrie

Wave

Murex

Anchor



Horse

Peace

Note



Starfish

Heart

Owl

Daisy

Infinity



Peace

Dolphin

Knot

Elephant

Dragonfly



Turtle

Purple Mermaid

Blue Mermaid

Sea Star

Hope



Believe

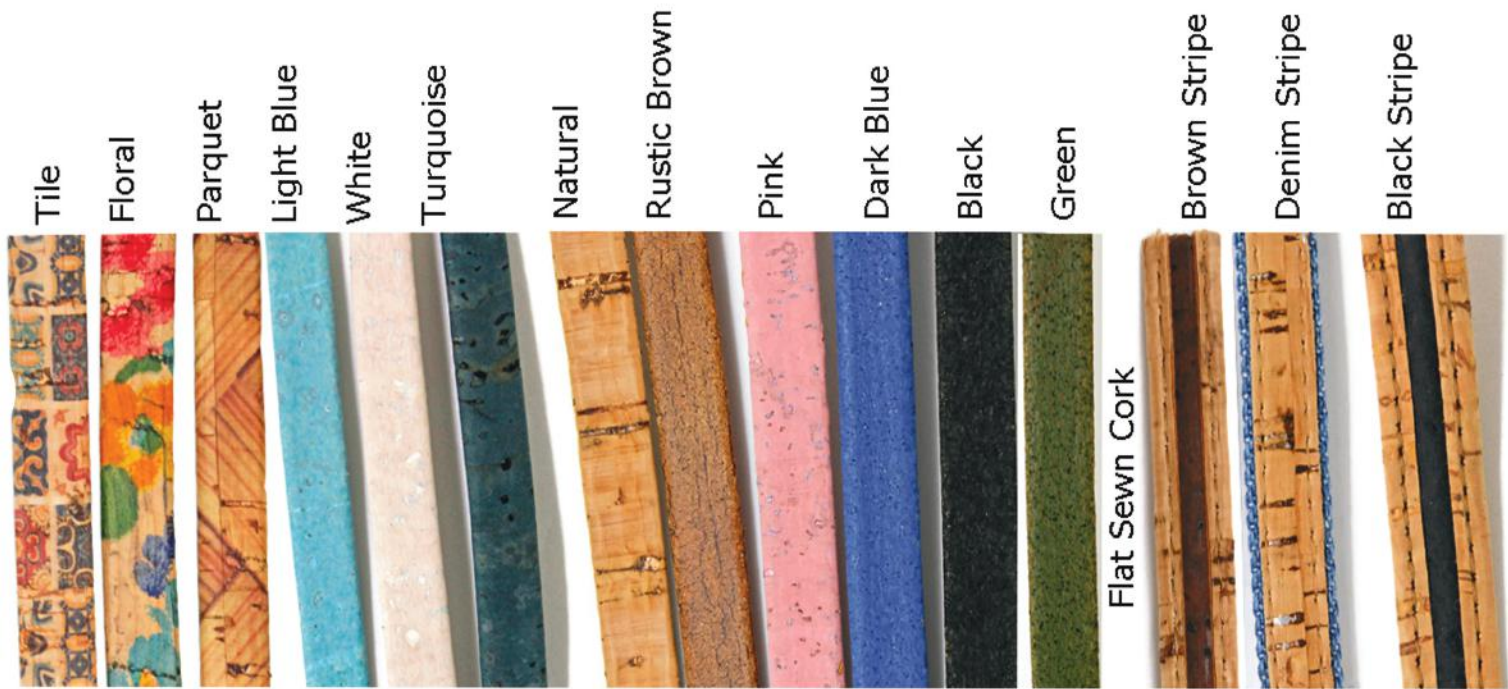
Dream

Love

Kisses

Sliders for Cork Bracelet 12G and Leather/Cork/Suede Bracelet 1N

## Flat Cork Colors



## Round Cork Colors

