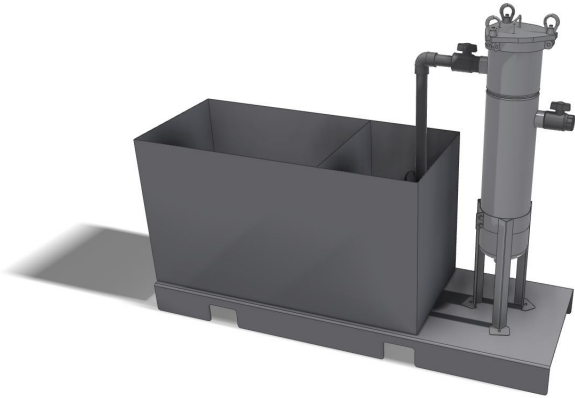


# Hybrid Overflow to Drain

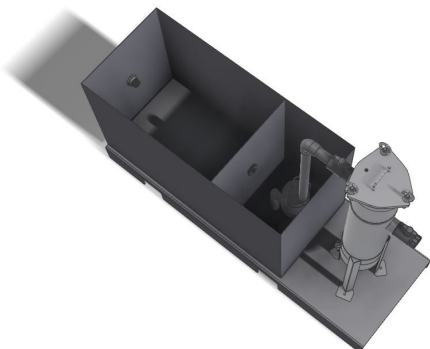


## Hybrid Overflow Physical Size

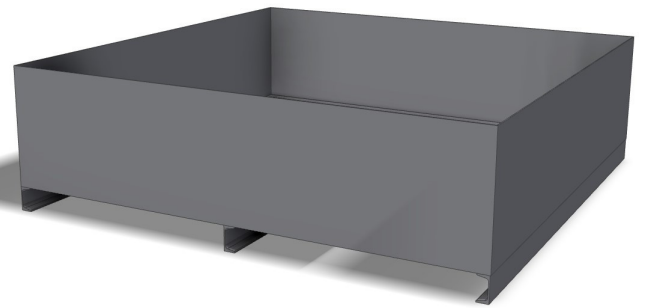
Length - 78" (2000mm)  
Width - 26" (660mm)  
Height - 72" (1828mm)  
Approximate Weight - 550 lbs (250Kg)

## Features

- Works in conjunction with the Catch Tank to remove solids and sediments before pumping to drain.
- #2 Stainless Steel Bag Filter Housing
- Powder Coated Steel Construction
- Stainless Steel Float Activated Submersible Pump
- Visual & Audible High Water Alarm Failsafe
- Primary Tank accepts disposal baffled bag to settle out large solids before final filtration.
- 56 gallon intermediate clean tank upstream of final filtration
- Forkable base is pallet jack compatible



# Catch Tank



## Features

- Pumps water to drain or to Hybrid Overflow to Drain for further settling and filtration before drain
- Stainless Steel Float Activated Submersible Pump
- Powder Coated Steel Construction
- Forkable base is pallet jack compatible

## Catch Tank Physical Size

Length - 60" (1525mm)  
Width - 60" (1525mm)  
Height - 15" (381mm)  
Approximate Weight - 200 lbs (440Kg)