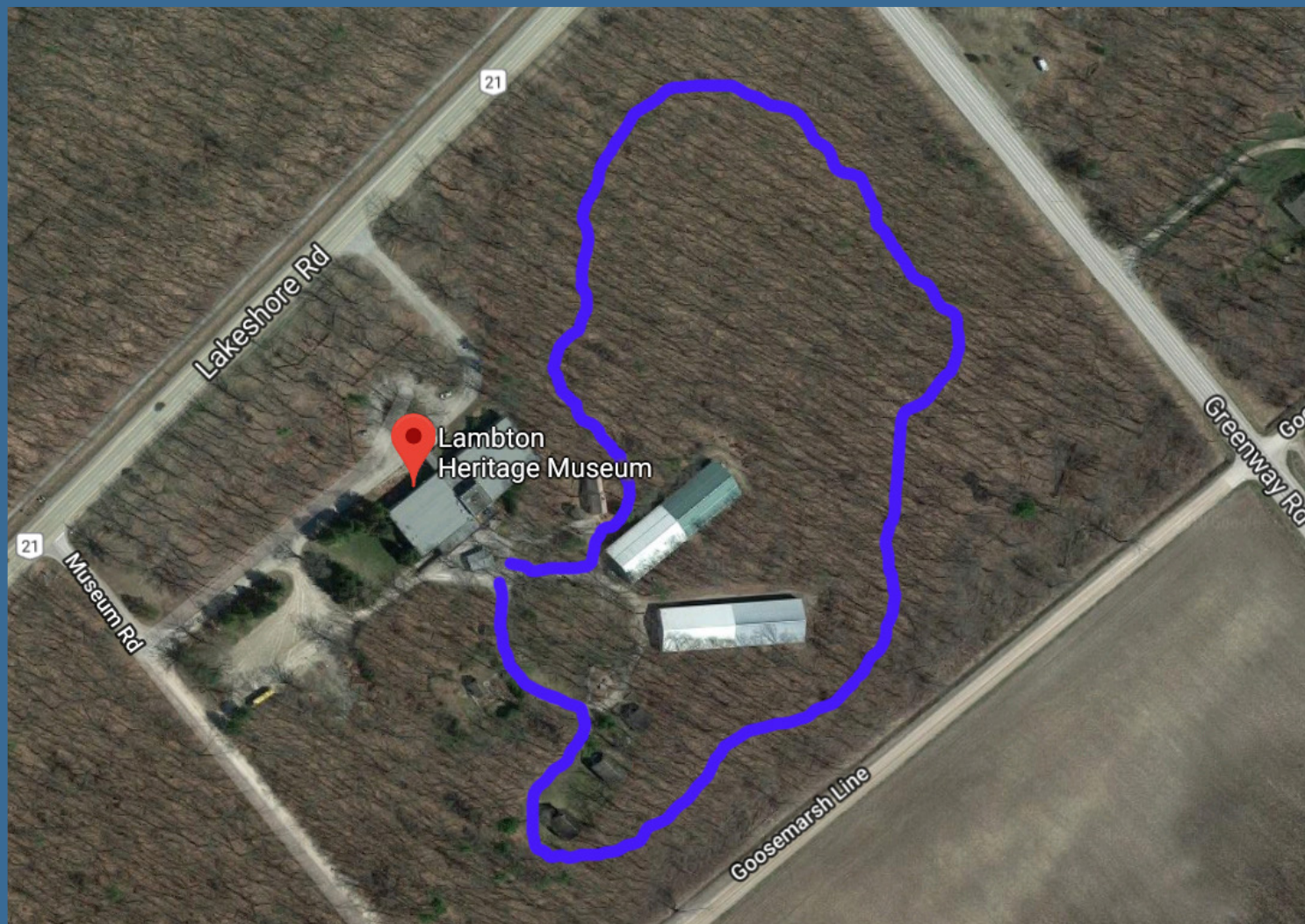




## WOODLAND HERITAGE TRAIL

LAMBTON HERITAGE MUSEUM  
10035 Museum Road, Grand Bend, ON

### APPROXIMATE TRAIL ROUTE / LOCATION



### TRAIL FEATURES:

A short 1km hike (approx. 20 mins) through a serene pine and oak forest

Accessible year-round as a hiking and snowshoe experience

Participate in a Photo Scavenger Hunt challenge as you hike the trail

Discover six Point of Interest panels along the trail that describe the natural environment and the activities of Indigenous peoples in the area

### POINTS OF INTEREST:

- Welcome to The Oak Savannah
- Three White Pines
- The Disappearance of Lake Smith
- Mystery of the Tool Cache
- Look to the Sky
- The Attawandaron People