



ENERGY
TECHNOLOGIES
— Power & Water Solutions —



 **quaFlow**
Technologies



Patented Water Efficiency & Sustainability for Commercial Markets

Introducing The AquaFlow

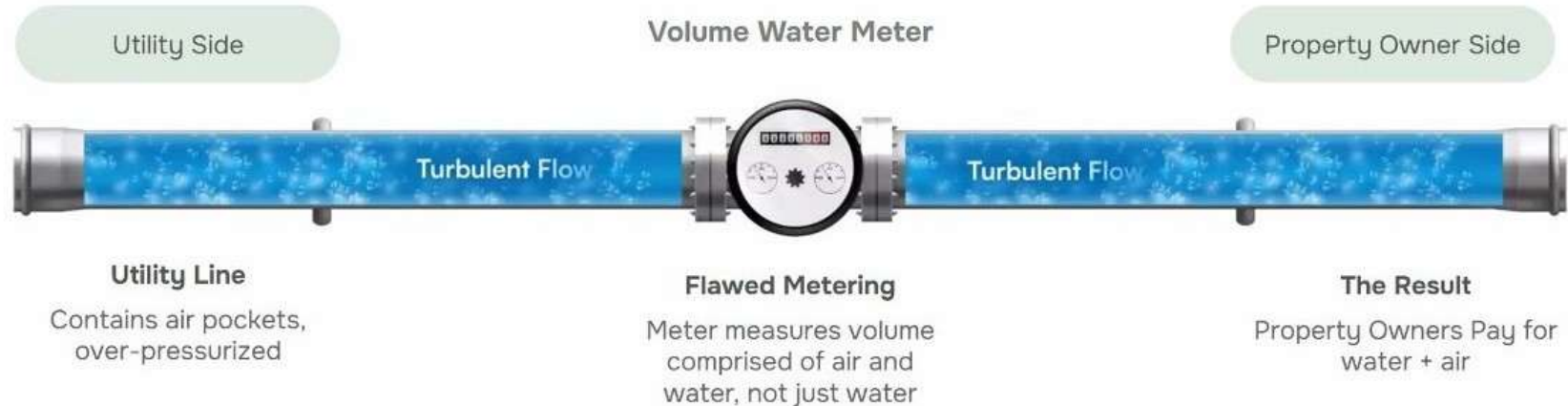


The Problem The AquaFlow Addresses

Municipal Water District Infrastructures Are Inefficient

Property Owners Are Overpaying For Water AND Air

Before the AquaFlow Valve Installed



- Typically, the way the utility companies measure usage is insufficient. Most water meters measure volume only and not flow. Volume is made up of both water plus air.
- The water supply from the utility company is often over-pressurized, resulting in time-based usage, e.g. sprinklers use more water than needed.



The AquaFlow Valve Solution

How The AquaFlow Water Management System Works

After the AquaFlow Valve Installed

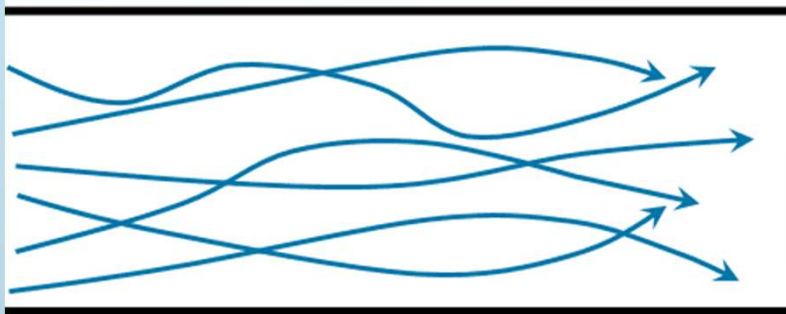


- AquaFlow Valve's technology compresses the accumulated air in the water line, creating a 200 foot compression zone and reducing the volume of air prior to flowing through the water meter. The result is between 15% and 30% savings on water and sewer costs.
- To maximize savings, the AquaFlow technology can reduce the water pressure coming from the utility, which reduces water usage by 6%, depending on the incoming pressure from the utility.
- AquaFlow Valve's technology controls the flow of water by adjusting the pressure to provide sufficient and comfortable water pressure to satisfy the consumer experience all the while reducing the overall water volume usage as needed.



Laminar Flow

Laminar flow is a fluid dynamics phenomenon where liquid moves in smooth, parallel layers with minimal mixing, creating a "frozen" or solid-like appearance, occurring at low velocities where viscous forces dominate over inertial forces, often visualized with water from a tap before it breaks or in smoke rising steadily from a candle, contrasting with chaotic turbulent flow



AquaFlow Water Efficiency Technologies



High Quality Medical Grade
Stainless 316L Steel



Stops Water Hammering &
Stabilizes Water Pressure



Improved Meter Accuracy,
Saving You Money &
Water (Variable Flow Rates
Available)



Calibrated To Your
Environmental Needs



Fully Certified & Insured
(IAPMO/ NSF/ ANSI / CAN 61)



AquaFlow

Our Valve Technology



It's a device that goes inside your existing waterline (after the meter) that can save you up to 30% on your monthly water bill.

The AquaFlow Valve simplifies the path to immediate savings through a straightforward and uncomplicated installation process.



How Our Patented Valve Technology Saves on Water Usage

Saving on Water Usage

The reduction in actual water usage (a component of the overall savings achieved) results from decreasing the volume of water passing through the AquaFlow Water Efficiency Valve at the point of installation, while simultaneously stabilizing the flow of water throughout the property. The AquaFlow Valve is installed in the main water line and does not noticeably affect the end user in the way an energy saving shower head may, while still achieving the desired result of a net decrease in water usage.

In addition to the compression-based savings, the AquaFlow Valve system, on average, reduces water usage by 6% each month.

Stabilizing Water Flow

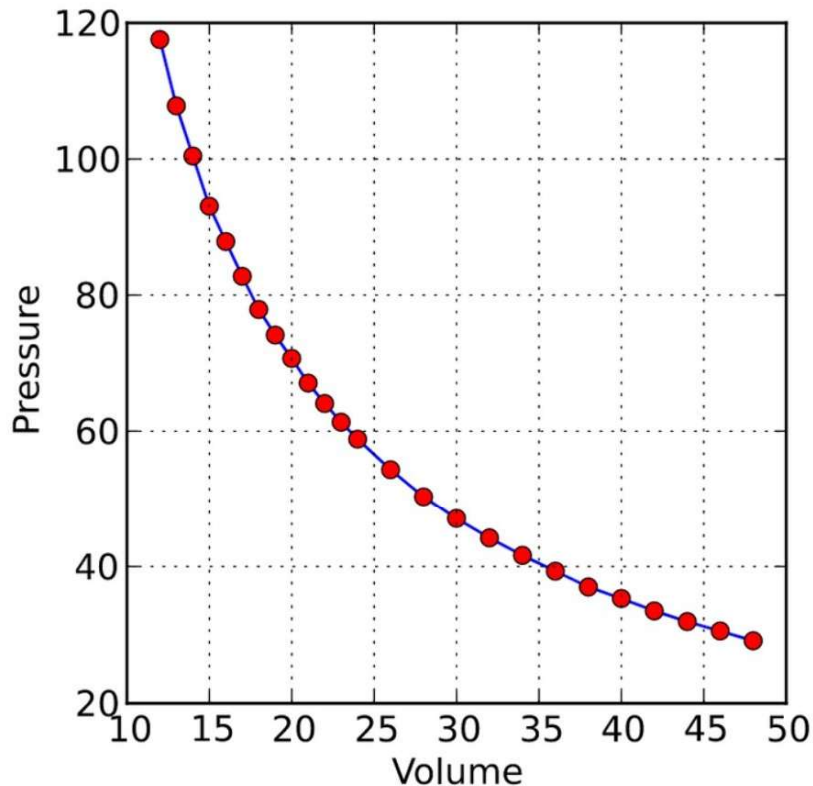
Additionally, by stabilizing water flow and reducing turbulence, there is a corresponding reduction in overall system pressure, which helps to reduce wear and tear on pipes and infrastructure equipment through which water passes, extending the useful life of such equipment.

The historical, as well as present water bills (pre- and post-installation) capture the decrease in water usage (resulting from both our compression and water-saving technology) and can be used as validating evidence in the application for, and procurement of, "Green Loans" and similar government-supported programs.



The AquaFlow Valve Solution

The Science



As pressure goes up, volume drops.

Boyle's Law $P_1V_1 = P_2V_2$

- As water pressure increases, volume goes down. Boyle's Law explains the relationship between gas and pressure and can be used to determine an increase/decrease in gas volume as pressure is changed.
- Today's water infrastructures are outdated. As cities grow, the water municipalities increase the pressure in order to reach customers furthest out. As water flows through pipes turbulence and friction cause air in the water.
- Modern water meters measure only volume, which includes both air and water flowing through the meter, so customers pay partially for air.
- Simply, when a gas is pressurized it takes up less space. Therefore, increasing the pressure in your water line reduces the air volume passing through the meter.

AquaFlow

Our Valve Technology

We have improved our proprietary AquaFlow Valve Water Efficiency to lower utility bills between 15 and 30%

High Quality

High Quality Medical Grade
Stainless Steel (Series 316L)

Manufacturing

Made in USA

Installation Location

After the meter, on the property owner's side

Simple Installation

One hour typical installation time



Certification

NSF/ANSI/CAN61,
IAPMO Standard IGG 338

Valve Sizes

Available in all sizes up to 16"
and metric sizes

Warranty

Lifetime

3 in 1 Water Efficiency Valve

Compressible Flow Valve: Compresses the accumulated air in the water line, reducing the volume of air prior to flowing through the water meter. The result is up to 30% savings on water consumption costs.

Adjustable Pressure-Regulating Valve: Regulates water pressure to reduce water usage by 6%, depending on incoming pressure from the water utility. Creates a smooth, laminar flow to insure more accurate meter readings, save water, increase the service life of plumbing system components, and reduces risks of water leaks.

Check Valve: The double-coil spring mechanism uses a consistent spring-force design that responds rapidly to flow variation.



8-Inch Installation. 22% Monthly Savings. Real Efficiency in Action. 💧

Another major success story for AquaFlow Technologies! Our team just completed an 8-inch commercial installation, and the customer is already seeing a 22% reduction in monthly water and sewer bills. That's not a projection — it's verified savings. When you're managing high-volume water systems, even small inefficiencies in flow and metering can cost thousands every single month. The AquaFlow Valve changes that — delivering precision-engineered performance that optimizes flow, stabilizes pressure, and eliminates trapped air before it reaches the meter. Each valve is crafted from 316L Medical-Grade Stainless Steel, built to perform for decades with zero maintenance, and designed to enhance accuracy, lower costs, and promote sustainable water management for commercial, industrial, and municipal systems. With installations in over 45 countries,



AquaFlow is redefining how the world measures, manages, and values water — one valve at a time. ⚙️

Key Highlights:

- ✓ Up to 30% savings on metered water & sewer costs
- ✓ Built for large-scale commercial & industrial systems
- ✓ Installed in under 32 minutes — zero maintenance
- ✓ Certified by NSF, ANSI, KIWA, and IAPMO
- ✓ Backed by a Lifetime Warranty & 6-Month Money-Back Guarantee
- ✓ Proudly Made in the USA

From car washes and resorts to manufacturing plants, universities, and city utilities, AquaFlow is helping customers achieve measurable ROI, reduce waste, and meet sustainability goals — proving that smart water management isn't just good for the planet, it's good for business.

💧 Reliable performance. Proven savings. Sustainable future.

That's the AquaFlow Advantage.

Vertical Markets

AquaFlow Valve provides intelligent water solutions to diverse vertical markets such as hotels, apartments, grocery stores, schools and universities, factories, etc.



Hotels & Resorts



Multi-Family Properties



Condominiums



Commercial Buildings



Restaurants



Grocery Stores



Car Washes



Shopping Malls



Government Buildings



Health Clubs & Gyms



Schools & Universities



Hospitals & Clinics



Golf Courses



Amusement & Water Park



Assisted Living



Industrial/Manufacturing



Energy Producers



Warehouses/Data Centers



Correctional Facilities



Bottling Facilities



Auto Dealerships

Installations

AquaFlow Valve's typical water shut-off time during installation is less than 60 minutes. Thousands successfully-completed installations worldwide.



Some of Our Satisfied Worldwide Customers





The world is experiencing unprecedented water demands. As a corporate citizen, you have the unique opportunity to save money, save on water usage and benefit from doing good while also doing well.

6 MONTHS MONEY BACK GUARANTEE



If the AquaFlow valve does not meet customer expectations, 100%.of the cost of the valve will be refunded

*** Removal cost done by licensed plumber is not included

Thank You!



Call To See If You Qualify
714-760-5112

