

DELAWARE STATE HEALTH ASSESSMENT (SHA) AND
STATE HEALTH IMPROVEMENT PLAN (SHIP)

Partnership Coalition

June 1, 2023

***Delaware*SHIP**

Charting a course to improve health

Agenda

Welcome and Objectives

Yendelela Cuffee, PhD, MPH

State Health Assessment

Themes and Key Findings, Q&A

*Leanne Fawkes, DrPH, MPH,
Braulio Florentino Benitez, MPH,
Danielle Whyte, BA,
Alexander Burris, MPH,
Christiana Oyekanmi, MPH*

Communications Period

*Kate DuPont Phillips,
MPH, Executive Director, Healthy
Communities Delaware*

Engagement

Yendelela Cuffee, PhD, MPH

Wrap Up and Next Steps

Yendelela Cuffee, PhD, MPH

Adjourn



Delaware SHA/SHIP Coalition

Mission & Vision



To improve health outcomes, well-being, and health equity across Delaware's communities and population.



All people in Delaware enjoy healthy lives and healthy communities.

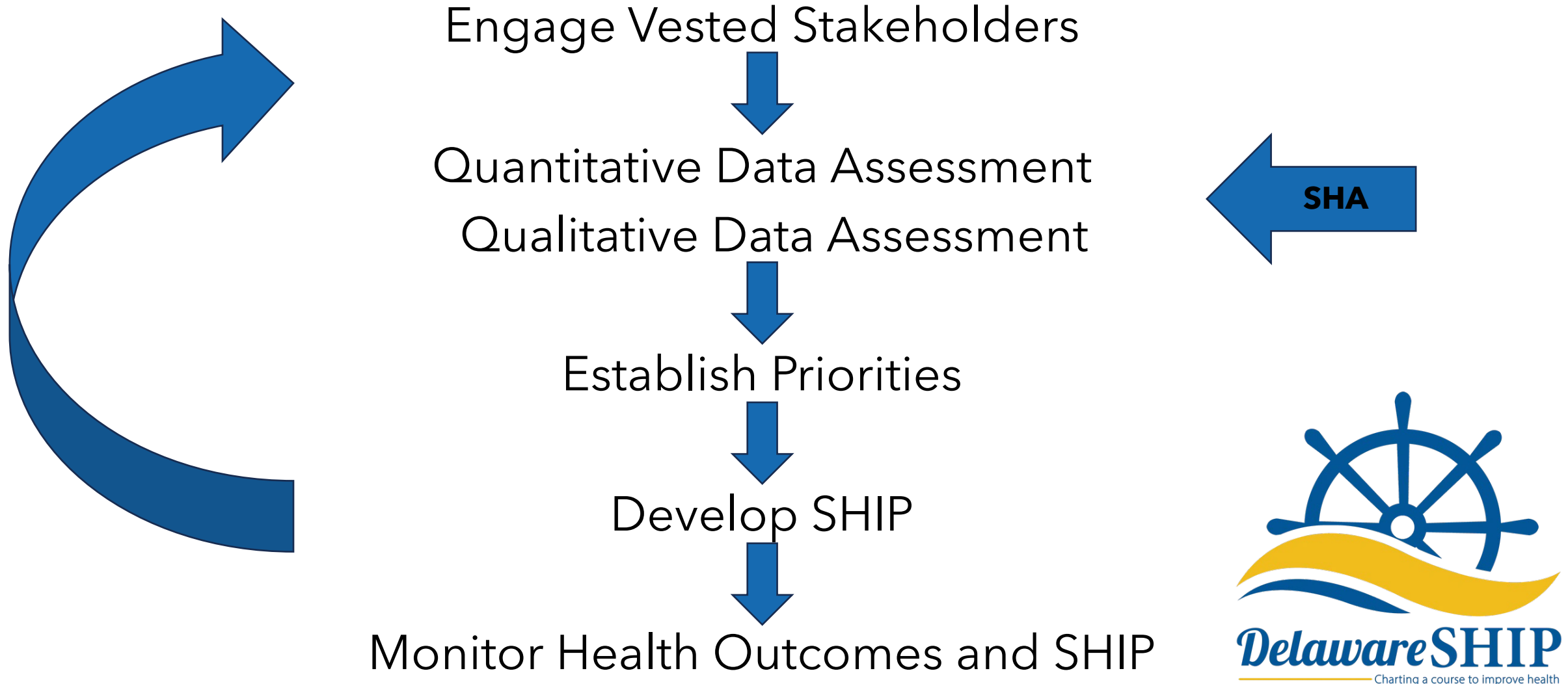
Dr. Jennifer Horney, Interim Director of the Partnership for Healthy Communities



State Health Assessment Update



Delaware SHA/SHIP Framework



Nested SHA/SHIP Framework

- Vital Conditions
- Equity-centered



State Health Assessment

Understand
the Need

Tell the Story

Build
Collaboration



Overall Goal

Collect baseline health and community data using the vital conditions framework for New Castle, Kent, and Sussex Counties that can be used to inform collaborative planning and track measures for success



State Health Assessment Methods

Secondary Data,
Legislative Scan,
and Environmental
Scan

Community Health
Surveys

Community
Conversations

Analysis

SHA Report

Public Comment
Period

Finalize SHA
Report

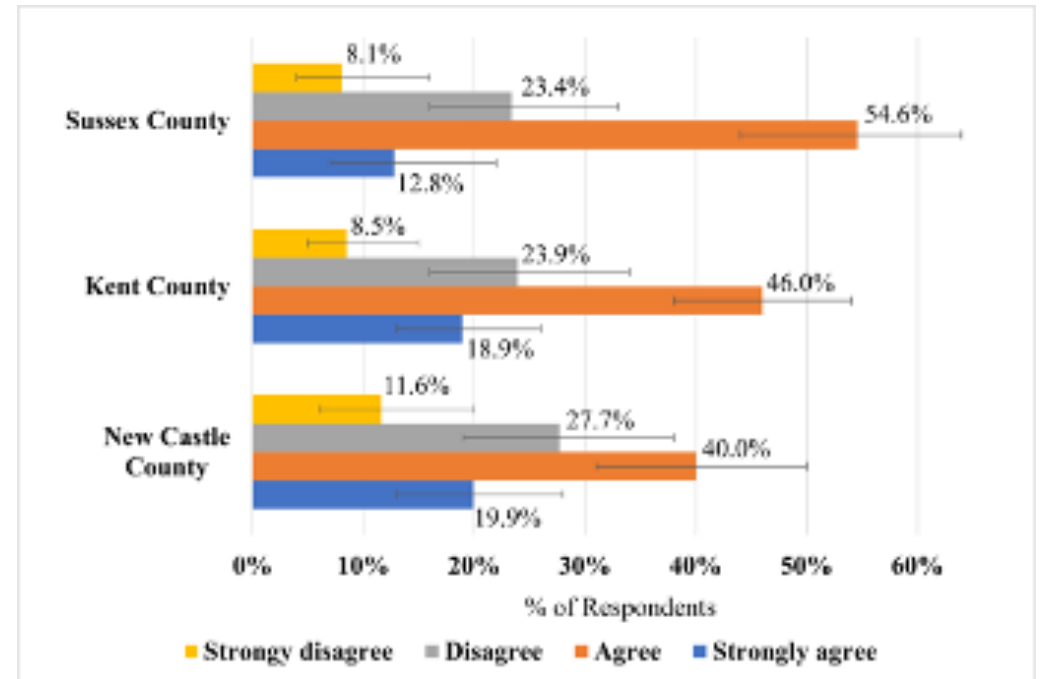
Charting a course to improve health

Preliminary Findings

Community Health Survey

- In all 3 counties, most participants were not asked if they ever had trouble paying for their medications.
- In NC and KC most participants said someone should seek substance use services or treatment for alcohol or drug addiction in a hospital or private facility. In SC, most respondents recommended seeking services or treatment in a private facility.

Figure 1. I Believe that People of All Races, Ethnicities, Backgrounds, and Beliefs in their Community are Treated Fairly by Programs and Institutions", % and 95% Confidence Intervals



Preliminary Findings



Community Conversations

Defining Community

"Community is the village of people around you that support you and your family, but it is also what is around and available to help you survive." --New Castle County Resident

"We all have the same needs and basically need the same kind of help."
--Sussex County Resident

Community Conversations Continued

The **interconnectedness of resources** was consistently recognized by participants in all three counties. For example, participants discussed how **constrained access to transit and transportation limits access to all other resources**.

In Sussex County, the greatest area of concern was the **lack of affordable housing**, which influenced responses throughout the discussion of other vital conditions.

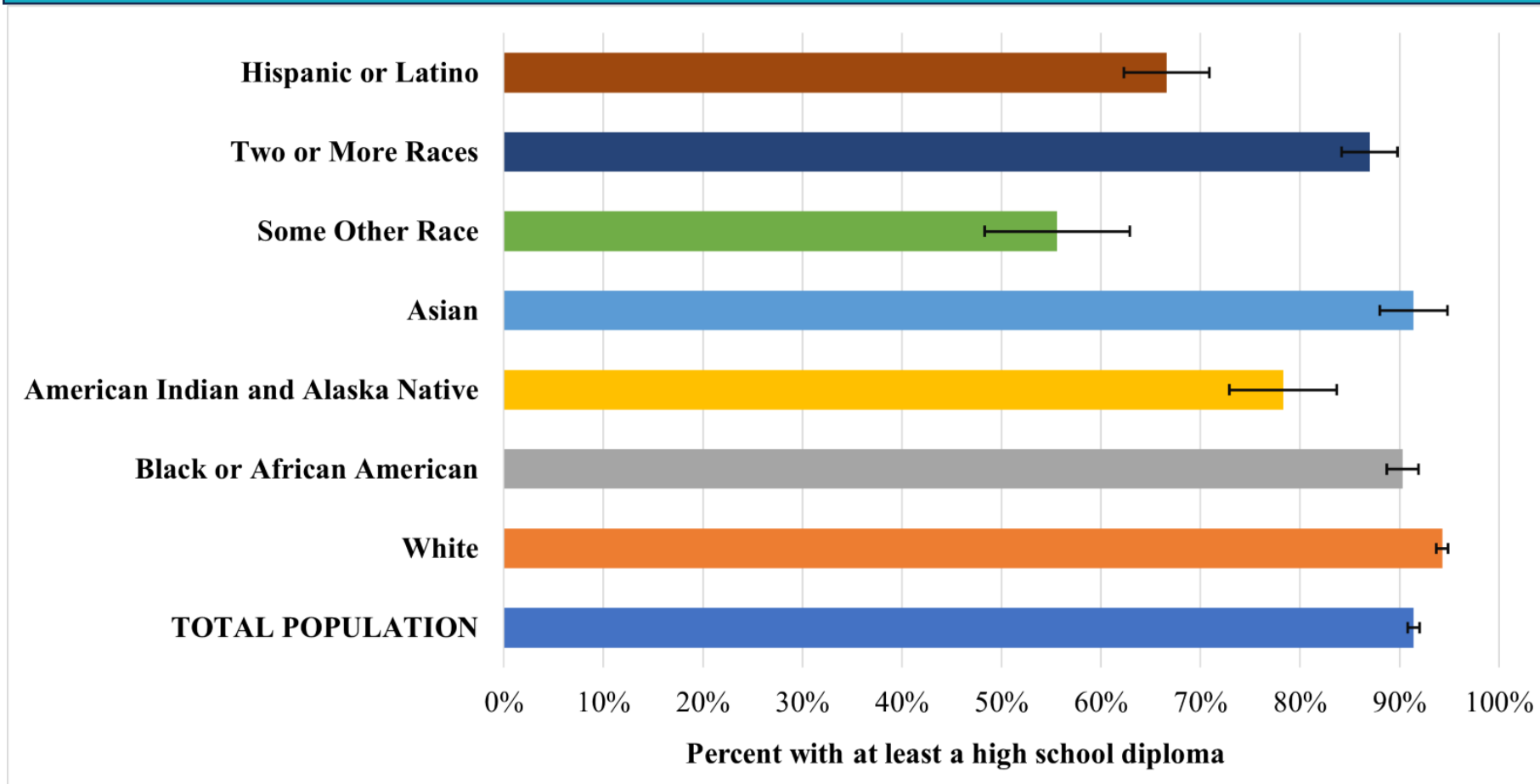
Community Conversations Continued

These findings point to the importance of the following:

- **Gathering more data** from communities with the greatest inequities;
- **Synergizing collaboration** across state and local agencies to elevate efforts, and
- **Increasing community-driven investments** to **improve the vital conditions** for vulnerable communities in Delaware

Snapshot of Demographics

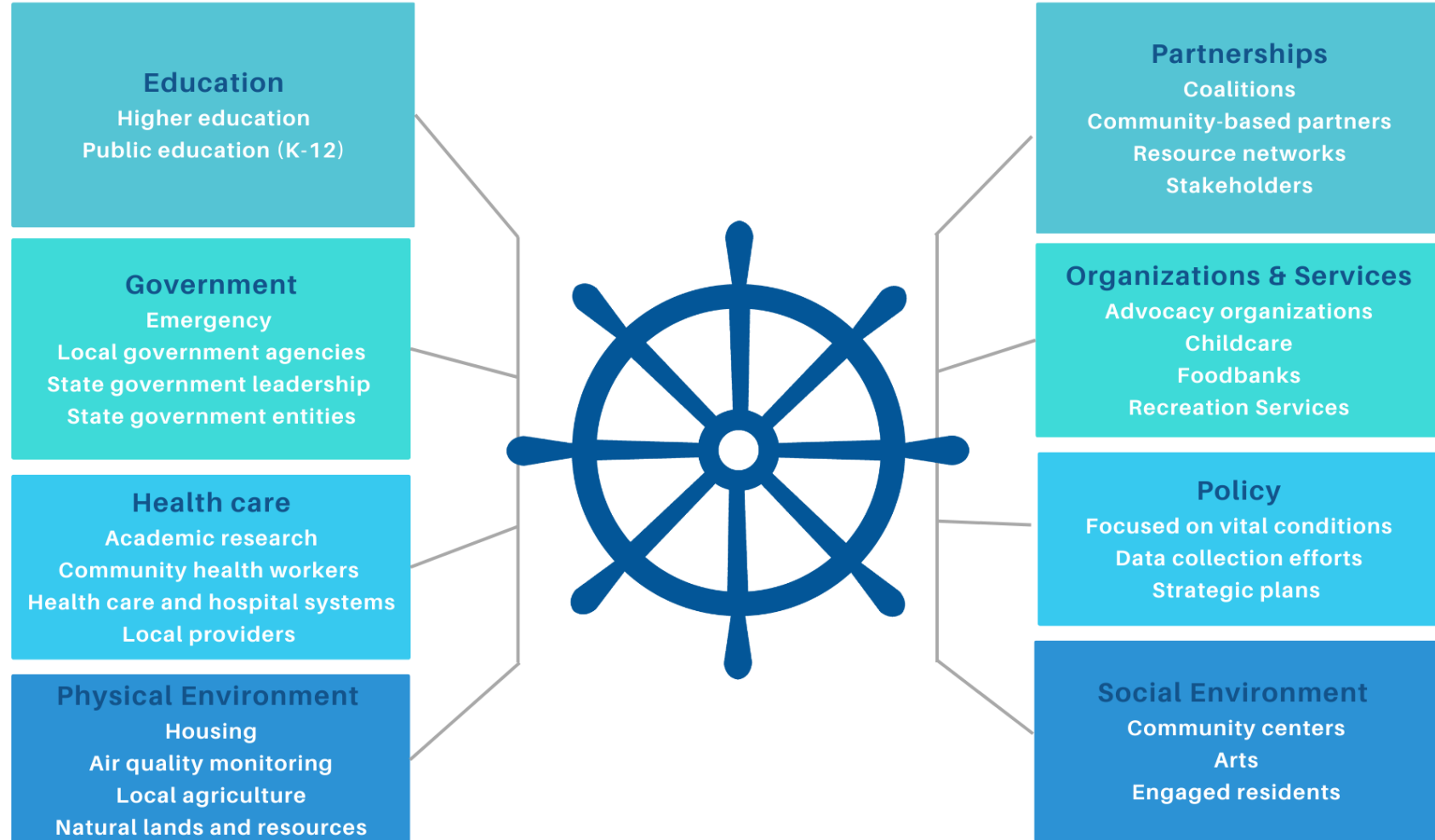
Delaware Population with at least a High School Diploma by Race and Ethnicity, 2021



Data Source: 2021 American Community Survey 1-Year Estimates, Tables B17001 and S1701



Asset Map





Strengths, Weaknesses, Opportunities, and Challenges Results

Strengths

- Appropriate funding, capable Delaware SHA/SHIP contractor to lead the SHIP
- SHIP is a multi-stakeholder effort representing a range of health concerns
- Supportive leadership
- Use of vital conditions

Weaknesses

- Not enough time to address questions in the meetings
- Coalition members unsure about their responsibilities
- No follow-up from past SHIP plans or reports on implementation
- Needs to be more collaborative

Opportunities

- Build a shared understanding of the intersections of social determinants of health
- Share information at townhall meetings
- Create sustainable changes
- More representation and diversity

Challenges

- Trust issues among community members and healthcare systems
- Implementation of suggested changes
- Added funding for future follow-up
- Concerns about lack of merit-based allocation for interventions/policies/organizations

SHA Strengths



All 3 counties were included in the Quantitative and Qualitative Data Assessment



Community Outreach & Partnerships were Strengthened



Community Buy-In



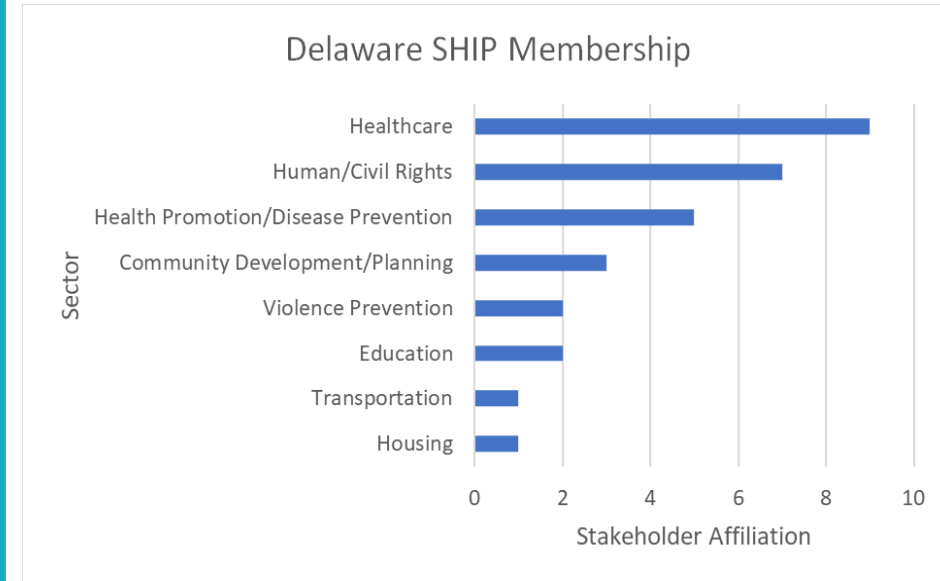
Comprehensive and Robust SHA/SHIP Partnership Coalition

Rosehill Community Center, Green Beret Project, First State Community Action Agency, Bellevue Community Center/Lions Club, Network Connect, Springboard, and many more!

Coalition Facts



- **55** unique agencies/groups participating
- **7** sectors/vital conditions represented
- Attendees per meeting:
 - December 2022: **41** attendees
 - February 2023: **44** attendees
 - April 2023: **32** attendees
 - June 2023: **93** registered attendees
- **117**, total number of attendees



SHA Limitations

This assessment can only say a little, about a lot of things.

Other limitations:

Interviewer-administered surveys, self-selection bias
Some populations likely not adequately represented

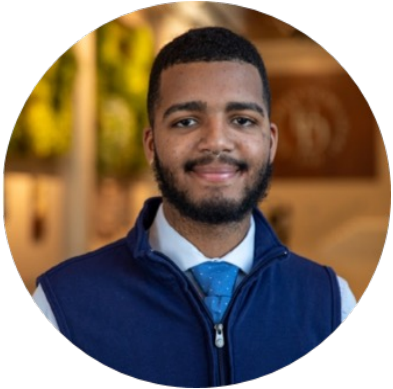


Chat

Questions & Answers



2023 SHA/SHIP Graduates



**Braulio Florentino
Benitez, MPH**
Graduate Research
Assistant

- Community Surveys
- Community Conversations
- Environmental Scan



Danielle Whyte, BA
Undergraduate Intern

- Community Surveys
- Community Conversations
- Legislative Scan



Alexander Burris, MPH
MPH Practicum

- Community Survey, Kent
- Review of Secondary Data



Christiana Oyekanmi, MPH
MPH Practicum

- Equity Definitions & Data
- Community Conversations Sussex

What is the SHIP?

- Sets priorities for a system-wide response to the public health needs of the state
 - Collaborative process
- Describes how we will all work together to improve the health of Delaware
- Informs DPH's strategic plan
- Timeline: New five-year plan for 2023-2028



SHA Evaluation

- Why a rubric is helpful?
- Co-create a SHA rubric for evaluation

[SHA Evaluation Rubric](#)



Public Comment Period

- SHA draft report will be posted on the DPH and the SHIP website.
- Comments will be reviewed and consolidated



SHA/SHIP Partnership Coalition, Engagement

- How would you like to continue to be engaged?
- What would you like your level of engagement to be?

[Jamboard](#)



Thank You!

Our next meeting will be held on

August 3, 2023
11:00 to 1:00 pm
Virtually on Zoom

