

UNIVERSITY OF DELAWARE

STATE HEALTH ASSESSMENT PUBLIC COMMENT MEETING

SEPTEMBER 2024



✦ MEET OUR TEAM ✦



Dr. Alexandra Wynn
Postdoctoral Researcher,
Program of Epidemiology



Katlyn Cullhane-Suluai
Program Manager, Partnership
for Healthy Communities



Dr. Yendelela Cuffee
Associate Director, Partnership
for Healthy Communities



Dr. Jennifer Horney
MPH and PHC Director
Professor & Founding Director
Epidemiology Program



Catlynn Senquiz
Health Behavior Science
Graduate Assistant



James Wallace, MPH



Grace Hrustich
UD Epidemiology Graduate Assistant

WELCOME BACK!



The State Health Assessment (SHA) is here! Today, we will be discussing SHA updates, dissemination of the SHA, and suggestions on how we can share the SHA with more people effectively.

Please be aware that this session is being recorded. If you have any questions and/or concerns, please feel free to email us at info@delawareSHIP.org



REPORT UPDATES

**Chronic
Disease**

**Maternal
and Child
Health**

**Avoidable
Injury**

**Premature
Death**

**Mental
Health**

PUBLIC COMMENT PERIOD

After reviewing the State Health Assessment, we welcome your comments and feedback. Please feel free to share your observations and suggestions via:

- [SHIP Website](#)
- [LinkedIn](#)
- Email
- [Delaware Division of Public Health](#)

FEEDBACK SURVEY

Please consider partaking in our feedback survey! Participation is entirely voluntary, but crucial to the success of our project.

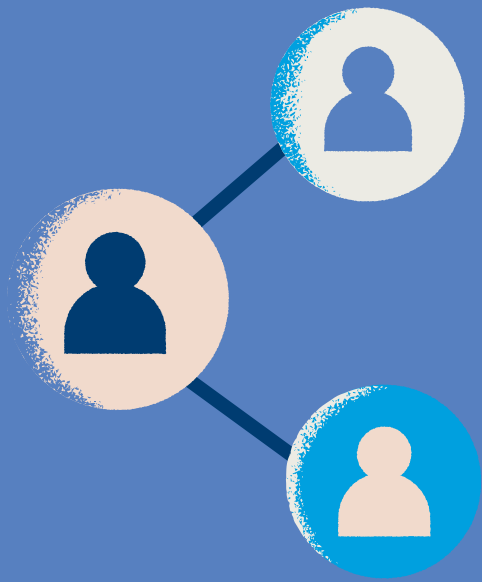
The survey should take between 10–15 minutes to complete. It consists of a series of optional, multiple choice and open-ended questions. Example questions:

6. What information did you find the most useful from the 2023 SHA?

7. Is there any information that you feel should have been included in this draft of the SHA but was not?

9. Please rate how easy this draft of the SHA was to understand and read.

POTENTIAL CHALLENGES



Network

Platforms or methods
for distribution



Target
Audiences

Other collaborations/
partnerships



SUGGESTIONS

- Can you share (website) it with your networks?
- What specific groups should we try to target?
- Are there any list-servs/distribution channels we should send this through?
- How can we connect with other partners?



VITAL CONDITION GROUPS

**We have aligned
you with your
requested vital
condition group**

**Email
Confirmation:

You will receive
further details via
email**

**Consider Lead Role

Think about
whether you are
interested in taking
on a Lead position**

VITAL CONDITION GROUP LEAD ROLES



Point of Contact for Team



Responsible for providing updates in larger meetings on behalf of team



Attend additional brief monthly meeting with other leads and ud team



Q&A FORUM

Feel free to share any questions, comments, or concerns

