

University of Delaware

SHIP Bimonthly Meeting

April 2026



DELAWARE HEALTH AND SOCIAL SERVICES
Division of Public Health



Meet the Team



Dr. Alexandra Wynn
Postdoctoral Researcher
Department of Epidemiology



Katlyn Cullhane-Suluai
Program Manager, Partnership for
Healthy Communities



Dr. Yendelela Cuffee
Associate Director, Partnership for
Healthy Communities



Dr. Jennifer Horney
MPH and PHC Director,
University of Delaware



Sequoia Rent
Chief, Bureau of Health Equity
DPH Deputy Chief Health Equity Officer
Division of Public Health



Ernie Lint
Section Chief, Office of
Performance Management
Division of Public Health



Karen McGloughlin
PH Treatment Program Administrator
Bureau of Health Equity
Division of Public Health



Jamie Kananen, MPH
SHIP Implementation Coordinator
Epidemiologist
Division of Public Health



Catlynn Senquiz
SHIP Implementation Coordinator
Health Promotion, Graduate Assistant
University of Delaware



Athena Bruess
Public Health, Graduate Assistant
University of Delaware



Jordan Myrick
Health Behavior Science
Undergraduate Assistant
University of Delaware



Audrey Orzech
SHIP Student Volunteer
Biochemistry, Undergraduate Student
University of Delaware

Meeting Agenda

Welcome + Meet the Team

Next Bimonthly Meeting + SHIP Updates

SHIP Community Conversations

Feedback on CEU Offerings for BHE Learning Event Series

Community Engagement: Reports, Resources and Upcoming Events

Open Floor for SHIP Coalition

Guest Speaker: Tanya Haling from American Diabetes Association

Priority Health Outcome Breakout Groups

Closing Statements + Time for Questions

Next SHIP Bimonthly Meeting

Mark your calendars!

Date: Monday, June 8, 2026

Time: 11:00 a.m. to 12:30 p.m.

Where: Virtually via Zoom

Zoom Link: <https://udel.zoom.us/j/95895451326>

Guest Speakers: Peter Haag and Scott Neidert from the Delaware Department Of Transportation (DeIDOT)



Roadway Lighting Improvements and Coalition Feedback

Overview (from 2023 VRU Assessment):

- A statewide assessment focused on Vulnerable Road Users (VRUs) identified areas where roadway lighting may need improvement
- Key findings include:
 - New Castle County: All areas and roadway types
 - Kent & Sussex Counties: Arterial roadways
 - Arterial roadways currently without lighting

Current & Planned Efforts:

- Advancing roadway lighting design efforts statewide
- Corridors under consideration include:
 - Naamans Road
 - Foulk Road
 - US 13 (Dover/Camden, Woodside/Felton, Laurel areas)
 - US 113 (Milford)

Coalition Feedback Request:

- What locations or corridors have lighting concerns?
- Where are there gaps impacting safety, especially for pedestrians or cyclists?
- What areas need additional support or prioritization?

The full VRU assessment is available on Delaware's Strategic Highway Safety Plan website at deldot.gov/Programs/DSHSP/.

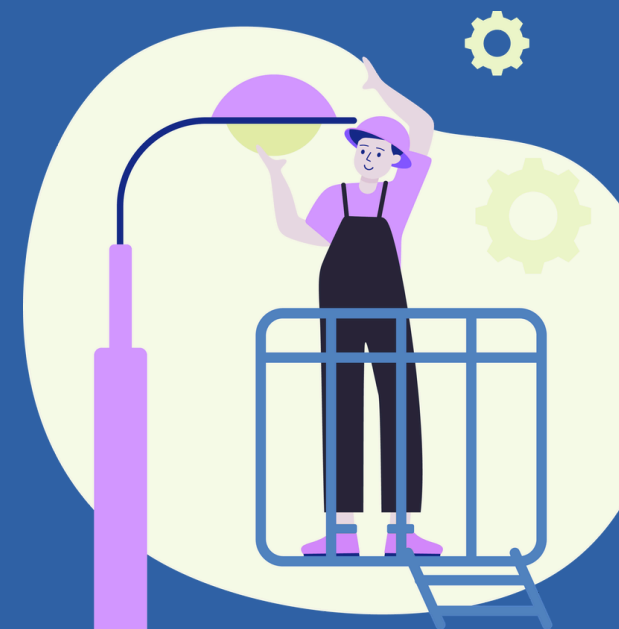
Roadway Lighting Improvements and Coalition Feedback

Information on Reporting Streetlight Concerns:

- If members have concerns about streetlighting, they can report the issue through the DelDOT app or by submitting a request via the Report Road Condition form online.
 - However, if the streetlight is mounted on a utility pole, the outage must be reported directly to the appropriate utility company

Utility and Municipal Streetlight Resources for Kent and Sussex County:

- Delmarva Power -> Report a Streetlight Outage
- Delaware Electric Cooperative (DEC) - > Lighting Maintenance Request
- City of Dover: 302-736-7086
- City of Milford: www.cityofmilford.com/535/MyMilford
- City of Lewes: www.lewesbpwde.gov/report-an-electric-outage-or-water-issue/
- City of Seaford: 302-629-9841 or 302-629-4550



February Bimonthly Review: Premature Death

- **MeadowWood Behavioral Health Hospital:**
 - “An inpatient hospital in New Castle and Wilmington, Delaware are that offers multiple levels of care for adolescents, adults, and seniors dealing with mental health and substance use issues.”
- **HERO HELP:**
 - “A collaboration between the Division of Police, the Delaware Department of Justice and the State Division of Substance Abuse and Mental Health to provide drug and/or alcohol addiction treatment to qualifying adults who contact the police and ask for treatment, or to individuals in lieu of an immediate arrest for lesser crimes”



February Bimonthly Review: Mental Health

- Gather research on populations served by age and providers who speak multiple languages
- Art therapists
- Programs or certifications for fask-tracking and mental health professional education/degree options in the state
- Resources for Plain Language and Accessibility
- Information on Safe and Accessible Spaces for Community Members



February Bimonthly Review: Avoidable Injury

- Federal and State Fuel Tax is the primary revenue source for the transit system, and Federal Fuel Tax hasn't been raised since the Clinton Administration
 - "The Omnibus Budget Reconciliation Act of 1993, signed by President Bill Clinton on August 10, 1993, increased the gas tax by 4.3 cents, bringing the total tax to 18.4 cents per gallon...That is where the gas tax remains today."
 - A 2022 article published by Delaware Live news states that "taxes on the sale of gasoline fund a huge portion of roadwork, including repaving and safety concerns."
 - Delaware's motor fuel tax (MFT) is lower than surrounding states (the MFT in Pennsylvania is \$0.622, based on 2023 data)



National Standards for Culturally and Linguistically Appropriate Services in Health and Health Care

- Culturally and Linguistically Appropriate Services (CLAS) are health services that respect and respond to the cultural beliefs, practices, and language needs of diverse people.
- The Community Health Advocacy Mobilization Group (CHAMG) and the Delaware State Health Improvement Plan (SHIP) share 15 modified CLAS principles to help community organizations improve programs and services for all Delaware residents.

National Standards for Culturally and Linguistically Appropriate Services in Health and Health Care

Culturally and Linguistically Appropriate Services (CLAS) are health services that respect and respond to the cultural beliefs, practices, and language needs of diverse people. The Community Health Advocacy Mobilization Group (CHAMG) and the Delaware State Health Improvement Plan (SHIP) share 15 modified CLAS principles to help community organizations improve programs and services for all Delaware residents.

Principal Standard

Provide respectful, effective, and clear care that respects cultural health, languages, health literacy and contact needs.



Governance, Leadership and Workforce

- Promote and maintain governance and leadership that support CLAS through policies, practices, and resources.
- Recruit, promote, equip, and support a workforce that can meet the digital, cultural, and language needs.
- Teach and train governance, leadership, and workforce on CLAS practices and resources.

Communication and Language Assistance

- Offer language assistance at no cost to individuals with limited English proficiency and other communication needs to ensure timely access to all health care services.
- Inform all people, in writing and orally, of the availability of language services in English and other languages are there to meet their needs.
- Ensure that trained and certified individuals provide language assistance whenever possible, and avoid using untrained people or minors as interpreters.
- Provide clear digital and print materials in the languages used by the people in the service area.

Engagement, Continuous Improvement, and Accountability

- Set clear cultural and language goals, policies, and duties that everyone in the group can grasp and relate to, and ensure they are included in all planning and daily activities.
- Evaluate how the group is including CLAS-related activities into quality improvement efforts.
- Collect and maintain up-to-date demographic data to assess how CLAS affects health results and to help plan services.
- Evaluate the community's strengths and needs, and use this information to design and deliver services that match the cultural and language preferences of the area.
- Work with the community to create, run, and assess ways that respect their culture and language.
- Create culturally and linguistically appropriate processes to identify, prevent, and resolve conflicts.
- Provide regular updates to stakeholders, members and the public on progress toward implementing and sustaining CLAS.



Source: Office of Minority Health, U.S. Department of Health & Human Services. National CLAS Standards. Think Cultural Health (<https://thinkculturalhealth.hhs.gov/klas/standards>)

SHIP Community

Conversations Have Begun!

Date: Monday, April 27

Time: 5:00 p.m to 6:30 p.m.

Partner: UD Pride Caucus

Location:

- Route 9 Library (3022 New Castle Ave, New Castle, DE 19720)
- Virtual option via Zoom available. ([Click here](#))

Population of Focus:
LGBTQIA+ Community

Date: Thursday, May 7

Time: 5:00 p.m to 6:30 p.m.

Partner: Sussex County Health Coalition

Location:

- Rural Innovation Hub (21133 Sterling Ave, Suite 12 Georgetown, DE 19947)
- Virtual option via Zoom available. ([Click here](#))

Population of Focus:
Senior Community

Date: Monday, May 11

Time: 5:00 p.m to 6:30 p.m.

Location:

- Freedom Independent of Living (105 Sleepy Hollow Dr # A, Middletown, DE 19709)
- Virtual option via Zoom available. ([Click here](#))

Population of Focus:
Residents with Disabilities Community

Date: Wednesday, June 24

Time: 5:00 p.m to 6:30 p.m.

Location:

- NeighborGood Partners (363 S Saulsbury Rd. Dover, DE 19904)
- Virtual option via Zoom available. ([Click here](#))

Population of Focus: Housing Insecure Community

Everyone is welcomed to join! Flyers will be emailed and posted on social media. Please share with your broader networks.

Help Us Shape CEU Offerings for the BHE Learning Series

- We are planning a 5-part Bureau of Health Equity (BHE) Learning Event Series for Fall 2026!
 - Topics Confirmed:
 - Black Maternal and Infant Health
 - LGBTQIA+ Health
- We would like to offer Continuing Education Units (CEUs) for participants
- We want to ensure CEUs offered are relevant and valuable

Question: What types of CEUs would be most beneficial for you, your organization and/or community members?

Community Engagement

Sharing upcoming events, resources, and reports.



New Publication in the Delaware Journal of Public Health

- The article, ***“How Strong Data Infrastructure Could Transform Delaware’s Firearm Violence Prevention Ecosystem,”*** was recently published in the Delaware Journal of Public Health
- The publication was developed by Dr. Lauren Footman and Danielle Fisher from End Community Violence Now along side Dr. Alexandra Wynn from the Delaware SHIP
- The article examines firearm violence in Delaware as a preventable public health crisis with significant impacts on communities.
- It highlights how fragmented data systems limit effective prevention and response efforts.
- The authors call for stronger, more coordinated data infrastructure to support community violence intervention strategies and reduce firearm violence statewide.

Click [here](#) or visit to read the full publication.

SHIP Submits Commentary to DJPH

- **Our team submitted SHIP Commentary to the Delaware Journal of Public Health (DJPH) special issue: “Science Under Fire: The Future of Academics and Research.”**
- The article highlights the Delaware SHIP as a model of collaborative, data-driven public health planning and implementation.
 - It summarizes early SHIP progress since 2025, including measurable improvements across the five priority health outcomes (chronic disease, maternal and infant health, avoidable injury, mental health and premature death).
 - Notable early outcomes include: reductions in obesity, tobacco use, opioid use, and excessive alcohol consumption, alongside improvements in diabetes management and preterm birth rates.
- This work was developed in collaboration with Esther Curtis from the Mental Health Association of Delaware and submitted by our team as part of ongoing dissemination of SHIP progress and impact!

DPH Releases Latest Cancer Incidence and Mortality Trends in Delaware

- New data from the Delaware Division of Public Health (DPH) shows that cancer mortality rates in Delaware have continued to trend downward.
 - From 2008 to 2022, both Delaware and the United States saw an average annual decrease of about 1.5% in cancer-related deaths.
- Some key findings:
 - The most common cancers diagnosed in Delaware are breast, prostate, lung, and colorectal cancer.
 - Leading causes of cancer-related deaths are lung, breast, prostate, colorectal, and pancreatic cancer.
 - Cancer mortality rates have declined among non-Hispanic White and non-Hispanic Black males since 2008, while remaining relatively stable for females and Hispanic populations.
 - Delaware has improved significantly in national rankings, moving from 2nd highest in the 1990s to 15th in cancer mortality today.

Click [here](#) to access the full release or visit publichealthalerts.delaware.gov



DELAWARE HEALTH AND SOCIAL SERVICES
Division of Public Health

Spotlight Delaware's Health Care Summit

When: Wednesday, April 29, 2026

Time: 9:00 a.m. to 4:00 p.m.

Where: The Audion at the University of Delaware's STAR Campus
(100 Discovery Blvd Newark, DE 19713)



Click [here](#) to buy your tickets!

The Spotlight Delaware Health Care Summit will bring together industry leaders, policymakers, providers, and educators to discuss some of the most pressing health care challenges facing Delaware, including access to care, workforce shortages, and system improvements. It also provides a forum for collaboration and idea-sharing aimed at advancing solutions and shaping the future of health care in the state.

The SHIP Team will be there, so come say hi if you are attending!



The 4th Annual Advancing Healthy Lifestyles Conference: Taking Action for Healthier Communities

When: Thursday, June 4, 2026

Time: 8:00 a.m. to 4:00 p.m.

Where: Bally's Dover Casino Resort
(1131 N Dupont Hwy, Dover, DE 19901)

Click [here](#) to register!

Learn practical methods that you can use to take action and foster healthy lifestyles in your communities. Plus poster sessions, interactive activities, networking opportunities, and a chance to earn Certified Health Education Specialist (CHES) Continuing Education Units (CEUs). You won't want to miss this day dedicated to healthy living.



Secure your spot today!

THE FOURTH ANNUAL
ADVANCING
HEALTHY LIFESTYLES
CONFERENCE:

Taking Action
for Healthier
Communities

JUNE 4, 2026
8:00 a.m. to 4:00 p.m.

Register Now!

**NEW
LOCATION!**

JOIN US AT OUR NEW LOCATION!
Bally's Dover Casino Resort
1131 N. DuPont Highway, Dover, DE 19901

2026 Delaware Rural Health Conference

When: Tuesday, June 9, 2026

Time: 8:00 a.m. to 4:00 p.m.

Where: Bayhealth Blue Hen Conference Center
(665 Bay Road, Unit A, Dover, DE 19901)

Click [here](#) to register!

Register for a day focused on the rural health of Delaware! This year's conference will highlight major changes shaping Delaware's rural health landscapes, featuring insights from leaders driving transformation and strategies to improve access, strengthen systems, and support communities.



2026 DELAWARE RURAL HEALTH CONFERENCE

Delaware Rural Health: Expansion, Access, and Innovation

Join us for a day focused on the future of rural health in Delaware. This year's conference will highlight major changes shaping Delaware's rural health landscape, featuring insights from leaders driving transformation and strategies to improve access, strengthen systems, and support communities.

Keynote Speaker: Sylvain Charlebois, PhD
International Speaker and "The Food Professor"
A globally recognized expert in food policy and distribution, Dr. Charlebois leads the Agri-Food Analytics Lab at Dalhousie University and is the lead author of Canada's Food Price Report.



Keynote Speaker:
Sylvain Charlebois, PhD
International Speaker and "The Food Professor"

THIS YEAR'S PANELS

- * Rural Health Transformation Panel
- * Opportunities in Funding Rural Health
- * Food is Medicine: Promising Practice
- * Value-Based Care: A Rural Perspective
- * Building a Comprehensive Workforce Pathway

June 9, 2026
8:00 a.m. - 4:00 p.m.

Bayhealth Blue Hen Conference Center

REGISTER

Complimentary breakfast and lunch will be provided
Space is limited. Register early to secure your spot

DELAWARE HEALTH AND SOCIAL SERVICES
SUSSEX COUNTY HEALTH COALITION
DELAWARE HEALTH AND SOCIAL SERVICES



Open Floor for Coalition

This is an opportunity for participants to share organizational updates, including legislation, recent reports, programming resources, upcoming events, and/or recent accomplishments.





Welcome Guest Speaker

Tanya Haley from the
American Diabetes Association



Breakout Groups

- During each session, breakout groups will hold brief discussions and then report back to the full group. This process ensures that every priority health outcome receives cross-sector input.
- In today's meeting, we will focus on a selected set of objectives for your priority health outcome and identify ways to support actions through collaboration and alignment.



Thank You for
coming today!
Any Questions?



Email

info@delawareship.org

Website

delawareship.org