

University of Delaware

SHIP HOLIDAY MEETING

December 2024



Meet Our Team



Dr. Alexandra Wynn

Postdoctoral Researcher, Program
of Epidemiology



Katlyn Cullhane-Suluai

Program Manager, Partnership for
Healthy Communities



Dr. Yendelela Cuffee

Associate Director, Partnership for
Healthy Communities



Dr. Jennifer Horney

MPH and PHC Director
Professor & Founding Director
Epidemiology Program



Catlynn Senquiz

Health Promotion
Graduate Assistant



Grace Hrustich

Epidemiology Graduate Assistant



Ellery Bergman Chudnow

Health Behavior Science
Undergraduate Assistant



Bree Nehru

Epidemiology Graduate Assistant

Welcome Back!

Ahoy, and thank you for setting sail with us on this journey! Your dedication and efforts are the true wind in our sails, and we couldn't be more grateful for all that you do. As we gather today, we're excited to:

- Chart a Course for Connection: This is a wonderful opportunity to meet and reconnect in person, strengthen our ties, and build on the partnerships we've cultivated.
- Anchor Our Efforts: We'll be reviewing the final details for the SHA and legislative updates to ensure we're all on the same page and ready to navigate the path ahead with confidence.
- Navigate the Future Together: We'll discuss our collective progress, celebrate our successes, and continue to steer toward our shared goals—ensuring that our collaboration remains as strong and steady as ever.

We're excited for today's session and the opportunity to continue working together toward smoother sailing in the months ahead!

Upcoming Announcements

- Next Bimonthly Meeting (tentative January 2025):
 - Calendar invite will be sent once we come back from the Holidays
 - Leads will also be reaching hearing from us in January
- SHA/SHIP Updates:
 - We are in the process of editing the SHIP, with more updates to come
 - Please fill out the progress survey and continue reviewing the goals, objectives, and strategies sheet
 - We will continue developing and updating the SHIP, expect an annual report outlining progress
 - This is an evolving, nonlinear process
 - The SHA is in its final round of review with the addition of the HLA
- Please join us on Microsoft Teams :)

Community Calendar

We're excited to share a selection of upcoming events happening throughout the community and we invite you to share events as well. We'll do our best to keep this calendar updated with the most current information!

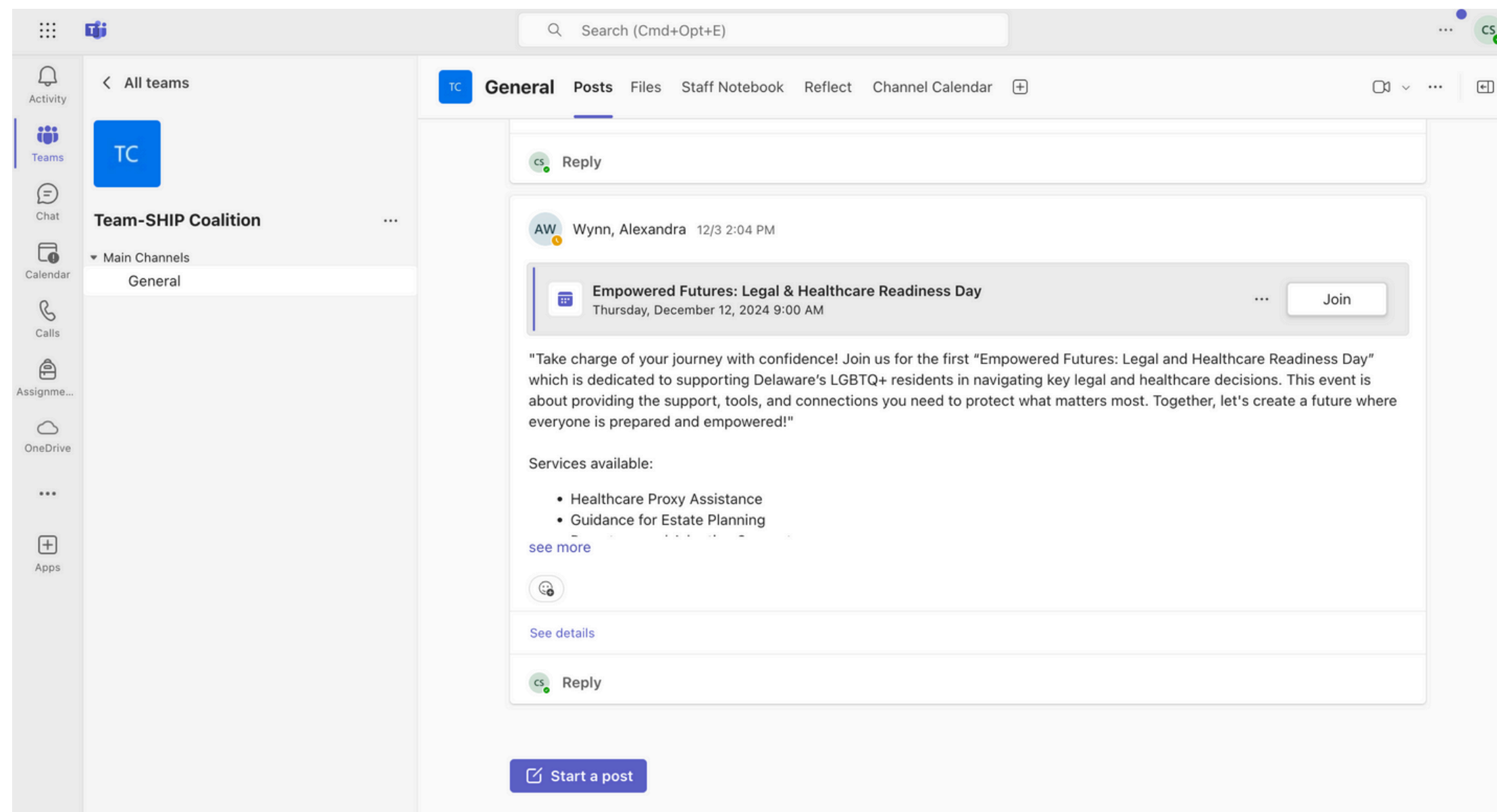
- These events are not primarily SHA/SHIP events, but they are valuable opportunities that we believe may be of interest to you
- We aim to highlight community-driven events, resources, and initiatives that support our collective work

For each event:

- Please check the notes for details on how to register
- Look for information on whether the event is in-person or online

Community Calendar

The Community Calendar is located within our Teams- SHIP Coalition Page on Microsoft Teams. If you still do not have access, or have any trouble please reach out to us.



Legislative Updates

- **Senate Bill 56**

- This Act codifies the Opportunity Fund, an additional source of educational funding for Delaware public schools intended to support the increased needs of low income and English learner students, and establishes the parameters for how the funding is to be distributed to school districts and charter schools.

- **Senate Concurrent Resolution 36**

- This resolution directs the Delaware Department of Education and the Delaware Early Childhood Council to create a state target compensation scale and professional career pathway for early child care educators who teach ages birth through five years and issue a comprehensive written report by December 1, 2021



Legislative Updates

- **Senate Concurrent Resolution 55**

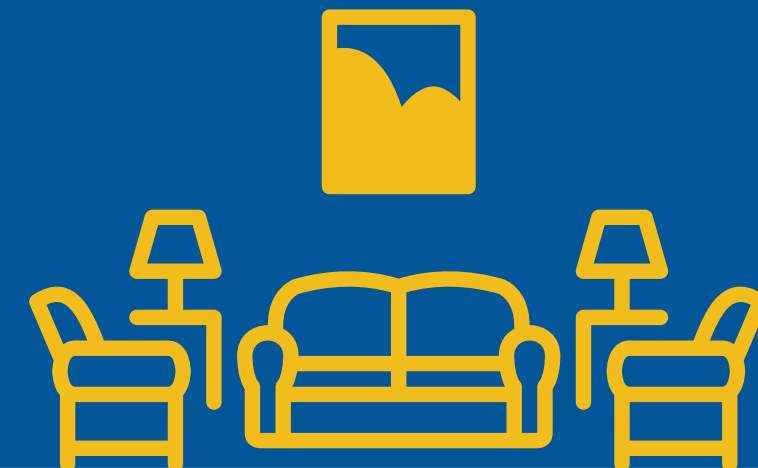
- A single, statewide system guided by aligned processes should be developed whenever possible for the following categories: **registration and attendance, curriculum recommendations and assessments, health and developmental screenings, early intervention, special education identification and referral, adult to child ratios and maximum group size for designated age groups**, and requirements for educator and administrator licensure, certification, and professional development.
- Through the development of a statewide curriculum, literacy is included in the education requirements in Delaware. This is **only for children ages 0-5**.



Legislative Updates

- **Senate Concurrent Resolution 50**

- This Senate Concurrent Resolution establishes the creation of an annual report on home visiting programs in Delaware.
- The report, prepared by the Department of Health and Social Services with input from the Department of Education and the Delaware Home Visiting Community Advisory Board, will be reviewed by key state entities by December 1 each year.
- It will include a summary of current practices, challenges, and program recommendations.



Legislative Updates

- **House Bill 202**

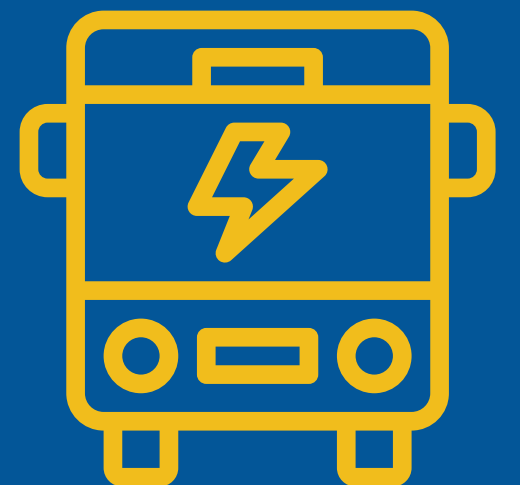
- This Act aims to enhance developmental screening for Delaware children under 5 to identify those eligible for Early Intervention or special education services.
- Starting July 1, 2023, child care providers must ensure each enrolled child undergoes developmental and social-emotional screening using a tool approved by the Department of Education. The screening will be administered by the child's parent or guardian.
- The Act also allows YMCA child care operators to join the Provider Advisory Board and updates language from "day care" to "child care" in existing law.



Legislative Updates

- **House Bill 10**

- This Act establishes targets for annual purchase of electric school buses through fiscal year 2030.
- Requires the Department of Education to submit an annual implementation report through 2029.
- Requires the Department of Education to submit a comprehensive report in 2030 detailing future recommendations for electric vehicle purchases and other measures to reduce the carbon and environmental impact of the State's school transportation fleet.



Legislative Updates

- **House Bill 222**

- This Act simplifies the requirements and process for health-care providers and eliminates confusion that may be causing the low compliance rate for screening or testing for blood lead levels. Specifically, this Act does the following:
 - (1) Defines “screening” and “testing” for clarity
 - (2) Mandates screening, defined as a capillary blood test, at or around 12 and 24 months of age
 - (3) Clarifies insurance coverage for the costs of compliance with the Act
 - (4) Directs the Division of Public Health to report on elevated blood lead levels to the General Assembly annually and to develop regulations to implement and enforce the Act within 12 months of being enacted
 - (5) Makes technical corrections to conform existing law to the standards of the Delaware Legislative Drafting Manual



Legislative Updates

- **Senate Bill 158**

- This bill expands prison-based jobs to provide work experience and job training, aiding offender reentry while supporting DOC facilities.
- Due to budget constraints, DOC has been unable to increase job opportunities or incarcerated wages
- Allowing offenders to be compensated or earn additional “good time” credits will expand work opportunities and incentivize participation in approved programs, enhancing the chances for rehabilitation.





SHA Public Comment Feedback

SHA Public Comment Feedback

Reliable Transportation and Humane Housing

- Why is Sussex's county vacancy proportion so high?
- How can we think about health via a mobility lens vs a transportation one?
- What are other indicators that are important to include when thinking about reliable transportation?

Lifelong Learning and Meaningful Wealth

- How can we conduct a more comprehensive analysis of the current state of education and literacy? What resources are available to support this effort, and which organizations should we turn to for guidance and data?
- Would a more direct measure of knowledge and critical thinking provide a more accurate assessment than using the highest level of education? If so, does anyone have suggestions for an alternative indicator?
- How can ongoing education help reduce recidivism among individuals who are incarcerated?

SHA Public Comment Feedback

Basic Needs

- How can we effectively recruit and retain local doctors, nurses, and other healthcare providers? What are the specific staffing needs we must address?
- How can we help alleviate physician burnout? Someone mentioned state resources, such as insurance support and wrap-around services, including libraries. Could we explore this further?
- How do we get retired residents to closer available medical care?
- How can we address trauma beyond domestic violence? Where can we access relevant data sources and ensure safety?

Health Literacy Appendix

HUMANE
HOUSING AS A
VITAL CONDITION



BELONGING & CIVIC
MUSCLE AS A VITAL
CONDITION



BASIC NEEDS FOR
HEALTH & SAFETY AS
A VITAL CONDITION



RELIABLE
TRANSPORTATION AS
A VITAL CONDITION



MEANINGFUL WORK &
WEALTH AS A VITAL
CONDITION



LIFELONG
LEARNING AS A
VITAL CONDITION



Any Questions?

Happy Holidays!

See you next year!
