

University of Delaware

SHIP BIMONTHLY MEETING

November 2024



Meet Our Team



Dr. Alexandra Wynn

Postdoctoral Researcher, Program
of Epidemiology



Katlyn Cullhane-Suluai

Program Manager, Partnership for
Healthy Communities



Dr. Yendelela Cuffee

Associate Director, Partnership for
Healthy Communities



Dr. Jennifer Horney

MPH and PHC Director
Professor & Founding Director
Epidemiology Program



Catlynn Senquiz

Health Promotion
Graduate Assistant



Grace Hrustich

Epidemiology Graduate Assistant



Ellery Bergman Chudnow

Health Behavior Science
Undergraduate Assistant



Bree Nehru

Epidemiology Graduate Assistant



Elena Lynn

Health Behavior Science
Undergraduate Assistant

Welcome back!

In today's meeting, we will discuss enhancing team dynamics and communication strategies. We will introduce using Teams for the vital condition groups as well as our Progress survey and online input hub. Updates will be provided on our goals, objectives, and strategies. We will discuss upcoming meetings and those meetings goals. Breakout groups will be conducted today to identify group leads and outline specific action plans, in order to ensure all voices are heard and key stakeholders are included in our conversations.

Mircrosoft Teams



Progress Survey & Online Input Hub

Progress Survey

This survey is designed to track progress, updates, and questions when developing your action plans. It also serves to assess your current satisfaction with SHIP and identify how we can best support you.

The [Progress Survey](#) is located on the Delaware SHIP Website under the SHIP Coalition tab.

Example Questions:

- Please rate your overall satisfaction with the SHIP Process
- Please provide an update on the status of your progress toward your vital condition's group action plan

Online Input Hub

This survey is designed to capture your thoughts, questions, and suggestions related to our projects, team goals, and communication.

The [Online Input Hub](#) is located on the Delaware SHIP Website under the SHIP Coalition tab.

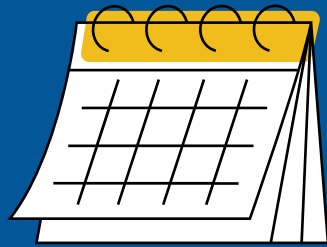
Example Questions:

- Are there any topics you feel need more discussion in our meetings?
- What questions do you have about our current projects, initiatives, or team goals that you feel have not been addressed?

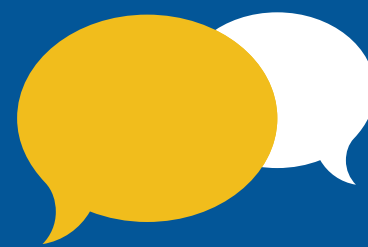
UD Expectations



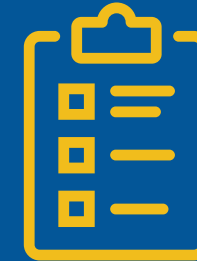
Website Updates
after each
Meeting



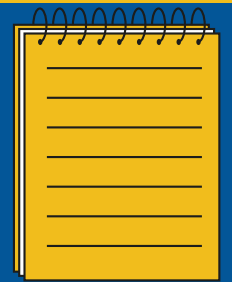
Community
Calendar
Updates



Summary of Group
Conversations at the
Start of Each
Meeting



Distribute the
Survey



Take Notes and
Record During
Meetings

SHIP Brainstorming Activity

We greatly appreciate the insights and suggestions you've provided, as they play a crucial role in shaping the progress of the SHIP. While we couldn't incorporate every suggestion into the current framework, we want to assure you that remaining ideas have been documented in an appendix under an "Additional Objectives" section. This allows us to keep track of these valuable inputs for future consideration and potential integration.

SHIP Updates

🔍 Mental Health: ✕

- Health Provider Shortage
- Health Insurance
- Depression
- Suicide

🔍 Chronic Disease: ✕

- Food Insecurity
- Physical Activity
- Obesity
- Vegetable Intake
- Smoking
- Preventive Services (e.g. routine health visit)
- Risk Factors (e.g. high blood pressure)
- Conditions (e.g. diabetes)

🔍 Maternal & Infant Health: ✕

- Maternal Death
- Postpartum Depression
- Preterm Births
- Infant Death
- Low Birth Weight
- Prenatal Care
- Postpartum Care

🔍 Avoidable Injuries: ✕

- Public Transportation
- Walkability
- Bicycle Paths/Safety
- Vaccines
- Motor Vehicle Deaths
- Falls in Older Adults
- Homicides
- Gun Safety
- Domestic Violence

🔍 Premature Death: ✕

- Drug-related Substance Use in youth and adults
- Alcohol Consumption in youth and adults

SHIP Next Steps

The proposal is currently under review by DPH, and the public comment period for the SHIP is expected to open in January or February.

December Holiday Party



Upcoming Meetings

**Bimonthly:
January 2025**

**Quarterly:
March 2025**

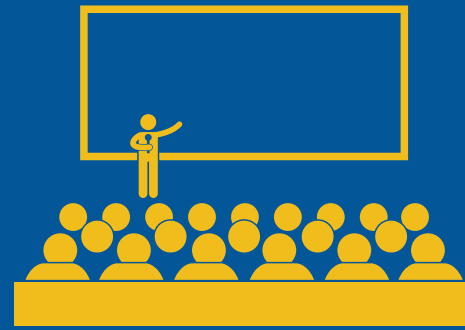
Topics for Discussion:

- Reflect on Feedback from the SHA Public Comment Period
- Discuss SHIP Goals & Strategies

Breakout Rooms



Pick Group
Leads



Upcoming Gun
Violence
Conference



Who is missing
from these
conversations?

Any Questions?

Let's Get Started!
