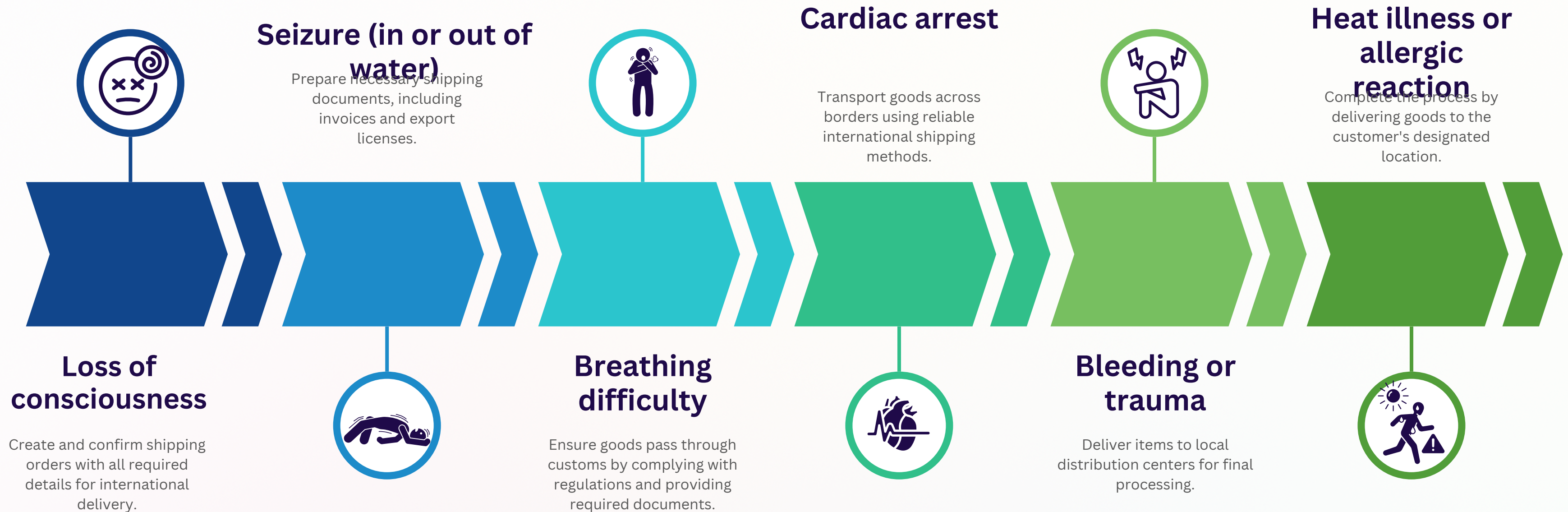


Emergency Action Plan (EAP) – Medical Incident



Initial Response:



Primary Responder (On-Scene Staff):

Step 1



Perform initial assessment (responsiveness, airway, breathing, circulation).

Move the victim only if there's danger or it's safe to do so.

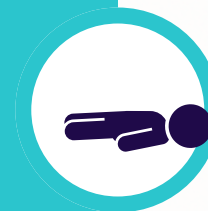
Step 2



Begin care:

Unresponsive, no pulse: Start CPR and apply AED.

Step 3



Breathing but unresponsive:

Monitor and place in recovery position.

Step 6



Bleeding:

Apply direct pressure, elevate limb if needed.

Step 5



Seizure:

Protect victim's head, do not restrain, monitor breathing post-seizure.

Step 4



Support Staff:

Bring emergency equipment (AED, first aid, oxygen).

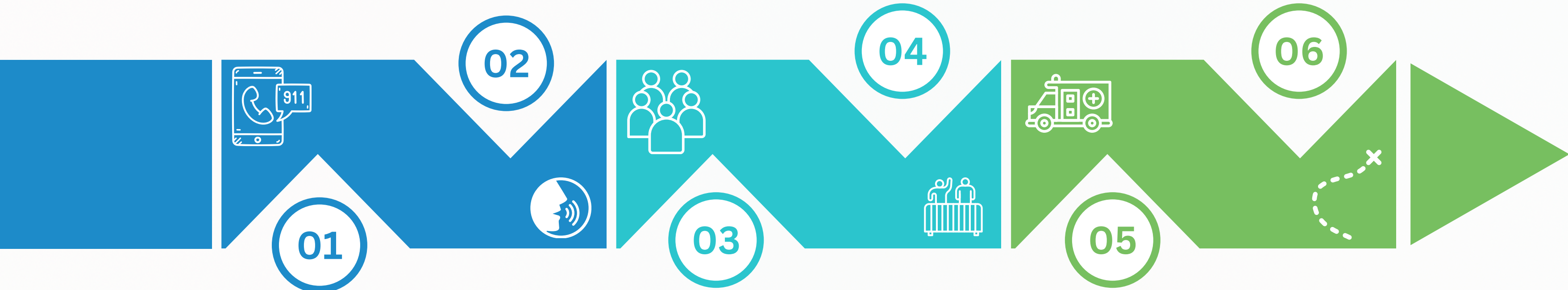
EMS Notification & Scene Control

EMS Contact:

Call 9-1-1 or follow facility emergency call procedure.

Crowd Control & Scene Safety:

Assign staff to meet EMS at entry point.



01

02

03

04

05

06

Provide:

- Facility address and location of incident
- Victim condition and care being provided
- Entry instructions for EMS

Clear unnecessary patrons from the area.

Ensure clear access to victim.

Transportation

Shipping Preparation



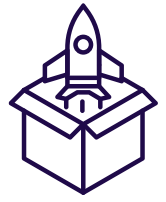
Organize and prepare items for transportation, ensuring all documentation is complete.

Route Planning



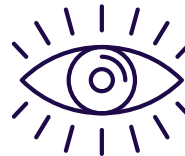
Determine the most efficient routes to optimize delivery times and costs.

Transport Start



Initiate the transportation process, ensuring vehicles are ready and loaded.

Shipment Monitoring



Track the shipment in real-time to ensure timely and secure delivery.

Handling Issues



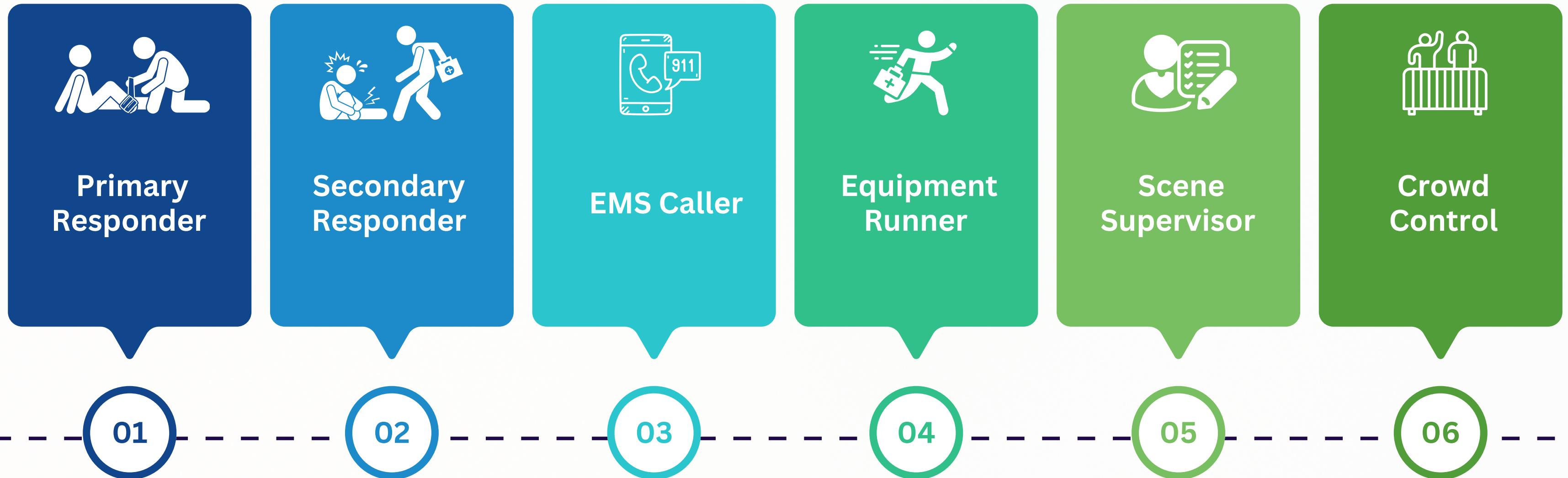
Resolve any logistical problems that arise during transportation.

Arrival



Confirm the safe delivery of goods at the final destination.

Response Roles:



Post-Incident Procedures

