

Addendum No.1

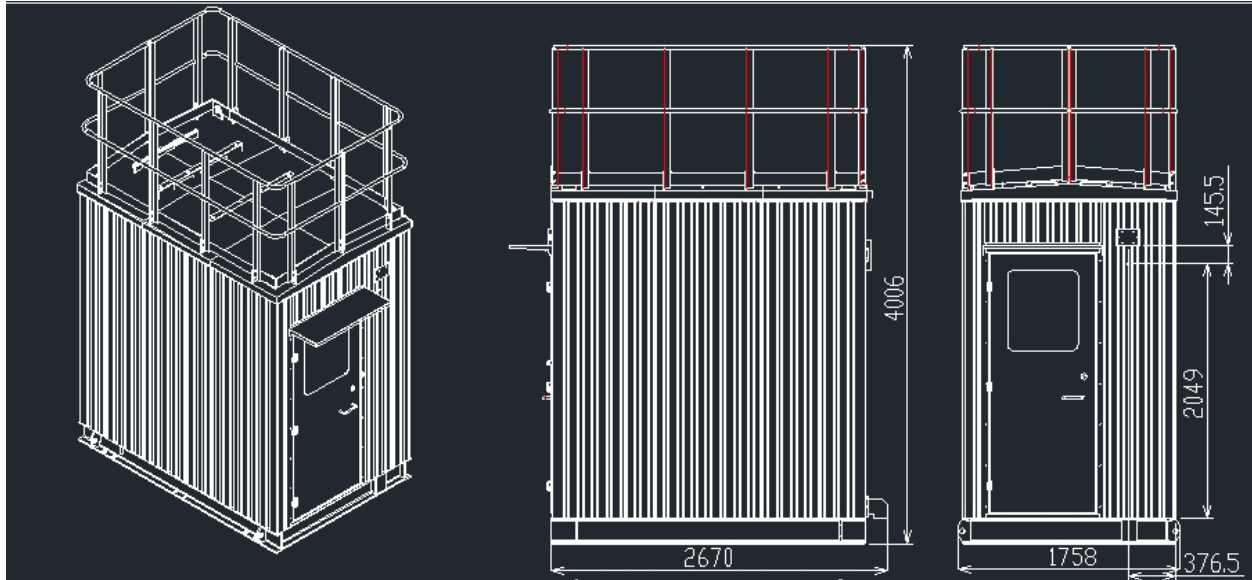
TraPac Oakland Hybrid Retrofit Project

Shipping time: late August 2024

Shipping materials:

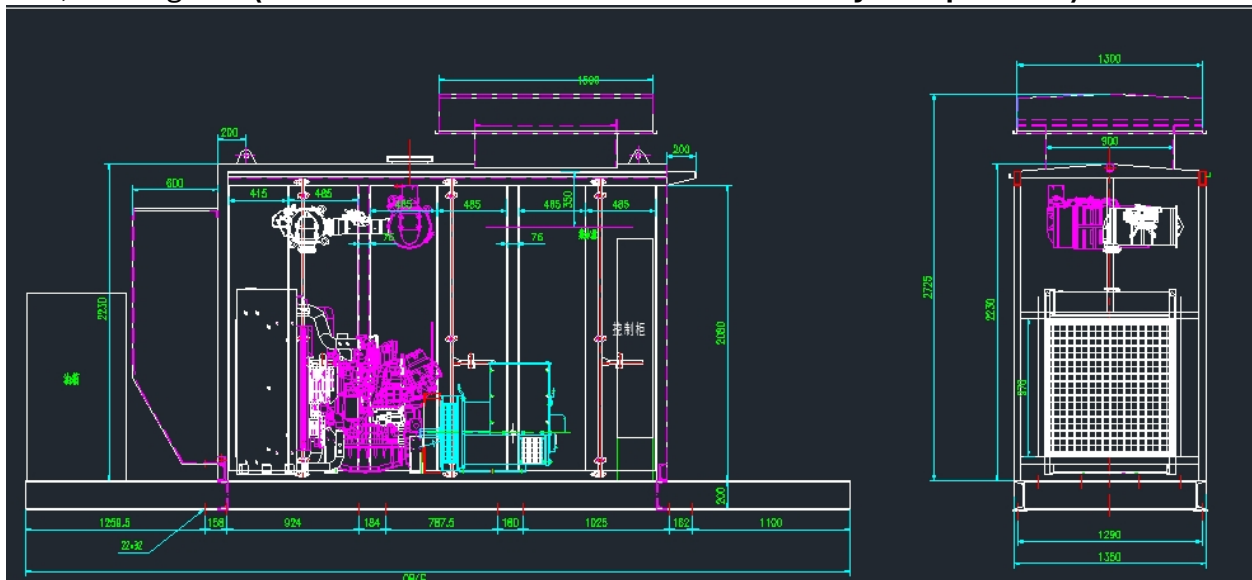
2700*1800*4100mm, 4500kg/each

3 sets of battery room system: Each piece has an approximate size of 2700*1800*4100mm, 4500kg/piece (excluding batteries, which will ship directly to site)



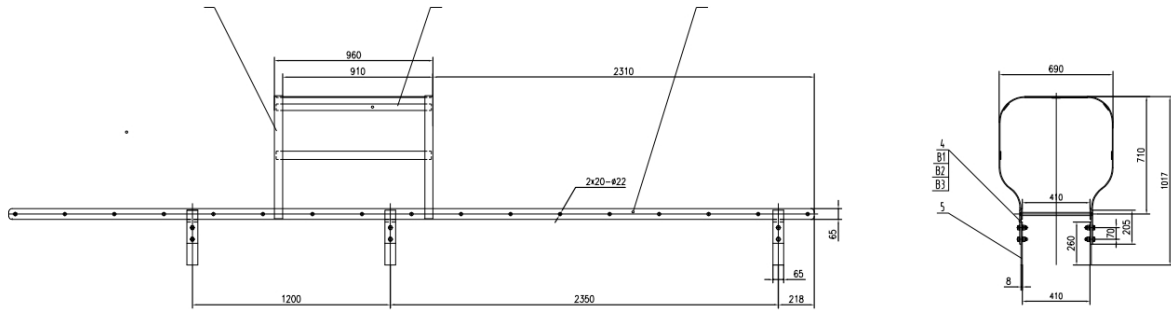
5780*2925*1400 mm , 3500 kg/each

3 diesel engine room systems: Approximate dimensions of each unit: 5780*2925*1400 mm, 3500 kg/unit **(This will be sent as a second time delivery in September)**



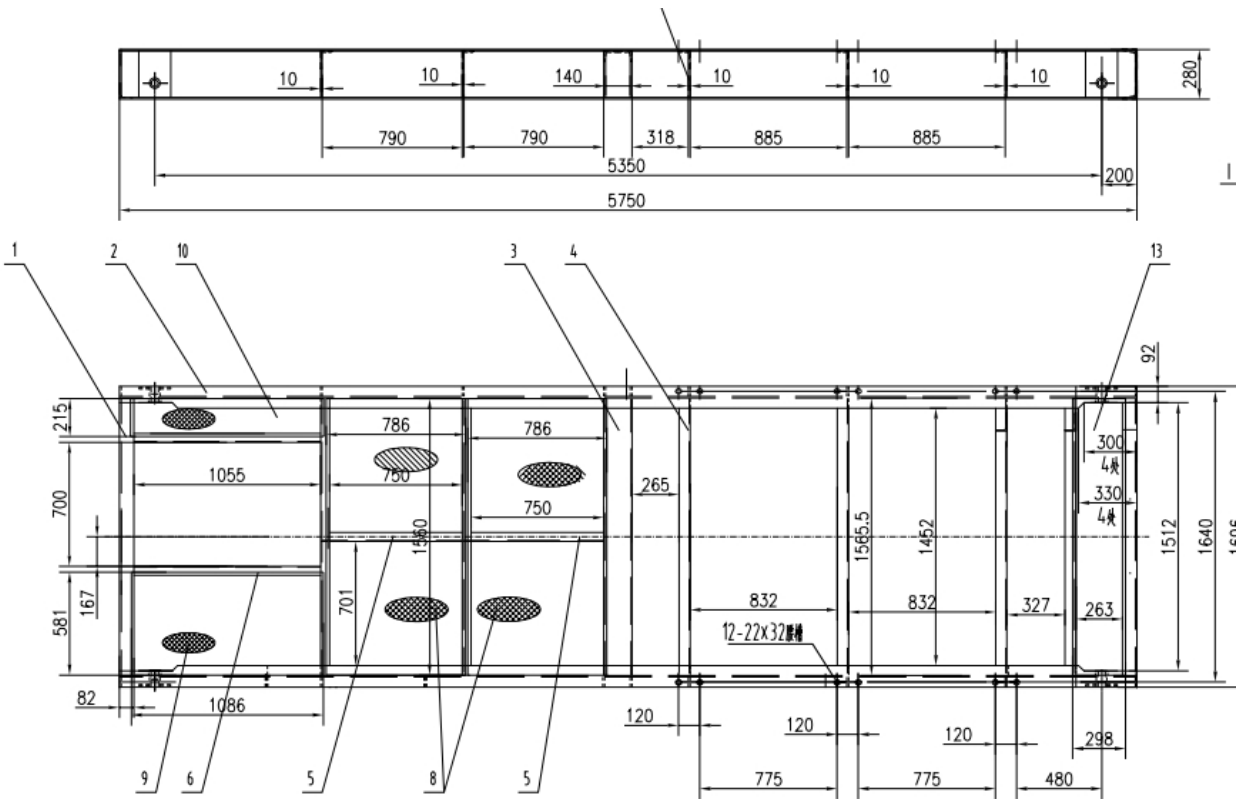
4880*700*1020mm, 100kg/each

3 vertical ladders + cage: Each piece has an approximate size of 4880*700*1020mm, 100kg/piece



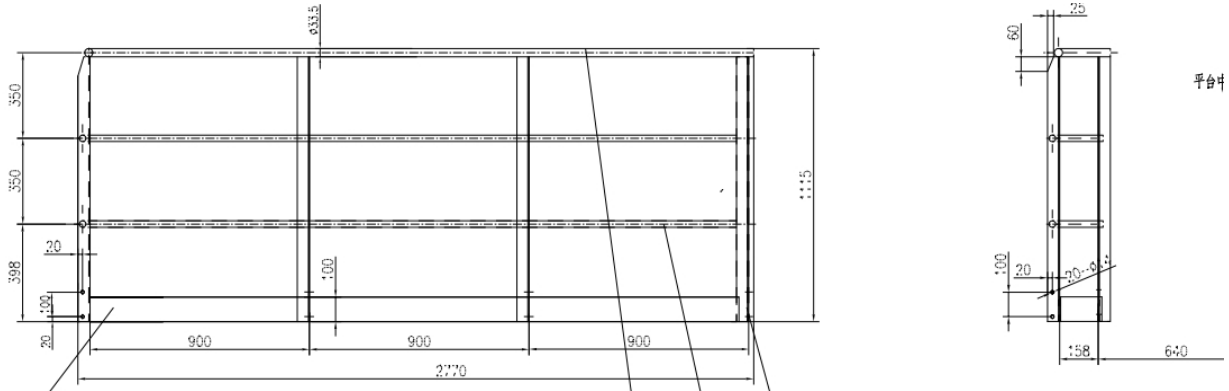
5850*696*350mm, 1,400KG/each

3 pieces of battery room platform structure: each piece has an approximate size of 5850*696*350mm, 1,400KG/piece



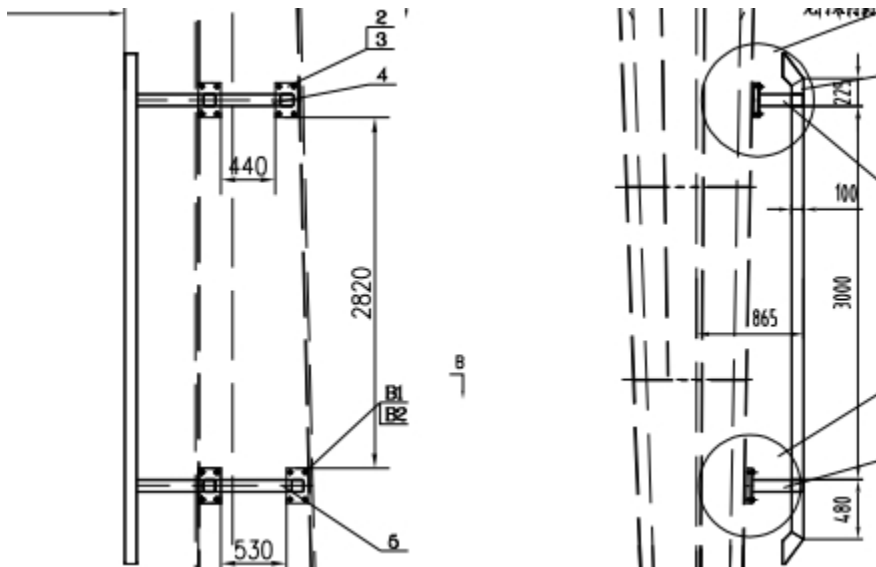
3000*1200*400mm, 80KG/each

6 platform railings: Each piece has an approximate size of 3000*1200*400mm, 80KG/piece



4104*1355*500mm, 200kg/each

6 pieces of anti-collision frames: Each piece has an approximate size of 4104*1355*500mm, 200kg/piece



Other Miscellaneous Items:

1.2m * 1.2m * 0.8m, 500kg /each, Other purchased materials, packed in wooden boxes, estimated standard wooden boxes (1.2*1.2*0.8 meters), about 500kg/box, about 5 boxes.