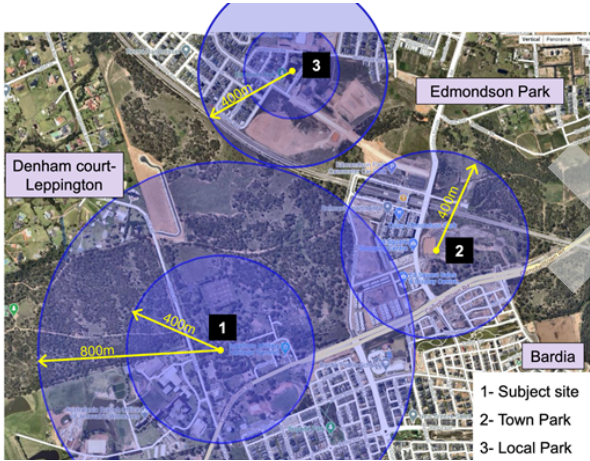


SPORT RESEARCH LIVERPOOL CITY COUNCIL

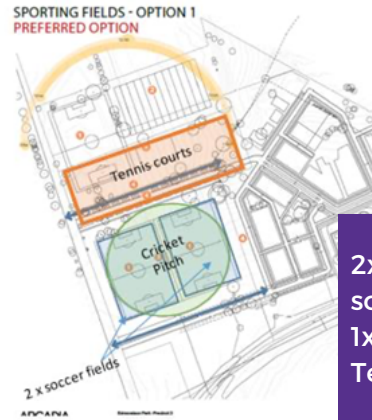
Liverpool City Council used SportsEye to validate a proposal by a developer to provide sports facilities as part of a residential development. Liverpool City Council were able to validate the demand for the proposed sports and associated facilities simply by logging into their account.



EDMONDSON PARK



PROPOSED RECREATION FACILITIES



2x international soccer fields
1x cricket pitch
Tennis courts

SPORTSEYE MODELING

Catchment	FOOTBALL		BASKETBALL	
	Prestons-Edmondson Park	Ingleburn-Denham Court	Prestons-Edmondson Park	Ingleburn-Denham Court
Gender participation	Male- 85.9% Female- 14.1%	Male- 78.9% Female- 21.1%	Male- 75.7% Female- 24.3%	Male- 66.7% Female- 33.3%
State Participation by sport	3.56%		0.69%	
Participation rate of the focus area	5.3%	0.47%	1.03%	0.2%
State Average conversion rate	26.29%		35.44%	
Demand conversion rate by sport	30.79%	1.3	37.63%	0.81%
Dominant age group	10-19 years 5-9 years	10-19 years 5-9 years 20-29 years	10-19 years 20-29 years 5-9 years	10-19 years 40-49 years

Focus area: Prestons - Edmondson Park and Ingleburn-Denham Court

Correspondence from Edmondson Park residents indicates an increased demand in **Basketball** participation

FOOTBALL IN LIVERPOOL (INGLEBURN AND PRESTONS)

