



Welcome to your Spring 2024 Poole Museum Foundation newsletter.

As you can appreciate, priority for the charity and the Poole Museum team is the redevelopment project and we apologise that due to a lack of resources, we have been unable to provide a programme of activities and events for 2024.

Thank you for your continued support for your local heritage maritime museum.

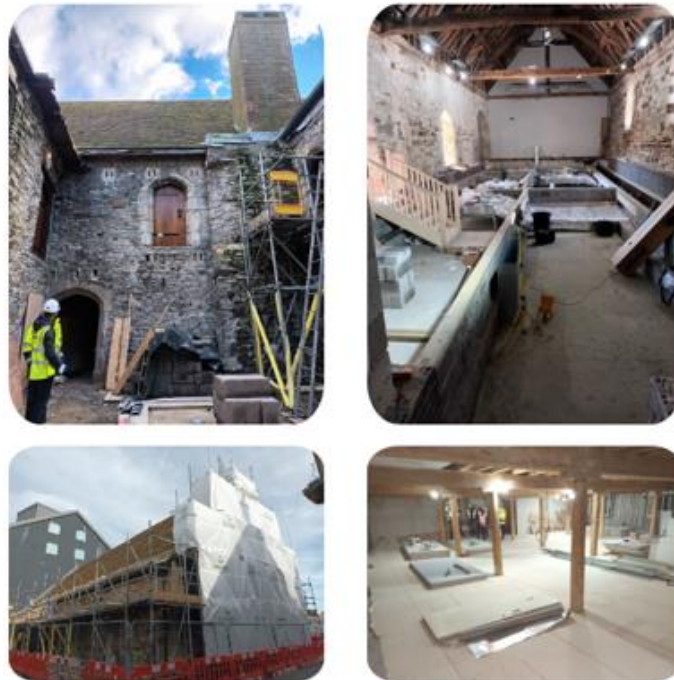
PHASE 2 REDEVELOPMENT PROGRESSING

Greendale Construction Group Limited continue to make progress with the Poole Museum redevelopment with the following work currently taking place:

- The rust removal, restoration and re-painting of the steel atrium at the front of the museum
- Restoration and repointing of all internal and external brickwork of the Grade 1 listed Wool Hall
- The construction of block work to house the environmental controls under the floor of the Wool Hall / Town Cellars, installation of pipework and new floor, making this area fully accessible from Oakley's Mill
- The demolition of the old lift shaft in Oakley's Mill that will be re-built to fit a brand new larger accessible lift
- Other gallery floors are being fitted out with floor bases, stud walls, electrical re-wiring, plumbing and heating along with ensuring all floors have level access
- The replacement of the wooden staircase in Scaplen's Court courtyard with an accessible platform lift and modern staircase
- The building of internal stud walls, re-wiring and plumbing within Scaplen's Court for the new public toilets and kitchen areas
- The preparations in Scaplen's Court garden for the new fire exit stairwell, accessible ramp and restoration of the rear external walls.

There is a fascinating 'behind the scenes' blog compiled by volunteers with a timelapse video of the works that have taken place: [Our Museum Journey \(poolemuseum.org.uk\)](http://poolemuseum.org.uk). The footage shows the conservation works, undertaken by Albion Stonemasons Ltd, which has involved the painstaking repointing of all elevations both inside and outside the Wool Hall / Town Cellars. The stonemasons have been raking out the cementitious mortar from much earlier repair works in the 1970s which has contributed to the decay of the stonework. In places stones have been replaced, along with structural repairs. The end result, is truly breath-taking - the quality of the work is exceptional.

The next steps will be the striking/removal of the scaffolding around the main museum buildings in time for the busy summer period for Poole, the removal of the bay window from front of Scaplen's Court and installation of specialist environmental controls for the 4th floor temporary art gallery space as well as much more!



Poole Museum Project Talks

If you have a community group that would be interested in booking a talk on the Poole Museum redevelopment project, please do contact me jennifer.fawcettgray@bcpcouncil.gov.uk and a member of the project team would be delighted to attend for a small donation for Poole Museum Foundation. The presentation includes historical photographs of the museum, the works taking place and an insight into the new galleries and features of your local heritage museum.

[photo from talk in April 2024 for Poole Old Town Community Group]

SHARE YOUR STORIES

**Poole Museum needs your help to tell the
story of life and work at Poole Foundry**



Poole Museum is looking for people with stories and memories of Poole Foundry. Perhaps you or a family member worked in the foundry, or you lived nearby and remember the billowing smokestack?

We want to collect these memories to support an exhibition at Lighthouse Poole that will showcase photographs documenting the final months of work at the Foundry, alongside objects and artwork from the museum's collection.



If you are interested in taking
part please contact
localhistory@bcpcouncil.gov.uk
01202 128888

Poole Museum can still provide research with the help of volunteers so do remember, if you have any local history enquiries, you can email localhistory@bcpcouncil.gov.uk or use some of the digital resources that are available via [Poole History Online](#), a website containing thousands of photographs and documents relating to the history of Poole, [Dorset History Centre \(Archives\)](#) - [Dorset Council](#) or Bournemouth Library History Zone: - [Heritage Zone \(bcpcouncil.gov.uk\)](#).

Don't forget - you can view Poole Museum artefacts online!

Virtual Collection

Search the database featuring over 250,000 collection items from Wessex Museums' partners. The database centralises records from Dorset Museum, Poole Museum, The Salisbury Museum, and Wiltshire Museum.



The database features over 250,000 collections items from Wessex Museum's Partners. The database centralises records from Dorset Museum, Poole Museum, The Salisbury Museum, and Wiltshire Museum. The database gives more access to the objects that are not on display in the museum galleries.
[Search the collections - Wessex Museums](#)

Using the same platform, we also have our own Poole specific collections website and this can be explored by clicking here: collections.poolemuseum.org.uk or via the link on the Poole Museum website.

What's On Across the Partnership:

DORSET MUSEUM & ART GALLERY

Wildlife Photographer of the Year 2024

19 July - 03 November

The world famous photography exhibition from the Natural History Museum. Over 100 powerful photographs capture fascinating animal behaviour, spectacular species, and the breath-taking beauty of our planet. The images shine a light on stories and species from around the world and show the impact of human activity on the planet, in ways that words cannot.

John Brown in Dorchester: Rebuilding a Life after slavery

03 February - 30 June

Discover the little-known story of John Brown, in this new showcase display outside the Collections Discovery Centre. Brown was born into slavery in Virginia, USA around 1811. Through resilience and determination, he escaped in 1845 by travelling via the Underground Railroad to Michigan, where slavery had been abolished. He moved to England, where he wrote a memoir, gave talks about his experiences, and built a new career, working as an herbalist. He spent several years in the southwest, living in Dorchester for 5 years.

WILTSHIRE MUSEUM

A Wiltshire Thatcher - a Photographic Journey through Victorian Wessex

06 April - 1st September

Through the exhibition, we will show how Ernest Farmer captured the spirit of people, villages and landscapes of Wiltshire and Dorset that were so much of a contrast to his life in London. It is fascinating to see how this theme of rural and urban contrasts was developed by Led Zeppelin and became the focus for this iconic album cover 70 years later.

STEAM - HOME OF THE GREAT WESTERN RAILWAY MUSEUM

GWR: What's your emergency?

25 May - 30 September

The first two instalments of our new exhibition series GWR: What's Your Emergency will be opening in May 2024. These consist of 'Fire, Fire!' and 'Stop Police!'. These exciting exhibitions will be focusing on the Fire and Police Service and their work with the railway and GWR

- Don't forget, you get **FREE** entry at Dorset Museum (Dorchester), Wiltshire Museum (Devizes), Salisbury Museum, new partners in Swindon, STEAM (<https://www.steam-museum.org.uk/>) and Lydiard (<http://www.lydiardpark.org.uk>) for membership card holders from all partner museums.
- Exclusion: Swindon Museum and Art Gallery as they are temporarily closed.

Find Out More