

# Members Newsletter



Dear Members,

It is starting to feel like Spring is here and as lockdown eases, we can start planning to visit our local museums and meet with family and friends.

We are pleased to announce that the Poole Museum shop has re-opened safely on Monday 12<sup>th</sup> April – don't forget your membership discount of 15% can be used in the shop. The museum staff and volunteers are working hard to get the museum ready to fully re-open to visitors in line with Government guidance from Monday 17<sup>th</sup> May and can't wait to start welcoming you back.

This also means that PMF can start to plan events for our members to come together later in 2021 and we are thrilled to offer an exclusive membership event in August – a 3-hour boat trip around Poole Harbour aboard the Dorset Queen with food, drink and a fascinating commentary from our cruise director and Trustee, Peter Burt, see pg. 3 for more details.

Our online PMF Spring Soiree event in March was a success and don't forget you can access this talk and others via your Member's Corner page on the PMF website:

<https://poolemuseumfoundation.org/m/login?r=%2Fmembers-corner>

It is easy to register access and please do contact me if I can help you with this at all or you have any suggestions for what you would like included on the page, within future newsletters or even write an article for me to include – I do love hearing from our members!

On pg. 2 and on your Member's Corner webpage, you will find details of our next online talk on May 5<sup>th</sup> and we really hope you will join us.

As always, thank you for your ongoing support and feel free to ring me on 01202 126208 or email [info@poolemuseumfoundation.co.uk](mailto:info@poolemuseumfoundation.co.uk) with any queries or just to say 'Hello'.

All the best -

**Jenny**

Fundraising and Membership Officer

Don't forget to follow us on social media:



## Wessex Museums FREE online talks:



**29 Apr, 7.30pm:**  
Wildflower SOS – be a Meadow Maker

**20 May, 7.30pm:**  
The Wonderful World of Bees

**9 Jun, 7.30pm:**  
Might the Mighty Osprey Return to Poole Harbour?

**23 Sep, 7.30pm:**  
Beaver Fever comes to Purbeck!

All these Wessex Museums events are free - all you have to do is book a place via the webpage: [www.wessexmuseums.org.uk/book-online/](http://www.wessexmuseums.org.uk/book-online/)

April 2021



### **Member's Spring Soiree event including Professor. Tim Darvill's 'Crocks of Gold' talk**

We hosted an interesting event in March with PMF members and it was lovely to see some of our members on the Zoom screen – **thank you** to all those that came along and to Tim for hosting!

Here are a few facts to entice you into finding out more about early pottery production around Poole Harbour and of course, come to see examples of this pottery on display in Poole Museum:

- There is evidence that Poole has been producing pottery since the Bronze Age
- It is likely that native potters in Poole supplied black-burnished ware to the Roman army
- Firing kilns have been located all around the area during mine excavations
- These same kilns may have been used for a specific salt evaporation process and the coarse end-product was exported across the world which leads nicely to...

## **Members online event – Wed 5<sup>th</sup> May @ 6.30pm 'Salt-making around Poole Harbour'**

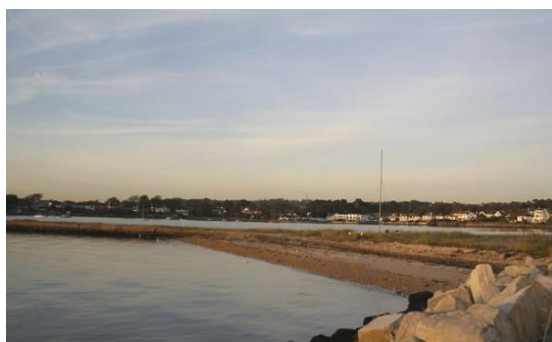
We should like to invite you to our next online event for our members, our May Soiree for a fascinating talk by Professor. Timothy Darvill OBE on Salt-making around Poole Harbour.

The event will be held on Zoom and I will email the details to remind you nearer the time:

Join Zoom Meeting

<https://zoom.us/j/91455235620?pwd=eGJaK1QzSnNkZnBxaklqUjltWnh6UT09>

Meeting ID: 914 5523 5620 Passcode: 552955



*Salterns Marina – site of a giant salt pan 1730 -1849*



**Tuesday 17<sup>th</sup> August 2021**  
**6pm – 9pm**

**Sunset Harbour History Cruise**  
**Aboard the Dorset Queen**

**£25 Members \* £35 Non-members**

**Join Poole Museum Foundation aboard the 1938 vintage motor yacht Dorset Queen for cocktails, BBQ and a guided tour of Poole Harbour**



**Tickets include: a glass of prosecco upon boarding; three hour guided cruise around Poole Harbour, Brownsea Castle, Millionaires Row, the Jurassic Coast and Swanage Bay; on-board BBQ; music and dancing; special guest cruise director Peter Burt**

**Space is limited to 50 guests. To book tickets, please email**

**Jenny at [info@poolemuseumfoundation.co.uk](mailto:info@poolemuseumfoundation.co.uk)**

**Dorset Queen is a former volunteer boat at the Dunkirk rescue missions and a proud member of The UK Historic Ships Register boasting a fully stocked on-board bar, soft drinks, Dorset Tea & barista style coffee.**



PMF are proud to be supporting the exciting plans to transform Poole Museum. The Our Museum Project Team are fast progressing into Delivery Stage thanks to the National Heritage Lottery Fund and Historic England but we continue to apply for fundraising and support that is essential for the project to be a successful legacy for our heritage maritime town.

The project will improve the visitor experience as well as revitalising the Lower High Street and Quayside, increasing visitors to the museum and Poole's vibrant Quay Quarter.

The building design plans, exhibition interpretation and potential programming have now been shared publicly and we encourage all our members to **Join our Journey** by reviewing the exciting design plans that can be viewed here, along with a short Engagement HQ survey to discover how you wish to engage or use the new museum and results will be used in future programming plans for Poole Museum: <https://haveyoursay.bcpccouncil.gov.uk/poole-museum>



Coming soon to Poole Museum - from **Saturday 22 May to Sunday 4 July 2021** a new exhibition explores animation in a new interactive exhibition by the National Centre for Computer Animation (NCCA). This fun-packed, interactive exhibition showcases a selection of original concept art, storyboards, stills, games and finished films in galleries 1 and 2.

*Once Upon a Time in Animation* features a wealth of creative talent from students, graduates and researchers from Bournemouth University. The objects and artwork on display are from the archives of the NCCA, which include staff and student work as well as industry donations. The exhibition explores different areas of animation, from film to game design, and shows how an initial idea develops into a finished moving image. Visitors can engage with Covid secure exhibits including a display of student-created games, moving images and a cinema area.

The exhibition has been generously supported by Arts Council England and the National Lottery Project Grants through Bournemouth University.

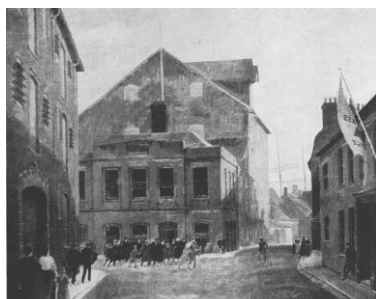


## Changing Faces of Poole Museum

There have been buildings on the museum site since medieval times, foundations of the Town Cellars, also known as the Wool Hall, date from 1300, the hall being used to store “*commodities of the staple*” and large stocks of wool for shipping.

During the 18<sup>th</sup> Century, Poole was one of the busiest ports in Europe. Oakley's Mill produced flour here from the 19<sup>th</sup> Century up until the 1960's. When the machinery for the giant milling wheel was installed in the 1800's ship masts and timbers were used as extra supports. A warehouse of one type or other has stood on Poole's Paradise Street for more than 200 years.

Other buildings on the site have included a medieval public house, the Ship Inn. Two of the hammer beams with carved heads, that used to decorate its roof, survive in the museum. Poole's first public library founded in 1830 stood here. It has also been Airways House between 1939-48, part of the operational HQ for B.O.A.C. whose flying boats left Poole from the harbour. The building had restoration work during the late 70's and 80's. A museum has been on the site since 1989 and the layout of the museum that you see today is from the last transformation in 2007 when the glass atrium was built on the west-facing entrance.



## APRIL MEMBERSHIP OFFER

Help us spread the word to friends and family or why not by a membership as a gift?

New annual membership subscriptions are frozen at just **£15.00** for an individual or we have a **special offer** of **£20.00** for a couple/family at the same address.

Corporate Memberships are currently just £200 - call me to find out more!



All our memberships come with the following great benefits:

Membership Rewards Card - Private Exhibition Views - 15% off purchases in the Museum gift shop -

10% off purchases in the Museum café – Regular newsletters - Members-only social events -

Free entry to Dorset County and Wiltshire Museums - Half-price entry to Salisbury Museum

[www.dorsetcountymuseum.org](http://www.dorsetcountymuseum.org)

[www.wiltshiremuseum.org.uk](http://www.wiltshiremuseum.org.uk)

[www.salisburymuseum.org.uk](http://www.salisburymuseum.org.uk)

\*\*\*\* ALL MUSEUMS AIMING TO OPEN FROM MONDAY 17<sup>TH</sup> MAY 2021 \*\*\*\*



Supporting community projects in the local area, the Lottery operates on the principle of raising money within the community for the community. A ticket for BH Coastal Lottery costs £1 per week!

<https://www.bhcoastalottery.co.uk/support/poole-museum-foundation>

### Board of Trustees

Felicity Irwin DL (chair)  
Peter Burt  
John Butterworth  
Prof. Timothy Darvill OBE  
Peter Dobson  
Prof. Emma Hunt  
Simon Jenner