



Dear Members

There has been much going on with the exciting project to renovate the Museum and to create the Quay Quarter embracing Scaplen's Court, as you all know. As with all older buildings there have been a number of items and activities that have proved rather more difficult than expected as work begins but it seems that the Museum will now close at end of December when the project will fully commence.

The Foundation has been working very closely with Alison Smith and the Project Team and we have participated in raising some £600,000 to date, in pledges from various Charitable Trusts which is tremendous, and the work continues to complement the support and funding from the National Lottery Heritage Fund and Historic England, as well as BCP Council, which makes everything possible.

The Museum is due to reopen late summer of 2024 and meanwhile we have planned a number of events so that we may share progress with you and continue to meet together to learn and share facts of local interest and related to the Museum. As the Project develops there will be the opportunity to see first-hand the refurbishment activity in 'hard hat' visits which we shall offer when it becomes appropriate.

Exciting times, and I hope you will begin this journey by joining us in Scaplen's Court for the very last event there until 2024 and celebrate the beginning of the Christmas season. Details follow and I look forward to seeing you there!

All good wishes –

Felicity

Felicity Irwin DL - Chairman PMF

COFFEE BREAK DROP-IN'S – We will continue to have our member's meet-ups in cafes within a short walk of the museum. Everyone is welcome and it would be lovely to see you there and share museum news with you:

- **Friday 11th November 2022 11.00am – 12.30pm**
- **Wednesday 4th January 2.00pm – 3.30pm**

All the best -

Jenny

Tel. 01202 126208 / info@poolemuseumfoundation.co.uk



Dorset Museum Exhibitions

Highlights Tours

Explore & learn more of the museum collection with a volunteer-led tour during the day on 8th Nov, 15th Nov & 22nd Nov.

03 Dec – 26 Feb 2023 I Grew Up 80s

Take a trip back in time with the nostalgia-filled exhibition and special *ArtyFacts* days for getting creative.



22 Nov – 18 Feb 2023 Oexmann Art Award

Exhibition of artworks taking part in local art competition.



08 Oct – 31 Dec 2022

Andrew Lucas: The Timeless City – Salisbury Through Watercolour exhibition

Find out more on each museum's website.



**MEMBERS FESTIVE GATHERING
THURSDAY 8TH DECEMBER
6.00PM - 7.30PM
SCAPLEN'S COURT, POOLE**

Join us for the last event to be held in our protected Grade I listed heritage building, Scaplen's Court (Sarum Street, Poole) for hot mulled wine, delicious mince pies and an opportunity to hear about recent discoveries in the museum stores from our curator team.



There will also be a performance of festive songs by the wonderful Citrus Singers, providing some seasonal songs that we can all join in with!

This event is FREE (donations of £10 on the night) and numbers are limited and expected to be popular, so please RSVP by Friday 1st December by telephoning Jenny on 01202 126208 or by emailing info@poolemuseumfoundation.co.uk

Coming soon - 2023 Members Events

January



Join us for a free online talk on **Wednesday 18th January 7.00pm**, from the comfort of your homes, to hear a talk by our very own Trustee, Professor Timothy Darvill OBE as he shares his experiences in his **'Day in the life of an Archaeologist'** talk for members.

A reminder and link will be sent out by email in the new year.

February

Michael Spender (Head of Culture) will be giving an evening presentation on **Tuesday 21st February 5.00pm**, at a venue in Poole (to be confirmed), titled **"Another look Augustus John: Poole's leading Artist"** with an opportunity to see some of the artist's beautiful works on the big screen.



Birds of Poole Harbour Osprey Project

Further to our boat trip in May hosted by Birds of Poole Harbour, I thought you may like an update on the Osprey Project that we learnt all about on the trip.

Osprey adults "O22" and "CJ7" bred two chicks, the first successful breeding programme in nearly 200 years and these chicks were ringed as "5H1" and "5H2". The chicks could be watched getting bigger and stronger on the live webcams but sadly, just as they were starting to fledge, "5H2" was attacked by a local Goshawk and the Osprey chick did not survive. The other young bird and adults will now have migrated, typically travelling 4000km to West Africa and we look forward to seeing which birds return in 2023.

You can follow their progress on Birds of Poole Harbour Twitter, Facebook or webpage:

[The Poole Harbour Osprey Project - Birds of Poole Harbour](#)

Our Museum Project News

Salix – Carbon Reduction Project

Scaffolding will remain around Poole Museum until early January while extensive roof works take place on the Wool Hall and Oakley's Mill. All the roof tiles are being stripped, membrane and battens replaced and fully re-tiled using the reclaimed tiles. Specialist solar panels, in the form of slate tiles, will also be installed on the roof of Oakley's Mill.

A new dormer extension has been built on top of Oakley's Mill to accommodate the new larger, accessible lift for the main museum.

All the building's external wooden shutters are being repaired and repainted before being put back with new ironmongery – there are over 60 pairs of shutters to restore! Internally, window frames and bars have been completed and are awaiting the bespoke aluminium framed windows that will be fitted throughout the building.

It will certainly ensure that our heritage building looks loved and cared for within Poole's Quay Quarter and is more energy efficient for the future.



KEY DATES FOR POOLE MUSEUM

Sunday 30th October 2022 – Museum Café and Scaplen's Court closes

Monday 31st October 2022 – Museum Winter opening hours commence as Mon – Sat 10.00am – 4.00pm with Sunday's 12.00pm – 4.00pm. The museum cafés will be closed.

Saturday 19th November – 2nd January 2023 – Poole's Christmas Maritime Light Festival

<https://www.poole-christmas-maritime-light-festival.co.uk/the-trail>

Thursday 8th December – PMF Members Festive Event (Scaplen's Court)

Saturday 24th December 2.00pm – Tuesday 27th December 2022 – Museum closed

Saturday 31st December 2022 – Galleries at the museum close to the public

HISTORY OF SCAPLEN'S COURT

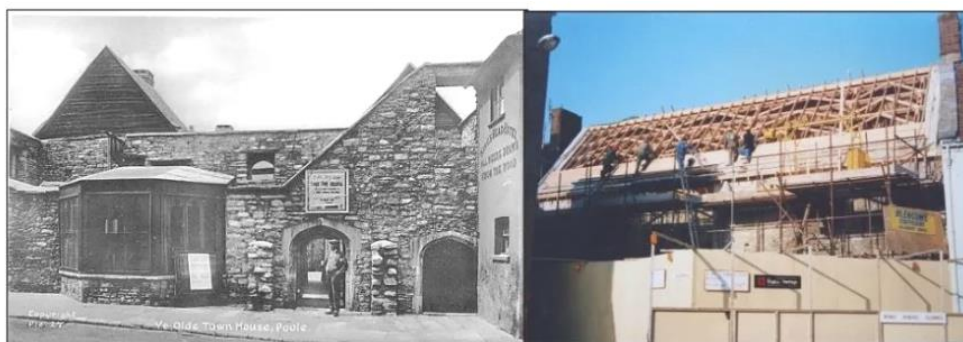
Scaplen's Court dates from late 15th or 16th century and is thought to be on the site of an L-shaped medieval quayside merchant's house and was extended early in the Tudor period into the quadrangle shape with new doorways, fireplaces and ceilings, many of which still survive today. By the 17th century, the Purbeck and Bath stone building housed an alehouse, the George Inn, having 'two stables, gardens, outhouses, cellars, courts, edifices and buildings'.

Over one of the doorways in the quadrangle courtyard in the middle of the building is a stone with the shield-of-arms of Poole with the initials WP 1554 and a later date of 1729. The ground floor kitchen has a late 15th century fireplace and smaller rooms that may have been divided into a buttery and a pantry.

In the 1640's, Scaplen's Court was occupied by the Parliamentarian Roundheads during the English Civil War against Charles I. It is believed that some of these soldiers left their mark on the building by graffitiiing the stonework around the fireplace upstairs with their initials!

By the mid-18th century, the building was divided into three tenements in, involving the conversion of the roof space into attic rooms and the remaining beam holes can still be seen today. One of the residents was John Scaplen, a joiner and cabinet maker and whose name is associated with the building today! The property was still owned by the Skutt family and had been updated with red brick, sash windows, smaller fireplaces and Georgian wooden panelled doors and surrounds.

Sadly, by the time of Queen Victoria, the house was forgotten and had declined to poor tenements. The house was badly damaged by a storm in 1923. The year after, local historian H.P. Smith was given access to the building and discovered the original building: '*When the partitions which had divided one room from another had been removed...we found ourselves in a hall forty feet long and twenty four feet wide...and when we had removed a brick chimney piece we found ourselves looking at a fairly well preserved Gothic doorway, seven feet high and 3 feet six inches wide*'.



— Scaplen's Court before and during the rebuilding

In 1927, the Society of Poole Men spent £430 on renovating the property but by 1931, the Poole Corporation took over the building. Most of the building remained closed to the public until the 1960's when Poole Council now owned the building, but it took until museum curator, Graham Smith, proposed a complete renovation in 1985 that it had a full restoration and was opened for educational visits.

The beautiful walled garden at the rear was originally designed by George Dillstone in 1930 and was restored by volunteers in 2000 with beautiful seasonal planting and a central sundial and remains well looked after by the museum's wonderful volunteers still today!

Dorset Architectural Heritage Week

What's behind the hoarding?

Poole Museum has been hidden behind scaffolding since the start of the summer. We loved bringing 63 people behind the scenes as part of to see the exciting work that's been going on to care for and future proof some of Poole's most interesting buildings. This year visitors were able to see conservation work up close, get behind the scenes and were able to hear from a range of experts. Our Architect, Curator, History Centre Manager, Construction Director, Stonemason, Project Manager and Project Officer were all on hand to share plans.

There will be lots of future opportunities to don a hard hat and high vis and come behind the scenes with the team – watch this space for more information!



We have two outstanding universities on our doorstep, and students have been applying their learning to real life situation as researchers, designers, animators, and more! Arts University Bournemouth modelmaking students are currently creating replicas of museum objects and amazing handling models to take out 'on the road' when the museum is closed from next year.

Recreation of a merman in the museum collection from the Swash Channel Wreck "whilst studying the piece for the sculpting phase I noticed some very interesting things: like some poor cuts [...] or a knot in the wood that left a hole in the figure [...] showing that, even though the merman is meant to give the ship a bit of magnificence, it is still just a merchant ship, and was built on a budget. They could not afford a better piece to sculpt the merman on, and they could not have a very refined finish, and I've tried to capture that, whilst still trying to keep the magnificence it for sure had." (Joan Serra)

Sam Arthur with a life-size model cod skeleton. "Cod are an integral part of Poole's history. Much of Poole's success and ability to develop originated from foundations built in the Georgian Atlantic Cod trade around Newfoundland. But Poole's relationship with cod extends far beyond that. Medieval sites throughout Poole show cod was an important source of food, and while they could have been caught locally, particular bones and butchery marks indicate a thriving salt cod trade even in the medieval period." (Gary Edwards, Curator)

SHARE A PMF MEMBERSHIP WITH OTHERS

Trying to think of a thoughtful gift for family or friends? Why not buy them a year's membership subscription to join our Poole Museum community for a special festive price of £20.00 for a couple/family at the same address.

Poole Museum Foundation Membership Offer



Annual subscription prices:

- Individual = **£15.00**
- Couple/Family (at same address) = **£20.00**
- Christmas Gift membership packs can be sent via the giver including a Christmas card and keyring



All our memberships include the following benefits:

- 15% off purchases in Poole Museum gift shop
- Private Exhibition Views, Social Events & Newsletters
- FREE entry to Dorset Museum (Dorchester) and Wiltshire Museum (Devizes)
- HALF PRICE entry to Salisbury Museum

Visit our webpage or purchase membership at Poole Museum

www.poolemuseumfoundation.org/join-and-support



Supporting community projects in the local area, a ticket for BH Coastal Lottery costs £1 per week!

<https://www.bhcoastallottery.co.uk/support/poole-museum-foundation>

Board of Trustees

Felicity Irwin DL (chair)
Peter Burt
Prof. Timothy Darvill OBE
Peter Dobson
Dr. Joanna Kennedy OBE
Prof. Paul Gough
John Butterworth
Simon Jenner