



Dear Members,

A belated Happy New Year to you all., however, it's not late if I was to wish you all Happy Chinese New Year 新年快乐 as year of the Ox begins!

May I start by introducing myself, I am Jenny Fawcett-Gray and I am covering Christine's role as Fundraising & Membership Officer while she is on maternity leave, I am sure you will all join me in congratulating her. My background is in local government work including tourism and the charity sector and until recently, I worked on Brownsea Island for The National Trust. I am very much looking forward to working with Poole Museum Foundation and engaging with you all.

2021 has not started as we would have hoped with Poole Museum remaining closed due to the on-going pandemic, but behind the scenes, everyone is working hard on preparing for a re-opening soon this year and work continues with the exciting NLHF project "Our Museum: Rediscovering Poole's Maritime Heritage".

Therefore, sadly, this means our calendar of social events for 2021 is currently on hold - please look out for more information in a future newsletter or on our website [www.poolemuseumfoundation.org](http://www.poolemuseumfoundation.org) for updates on when museums may re-open to the public.

There are some fascinating e-videos available on the **PMF Members Page** via our website for exclusive material from our guest speakers and we hope to also hold a ' **PMF Social Soiree** ' via a special Zoom meeting for you all in March...more details will follow soon.

As always, thank you for your ongoing support and feel free to ring me on 01202 126208 or email [info@poolemuseumfoundation.co.uk](mailto:info@poolemuseumfoundation.co.uk) with any questions or requests for future newsletters.

# Members Newsletter

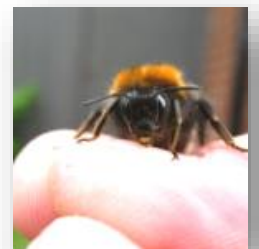


## Wessex Museums free online talks:

**15 February, 6.30pm:**  
*Making Wildlife  
Conservation Cool*

**4 March, 7.30pm:**  
Great Bustards –  
Flying on the Edge  
of Extinction

**20 May, 7.30pm:**  
The Wonderful World  
of Bees



**9 June, 7.30pm:**  
Might the Mighty  
Osprey Return to  
Poole Harbour?

All these Wessex Museums events are free - all you have to do is book a place via the webpage: [www.wessexmuseums.org.uk/book-online/](http://www.wessexmuseums.org.uk/book-online/)

## Writer in Residence "Talking Heads" project (Rachel Martin)

We have been lucky enough to be working with a Writer in Residence who is developing ideas for digital interventions within the museum in the form of "talking heads". Adrian Harris is a scriptwriter and an actor and between lockdowns has immersed himself in the museum buildings and stories that interest him. Through community workshops with participants from Adult Learning and through our library partners as well as a school group, Adrian has been inspired by what sparks people's curiosity. The latest development of the residency involves a partnership with the acclaimed National Centre for Computer Animation (NCCA). Students will work on a live brief to create a 3D animation of the carved head on the rudder of the Swash Channel wreck to engage with visitors in particular family groups. Adrian has written the script for the rudder head which will speak directly to visitors.

We are delighted to be working with the students on this live project which gives them the opportunity to work on a live brief, completing a single completed project to a high standard for a 'real' client. We hope to build and grow this partnership with NCCA with collaborative working and mutual benefit as our key principles. We look forward to seeing the amazing output and the creativity of the talented students. Watch this space!

Read more about our Writer in Residence on his blog -

<http://www.artfulscribe.co.uk/blog-category/poole-museums-writer-in-residence>

### The Swash Channel Wreck Adrian Harris Poem

He looks to me like a giant Totem,  
The wooden man from the ship that was broken.  
Carved from a great tree atop a ship's deck,  
Until claimed by the sea in a shipwreck.  
I like to say a prayer to this Totem  
And listen to hear his words of wisdom.  
Then rush up the stairs so that I can share,  
Nose to nose, where I whisper another prayer.  
He told me he lay on the seabed for ages,  
Dreaming in silt staring up at the waves.  
He was strong and proud, but never was loud,  
Eyes fixed silently where waves touch the clouds.  
Now the visitors all gaze up at him.  
I say another quick prayer and I grin.  
He looks to me like a giant Totem,  
The wooden man from the ship that was broken





## Our Museum Project Update – January 2021 (Alison Smith)

The 'Development Phase' of Poole Museum's National Lottery Heritage Funded project, *Our Museum: Rediscovering Poole's Maritime Heritage*, continues on schedule! There is a lot of work being done behind the scenes by the museum Project Team who were joined by the Design Team at the end of last year. The contract for architecture and exhibition design was awarded to ZMMA, who are joined by structural engineers The Morton Partnership and MEP Engineers Max Fordham. The first stage of the design work has nearly been completed and there will be an opportunity to learn more and feedback on the exciting plans for the museum at the end of March. We will ensure our enthusiastic PMF members are contacted with the details of how to take part and join our journey.

**DATE FOR YOUR DIARIES - Friday 26<sup>th</sup> March p.m.:** there will be an opportunity to review the exciting design plans for the museum during this public engagement event and we encourage our enthusiastic PMF members attend the Zoom meeting and find out more.

### Poole Museum Memories

In recognition of February being LGBT+ History month, we share a memory from Poole Museums from 2019 when one of the star artefacts, the Iron Age log boat was lit up in stunning rainbow colours for the Light up Poole 2019 festival.

The theme for this year's LGBT+ month is Body, Mind, Spirit and at Poole Museum, visitors are encouraged to engage in this way, by taking part in our whether it be watching one of our online video talks or creating a piece of art or craft after being inspired by something from our museum collection, activities that help us all be mindful and relax during the winter days:

<http://www.poolemuseum.org.uk/museum-from-home/community/creative-wellbeing/>



## Poole Quay Quarter Walk (Jenny F-G)

Despite the current situation, there is still much to discover about our local history, not far from our doorsteps, whether it be taking a local heritage walk for your daily exercise, researching local history or maps on the internet or catching up on those historical books waiting on the shelf. Recently, I set out for a sunny winter walk for my daily exercise to ignite that fuse of curiosity.

I took the Harbourside Walk route from Baiter Park (BH15 1TQ) along The Quay, past Anthony Caro's *Sea Music* sculpture, turning right into Thames Street to St. James Church, looping back via Market Street and High Street (currently closed to traffic) passing by Poole Museum & Scaplen's Court before returning along Quayside and what a delightful stroll.

Being a quieter time, I could really appreciate the tall quayside merchant buildings as though time had stood still, history preserved in the names of the streets and hidden alleyways, admire the beautiful Georgian mansion houses in St. James Close, while spotting decorative brass door knockers or well-worn iron boot scrapers in Church Street. So much historical evidence just waiting to be discovered and my list included:

- The red brick engraving commemorating the opening year of the lifeboat station
- A beautiful Carters tiles display located where the pottery factory once stood
- The site of Poole's first Alms-houses, '*devoted to the use of the poor for 500 years*'
- The commemorative blue plaque for BOAC HQ & Poole Flying Boats



An enlightening wander if Poole Quay Quarter is within your local reach but if not, do ensure it is on your list of things to do later this year, along with coming to see us at Poole Museum.



**Poole Museum is close to reaching a membership milestone.  
To help celebrate, we will be giving a cream tea and prosecco for two,  
to our 100<sup>th</sup> member(s) who join our Poole Museum Foundation!**

Help us spread the word to friends and family. Individual memberships are just £15 and couple's memberships are £25 and include all the perks listed below...



- ◆ Private Exhibition Views
- ◆ 15% off purchases in the Museum gift shop
- ◆ 10% off purchases in the Museum café
- ◆ Members-only social events
- ◆ Free entry to Dorset County and Wiltshire Museums
- ◆ Half-price entry to Salisbury Museum
- ◆ Email newsletters
- ◆ Membership Rewards Card

[www.poolemuseum.org.uk](http://www.poolemuseum.org.uk)

[www.dorsetcountymuseum.org](http://www.dorsetcountymuseum.org)

[www.wiltshiremuseum.org.uk](http://www.wiltshiremuseum.org.uk)

[www.salisburymuseum.org.uk](http://www.salisburymuseum.org.uk)



**“The great use of life is to spend it for something that will outlast it.”**

**—William James**

Big or small, every gift in a Will we receive helps to support our mission to preserve, protect and share Poole's amazing heritage.

For more information on how you can leave the gift of a lifetime, please contact us by telephone at 01202 126 208 or email

[info@poolemuseumfoundation.co.uk](mailto:info@poolemuseumfoundation.co.uk)

**Board of Trustees**

Felicity Irwin DL (chair)  
Peter Burt  
John Butterworth  
Prof. Timothy Darvill OBE  
Peter Dobson  
Prof. Emma Hunt  
Simon Jenner