

RISE

MONTHLY JOURNAL FROM JAPAN



LETTER FROM EDITORS DESK

Dear Reader,

Ohayo Gozaimasu!!

While in Japan, Autumn is coming to end and winter is slowly catching up. It is a pleasant sight to see most of the historic sites and parks are still covered with colourful maple leaves.

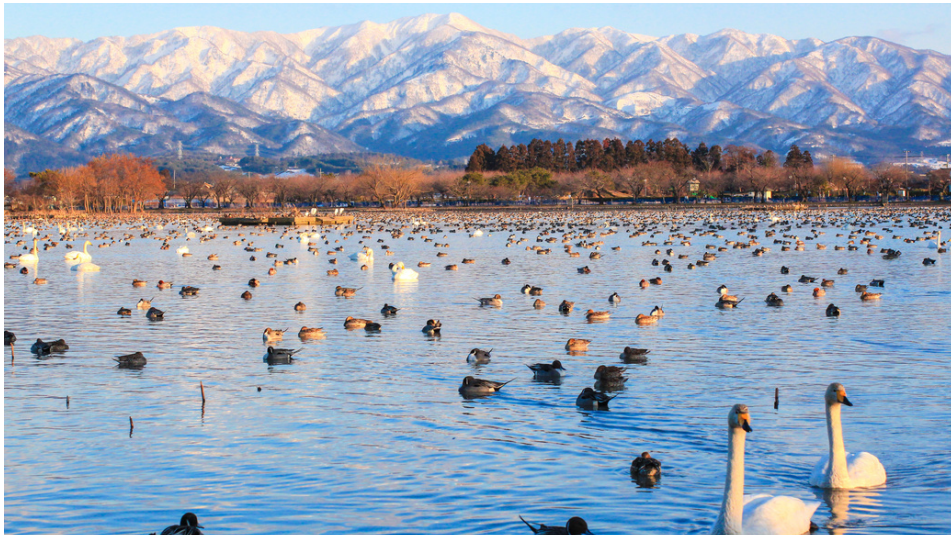
As Japan, opened up for tourist from 11th Oct, this year after a gap of two years, Christmas market are back. Streets in Tokyo are illuminated, Christmas tree installations have uplifted the festive spirits. The illumination and Christmas markets will be operational till 25 Dec.

This year hotels are witnessing sold out situation during Christmas weekend in big cities like Tokyo, Osaka and Kyoto.

And it is anticipated that coming Cherry Blossom season, shall be one of the best in terms of tourist arrivals. As the world awaited to witness in person magical blossom phenomenon.

Soon, holiday season will ring in the festive bells with Christmas and New Year. It is one of the best times to be in Japan, with alleyways lit up, stores decorated in Christmas theme, and people in joy. Team at RISE wishes its readers a Merry Christmas and Joyful New Year!!

Arigato Gozaimasu!



VISIT NIIGATA'S LAKE HYOKO THIS WINTER

BY SONIA SINGH

Lake Hyoko is a 281-hectare reservoir area in Agano City and is located 18 kilometres from Niigata City. Lake Hyoko is a well-known place throughout Japan as a swan migration ground. The letter "O" in the word is pronounced long, and "lake" is "ko" at the end of the Japanese word, so it is read as "Hyôko" in Japanese.

Lake Hyoko was created as an agricultural reservoir in 1639. It was designated a national natural treasure as the landing place for swans in 1954, after the late Shigezaburo Yoshikawa succeeded in feeding the wild swans for the first time in Japan. This marsh area has also been registered under the Ramsar Convention since October 30, 2008.

The lake is noted for its abundant and diverse bird life and is an important overwintering ground for whooper swans, tundra swans, northern pintails, common pochards, eastern spot-billed ducks, and many more. Every year, the first swans arrive from Siberia and Russia

in early October and stay until late March. About 5000 to 6000 swans migrate here during the peak migration season in late November.

So there are many ways in which you can enjoy the glimpse of swans flocking at Lake Hyoko.

The best time to catch a view of swans is actually around sunrise. The sight of swans flying away with the five-headed mountain range dyed in the morning sun is very beautiful. During the winter, you can see swans take off from the white, snow-covered land.

Catch Mr. Swan: During the season, the swans are fed three times a day at 0900 hrs, 1100 hrs, and 1500 hrs every day, and the person who feeds swans is referred to as "Mr. Swan." The swans are fed strictly selected bread crusts and rice after the food thoroughly dries under the sun. The sight of flocks of ducks and swans gathering at the voice of "Hey Koi" cannot be missed.

There is a swan observation huts, which are ideal for those who get too cold outside. It is a great place to watch the swans and other water birds while staying warm. You can take a break or buy souvenirs or soft serve ice cream there.

The swans can also be fed by purchasing food from the swan observation hut. When you toss the feed in, the water birds instantly react and come charging your way. It is advised to make sure to throw the feed toward the lake. The wind can get strong here, so the feed may blow away if you aren't careful.

During the cherry blossom season, more than 200 cherry blossom trees surround Lake Hyoko. Over 500 000 flowers, including irises and lotuses, bloom around the lake in early summer. The lake also has a museum called Hakucho no Sato, which focuses on swans and their history at Lake Hyoko.



OSAKA MINT MUSEUM, CHERRY BLOSSOM VIEWING SPOT

BY SONIA SINGH

For anyone who is interested in knowing how physical money is actually created, the Osaka Mint Bureau, or Zheikyoku, as it is called, is a popular place to be. The Osaka Mint Bureau is the head office of the Japan Mint, a government organisation that is responsible for the supply of coins and medals. Their work also involves the analysis, testing, and certification of medals.

This place also houses a museum called the Osaka Mint Museum, which is a western-style brick building existing since the Meiji Era on the premises of the Japan Mint. Originally, this building was constructed as a thermal power plant in 1911, but in 1969, the building was converted into the Mint Museum. The façade of the building has been left in its original state in order to preserve this historical building, and through this facility, the general public gets to know about the activities of the Japan Mint.

The Mint Museum has about 4,000 historical exhibits. One can read valuable documents related to minting, learn the history of coins, and get to know about the close relationship between society and coins, including how the Japanese coins evolved through time.

The Mint Museum is open to the public throughout the year. The Sakura walk-through, which is part of this area, was built in 1871. In 1883, the then Mint Master decided to open the Sakura walk-through to the public to share the beauty of the cherry blossoms. During cherry blossom season, this museum becomes very crowded as it houses over 300 cherry trees that are part of its premises. There are over 100 different types of Sakura trees, such as yaezakura trees (which have five petals per bloom) and Beni-temari (which are red ball-shaped and can only be seen here).

Every year, the gates to the garden are specially opened to the general public during a one-week period in mid-April. During the evening, the walk-through is lit up, which gives it a different atmosphere from the day.



Images:

© Osaka Convention & Tourism Bureau

© Japan Mint



IMAGES © HOSHIFURU VILLAGE TENGU

SHIKOKU KARST TENGU HIGHLANDS

BY KOCHI TOURISM

Karst is a special type of landscape that is formed by the dissolution of soluble rocks, including limestone and dolomite, over millions of years. In Kochi prefecture, you will come across karsts, which are not common in Japan. Kochi Prefecture has the highest percentage of forested land in Japan and is located on the south side of Shikoku Island. The area is known for its pure blue rivers, wild capes, and beaches with spectacular views of the Pacific Ocean.

When visiting Kochi, one cannot skip travelling to the Shikoku Karst Plateau, extending east-west for about 25 kilometres along the border between Ehime and Kochi prefectures at elevations ranging from 1000 to 1500 metres. The Shikoku Karst is a majestic place with an abundance of scenic beauty that is counted as one of Japan's three major karst landscapes and is also considered the "Rooftop of Shikoku." The Tengu Highland in Shikoku Karst Plateau

is located at an altitude of about 1,400 m and is a great viewing spot where the starry sky spreads out. It can be reached by a 30-minute drive from Yusuhara town.

As per Japanese folklore, tengu are recurring characters, bright-red, long-nosed goblin-type deities that fly and live in remote mountain areas. This location was undoubtedly an ideal habitat for legendary figures due to its remoteness and high altitude. This is why there is no evidence of the existence of Tengu Highlands.

The Hoshifuru Village of Tengu is the only accommodation and an ideal place to enjoy the changing landscapes in every season. It offers unique hiking trails among the rocky karsts. The place was refurbished in July 2021. A beautiful, light contrast of green pastures and white limestone can be seen along the ridge line and gentle slopes on both

sides of the area. The rooms have starry rooms with glass ceilings, so you can gaze at the stars while falling asleep peacefully and waking up to the morning mist. You can also soak in a large bath that uses Shimanto source water. One can enjoy views of either the horizon of the plateau and the Pacific Ocean or Mt. Ishizuchi.

Hoshifuru Village of Tengu has an astronomical observatory by Goto Optical Research Institute Co., Ltd., which has concluded a comprehensive partnership agreement with Tsuno Town. If you arrive during the rainy season or do not plan to stay here, then you can visit the planetarium, which offers four shows: the projection of the starry sky of Shikoku Karst, the majestic scenery, and a rundown on the history of Tsuno Town. For meals, the restaurant here offers three courses of Japanese and Western Kaiseki cuisine. Child meals are also available.

*Come see the
Cherry Blossoms
in Japan.*



www.nth-india.com



TEMPOZAN HARBOR VILLAGE – OSAKA

BY SHARAD SHARMA

Osaka, has been rated is one of the best tourist destinations in Japan and also ranked in top 03 big cities in Asia. A trip to Japan is incomplete without visit to this ever-evolving cosmopolitan city of Osaka. With different districts, offering variety of attractions for leisure traveller or business visitors. Amongst all the venues, one such destination that stands out is Tempozan Harbor Village. It is a complete entertainment venue with excellent facilities to carry out day meetings or residential conferences.

THV (Tempozan Harbor Village) complex includes, a hotel, world's largest aquarium, market place, Legoland Discovery center, cruise ship and many other entertainment options.

Hotel Seagull, is part of the THV (Tempozan Harbor Village), with 96 Rooms offering starting room size of 26SqMtr and banquet facility that could accommodate up to 300 people for

conference or cocktail dinner. The Hotel Seagull offers unique proposition like no other, all rooms offer ocean view.

Osaka Aquarium Kaiyukan, is one of Japan's most spectacular aquariums, world-renowned for its innovative presentation. Kaiyukan shows the aquatic animals of the Pacific Rim at their most vibrant and dynamic, by recreating the natural environment of their habitats. During the weekdays it is open from 1030Hrs to 2000Hrs and on weekend or holidays it is open from 0930Hrs to 2000Hrs. One can also interact with these aquatic species, as aquarium has different feeding timings and one can check website or aquarium authorities for details.

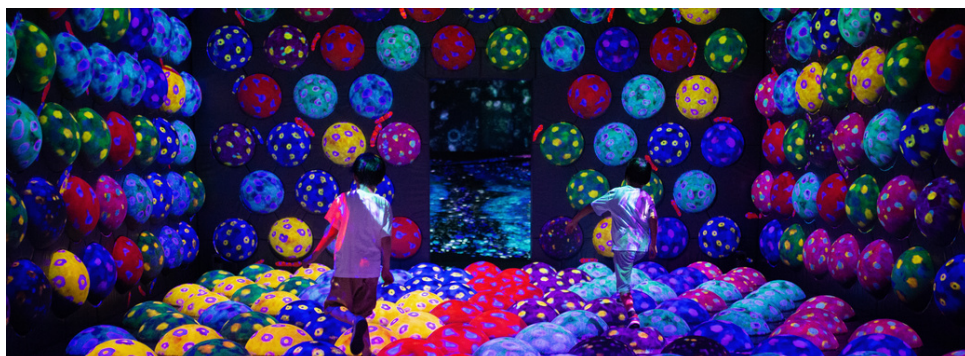
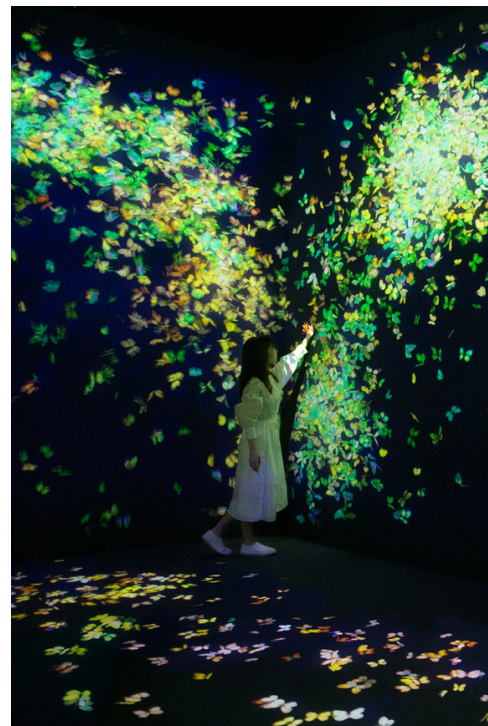
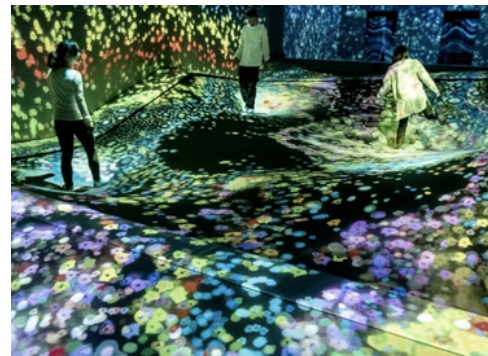
Cruise ship Santa Maria, it is based on the original Santa Maria ship and twice the size. Amid refreshing sea breezes, passengers can enjoy a delightful cruise on Osaka Bay.

Tempozan Giant Ferris Wheel, at 100 m in

diameter and 112.5 m in height, this is one of the largest Ferris wheels in the world. It takes 15 minutes to complete a ride. On a sunny day, a wide panoramic view of Osaka Bay, Akashi Kaikyo Bridge and Kansai International Airport can be seen. In the nighttime, lighting on the Ferris wheel provides a weather forecast for the next day. It is lit up in red for a sunny day, green for a cloudy day and blue for a rainy day. Opens from 1000Hrs to 2200Hrs.

Tempozan Marketplace is a commercial complex adjacent to Kaiyukan. Designed under the concept of "Festival Marketplace," the complex consists of nearly 80 retail and dining establishments, including shops carrying Osaka souvenirs as well as anime and other character merchandise, fashion boutiques, restaurants, and a food theme park focusing on Osaka cuisine.

If you are planning a MICE trip or leisure tour to Osaka, do not forget to include THV in your itinerary.



TEAMLAB FOREST FUKUOKA IN BOSS E•ZO FUKUOKA

BY KARL BAHCECI

In the west of Fukuoka's Central Ward one can find the BOSS E • ZO FUKUOKA, an entertainment building with many unique and fun ways to spend your day. Among the most popular and unique of these experiences is the teamLab Forest Fukuoka located on the 5th floor.

In the world of entertainment, teamLab is known as one of the pioneers that combines art, science, and technology to make one of a kind interactive exhibit. Opened in July of 2020, the teamLab Forest Fukuoka is a relatively new installation among the many that teamLab have created and it stresses the importance of biodiversity and our natural environment all while using cutting technology to tell a story.

The space is divided into several different zones, each one with their own

activities and attractions. In the Catching and Collecting Forest, one can catch different sorts of animals by using a downloadable app to add them to your collection. Then, once you've inspected the animal you found you release it back into the wild so other visitors can take turns finding them. Several works follow upon it, with light obstacles and phantasmagorical imagery. You really have to be there to believe it!

Periodically throughout the year there are different seasonal events and the holographic light show changes to reflect them. With this many varieties, each time you visit the city you might encounter a totally different atmosphere inside.

Apart from teamLab's year-long installation there are many other

activities as well. On the fourth floor for example there is a baseball museum, but far from being simply a place you walk and admire the history of the sport, you can actually get active and try your hand at some baseball related activities. Then on the top floor there is actually a rooftop rail coaster for those looking for a bit more thrill in their day.

With the facility conveniently located next to the Hilton Hotel, baseball stadium Fukuoka Pay Pay Dome, and beach, there is an incredibly great variety of events that you can partake of here. Why not pay the place a visit when you come to Fukuoka?

Images copyright teamLab Forest Fukuoka, Kyushu © teamLab



Riding through Japan on your favourite motorcycle, explore all the fascinating places in the country. It is like a dream come true!



MOTO TOUR

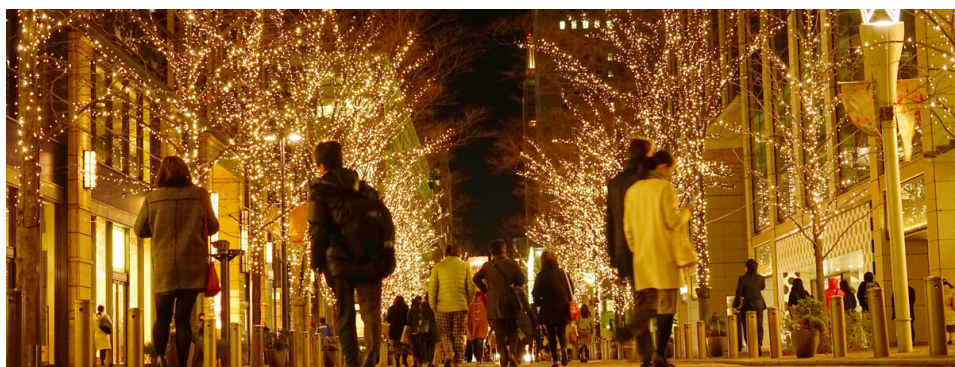
JAPAN



Fukuoka Departure
 19 MAR 2023 -
 25 MAR 2023
 7 Days/ 6 Nights



This is a course that packs some of the best riding and sightseeing spots Kyushu has to offer. From famous mountain winding roads like the Yamanami Highway to magical coastline landscapes like the ones you will experience crossing the five bridges to Shimoshima island. Gear up for the next Japanese adventure.



A SPLENDID CHRISTMAS HOLIDAY IN TOKYO

BY EMI ITO

Christmas is that time of the year, when we all dream of magical holidays, sumptuous food and incredible souvenirs / gifts for friends and family. A tradition of Christmas market that started in 1393 in Germany, soon spread all over Europe and now has become a worldwide phenomenon. Japan has not been left behind and some of the splendid Christmas markets are held across Tokyo. Massive Christmas trees are installed with shiny illuminations with shops selling Christmas goods, hot food and drinks based on the theme / style from Europe. These special exhibits start from November and go up to Christmas in December.

Tokyo Christmas Market, Hibiya Park is amongst the biggest in Japan and is scheduled to be operating from 09th to 25th December. With almost 100 of trees illuminated to create a fairy-tale atmosphere, to top it up, a 14m-tall Christmas pyramid imported from

Dresden, Germany, will be installed as a centrepiece. Also, there will be more than 100 different varieties of beer brands that will be up for grab. It is advisable to book an e-ticket in advance to avoid long queues and rush. Market shall be open from 11:00hrs to 22:00hrs.

Roppongi Hill Christmas Market Palace will be operational from 26th Nov to 25th Dec. Located in Roppongi Hills, the event is a true representation of German Christmas market in Stuttgart with huts selling Christmas ornaments imported from Germany, as well as authentic German food like sausages and stew. The Keyakizaka street illuminations are set to begin on November 10th and will run until December 25th (5 pm - 11 pm) this year.

Tokyo Skytree Town Christmas

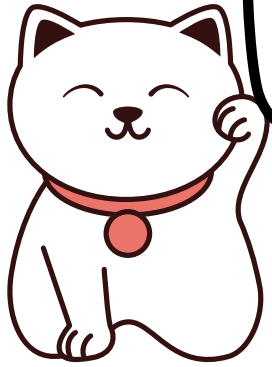
Market, the 634-meter Tokyo Skytree will light up reflecting seasons spirit. Inside Skytree Town, it will be lit up with thousands of LED lights and at the base of the tower a market will be set up, selling German beer and snacks. Popular bands will also perform giving visitors a pure European vibe.

Apart from these incredible Christmas Markets, the city hosts multiple illumination venues for tourists and locals to soak in the festivities. Yebisu Garden Place will have a large illuminated Christmas tree and surrounding areas will also be illuminated. Roppongi Tokyo Midtown will also be illuminated and will have a special attraction "the shining snow light globe".

This winter visit Tokyo to enjoy in the festive vibe.

Christmas in Tokyo





Useful
Expressions in
Japanese

Let us
learn



Kirei - Beautiful or Clean
Shitsurei - Rude or Impolite
Yuumei - Famous
Teinei - Polite
Suki - Like or Favorite
Kirai - Don't Like or Hate
Shizuka - Quiet
Shinsetsu - Kind
Hima - Free
Nigiyaka - Lively
Benri - Convenient
Fuben - Inconvenient
Genki - Well or Health

PUBLISHED BY NIPPON TAIYO HOSPITALITY, MEDIA DIVISION.

OPINIONS EXPRESSED WITHIN THE CONTENT ARE SOLELY RESPONSIBILITY OF THE AUTHOR AND DO NOT REFLECT THE OPINIONS AND BELIEFS OF NIPPON TAIYO HOSPITALITY OR ITS AFFILIATES.

FOR FEEDBACK WRITE AT SHARAD@NTH-INDIA.COM OR SONIA@NTH-INDIA.COM