

Air Latch Installation Instructions

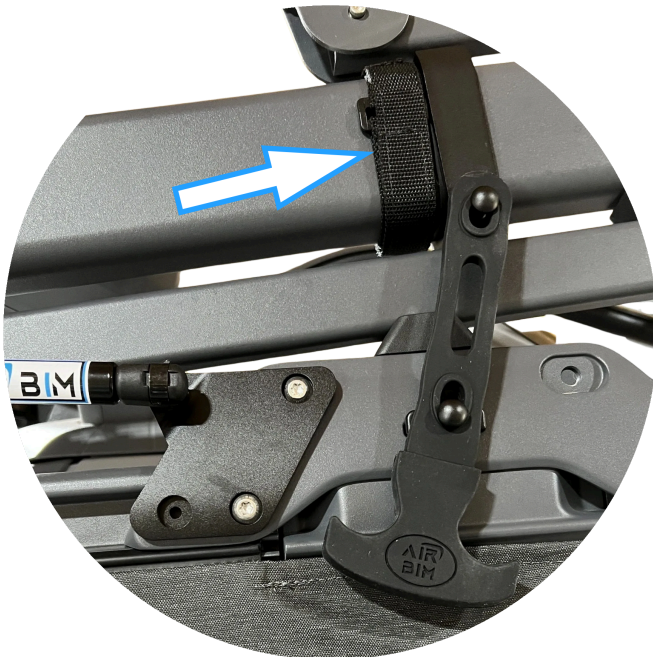


What's in the kit:

1. Two upper latch mounts (Outer Mounts)
2. Two upper latch mounts (Inner Mounts)
3. Two arm gaskets for the upper mounts
4. Two lower latch mounts (Outer Mounts)
5. Two lower latch mount (Inner Mounts)
6. 8 Bolts M4-0.70 X 12MM SOCKET CAP SCREW 316 ST ST
7. Two Air Latch Pull Straps

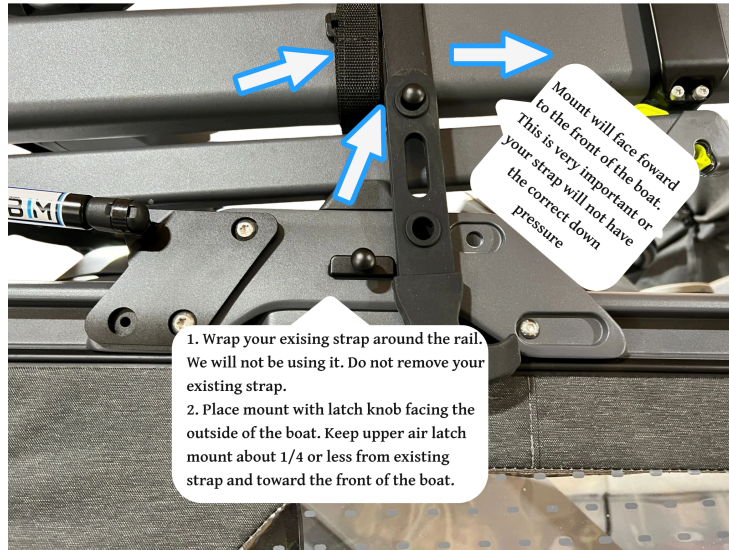
Installation:

1. First step is to wrap your stock straps around the rail. We will not be using these but Do not remove the straps. You would be left with an unwanted hole in your arm rail.

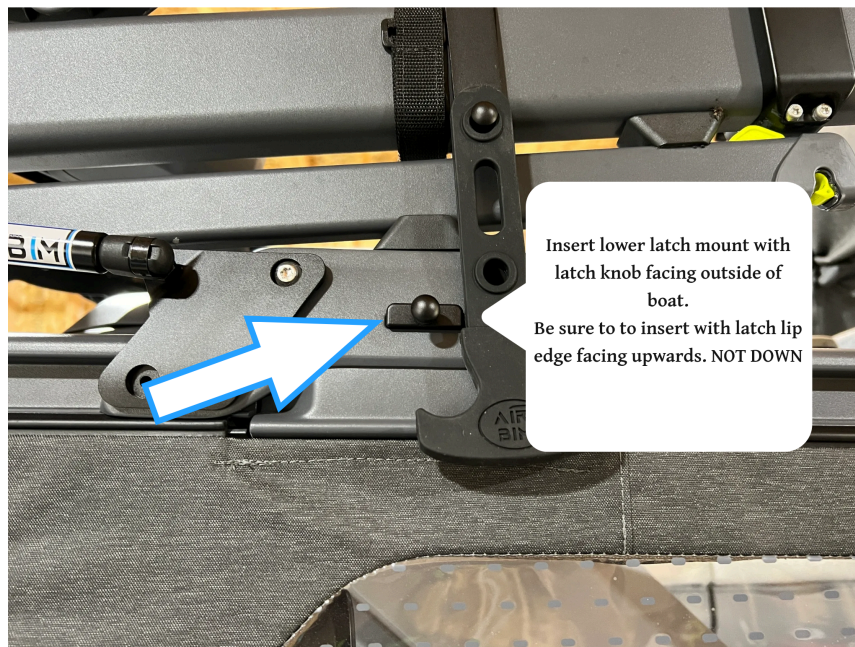


2. Next we will install the upper arm rail mount. Place one of the two gaskets close to the existing stock strap we just wrapped up keeping the gasket about ¼ inch or less away. The gasket should wrap around the arm meeting in the center of the arm. **Please note the gasket and mount will be mounted facing forward to the front of the boat NOT behind the strap.**

3. Next we will place the upper arm mount over the gasket with the latch knob facing the outside of the boat as shown here. Then take the upper inner air latch mount and combine the two with two stainless socket cap screws provided and tighten down. Use a small amount of your favorite loctite and Secure them tight but do not over tighten the bolts.



4. Next insert the lower outer mount from the outside of the boat in as shown here. The air latch knob should be facing the outside of the boat. **Please Note: The mount has a lip on it and that lip should be facing upward as shown.**



5. Next place the lower inner mount on and insert the two provided socket cap screws. Use a small amount of your favorite loctite and Secure them tight but do not over tighten the bolts.



6. Repeat the process for the other side.



Operation and Maintenance:

Place rubber latch over the top of the upper mount knob, pull down using the strap handle and place strap over the lower latch knob.

To remove pull down on the strap and lift over the lower mount knob.

Before operation remove both straps from each side and place straps in the glove box (console) of the boat.

When finished and preparing to travel lower your bimini, **(Hopefully you are using our Airbim V3)** When lowering make sure your bimini lands nicely on the rubber bump stop mounts, if not adjust the bimini so it is on these mounts before you use the air latch to secure it.

From the outside of the boat use the air latch strap and secure it. Place the strap over the top of the upper mount knob, pull down using the strap handle and place the strap over the lower latch knob.

Although all our mounts are using UV treating in the anodized type III process and will last a long time with proper care, they will not hold up if in direct sunlight when stored. Many use an aftermarket cover and the mounts are covered well. You should always keep your mounts and boat fully covered when not in use to avoid any discoloration of the mounts due to some harsh UV climate areas or in general prolonged sunlight

Unfortunately due to the wide variation of customer care storage we do not warranty any discoloration on any of our products.

We recommend cleaning your mounts with after each use with a soft cloth and fresh water