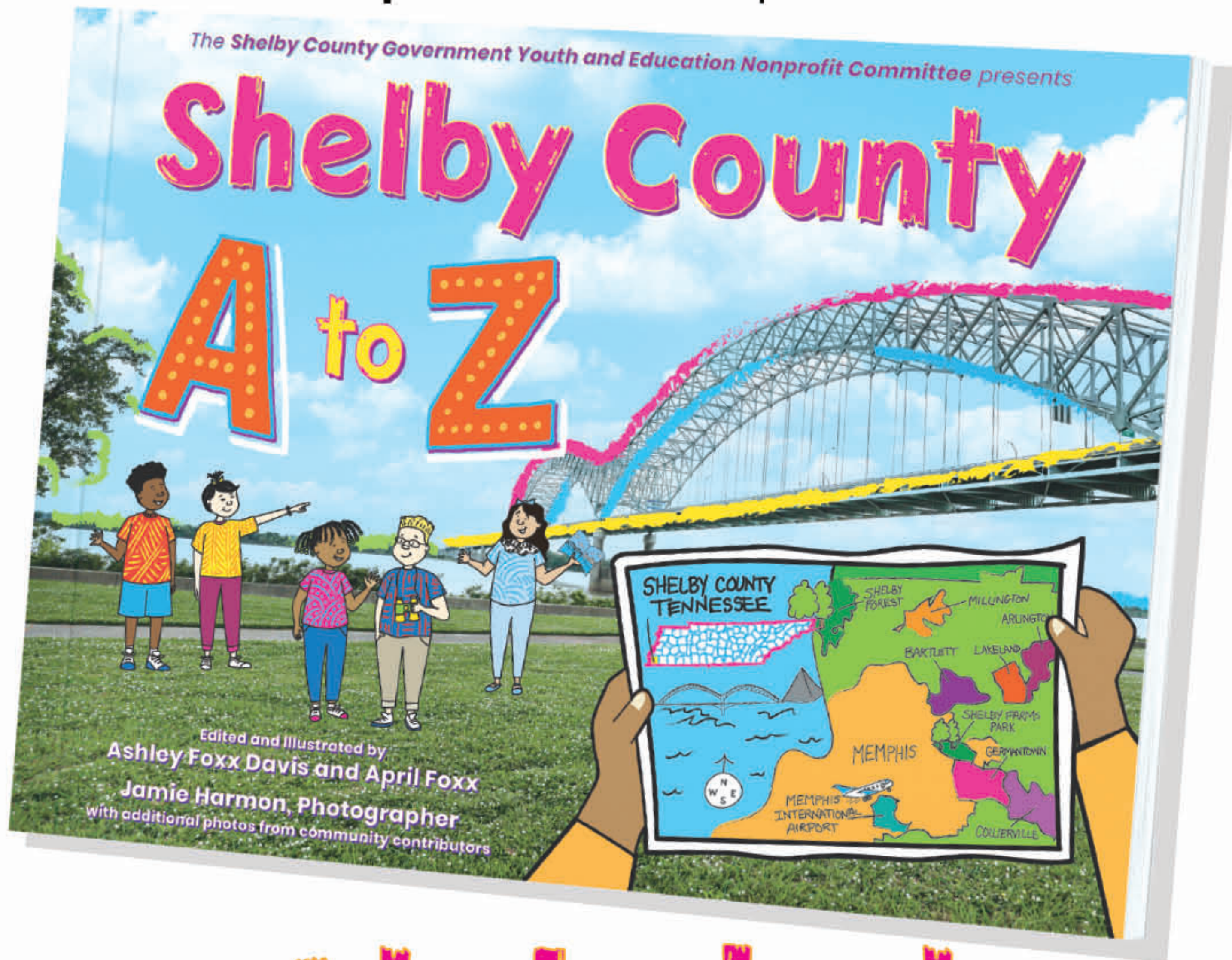


The **Shelby County Government Youth and Education Nonprofit Committee** presents



Alphabet Flashcards



www.ShelbyCountyAtoZ.com

A a



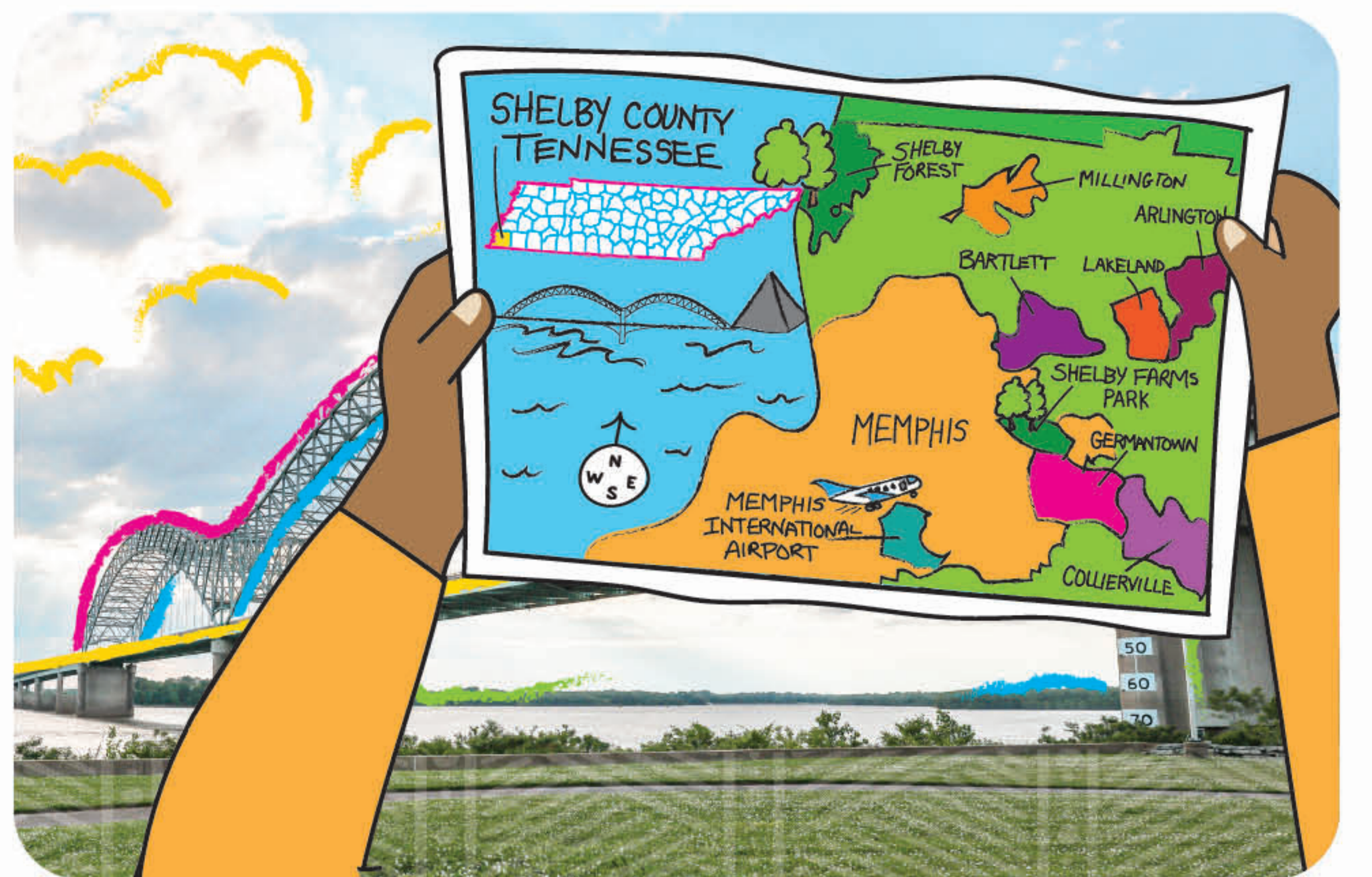
Agricenter

B b



Beale Street

C c



County

D d



Downtown

E e



Everybody

F f



Farmers Market

G g



Guitar

Hh



Hattiloo

Ii



Interstate

Jj



Jookin

Kk



Kings

L l



Le Bonheur
Children's Hospital

M m



Memphis

N n



National
Civil Rights Museum

O o



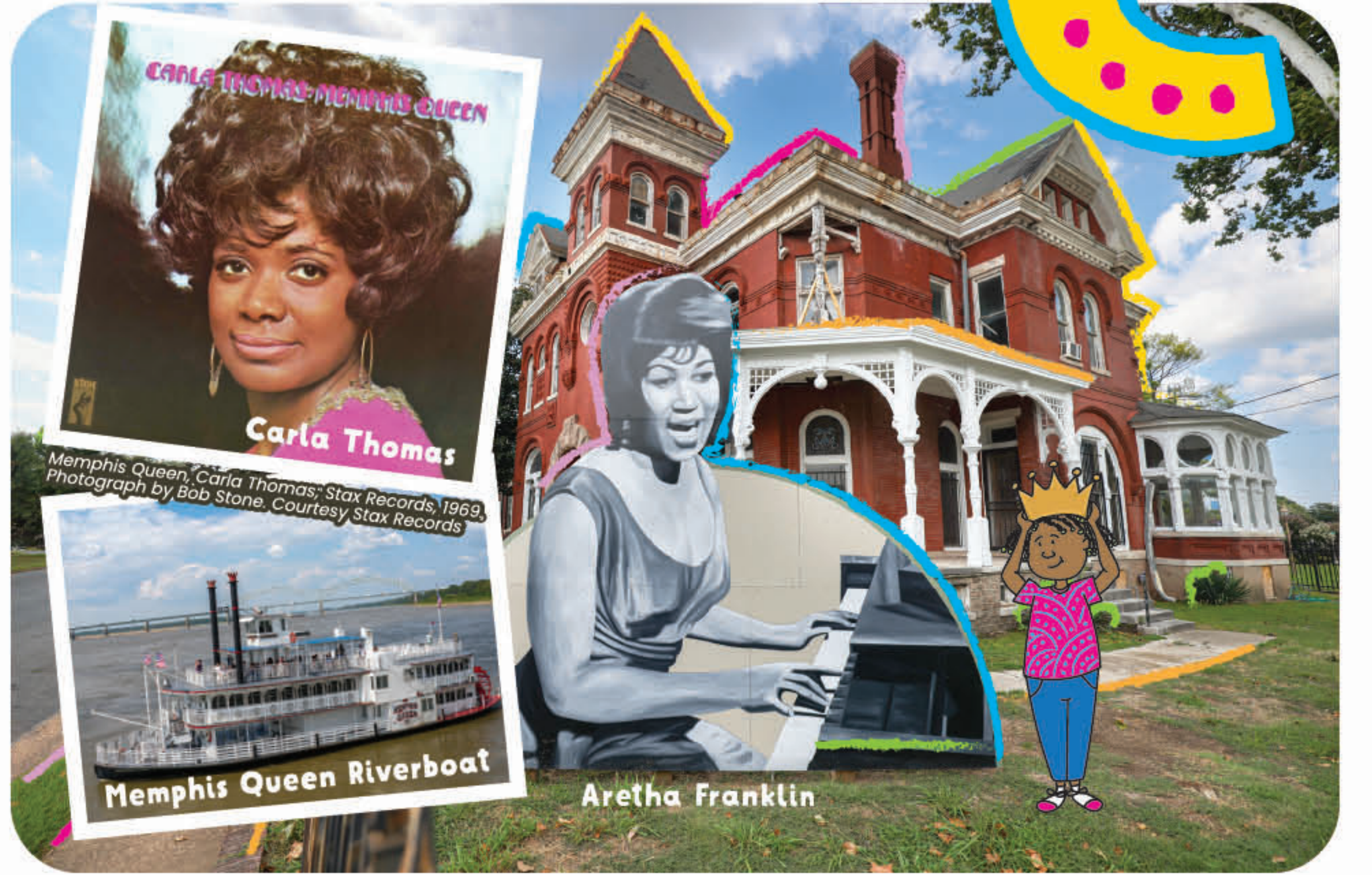
Office

P P



Poplar

Q Q q



Queens

R r



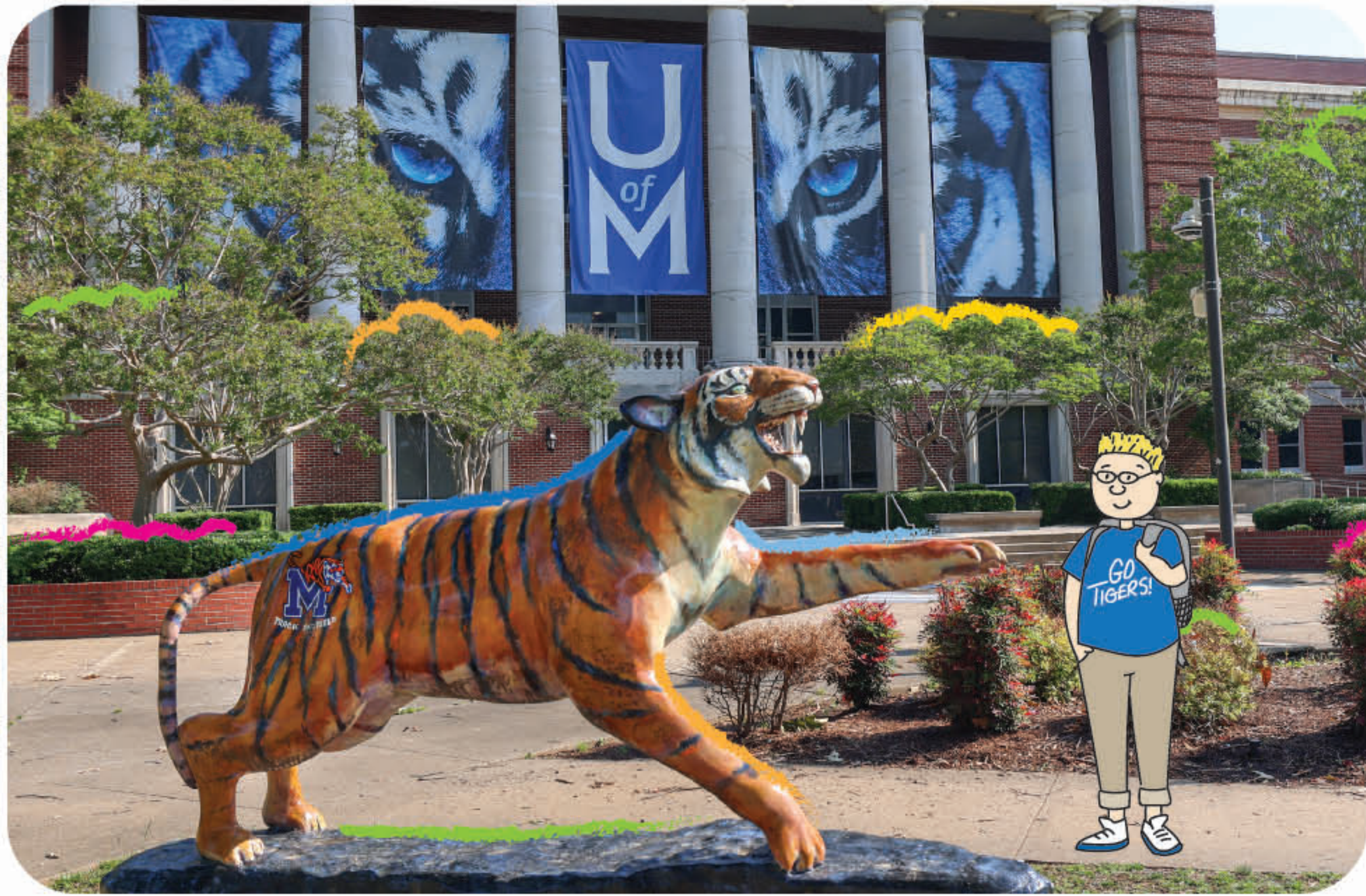
River

S s



Soul Food

T t



Tigers

U u



Underground Railroad

V v



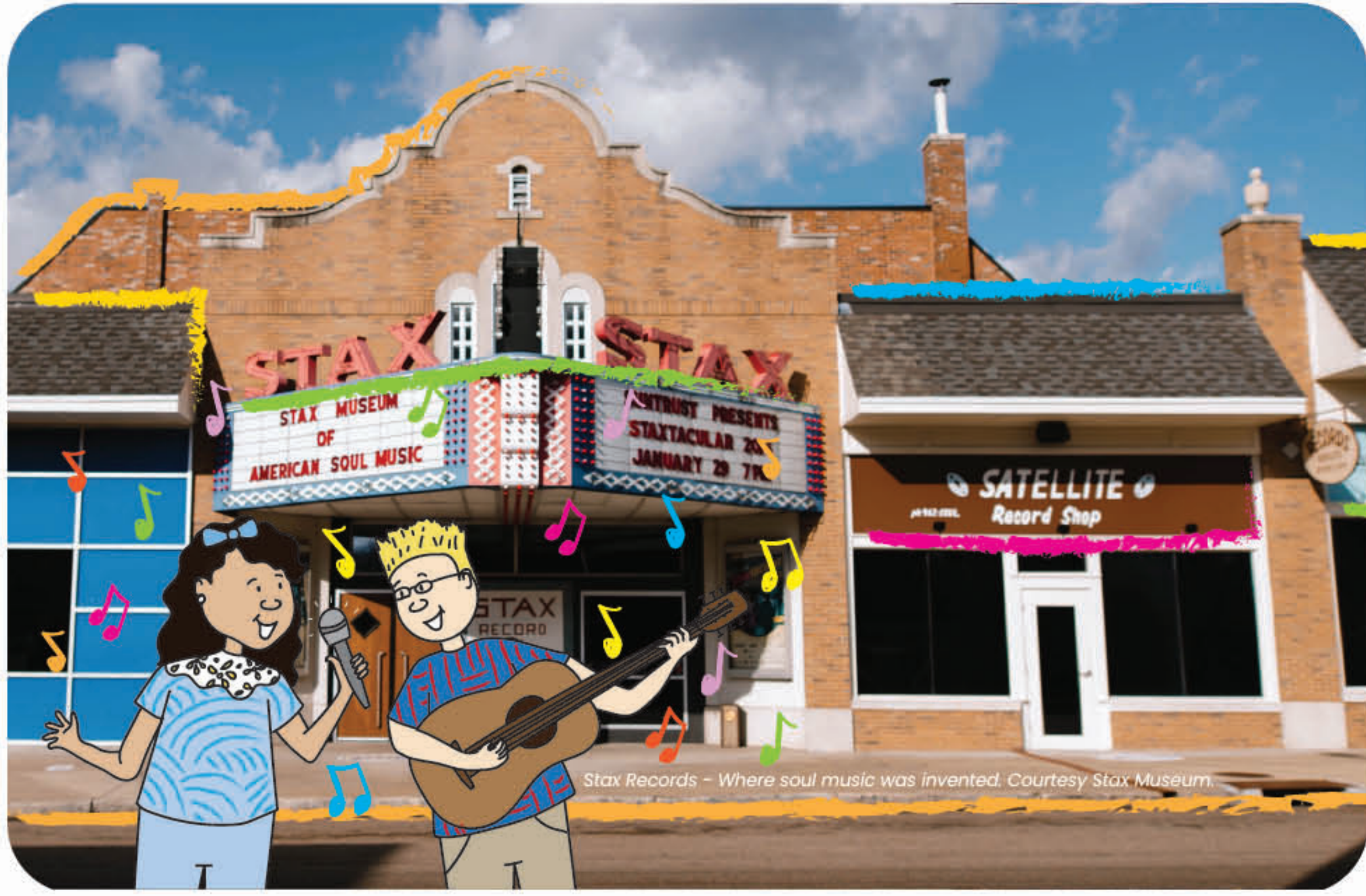
Victorian Village

W w



Walk

X x



Stax Museum

Y y



Young Avenue

Z z



Zoo

A a



Acres

Ee



Eat Local

Ii



Ida B. Wells

Oo



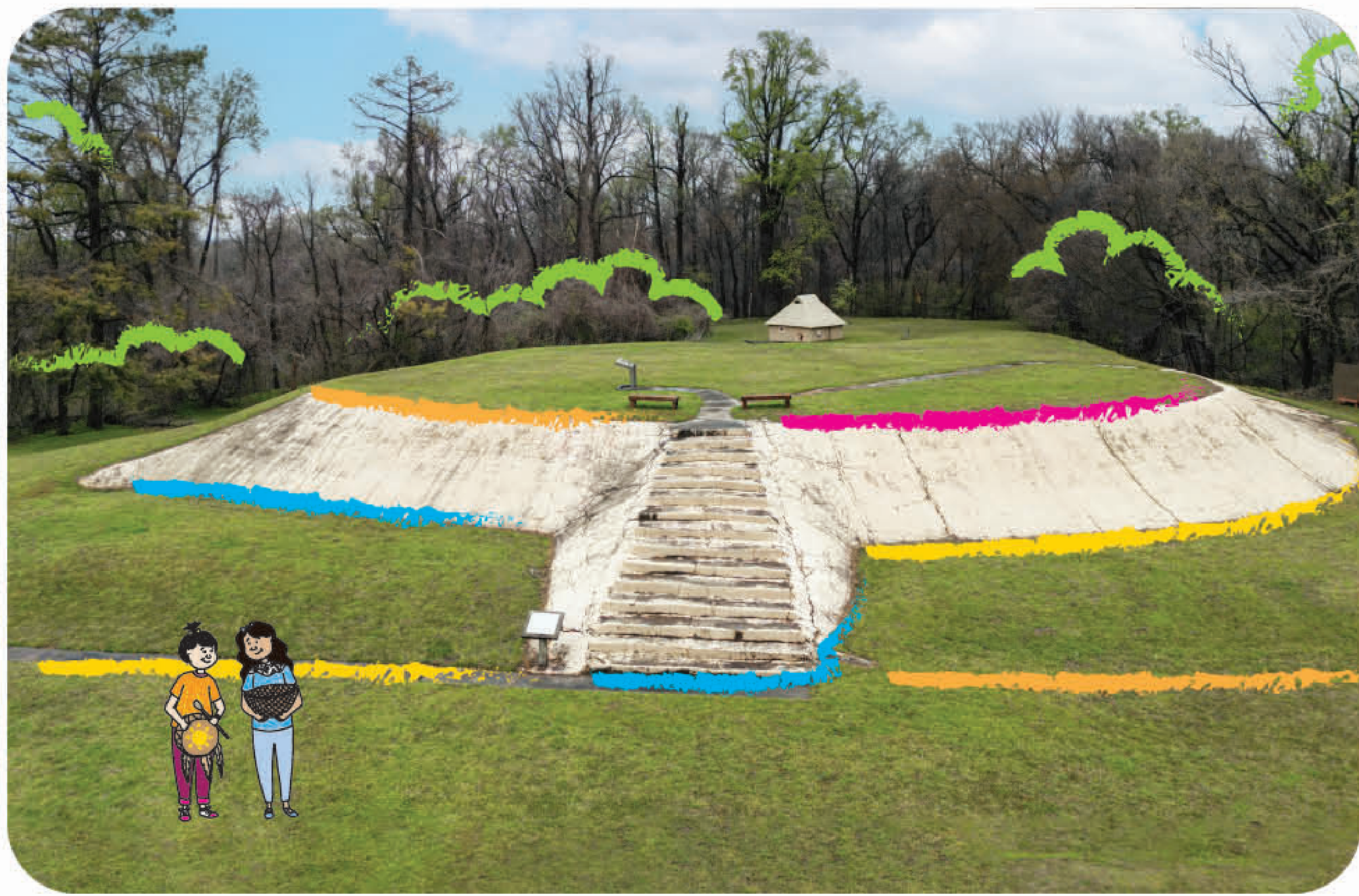
Overton Park

Uu



Universities

C h



Chucalissa
Indian Village

S h



Shelby

T h

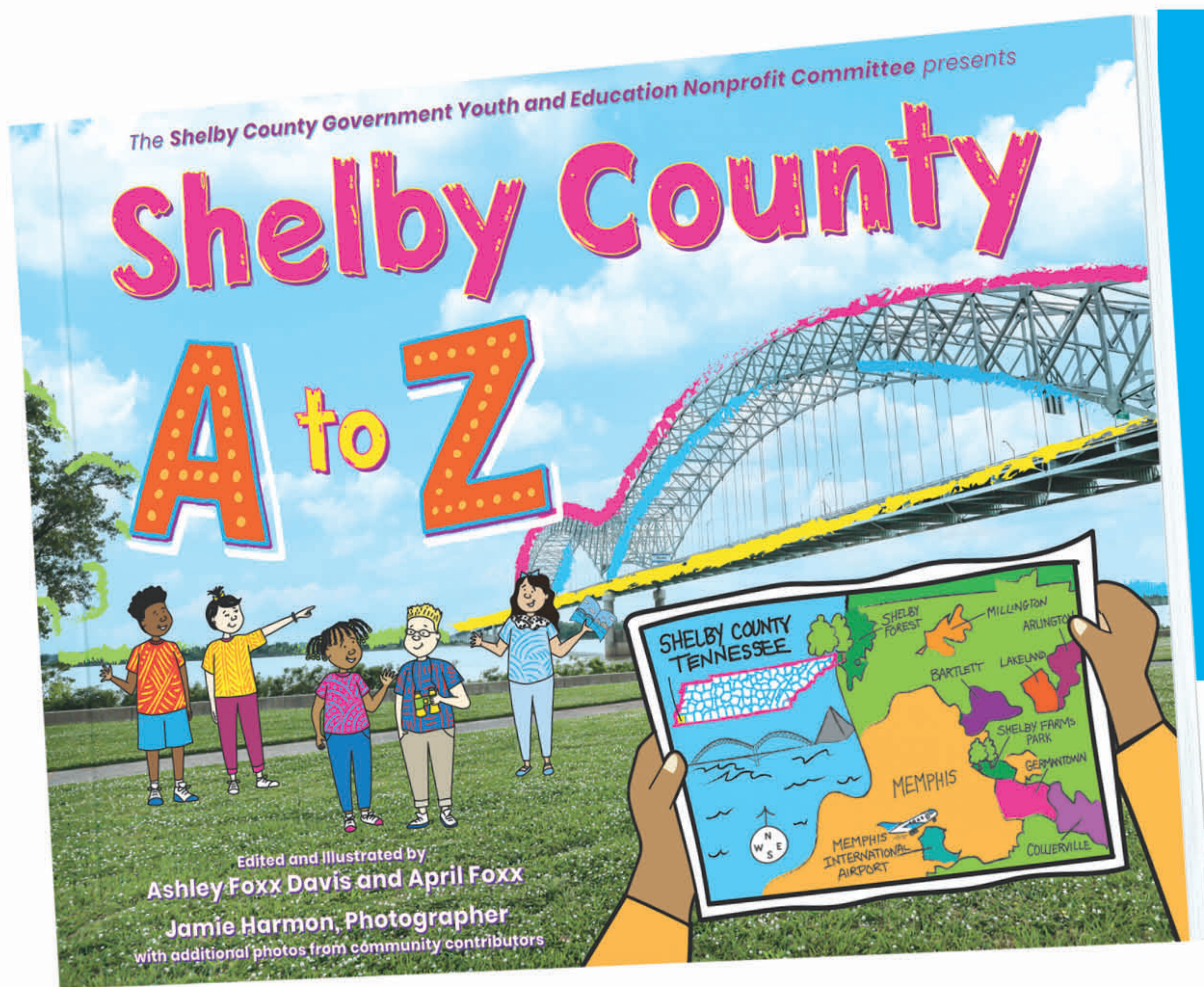


Theater

W h



Whitehaven



Tell us what you love about
Shelby County!
Tag us! [@shelbycountyatoz](https://www.instagram.com/shelbycountyatoz)
on social media and
use the hashtag
#ShelbyCountyAtoZ!

Matching Anchor Chart
also available!
Download on our website:
ShelbyCountyAtoZ.com

About Our Word Choices

The words paired with each letter came from suggestions all across our community and were chosen to help early readers on their path to sounding out words. We worked with literacy experts to ensure that each term not only aids in learning but also enriches your child's understanding of the place we all call home. Please use the flash cards and anchor chart as a companion with your copy of *Shelby County A to Z*.

Read Along! **ALPHABET** Anchor Chart

	Aa Agricenter	Bb Beale Street	Cc County	Dd Downtown	Ee Everybody
Ff Farmers Market	Gg Guitar	Hh Hattiloo	Ii Interstate	Jj Jookin	Kk Kings
Ll Le Bonheur Children's Hospital	Mm Memphis	Nn National Civil Rights Museum	Oo Office	Pp Poplar	Qq Queens
Rr River	Ss Soul Food	Tt Tigers	Uu Underground Railroad	Vv Victorian Village	Ww Walk
Xx Stax Museum	Yy Young Avenue	Zz Zoo	Long Vowels		
Aa Acres	Ee Eat Local	Ii Ida B. Wells	Oo Overton Park	Uu Universities	
Digraphs					
Ch Chucalissa Indian Village	Sh Shelby	Th Theater	Wh Whitehaven		

Letters can make many sounds. Sometimes letters can make two sounds. Sometimes you can put letters together to make new sounds.

Let's take a look at the long vowels **A, E, I, O, and U** and the digraphs **Ch, Sh, Th, and Wh.**

ShelbyCountyAtoZ.com



www.ShelbyCountyAtoZ.com