



510 N Sheridan Road Suite D | Tulsa, OK 74115 | (918) 520-3441 | OMMA #: LAAA-0095-HXSF

# Report of Analysis

Report Status: Final

**Client Name:** Heart and Soil, LLC  
**Address:** 1004 Hwy 54  
 Guymon, OK 73942  
**Phone:** 806-782-9938  
**OMMA #:** GAAA-RC4Q-LIMD  
 08/30/2023  
**Collected:**  
**Harvest/**  
**Production:** 12/26/2023  
**Special Notes:**

**Lab ID:** -9505  
**Strain:** White Truffle  
**Matrix:** Flower - Cured  
**Sample Batch #:** 1A40E01000147C1000004252  
**Sample Weight:** 10  
**Received:** 01/23/2024



## Summary of Results

Potency Profile		Terpene Profile	
Cannabinoid	Weight %	Terpene	Result %
CBDV	ND	α-Pinene	0.0447
CBDA	ND	Camphene	< LOQ
CBN	ND	Myrcene	0.152
CBD	ND	a-Terpinene	< LOQ
CBGA	0.690	β-pinene	0.0707
CBG	ND	3-Carene	< LOQ
THCV	ND	Ocimene	0.155
Δ9-THC	0.788	Delta-limonene	0.405
Δ8-THC	ND	p-Cymene	< LOQ
THCA	29.5	Eucalyptol	< LOQ
CBC	ND	γ-Terpinene	< LOQ
<b>Total THC Delta-9(%)</b>	<b>26.7</b>	Terpinolene	0.0502
<b>Total THC Delta-9(mg/g)</b>	<b>267</b>	Linalool	< LOQ
<b>Total Cannabinoids (%)</b>	<b>31.0</b>	Isopulegol	0.0478
<b>Total Cannabinoids (mg/g)</b>	<b>310</b>	Geraniol	< LOQ
		β-Caryophyllene	0.731
		Humulene	0.336
		cis-Nerolidol	0.101
		trans-Nerolidol	0.547
		Nerolidol	0.648
		Guaiol	< LOQ
		Caryophyllene oxide	0.0616
		α-Bisabolol	< LOQ
		<b>Total Terpene %</b>	<b>2.84</b>

Microbiological Profile	
All Results	Pass

Heavy Metals Screening	
All Results	Pass

Moisture Content		
All Results	11.15 %	Pass

Pesticide Screening	
All Results	Pass

Filt and Foreign Materials Screening	
All Results	Pass

**NOTES:** mg/L = ppm, µg/L = ppb. "<" denotes "less than". ND is non-detectable quantity.

This report of analysis may not be modified in any way, or reproduced except in full, without written approval from Transparent Testing. Results as reported relate only to samples as submitted, unless specifically noted otherwise. Statements of conformity are reported as simple acceptance and do not apply any measurement of uncertainty values. Measurement uncertainty is available upon request. **The Limit of Detection (LOD)** is the lowest limit at which the method can detect an analyte's presence as greater than zero. **The Limit of Quantitation (LOQ)** is the lowest limit at which the method is accurately able to quantify an analyte. The Threshold is the limit at which the Oklahoma Medical Marijuana Authority (OMMA) deems medical marijuana and marijuana-infused products as safe for use.



**PJLA**  
 Testing  
 Accreditation # 115041  
 ISO/IEC 17025:2017 Accredited

# Potency

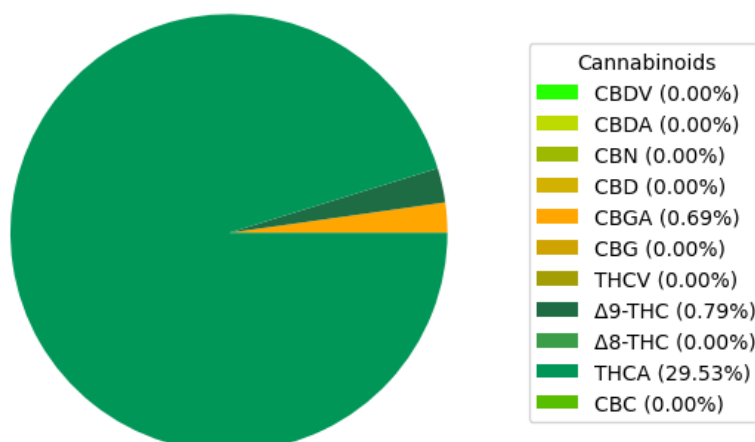
Date Completed: 01/25/2024

Instrument: Agilent 1100 (HPLC) - Agilent (DAD)

Lab Tech: Andrea Burrows

Analyte	Weight (%)	Result (mg/g)	LOQ (mg/g)
CBDV	ND	ND	0.650
CBDA	ND	ND	0.650
CBN	ND	ND	0.650
CBD	ND	ND	0.650
CBGA	0.690	6.90	0.650
CBG	ND	ND	0.650
THCV	ND	ND	0.650
$\Delta$ 9-THC	0.788	7.88	0.650
$\Delta$ 8-THC	ND	ND	0.650
THCA	29.5	295	0.650
CBC	ND	ND	0.650
<b>Total CBD</b>	ND	ND	
<b>Total THC</b>	26.7	267	

Cannabinoid Distribution (%)



**NOTES:** mg/L = ppm,  $\mu$ g/L = ppb. "<" denotes "less than". ND is non-detectable quantity.

This report of analysis may not be modified in any way, or reproduced except in full, without written approval from Transparent Testing. Results as reported relate only to samples as submitted, unless specifically noted otherwise. Statements of conformity are reported as simple acceptance and do not apply any measurement of uncertainty values. Measurement uncertainty is available upon request. **The Limit of Detection (LOD)** is the lowest limit at which the method can detect an analyte's presence as greater than zero. **The Limit of Quantitation (LOQ)** is the lowest limit at which the method is accurately able to quantify an analyte. The Threshold is the limit at which the Oklahoma Medical Marijuana Authority (OMMA) deems medical marijuana and marijuana-infused products as safe for use.



**PJLA**  
Testing  
Accreditation # 115041  
ISO/IEC 17025:2017 Accredited

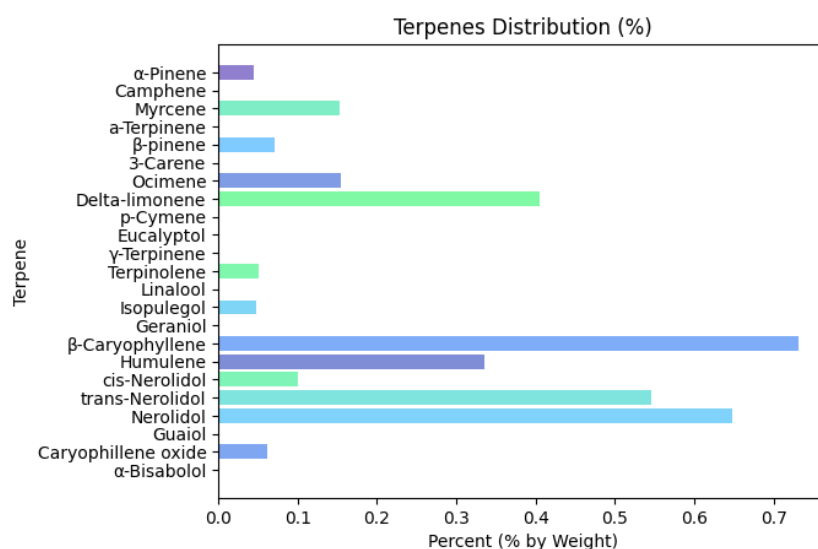
# Terpenoid

Date Completed: 01/27/2024

Instrument: HP 6890 (GC) - Agilent (FID)

Lab Tech: Andrea Burrows

Analyte	Result (mg/g)	Result (%)	LOD (µg/mL)	LOQ (µg/mL)
α-Pinene	0.447	0.0447	6.25	12.5
Camphene	< LOQ	< LOQ	6.25	12.5
Myrcene	1.52	0.152	6.25	12.5
a-Terpinene	< LOQ	< LOQ	6.25	12.5
β-pinene	0.707	0.0707	6.25	12.5
3-Carene	< LOQ	< LOQ	6.25	12.5
Ocimene	1.55	0.155	6.25	12.5
Delta-limonene	4.05	0.405	6.25	12.5
p-Cymene	< LOQ	< LOQ	6.25	12.5
Eucalyptol	< LOQ	< LOQ	6.25	12.5
γ-Terpinene	< LOQ	< LOQ	6.25	12.5
Terpinolene	0.502	0.0502	6.25	12.5
Linalool	< LOQ	< LOQ	6.25	12.5
Isopulegol	0.478	0.0478	6.25	12.5
Geraniol	< LOQ	< LOQ	6.25	12.5
β-Caryophyllene	7.31	0.731	6.25	12.5
Humulene	3.36	0.336	6.25	12.5
cis-Nerolidol	1.01	0.101	6.25	12.5
trans-Nerolidol	5.47	0.547	6.25	12.5
Nerolidol	6.48	0.648	6.25	12.5
Guaiol	< LOQ	< LOQ	6.25	12.5
Caryophyllene oxide	0.616	0.0616	6.25	12.5
α-Bisabolol	< LOQ	< LOQ	6.25	12.5
<b>Total Terpenes:</b>	<b>28.4</b>	<b>2.84</b>		



**NOTES:** mg/L = ppm, µg/L = ppb. "<" denotes "less than". ND is non-detectable quantity.

This report of analysis may not be modified in any way, or reproduced except in full, without written approval from Transparent Testing. Results as reported relate only to samples as submitted, unless specifically noted otherwise. Statements of conformity are reported as simple acceptance and do not apply any measurement of uncertainty values. Measurement uncertainty is available upon request. **The Limit of Detection (LOD)** is the lowest limit at which the method can detect an analyte's presence as greater than zero. **The Limit of Quantitation (LOQ)** is the lowest limit at which the method is accurately able to quantify an analyte. The Threshold is the limit at which the Oklahoma Medical Marijuana Authority (OMMA) deems medical marijuana and marijuana-infused products as safe for use.



**PJLA**  
Testing  
Accreditation # 115041  
ISO/IEC 17025:2017 Accredited

## Heavy Metals

PASS

Date Completed:

Instrument: Perkin Elmer Elan DRC II (ICP-MS)

Lab Tech: Marchel Crawford

Analyte	Result (ppm)	Threshold (ppm)	LOD (ppm)	LOQ (ppm)	Pass/Fail
Cadmium	ND	0.200	0.0500	0.100	Pass
Lead	ND	0.500	0.125	0.250	Pass
Arsenic	ND	0.200	0.0500	0.100	Pass
Mercury	ND	0.100	0.0250	0.0500	Pass

## Microbial Analysis

PASS

Date Completed:

Instrument: Agilent AriaMx (qPCR)

Lab Tech: Ryan Bales

Analyte	Result (CFU/g)	Threshold (CFU/g)	Pass/Fail
Escherichia Coli (E. Coli)	ND	1.00	Pass
Yeast/Mold	ND	10,000	Pass
Salmonella spp	ND	1.00	Pass
Aspergillus Niger	ND	1.00	Pass
Aspergillus Fumigatus	ND	1.00	Pass
Aspergillus Terreus	ND	1.00	Pass
Aspergillus Flavus	ND	1.00	Pass

## Pesticide Profile

PASS

Date Completed:

Instrument: Agilent 1200 (HPLC) - Agilent 6460 (QQQ)

Lab Tech: Andrea Burrows

Analyte	Result (ppm)	LOQ (ppm)	Threshold (ppm)	Pass/Fail
Abamectin	ND	0.251	0.500	Pass
Azoxystrobin	ND	0.100	0.200	Pass
Bifenazate	ND	0.100	0.200	Pass
Etoxazole	ND	0.100	0.200	Pass
Imazalil	ND	0.100	0.200	Pass
Imidacloprid	ND	0.200	0.400	Pass
Malathion	ND	0.100	0.200	Pass
Myclobutanil	ND	0.100	0.200	Pass
Permethrin	ND	0.100	0.200	Pass
Spinosad	ND	0.100	0.200	Pass
Spiromesifen	ND	0.100	0.200	Pass
Spirotetramat	ND	0.100	0.200	Pass
Tebuconazole	ND	0.200	0.400	Pass

## Foreign Materials

PASS

Date Completed:

Instrument: NA

Lab Tech: Lab Technician

Analyte	Pass/Fail	Comments
Foreign Materials	Pass	N/A

**NOTES:** mg/L = ppm, µg/L = ppb. "<" denotes "less than". ND is non-detectable quantity.

This report of analysis may not be modified in any way, or reproduced except in full, without written approval from Transparent Testing. Results as reported relate only to samples as submitted, unless specifically noted otherwise. Statements of conformity are reported as simple acceptance and do not apply any measurement of uncertainty values. Measurement uncertainty is available upon request. **The Limit of Detection (LOD)** is the lowest limit at which the method can detect an analyte's presence as greater than zero. **The Limit of Quantitation (LOQ)** is the lowest limit at which the method is accurately able to quantify an analyte. The Threshold is the limit at which the Oklahoma Medical Marijuana Authority (OMMA) deems medical marijuana and marijuana-infused products as safe for use.



**PJLA**  
Testing  
Accreditation # 115041  
ISO/IEC 17025:2017 Accredited

# Water Activity

PASS

Date Completed:

Instrument: Rotronic HygroLab6 HC2-AW

Lab Tech: Marchel Crawford

Analyte	Finding	Threshold	Pass/Fail
Water Activity	0.384	0.65	Pass

# Moisture Content

PASS

Date Completed:

Instrument: NA

Lab Tech: Marchel Crawford

Analyte	Result (%)	Pass/Fail
Moisture Content	11.2	Pass



Approved By: Lab Director  
Transparent Testing, LLC  
01/31/2024

**NOTES:** mg/L = ppm, µg/L = ppb. "<" denotes "less than". ND is non-detectable quantity.

This report of analysis may not be modified in any way, or reproduced except in full, without written approval from Transparent Testing. Results as reported relate only to samples as submitted, unless specifically noted otherwise. Statements of conformity are reported as simple acceptance and do not apply any measurement of uncertainty values. Measurement uncertainty is available upon request. **The Limit of Detection (LOD)** is the lowest limit at which the method can detect an analyte's presence as greater than zero. **The Limit of Quantitation (LOQ)** is the lowest limit at which the method is accurately able to quantify an analyte. The Threshold is the limit at which the Oklahoma Medical Marijuana Authority (OMMA) deems medical marijuana and marijuana-infused products as safe for use.



**PJLA**  
Testing  
Accreditation #115041  
ISO/IEC 17025:2017 Accredited