



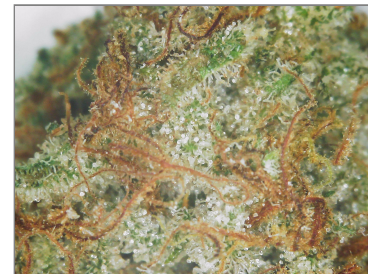
510 N Sheridan Road Suite D | Tulsa, OK 74115 | (918) 520-3441 | OMMA #: LAAA-0095-HXSF

Report of Analysis

Report Status: Final

Client Name: Heart and Soil, LLC
Address: 1004 Hwy 54
 Guymon, OK 73942
Phone: 806-782-9938
OMMA #: GAAA-RC4Q-LIMD
 08/30/2023
Collected:
Harvest/
Production: 12/26/2023
Special Notes:

Lab ID: -9504
Strain: White Runtz
Matrix: Flower - Cured
Sample Batch #: 1A40E01000147C1000004261
Sample Weight: 10
Received: 01/23/2024



Summary of Results

Potency Profile		Terpene Profile	
Cannabinoid	Weight %	Terpene	Result %
CBDV	ND	α-Pinene	0.418
CBDA	ND	Camphene	< LOQ
CBN	ND	Myrcene	0.943
CBD	ND	a-Terpinene	< LOQ
CBGA	0.812	β-pinene	0.221
CBG	0.0857	3-Carene	< LOQ
THCV	ND	Ocimene	0.0943
Δ9-THC	1.96	Delta-limonene	0.300
Δ8-THC	ND	p-Cymene	0.0374
THCA	27.7	Eucalyptol	< LOQ
CBC	ND	γ-Terpinene	< LOQ
Total THC Delta-9(%)	26.2	Terpinolene	< LOQ
Total THC Delta-9(mg/g)	262	Linalool	0.0833
Total Cannabinoids (%)	30.5	Isopulegol	0.0420
Total Cannabinoids (mg/g)	305	Geraniol	< LOQ
		β-Caryophyllene	0.349
		Humulene	0.139
		cis-Nerolidol	0.0390
		trans-Nerolidol	0.135
		Nerolidol	0.174
		Guaiol	0.0955
		Caryophyllene oxide	0.0450
		α-Bisabolol	0.124
		Total Terpene %	3.16

Microbiological Profile	
All Results	Pass

Heavy Metals Screening	
All Results	Pass

Moisture Content		
All Results	11.57 %	Pass

Pesticide Screening	
All Results	Pass

Filt and Foreign Materials Screening	
All Results	Pass

NOTES: mg/L = ppm, µg/L = ppb. "<" denotes "less than". ND is non-detectable quantity.

This report of analysis may not be modified in any way, or reproduced except in full, without written approval from Transparent Testing. Results as reported relate only to samples as submitted, unless specifically noted otherwise. Statements of conformity are reported as simple acceptance and do not apply any measurement of uncertainty values. Measurement uncertainty is available upon request. **The Limit of Detection (LOD)** is the lowest limit at which the method can detect an analyte's presence as greater than zero. **The Limit of Quantitation (LOQ)** is the lowest limit at which the method is accurately able to quantify an analyte. The Threshold is the limit at which the Oklahoma Medical Marijuana Authority (OMMA) deems medical marijuana and marijuana-infused products as safe for use.



PJLA
 Testing
 Accreditation #115041
 ISO/IEC 17025:2017 Accredited

Potency

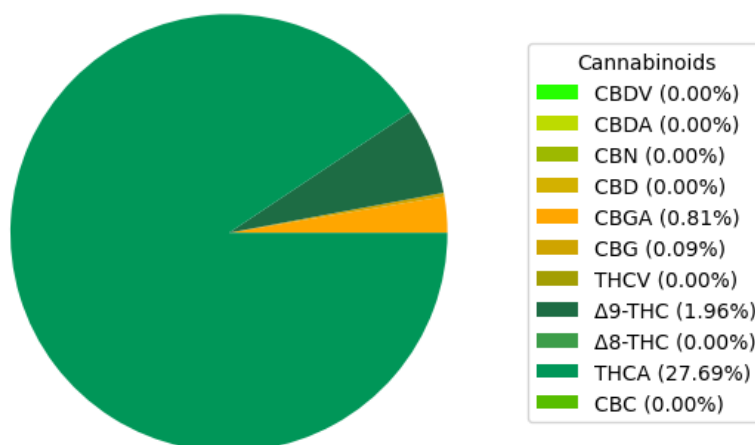
Date Completed: 01/25/2024

Instrument: Agilent 1100 (HPLC) - Agilent (DAD)

Lab Tech: Andrea Burrows

Analyte	Weight (%)	Result (mg/g)	LOQ (mg/g)
CBDV	ND	ND	0.650
CBDA	ND	ND	0.650
CBN	ND	ND	0.650
CBD	ND	ND	0.650
CBGA	0.812	8.12	0.650
CBG	0.0857	0.857	0.650
THCV	ND	ND	0.650
Δ 9-THC	1.96	19.6	0.650
Δ 8-THC	ND	ND	0.650
THCA	27.7	277	0.650
CBC	ND	ND	0.650
Total CBD	ND	ND	
Total THC	26.2	262	

Cannabinoid Distribution (%)



NOTES: mg/L = ppm, μ g/L = ppb. "<" denotes "less than". ND is non-detectable quantity.

This report of analysis may not be modified in any way, or reproduced except in full, without written approval from Transparent Testing. Results as reported relate only to samples as submitted, unless specifically noted otherwise. Statements of conformity are reported as simple acceptance and do not apply any measurement of uncertainty values. Measurement uncertainty is available upon request. **The Limit of Detection (LOD)** is the lowest limit at which the method can detect an analyte's presence as greater than zero. **The Limit of Quantitation (LOQ)** is the lowest limit at which the method is accurately able to quantify an analyte. The Threshold is the limit at which the Oklahoma Medical Marijuana Authority (OMMA) deems medical marijuana and marijuana-infused products as safe for use.



PJLA
Testing
Accreditation #115041
ISO/IEC 17025:2017 Accredited

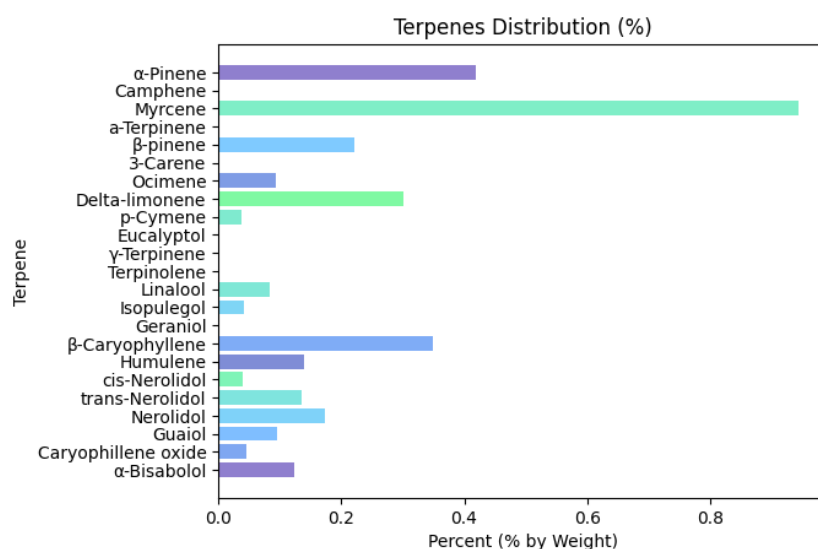
Terpenoid

Date Completed: 01/27/2024

Instrument: HP 6890 (GC) - Agilent (FID)

Lab Tech: Andrea Burrows

Analyte	Result (mg/g)	Result (%)	LOD ($\mu\text{g/mL}$)	LOQ ($\mu\text{g/mL}$)
α -Pinene	4.18	0.418	6.25	12.5
Camphene	< LOQ	< LOQ	6.25	12.5
Myrcene	9.43	0.943	6.25	12.5
a-Terpinene	< LOQ	< LOQ	6.25	12.5
β -pinene	2.21	0.221	6.25	12.5
3-Carene	< LOQ	< LOQ	6.25	12.5
Ocimene	0.943	0.0943	6.25	12.5
Delta-limonene	3.00	0.300	6.25	12.5
p-Cymene	0.374	0.0374	6.25	12.5
Eucalyptol	< LOQ	< LOQ	6.25	12.5
γ -Terpinene	< LOQ	< LOQ	6.25	12.5
Terpinolene	< LOQ	< LOQ	6.25	12.5
Linalool	0.833	0.0833	6.25	12.5
Isopulegol	0.420	0.0420	6.25	12.5
Geraniol	< LOQ	< LOQ	6.25	12.5
β -Caryophyllene	3.49	0.349	6.25	12.5
Humulene	1.39	0.139	6.25	12.5
cis-Nerolidol	0.390	0.0390	6.25	12.5
trans-Nerolidol	1.35	0.135	6.25	12.5
Nerolidol	1.74	0.174	6.25	12.5
Guaiol	0.955	0.0955	6.25	12.5
Caryophyllene oxide	0.450	0.0450	6.25	12.5
α -Bisabolol	1.24	0.124	6.25	12.5
Total Terpenes:	31.6	3.16		



NOTES: mg/L = ppm, $\mu\text{g/L}$ = ppb. "<" denotes "less than". ND is non-detectable quantity.

This report of analysis may not be modified in any way, or reproduced except in full, without written approval from Transparent Testing. Results as reported relate only to samples as submitted, unless specifically noted otherwise. Statements of conformity are reported as simple acceptance and do not apply any measurement of uncertainty values. Measurement uncertainty is available upon request. **The Limit of Detection (LOD)** is the lowest limit at which the method can detect an analyte's presence as greater than zero. **The Limit of Quantitation (LOQ)** is the lowest limit at which the method is accurately able to quantify an analyte. The Threshold is the limit at which the Oklahoma Medical Marijuana Authority (OMMA) deems medical marijuana and marijuana-infused products as safe for use.



PJLA
Testing
Accreditation # 115041
ISO/IEC 17025:2017 Accredited

Heavy Metals

PASS

Date Completed:

Instrument: Perkin Elmer Elan DRC II (ICP-MS)

Lab Tech: Marchel Crawford

Analyte	Result (ppm)	Threshold (ppm)	LOD (ppm)	LOQ (ppm)	Pass/Fail
Cadmium	ND	0.200	0.0500	0.100	Pass
Lead	< LOQ	0.500	0.125	0.250	Pass
Arsenic	ND	0.200	0.0500	0.100	Pass
Mercury	ND	0.100	0.0250	0.0500	Pass

Microbial Analysis

PASS

Date Completed:

Instrument: Agilent AriaMx (qPCR)

Lab Tech: Jarret Stites

Analyte	Result (CFU/g)	Threshold (CFU/g)	Pass/Fail
Escherichia Coli (E. Coli)	ND	1.00	Pass
Yeast/Mold	ND	10,000	Pass
Salmonella spp	ND	1.00	Pass
Aspergillus Niger	ND	1.00	Pass
Aspergillus Fumigatus	ND	1.00	Pass
Aspergillus Terreus	ND	1.00	Pass
Aspergillus Flavus	ND	1.00	Pass

Pesticide Profile

PASS

Date Completed:

Instrument: Agilent 1200 (HPLC) - Agilent 6460 (QQQ)

Lab Tech: Andrea Burrows

Analyte	Result (ppm)	LOQ (ppm)	Threshold (ppm)	Pass/Fail
Abamectin	ND	0.251	0.500	Pass
Azoxystrobin	ND	0.100	0.200	Pass
Bifenazate	ND	0.100	0.200	Pass
Etoxazole	ND	0.100	0.200	Pass
Imazalil	ND	0.100	0.200	Pass
Imidacloprid	ND	0.200	0.400	Pass
Malathion	ND	0.100	0.200	Pass
Myclobutanil	ND	0.100	0.200	Pass
Permethrin	ND	0.100	0.200	Pass
Spinosad	ND	0.100	0.200	Pass
Spiromesifen	ND	0.100	0.200	Pass
Spirotetramat	ND	0.100	0.200	Pass
Tebuconazole	ND	0.200	0.400	Pass

Foreign Materials

PASS

Date Completed:

Instrument: NA

Lab Tech: Lab Technician

Analyte	Pass/Fail	Comments
Foreign Materials	Pass	N/A

NOTES: mg/L = ppm, µg/L = ppb. "<" denotes "less than". ND is non-detectable quantity.

This report of analysis may not be modified in any way, or reproduced except in full, without written approval from Transparent Testing. Results as reported relate only to samples as submitted, unless specifically noted otherwise. Statements of conformity are reported as simple acceptance and do not apply any measurement of uncertainty values. Measurement uncertainty is available upon request. **The Limit of Detection (LOD)** is the lowest limit at which the method can detect an analyte's presence as greater than zero. **The Limit of Quantitation (LOQ)** is the lowest limit at which the method is accurately able to quantify an analyte. The Threshold is the limit at which the Oklahoma Medical Marijuana Authority (OMMA) deems medical marijuana and marijuana-infused products as safe for use.



PJLA
Testing
Accreditation # 115041
ISO/IEC 17025:2017 Accredited

Water Activity

PASS

Date Completed:

Instrument: Rotronic HygroLab6 HC2-AW

Lab Tech: Marchel Crawford

Analyte	Finding	Threshold	Pass/Fail
Water Activity	0.393	0.65	Pass

Moisture Content

PASS

Date Completed:

Instrument: NA

Lab Tech: Marchel Crawford

Analyte	Result (%)	Pass/Fail
Moisture Content	11.6	Pass



Approved By: Lab Director
Transparent Testing, LLC
01/31/2024

NOTES: mg/L = ppm, µg/L = ppb. "<" denotes "less than". ND is non-detectable quantity.

This report of analysis may not be modified in any way, or reproduced except in full, without written approval from Transparent Testing. Results as reported relate only to samples as submitted, unless specifically noted otherwise. Statements of conformity are reported as simple acceptance and do not apply any measurement of uncertainty values. Measurement uncertainty is available upon request. **The Limit of Detection (LOD)** is the lowest limit at which the method can detect an analyte's presence as greater than zero. **The Limit of Quantitation (LOQ)** is the lowest limit at which the method is accurately able to quantify an analyte. The Threshold is the limit at which the Oklahoma Medical Marijuana Authority (OMMA) deems medical marijuana and marijuana-infused products as safe for use.



PJLA
Testing
Accreditation #115041
ISO/IEC 17025:2017 Accredited