



510 N Sheridan Road Suite D | Tulsa, OK 74115 | (918) 520-3441 | OMMA #: LAAA-0095-HXSF

# Report of Analysis

Report Status: Final

**Client Name:** Heart and Soil, LLC  
**Address:** 1004 Hwy 54  
Guymon, OK 73942  
**Phone:** 806-782-9938  
**OMMA #:** GAAA-RC4Q-LIMD  
08/30/2023  
**Collected:**  
**Harvest/**  
**Production:** 10/04/2023  
**Special Notes:**

**Lab ID:** -7431  
**Strain:** Baby Yoda  
**Matrix:** Flower - Cured  
**Sample Batch #:** 1A40E01000147C1000003783  
**Sample Weight:** 10  
**Received:** 10/20/2023



## Summary of Results

Potency Profile	
Cannabinoid	Weight %
CBDV	ND
CBDA	< LOQ
CBN	ND
CBD	ND
CBGA	0.853
CBG	0.197
THCV	ND
Δ9-THC	0.242
Δ8-THC	ND
THCA	26.1
CBC	ND
<b>Total THC Delta-9(%)</b>	<b>23.1</b>
<b>Total THC Delta-9(mg/g)</b>	<b>231</b>
<b>Total Cannabinoids (%)</b>	<b>27.4</b>
<b>Total Cannabinoids (mg/g)</b>	<b>274</b>

Microbiological Profile	
All Results	Pass

Heavy Metals Screening	
All Results	Pass

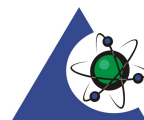
Moisture Content		
All Results	12.58 %	Pass

Terpene Profile	
Terpene	Result %
α-Pinene	0.0430
Camphene	< LOQ
Myrcene	0.0819
a-Terpinene	< LOQ
β-pinene	0.0628
3-Carene	< LOQ
Ocimene	0.0461
Delta-limonene	0.323
p-Cymene	< LOQ
Eucalyptol	< LOQ
γ-Terpinene	< LOQ
Terpinolene	< LOQ
Linalool	0.149
Isopulegol	0.0413
Geraniol	0.0423
β-Caryophyllene	0.470
Humulene	0.156
cis-Nerolidol	0.203
trans-Nerolidol	0.874
Nerolidol	1.08
Guaiol	< LOQ
Caryophyllene oxide	< LOQ
α-Bisabolol	0.0519
<b>Total Terpene %</b>	<b>2.64</b>

Pesticide Screening	
All Results	Pass

Filt and Foreign Materials Screening	
All Results	Pass

**NOTES:** mg/L = ppm, µg/L = ppb. "<" denotes "less than". ND is non-detectable quantity. This report of analysis may not be modified in any way, or reproduced except in full, without written approval from Transparent Testing. Results as reported relate only to samples as submitted, unless specifically noted otherwise. Measurement uncertainty is available upon request. **The Limit of Detection (LOD)** is the lowest limit at which the method can detect an analyte's presence as greater than zero. **The Limit of Quantitation (LOQ)** is the lowest limit at which the method is accurately able to quantify an analyte. The Threshold is the limit at which the Oklahoma Medical Marijuana Authority (OMMA) deems medical marijuana and marijuana-infused products as safe for use.



**PJLA**  
Testing  
Accreditation # 115041  
ISO/IEC 17025:2017 Accredited

# Potency

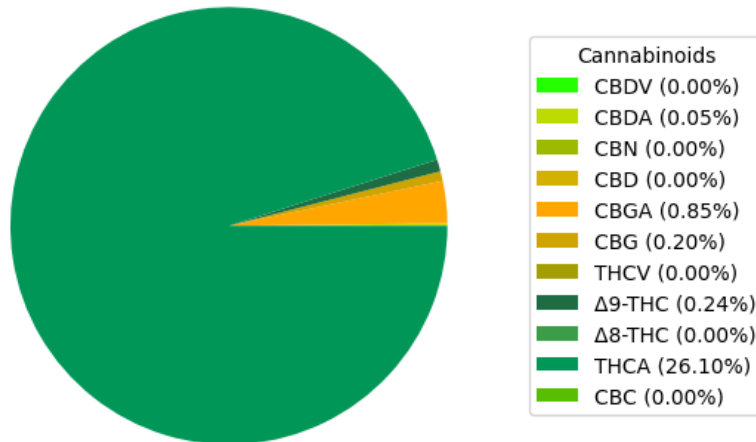
Date Completed: 10/20/2023

Instrument: Agilent 1100 (HPLC) - Agilent (DAD)

Lab Tech: Andrea Burrows

Analyte	Weight (%)	Result (mg/g)	LOQ (mg/g)
CBDV	ND	ND	0.650
CBDA	< LOQ	< LOQ	0.650
CBN	ND	ND	0.650
CBD	ND	ND	0.650
CBGA	0.853	8.53	0.650
CBG	0.197	1.97	0.650
THCV	ND	ND	0.650
Δ9-THC	0.242	2.42	0.650
Δ8-THC	ND	ND	0.650
THCA	26.1	261	0.650
CBC	ND	ND	0.650
<b>Total CBD</b>	< LOQ	< LOQ	
<b>Total THC</b>	23.1	231	

Cannabinoid Distribution (%)



**NOTES:** mg/L = ppm, µg/L = ppb. "<" denotes "less than". ND is non-detectable quantity. This report of analysis may not be modified in any way, or reproduced except in full, without written approval from Transparent Testing. Results as reported relate only to samples as submitted, unless specifically noted otherwise. Measurement uncertainty is available upon request. **The Limit of Detection (LOD)** is the lowest limit at which the method can detect an analyte's presence as greater than zero. **The Limit of Quantitation (LOQ)** is the lowest limit at which the method is accurately able to quantify an analyte. The Threshold is the limit at which the Oklahoma Medical Marijuana Authority (OMMA) deems medical marijuana and marijuana-infused products as safe for use.



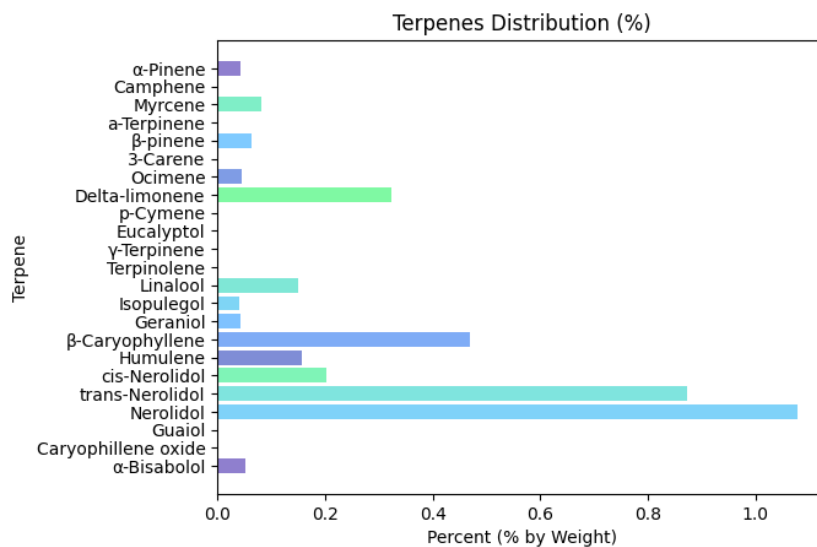
# Terpenoid

Date Completed: 10/21/2023

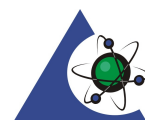
Instrument: HP 6890 (GC) - Agilent (FID)

Lab Tech: Andrea Burrows

Analyte	Result (mg/g)	Result (%)	LOD (µg/mL)	LOQ (µg/mL)
α-Pinene	0.430	0.0430	6.25	12.5
Camphene	< LOQ	< LOQ	6.25	12.5
Myrcene	0.819	0.0819	6.25	12.5
a-Terpinene	< LOQ	< LOQ	6.25	12.5
β-pinene	0.628	0.0628	6.25	12.5
3-Carene	< LOQ	< LOQ	6.25	12.5
Ocimene	0.461	0.0461	6.25	12.5
Delta-limonene	3.23	0.323	6.25	12.5
p-Cymene	< LOQ	< LOQ	6.25	12.5
Eucalyptol	< LOQ	< LOQ	6.25	12.5
γ-Terpinene	< LOQ	< LOQ	6.25	12.5
Terpinolene	< LOQ	< LOQ	6.25	12.5
Linalool	1.49	0.149	6.25	12.5
Isopulegol	0.413	0.0413	6.25	12.5
Geraniol	0.423	0.0423	6.25	12.5
β-Caryophyllene	4.70	0.470	6.25	12.5
Humulene	1.56	0.156	6.25	12.5
cis-Nerolidol	2.03	0.203	6.25	12.5
trans-Nerolidol	8.74	0.874	6.25	12.5
Nerolidol	10.8	1.08	6.25	12.5
Guaiol	< LOQ	< LOQ	6.25	12.5
Caryophyllene oxide	< LOQ	< LOQ	6.25	12.5
α-Bisabolol	0.519	0.0519	6.25	12.5
<b>Total Terpenes:</b>	<b>26.4</b>	<b>2.64</b>		



**NOTES:** mg/L = ppm, µg/L = ppb. "<" denotes "less than". ND is non-detectable quantity. This report of analysis may not be modified in any way, or reproduced except in full, without written approval from Transparent Testing. Results as reported relate only to samples as submitted, unless specifically noted otherwise. Measurement uncertainty is available upon request. **The Limit of Detection (LOD)** is the lowest limit at which the method can detect an analyte's presence as greater than zero. **The Limit of Quantitation (LOQ)** is the lowest limit at which the method is accurately able to quantify an analyte. The Threshold is the limit at which the Oklahoma Medical Marijuana Authority (OMMA) deems medical marijuana and marijuana-infused products as safe for use.



**PJLA**  
Testing  
Accreditation # 115041  
ISO/IEC 17025:2017 Accredited

# Heavy Metals

PASS

Date Completed: 10/25/2023

Instrument: Perkin Elmer Elan DRC II (ICP-MS)

Lab Tech: Marchel Crawford

Analyte	Result (ppm)	Threshold (ppm)	LOD (ppm)	LOQ (ppm)	Pass/Fail
Cadmium	< LOQ	0.200	0.0500	0.100	Pass
Lead	< LOQ	0.500	0.125	0.250	Pass
Arsenic	< LOQ	0.200	0.0500	0.100	Pass
Mercury	ND	0.100	0.0250	0.0500	Pass

# Microbial Analysis

PASS

Date Completed:

Instrument: Agilent AriaMx (qPCR)

Lab Tech: Ryan Bales

Analyte	Result (CFU/g)	Threshold (CFU/g)	Pass/Fail
Escherichia Coli (E. Coli)	ND	1.00	Pass
Yeast/Mold	ND	10,000	Pass
Salmonella spp	ND	1.00	Pass
Aspergillus Niger	ND	1.00	Pass
Aspergillus Fumigatus	ND	1.00	Pass
Aspergillus Terreus	ND	1.00	Pass
Aspergillus Flavus	ND	1.00	Pass

# Pesticide Profile

PASS

Date Completed:

Instrument: Agilent 1200 (HPLC) - Agilent 6460 (QQQ)

Lab Tech: Andrea Burrows

Analyte	Result (ppm)	LOQ (ppm)	Threshold (ppm)	Pass/Fail
Abamectin	ND	0.251	0.500	Pass
Azoxystrobin	ND	0.100	0.200	Pass
Bifenazate	ND	0.100	0.200	Pass
Etoxazole	ND	0.100	0.200	Pass
Imazalil	ND	0.100	0.200	Pass
Imidacloprid	ND	0.200	0.400	Pass
Malathion	ND	0.100	0.200	Pass
Myclobutanil	ND	0.100	0.200	Pass
Permethrin	ND	0.100	0.200	Pass
Spinosad	ND	0.100	0.200	Pass
Spiromesifen	ND	0.100	0.200	Pass
Spirotetramat	ND	0.100	0.200	Pass
Tebuconazole	ND	0.200	0.400	Pass

# Foreign Materials

PASS

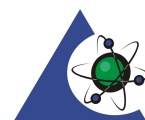
Date Completed:

Instrument: NA

Lab Tech: Lab Technician

Analyte	Pass/Fail	Comments
Foreign Materials	Pass	N/A

NOTES: mg/L = ppm, µg/L = ppb. "<" denotes "less than". ND is non-detectable quantity. This report of analysis may not be modified in any way, or reproduced except in full, without written approval from Transparent Testing. Results as reported relate only to samples as submitted, unless specifically noted otherwise. Measurement uncertainty is available upon request. The Limit of Detection (LOD) is the lowest limit at which the method can detect an analyte's presence as greater than zero. The Limit of Quantitation (LOQ) is the lowest limit at which the method is accurately able to quantify an analyte. The Threshold is the limit at which the Oklahoma Medical Marijuana Authority (OMMA) deems medical marijuana and marijuana-infused products as safe for use.



PJLA  
Testing  
Accreditation # 115041  
ISO/IEC 17025:2017 Accredited

# Water Activity

PASS

Date Completed:

Instrument: Rotronic HygroLab6 HC2-AW

Lab Tech: Marchel Crawford

Analyte	Finding	Threshold	Pass/Fail
Water Activity	0.499	0.65	Pass

# Moisture Content

PASS

Date Completed:

Instrument: NA

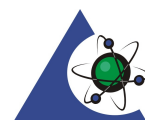
Lab Tech: Marchel Crawford

Analyte	Result (%)	Pass/Fail
Moisture Content	12.6	Pass



Approved By: Lab Director  
Transparent Testing, LLC  
10/27/2023

**NOTES:** mg/L = ppm, µg/L = ppb. "<" denotes "less than". ND is non-detectable quantity. This report of analysis may not be modified in any way, or reproduced except in full, without written approval from Transparent Testing. Results as reported relate only to samples as submitted, unless specifically noted otherwise. Measurement uncertainty is available upon request. **The Limit of Detection (LOD)** is the lowest limit at which the method can detect an analyte's presence as greater than zero. **The Limit of Quantitation (LOQ)** is the lowest limit at which the method is accurately able to quantify an analyte. The Threshold is the limit at which the Oklahoma Medical Marijuana Authority (OMMA) deems medical marijuana and marijuana-infused products as safe for use.



**PJLA**  
Testing  
Accreditation #115041  
ISO/IEC 17025:2017 Accredited