



ARTEMIS

SELECT HUNTS



Kalahari

THE ART OF ETHICAL HUNTING



AN AUTHENTIC EXPERIENCE IN THE HEART OF SOUTH AFRICA



Nestled in one of the most genuine and wild regions of northern South Africa, this exclusive camp has been designed to offer a truly immersive safari experience, blending comfort, nature, and top-tier African hospitality.

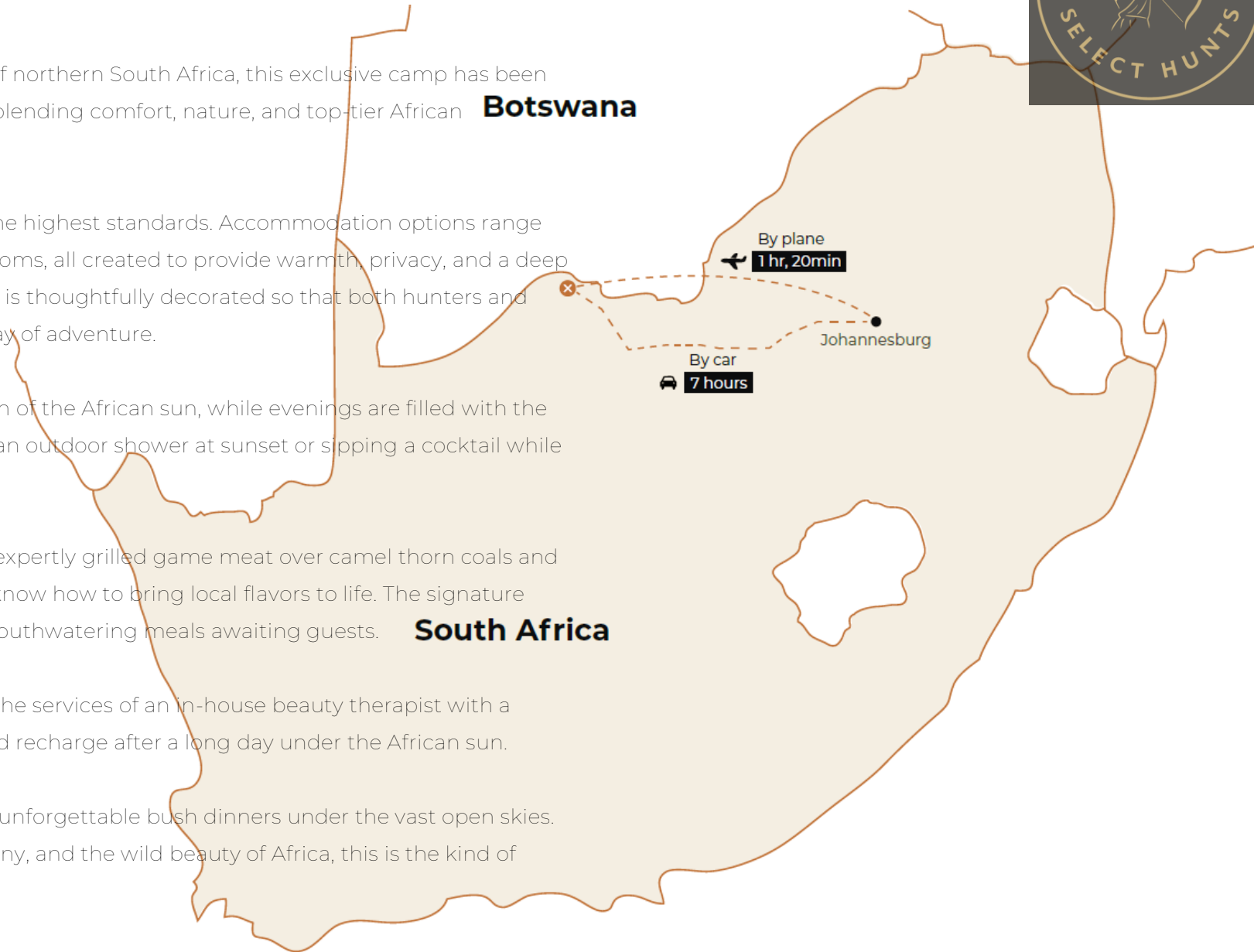
The camp has been continuously upgraded to meet the highest standards. Accommodation options range from private en-suite safari tents to thatched luxury rooms, all created to provide warmth, privacy, and a deep connection with the natural surroundings. Each space is thoughtfully decorated so that both hunters and their companions can unwind in comfort after a full day of adventure.

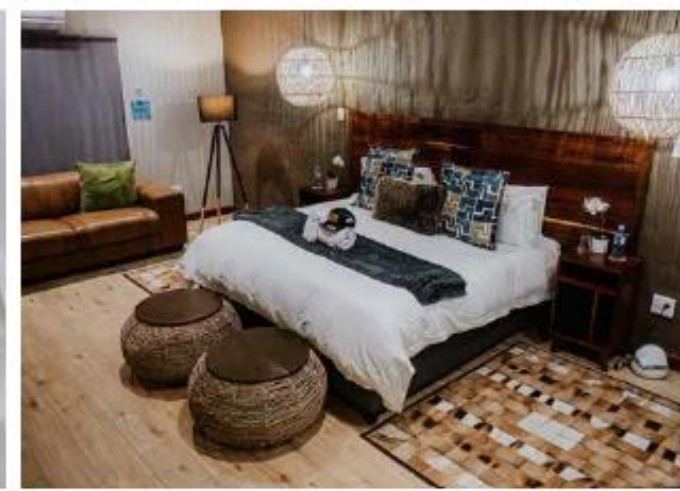
Here, mornings begin with birdsong and the soft touch of the African sun, while evenings are filled with the vibrant sounds of the bush. There's nothing quite like an outdoor shower at sunset or sipping a cocktail while soaking in the golden horizon.

The cuisine is one of the highlights of the experience: expertly grilled game meat over camel thorn coals and traditional South African dishes crafted by chefs who know how to bring local flavors to life. The signature crumbed game schnitzel is just one example of the mouthwatering meals awaiting guests.

To complete the sense of well-being, the camp offers the services of an in-house beauty therapist with a variety of treatments designed to help guests relax and recharge after a long day under the African sun.

And finally, one of the crown jewels of the experience: unforgettable bush dinners under the vast open skies. A magical evening filled with great food, warm company, and the wild beauty of Africa, this is the kind of memory that stays with you for a lifetime.











PRICE LIST 2025

ALL PRICES ARE IN US DOLLARS.

Aardwolf	\$2500	Gemsbuck (Oryx)	\$1200	Rhino	POR
African Wild Cat	\$1500	Golden Gemsbuck	\$4000	Rhino (black)	POR
Baboon	Free	Giraffe	\$4500	Roan	\$5500
Black Wildebeest	\$1200	Hippo	POR	Mountain Rheedbuck (Eastern Cape)	POR
Blesbuck (common)	\$650	Impala	\$650	Vaal Rheedbuck (Eastern Cape)	POR
Blesbuck (white)	\$700	Black Impala	\$2500	Common Rheedbuck (Eastern Cape)	POR
Brown Hyena	\$3500	White Flank Impala	\$3500	Sable	\$5000
Blue Wildebeest	\$1000	Indian Water Buffalo	\$6500	Springbuck (common)	\$650
Bushbuck (Eastern Cape)	POR	Kudu	\$3500	Springbuck (black)	\$900
Golden Wildebeest	\$4000	Leopard	POR	Springbuck (white)	\$900
King Wildebeest	\$6500	Lion	POR	Springbuck (copper)	\$900
Cape Buffalo	POR	Lioness	POR	Scimitar Oryx	\$3000
Caracal	\$1500	Lion (white)	POR	Steenbuck	\$1000
Crocodile	POR	Nyala	\$2500	Tsessebe	\$2500
Duiker	\$400	Ostrich	\$800	Waterbuck	\$2500
Eland	\$3500	Porcupine	\$800	Warthog	\$500
Elephant	POR	Red Hartbeest	\$1200	Hartmans Mountain Zebra	\$2000
Fallow deer	\$1500	Red Lechwe	\$3000	Burchell Zebra	\$1200

DAILY RATES

Big Five	\$450
Hunter	\$400
Observer	\$200



ARTEMIS
SELECT HUNTS

Safari Packages



PACKAGE 1	PACKAGE 2	PACKAGE 3	PACKAGE 4	PACKAGE 5	PACKAGE 6
Blue Wildebeest Blesbuck or Springbuck Warthog	Zebra Blue Wildebeest Warthog Springbuck Steenbuck	Kudu Warthog Impala Blue Wildebeest Duiker Blesbuck	Roan Sable Steenbuck Duiker Warthog	Buffalo Kudu Tsessebe	Lion male Kudu Gemsbuck (Oryx) Duiker Impala Warthog
5 DAYS All inclusive \$3800	7 DAYS All inclusive \$5500	7 DAYS All inclusive \$7000	7 DAYS All inclusive \$10 500	7 DAYS All inclusive \$17 000	10 DAYS All inclusive \$22 000



PRICES INCLUDE

- Luxurious accommodation
- All beverages and meals
- Special requirements will be catered for
- Daily laundry and cleaning service
- Service of a Professional hunting guide, tracker, driver and skinner
- Preparation of trophies and delivery to local taxidermist
- Service of a 4x4 Land Cruiser hunting vehicle
- A cooler box on all hunting vehicles

PRICES EXCLUDE

- Trophy fees for game wounded or lost
- Accommodation expenses prior and after the hunt
- Hotel and accommodation prior and after the safari
- Charter flight from and to Oliver Tambo
- Airport taxes and transport cost
- Import and permit fees required by other countries
- Shipping of trophies and taxidermist bills
- Any sightseeing
- Local and International calls and internet
- Medical expenses and insurance
- 15% Vat on daily rates and wounded animals
- No vat on exported animals
- All DVD and recordings

Credit card machine is available in camp, 3% on total amount will be added as a credit card charge. Visa and Mastercard only.

TERMS OF SAFARI

- A deposit of the total hunting costs is payable upon confirmation of booking.
- Full payment of the balance of the hunting costs is due 10 days prior to the hunt.
- Cancellations made 3 months prior to the hunt will be refunded, less a 15% administration fee on the total deposit.
- No refund of the deposit will be made if the client cancels within 3 months of the scheduled start date of the hunt, unless the hunt is rebooked.
- All prices on daily rates and on the hunting price list are subject to change.
- Payments not made in advance must be settled in cash, by credit card machine, or via internet transfer before departure from the lodge.
- All payments must be completed before departure from the lodge.
- If the client has the opportunity to hunt an animal included in the package but misses or chooses not to take the shot, it will be considered an opportunity and will not be refunded.



RIFLE

You'll find a unique blend of plains game and Big 5 hunting. The recommended all-round rifle is the reliable .375 H&H. If you decide to bring two weapons, consider a .308 for long-range shooting and a .416 or .470 for elephants and rhinos.

We also offer the option to use one of our rifles. You only need to cover the cost of ammunition for the safari.

Temporary import and export permits for rifles are \$150.


BOW HUNTING

We offer a unique experience. Our blinds provide the perfect vantage point to patiently await your trophy, surrounded by the beauty of diverse wildlife and vibrant birdlife.

Additionally, for those seeking a more active approach, we offer a walk-and-stalk experience. To make the most of our wide array of species, we suggest bringing a bow ranging from 50 lbs to 90 lbs. Our professional hunters will guide you with arrow placement and provide valuable insights into the various species you encounter.

THINGS TO DO

- Photography
- Sightseeing on the property
- Luxury spa on the site
- Relaxing at the swimming pool
- Darts
- Sleeping under the open skies

 **Free Wi-Fi available**





ARTEMIS
SELECT HUNTS



THE ART OF ETHICAL HUNTING

READY FOR THE HUNT OF A LIFETIME?

Contact us today to secure your place at **Kalahari**.

Pablo Piqueras

Email: contact@artemisselecthunts.com

Whatsapp  : +34 667 777 716 USA /  : +1 (307) 218 2187

www.artemisselecthunts.com

@artemisselecthunts

