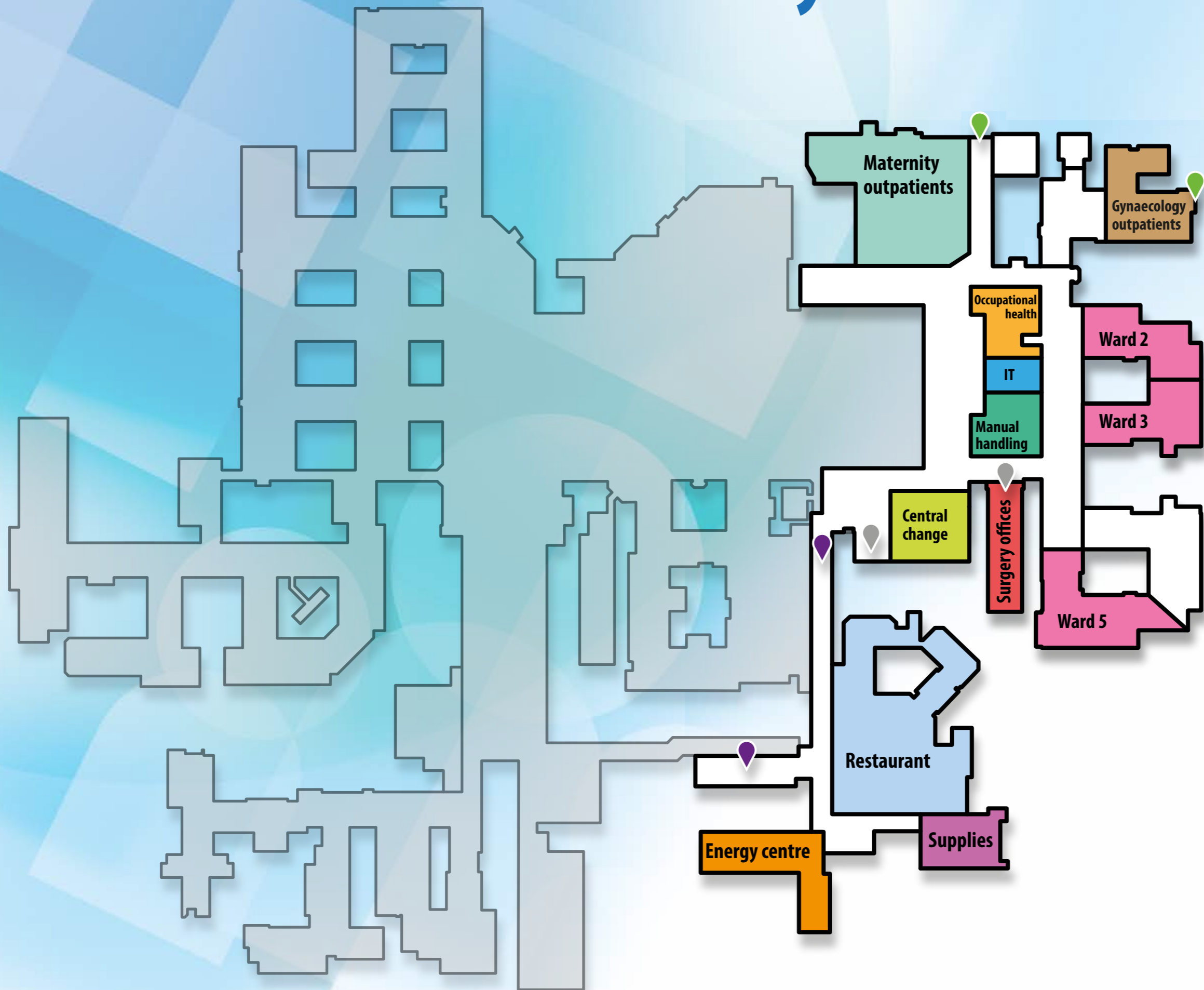


North Tyneside General Hospital

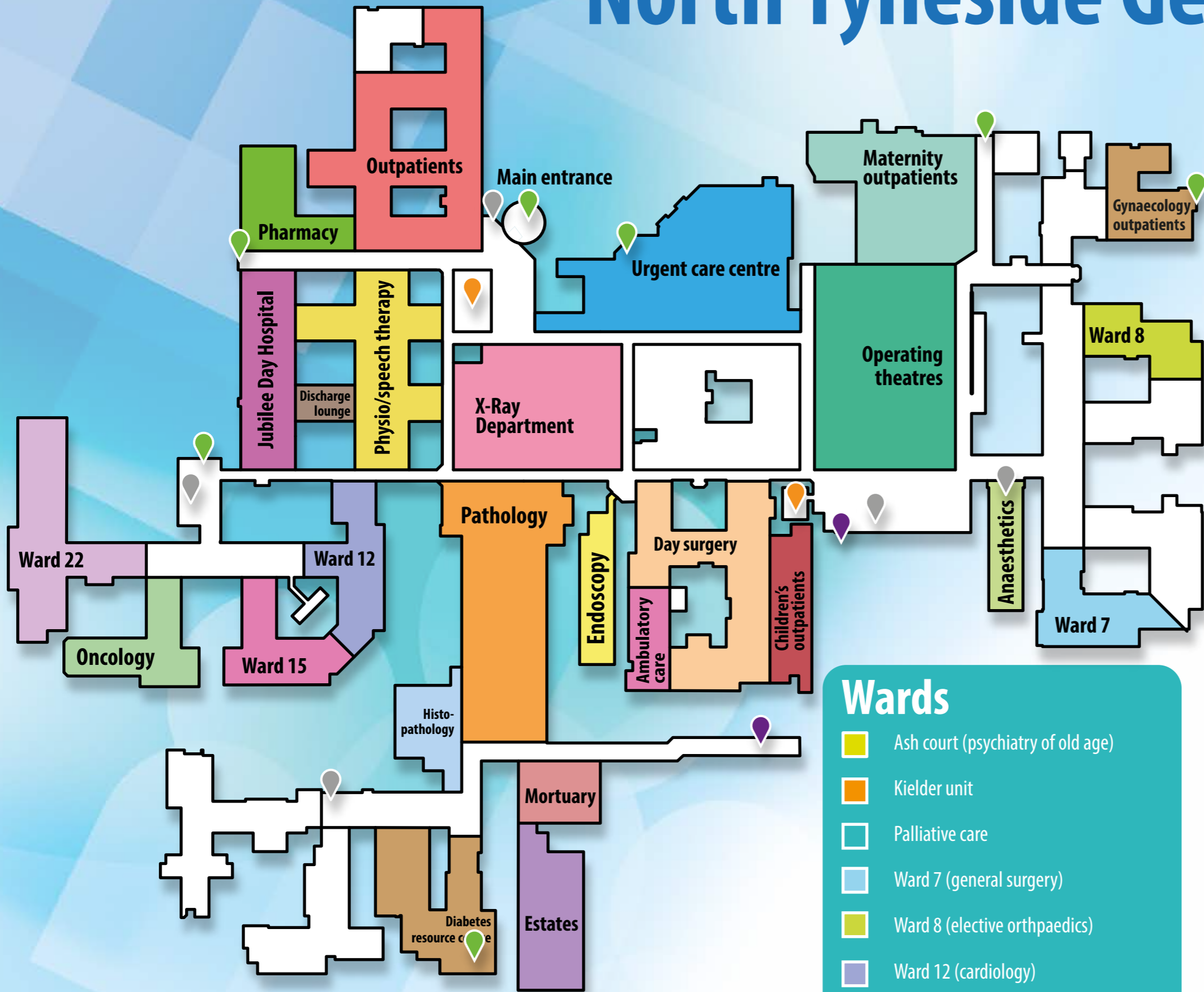
Lower ground



Key

- Central change
- Energy centre
- Gynaecology outpatients
- IT
- Manual handling
- Maternity outpatients
- Occupational health
- Restaurant
- Supplies
- Surgery offices
- Ward 2 (acute elderly medicine)
- Ward 3 (elderly rehabilitation)
- Ward 5 (ortho-geriatrics)
- Entrance point
- Lifts and stairs
- Ramp up to ground level

North Tyneside General Hospital Ground floor



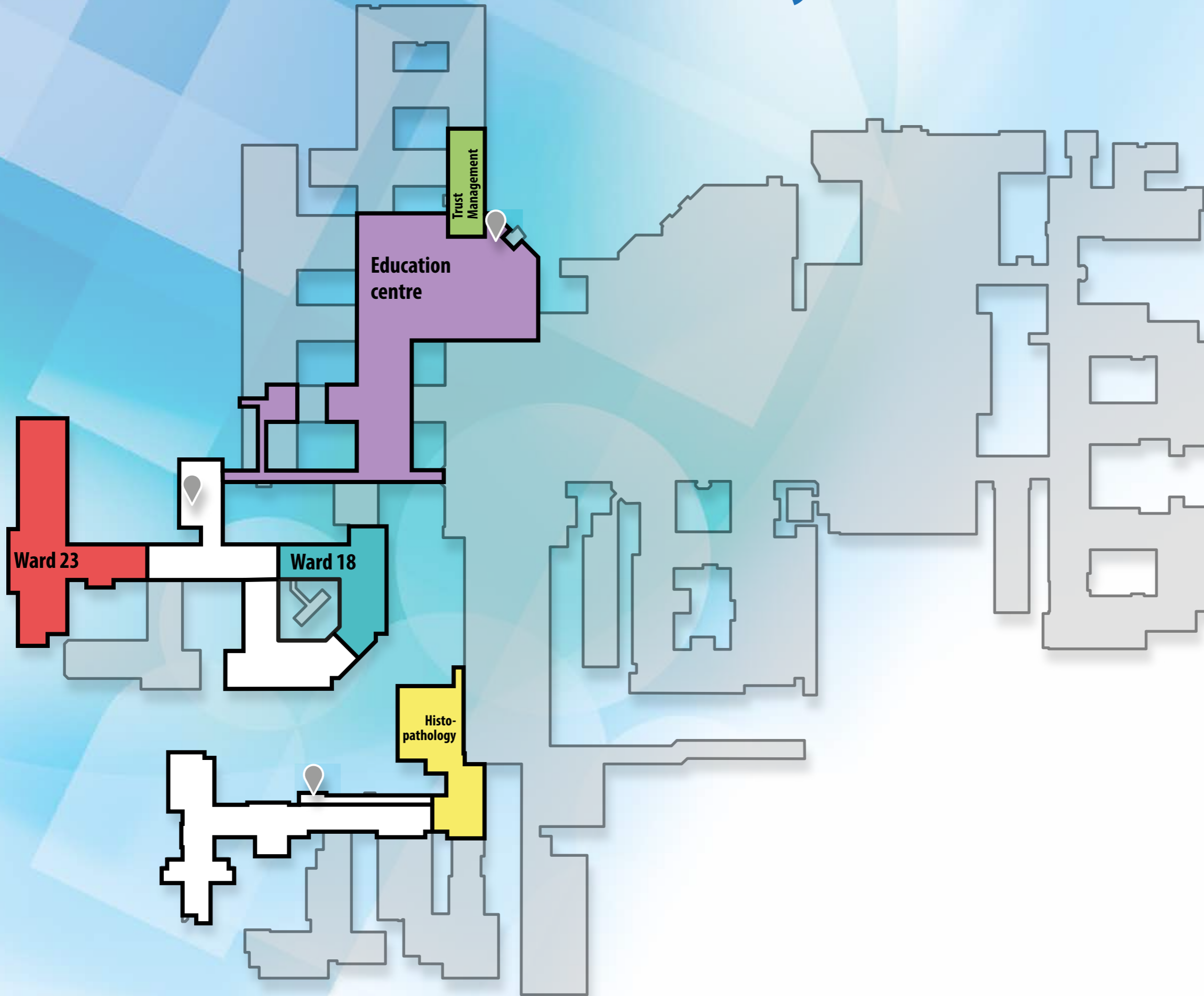
Key

- | | |
|--------------------------|-----------------------|
| Ambulatory care | Pathology |
| Anaesthetics | Pharmacy |
| Children's outpatients | Physio/speech therapy |
| Day surgery | Urgent care centre |
| Diabetes resource centre | X-ray |
| Discharge lounge | Entrance point |
| Endoscopy | Lifts and stairs |
| Estates | HVS cafes |
| Gynaecology outpatients | Ramp to restaurant |

- ## Wards
- Ash court (psychiatry of old age)
 - Kielder unit
 - Palliative care
 - Ward 7 (general surgery)
 - Ward 8 (elective orthopaedics)
 - Ward 12 (cardiology)
 - Ward 15 (gastroenterology)
 - Ward 22 (stroke)

North Tyneside General Hospital

First floor



Key

- Education centre
- Histopathology
- Trust management
- Ward 18 (respiratory medicine)
- Ward 23 (elderly rehabilitation)
- Lifts and stairs