

STROBE LIGHT & LOUD SPEAKER ACTIVE DETERRENCE WITH HANWHA CAMERAS



Action-CS is a leading manufacturer of integrated security solutions, specializing in strobe lights and loudspeaker assemblies that seamlessly integrate with security cameras for a comprehensive active deterrent system.

While surveillance cameras are a crucial component of any security system, they are often reactive in nature and only provide information after a crime has been committed. With an Action-CS partnership, Hanwha cameras can now use Active Deterrence as an aim to stop crimes before they start.

KEY FEATURES OF ACTIVE DETERRENCE UNITS

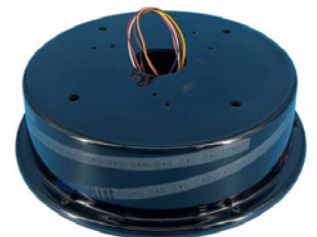
Exterior

- IP34 weather rating & vandal resistant
- Rated for -40 to 120 degrees
- 5W strobe lights (red & blue)
- Single Ethernet cable
- 60 watt speakers (optional 100-watt horn)
- Omni directional microphone



Interior

- 3W strobe lights (red & blue)
- Single Ethernet cable
- 60 watt speakers (optional 100-watt horn)
- Omni directional microphone
- 360 degrees of lights & sound



THE ACTION-CS HORN CONVERTS OUR EXTERIOR ADU INTO A SOUND POWERHOUSE

Drive up to three (3) cameras and the Action-CS Horn with a single Ethernet cable. With clear sound propagation and solid performance, you can expect sound levels of 75DB at 90ft.



ACTION-CS ADU

75 DB
@ 25 FT

50 FEET

Performance Comparison
with standard Exterior
Active Deterrent Unit

ACTION-CS
HORN

75 DB
@ 90 FT

200 FEET



COMPATIBILITY

Action-CS ADU units have been engineered for the plug-and-play upgrade of all Hanwha existing surveillance cameras to become active deterrent cameras.

ACTION-CS ULTRA BOARD KEY FEATURES

Core Features

- (2) 90-watt downstream Ethernet ports
- Single Ethernet cable with 180-watt Action-CS injector
- Onboard 10/100 switch

Simultaneous Operation

- 60-watt camera
- 100-watt Action-CS Horn
- Audio card (SPA-D1000)
- Action-CS 5-watt strobe lights



LIGHT POLE POWER KITS

- Utilizes 120V-277V pole power to charge the battery at night, operating on battery power during the day
- Any camera or PTP bridge or cellular modem
- Simplified deployment & significantly lower cost than solar trailers
- UL listed
- Modular in design & scalable



CELLULAR BACK BOX

The Action-CS Cellular Back Kit & Tri-Head solution enable rapid deployment of a turnkey crime deterrence system anywhere, eliminating concerns about power or data connectivity. This simplified deployment of cameras is ideal for trailer and construction sites.

Includes Teltonika 5G modem, thermal controlled fan, and power conversion from 120VAC to 12VDC. Optional: 24V input.

Requires power and SIM card for service.

Modular in design and scalable and designed to use the Action-CS ADU and assemblies (NOT INCLUDED).

Space to mount NVR if desired.



EASY INSTALLATION & DEPLOYMENT

Simply connect to current power at the pole 120/240/277 VAC

01

Run a single Ethernet cable to connect the Crime Deterrence System

02

Point and aim the Point-to-Point bridge back to the building for connectivity or provide a SIM card for cellular.

03

Aim your cameras and test your system!

04

ACTION-CS COMPETITIVE ADVANTAGE



First solution to retrofit active deterrence to existing cameras



Compatible with most surveillance cameras on the market



Priced at the optimal point in the market



Protected intellectual property — patents in process



No rewiring or complex integration