

# 70s Jukebox Countdown

## Stage Plot

### Microphones

- Mic up Drum Set as normal (can use our IEM Bass Drum mic)
- Four (4) Wireless for Singers (across front)
- One (1) mic for bass vocals (cabled)
- One (1) mic Guitar 1 amp

### DI Boxes (Radial D2)

- Backing tracks Channel One
- Keyboard track Channel Two

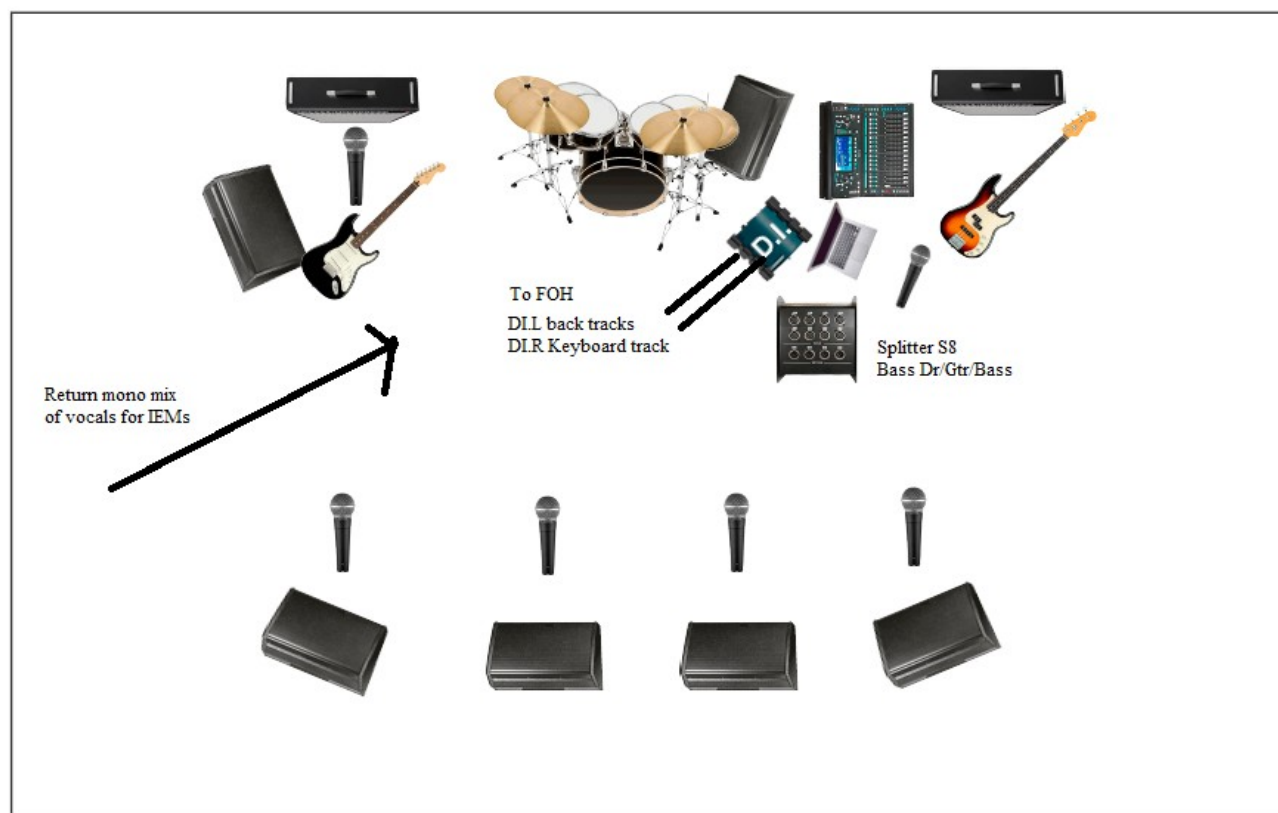
### Floor Monitors

- One (1) Guitar (*as BU 4 new IEMs*)
- One (1) Drums (*as BU 4 new IEMs*)
- Four (4) Singers

### Return from FOH to our IEM

- Mono vocal mix (sent to our in-ear monitors)

70s Jukebox Countdown Stage Plot

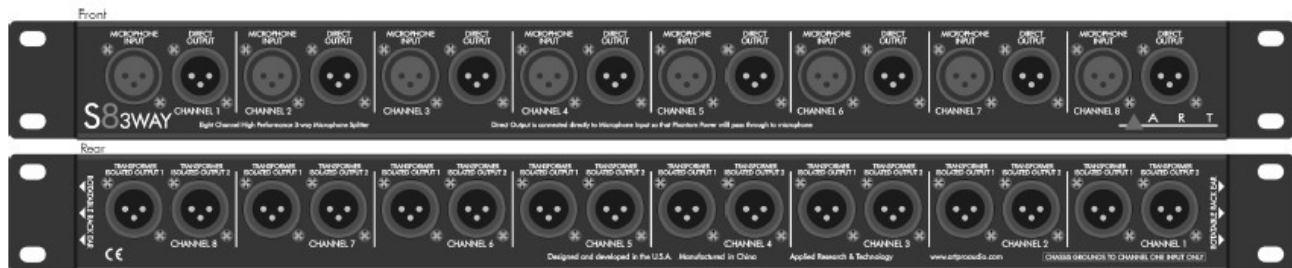


## FOH signal coming from the splitter for...

1. Bass Drum
2. Guitar
3. Bass

# ART S83WAY

## Eight Channel Three-Way High Performance Microphone Splitter



S8-3WAY eight channel three way microphone splitter is ideal for live sound, fixed install, recording, and broadcast applications where microphone and XLR balanced line level input signals have to go to multiple mix locations.

Each channel provides one XLR input, one XLR direct output, with two additional transformer isolated XLR outputs for a total of 3 balanced outputs from each microphone input signal.

Typical uses would include sending 8 direct signals through the S8-3WAY to a main or FOH (Front Of House) mixer, with additional isolated feeds going to a monitor mix station, remote recording desk, or broadcast feed. The direct outputs pass phantom power from the main mixer to the microphones for use with condenser microphones.

### Features

- The same high quality musical sounding transformer design used in the popular ART S8
- XLR input, one XLR direct output, with two additional transformer isolated XLR outputs
- High quality passive interface
- 19-inch 1U-high rack mount with rugged, fully shielded black all-steel enclosure
- Reversible rack ears for added system flexibility
- Three year warranty