

Pickup Tool Boxes by:



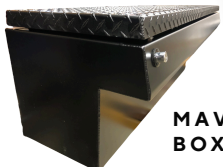
Includes Sliding Tray

Mavericorp pickup boxes feature THREE zero clearance "Aurora" hinges and a robust stainless steel heavy duty "MavLatch" system. Any box with a shelf includes an ice-tray style sliding tray. Toolboxes are made from 5052-H32 Aluminum Alloy. Choose a mill finish .090" thick formed flange aluminum body with an 1/8 thick mill finish aluminum Lid for the best value with all the craftsmanship and quality of a polished box. All pickup boxes with the "MavLatch" system are fitted with a "Lockrod Cover" to guard the lock system so contents are less likely to shift & jam things up!

Many pickup toolbox shapes and finishes are available for your truck.



ALL MILL FINISH ALUMINUM SHOWN

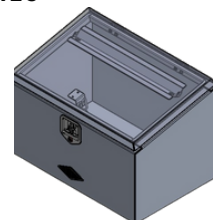


MAVERICORP GBX, GUN BOXES (12" AND 16"WIDE)



MAVERICORP XLP, LOW PROFILE BOXES (3" ABOVE RAIL)

MAVERICORP FRONT OPEN BOXES <-



MAVERICORP SLOPE TOP BOXES ->



(360) 518-3752 | MAVERICORP.COM