



Honda CBRF4i Undertail 2001-03

Installation instructions

NOTE:

While checking different tail sections for this bike, we noticed that the holes were located in different heights. So, in order to guarantee a perfect fit, we have marked the holes in the undertail but we have not predrilled them.

You will have to drill the holes once your undertail is aligned.



Honda CBRF4i Undertail 2001-03

Installation instructions

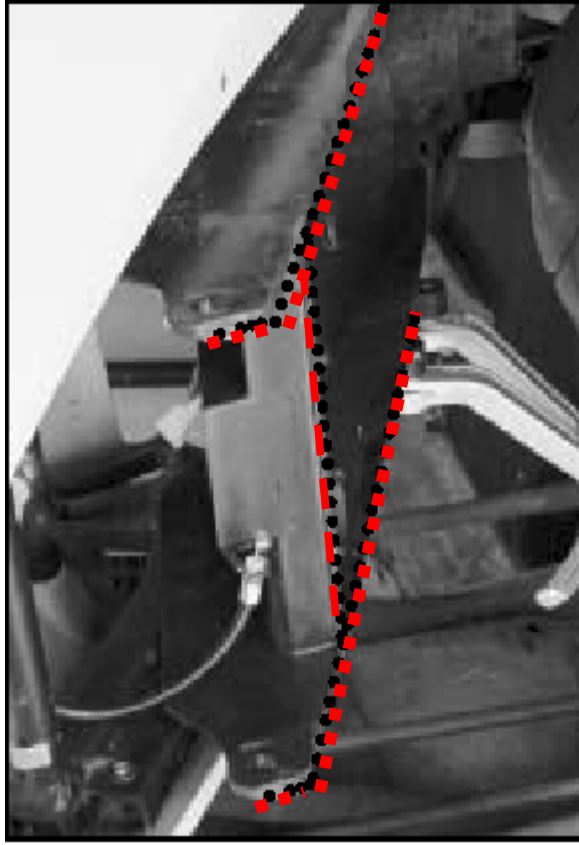
- 1-Remove the tail section (keep the bolts, washers and plastic rivets for reinstallation of the tail section later)
- 2-Disconnect the brake light (with all mounting grommets and washers) and remove:
 - license plate
 - Turn signals
 - Key lock (with clip)

Move all wires out of the cutting areas

- 3-Remove the two bolts at the rear end of the stock fender (inside glove box) to allow the end to hang down for cutting.



Honda CBRF4i Undertail 2001-03 Installation instructions

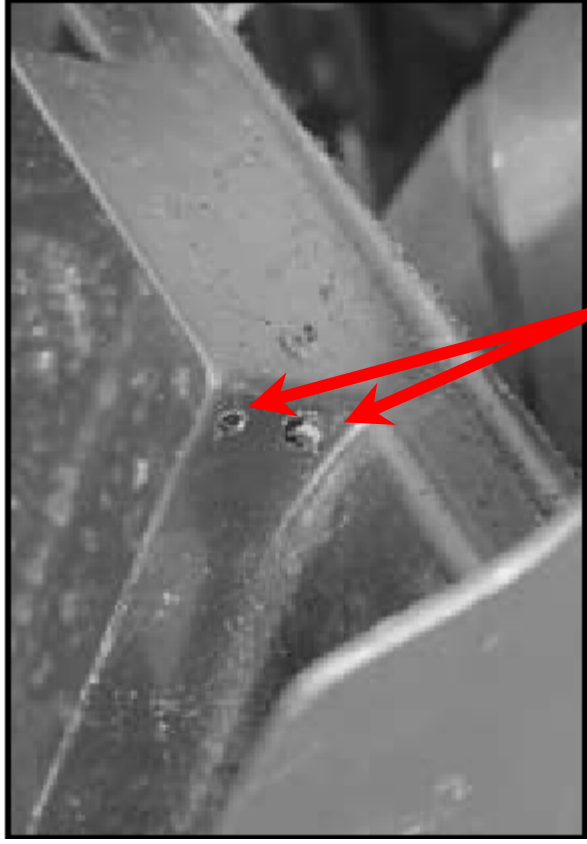


4-Using a Dremel or hand saw, remove the plastic shown in the pictures.
Be patient while doing the cutting so you don't cut away any more plastic than necessary)



Honda CBRF4i Undertail 2001-03

Installation instructions



5-Drill 2 holes (using a 10/32" bit) for the installation of the lock cable mounting arm.

Use the small screw from the beginning and the screw (provided). Proceed to mount the lock arm as shown.



Honda CBRF4i Undertail 2001-03

Installation instructions



- 6-Relocate relays to outside of framing using 2 zip ties (provided)
- 7-Install the license plate bracket. Once positioned, mark and drill the holes.
Use hardware provided for the license plate bracket.
- 8-Remount glove box using stock hardware. Remount tail section.
Do not tight anything yet!
- 9-Attach lock cable to lock clip as shown in picture



Honda CBRF4i Undertail 2001-03

Installation instructions



10- Insert lock into Undertail using stock lock mounting clip. Make sure the lock is in the correct position with the lock cable arm to function properly.

11-Insert undertail, once aligned, drill the holes on that side (left side first), then right side. Be careful not to scratch the undertail during the process. Use your stock plastic rivets to secure undertail. Attach lock cable to lock, check movement, adjust if necessary.

Tighten all hardware on tail section. Then attach seat.

You are done!