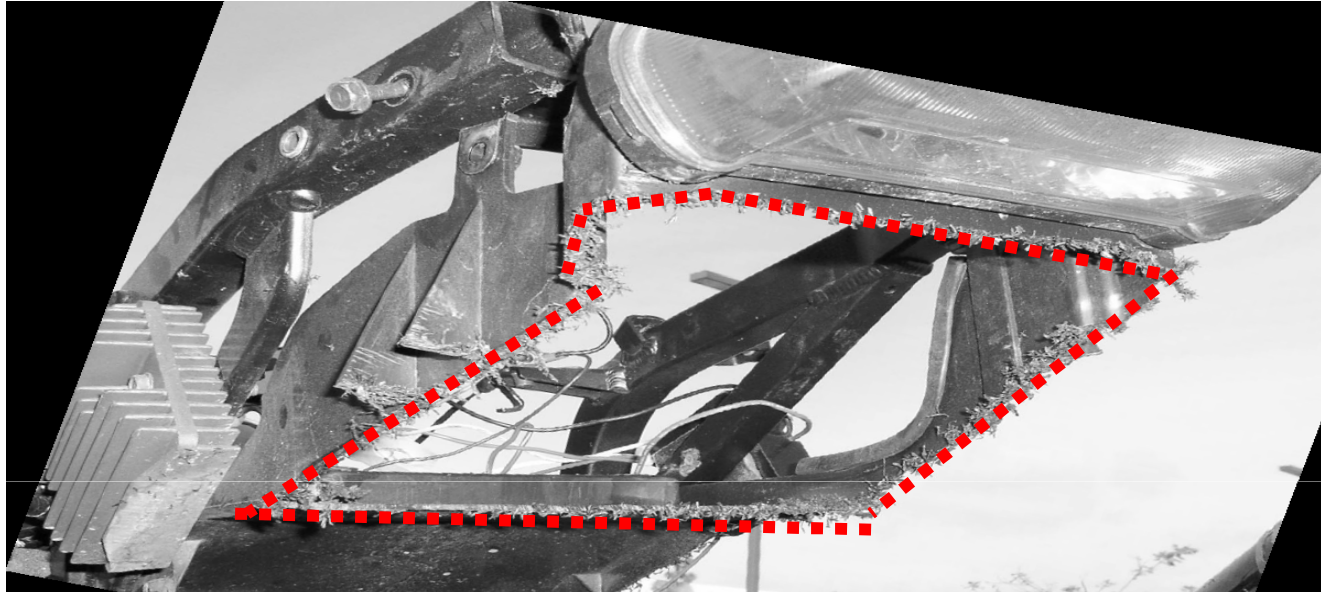




KAWASAKI 2000-05 ZX12R

Undertail

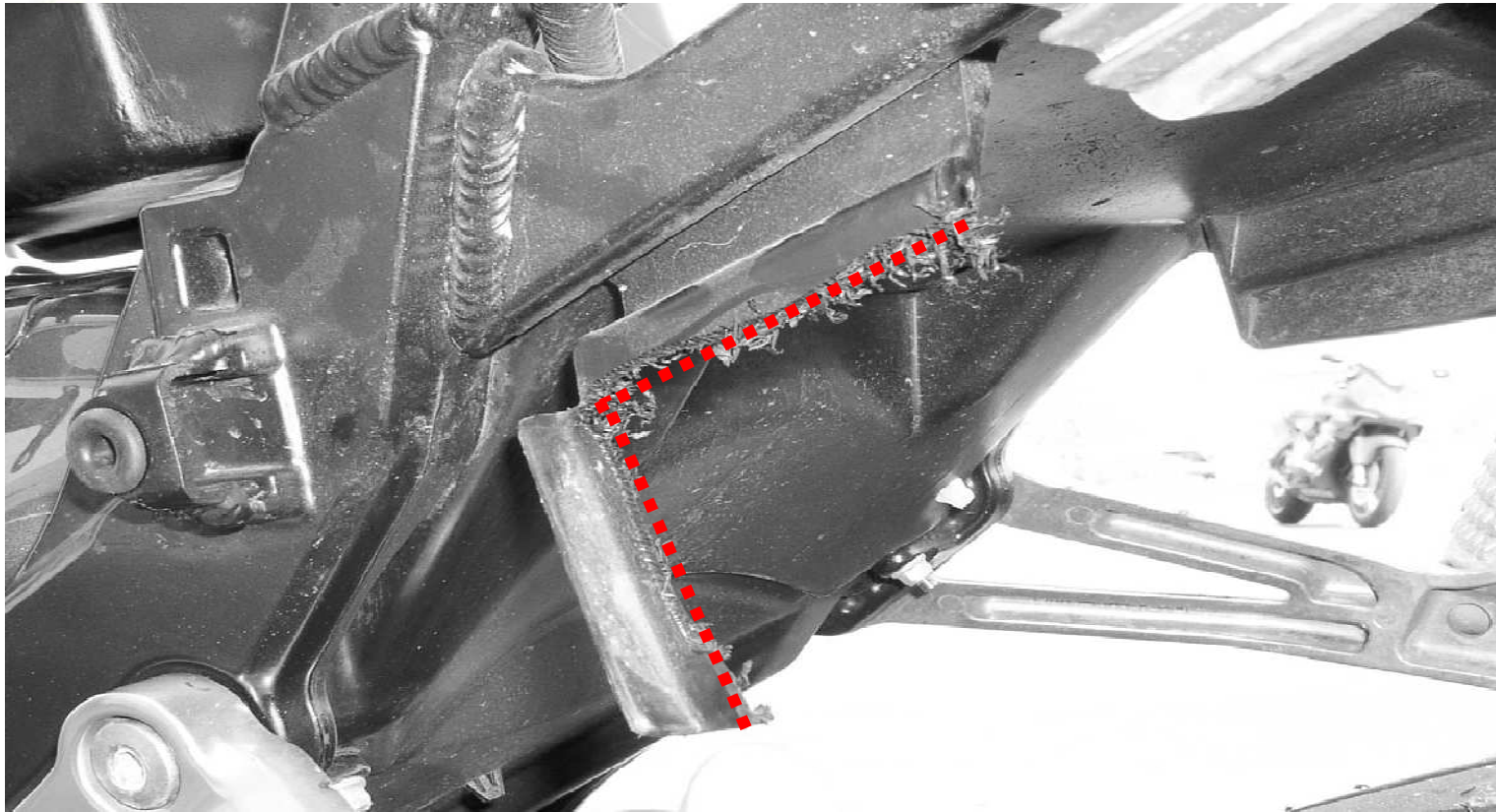
Installation instructions



Carefully remove the tail section body work.

Save all bolts, washers and plastic rivets for re-installation of tail. Disconnect and remove the brake light (with all mounting grommets and washers), license plate and turn signals, key lock (with clip) and move all wiring out of the cutting areas.

Remove the two bolts at the rear end of the stock fender (inside glove box) to allow the end to hang down for cutting. Measure twice and cut once!



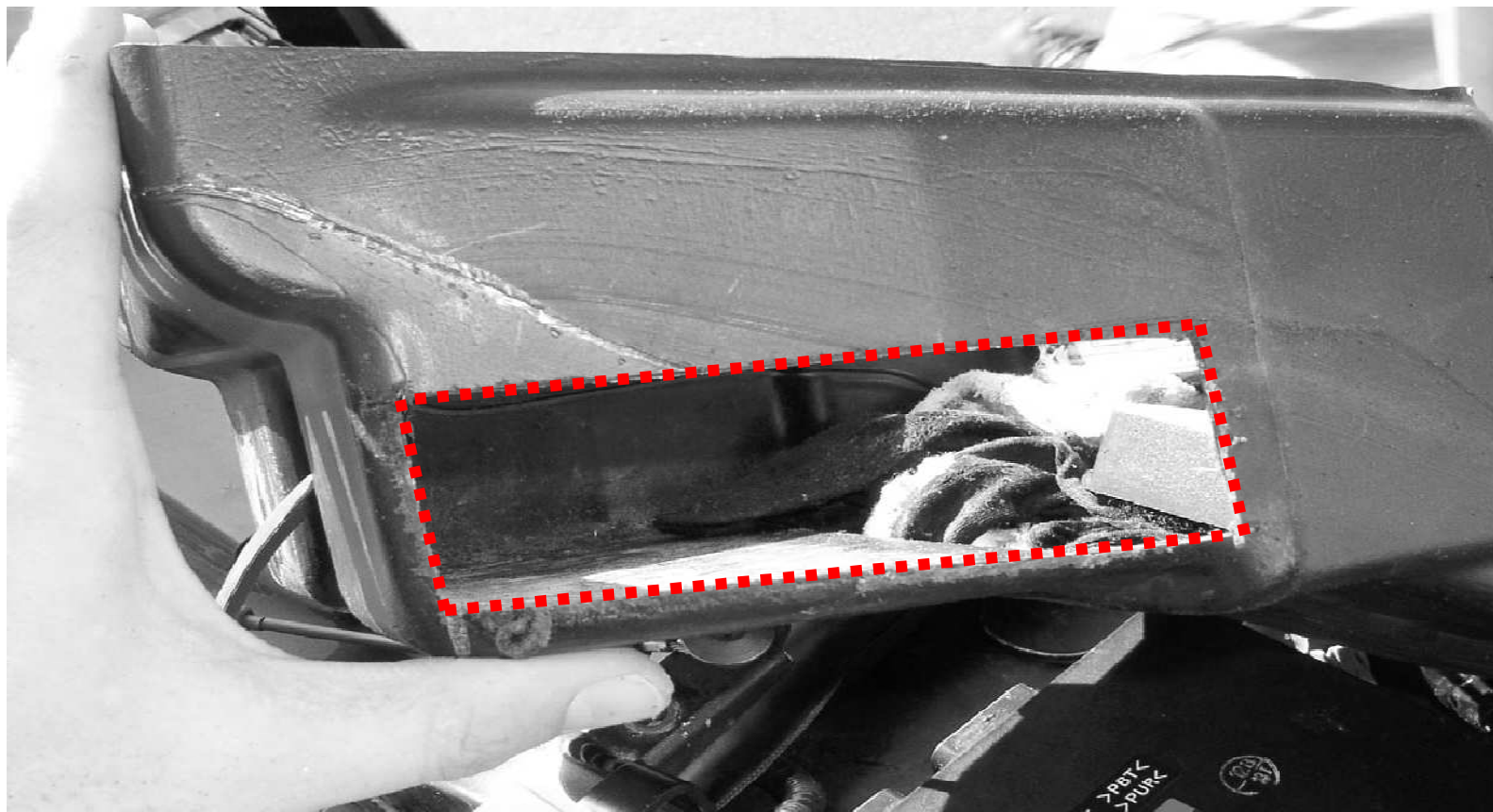
Using a “Dremel” tool or hand saw, remove the plastic shown in the next pictures. Be sure to take your time cutting, so that you don’t cut away any more plastic than necessary.



Be sure to take your time cutting, so that you don't cut away any more plastic than necessary.



Be sure to take your time cutting, so that you don't cut away any more plastic than necessary.



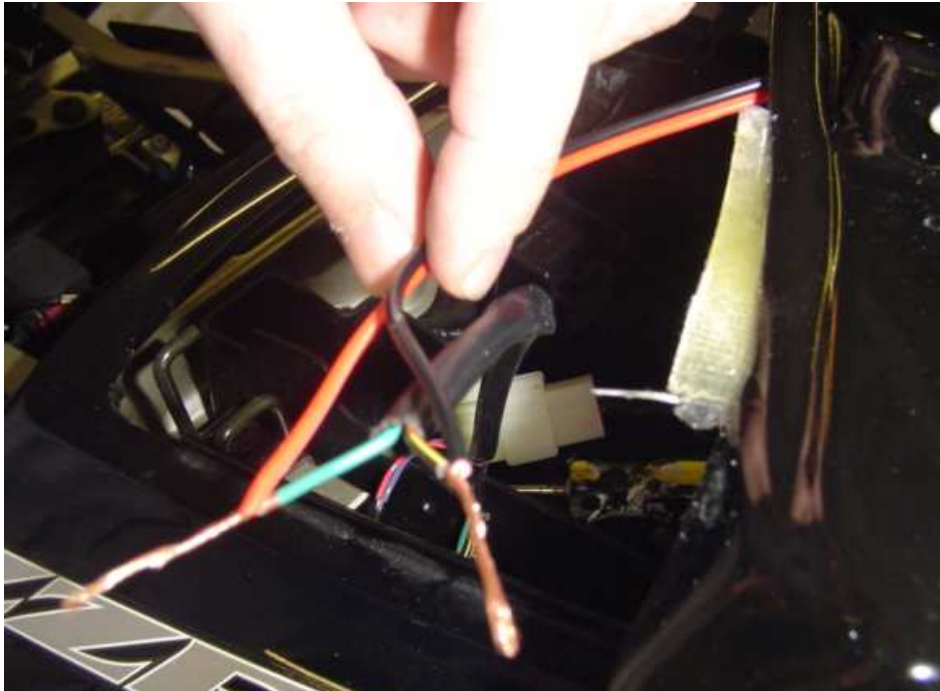
Cut Inner glove box to allow ECU to fit inside.



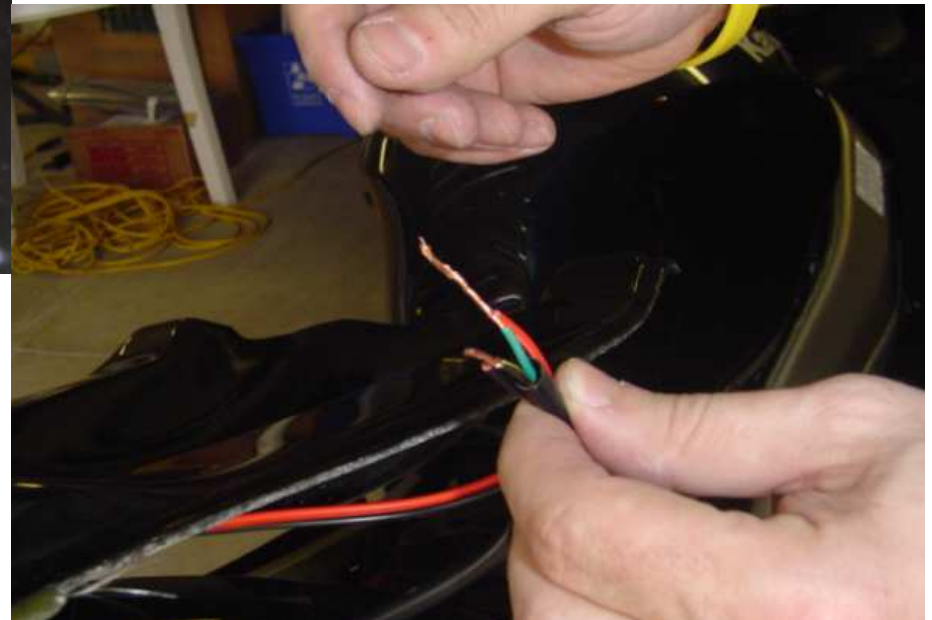
Remove bolts attaching the subframe to the battery box near the passenger foot pegs



TESTING THE BLINKERS



Before installing the undertail make sure to test the blinkers as shown in the pictures





***Reinstall the tail section and glove box. Insert undertail with caution.**

Use masking tape to hold the undertail in position.

Start drilling one side first. Hold both the undertail and tail section with your hands (have a friend help). Use a 13/64" drill bit and drill hole. Continue with the other side.



Using the hardware provided, tighten the undertail. Then, the seat and gas tank cover.

Your done!

