

# Suzuki TLS 1997-2001 Installation instructions



# **BEFORE YOU START**

By following these instructions, you will need to make room to fit the undertail.

Please note some mods will be needed.

There is no way you can install this undertail or any other aftermarket undertail if you don't cut the specified areas in the pictures.

# Suzuki TLS 1997-2001

## Installation instructions

- Remove both seats (Front/Passenger seat or seat cowl).
- Remove the plastics: Rear fairing or tail section.
- Save bolts for later.
- Remove the stock signals/blinkers and license plate (if any)

# Suzuki TLS 1997-2001 Installation instructions

- Now, let's start making room to fit the undertail by cutting the inner tray.
- Cut along the red line shown on the pictures.

## NOTE:

**KEEP THE SIDES OF THE TRAY.!!**

# Suzuki TLS 1997-2001 Installation instructions

- **CUTTING THE INNER TRAY:**

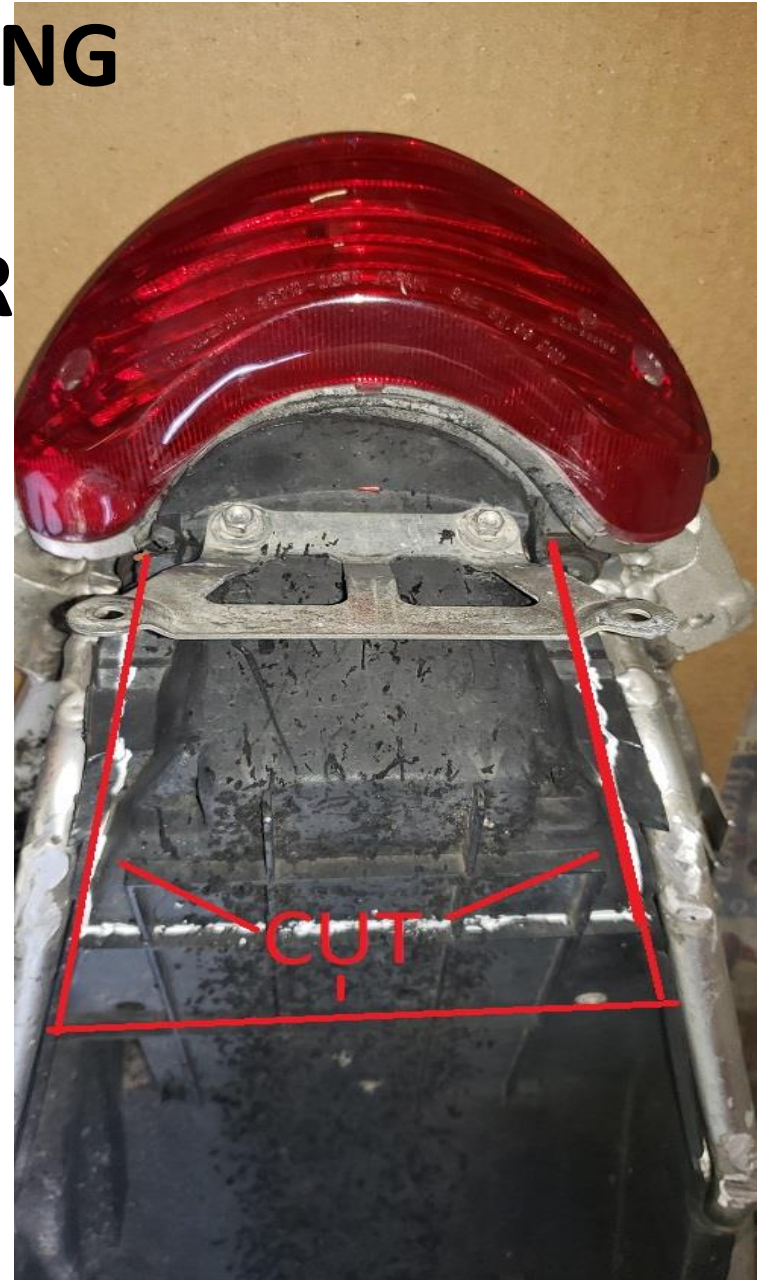
You can either remove the inner tray or keep it in the bike. Whatever works for you!

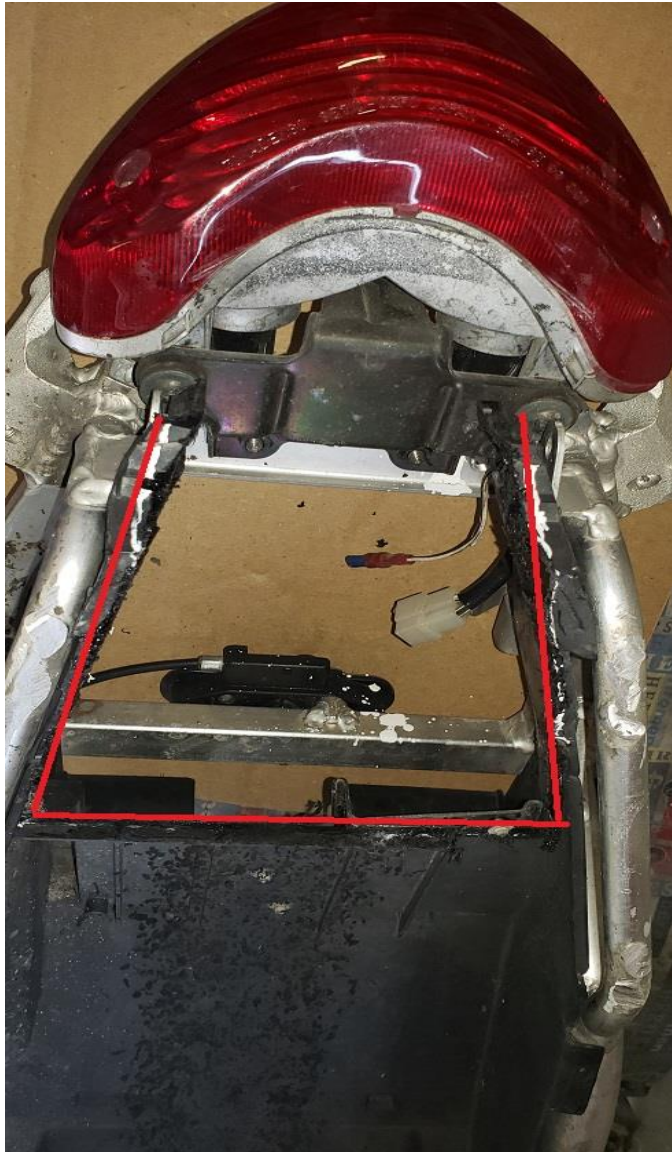
If you remove the complete tail section, make sure to remember how to put it back.

You can use a dremel tool, hand saw or any tool for that matter.

Take your time and be patient so you can do a god job!

# CUTTING THE INNER TRAY





## CUTTING THE INNER TRAY

Will look like  
this

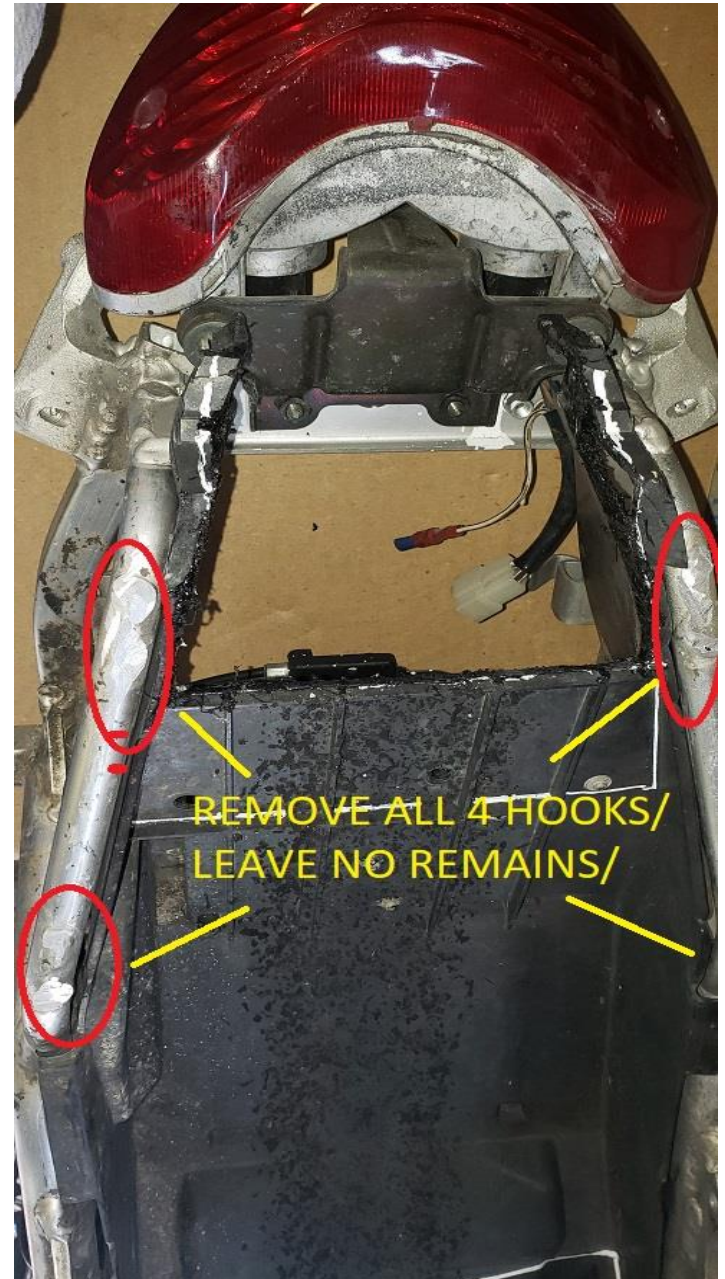
# REMOVING THE HOOKS

Remove the hooks that are welded to the subframe.

Leave no remains!

Any remains will affect the fitting of the undertail.

You can use a grinder, hand saw or any other tool to do the job.





# Suzuki TLS 1997-2001 Installation instructions



# Suzuki TLS 1997-2001

## Installation instructions

- Once you have made room for the undertail , you are ready to install it.
- Splice the wires from the OEM signals/blinkers previously removed and re-attach them to the undertail (left & right).
- Test them to see if they are working properly. In case they are not, don't be afraid to swap the wires. It won't cause any damage to the undertail.

# Suzuki TLS 1997-2001 Installation instructions

- We understand some bikes do not have tabs to attach the undertail to the tail section. That is why we have included zip ties to hold it. The undertail won't fall off.

# Suzuki TLS 1997-2001

## Installation instructions

- Position the undertail in place.
- Note the undertail comes with 2 pre-drilled holes on the top sides. Using the 2 zip ties (provided) use them to hold the undertail in place but DO NOT FASTEN THEM YET!!
- The bottom of the undertail comes with 2 pre-drilled holes as well (corners).
- Align the undertail with the tray. Once everything is aligned (top and bottom) proceed to drill 1 hole on each corner using drill bit -----

# Suzuki TLS 1997-2001

## Installation instructions

- Using the 2 small zip ties (provided) use them to hold the undertail in place but DO NOT FASTEN THEM YET!!
- Once everything is completely in place and aligned, install the tail section and FASTEN all 4 zip ties (top & bottom). Put all screws back, check blinkers/signals, light and you are good to go!!