

Suzuki TLS 1997-2001 Installation instructions



BEFORE YOU START:

By following these instructions, you will need to make room to fit the undertail.

Please note some mods will be needed.

There is no way you can install this undertail or any other aftermarket undertail if you don't cut the specified areas shown in the pictures

Suzuki TLS 1997-2001

Installation instructions

- Remove both seats (Front/Passenger seat or seat cowl).
- Remove the plastics: Rear fairing or tail section.
- Save bolts for later.
- Remove the stock signals/blinkers and license plate (if any)

Suzuki TLS 1997-2001 Installation instructions

Now, let's start making room to fit the undertail by cutting the inner tray.

Cut along the red line shown on the pictures.

NOTE: KEEP THE SIDES OF THE TRAY.!!

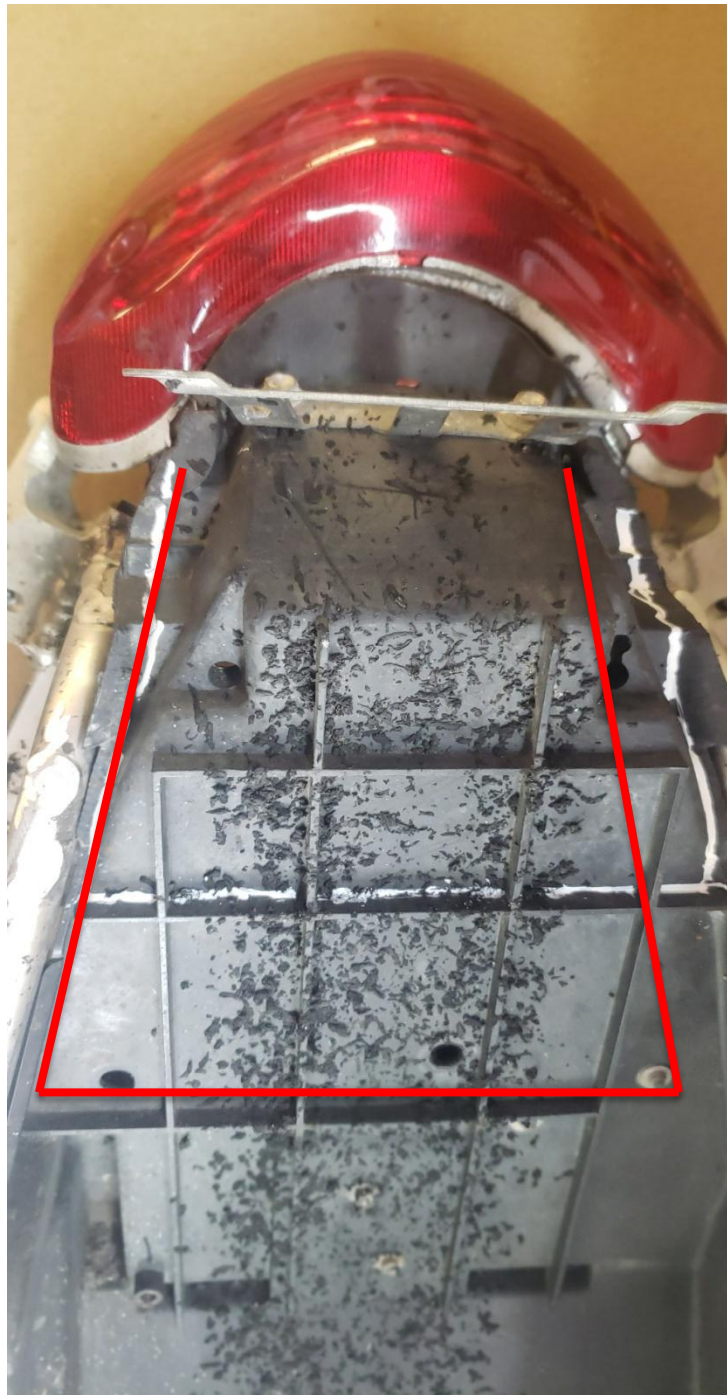
Suzuki TLS 1997-2001 Installation instructions

CUTTING THE INNER TRAY:

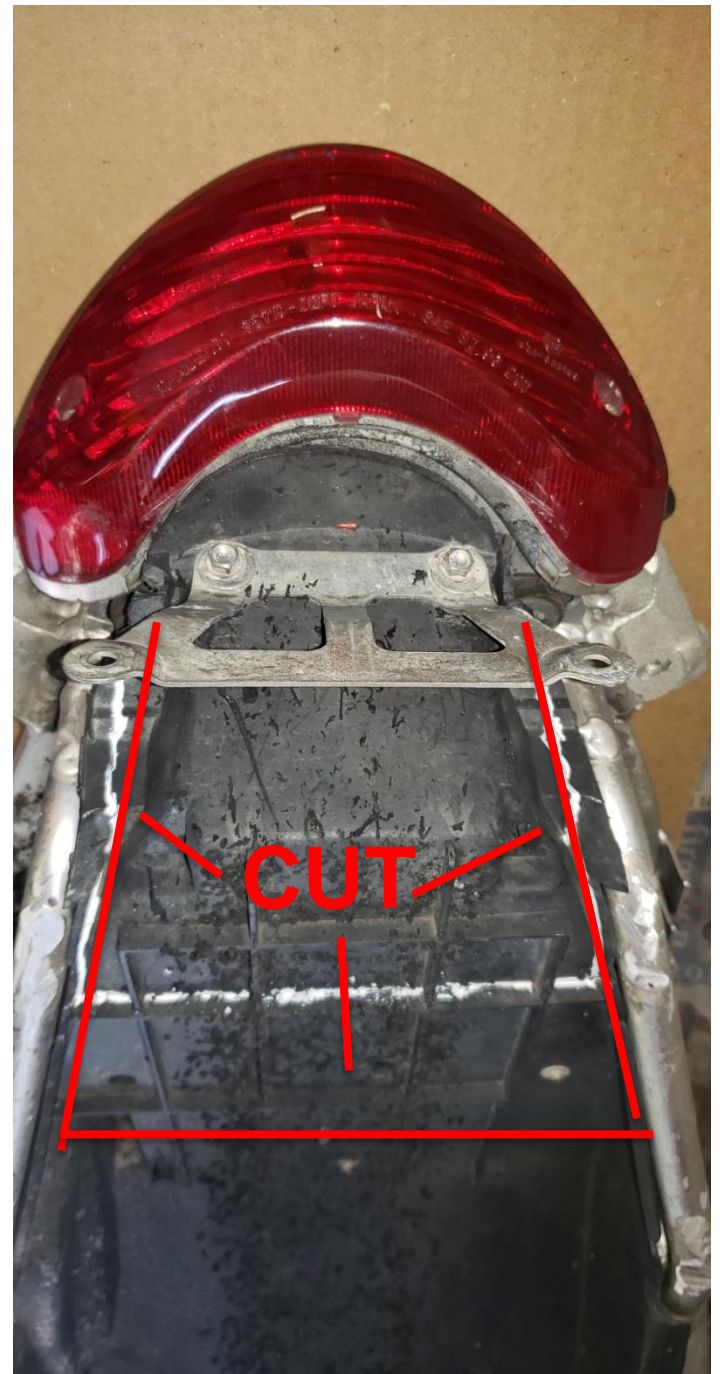
You can either remove the inner tray or keep it in the bike. Whatever works for you!

If you remove the complete tail section, make sure to remember how to put it back.

You can use a dremel tool, hand saw or any tool for that matter. Take your time and be patient so you can do a god job!

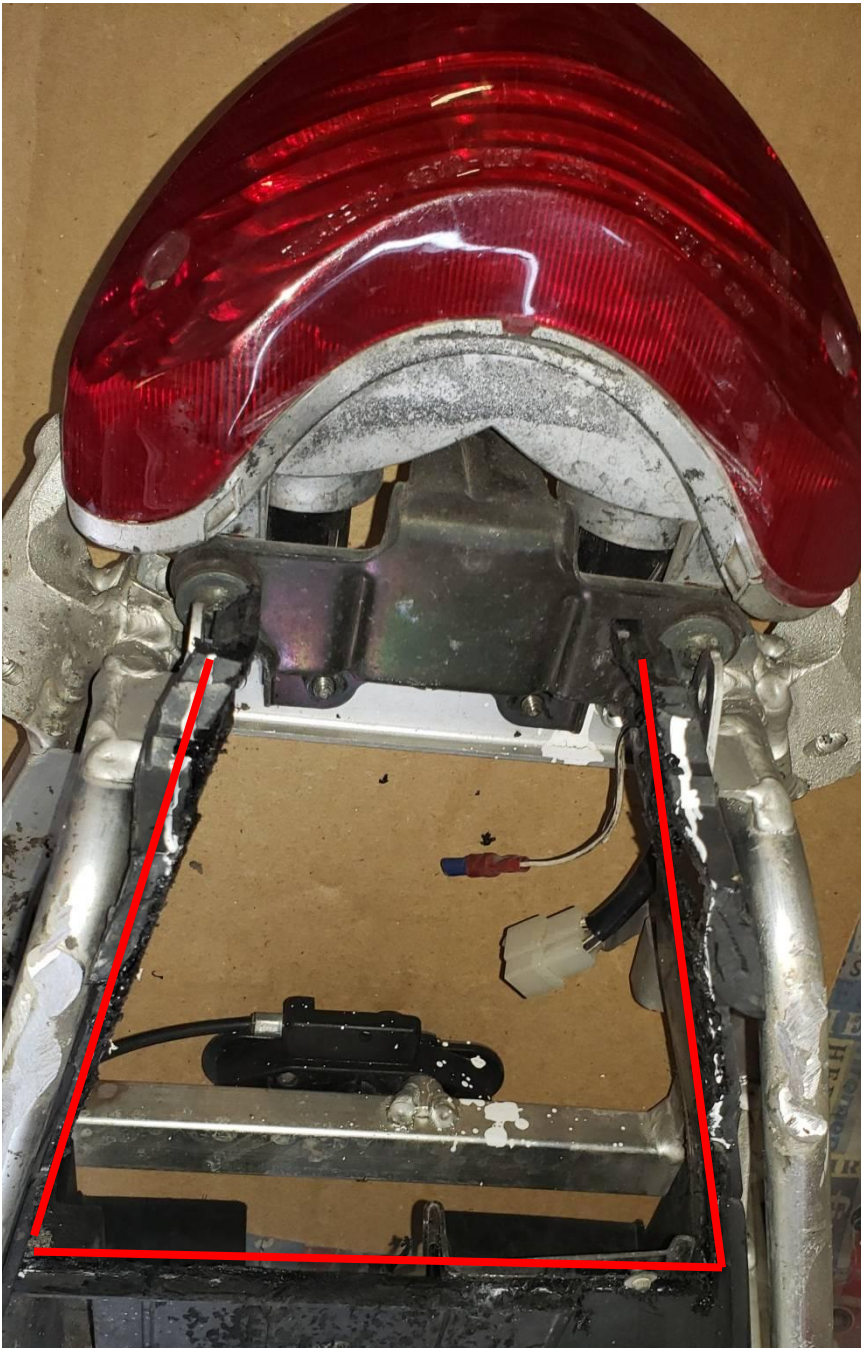


**CUTTING
THE
INNER
TRAY**



CUTTING THE INNER TRAY

Will look like this



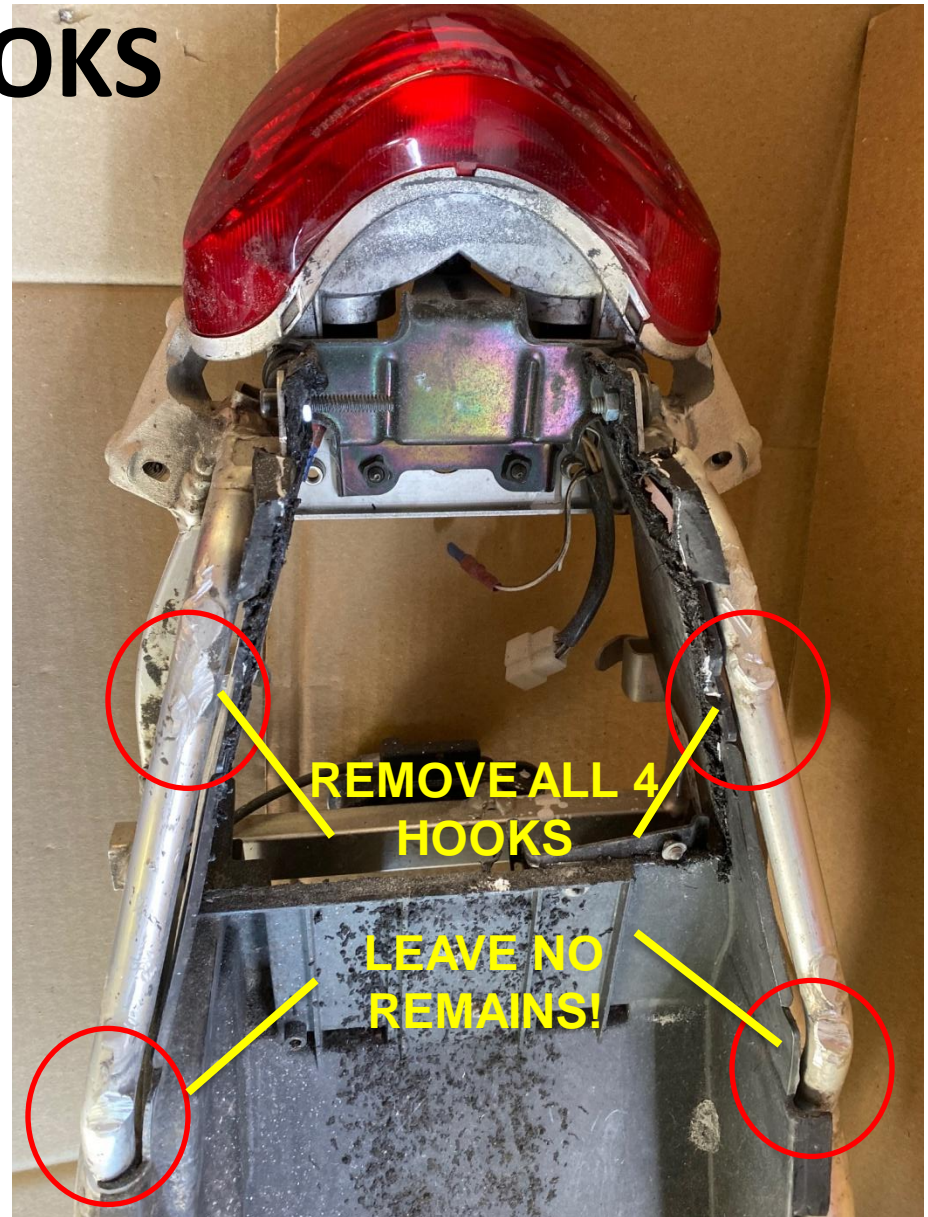
REMOVING THE HOOKS

Remove the 4 hooks that are welded to the sub frame.

Leave no remains!

Any remains will affect the fitting of the undertail.

You can use a grinder, hand saw or any other tool to do the job.



Suzuki TLS 1997-2001 Installation instructions



Suzuki TLS 1997-2001

Installation instructions

- Once you have made room for the undertail , you are ready to install it.
- Splice the wires from the OEM signals/blinkers previously removed and re-attach them to the undertail (left & right).
- Test them to see if they are working properly. In case they are not, don't be afraid to swap the wires. It won't cause any damage to the undertail.

Suzuki TLS 1997-2001 Installation instructions

We understand some bikes do not have tabs to attach the undertail to the tail section.

That is why we have included zip ties to hold it.

The undertail won't fall off.

Suzuki TLS 1997-2001 Installation instructions

Position the undertail in place.

Note: the undertail comes with 2 pre-drilled holes on the top sides. Using 2 of the zip ties (provided) hold the undertail in place but

DO NOT FASTEN THEM YET!!



**DO NOT FASTEN
THEM YET!!**

Suzuki TLS 1997-2001

Installation instructions



The bottom of the undertail comes with 2 predrilled holes. (corners).

Suzuki TLS 1997-2001

Installation instructions

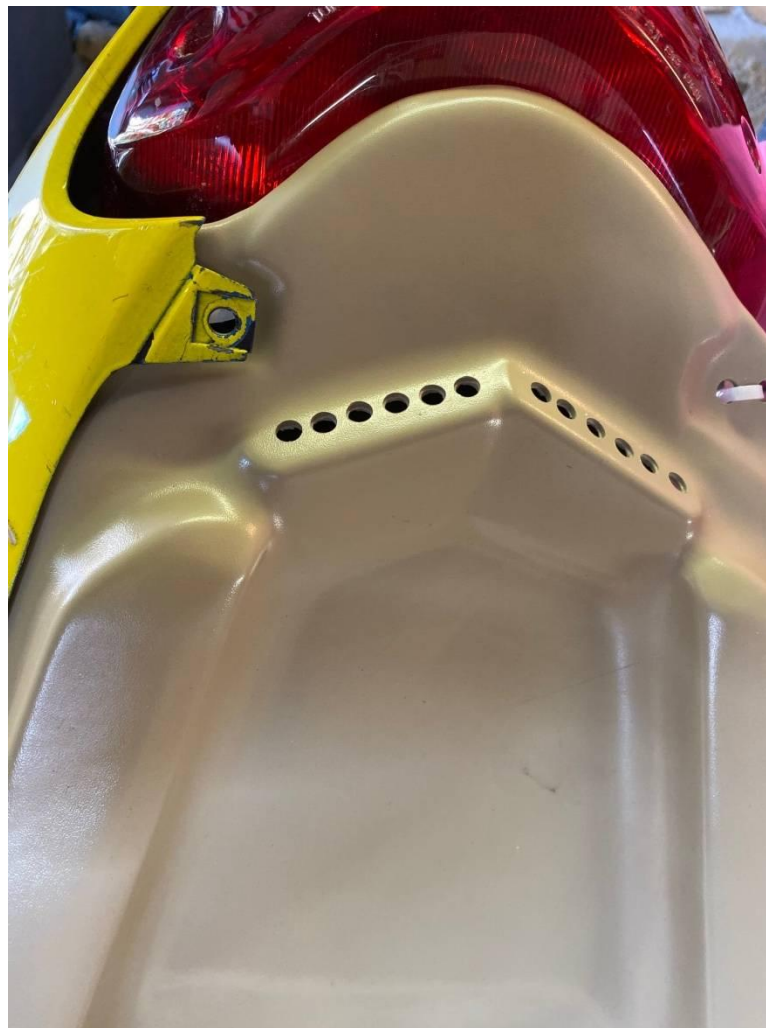


Align the undertail with the tray. Once everything is aligned (top and bottom) proceed to drill 1 hole on each corner

Use 2 zip ties (provided) to hold the undertail in place but **DO NOT FASTEN THEM YET!!**



Once everything is completely in place and aligned, install the tail section and FASTEN all 4 zip ties (top & bottom).



Once everything is completely in place and aligned, install the tail section and **FASTEN** all 4 zip ties (top & bottom).





Note:

We have included an additional piece of plastic in case you need it to complete the inside tray, along with some additional zip ties.

Suzuki TLS 1997-2001 Installation instructions

- Finally, put all screws back, check blinkers/signals, light and you are good to go!



WHERE TO PLACE THE LICENSE PLATE:

