


**SRAD UNDERTAIL**  
INSTALLATION INSTRUCTIONS

**Before beginning the installation, make you sure that you are competent or that you have skills to do it, otherwise get somebody to install it for you (a professional mechanic for instance).**



Remove the rear tail body.



STEP 2

Remove the cargo hooks with a hand blade saw.  
**Don't leave any remains!**



Remove the original tail light.



Cut a bit the rear trunk plastic for the new twin lights  
(approx. 1 - 1/2")



Should look like this.



## WHILE INSTALLING THE SOCKETS AND BOLTS:

- A- Use your own stock sockets. That way you won't have to cut any wires
- B- Plug in the sockets thru the base; place the washers and nuts and adjust them. It should look like this picture.
- C- Don't tight them too hard.



**NOTE:** It's easier for you to assembly the tail lights before installing the undertail.



Install the undertail.  
Once aligned, start screwing everything (get help from somebody while doing this)



STEP 1

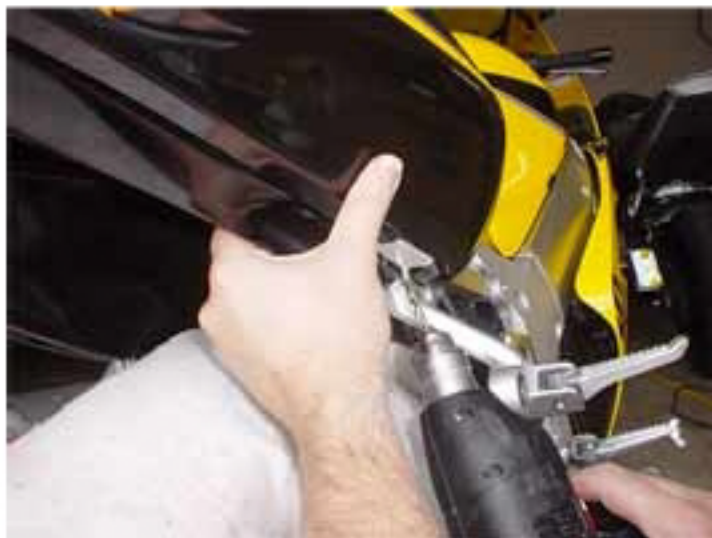
Mark a spot in the area shown on the picture.  
Use masking tape to avoid damage to the paint.



## STEP 2

**WARNING:** To avoid damage to the paint, try using a high speed drill (Dremmel minimum 10000 tr/mn)

Hold the tail and the undertail together. Once aligned, start drilling a hole (do this on both sides).



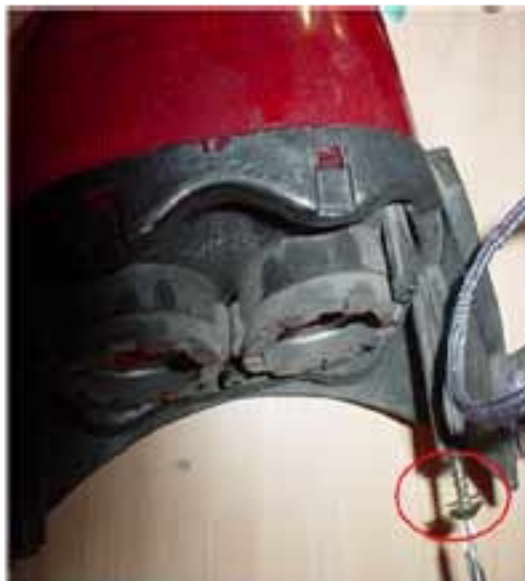
**PLEASE USE A  
1/8" BIT ON  
THIS STEP**

Should look like this (on both sides)



# STEP 4

Your tail light comes with 2 screws that hold the tail section  
You should have already removed them.

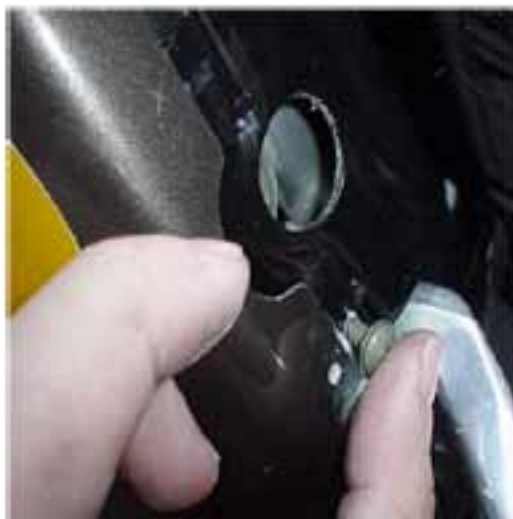


Both screws should look like the ones on the picture.



Check if the screw goes thru the hole drilled on the undertail  
easily (as shown in the picture)

**This is just a test – don't leave it in yet!**



# STEP 6

Align the tail section with the undertail and screw everything together.  
Make sure the screw is tight while going thru the hole and the hole that is passing thru the undertail as well.  
Do the same on the other side.





Should look like this (on both sides)



The tail section has to 2 predrilled holes.  
You have to drill 2 holes in the undertail (in the same position) and screw everything.



# TIP

## SCRATCHS

If during the installation process you scratch your bike, consider getting a touch up paint similar to the one on the picture. It costs less than \$5.00 at any Walmart or auto parts store.



CONGRATULATIONS!  
**YOU ARE DONE!**

