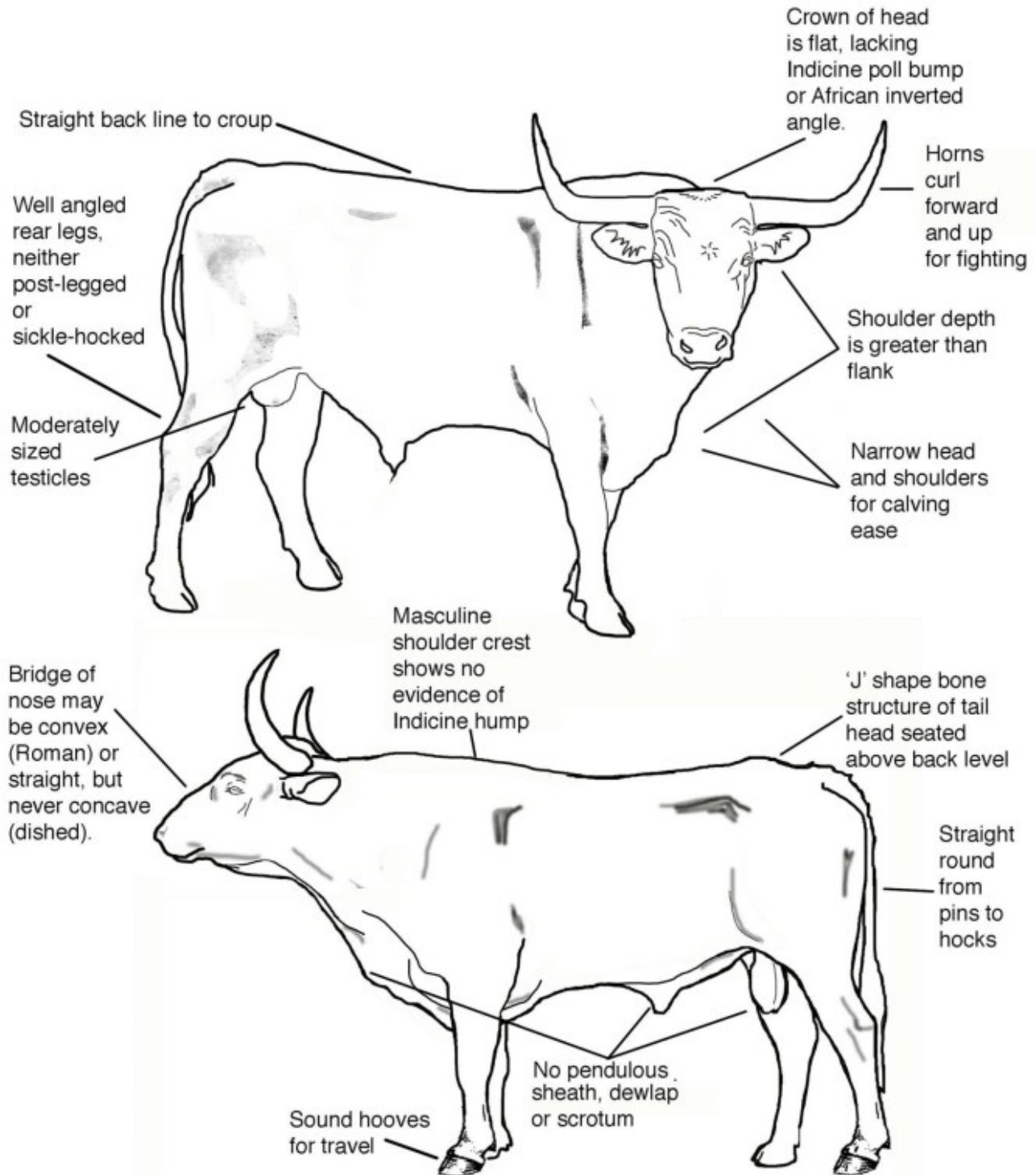
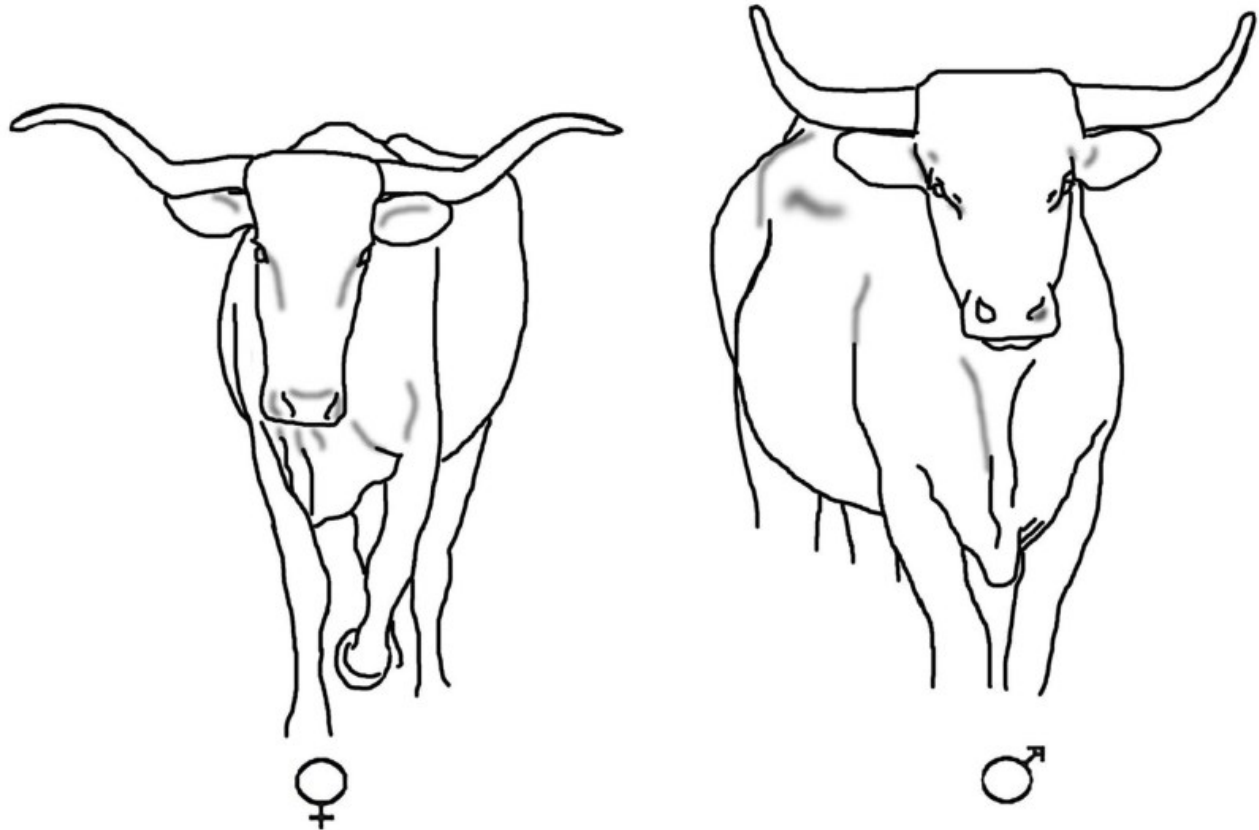


Bull Conformation Standards

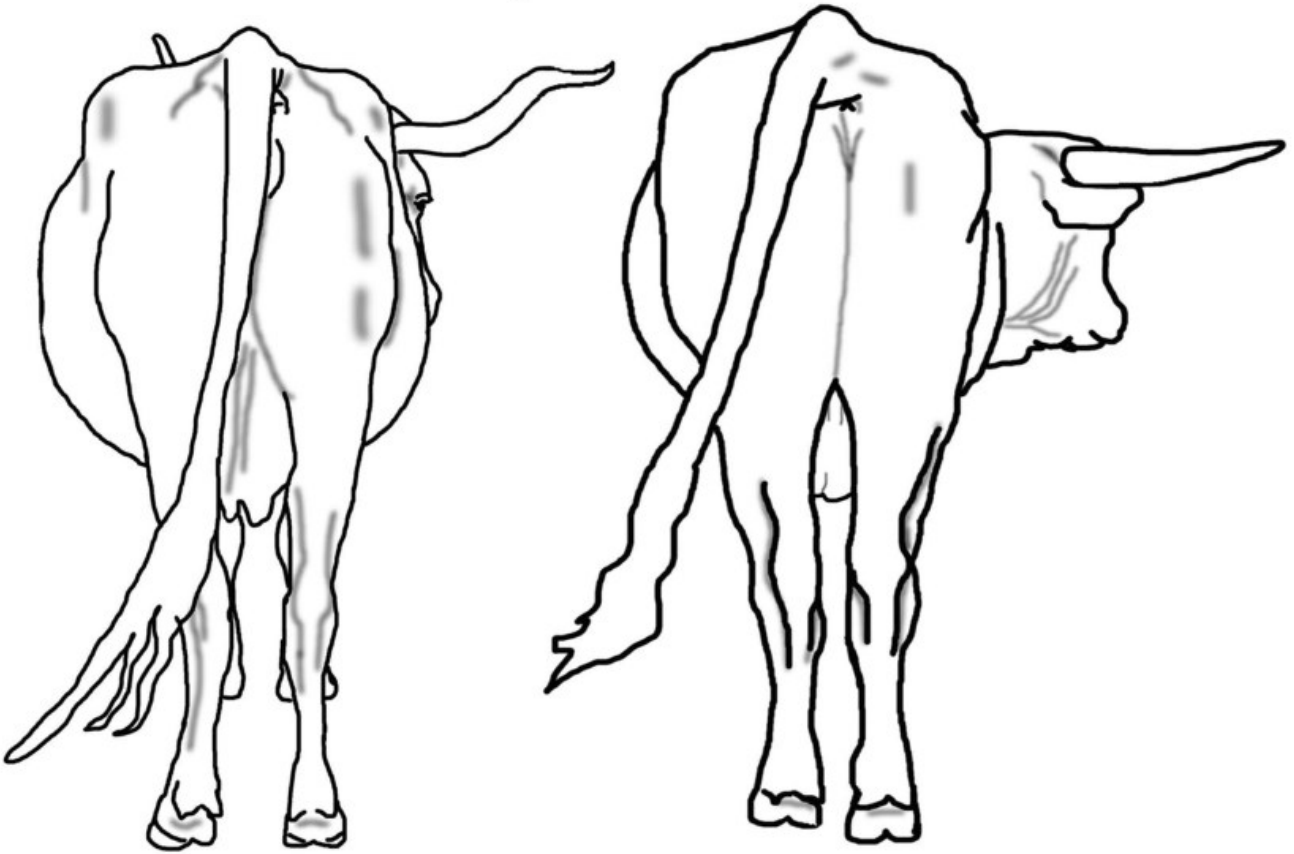


Historically Correct Texas Longhorn Head & Shoulder Conformation



Narrow heads and shoulders are an evolutionary trait of Texas Longhorn cattle for calving ease. Heads of traditional cattle are approximately the same width at the crown as the muzzle. Muzzle width enables increased Oxygen intake capacity resulting in greater endurance and ability to travel between water and grazing sites.

Historically Correct Rear Leg Conformation



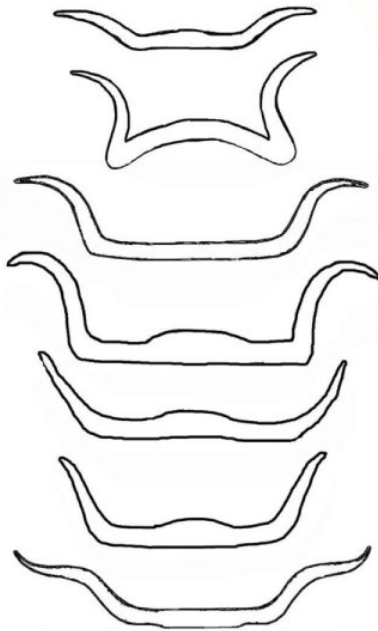
♀

Scrotal & Udder
Attachments

♂

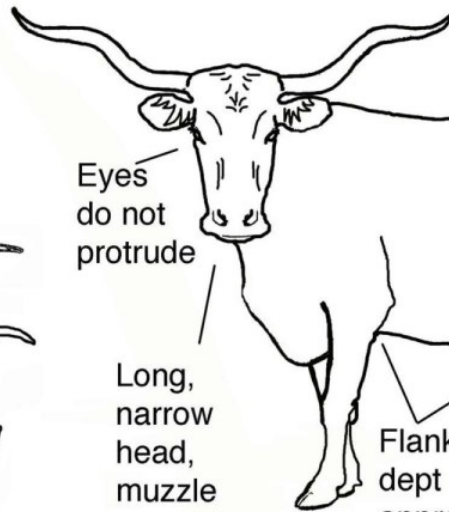


Cow Conformation Standards



Horn shapes vary, all twist forward, up and out. Flat or uniform "U" shapes are not typical.

Squarely set legs for free and easy gait



Eyes do not protrude

Long, narrow head, muzzle approximately same width as crown

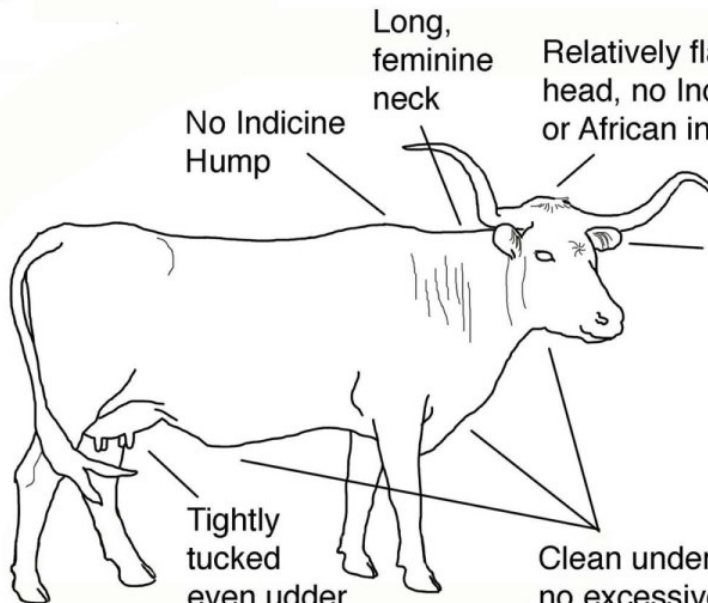
Flank dept approximately same as heart girth

S or J shaped tail head, level or higher than back. No sloping rump angle.

Level pelvis angle from hooks to pins

Straight round from pins to hocks

Long tail switch for swatting insects



No Indicine Hump

Long, feminine neck

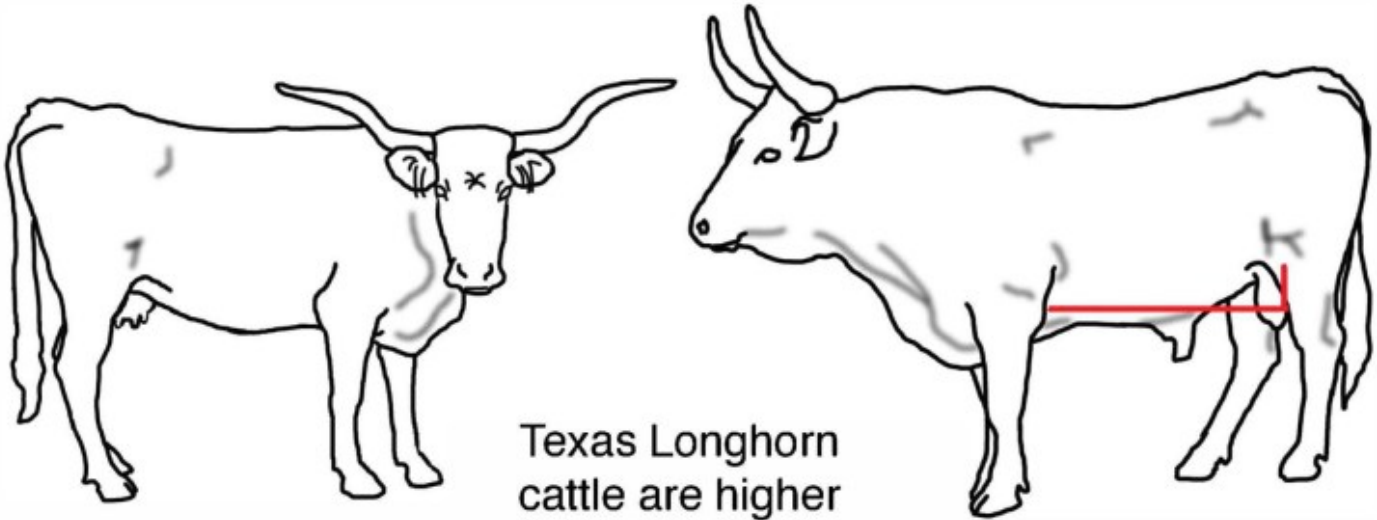
Relatively flat crown of head, no Indicine poll bump or African inverted angle

Small, elliptical ears tucked tightly under horns, with long hair to protect from insects

Tightly tucked even udder with small symmetrical teats

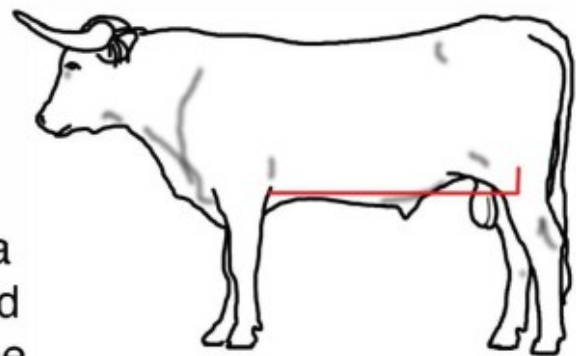
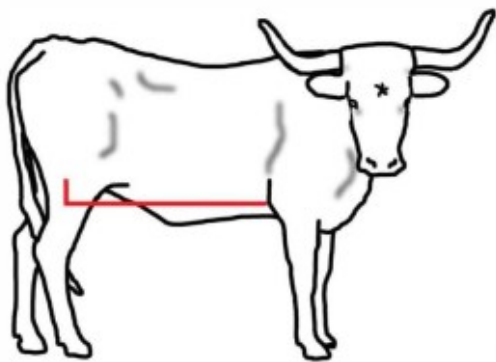
Clean undersides, no excessive throat latch, dewlap or navel

Historically Correct Texas Longhorn Conformation



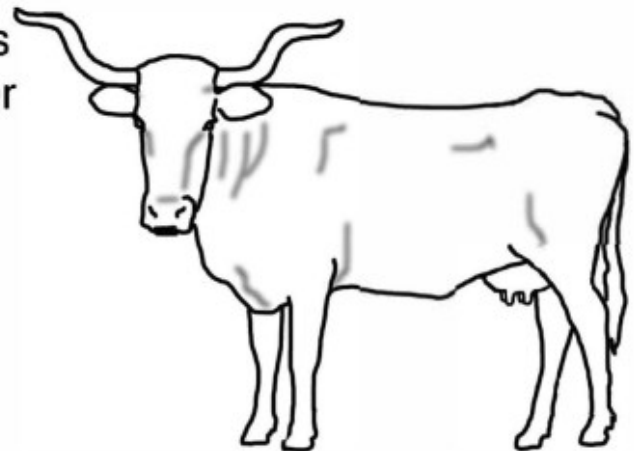
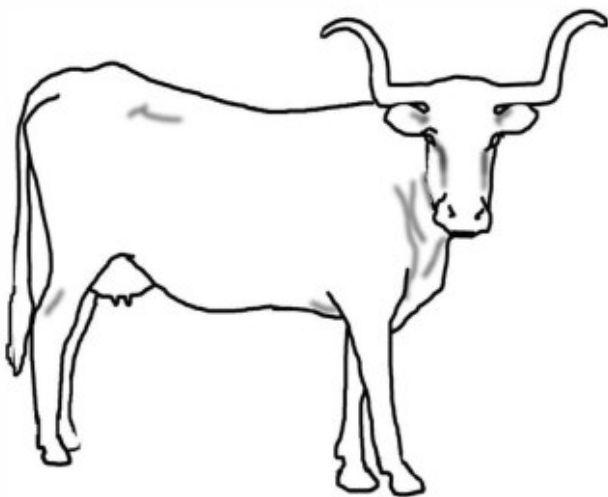
Texas Longhorn
cattle are higher
in the flank

than
other
beef
breeds.

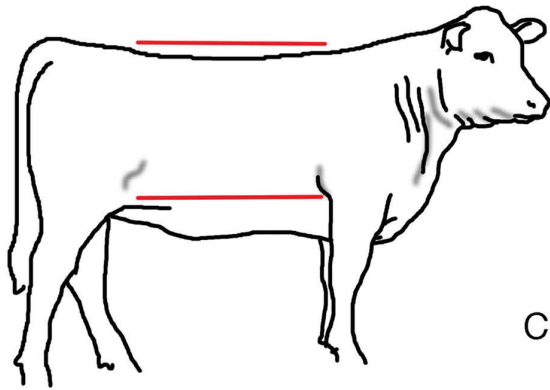


There is a
slight bend
in the spine
that

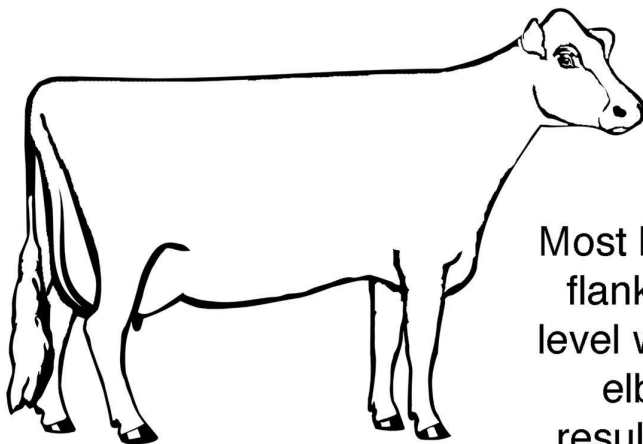
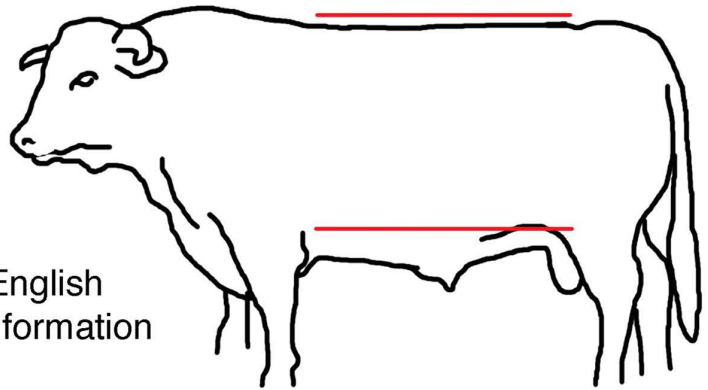
facilitates
the higher
tail set.



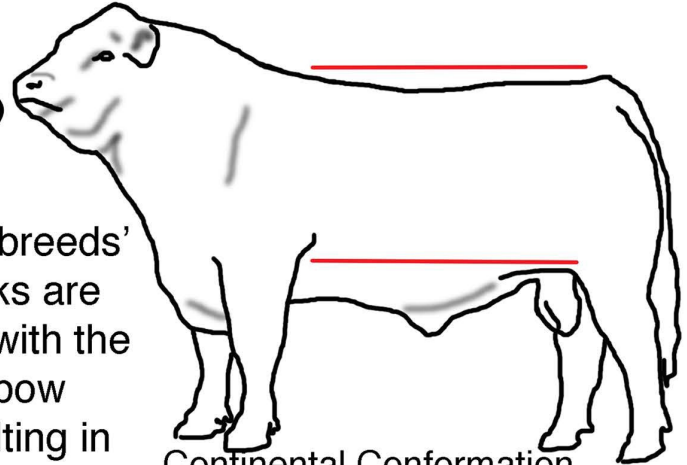
Other Breed Conformations



English
Conformation

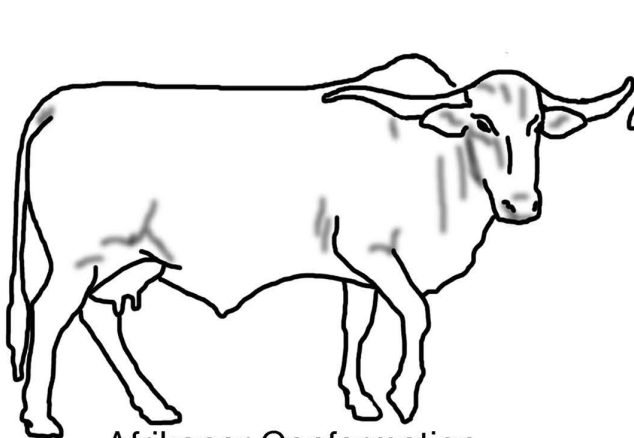


Dairy Conformation



Continental Conformation

Most breeds' flanks are level with the elbow resulting in level spines.



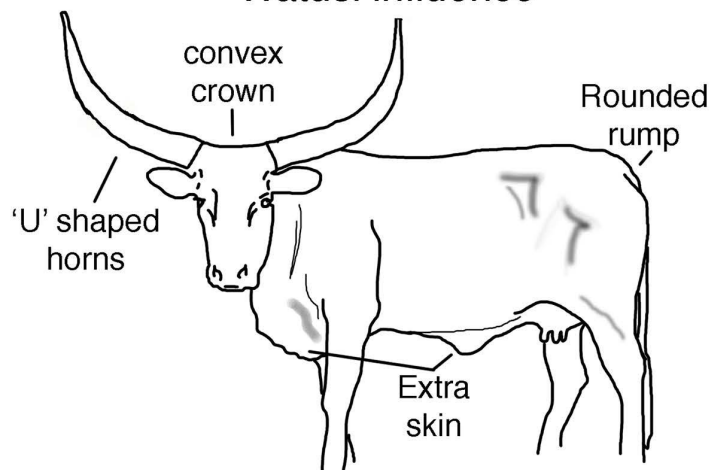
Afrikaner Conformation



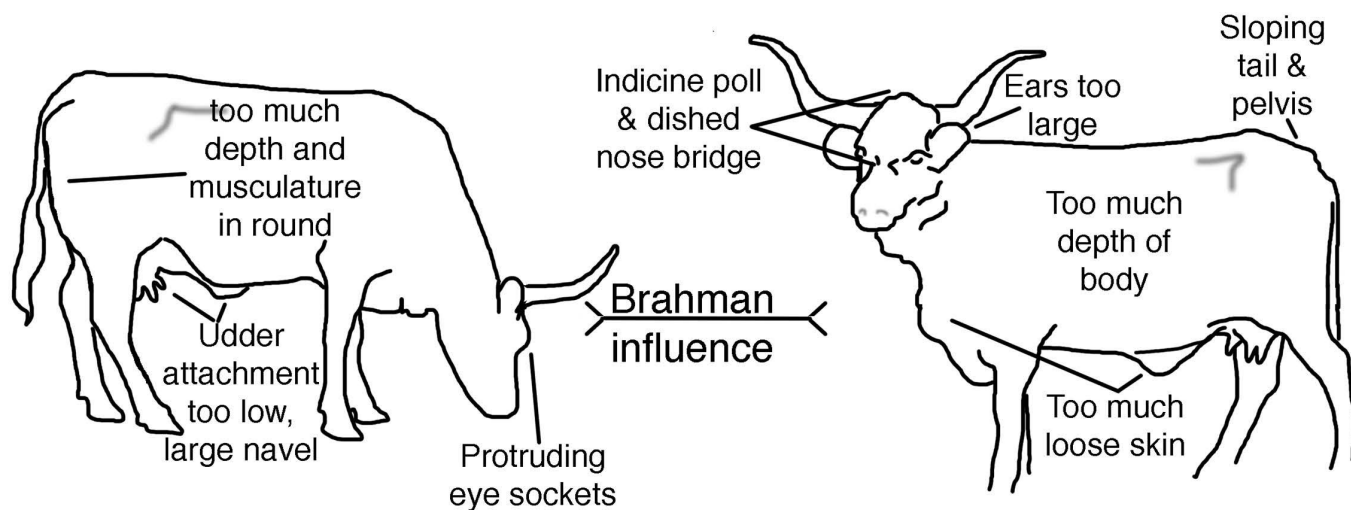
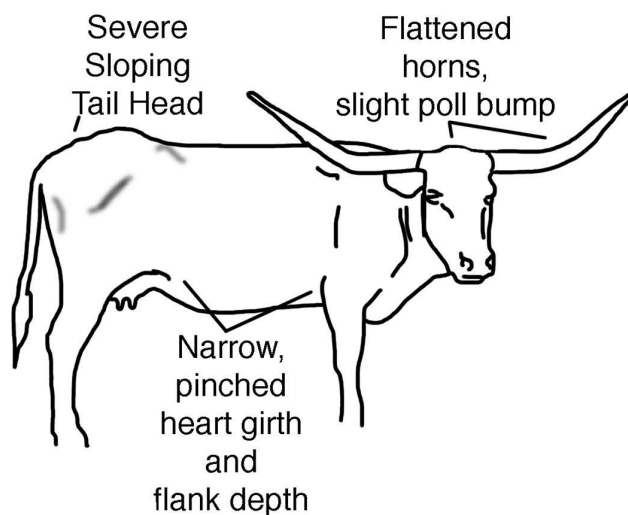
Brahman Conformation

Evidence of Hybridization

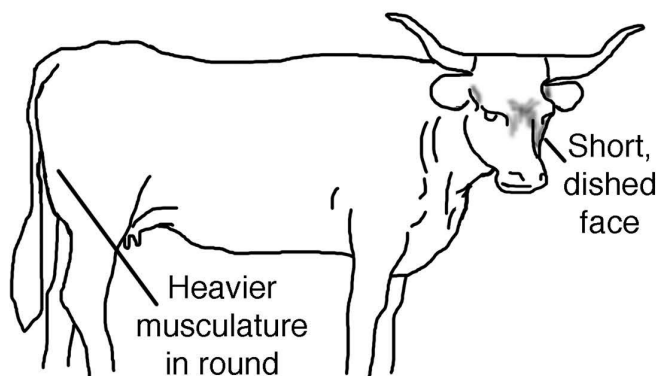
Watusi influence



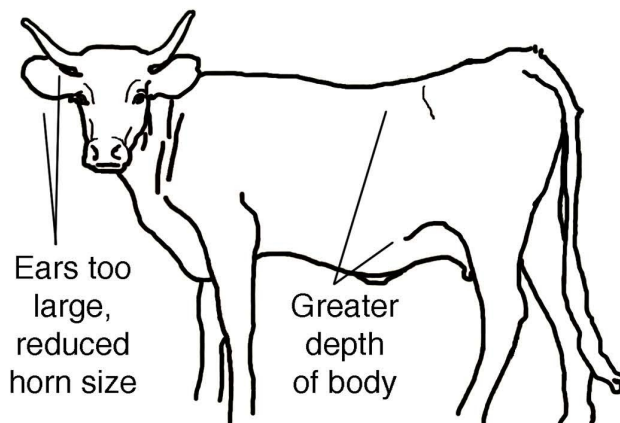
Composite



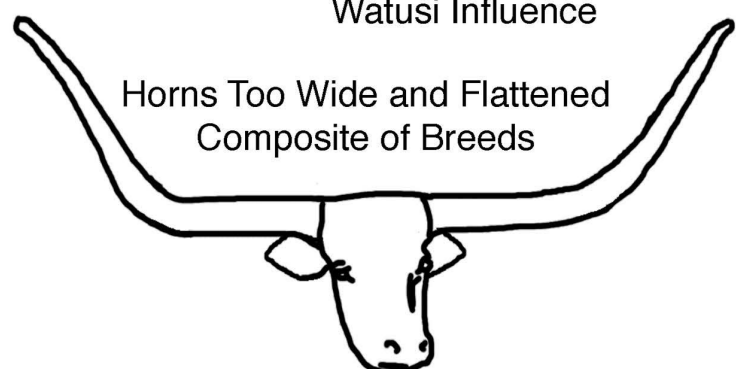
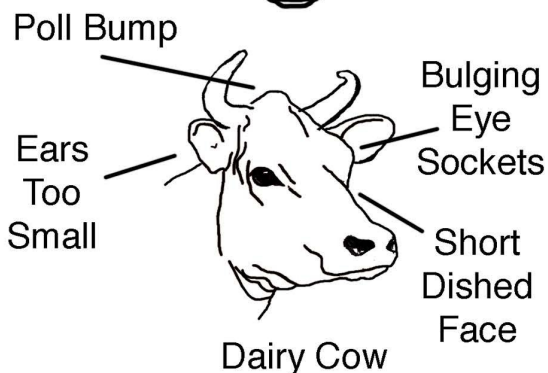
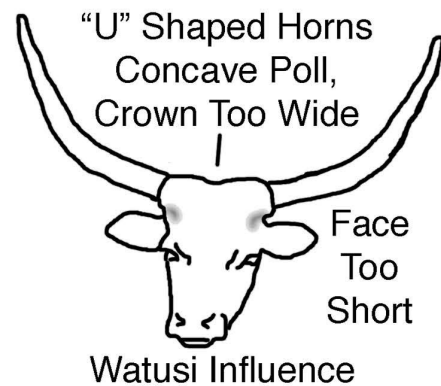
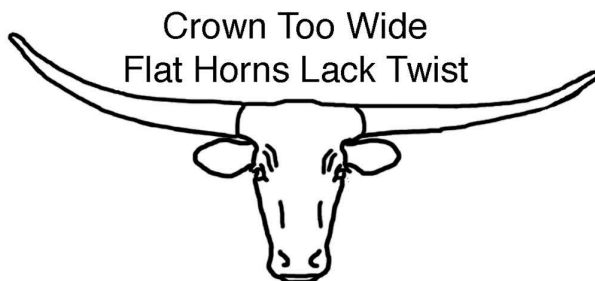
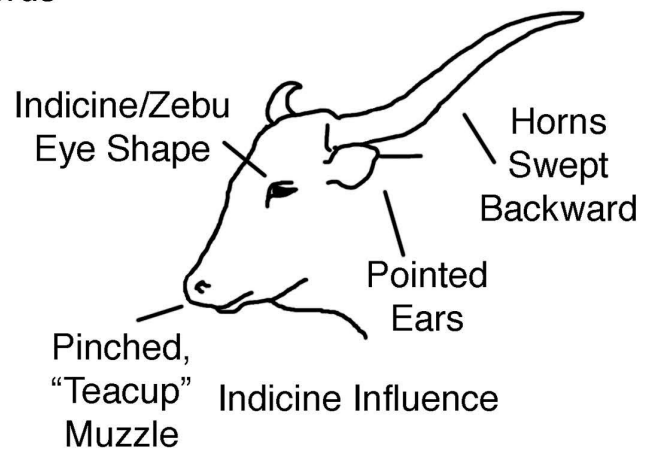
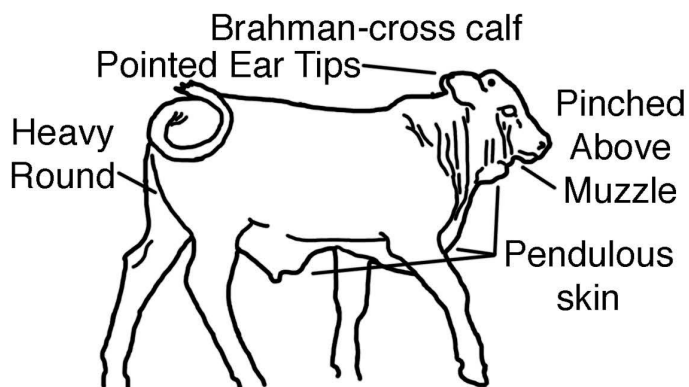
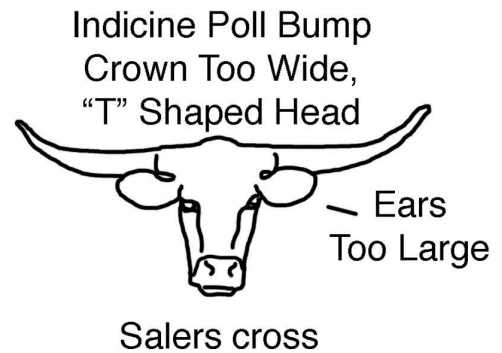
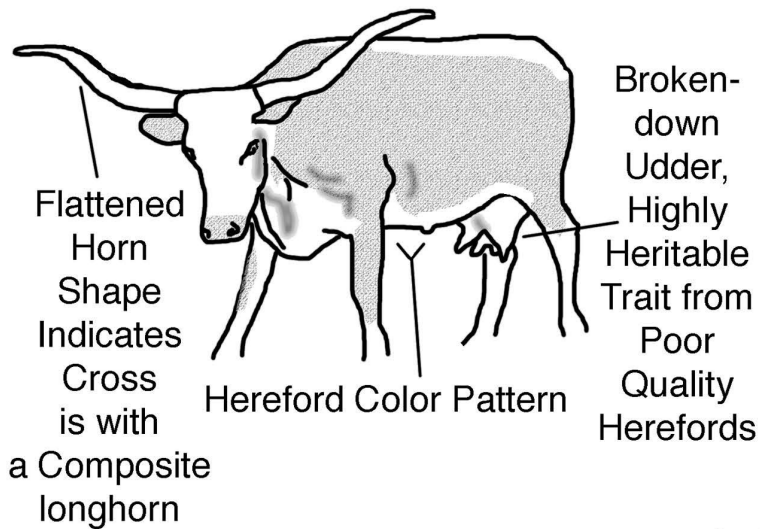
English influence



Continental influence



Evidence of Introgression from Other Breeds



Breed Head Comparisons



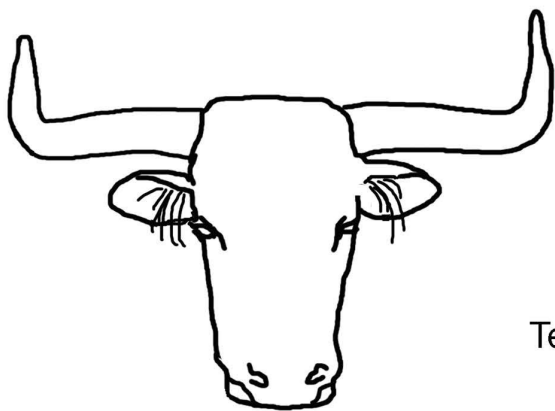
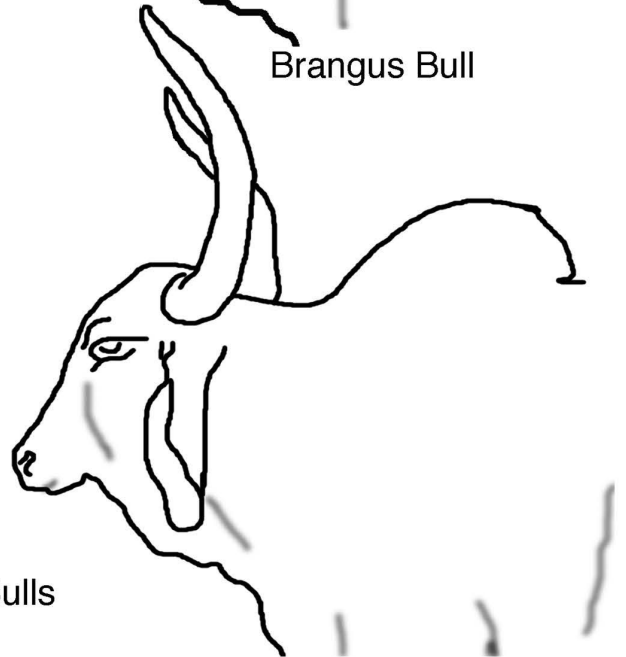
Hereford Bull



Brangus Bull



Brahman Bulls



Historically
Correct
Texas Longhorn
Bulls

