

Gift of Power impact

The AES Ohio Gift of Power program completed its eighth year providing emergency assistance to customers struggling to pay their winter heating bills. Our contribution along with generous donations from customers and employees kept the power on for families, friends and neighbors. All donations were administered by The Salvation Army.



aes-ohio.com/gift

Since the program began in 2015, Gift of Power **has helped** 4,000 customers with donations totaling nearly \$1.8 million.



\$1,050,000
AES Ohio
grants



\$720,000
Customer
donations



4,000
Families
assisted

Spring energy savings with smart thermostat instant rebates



Convenience + comfort

Control your home's heating and cooling from anywhere with an energy efficient smart thermostat.

Check out the instant rebates from top brands on AES Ohio Marketplace.



aesohiomarketplace.com

Questions on medical certification or life support?



If a permanent member of your household receives care for a serious medical condition and you need help paying your energy bill, you may qualify for assistance.

A licensed physician, physician assistant, clinical nurse specialist, certified nurse practitioner, certified nurse-midwife or local board of health physician must

certify the condition or the need for medical or life-supporting equipment to AES Ohio. We can defer payment for 30-90 days per household year. Contact us at **800-433-8500** to learn more.

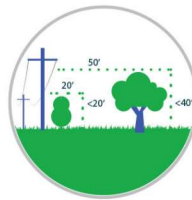
AES Ohio's Right Tree, Right Place Program

With the spring planting season in full swing, planning is important. AES Ohio's Right Tree, Right Place program can help you select a tree that is appropriate for the area you're considering. Keep in mind three tips on how to plant smart with the utilities in mind.



1. Find the right tree

Trees come in all shapes and sizes and often change dramatically over their lifetimes. Before selecting your tree, make sure you know how tall and wide the tree or shrub will be at maturity.



2. Choose the right spot

Where you plant is just as important as what type of tree you plant. Be sure you plant the tree so it will continue to be a safe distance from existing utility lines as it grows to maturity.



3. Put safety first

It is important to avoid injury and damage to underground electrical, gas, and other utility lines. Homeowners must contact **OHIO811** at 8-1-1 or **800-362-2764** two days before starting a digging project or submit a request with e-dig at oups.org/edig.



For more information about the Right Tree, Right Place program, visit our website at www.aes-ohio.com/righttree.



Customer Service
800-433-8500

Visit us Online
aes-ohio.com



aes Ohio