

# Coca-Cola®

micro markets



PRODUCT CATALOG

2020

# The Micro Market Solution For Coca-Cola Bottlers

Introducing the solution  
to scale your micro market business.

1. Measure Your Space
2. Select Your Graphic Design
3. Place Your Order

**Our micro markets are shipped 90% assembled.**

All Models Include Marquee Sign Of Your Choice



Modular

Alcove  
Model



-Interchangeable  
Wall Panels



Expandable



-Marquee Sign

-No attachment to customer's facilities



**Simple assembly** requiring small assortment of hand tools.  
Prices vary by quantity, model and customization choices.



# Modular Design

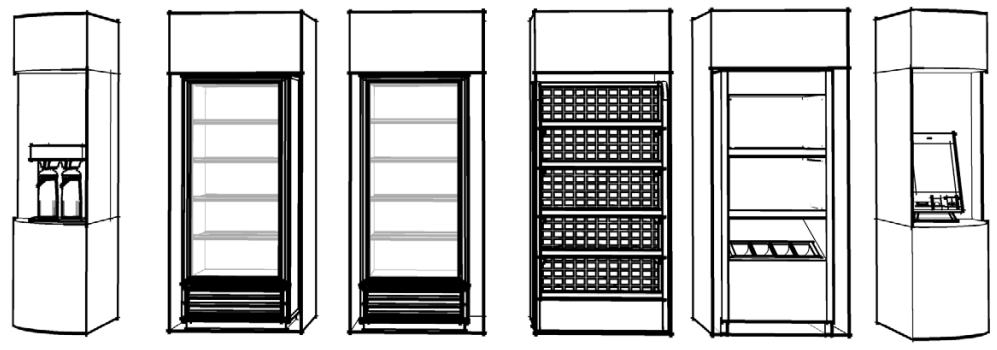
Modular design to adapt to any space. Adjustable header module for alcoves.



Shipped  
90% Assembled

# Free-Standing

All micro market modules are **free-standing**. No attachment to coolers, merchandisers or customer facilities.

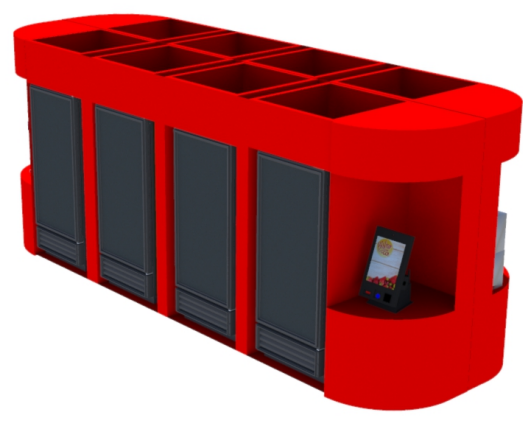


*Modules Shipped Assembled On A Pallet*

# Island Design

For center room applications.

Modular design can be expanded at any time.



POS Station



Optional  
Condiment Station



**Simple assembly** requiring small assortment of hand tools.  
Prices vary by quantity, model and customization choices.



# Standard Coca-Cola Designs

*Wellness*



## Marquee Signs

All micro markets include marquee signs. Designed by brand or company/organization.

*Fitness*



**Simple assembly** requiring small assortment of hand tools.  
Prices vary by quantity, model and customization choices.



# Standard Coca-Cola Designs



*On The Go*

## Options Include:

- Base Color
- Header Graphics
- Digital Displays
- Microwaves
- Snack Racks



**Interchangeable** graphic panels. Keep your micro market fresh.



# Custom Designs

We pride ourselves on creativity, attention to detail and build quality.

Contact Us To Order

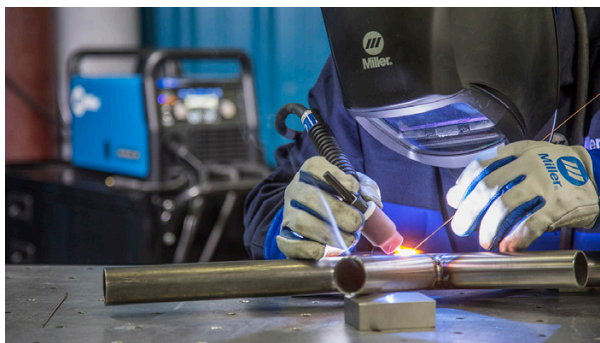


## Art Design Static/Digital

Graphic design is included with our products.

All graphic panels are **interchangeable**. Graphics are printed on Lexan for durability, similar to vend fronts.

Easily update your environment for a fresh look, **introduce** new products or **cross-sell** to the off-premise channel.



No more pressed wood kits that fall apart after your first cooler maintenance. Our products are built to last with steel, aluminum, high grade fasteners and powder coat finish.

All modules have optional casters to easily move for floor cleaning, maintenance or access to electrical.



ONPREMISE  
PRODUCTS

CLIENT: Coca Cola  
DATE: 04.07.20 VERSION: 2.00  
PROJECT: Refreshment Stop

# Vending Solutions

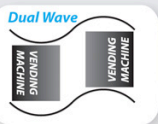
**Indoor** enclosures for vending machines and cooler placements. Standard Coca-Cola designs or custom. Prices vary by model and quantity.

Visit Our Vending Division  
for additional examples



## THE WAVE

The WAVE is a back to back configuration. Standard features include large, interchangeable graphics panels, free standing structures and easy assembly. Graphic panels can be designed to order or choose from our standard selection of branded designs. Additional options include our digital display package.



- Dual Machine
- Quad Machine



## Custom Designs Design-Build



V-VENDSIGHT

CLIENT: Coca Cola  
DATE: 02-20-10  
PROJECT: USA Kiosk



FRONT

## Theme Designs Suitcase

BACK



CLIENT: Coca Cola  
DATE: 12-27-09  
PROJECT: Refreshment Stop

# Vending Solutions

**Outdoor** solutions for vending machine and cooler placements. Standard Coca-Cola designs or custom. Prices vary by model and quantity.



- Optional Motorized Security Doors
- Stainless Steel Fasteners Standard
- Powder Coat Finish

# FLO Partnerships

Operators will choose Coca-Cola as their preferred partner when supported with the tools to succeed. Our designs can easily incorporate all food service selections.

Beverages, coffee, snacks and food will be displayed to maximize impulse purchases.



This rendering is intended for representation purposes only. Logos and images used in this design may not be suitable for final production.

Signature	_____
Print or Type Name	_____
Date	_____

PLEASE NOTE: Proof should



For accounts that are combination **vending/food service/micro market** we offer solutions for every channel.

On larger projects we send a project manager for a site survey to create a complete, efficient solution to maximize indoor/outdoor product sales.



## Options Include:

- Eaves
- Awnings
- Pole icons.





# Modular C-Stores

Create a **C-Store** or **Micro Market** where you need it. Optional designs include walk-in coolers for maximum capacity and selection. Each design is unique. Price vary by model, size and customization.



**OUTDOOR C-Store.** Includes enclosures for food service equipment with motorized rolling doors.

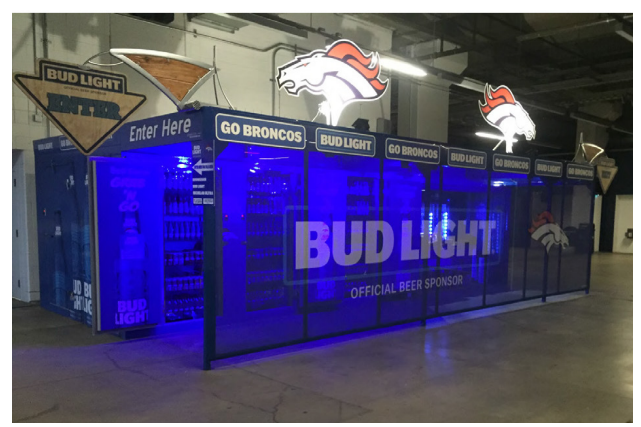


# Grab-N-Go

Speed of service increases dramatically with grab-n-go points of sale. We offer indoor/outdoor custom grab-n-go packages.

Venues, stadiums and center campus areas are excellent applications for this solution.

*Indoor/outdoor models available*



*Speed Of Service*



Multiple configurations available. Integrated POS stations or portable cashier stands.



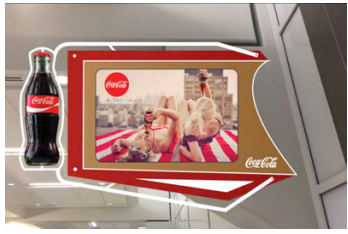
**Custom School Logos and Graphics Available!**



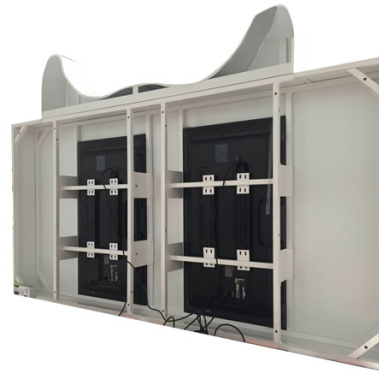
*Cold Inventory Solution*



# Custom Signs And Wallscapes



Hallway Signs



We like to refer to our signs as wall art. We create custom designs specifically for each application and space. Optional digital displays add the ability to remotely update video and images.



## Wallscapes

Maximize visibility with custom wallscapes. Our panel design wallscapes are the least intrusive to your customers facilities. Free standing billboards are available for temporary applications.





**Coca-Cola Supplier For Over 27 Years**



## Services

### **Layout/Design**

Send us the space and we will configure an efficient solution.



### **Installation**

Turn-key installation is offered for all of our products. We take the hassle out of working with multiple contractors.

## **Contact Us**

(619) 562-1486 Office

(619) 972-4346 Cell

buy@vendsight.com

[www.onpremiseproducts.com](http://www.onpremiseproducts.com)

[www.iconenclosures.com](http://www.iconenclosures.com)



**ICON**  
ENCLOSURES

*On Premise Products Inc. [www.onpremiseproducts.com](http://www.onpremiseproducts.com) Coca-Cola supplier for over 27 years*



**ONPREMISE**  
PRODUCTS

[WWW.ONPREMISEPRODUCTS.COM](http://WWW.ONPREMISEPRODUCTS.COM)