



**TL series**



## M-st-o-255

**Illustrate :** black frame

**Selling price :**

**Material description :**

1. PP frame and PP armrest
2. good quality mesh back and high density molded foam seat
3. tilt and lock mechanism
4. R330mm PP base and  $\Phi 60/25$  mm PA wheels
5. air spring 85-40mm

**Package :** 2pcs/1ctn

**Net weight (KG) :** 19.6

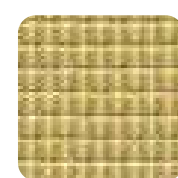
**Gross weight (KG) :** 21.6

**CBM :** 0.236

**Package Size :** 75\*50\*63

**Product Size :** 620\*605\*1165

### Backrest color



JH2101



JH2102



JH2103



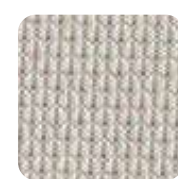
JH2104



JH2105



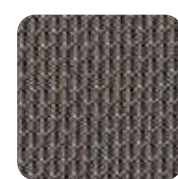
JH2106



JH2107



JH2108



JH2109



JH2110

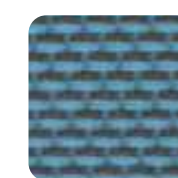


JH2100

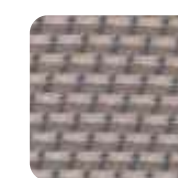
### Cushion color



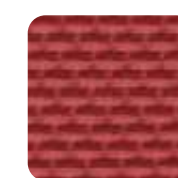
AED788-1



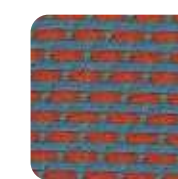
AED788-2



AED788-3



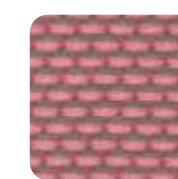
AED788-4



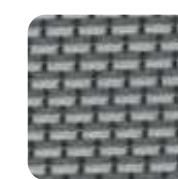
AED788-5



AED788-6



AED788-7



AED788-8



## M-st-o-256

**Illustrate :** grey frame

**Selling price :**

**Material description :**

1. PP frame and PP armrest
2. good quality mesh back and high density molded foam seat
3. tilt and lock mechanism
4. R330mm PP base and  $\Phi 60/25$  mm PA wheels
5. air spring 85-40mm

**Package :** 2pcs/1ctn

**Net weight (KG) :** 19.6

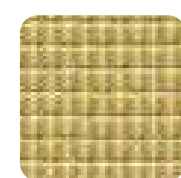
**Gross weight (KG) :** 21.6

**CBM :** 0.236

**Package Size :** 75\*50\*63

**Product Size :** 620\*605\*1165

### Backrest color



JH2101



JH2102



JH2103



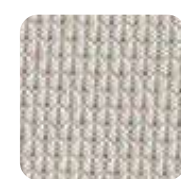
JH2104



JH2105



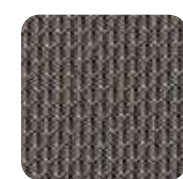
JH2106



JH2107



JH2108



JH2109



JH2110

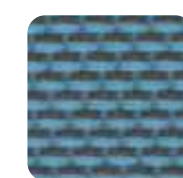


JH2100

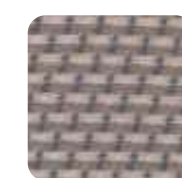
### Cushion color



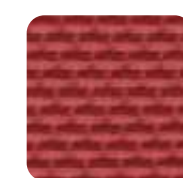
AED788-1



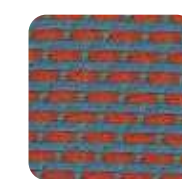
AED788-2



AED788-3



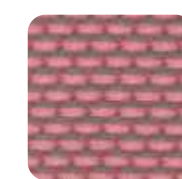
AED788-4



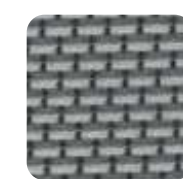
AED788-5



AED788-6



AED788-7



AED788-8



## M-st-o-260

**Illustrate :** grey frame

**Selling price :**

**Material description :**

1. PP frame, adjustable PA headrest and up and down armrest
2. big tilt angel 108°-138°for recline, PP+ EVA lumbar support
3. good quality mesh back and mesh seat
4. tilt and lock mechanism
5. R330mm PP base and Φ60/25 mm PA wheels
6. air spring 85-40mm

**Package :** 2pcs/1ctn

**Net weight (KG) :** 21.5

**Gross weight (KG) :** 23.5

**CBM :** 0.249

**Package Size :** 72\*55\*63

**Product Size :** 705\*625\*1085

## M-st-o-258

**Illustrate :** black frame

**Selling price :**

**Material description :**

1. PP frame, adjustable PA headrest and up and down armrest
2. big tilt angel 108°-138°for recline, PP+ EVA lumbar support
3. good quality mesh back and mesh seat
4. tilt and lock mechanism
5. R330mm PP base and Φ60/25 mm PA wheels
6. air spring 85-40mm

**Package :** 2pcs/1ctn

**Net weight (KG) :** 21.5

**Gross weight (KG) :** 23.5

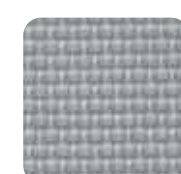
**CBM :** 0.249

**Package Size :** 72\*55\*63

**Product Size :** 705\*625\*1085



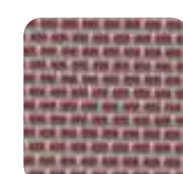
### Backrest color / Cushion color



YM93-40-14



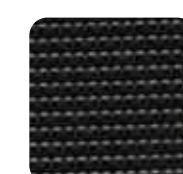
YM93-40-29



YM93-40-20



YM93-45-23



YM93-31A



## M -st-o-259

**Illustrate :** grey frame

**Selling price :**

**Material description :**

1. PP frame, adjustable PA headrest and up and down armrest
2. big tilt angel 108°-138°for recline, PP+ EVA lumbar support
3. good quality mesh back and high density molded foam seat
4. tilt and lock mechanism
5. R330mm PP base and Φ60/25 mm PA wheels
6. air spring 85-40mm

**Package :** 2pcs/1ctn

**Net weight (KG) :** 21.5

**Gross weight (KG) :** 23.5

**CBM :** 0.249

**Package Size :** 72\*55\*63

**Product Size :** 705\*625\*1085



## M -st-o-257

**Illustrate :** black frame

**Selling price :**

**Material description :**

1. PP frame, adjustable PA headrest and up and down armrest
2. big tilt angel 108°-138°for recline, PP+ EVA lumbar support
3. good quality mesh back and high density molded foam seat
4. tilt and lock mechanism
5. R330mm PP base and Φ60/25 mm PA wheels
6. air spring 85-40mm

**Package :** 2pcs/1ctn

**Net weight (KG) :** 21.5

**Gross weight (KG) :** 23.5

**CBM :** 0.249

**Package Size :** 72\*55\*63

**Product Size :** 705\*625\*1085



### Backrest color



### Cushion color





## M -st-o-261

**Illustrate :** black frame

**Selling price :**

**Material description :**

1. PP frame, up and down armrest
2. big tilt angel 108°-138°for recline, PP+ EVA lumbar support
3. good quality mesh back and high density molded foam seat
4. tilt and lock mechanism
5. R330mm PP base and Φ60/25 mm PA wheels
6. air spring 85-40mm

**Package :** 2pcs/1ctn

**Net weight (KG) :** 20

**Gross weight (KG) :** 22

**CBM :** 0.249

**Package Size :** 72\*55\*63

**Product Size :** 705\*580\*965



## M -st-o-262

**Illustrate :** grey frame

**Selling price :**

**Material description :**

1. PP frame, up and down armrest
2. big tilt angel 108°-138°for recline, PP+EVA lumbar support
3. good quality mesh back and high density molded foam seat
4. tilt and lock mechanism
5. R330mm PP base and Φ60/25 mm PA wheels
6. air spring 85-40mm

**Package :** 2pcs/1ctn

**Net weight (KG) :** 20

**Gross weight (KG) :** 22

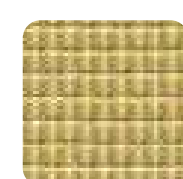
**CBM :** 0.249

**Package Size :** 72\*55\*63

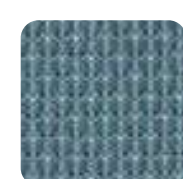
**Product Size :** 705\*580\*965



### Backrest color



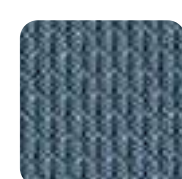
JH2101



JH2102



JH2103



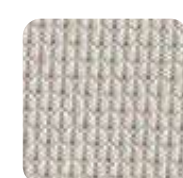
JH2104



JH2105



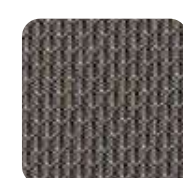
JH2106



JH2107



JH2108



JH2109



JH2110

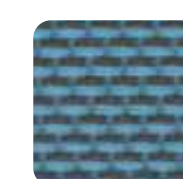


JH2100

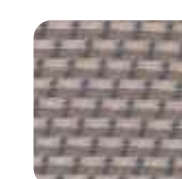
### Cushion color



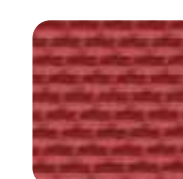
AED788-1



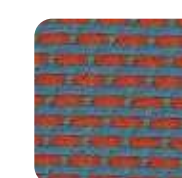
AED788-2



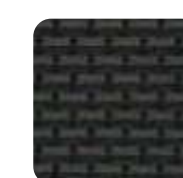
AED788-3



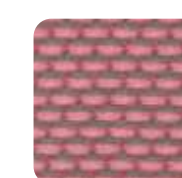
AED788-4



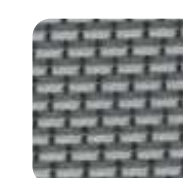
AED788-5



AED788-6



AED788-7



AED788-8



## M -st-o-29

**Illustrate :** black frame

**Selling price :**

**Material description :**

1. up and down PP headrest
2. PP backrest with nylon mesh, recline angel between 110-130°
3. PP shell with cutted foam
4. tilt and lock mechanism
5. PP armrest
6. class 3 air spring, pass SGS test
7. PA base with PA castors, pass 950kg static pressure

**Package :** 2 pcs / 1 carton

**Net weight (KG) :** 25.2

**Gross weight (KG) :** 27.2

**CBM :** 0.24

**Package Size :** 69\*56\*62

**Product Size :** 620\*650\*1105



## M -st-o-30

**Illustrate :** black frame

**Selling price :**

**Material description :**

1. PP backrest with nylon mesh, recline angel between 110-130°
2. PP shell with cutted foam
3. tilt and lock mechanism
4. PP armrest
5. class 3 air spring, pass SGS test
6. PA base with PA castors, pass 950kg static pressure

**Package :** 2 pcs / 1 carton

**Net weight (KG) :** 22.64

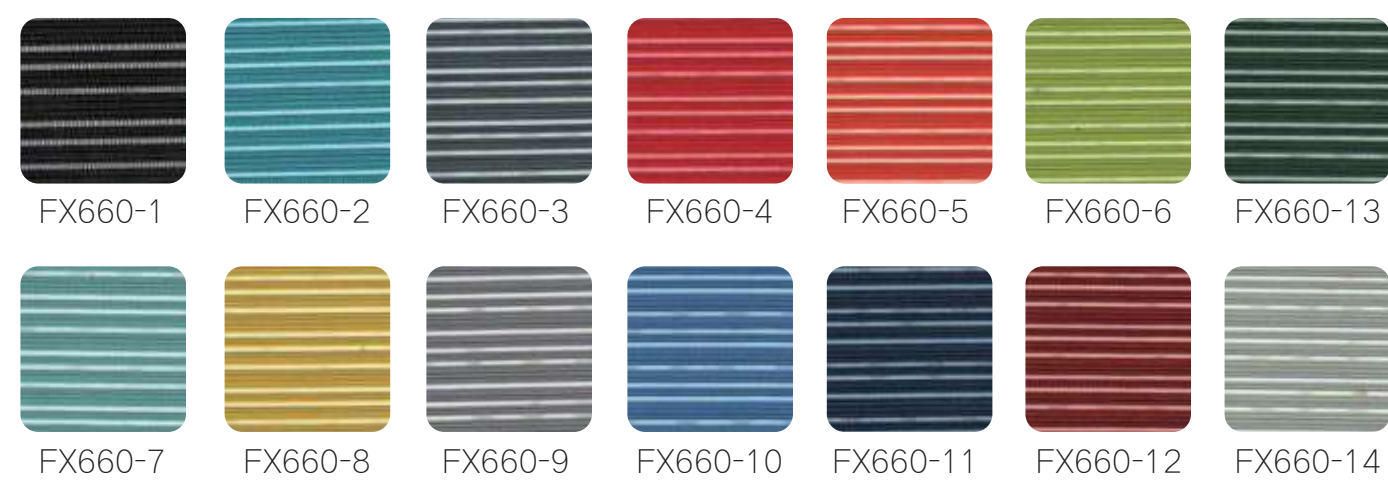
**Gross weight (KG) :** 24.64

**CBM :** 0.24

**Package Size :** 69\*56\*62

**Product Size :** 620\*650\*985

### Backrest color



### Cushion color





## M -st-o-31

**Illustrate :** black frame

**Selling price :**

**Material description :**

1. PP backrest with nylon mesh, recline angel between 110-130°
2. PP shell with cutted foam
3. PP armrest
4. black base

**Package :** 2 pcs / 1 carton

**Net weight (KG) :** 21.56

**Gross weight (KG) :** 23.56

**CBM :** 0.22

**Package Size :** 69\*52\*61

**Product Size :** 610\*600\*985

## M -st-o-32

**Illustrate :** grey frame

**Selling price :**

**Material description :**

1. up and down PP headrest
2. PP backrest with nylon mesh, recline angel between 110-130°
3. PP shell with cutted foam
4. tilt and lock mechanism
5. PP armrest
6. class 3 air spring, pass SGS test
7. aluminum base with PA castors, pass 950kg static pressure

**Package :** 2 pcs / 1 carton

**Net weight (KG) :** 25.2

**Gross weight (KG) :** 27.2

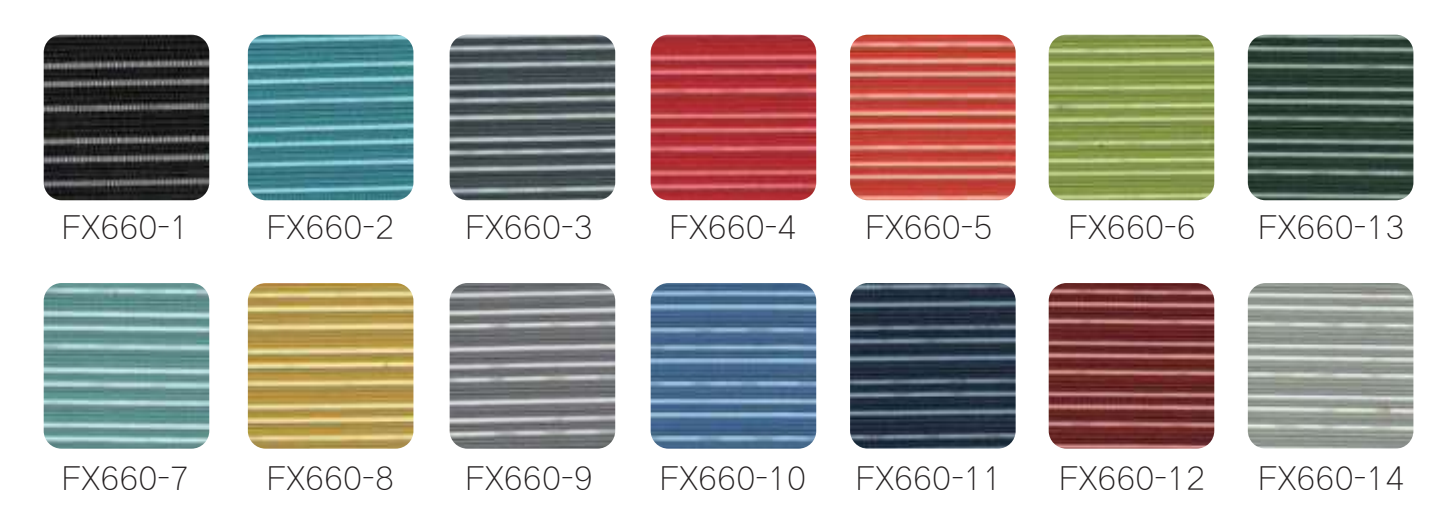
**CBM :** 0.24

**Package Size :** 69\*56\*62

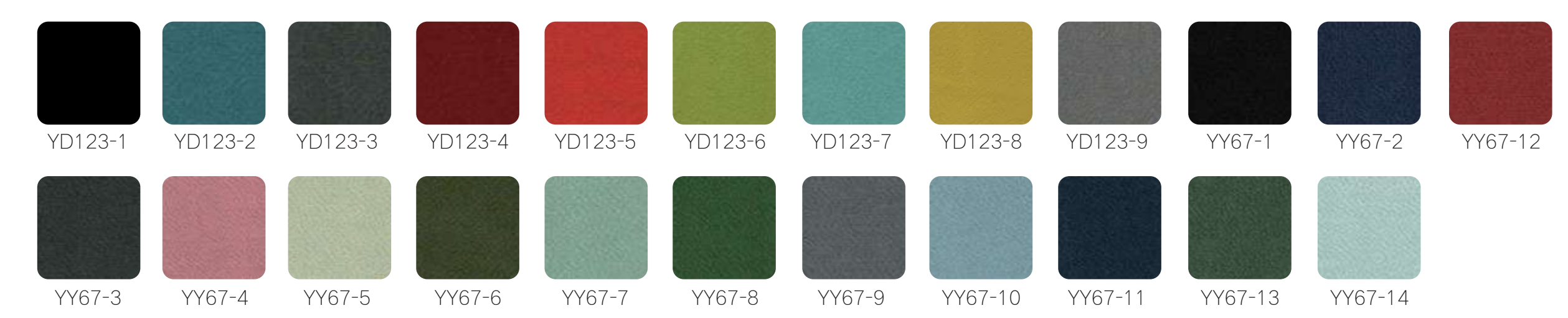
**Product Size :** 620\*650\*1105



### Backrest color



### Cushion color







## M -st-o-33

**Illustrate :** grey frame

**Selling price :**

**Material description :**

1. PP backrest with nylon mesh, recline angel between 110-130°
2. PP shell with cutted foam
3. tilt and lock mechanism
4. PP armrest
5. class 3 air spring, pass SGS test
6. aluminum base with PA castors, pass 950kg static pressure

**Package :** 2 pcs / 1 carton

**Net weight (KG) :** 22.64

**Gross weight (KG) :** 24.64

**CBM :** 0.24

**Package Size :** 69\*56\*62

**Product Size :** 620\*650\*985

## M -st-o-34

**Illustrate :** grey frame

**Selling price :**

**Material description :**

1. PP backrest with nylon mesh, recline angel between 110-130°
2. PP shell with cutted foam
3. PP armrest
4. chrome base

**Package :** 2 pcs / 1 carton

**Net weight (KG) :** 21.56

**Gross weight (KG) :** 23.56

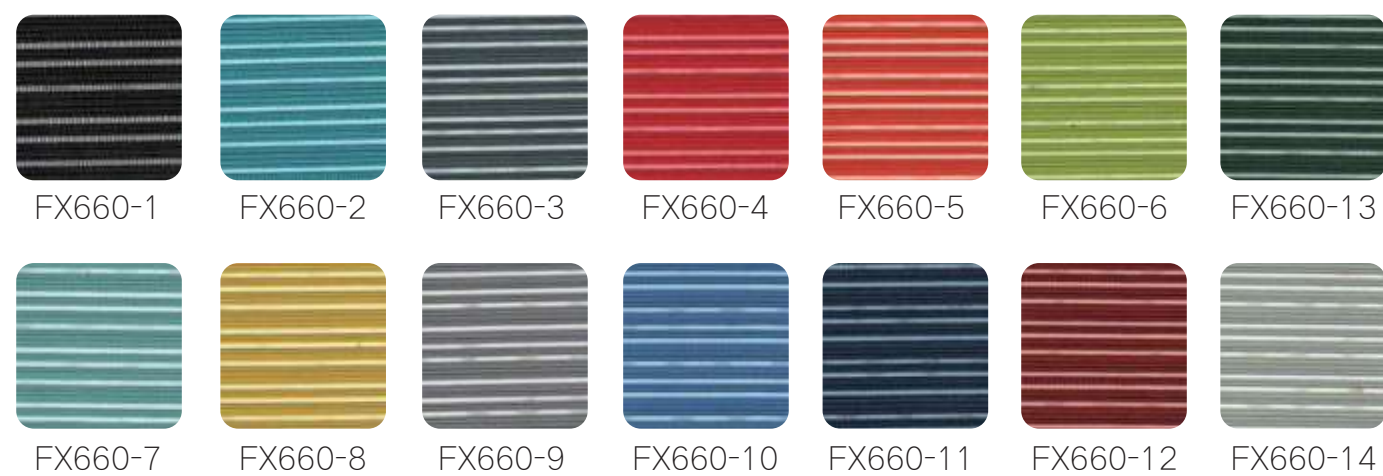
**CBM :** 0.22

**Package Size :** 69\*62\*52

**Product Size :** 610\*600\*985



### Backrest color



### Cushion color





## M -st-o-5

**Illustrate :** black frame

**Selling price :**

**Material description :**

1. up and down and rotate PP headrest
2. PA backrest, swing left and right with 5°, recline angle in 100°-120°, good quality nylon mesh back
3. molded foam with PP shell
4. 3 levels functional (with swing) mechanism
5. up and down PA armrest with PU surface
6. class 3 air spring passed SGS test
7. PA base with PA castors, pass 1300kg static pressure

**Package :** 2 pcs / 1 carton

**Net weight (KG) :** 14.35

**Gross weight (KG) :** 30.7

**CBM :** 0.29

**Package Size :** 75\*62\*63

**Product Size :** 670\*635\*1175



## M -st-o-6

**Illustrate :** black frame

**Selling price :**

**Material description :**

1. PA backrest, swing left and right with 5°, recline angle in 100°-120°, good quality nylon mesh back
2. molded foam with PP shell
3. 3 levels functional (with swing) mechanism
4. up and down PA armrest with PU surface
5. class 3 air spring passed SGS test
6. PA base with PA castors, pass 1300kg static pressure

**Package :** 2 pcs / 1 carton

**Net weight (KG) :** 13.54

**Gross weight (KG) :** 29.08

**CBM :** 0.29

**Package Size :** 75\*62\*63

**Product Size :** 670\*635\*1030



### Backrest color



JH2101



JH2102



JH2103



JH2104



JH2105



JH2106



JH2107



JH2108



JH2109

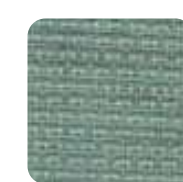


JH2110

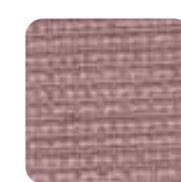


JH2100

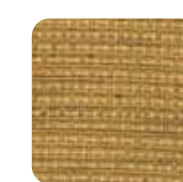
### Cushion color



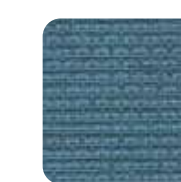
JH8600



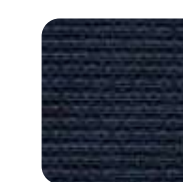
JH8601



JH8602



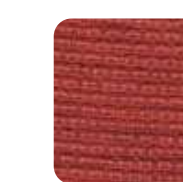
JH8603



JH8604



JH8605



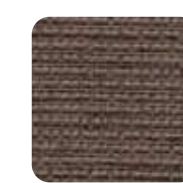
JH8606



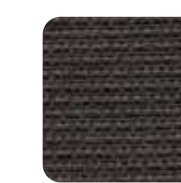
JH8607



JH8608



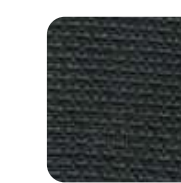
JH8609



JH8610



JH8611



JH8612



JH8613



## M -st-o-7

**Illustrate :** grey frame

**Selling price :**

**Material description :**

1. up and down and rotate PP headrest
2. PA backrest, swing left and right with 5°, recline angle in 100 °-120 °,good quality nylon mesh back
3. molded foam with PP shell
4. 3 levels functional (with swing) mechanism
5. up and down PA armrest with PU surface
6. class 3 air spring passed SGS test
7. aluminum base with PA castors, pass 1300kg static pressure

**Package :** 2 pcs / 1 carton

**Net weight (KG) :** 14.74

**Gross weight (KG) :** 31.48

**CBM :** 0.29

**Package Size :** 75\*62\*63

**Product Size :** 670\*635\*1175

## M -st-o-8

**Illustrate :** grey frame

**Selling price :**

**Material description :**

1. PA backrest, swing left and right with 5°, recline angle in 100 °-120 °,good quality nylon mesh back
2. molded foam with PP shell
3. 3 levels functional (with swing) mechanism
4. up and down PA armrest with PU surface
5. class 3 air spring passed SGS test
6. aluminum base with PA castors, pass 1300kg static pressure

**Package :** 2 pcs / 1 carton

**Net weight (KG) :** 13.93

**Gross weight (KG) :** 29.86

**CBM :** 0.29

**Package Size :** 75\*62\*63

**Product Size :** 670\*635\*1030



### Backrest color



### Cushion color





## M -st-o-91

**Illustrate :** black frame PP leg

**Selling price :**

**Material description :**

storage: whole black

1. nylon backframe with high quality mesh back
2. cutted foam Fabric seat cushion
3. Adjustable waist support
4. 170 degree laying down metal mechanism, class 3 gas spring, chrome footrest support 30kg
5. nylon base with nylon castors

**Package :** 1 pc / 1 carton

**Net weight (KG) :** 13.75

**Gross weight (KG) :** 16

**CBM :** 0.261

**Package Size :** 83\*50\*63

**Product Size :** 620\*700\*1070



## M -st-o-92

**Illustrate :** white frame aluminum leg

**Selling price :**

**Material description :**

storage: whole black

1. nylon backframe with high quality mesh back
2. cutted foam Fabric seat cushion
3. Adjustable waist support
4. 170 degree laying down metal mechanism, class 3 gasspring, chrome footrest support 30kg
5. nylon base with nylon castors

**Package :** 1 pc / 1 carton

**Net weight (KG) :** 13.75

**Gross weight (KG) :** 16

**CBM :** 0.261

**Package Size :** 83\*50\*63

**Product Size :** 620\*700\*1070

### Backrest color



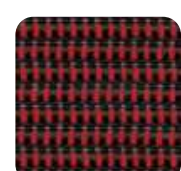
YM99-21



YM99-20-5

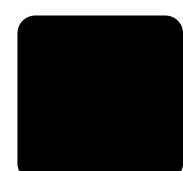


YM99-25-1



YM99-22-3

### Cushion color



FX363-1



FX363-2



FX363-3



FX363-4



FX363-5



FX363-6



FX363-7



FX363-8



FX363-9



FX363-10



FX363-11



FX363-12



FX363-13



FX363-14



FX363-15



FX363-16



FX363-17



FX363-18



## M -st-o-93

**Illustrate :** black frame PP leg

**Selling price :**

**Material description :**

storage: whole black

1. nylon backframe with high quality mesh back
2. mesh seat
3. Adjustable waist support
4. 170 degree laying down metal mechanism, class 3 gasspring, chrome footrest support 30kg
5. nylon base with nylon castors

**Package :** 1 pc / 1 carton

**Net weight (KG) :** 13.05

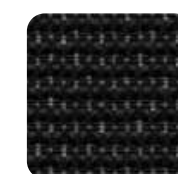
**Gross weight (KG) :** 15.65

**CBM :** 0.261

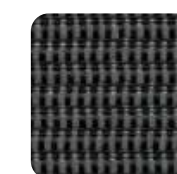
**Package Size :** 83\*50\*63

**Product Size :** 620\*700\*1070

**Backrest color**



YM99-21



YM99-20-5



YM99-25-1

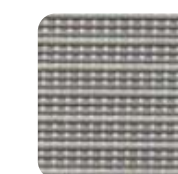


YM99-22-3

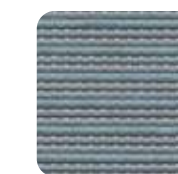
**Cushion color**



M3666-003



M3666-001



M3666-002

## M -st-o-94

**Illustrate :** white frame aluminum leg

**Selling price :**

**Material description :**

storage: whole black

1. nylon backframe with high quality mesh back
2. mesh seat
3. Adjustable waist support
4. 170 degree laying down metal mechanism, class 3 gasspring, chrome footrest support 30kg
5. nylon base with nylon castors

**Package :** 1 pc / 1 carton

**Net weight (KG) :** 13.05

**Gross weight (KG) :** 15.65

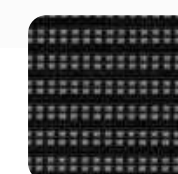
**CBM :** 0.261

**Package Size :** 83\*50\*63

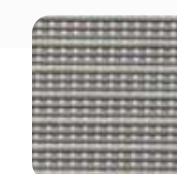
**Product Size :** 620\*700\*1070



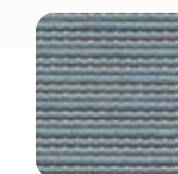
**Backrest color / Cushion color**



M3666-003



M3666-001



M3666-002



## M -st-o-67

**Selling price :**

**Material description :**

storage: whole black, or grey back black seat

1. PP headrest.
2. PP backframe with high quality mesh finished
3. cutted foam Fabric seat cushion
4. Adjustable waist support
5. 170 degree laying down mechanism, chrome footrest support 30kg
6. Nylon base with PA castors

**Package :** 1 pc / 1 carton

**Net weight (KG) :** 15

**Gross weight (KG) :** 18.2

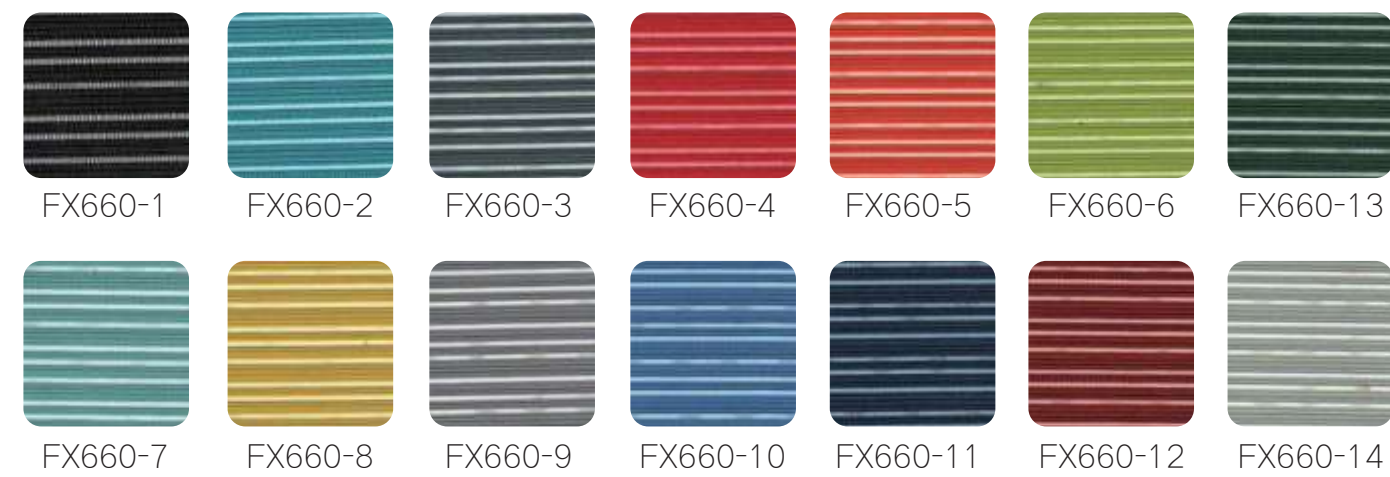
**CBM :** 0.232

**Package Size :** 92\*40\*63

**Product Size :** 650\*650\*1180



### Backrest color



### Cushion color





## M -st-o-68

**Illustrate :** black frame nylon base

**Selling price :**

**Material description :**

storage: whole black

1. PP headrest.
2. PP backframe with high quality mesh finished
3. mesh seat
4. Adjustable waist support
5. 170 degree laying down mechanism, chrome footrest support 30kg
6. Nylon base with PA castors

**Package :** 1 pc / 1 carton

**Net weight (KG) :** 16.3

**Gross weight (KG) :** 18.8

**CBM :** 0.261

**Package Size :** 92\*45\*63

**Product Size :** 650\*650\*1180



## M -st-o-69

**Illustrate :** black frame aluminum base

**Selling price :**

**Material description :**

storage: whole black

1. PP headrest.
2. PP backframe with high quality mesh finished
3. mesh seat
4. Adjustable waist support
5. 170 degree laying down mechanism, chrome footrest support 30kg
6. Nylon base with PA castors

**Package :** 1 pc / 1 carton

**Net weight (KG) :** 16.3

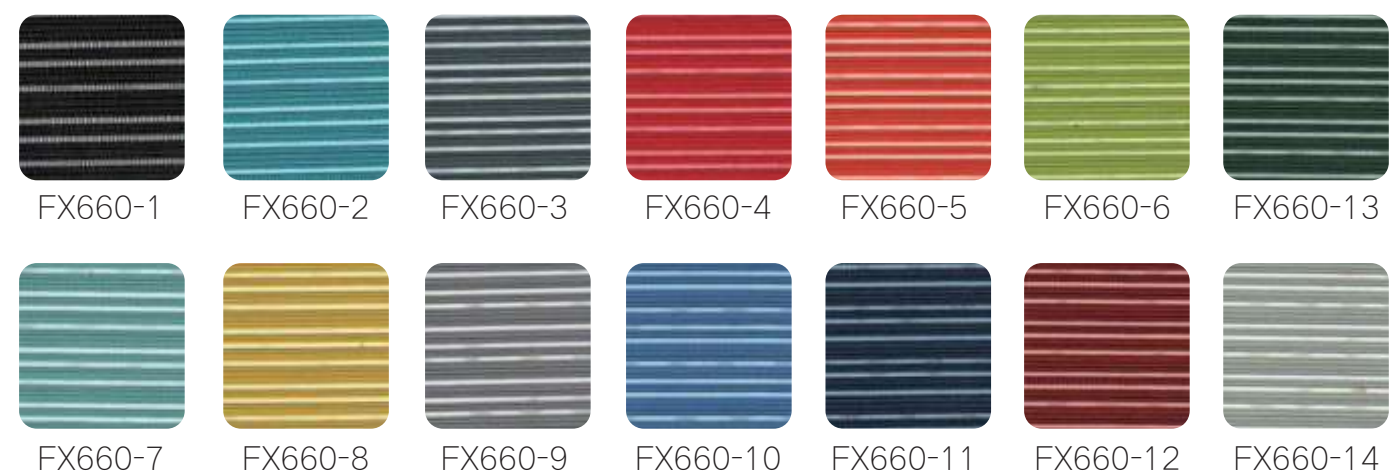
**Gross weight (KG) :** 18.8

**CBM :** 0.261

**Package Size :** 92\*45\*63

**Product Size :** 650\*650\*1180

### Backrest color



### Cushion color





## M -st-o-70

**Illustrate :** black frame

**Selling price :**

**Material description :**

1. PA headrest with moulded foam, fixed armrests
2. new PA back frame with mesh finished, adjustable lumbar support
3. moulded foam fabric sliding seat cushion
4. multifunctional synchronized mechanism with level 3 lock system
5. aluminium base pass 1800kg static pressure with PU Castor, class 3 gas spring pass 100,000 times test without broken

**Package :** 1 pc / 1 carton

**Net weight (KG) :** 19.3

**Gross weight (KG) :** 21.3

**CBM :** 0.187

**Package Size :** 78\*38\*63

**Product Size :** 740\*630\*1190



## M -st-o-71

**Illustrate :** white frame

**Selling price :**

**Material description :**

1. PA headrest with moulded foam, fixed armrests
2. new PA back frame with mesh finished, adjustable lumbar support
3. moulded foam fabric sliding seat cushion
4. multifunctional synchronized mechanism with level 3 lock system
5. aluminium base pass 1800kg static pressure with PU Castor, class 3 gas spring pass 100,000 times test without broken

**Package :** 1 pc / 1 carton

**Net weight (KG) :** 19.3

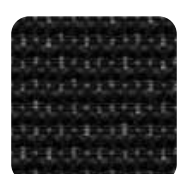
**Gross weight (KG) :** 21.3

**CBM :** 0.187

**Package Size :** 78\*38\*63

**Product Size :** 740\*630\*1190

### Backrest color



YM99-21



YM99-20-5

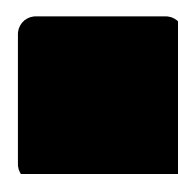


YM99-25-1



YM99-22-3

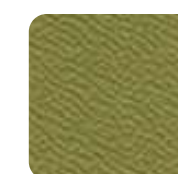
### Cushion color



MY-01



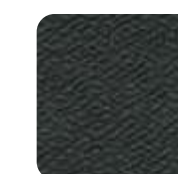
MY-02



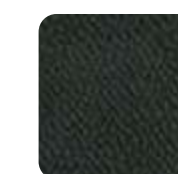
MY-03



MY-04



MY-06



MY-09





## M -st-o-72

**Illustrate :** black frame

**Selling price :**

**Material description :**

1. fixed PP armrests
2. NEW PA back frame with mesh finished
3. moulded foam fabric sliding seat cushion
4. Multifunctional synchronized mechanism
5. Aluminium base with PU Castor

**Package :** 1 pc / 1 carton

**Net weight (KG) :** 18.8

**Gross weight (KG) :** 20.8

**CBM :** 0.187

**Package Size :** 78\*38\*63

**Product Size :** 740\*630\*1020

## M -st-o-73

**Illustrate :** white frame

**Selling price :**

**Material description :**

1. fixed PP armrests
2. NEW PA back frame with mesh finished
3. moulded foam fabric sliding seat cushion
4. Multifunctional synchronized mechanism
5. Aluminium base with PU Castor

**Package :** 1 pc / 1 carton

**Net weight (KG) :** 18.8

**Gross weight (KG) :** 20.8

**CBM :** 0.187

**Package Size :** 78\*38\*63

**Product Size :** 740\*630\*1020



### Backrest color



YM99-21



YM99-20-5



YM99-25-1



YM99-22-3

### Cushion color



MY-01



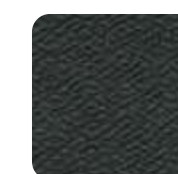
MY-02



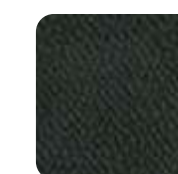
MY-03



MY-04



MY-06



MY-09



## M -st-o-74

**Illustrate :** black frame

**Selling price :**

**Material description :**

1. PU surface armrests
2. NEW PA back frame with mesh finished
3. moulded foam fabric seat cushion
4. Multifunctional synchronized mechanism
5. chrome leg

**Package :** 2 pcs / 1 carton

**Net weight (KG) :** 28

**Gross weight (KG) :** 58

**CBM :** 0.303

**Package Size :** 73\*68\*61

**Product Size :** 670\*500\*1040

## M -st-o-75

**Illustrate :** white frame

**Selling price :**

**Material description :**

1. PU surface armrests
2. NEW PA back frame with mesh finished
3. moulded foam fabric seat cushion
4. Multifunctional synchronized mechanism
5. chrome leg

**Package :** 2 pcs / 1 carton

**Net weight (KG) :** 28

**Gross weight (KG) :** 58

**CBM :** 0.303

**Package Size :** 73\*68\*61

**Product Size :** 670\*500\*1040



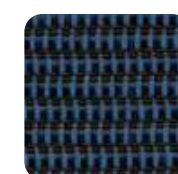
### Backrest color



YM99-21



YM99-20-5



YM99-25-1



YM99-22-3

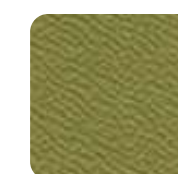
### Cushion color



MY-01



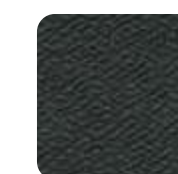
MY-02



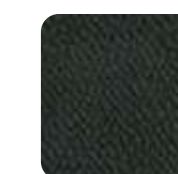
MY-03



MY-04



MY-06



MY-09



## M -st-o-76

**Illustrate :** black frame

**Selling price :**

**Material description :**

1. PA headrest with moulded foam, adjustable 3D armrests
2. new PA back frame with mesh finished, adjustable lumbar support
3. mesh sliding seat cushion
4. multifunctional synchronized mechanism with level 3 lock system
5. aluminium base with PU Castor

**Package :** 1 pc / 1 carton

**Net weight (KG) :** 20.3

**Gross weight (KG) :** 22.3

**CBM :** 0.187

**Package Size :** 78\*38\*63

**Product Size :** 740\*630\*1190



## M -st-o-77

**Illustrate :** white frame

**Selling price :**

**Material description :**

1. PA headrest with moulded foam, adjustable 3D armrests
2. new PA back frame with mesh finished, adjustable lumbar support
3. mesh sliding seat cushion
4. multifunctional synchronized mechanism with level 3 lock system
5. aluminium base with PU Castor

**Package :** 1 pc / 1 carton

**Net weight (KG) :** 20.3

**Gross weight (KG) :** 22.3

**CBM :** 0.187

**Package Size :** 78\*38\*63

**Product Size :** 740\*630\*1190



## M -st-o-78

**Illustrate :** black frame

**Selling price :**

**Material description :**

1. up and down PP armrests
2. NEW PA back frame with mesh finished
3. mesh sliding seat cushion
4. Multifunctional synchronized mechanism
5. Aluminium base with PU Castor

**Package :** 1 pc / 1 carton

**Net weight (KG) :** 19.5

**Gross weight (KG) :** 21.5

**CBM :** 0.187

**Package Size :** 78\*38\*63

**Product Size :** 740\*630\*1020



## M -st-o-79

**Illustrate :** white frame

**Selling price :**

**Material description :**

1. up and down PP armrests
2. NEW PA back frame with mesh finished
3. mesh sliding seat cushion
4. Multifunctional synchronized mechanism
5. Aluminium base with PU Castor

**Package :** 1 pc / 1 carton

**Net weight (KG) :** 19.5

**Gross weight (KG) :** 21.5

**CBM :** 0.187

**Package Size :** 78\*38\*63

**Product Size :** 740\*630\*1020



**Backrest color / Cushion color**



M3666-003



M3666-001



M3666-002



## M -st-o-95

**Selling price :**

**Material description :**

- storage: whole black
- 1. PA backframe with lumbar support
- 2. flip up PP armrest with soft surface
- 3. Molded foam Fabric seat cushion with PP shell support
- 4. tilt and lock mechanism with class 3 gas spring
- 5. Nylon base with PA castors

**Package :** 2 pcs / 1 carton

**Net weight (KG) :** 11.05

**Gross weight (KG) :** 24.1

**CBM :** 0.261

**Package Size :** 69\*62\*61

**Product Size :** 635\*600\*970



## M -st-o-96

**Selling price :**

**Material description :**

- storage: whole black
- 1. PA backframe with lumbar support
- 2. flip up PP armrest with soft surface
- 3. Molded foam Fabric seat cushion with PP shell support
- 4. black leg

**Package :** 2 pcs / 1 carton

**Net weight (KG) :** 10.35

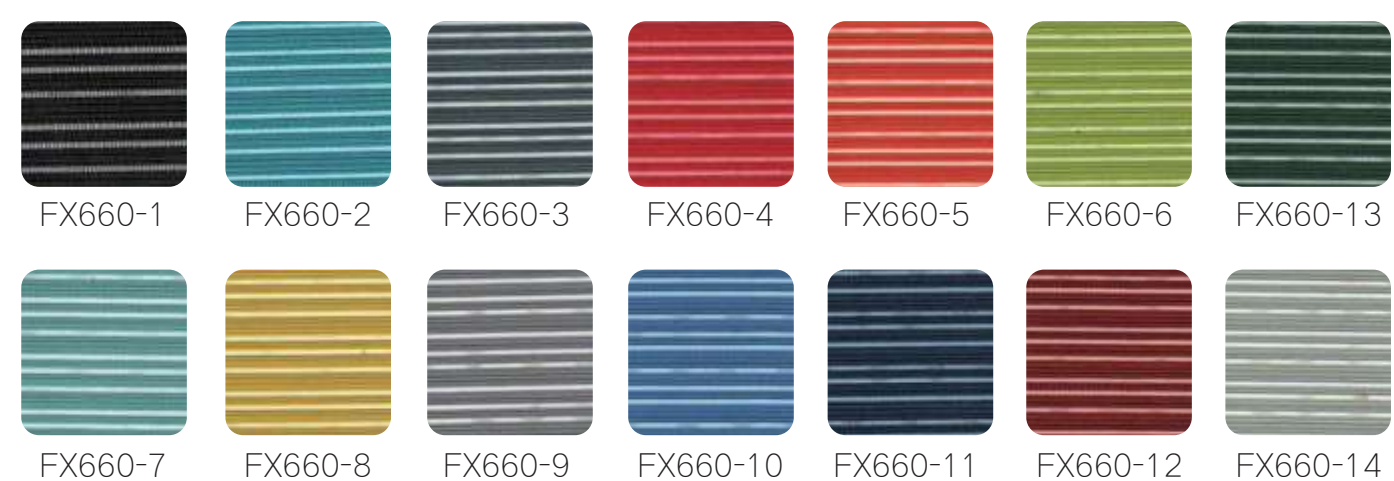
**Gross weight (KG) :** 22.7

**CBM :** 0.222

**Package Size :** 69\*62\*52

**Product Size :** 635\*600\*1000

### Backrest color



### Cushion color





## M -st-o-97

**Selling price :**

**Material description :**

storage: whole grey

1. PA backframe with lumbar support
2. flip up PP armrest with soft surface
3. Molded foam Fabric seat cushion with PP shell support
4. tilt and lock mechanism with class 3 gas spring
5. aluminum base with PA castors

**Package :** 2 pcs / 1 carton

**Net weight (KG) :** 11.9

**Gross weight (KG) :** 25.8

**CBM :** 0.261

**Package Size :** 69\*62\*61

**Product Size :** 635\*600\*970



## M -st-o-98

**Selling price :**

**Material description :**

1. PA backframe with lumbar support
2. flip up PP armrest with soft surface
3. Molded foam Fabric seat cushion with PP shell support
4. chrome leg

**Package :** 2 pcs / 1 carton

**Net weight (KG) :** 10.65

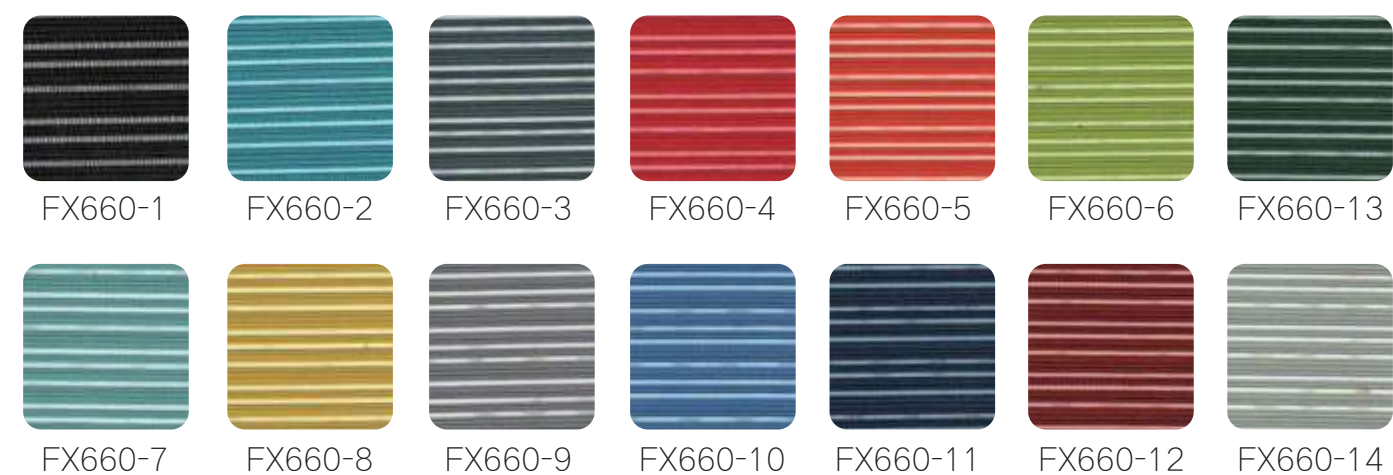
**Gross weight (KG) :** 23.3

**CBM :** 0.222

**Package Size :** 69\*62\*52

**Product Size :** 635\*600\*1000

### Backrest color



### Cushion color





## M -st-o-99

**Selling price :**

**Material description :**

- storage: whole black
- 1. PA backframe with lumbar support
- 2. fix PP armrest with brown surface
- 3. Molded foam Fabric seat cushion with PP shell support
- 4. tilt and lock mechanism with class 3 gas spring
- 5. PA base with PA castors

**Package :** 2 pcs / 1 carton

**Net weight (KG) :** 11.45

**Gross weight (KG) :** 24.9

**CBM :** 0.261

**Package Size :** 69\*62\*61

**Product Size :** 650\*610\*970



## M -st-o-100

**Selling price :**

**Material description :**

- storage: whole black
- 1. PA backframe with lumbar support
- 2. fix PP armrest with brown surface
- 3. Molded foam Fabric seat cushion with PP shell support
- 4. black leg

**Package :** 2 pcs / 1 carton

**Net weight (KG) :** 10.85

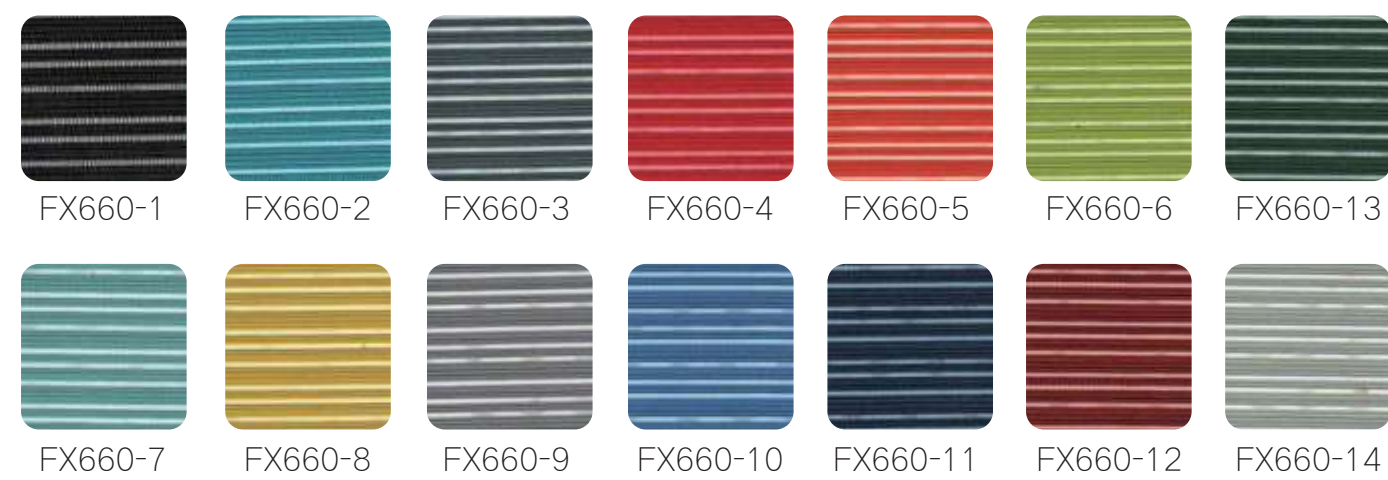
**Gross weight (KG) :** 23.7

**CBM :** 0.222

**Package Size :** 69\*62\*52

**Product Size :** 650\*560\*980

### Backrest color



### Cushion color





## M -st-o-101

**Selling price :**

**Material description :**

1. PA backframe with lumbar support
2. fix PP armrest with brown surface
3. Molded foam Fabric seat cushion with PP shell support
4. tilt and lock mechanism with class 3 gas spring
5. aluminum base with PA castors

**Package :** 2 pcs / 1 carton

**Net weight (KG) :** 11.75

**Gross weight (KG) :** 25.5

**CBM :** 0.261

**Package Size :** 69\*62\*61

**Product Size :** 650\*610\*970

## M -st-o-102

**Selling price :**

**Material description :**

1. PA backframe with lumbar support
2. fix PP armrest with brown surface
3. Molded foam Fabric seat cushion with PP shell support
4. chrome leg

**Package :** 2 pcs / 1 carton

**Net weight (KG) :** 11.15

**Gross weight (KG) :** 24.3

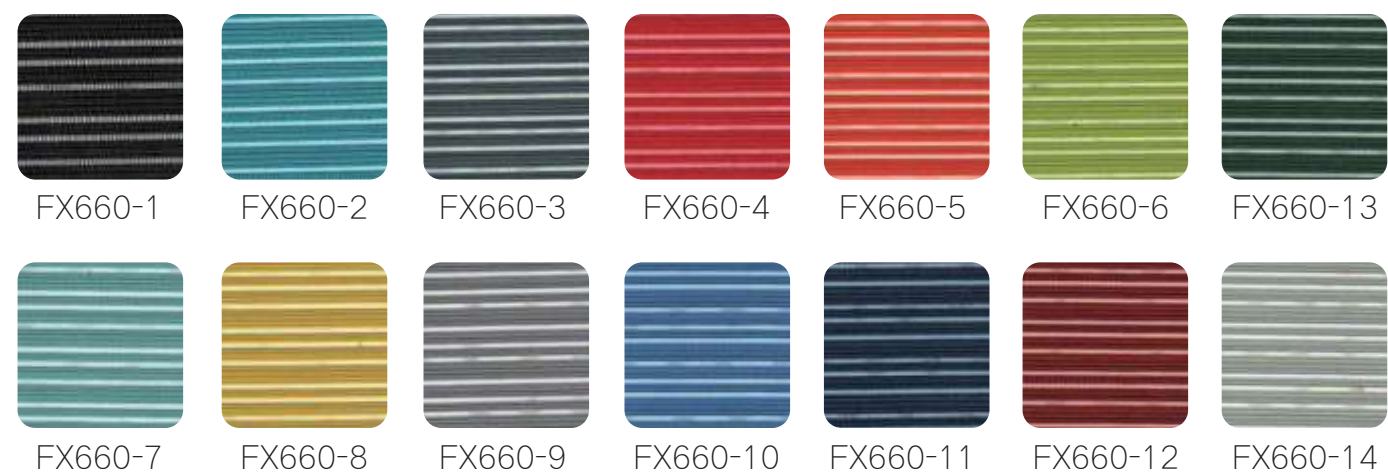
**CBM :** 0.222

**Package Size :** 69\*62\*52

**Product Size :** 650\*560\*980



### Backrest color



### Cushion color





## M -st-o-86

**Illustrate :** black frame

**Selling price :**

**Material description :**

storage: whole black

1. up and down PA headrest and fixed PP armrest
2. PP backframe with high quality mesh back
3. cutted foam Fabric seat cushion with PP shell support
4. tilt and lock mechanism
5. PP base with nylon castors (if white frame use aluminum base)

**Package :** 2 pcs / 1 carton

**Net weight (KG) :** 12.7

**Gross weight (KG) :** 27.4

**CBM :** 0.282

**Package Size :** 76\*58\*64

**Product Size :** 680\*650\*1140

## M -st-o-87

**Illustrate :** white frame

**Selling price :**

**Material description :**

storage: whole black

1. up and down PA headrest and fixed PP armrest
2. PP backframe with high quality mesh back
3. cutted foam Fabric seat cushion with PP shell support
4. tilt and lock mechanism
5. PP base with nylon castors (if white frame use aluminum base)

**Package :** 2 pcs / 1 carton

**Net weight (KG) :** 12.7

**Gross weight (KG) :** 27.4

**CBM :** 0.282

**Package Size :** 76\*58\*64

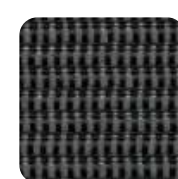
**Product Size :** 680\*650\*1140



### Backrest color



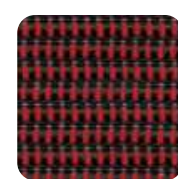
YM99-21



YM99-20-5



YM99-25-1



YM99-22-3

### Cushion color



MY-01



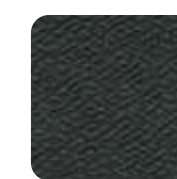
MY-02



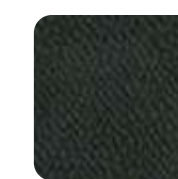
MY-03



MY-04



MY-06



MY-09





## M -st-o-169

**Illustrate :** black frame

**Selling price :**

**Material description :**

1. Backrest: PP lumbar support, 8cm up and down adjustable;
2. Seat: PP shell + plywood;
3. mechanism: class 3 PA mechanism, explosion-proof;
4. PP Armrest
5. Gas lift: class 3 gas lift
6. PA base
7. PA castors

**Package :** 2 pcs / 1 carton

**Net weight (KG) :** 12.2

**Gross weight (KG) :** 14.2

**CBM :** 0.225

**Package Size :** 67\*55\*61

**Product Size :** 625\*580\*955



## M -st-o-170

**Illustrate :** black frame

**Selling price :**

**Material description :**

1. Backrest: PP lumbar support, 8cm up and down adjustable;
2. Seat: PP shell + plywood;
3. PP Armrest
4. 2.0mm black leg

**Package :** 2 pcs / 1 carton

**Net weight (KG) :** 11.26

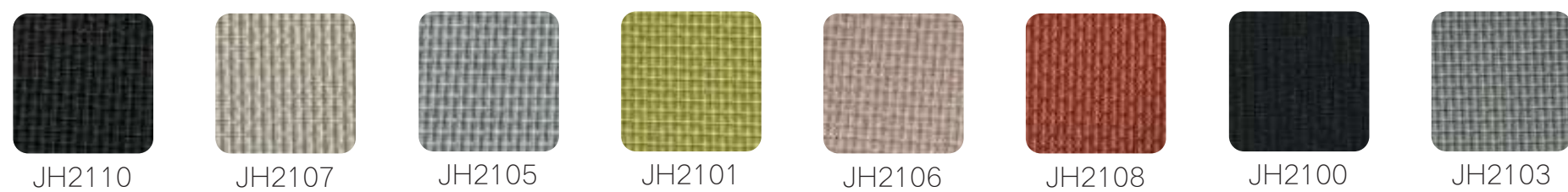
**Gross weight (KG) :** 13.26

**CBM :** 0.251

**Package Size :** 75\*62\*54

**Product Size :** 595\*580\*970

### Backrest color



### Cushion color





## M -st-o-171

**Illustrate :** grey frame

**Selling price :**

**Material description :**

1. Backrest: PP lumbar support, 8cm up and down adjustable;
2. Seat:PP shell + plywood;
3. mechanism: class 3 PA mechanism, explosion-proof;
4. PP Armrest
5. Gas lift: class 3 gas lift
6. aluminum base
7. PA castors

**Package :** 2 pcs / 1 carton

**Net weight (KG) :** 12.2

**Gross weight (KG) :** 14.2

**CBM :** 0.225

**Package Size :** 67\*55\*61

**Product Size :** 625\*580\*955

## M -st-o-172

**Illustrate :** grey frame

**Selling price :**

**Material description :**

1. Backrest: PP lumbar support, 8cm up and down adjustable;
2. Seat:PP shell + plywood;
3. PP Armrest
4. 2.0mm chrome leg

**Package :** 2 pcs / 1 carton

**Net weight (KG) :** 11.8

**Gross weight (KG) :** 13.8

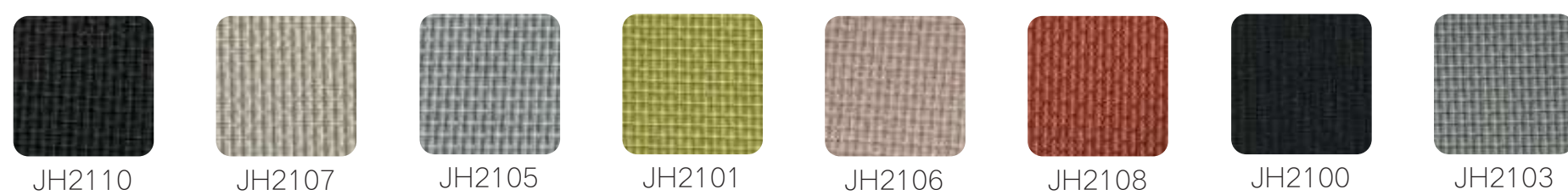
**CBM :** 0.251

**Package Size :** 75\*62\*54

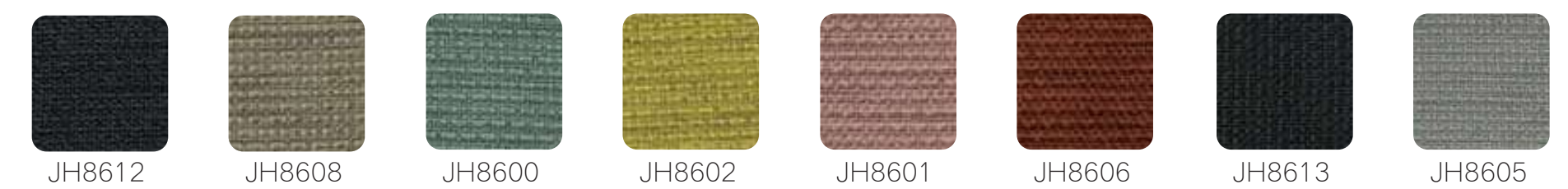
**Product Size :** 595\*580\*970



### Backrest color



### Cushion color





## M -st-o-43

**Selling price :**

**Material description :**

1. up and down headrest.
2. nylon back frame with imported mesh back, adjust lumbar support with clothes hanger
3. moulded foam fabric seat cushion with PP shell support
4. Fixed PP armrest
5. tilt and lock mechanism
6. nylon base with nylon castors

**Package :** 2 pcs / 1 carton

**Net weight (KG) :** 14.5

**Gross weight (KG) :** 33.8

**CBM :** 0.293

**Package Size :** 75\*62\*63

**Product Size :** 660\*630\*1220



## M -st-o-44

**Selling price :**

**Material description :**

1. nylon back frame with imported mesh back, adjust lumbar support with clothes hanger
2. moulded foam fabric seat cushion with PP shell support
3. Fixed PP armrest
4. tilt and lock mechanism
5. nylon base with nylon castors

**Package :** 2 pcs / 1 carton

**Net weight (KG) :** 13.25

**Gross weight (KG) :** 31.3

**CBM :** 0.293

**Package Size :** 75\*62\*63

**Product Size :** 660\*630\*1010



## M -st-o-45

**Selling price :**

**Material description :**

storage: whole black

1. nylon backframe with imported mesh back, up and down lumbar support
2. High quality Fabric seat cushion with PP shell support
3. PU surface armrest
4. moulded foam fabric seat cushion with PP shell support
5. Chromed base

**Package :** 2 pcs / 1 carton

**Net weight (KG) :** 12.7

**Gross weight (KG) :** 27.8

**CBM :** 0.303

**Package Size :** 73\*68\*61

**Product Size :** 580\*620\*990

Cushion color



YD124-1



YD124-2



## M -st-o-46

**Selling price :**

**Material description :**

1. up and down headrest.
2. nylon back frame with double mesh back, adjust lumbar support with clothes hanger
3. cutted foam fabric seat cushion with PP shell support
4. Fixed PP armrest
5. tilt and lock mechanism
6. nylon base with nylon castors

**Package :** 2 pcs / 1 carton

**Net weight (KG) :** 14.5

**Gross weight (KG) :** 33.8

**CBM :** 0.293

**Package Size :** 75\*62\*63

**Product Size :** 660\*630\*1220



## M -st-o-47

**Selling price :**

**Material description :**

1. nylon back frame with double mesh back, adjust lumbar support with clothes hanger
2. cutted foam fabric seat cushion with PP shell support
3. Fixed PP armrest
4. tilt and lock mechanism
5. nylon base with nylon castors

**Package :** 2 pcs / 1 carton

**Net weight (KG) :** 13.25

**Gross weight (KG) :** 31.3

**CBM :** 0.293

**Package Size :** 75\*62\*63

**Product Size :** 660\*630\*1010



## M -st-o-48

**Selling price :**

**Material description :**

1. nylon backframe with double mesh back, up and down lumbar support
2. High quality Fabric seat cushion with PP shell support
3. PU surface armrest
4. cutted foam fabric seat cushion with PP shell support
5. Chromed base

**Package :** 2 pcs / 1 carton

**Net weight (KG) :** 13.25

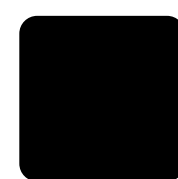
**Gross weight (KG) :** 31.3

**CBM :** 0.303

**Package Size :** 73\*68\*61

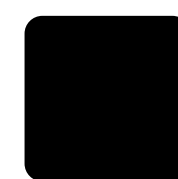
**Product Size :** 580\*620\*990

**Backrest color**



JF295-1

**Cushion color**



MY-01



## M -st-o-50

**Selling price :**

**Material description :**

1. nylon back frame with imported mesh back, adjust lumbar support with clothes hanger
2. moulded foam fabric seat cushion with PP shell support
3. up and down nylon armrest
4. 3 levels functional mechanism
5. nylon base with nylon castors

**Package :** 2 pcs / 1 carton

**Net weight (KG) :** 13.25

**Gross weight (KG) :** 31.3

**CBM :** 0.293

**Package Size :** 75\*62\*63

**Product Size :** 660\*630\*1010

## M -st-o-49

**Selling price :**

**Material description :**

1. up and down headrest.
2. nylon back frame with imported mesh back, adjust lumbar support with clothes hanger
3. moulded foam fabric seat cushion with PP shell support
4. up and down nylon armrest
5. 3 levels functional mechanism
6. nylon base with nylon castors

**Package :** 2 pcs / 1 carton

**Net weight (KG) :** 14.5

**Gross weight (KG) :** 33.8

**CBM :** 0.293

**Package Size :** 75\*62\*63

**Product Size :** 660\*630\*1220



**Cushion color**



YD124-1



YD124-2



## M -st-o-51

**Selling price :**

**Material description :**

1. up and down headrest, fixed PP armrest
2. white nylon back frame, adjust lumbar support with clothes hanger
3. moulded foam imported fabric seat cushion with PP shell support
4. multifunctional synchronized mechanism with level 3 lock system
5. aluminum base with nylon castors, class 3 gas spring

**Package :** 2 pcs / 1 carton

**Net weight (KG) :** 14.5

**Gross weight (KG) :** 33.8

**CBM :** 0.293

**Package Size :** 75\*62\*63

**Product Size :** 660\*630\*1220



## M -st-o-52

**Selling price :**

**Material description :**

1. fixed PP armrest
2. white nylon back frame, adjust lumbar support with clothes hanger
3. moulded foam imported fabric seat cushion with PP shell support
4. multifunctional synchronized mechanism with level 3 lock system
5. aluminum base with nylon castors, class 3 gas spring

**Package :** 2 pcs / 1 carton

**Net weight (KG) :** 13.25

**Gross weight (KG) :** 31.3

**CBM :** 0.293

**Package Size :** 75\*62\*63

**Product Size :** 660\*630\*1010



## M -st-o-53

**Selling price :**

**Material description :**

1. white nylon back frame with imported mesh back, adjust lumbar support
2. moulded foam fabric seat cushion with PP shell support
3. black armrest with PU surface
4. chrome leg

**Package :** 2 pcs / 1 carton

**Net weight (KG) :** 12.7

**Gross weight (KG) :** 27.8

**CBM :** 0.303

**Package Size :** 73\*68\*61

**Product Size :** 580\*620\*990

**Cushion color**



YD124-1



YD124-2



## M -st-o-54

**Selling price :**

**Material description :**

storage: whole black

1. up and down PP headrest.
2. PP backframe with double mesh back and lumbar support
3. moulded foam Fabric seat cushion with PP shell support
4. Fixed PP armrest
5. tilt and lock mechanism
6. PP base pass 1000kg test with nylon castors

**Package :** 2 pcs / 1 carton

**Net weight (KG) :** 12.5

**Gross weight (KG) :** 27.4

**CBM :** 0.223

**Package Size :** 61\*58\*63

**Product Size :** 650\*560\*1150



## M -st-o-55

**Selling price :**

**Material description :**

storage: whole black

1. PP backframe with double mesh back and lumbar support
2. moulded foam Fabric seat cushion with PP shell support
3. Fixed PP armrest
4. tilt and lock mechanism
5. PP base pass 1000kg test with nylon castors

**Package :** 2 pcs / 1 carton

**Net weight (KG) :** 11.35

**Gross weight (KG) :** 24.7

**CBM :** 0.211

**Package Size :** 61\*55\*63

**Product Size :** 650\*560\*970



## M -st-o-56

**Selling price :**

**Material description :**

storage: whole black

1. PP backframe with double mesh back and lumbar support
2. moulded foam Fabric seat cushion with PP shell support
3. Fixed PP armrest
4. tilt and lock mechanism
5. black leg support presure 110kg

**Package :** 2 pcs / 1 carton

**Net weight (KG) :** 12.4

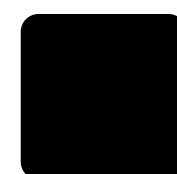
**Gross weight (KG) :** 26.8

**CBM :** 0.211

**Package Size :** 61\*55\*63

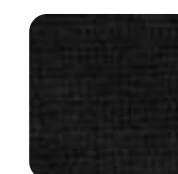
**Product Size :** 650\*560\*1010

**Backrest color**



JF295-1

**Cushion color**



YD124-1



## M -st-o-57

**Selling price :**

**Material description :**

1. up and down PP headrest.
2. white PP backframe with double mesh back and lumbar support
3. moulded foam Fabric seat cushion with PP shell support
4. Fixed PP armrest
5. tilt and lock mechanism
6. aluminum base pass 1136kg test with nylon castors

**Package :** 2 pcs / 1 carton

**Net weight (KG) :** 12.5

**Gross weight (KG) :** 27.4

**CBM :** 0.223

**Package Size :** 61\*58\*63

**Product Size :** 650\*560\*1150



## M -st-o-58

**Selling price :**

**Material description :**

1. white PP backframe with double mesh back and lumbar support
2. moulded foam Fabric seat cushion with PP shell support
3. Fixed PP armrest
4. tilt and lock mechanism
5. aluminum base pass 1136kg test with nylon castors

**Package :** 2 pcs / 1 carton

**Net weight (KG) :** 11.35

**Gross weight (KG) :** 24.7

**CBM :** 0.211

**Package Size :** 61\*55\*63

**Product Size :** 650\*560\*970



## M -st-o-59

**Selling price :**

**Material description :**

1. PP backframe with double mesh back and lumbar support
2. moulded foam Fabric seat cushion with PP shell support
3. Fixed PP armrest
4. tilt and lock mechanism
5. chrome leg support pressure 110kg

**Package :** 2 pcs / 1 carton

**Net weight (KG) :** 12.4

**Gross weight (KG) :** 26.8

**CBM :** 0.211

**Package Size :** 61\*55\*63

**Product Size :** 650\*560\*1010

### Backrest color



295-white

### Cushion color



YD124-12





## M -st-o-60

**Selling price :**

**Material description :**

1. up and down PP headrest.
2. PP backframe with mesh back and lumbar support
3. moulded foam Fabric seat cushion with PP shell support
4. Fixed PP armrest
5. tilt and lock mechanism
6. nylon base pass static pressure test in 1136kg with nylon castors

**Package :** 2 pcs / 1 carton

**Net weight (KG) :** 13.8

**Gross weight (KG) :** 29.6

**CBM :** 0.293

**Package Size :** 75\*62\*63

**Product Size :** 630\*500\*1200



## M -st-o-61

**Selling price :**

**Material description :**

1. PP backframe with mesh back and lumbar support
2. moulded foam Fabric seat cushion with PP shell support
3. Fixed PP armrest
4. tilt and lock mechanism
5. nylon base pass static pressure test in 1136kg with nylon castors

**Package :** 2 pcs / 1 carton

**Net weight (KG) :** 13

**Gross weight (KG) :** 28.5

**CBM :** 0.293

**Package Size :** 75\*62\*63

**Product Size :** 630\*500\*1000



## M -st-o-62

**Selling price :**

**Material description :**

1. PP backframe with mesh back and lumbar support
2. moulded foam Fabric seat cushion with PP shell support
3. black armrest with PU surface
4. chrome leg

**Package :** 2 pcs / 1 carton

**Net weight (KG) :** 12.7

**Gross weight (KG) :** 27.8

**CBM :** 0.303

**Package Size :** 73\*68\*61

**Product Size :** 630\*500\*1000

Cushion color



YD124-1



YD124-2



## M -st-o-63

**Selling price :**

**Material description :**

1. Fixed PP armrests
2. PP shell back frame with mesh
3. moulded foam Fabric seat cushion with PP shell bottom support, tilt and lock mechanism
4. PP feet with PA castors
5. gas spring pass test 100,000 times without broken

**Package :** 2 pcs / 1 carton

**Net weight (KG) :** 11.8

**Gross weight (KG) :** 25.6

**CBM :** 0.211

**Package Size :** 61\*55\*63

**Product Size :** 730\*590\*990



## M -st-o-64

**Selling price :**

**Material description :**

1. Fixed PP armrests
2. PP shell back frame with mesh
3. moulded foam Fabric seat cushion with PP shell bottom support, tilt and lock mechanism
4. black leg

**Package :** 2 pcs / 1 carton

**Net weight (KG) :** 11.35

**Gross weight (KG) :** 24.7

**CBM :** 0.211

**Package Size :** 61\*55\*63

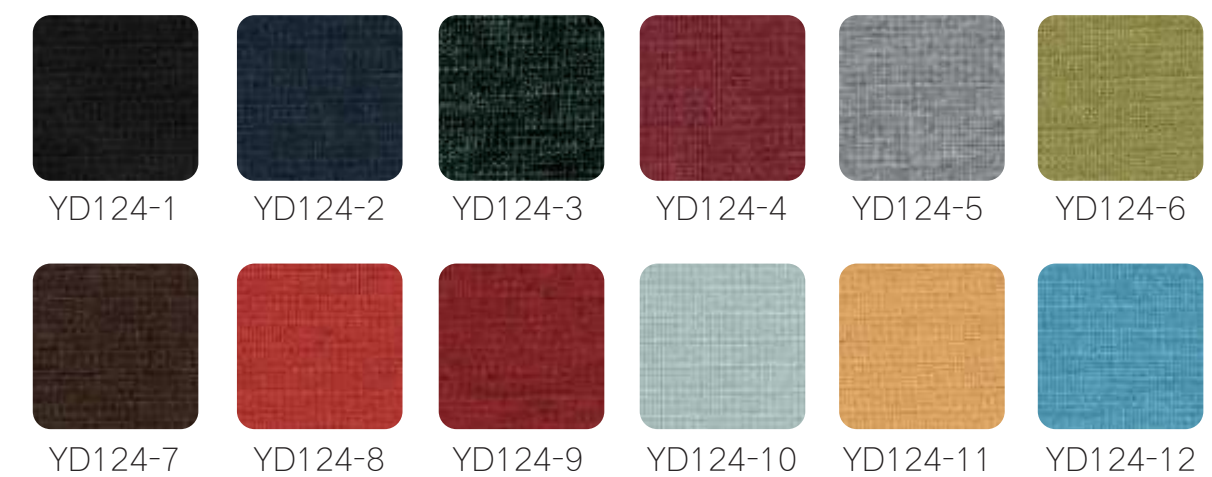
**Product Size :** 650\*590\*1030



### Backrest color



### Cushion color





## M -st-o-65

**Selling price :**

**Material description :**

1. Fixed PP armrests
2. white PP shell back frame with mesh
3. moulded foam Fabric seat cushion with PP shell bottom support, tilt and lock mechanism
4. white PP feet with PA castors, past test in 1000kg
5. gas spring pass test 100,000 times without broken

**Package :** 2 pcs / 1 carton

**Net weight (KG) :** 12.05

**Gross weight (KG) :** 26.1

**CBM :** 0.211

**Package Size :** 61\*55\*63

**Product Size :** 730\*590\*990

## M -st-o-66

**Selling price :**

**Material description :**

1. Fixed PP armrests
2. white PP shell back frame with mesh
3. moulded foam Fabric seat cushion with PP shell bottom support, tilt and lock mechanism
4. chrome leg

**Package :** 2 pcs / 1 carton

**Net weight (KG) :** 11.65

**Gross weight (KG) :** 25.3

**CBM :** 0.211

**Package Size :** 61\*55\*63

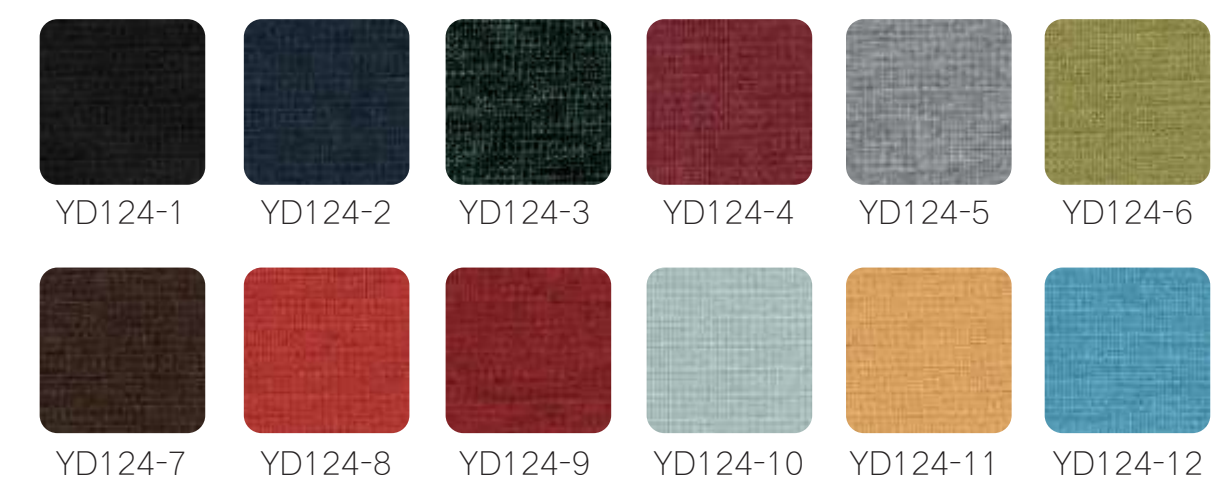
**Product Size :** 650\*590\*1030



### Backrest color



### Cushion color





## M -st-o-9

**Illustrate :** black frame

**Selling price :**

**Material description :**

1. up and down and rotate PP headrest
2. PA backrest, swing left and right with 5°, recline angle in 100°-120°, good quality mesh back
3. mesh seat with PP shell
4. 3 levels functional (with swing) mechanism
5. up and down PA armrest with PU surface
6. class 3 air spring passed SGS test
7. PA base with PA castors, pass 1300kg static pressure

**Package :** 2 pcs / 1 carton

**Net weight (KG) :** 13.56

**Gross weight (KG) :** 29.12

**CBM :** 0.29

**Package Size :** 75\*62\*63

**Product Size :** 670\*635\*1175



## M -st-o-10

**Illustrate :** black frame

**Selling price :**

**Material description :**

1. PA backrest, swing left and right with 5°, recline angle in 100°-120°, good quality mesh back
2. mesh seat with PP shell
3. 3 levels functional (with swing) mechanism
4. up and down PA armrest with PU surface
5. class 3 air spring passed SGS test
6. PA base with PA castors, pass 1300kg static pressure

**Package :** 2 pcs / 1 carton

**Net weight (KG) :** 12.8

**Gross weight (KG) :** 27.6

**CBM :** 0.29

**Package Size :** 75\*62\*63

**Product Size :** 670\*635\*1030



## M -st-o-11

**Illustrate :** grey frame

**Selling price :**

**Material description :**

1. up and down and rotate PP headrest
2. PA backrest, swing left and right with 5°, recline angle in 100°-120°, good quality mesh back
3. mesh seat with PP shell
4. 3 levels functional (with swing) mechanism
5. up and down PA armrest with PU surface
6. class 3 air spring passed SGS test
7. aluminum base with PA castors, pass 1300kg static pressure

**Package :** 2 pcs / 1 carton

**Net weight (KG) :** 13.75

**Gross weight (KG) :** 29.44

**CBM :** 0.29

**Package Size :** 75\*62\*63

**Product Size :** 670\*635\*1175



## M -st-o-12

**Illustrate :** grey frame

**Selling price :**

**Material description :**

1. PA backrest, swing left and right with 5°, recline angle in 100°-120°, good quality mesh back
2. mesh seat with PP shell
3. 3 levels functional (with swing) mechanism
4. up and down PA armrest with PU surface
5. class 3 air spring passed SGS test
6. aluminum base with PA castors, pass 1300kg static pressure

**Package :** 2 pcs / 1 carton

**Net weight (KG) :** 12.94

**Gross weight (KG) :** 27.88

**CBM :** 0.29

**Package Size :** 75\*62\*63

**Product Size :** 670\*635\*1030

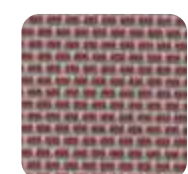
### Backrest color / Cushion color



YM93-40-14



YM93-40-29



YM93-40-20



YM93-45-23



YM93-31A



## M -st-o-80

**Illustrate :** black frame PP leg

**Selling price :**

**Material description :**

- storage: whole black, or grey back black seat
1. PA headrest and PP armrest.
  2. PP backframe with high quality mesh back
  3. cutted foam Fabric seat cushion with PP shell support
  4. tilt and lock mechanism
  5. PP base with nylon castors

**Package :** 2 pcs / 1 carton

**Net weight (KG) :** 12.25

**Gross weight (KG) :** 26.5

**CBM :** 0.253

**Package Size :** 67\*62\*61

**Product Size :** 730\*660\*1150

## M -st-o-81

**Illustrate :** white frame aluminum leg

**Selling price :**

**Material description :**

- storage: whole black, or grey back black seat
1. PA headrest and PP armrest.
  2. PP backframe with high quality mesh back
  3. cutted foam Fabric seat cushion with PP shell support
  4. tilt and lock mechanism
  5. PP base with nylon castors

**Package :** 2 pcs / 1 carton

**Net weight (KG) :** 12.25

**Gross weight (KG) :** 26.5

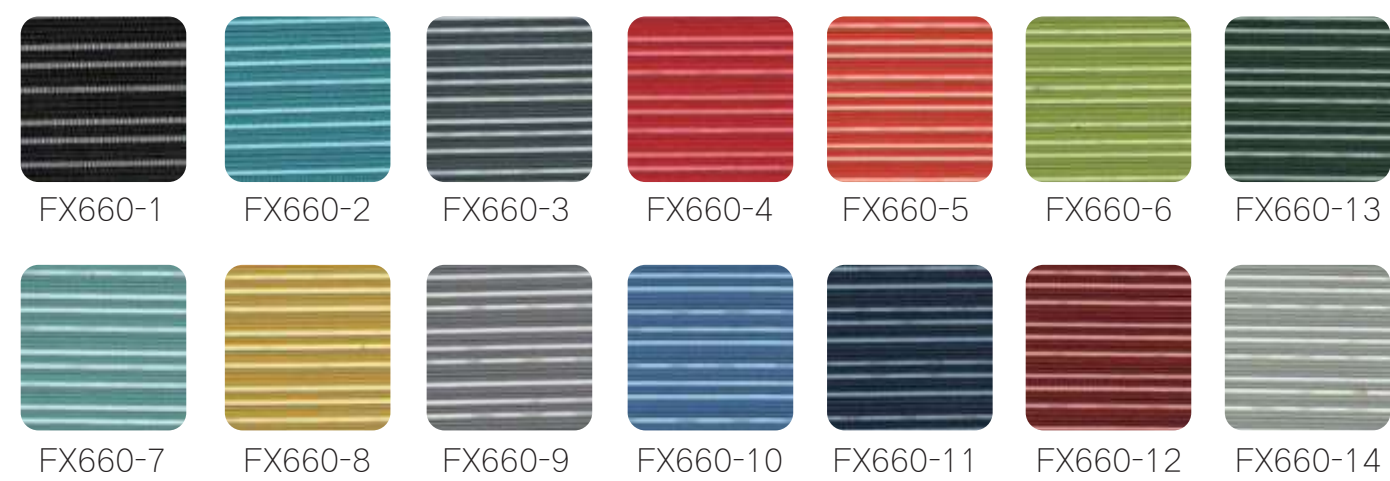
**CBM :** 0.253

**Package Size :** 67\*62\*61

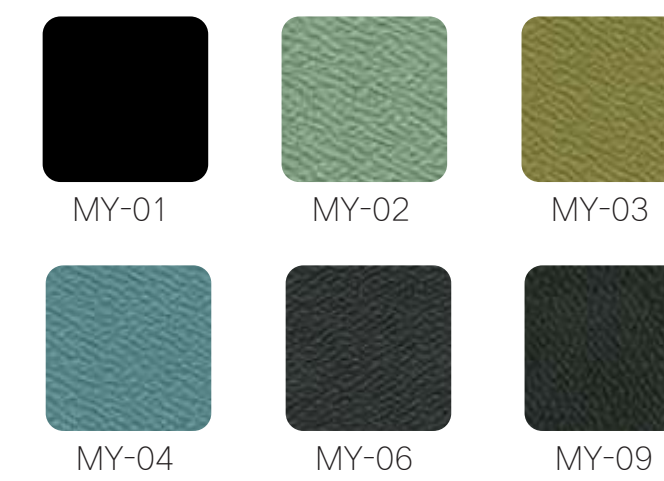
**Product Size :** 730\*660\*1150



### Backrest color



### Cushion color





## M -st-o-82

**Illustrate :** black frame PP leg

**Selling price :**

**Material description :**

storage: whole black, or grey back black seat

1. PP armrest.
2. PP backframe with high quality mesh back
3. cutted foam Fabric seat cushion with PP shell support
4. tilt and lock mechanism
5. PP base with nylon castors

**Package :** 2 pcs / 1 carton

**Net weight (KG) :** 10.8

**Gross weight (KG) :** 23.6

**CBM :** 0.253

**Package Size :** 67\*62\*61

**Product Size :** 730\*620\*1020



## M -st-o-83

**Illustrate :** white frame aluminum leg

**Selling price :**

**Material description :**

storage: whole black, or grey back black seat

1. PP armrest.
2. PP backframe with high quality mesh back
3. cutted foam Fabric seat cushion with PP shell support
4. tilt and lock mechanism
5. PP base with nylon castors

**Package :** 2 pcs / 1 carton

**Net weight (KG) :** 10.8

**Gross weight (KG) :** 23.6

**CBM :** 0.253

**Package Size :** 67\*62\*61

**Product Size :** 730\*620\*1020



## M -st-o-84

**Illustrate :** black frame

**Selling price :**

**Material description :**

storage: whole black, or grey back black seat

1. PP armrest.
2. PP backframe with high quality mesh back
3. cutted foam Fabric seat cushion with PP shell support
4. black leg

**Package :** 2 pcs / 1 carton

**Net weight (KG) :** 10.2

**Gross weight (KG) :** 22.4

**CBM :** 0.253

**Package Size :** 67\*62\*61

**Product Size :** 730\*620\*1020



## M -st-o-85

**Illustrate :** white fram

**Selling price :**

**Material description :**

storage: whole black, or grey back black seat

1. PP armrest.
2. PP backframe with high quality mesh back
3. cutted foam Fabric seat cushion with PP shell support
4. black leg

**Package :** 2 pcs / 1 carton

**Net weight (KG) :** 10.2

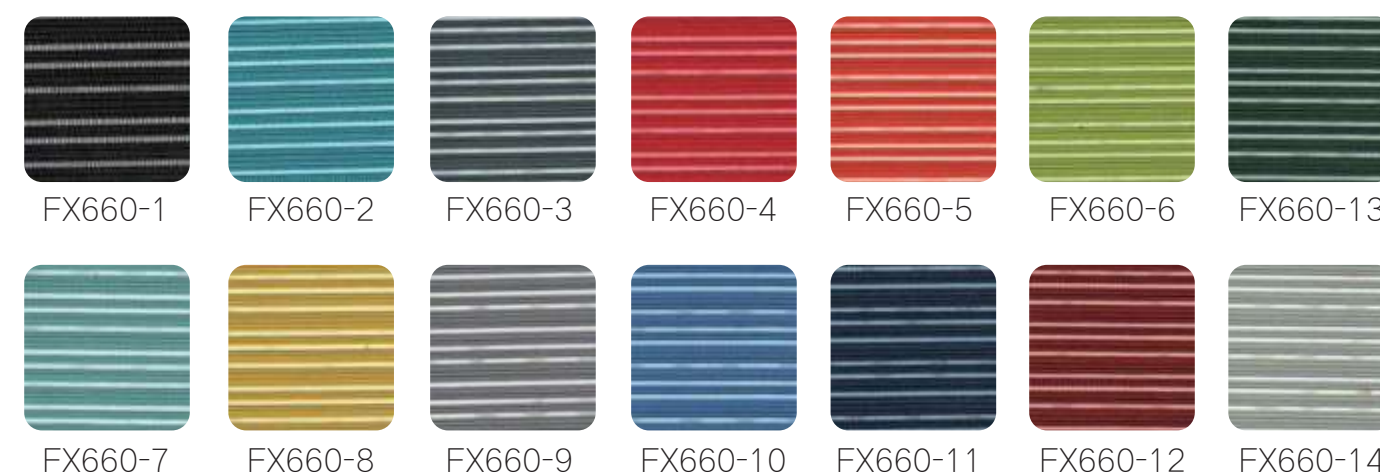
**Gross weight (KG) :** 22.4

**CBM :** 0.253

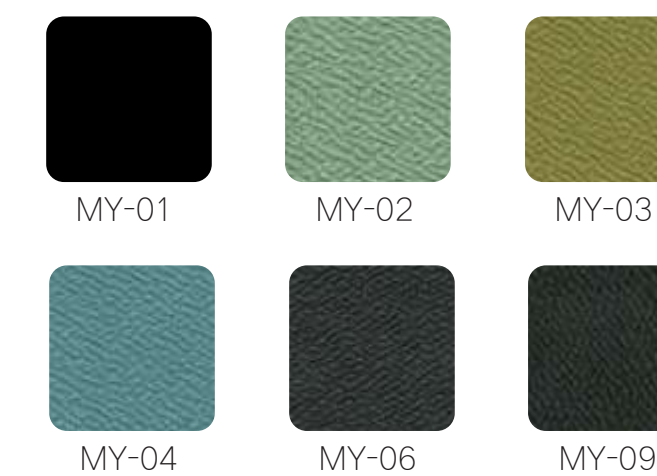
**Package Size :** 67\*62\*61

**Product Size :** 730\*620\*1020

### Backrest color



### Cushion color





## M -st-o-88

**Illustrate :** black frame

**Selling price :**

**Material description :**

storage: whole black

1. PP armrest.
2. PP backframe with high quality mesh back
3. cutted foam Fabric seat cushion with PP shell support
4. tilt and lock mechanism
5. PP base with nylon castors

**Package :** 2 pcs / 1 carton

**Net weight (KG) :** 12.15

**Gross weight (KG) :** 26.3

**CBM :** 0.282

**Package Size :** 76\*58\*64

**Product Size :** 680\*650\*1040



## M -st-o-89

**Illustrate :** white frame

**Selling price :**

**Material description :**

storage: whole black

1. PP armrest.
2. PP backframe with high quality mesh back
3. cutted foam Fabric seat cushion with PP shell support
4. tilt and lock mechanism
5. PP base with nylon castors

**Package :** 2 pcs / 1 carton

**Net weight (KG) :** 12.15

**Gross weight (KG) :** 26.3

**CBM :** 0.282

**Package Size :** 76\*58\*64

**Product Size :** 680\*650\*1040



## M -st-o-90

**Illustrate :** black frame

**Selling price :**

**Material description :**

storage: whole black

1. PP armrest.
2. PP backframe with high quality mesh back
3. cutted foam Fabric seat cushion with PP shell support
4. chrome leg

**Package :** 3 pcs / 1 carton

**Net weight (KG) :** 10.1

**Gross weight (KG) :** 33.3

**CBM :** 0.318

**Package Size :** 73\*68\*64

**Product Size :** 570\*570\*1040

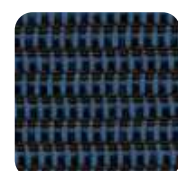
### Backrest color



YM99-21



YM99-20-5



YM99-25-1



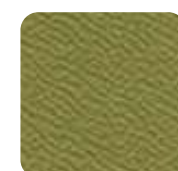
YM99-22-3



MY-01



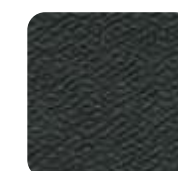
MY-02



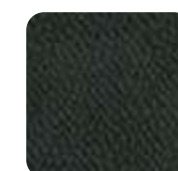
MY-03



MY-04



MY-06



MY-09



## M -st-o-1

**Illustrate :** black frame

**Selling price :**

**Material description :**

1. backrest: PP material with recline angle in 105°-125°, lumbar adjust button can be 8cm up and down
2. good quality nylon mesh back with PP lumbar support, cutted foam with PP shell for seat
3. PP armrest
4. 3 levels functional mechanism
5. class 3 gas lift SGS approved
6. PA base pass static pressure test in 1300kg

**Package :** 2 pcs / 1 carton

**Net weight (KG) :** 12.2

**Gross weight (KG) :** 26.4

**CBM :** 0.225

**Package Size :** 67\*55\*61

**Product Size :** 640\*620\*990



## M -st-o-2

**Illustrate :** black frame

**Selling price :**

**Material description :**

1. backrest: PP material with recline angle in 105°-125°, lumbar adjust button can be 8cm up and down
2. good quality nylon mesh back with PP lumbar support, cutted foam with PP shell for seat
3. PP armrest
4. black feet

**Package :** 2 pcs / 1 carton

**Net weight (KG) :** 11.26

**Gross weight (KG) :** 24.52

**CBM :** 0.22

**Package Size :** 69\*62\*52

**Product Size :** 595\*620\*980



## M -st-o-3

**Illustrate :** grey frame

**Selling price :**

**Material description :**

1. backrest: PP material with recline angle in 105°-125°, lumbar adjust button can be 8cm up and down
2. good quality nylon mesh back with PP lumbar support, cutted foam with PP shell for seat
3. PP armrest
4. 3 levels functional mechanism
5. class 3 gas lift SGS approved
6. grey PP base pass static pressure test in 1300kg

**Package :** 2 pcs / 1 carton

**Net weight (KG) :** 12.2

**Gross weight (KG) :** 26.4

**CBM :** 0.225

**Package Size :** 67\*55\*61

**Product Size :** 640\*620\*990



## M -st-o-4

**Illustrate :** grey frame

**Selling price :**

**Material description :**

1. backrest: PP material with recline angle in 105°-125°, lumbar adjust button can be 8cm up and down
2. good quality nylon mesh back with PP lumbar support, cutted foam with PP shell for seat
3. PP armrest
4. chrome feet

**Package :** 2 pcs / 1 carton

**Net weight (KG) :** 11.26

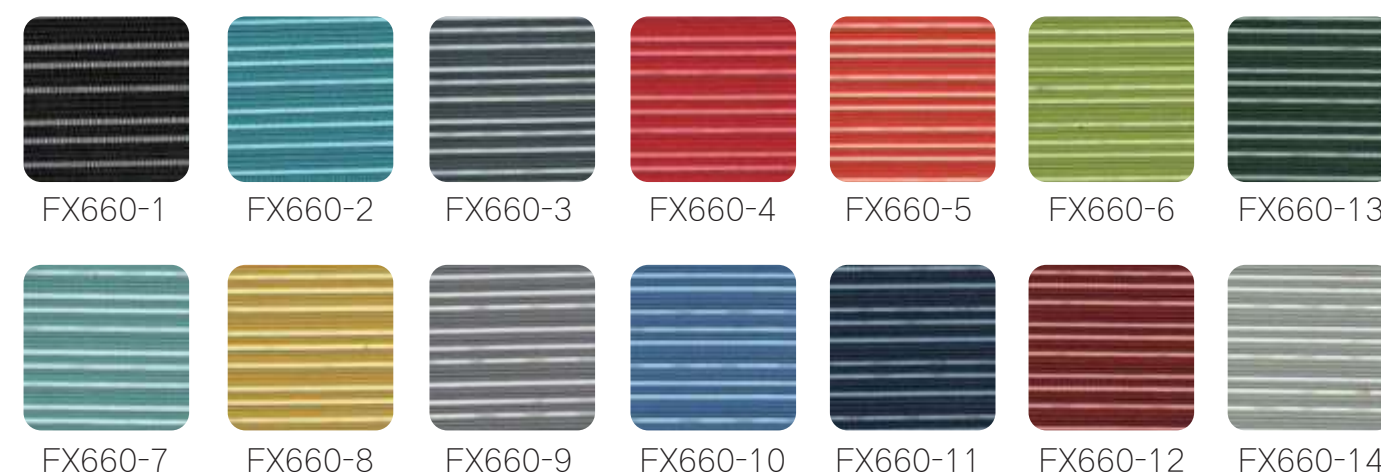
**Gross weight (KG) :** 24.52

**CBM :** 0.22

**Package Size :** 69\*62\*52

**Product Size :** 595\*620\*980

### Backrest color



### Cushion color







## M -st-o-39

**Selling price :**

**Material description :**

storage: whole black

1. Adjustable PP headrest.
2. PP backframe with mesh back
3. cutted foam Fabric seat cushion
4. Fixed PP armrest
5. tilt and lock mechanism
6. PP base with nylon castors

**Package :** 2 pcs / 1 carton

**Net weight (KG) :** 12.6

**Gross weight (KG) :** 27.2

**CBM :** 0.176

**Package Size :** 60\*48\*61

**Product Size :** 610\*540\*1100



## M -st-o-40

**Selling price :**

**Material description :**

storage: whole black

1. PP backframe with mesh back
2. cutted foam Fabric seat cushion
3. Fixed PP armrest
4. tilt and lock mechanism
5. PP base with nylon castors

**Package :** 2 pcs / 1 carton

**Net weight (KG) :** 9.75

**Gross weight (KG) :** 21.5

**CBM :** 0.176

**Package Size :** 60\*48\*61

**Product Size :** 610\*540\*950



## M -st-o-41

**Selling price :**

**Material description :**

storage: whole black

1. PP backframe with double mesh back
2. cutted foam Fabric seat cushion
3. Fixed PP armrest
4. black leg

**Package :** 2 pcs / 1 carton

**Net weight (KG) :** 8.78

**Gross weight (KG) :** 19.35

**CBM :** 0.16

**Package Size :** 64\*43\*58

**Product Size :** 610\*540\*980

**Backrest color**



JF295-1