



# NOVEMBER 2021

## NEWSLETTER

Winter seems to be upon us. Cold and clear this morning.

I would like to inform you all that Cameron Weller has resigned as President of our Society and Sue Taylor is now "Acting President"

I as you know I have taken the role of "Acting Chairman" which along with Sue are offices that will be filled following nominations and by election at the AGM.

Nina Bryant has decided for reasons of health to resign from the committee and relinquished her role as Membership secretary with immediate effect.

Until the election of a new Membership Secretary I will cover the role so please pass on any enquiries to me.

Im sure you will join with me in thanking Sue, Nina and Cameron for their dedication and support to the Arundel Art Society over the many years that they have served.

Can I ask anyone who feels they can contribute to the Society to consider standing for election onto the committee?

Many thanks to all of you who sent in such a wealth of quality paintings, I'm including them all, the letter may be a bit bigger than of late.

Within the letter is a repeat of the arrangements for the Christmas Lunch at Hobbs Farm by invitation of Rupert and Steph Head . Please come along it promises to be a great occasion.

Andrew



*"Covid Memories"*

Collage by Joy Withers

21" x 22"

## **AAS CHRISTMAS PARTY – MONDAY 6 DECEMBER**

### **12-30 for 1-00**

Hopefully you already have this date, Monday 6 December, in your diaries.

It is a long time since we all got together; the last Christmas party was at Arun View and was, of course, two years ago. We are now hoping that as many of us as possible, together with partners, will be able to come to a Christmas lunch party on the 6<sup>th</sup>.

Much thought has gone into the venue and the sort of event which will be most popular. We have finally decided on a buffet Christmas lunch (rather than an evening event) and it is going to be at Hobbs Farmhouse by the kind invitation of Rupert and Steph Head.

The cost will be £10-00 per head to include a buffet lunch, wine, beer and a selection of soft drinks including “Hobbs Farm Apple juice” (if you have a particular Christmas special tipple, please feel free to bring that along)

There will be plenty of seating and everyone can move around and chat.

Could I ask all members to email Rupert and Steph ([rhead.artist@btinternet.com](mailto:rhead.artist@btinternet.com)) or 'phone 02143 582005/07738473584 to let them know by Monday 30 November whether they can come, whether they will be bringing anyone.

It would be appreciated if you could also copy Pauline Lovell in on your acceptance to assist with the catering arrangements. ([paulinelovell1@gmail.com](mailto:paulinelovell1@gmail.com)) tel 01903 885974

**PLEASE NOTE THIS IS A LUNCHTIME EVENT**

**Please make payment by BACS (preferred) ref Name / Lunch or pay cash on arrival**

Raffle profits to be donated to a local charity to be decided



## FESTIVE CARD COMPETITION

Please join in a festive card competition.

Oils , watercolour, Acrylics or whatever you choose,  
one entry per member.

Sue Taylor, our new acting president will choose her favourite  
card at the Christmas Lunch on 6th Dec.

The winners card will be the cover of our Christmas Greeting.

Please bring your entry with you

or

If you are unable to join us on the 6th please send your entry  
to me by Dec 3rd

ndrwwallis@btinternet.com

Photo via <https://www.goodfreephotos.com/>>Good



Wisboro House  
7 Bernard Road  
ARUNDEL  
BN18 9EP

16<sup>th</sup> October 2021  
Arundel Art Society  
Andrew Wallis AAS Chairman  
14 Oakland Court,  
Fitzalan Road,  
Littlehampton  
BN17 5 ID.

Dear Mr Wallis

On behalf of the Arundel District Committee of the NSPCC, I wish to thank you most sincerely for your generous donation of £225.60. The Arundel Festival is a wonderful event in the calendar for everyone to enjoy and your thoughtful contribution to the NSPCC has been graciously accepted with thanks. I have included a receipt to reflect this.

Your support is greatly appreciated and will enable the NSPCC to support many children and their families locally.

Yours sincerely,

  
EN Wadlow  
Treasurer  
Arundel District  
NSPCC

*A privilege to share with you the letter of  
thanks from our local branch of the  
NSPPC*

*Many thanks to all who donated raffie  
prizes. Next year we will attempt to dou-  
ble it!!*



Patron: Her Majesty The Queen  
Founded in 1864, incorporated by Royal Charter (RC000374).  
ChildLine is a service provided by the National Society for the Prevention of Cruelty to Children (NSPCC).  
Registered charity numbers 254611 and 3095773.



## **FORTHCOMING EVENTS**

Caroline Elvy is busy putting together a programme of activities for 2021.

An Heroic task to say the least.

If anyone has a subject that they would like to see covered please let Caroline know, Caroline will do her best to arrange something.

To those attending the Stephen Foster workshop on the 20<sup>th</sup> November ... Stephen says he is happy for people to use oil paint but most important to note **HE IS EXTREMELY ALLERGIC TO ALL VOLATILE SOLVENTS. Therefore do not bring Turpentine and any substitutes including low-odour varieties eg SANS ODOUR, ZEST IT , BOB ROSS etc, ALKYD paints, LIQUIN OR OTHER PAINTING MEDIUMS EXCEPT LINSEED OIL.**

If anyone would like more information about equipment and materials for the workshop please contact Caroline Elvy.

**A reminder Chris Forsey will be demonstrating on Thursday afternoon 18th Nov , St Marys Hall Clymping Starting at 2-00pm sharp so please arrive no later than 1-50pm**

=====

### **AGM and New Year Wine and Cheese Social**

Rather than just have the AGM we think it would be nice to kick the new year off by combining it with a social event. A glass of wine and light refreshments together with a "Best Painting" competition. Bring along and display one of your recent masterpieces. Voting will be by majority. The winner to be announced at the Social gathering following the business session.

The AGM will be held as usual in Church Hall Clymping , during February the precise date to be announced

Nominations for new committee members are essential for the smooth and continued running of the society.

Further information to follow in due course





*SUMMER NIGHTS Acrylic by Sue Olford*

Dates for Chichester Art Trail for 2022 announced. Saturday 30<sup>th</sup> April, Sunday/Monday 1<sup>st</sup>/2<sup>nd</sup> May (that is Bank Holiday weekend), then the following weekend Sat/Sun 7<sup>th</sup>/8<sup>th</sup> May. I will be registering and the deadline for this is 30<sup>th</sup> November 2021. Your 'Favourite Lighting Man', Christian Wallis will be showing in his workshop at Eartham. Fiona and Rupert exhibited this year, I'm hoping they will be joining again for 2022 as my nearest neighbours Venue wise – that's Flansham to Bilsham. As for the painting shown here entitled *Summer Nights* (Acrylic) – it sold very quickly when it went on display. The painting itself was 12" square on board but came up to 18" square with a large mount and frame. Ever since, I have been trying to paint two more with the same colours and style. I have the boards, mounts and frame but have so far failed to successfully repeat.

Sue Olford

---



*"Happy holiday  
Memories"  
Polzeath, Cornwall  
Oil On Canvas  
by Claire Gray*





*"Meet Jess"*

*Graphite drawing. I have been working on Jess at our Thursday afternoons sessions. I must say that the afternoon light and the constant cups of tea made by the fabulous Sue has made all the difference. Its so nice to drive there and back in day-light..AND I have been staying till the end !! Unfortunately I still cant resist raiding the biscuit tin.*

*Desiree Hart*

*"Tiger cub" -*

*Ink on Silk.*

*A few more whiskers and he will be done. Next year is the Year of the Tiger in the Chinese Calendar so I expect I will be painting lots of Tigers. GREAT!*

*By Desiree Hart*



*I have been watching this rare white starling for some time now. He is with a flock that gather along the Ferring Rife. He stands out so much that I'm surprised he hasn't been predated already. If you look at the photo you can hardly see the other birds as they are so well camouflaged.*

*Photograph by*

*Desiree Hart*





*"The Field"*

*This is a mixture of acrylic and wax crayon. An interesting medium*

*By Nichola Willoughby*

*"Royal Pavilion Brighton"*

*Mixed media*

*By Jacob Taghioff*

*I wanted to try my hand at a mix of buildings and landscape.*



*"Clymping Beach in Autumn Sunset"*

*Acrylic on board by*

*Pauline Lovell*





*"Thames Barges"*

*Acrylic painting of Thames Barges, c. 1910; these cumbersome slow barges were built like wooden built battleships and affectionally known as "Old Gaffers"*

*By Rupert Head*

*Right*

*"Flower border". Acrylic. 40 x 50cm*

*By Joy Withers*



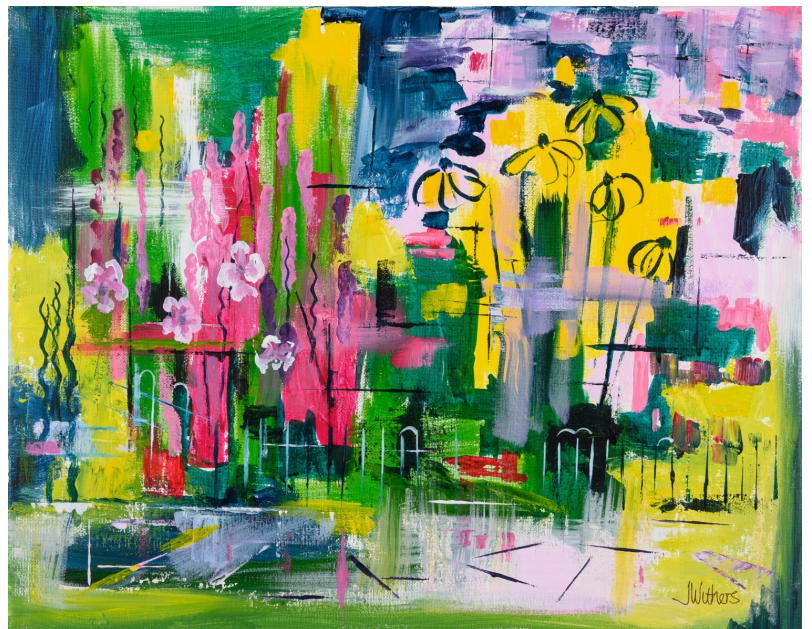
*Left "Sculpture in the Garden, Borde Hill". Acrylic. 50 x 70cm " by Joy Withers*



*Right*

*"Beside the pond at Highdown Gardens". Painted plein air in acrylics. 40 x 50cm*

*By Joy Withers*







*"My New Bike"*

*12" x 12" Acrylic on Canvas*

*Painted earlier this year towards the end of lockdown.  
Its my Grandon Keioko 18 months at the time*

*Id been missing the weekly painting visits.*

*This helped a lot!*

*Lisa Shearing*

*The Plunge*

*16" x 20" Acrylic on canvas*

*Almost finished, my second love to painting is  
swimming/dipping*

*Always loved the sea but usually swam alone  
during the Summer. This year I have joined  
"Bluetits" (excuse the pun!)*

*The intention is to carry on during the Winter.  
Swimming at sunrise in November is some-  
thing I never imagined. I cant believe how  
much fun it is, all you can hear is squeals of  
laughter as we dip into the cold sea, so many  
happy faces!*



*This is my interpretation of the RAF eagle  
which I am putting into the Christmas raffle  
at my Ex RAF National Service Group. The  
original design was by a tailor at Gieves Ltd.  
of Savile Row in 1918. Over the years air-  
men have debated as to whether it is an Al-  
batross or an Eagle - The College of Arms  
described it as an Eagle when it was regis-  
tered in 1923.*

*Pastel painting by Roger Pizzey.*



*"Boat on the Dunes"*

*Painted from a picture I took in the Western Cape*

*By Laurie Hearn*



*Left and Above*

*"Winter Scenes"*

*from my imagination,*

*watercolours by*

*by Laurie Hearn*

*"My Friend Jo"*

*Oil on Canvas*

*From The Goodwood Revival*

*By Tina Gard*

