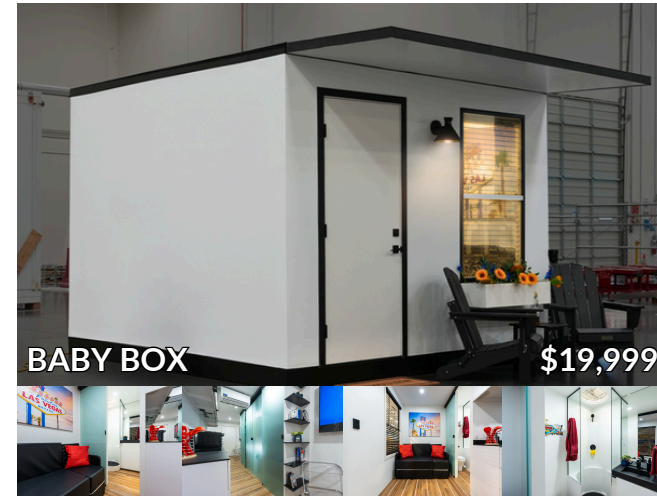


SALISH TRIBAL ALLIANCE GROUP
702.706.1995
INFO@SALISHTRIBALALLIANCEGROUP.COM

BOXABL
 welcome home

 **Salish Tribal Alliance**



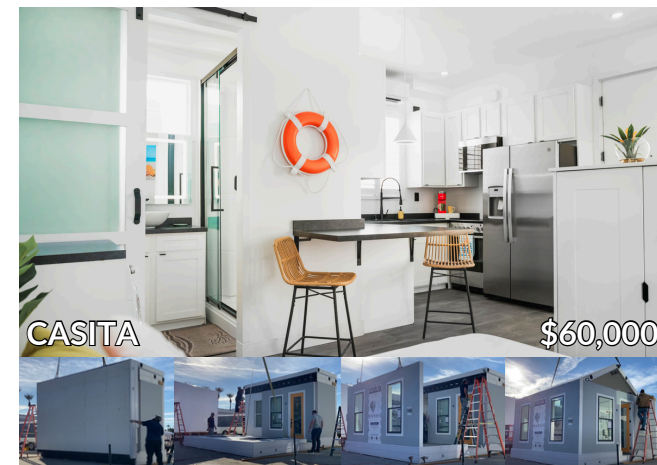
A SHARED MISSION

In a groundbreaking collaboration, Salish Tribal Alliance Group, a Native American-owned consulting firm, and Boxabl, a cutting-edge modular home builder, are uniting their expertise to tackle one of the most pressing challenges of our time—housing affordability and accessibility.

TOUR THE BOXABL FACTORY



5435 E N Belt Rd. North
 Las Vegas, 89115
 702 500-9000



THE CASITA UNFOLDS IN ONE HOUR



WELCOME HOME

INVEST IN BOXABL
WWW.BOXABL.COM/INVEST
 PLEASE READ OFFERING CIRCULAR

THE FUTURE OF HOUSING



1-3 BD / BA

PHASE 2

\$130/SQ FT

THE EVOLUTION OF BOXABL



PHASE 1

Low Rise ADU Units

- Casita | 361 sq ft | Studio home
- PMRV | 361 sq ft | Casita on a chasis

PHASE 2

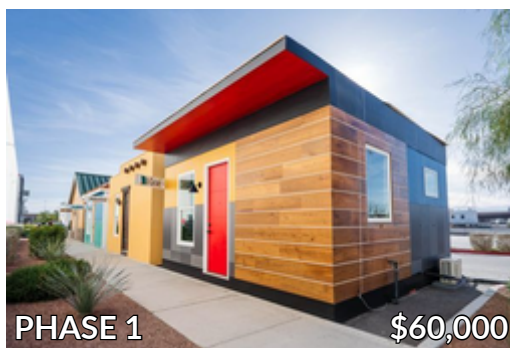
Low & Mid Rise Units

- Baby Box
- One | Two | Three bedroom
- 400 - 2000 sq ft
- Single-story | Townhouse configurations
- Designed for developers | Developments
- Minimum order: 25 units

DEVELOPERS

BOXABL is now accepting orders of 50+ units from developers for our Phase 2 product line which includes bigger Casitas, Town Homes and Single Family Homes (1-3 BD/BA).

361 SQ FT



PHASE 1

\$60,000

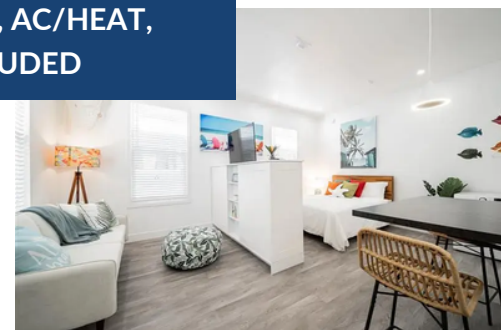
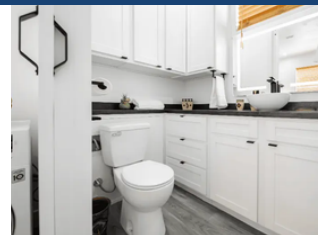


PHASE 2

\$130/SQ FT

Reserve your spot in the production line with an order and deposit.

APPLIANCES, ELECTRICAL, PLUMBING, AC/HEAT, HOT WATER TANK ARE ALL INCLUDED



All homes are painted and delivered white. Customizations are not made by BOXABL.

THE FUTURE OF HOUSING

INVEST IN BOXABL
WWW.BOXABL.COM/INVEST
 PLEASE READ OFFERING CIRCULAR

WELCOME HOME