



UsedGloveBox.com
SCIENTIFIC MARKET SOLUTIONS

Item 26-328 Used *MBraun*™ *Labstar Pro* 2 port Glovebox

This used *MBraun* glovebox includes large & mini antechamber, Labstar pro purifier made in 2020 with touch screen controls, O₂ & H₂O sensor and foot switch. A vacuum pump and gloves are required but not included. 90 Day Warranty for Parts.

Price: **Make offer**





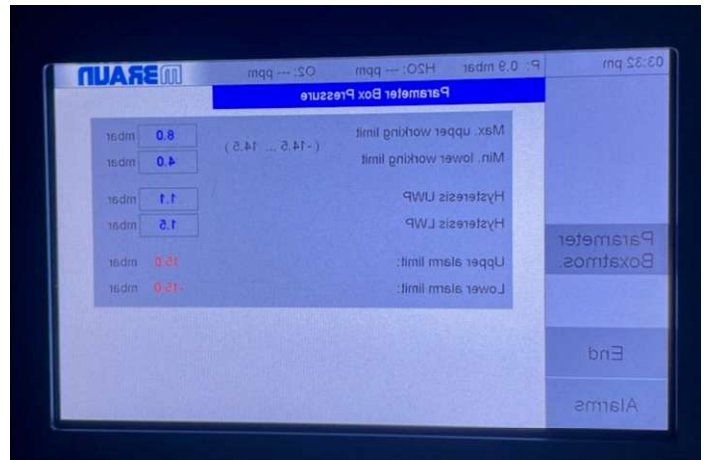
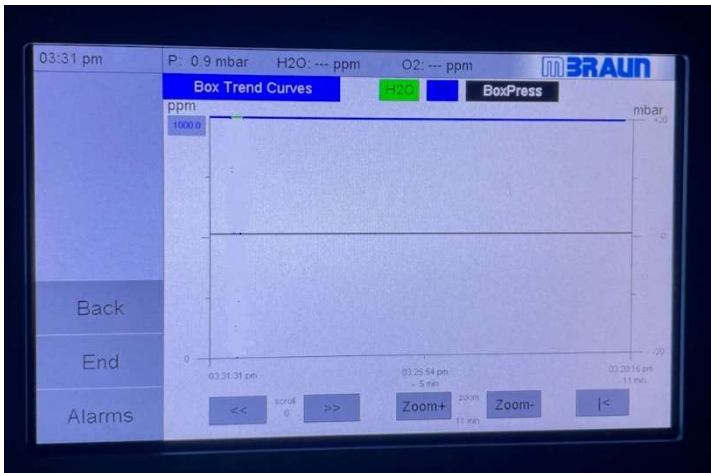
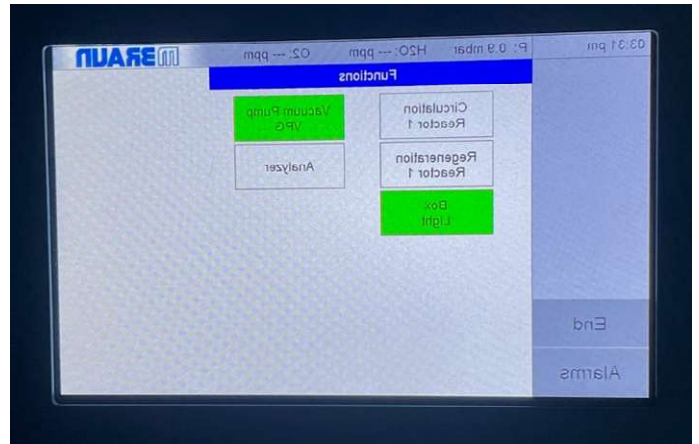
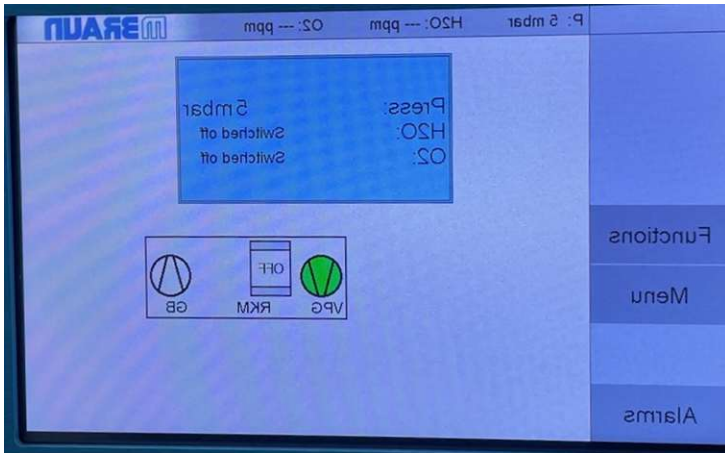
UsedGloveBox.com
SCIENTIFIC MARKET SOLUTIONS



Web: www.usedglovebox.com

Email: info@usedglovebox.com

Tel: 702-343-0297





UsedGloveBox.com
SCIENTIFIC MARKET SOLUTIONS



Web: www.usedglovebox.com

Email: info@usedglovebox.com

Tel: 702-343-0297



UsedGloveBox.com
SCIENTIFIC MARKET SOLUTIONS





UsedGloveBox.com
SCIENTIFIC MARKET SOLUTIONS



Web: www.usedglovebox.com

Email: info@usedglovebox.com

Tel: 702-343-0297



UsedGloveBox.com
SCIENTIFIC MARKET SOLUTIONS





UsedGloveBox.com
SCIENTIFIC MARKET SOLUTIONS





UsedGloveBox.com
SCIENTIFIC MARKET SOLUTIONS

M BRAUN

Labstar^{pro}

Project Number -	20-244
Project - Wiring Diagram No.	A_MB10_ECO_170124
Electrical Supply System	115VAC / 60Hz / L/N/PE
Total Load (FLA)	10.0A
Largest Motor Load	8.6A
Short Circuit Current Rating (SCCR)(NEC) 408/UL508A	5kA
Max. Branch Circuit Protection Fuse (field provided)	15A Min. 250VAC
Date of Manufacturing	Dec. 2020
Enclosure Type Rating	IP 30 UL Type 1

c UL US LISTED

ENCLOSED INDUSTRIAL CONTROL PANEL
No. C 22425388



UsedGloveBox.com

We Buy, Sell & Service Used Gloveboxes

702-343-0297 info@usedglovebox.com



UsedGloveBox.com
SCIENTIFIC MARKET SOLUTIONS

BRAUN

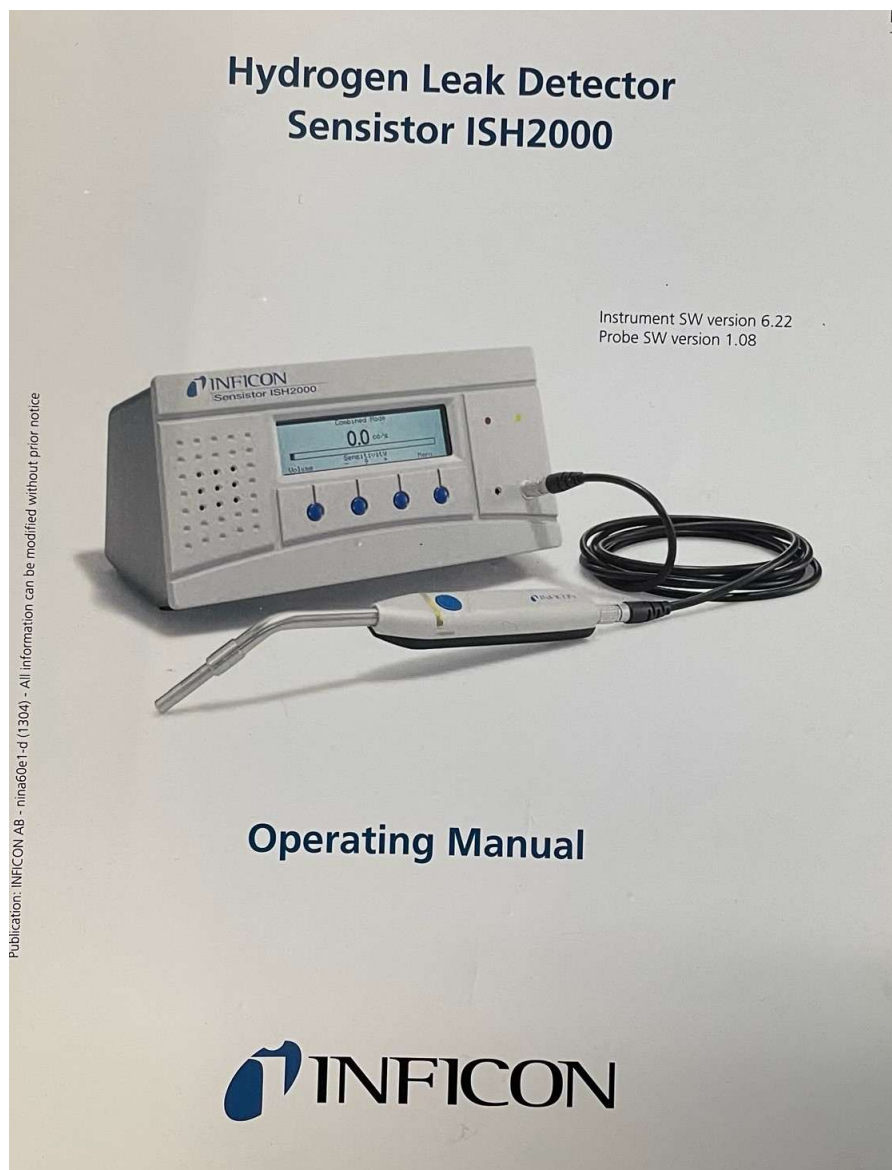
Labstar

Serial No.:	11-105
Project / Service No.:	PR 11-105
Electrical Connections	115V 15A
Manufactured:	05/2011
Glove Box	
Box Pressure, Max:	+ 20 mbar
Box Pressure, Min:	- 20 mbar
Integral Leak Rate:	<0.05 vol % / h
Antechamber	
Total Vacuum:	10-3 mbar
Integral Leak Rate:	<10-5 mbar l / sec
Gas Purification System	
Processing Gas:	N2 / Ar / He
Gas Purification, Max:	< 1ppm H2O / O2
Integral Leak Rate:	< 10-6 mbar l / s
Perm. Ambient Temperature:	15 C - 30 C
Blower Type:	Encapsulated Blower
Blower Flow Rate, Max:	20 m3 / h

Made in USA



Glovebox leak check conducted with an *Inficon* H2 leak detector using 5% H2 95% N2 gas



Optional On-Site Installation, Start Up Assistance and Training -We provide the option of on-site installation assistance. Our personnel have combined inert glovebox work experience of over 40 years. We can train your staff on the operation of the glovebox system. We also will provide long term technical support by email and phone at no charge.