

---

## Item 25-326 Used MBraun™ PURGE 4 port Double Sided Glovebox

This used MBraun PURGE glovebox is ideal for processes using sulfur, chlorine or halides compounds not compatible with the CU catalyst used in recirculating systems. The glovebox includes large & mini antechamber, touch screen controls, H<sub>2</sub>O sensor and foot switch. The system maintains an inert atmosphere via a constant purge flow. The flow rate is controlled via a manual flow valve. H<sub>2</sub>O removal can be further enhanced with the included internal VAC Genesis purifier. A vacuum pump and gloves are required but not included. 90 Day Warranty for Parts.

Price: **Make offer**



The system is equipped with a PLC operated pressure control system which starts automatically when the system is activated. Upper and lower working pressure parameters are set by the user, provide a comfortable range for the user to work in. Depending upon the application, the system can be operated in the positive or negative pressure state. Operational purge Inlet flow is controlled via the flow meter at a rate between 0-200 liters/min. The user can adjust the inlet flow as required. This purge mode has pressure control. If the pressure is above or below the upper or lower limits, purge will shutdown to regulate box pressure to back within limits. Foot pedals can also be used which will shut down the purge operation when gas or vacuum is called for.







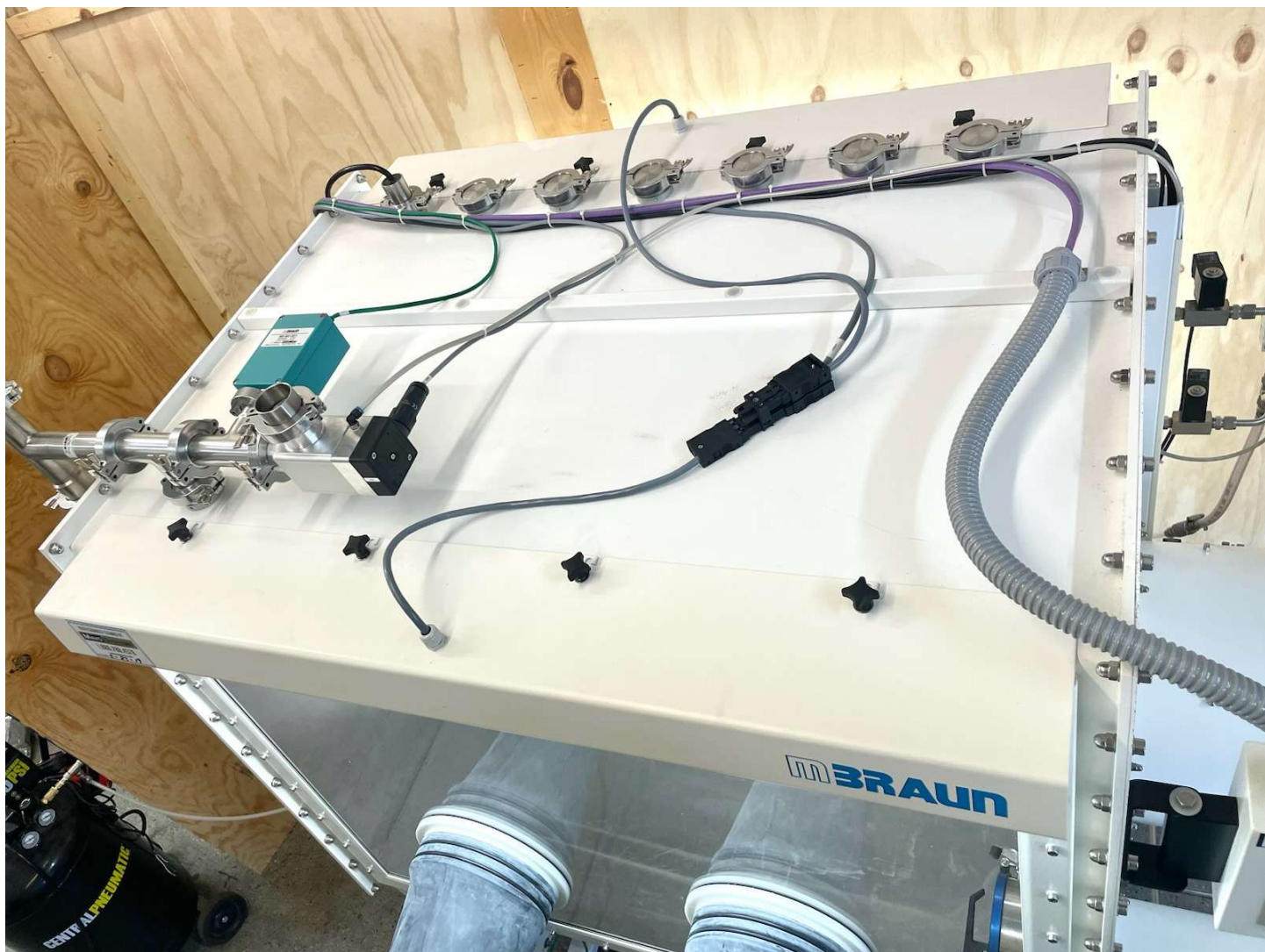




Manual purge flow control valve with indicator and automated flow shut off valves









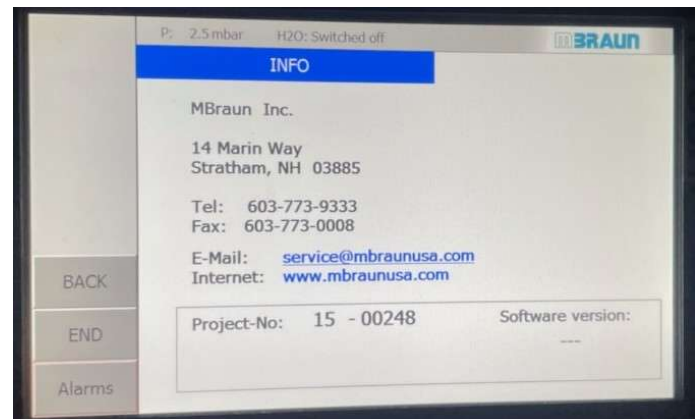
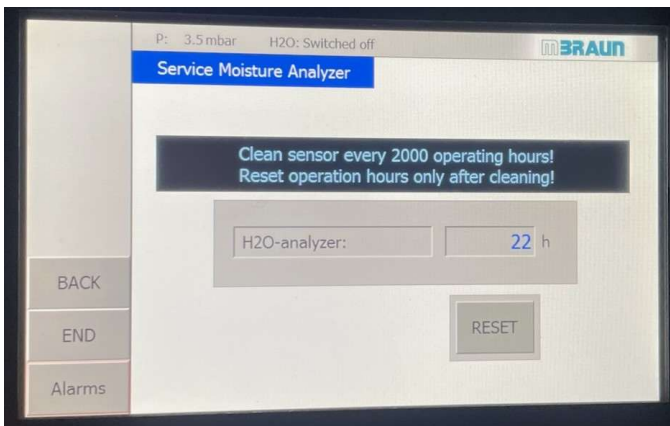
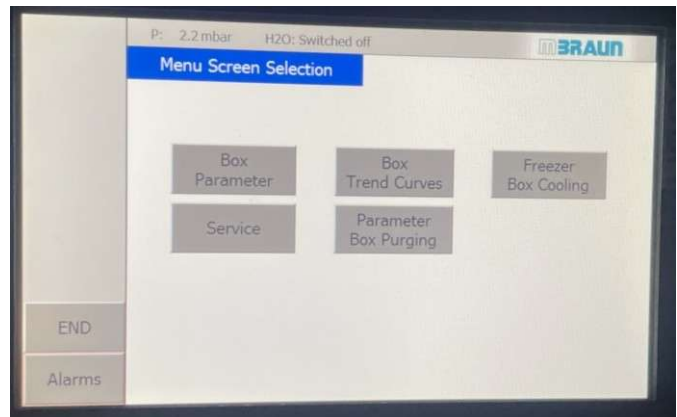
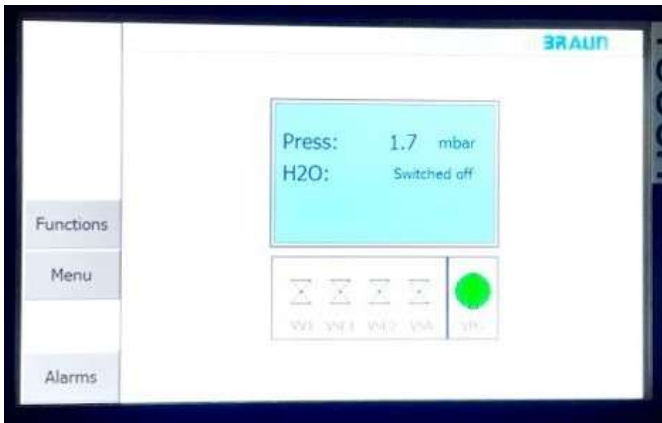




Top mounted purge exhaust plumbing with pneumatic shut off valve and H2O sensor



H2O sensor



Screen shots of purge touch screen controller



VAC Genesis Purifier with Included pre-regenerated moisture cartridges



VAC Genesis Purifier blower will sit inside on glovebox floor and enhance H<sub>2</sub>O removal. This can help reduce gas usage and lower the required purge flow rate, especially when H<sub>2</sub>O is the main concern. Replacement cartridges are available from VAC.





**Custom**

Project No.:	15-219
Overpressure Set To:	12.5 mbar
Electrical Connections:	115V 15A
Manufactured:	December 2015

Made in USA






UsedGloveBox.com

We Buy, Sell & Service Used Gloveboxes

702-343-0297 info@usedglovebox.com

## Main Switch



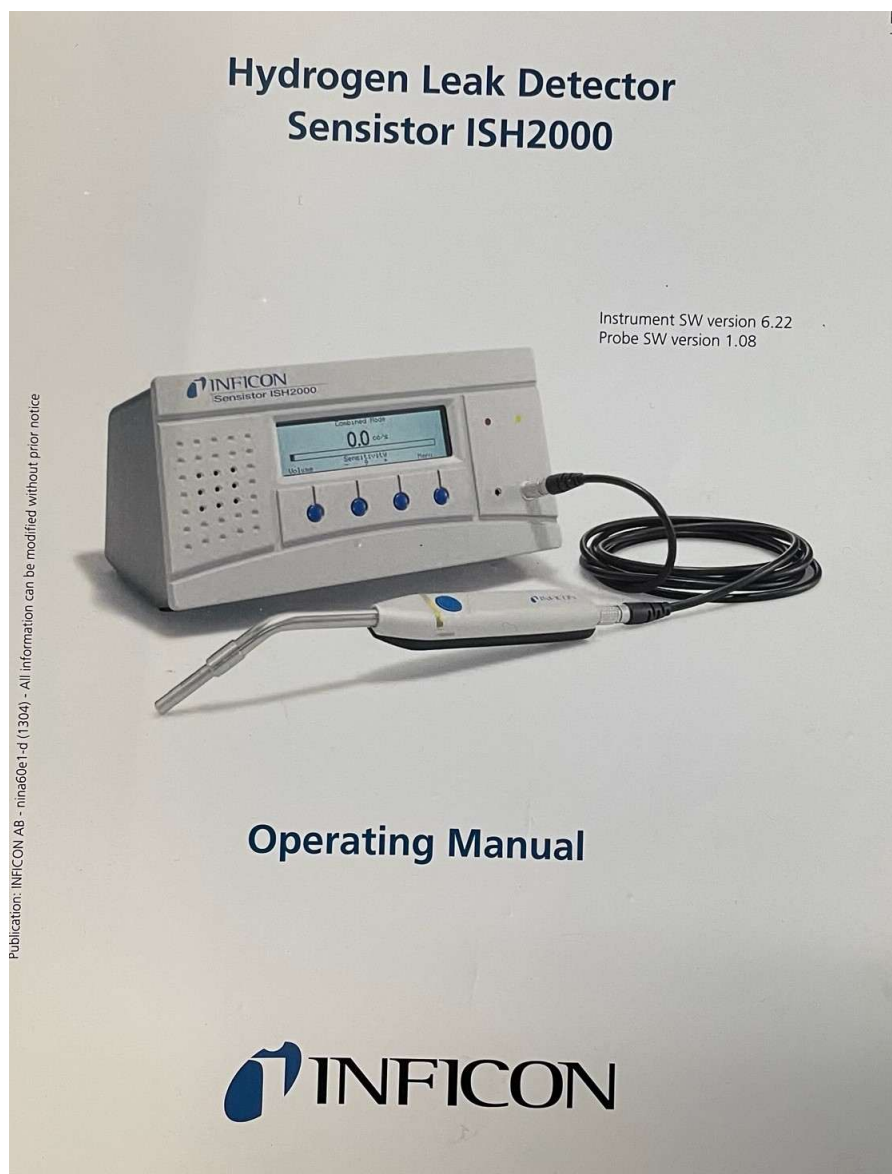


**Purge Box**

Project Number -	15-219
Project - Wiring Diagram No.	15-219_151110
Electrical Supply System:	115VAC/60Hz/L/N/PE
Total Load (FLA)	8.0A
Short Circuit Current Rating (SCCR)(NEC) 409/UL508A	5kA
Max. Branch Circuit Protection Fuse (field provided)	15.0A Min. 250VAC
Date of Manufacturing	Dec. 2015
Enclosure Type Rating	IP 54 UL Type 5



Glovebox leak check conducted with an *Inficon* H2 leak detector using 5% H2 95% N2 gas



**On-Site Installation, Start Up Assistance and Training** -We provide the option of on-site installation assistance. Our personnel have combined inert glovebox work experience of over 40 years. We can train your staff on the operation of the glovebox system. We also will provide long term technical support by email and phone at no charge.