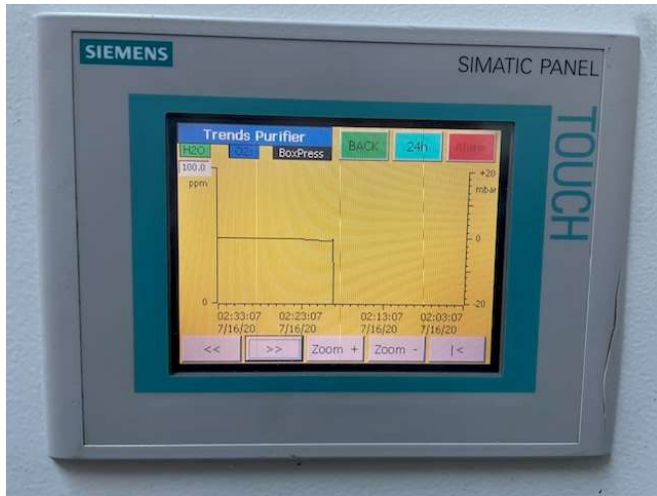

Item 24-302 Used MBraun™ Unilab Pro SP – 2Port Glovebox with MB 20G - LMF Purifier

Price: **Make offer**

This used MBraun Unilab Pro SP glovebox includes large & mini antechamber, gas purifier with touch screen controls and solvent trap, large antechamber, O2 & H2O analyzers and foot switch. Shelves and filters will be added during refurbishment. The fluorescent light was missing and will be replaced. Vacuum pump and gloves are required but not included. System to be in full operational condition. 90 Day Warranty for Parts.







SIEMENS SIMATIC PANEL TOUCH

Parameter Purifier

Operating Hours

Vacuum pump VPG:	31192 h
Blower GB1:	18141 h
Compressor box cooling:	264 h
Compressor freezer:	0 h
Vacuum pump VP1:	0 h
Vacuum pump VP2:	0 h
Vacuum pump VPGL:	0 h

BACK Alarm END













Used AMI Oxygen Analyzer integrated with the MBraun system. Sensitivity rating of 1 ppm. Includes sample pump with sample line and return line. The instrument is used calibrated, nothing additional required for calibration. A new KOH fuel cell sensor and operation manual will be provided.



Used Shaw Superdew 3 Dewpoint Hygrometer operates independently from the glovebox controls read to equivalent of 1 ppm H₂O. Includes aluminum oxide probe sensor that reads directly from box atmosphere. Probe calibration is not guaranteed.



Unilab^{Pro} SP

Project No:	19-005
Glove Box	
Box Pressure, max:	+15 mbar
Box Pressure, min:	-15 mbar
Antechamber	
Total Vacuum:	10 ⁻³ mbar
Integral Leak Rate:	10 ⁻⁵ mbar l/sec
Gas Purification System	
Working Gas:	N ₂ / Ar / He
Attainable Purity Level:	< 1 ppm H ₂ O / O ₂
Integral Leak Rate:	10 ⁻⁵ mbar l/sec
Perm. Ambient Temperature:	15°C - 30°C
Electrical Connections:	115V 50/60Hz, 14.5A Max
Branch Circuit Protection Fuse:	20A CC
Current Consumption:	12.0A
IP Rating:	IP54
Manufactured:	February 2019

M.Braun Inc.
14 Main Way
Syracuse NY, 13205



6469170
Laboratory Equipment

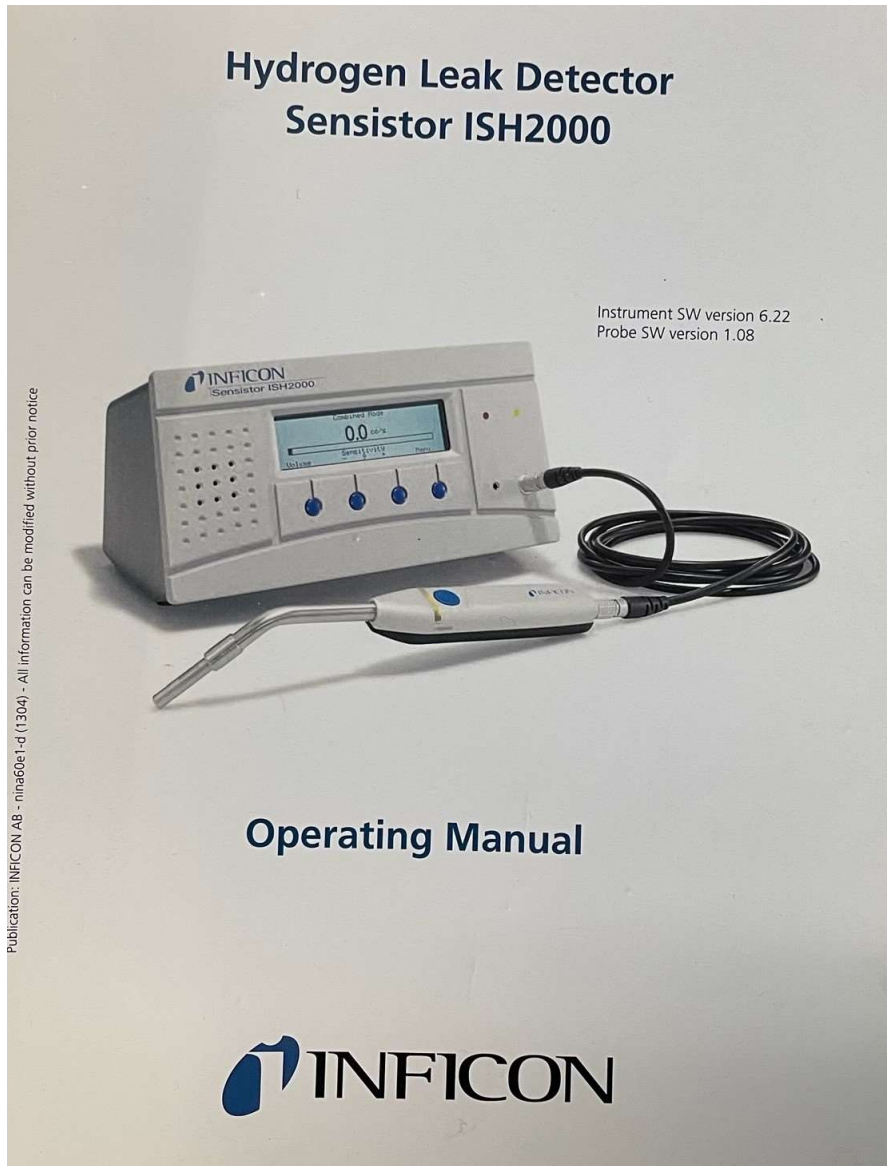


UsedGloveBox.com

We Buy, Sell & Service Used Gloveboxes

702-343-0297 info@usedglovebox.com

Glovebox leak check conducted with an *Inficon* H2 leak detector using a 5% H2 95% N2 gas



On-Site Installation, Start Up Assistance and Training -We provide the option of on-site installation assistance. Our personnel have combined inert glovebox work experience of over 40 years. We can train your staff on the operation of the glovebox system. We also will provide long term technical support by email and phone at no charge.